



West Kaua‘i Regional Plan Update

BENEFICIARY CONSULTATION MEETING #1

Tuesday, May 12, 2026

6:00 to 8:00 p.m.

Waimea Theatre

Meeting Summary

Attendance: 46 signed-in

Sign-in	Total #
Applicant	17
Lessee	12
Both	4
Potential Successor	7
Other	6
TOTAL	46

DHHL: Lillie Makaila (Acting Planning Manager)
Kialoa Mossman (Planner and Project Manager)
Lauren Esaki-Kua (Planner)
Malachi Krishok (Bowers + Kubota, Consultant Project Manager)
Jared Chang (Bowers + Kubota, Consultant)
Ty Shiramizu (Bowers + Kubota, Consultant)

Handouts:

- Meeting Agenda
- Community Values Worksheet

The handouts are appended in Attachment 1.

Presentation:

Lillie Makaila opened the meeting with a welcome and introductions of the DHHL staff and consultants. Tia Koerte provided ‘ōlelo Ni‘ihau interpretation for the meeting. After introductions, Lillie shared a presentation. Lillie explained the purpose of the meeting was to initiate the Regional Plan Update with DHHL’s West Kaua‘i beneficiaries and gather input to inform community values, a vision statement, and identify priority projects. Lillie provided a brief overview of the DHHL planning framework, including the roles of the General Plan, Island Plans, and Regional Plans, and how these documents guide land use and community-based planning across homestead areas. She also

described the West Kauaʻi regional planning area, which includes lands in Hanapēpē, Kekaha, and Puʻu ʻŌpae. Lillie noted that the last West Kauaʻi Regional Plan was completed in 2011 and the updated planning process will place greater emphasis on community-defined values and vision statements to better inform decision-making by the Hawaiian Homes Commission and reflect beneficiary priorities over time. Lastly, she shared a brief overview of the priority projects included in the 2011 Regional Plan. At the end of this presentation DHHL staff took questions, which are summarized under the “General Discussion” section below. The presentation slides are included as Attachment 2.

Following this portion of the meeting, three (3) breakout groups were formed to discuss community values before reconvening for a brief report back and closing facilitated by Lillie. Notes from the breakout groups and report back are summarized under the “Community Values Discussion” section below.

General Discussion:

- Who decides the priority projects?
 - The community selects the priority projects
 - During the beneficiary consultation meetings the project ideas are identified and the group will decide on a list for the community to vote on
 - Parameters of who can vote is up to the beneficiaries and decided in the meetings – some homesteads say anyone who lives in the a homestead community, some say lessees only, some are open to applicants on the waitlist
 - DHHL usually collects votes four ways
 - Online google form
 - Hard copies handed in or mailed to district office
 - Via telephone
 - Via email
- What is the status of the Puʻu ʻŌpae project?
 - Current focus has been on Act 279 projects tied to the \$600 million allocated by State Legislature in 2022-23, which are primarily residential homestead development – Puʻu ʻŌpae is not included in that funding allocation
 - Act 279 funds are now expended so DHHL is now moving on to additional priorities
 - DHHL Island plans identify the land use plans and priority homesteading areas – Puʻu ʻŌpae is still in the Kauaʻi Island plan
 - Regional Plans are more focused on people vs. land use but prioritizing certain development can be incorporated into regional plans
 - Ex. from Waimānalo Regional Plan – beneficiaries felt that DHHL focus on residential homesteading over agricultural was changing character of community so one of their regional priority projects was for DHHL to develop subsistence agriculture lots

- Beneficiaries previously planned and secured funding for agricultural lots on Pu‘u ‘Ōpae but DHHL made their own plan for subdivisions and shutdown the community’s plan – want to make clear who is helping who
 - DHHL staff understand the frustrations of how priorities shift back and forth with changing administrations
- Is it possible to re-prioritize development of Pu‘u ‘Ōpae as part of this process?
 - Absolutely – if that’s what beneficiaries want, let’s do it
- Representative Morikawa shared that substantial funding is coming to Kekaha Agricultural Association improve waterways from Mana to Kekaha, which includes Pu‘u ‘Ōpae and will provide water that is needed, so DHHL will need to help
 - A beneficiary shared that the funding is \$10.8 million to help improve the water system and thanked rep. Morikawa
- How much of the Act 279 funding is left?
 - The \$600 million is completely expended
 - Hanapēpē Phase 2 and Pi‘ilani Mai Ke Kai (Anahola) were the only Kaua‘i projects included
 - About half of the funds were allocated to projects in Maui
 - One of the constraints of the Act was that it could not be spent in existing homesteads, which was a source of frustration for some homestead communities because there are a lot of needs in aging and older homesteads
- What is the status of Hanapēpē?
 - Phase 2 is still under development – there have been some hiccups with the developer but they understand that they are very behind schedule
 - DHHL staff present at the meeting did not know the new timeline for completion
- Can DHHL push for homesteads without loans, mortgage and just give beneficiaries the ‘āina instead of waiting ? We have been waiting for too long, we know how to live on ‘āina, live off water catchment, and build with what we have
 - This is alignment with what is planned for Pu‘u ‘Ōpae – there is a special category of homesteading called Kuleana Homesteading or off-grid style homesteading
 - Given the land without the typical county subdivision standard infrastructure. DHHL will put in gravel roads and lot metes and bounds
 - In return, it is a much more expedited process
 - For the Regional Plan, we can include homesteading in Pu‘u ‘Ōpae as a priority project and we can articulate what that looks like for West Kaua‘i beneficiaries and reflective of your vision for this area

Community Values Discussion:

Meeting attendees broke out into three smaller groups to discuss community values before reconvening to report back. Below is a summary of the report back. The group notes are included as Attachment 3.

Group 1:

- 'Ohana
 - We take a lot of pride in our community and how we define it (like what we consider the West Side).
 - Knowing who your family is—not just immediate, but your broader community.
 - Carrying on traditions of your ancestors that come from your community.
- Aloha
 - Showing love to each other.
 - Treating people with care and kindness in everyday life.
- Aloha 'Āina
 - We really take pride in our land here and we want to preserve it.
 - Strong connection to and responsibility for the land.
- Helping Each Other
 - Being in the community, everybody helps each other.
 - If you see a neighbor in need, you help them.
- Respect
 - Self-explanatory, but understood as a core value guiding how people treat one another.
- Unity
 - Being united as one, as a community.
 - Emphasis on togetherness and shared identity.
- Responsibility
 - Take action and not only talk about it.
 - Actually doing the work and following through.
- Mālama
 - Take care—of each other, the land, and the community.
 - Caring for what is so precious to us.
 - Recognition that without water, we have nothing.
 - Importance of resources from all the way down to the ocean.

Group 2:

- Traditional Values / Core Values
 - Our common values include traditional/Hawaiian values we need to return to.
 - Values named: sustainability, integrity, compassion, respect, collaboration, honesty.
 - We need the land, and the resources to sustain ourselves.
 - We need to get back to our traditional values, our Hawaiian values.
- Mālama
 - We need the mentality of taking care of.
 - Applies to people across generations and to the community as a whole.

- Reflects responsibility for both family and broader community well-being.
- 'Ohana & Multi-Generational Living
 - Many multi-generational families living within one home.
 - Kūpuna are both cared for and also taking care of the younger generation.
 - Call for DHHL and systems to support this lifestyle.
 - Suggestion to “allow lessees to build an ADU (additional/supplemental dwelling unit)” without delays.
 - Would help 'ohana on the waiting list and those who cannot afford rent.
 - Provides space for extended family on your land.
 - Helps younger generations who are “moving to the states” because they can't afford anything here.
- Housing & Land Issues
 - Past land allocations (e.g., in the 1990s) described as poor.
 - Need to reconsider how land is valued and used.
 - Concern that there is too much value on housing and not enough on land/resources.
 - We need our land back.
- Resilience
 - Learned from kūpuna and hardships they experienced.
 - We're a resilient people.
 - We show up for one another and share our resources.
- Sustainability & Self-Sufficiency
 - Examples:
 - Sharing garden beds and soil and plants.
 - Teaching people how to grow their own food.
 - Encouraging small-scale gardening as a starting point.
 - Someone brought up aquaponics as a community solution.
 - As long as we have water then we can sustain ourselves.
 - There should be a symbiotic relationship with land.
- Kākou
 - Everyone helping each other.
 - Example: each household to grow three things and share.
 - Bring items to a community stand.
 - No judgment—people take what they need and everybody can eat.
- Accountability & Responsibility
 - Everyone needs to do their part.
 - Having checks and balances within the community.
 - If issues arise:
 - Approach people directly and call them out in a loving way.
 - Avoid blasting them on social media and instead go talk to them and ask if they need help.

- Rooted in care, not punishment.
- Education & Youth
 - Need for accountability and education to be instilled in schools.
 - Teaching younger generations through guidance and setting consequences for actions.
 - Reinforcing traditional values early on.
- Infrastructure / Cost Concerns
 - Example of cesspool to septic conversion:
 - Required changes coming (e.g., by 2050).
 - High cost (\$30k rising to 50K+and potentially more).
 - Question of whether Hawaiian Homes will help.

Group 3:

- Values that guide and shape the community include:
 - Food sustainability
 - Watching out for our neighbor
 - Aloha, 'ohana, kauhale
 - Kuleana, kōkua, mālama 'āina
 - Being “hardworking”
 - Generational sustainability
 - Mālama our kūpuna
 - Ahupua'a system, specific to the area
 - Education and “ho'ona'auao mau” (continued learning) for the kanaka
- Food Sustainability
 - Having access to 'āina to grow and sustain food systems.
 - Checking and cleaning our water from the top down and making that data available to everyone.
 - Ensuring people have access to learning about sustainability: we hear it, but do we really know how it works?
 - Need for access to 'āina to start projects and grow food.
- **Circular Economics / Local Economy**
 - Living off the land, growing food, and selling it.
 - Money/benefits return back to the people.
 - **Aotearoa (New Zealand)** has similar systems that are working very well.
 - It could work here because we're all so close and everybody knows everybody - we all know everybody's kids.
- **Sustainability Across Time**
 - Making sure that we have enough for today and tomorrow.
 - Focus on **long-term resource management**, not just immediate needs.
- **Drought & Environmental Conditions**
 - Need for **drought tolerant plants** given the dry conditions

- Must select crops that we can produce and grow in this area.
- **Kuleana & Preparing the 'Āina**
 - Clean the grounds before kanaka goes onto the 'āina
 - Make land available for the public.
 - Ensure 'āina is ready for our people.
- **'Ohana / Kauhale**
 - My kids, my grandkids, my great grandkids being able to live in Kekaha forever.
 - Long-term family presence on the land so it is a generational home
 - Creating space a wahi that is safe for us
- **Sense of Safety**
 - When you pass the Hanapēpē bridge I kind of get worried but when I'm in Kekaha, I know I'm safe
 - Able to leave our doors unlocked because - feel like all of the 'ohana around me is watching over my hale
 - You know whose kids belong to whom and community looks out for each other
 - There are a lot of keiki in this community - four schools within one-mile radius
 - Need to be sustainable and also need more housing

Combined List of Community Values Identified:

- **'Ohana**
 - Kauhale - multi-generational living, including kūpuna, parents, and keiki living together
 - Families support one another and know one another
 - Desire for future generations to remain in the community and not be displaced
- **Aloha**
 - Caring for one another
 - Supporting neighbors in times of need
 - Extending respect to 'āina
- **Kuleana**
 - Personal and collective responsibility
 - Accountability and willingness to address issues directly within the community
- **Lōkahi**
 - Working together as one community
 - Maintaining unity and trust
 - Collective decision-making and shared responsibility
 - Resilience
- **Hōihi**
 - Respect
 - Integrity
 - Compassion
 - Honesty
- **Kōkua**

- Helping neighbors
- Creating a safe space
- Sharing resources and knowledge
- Ha‘aha‘a - community watches over each other’s homes and keiki
- Instill guidance in younger generations
- Circular economics
- **Mālama ‘Āina**
 - Protecting and caring for the land
 - Making ‘āina ready
 - Preserving the agricultural character and values of the Westside
 - Recognizing that ‘āina is essential to our identity
- **Ola i ka wai**
 - Water is not a commodity – it is the blood of the land
 - Access to wai

Project Ideas:

During the meeting discussion, a number of project ideas were shared, which are shared below and will be revisited as the beneficiary meetings continue. These ideas include:

- Re-prioritizing getting beneficiaries onto the Pu‘u ‘Ōpae lands
- DHHL working with KAA to deliver water to Pu‘u ‘Ōpae
- Supporting accessory dwelling units (ADUs) on existing lots to support intergenerational living
- Cesspool to septic conversion support

Closing Discussion:

Following the report back, Lillie closed the meeting with some announcements and summary of the process moving forward.

- A meeting attendee made announcement that a group secured 100+ acres of agricultural land in Kekaha for community farming
 - Water is secured for the land and it will be divided into small plots
 - There will be no cost for the first five years
 - A future meeting is planned in the coming months and more information will be shared
- Lillie shared that the next meeting will recap the first meeting a report back a synthesized list of the community values to review and will continue discussions on a community vision. From there the future meetings will move into discussions on priority projects.

Next Meeting:

Tuesday, June 2, 2026
 6:00 – 8:00 p.m.
 Waimea Theatre

Attachment 1 - Meeting Handouts



West Kauaʻi Regional Plan Update

BENFICIARY CONSULTATION MEETING #1

Tuesday, May 12, 2026

6:00 to 8:00 p.m.

Waimea Theatre

Meeting Agenda

Purpose: To update the West Kauaʻi Regional Plan to reflect the current priorities, vision, and values of beneficiaries in the Kona moku of Kauaʻi.

Outcomes:

- Know what a DHHL Regional Plan is, how it is used, and how it will be created.
- Know the proposed timeline for the Regional Plan Update.
- Gather input to create a list of community values and write a vision statement for the region.

Schedule:

1. Sign-in
2. Welina, Pule, & Introductions
3. Presentation on Regional Plan Update
4. Visioning Exercise Part 1
5. Refreshment Break
6. Visioning Exercise Part 2
7. Closing & Next Steps

Next Meeting:

Tuesday, June 2, 2026

6:00 – 8:00 p.m.

Waimea Theatre



COMMUNITY VALUES & VISIONING ACTIVITY

Part 1: Community Values

What are the community values that represent your homestead?

1. What are the values that guide/shape this community?
2. What does that look like in your community?

Part 1: Community Values

When your mo'opuna are grown up and living in the homestead, what is life like for them?

1. What does your homestead and/or broader West Kaua'i community look like?
2. What does it feel like?
3. What about the community are your mo'opuna proud of?

Attachment 2 - Meeting Presentation



DEPARTMENT OF HAWAIIAN HOME LANDS

WEST KAUA‘I REGIONAL PLAN UPDATE

Beneficiary Meeting #1

May 12, 2026

6:00 – 8:00 p.m.

Waimea Theatre

TODAY'S AGENDA



6:00 p.m. Welina, Pule, & Introductions

6:15 p.m. Presentation on Regional Plan Update

6:30 p.m. Visioning Exercise Part 1

7:05 p.m. Refreshment Break

7:15 p.m. Visioning Exercise Part 2

7:50 p.m. Closing & Next Steps

INTRODUCTIONS



Department of Hawaiian Home Lands:

- Lilliane Makaila, Acting Planning Program Manager
- Lauren Esaki-Kua, Kaua‘i Planning Liaison
- Kialoa Mossman, Planner



Bowers + Kubota Consulting:

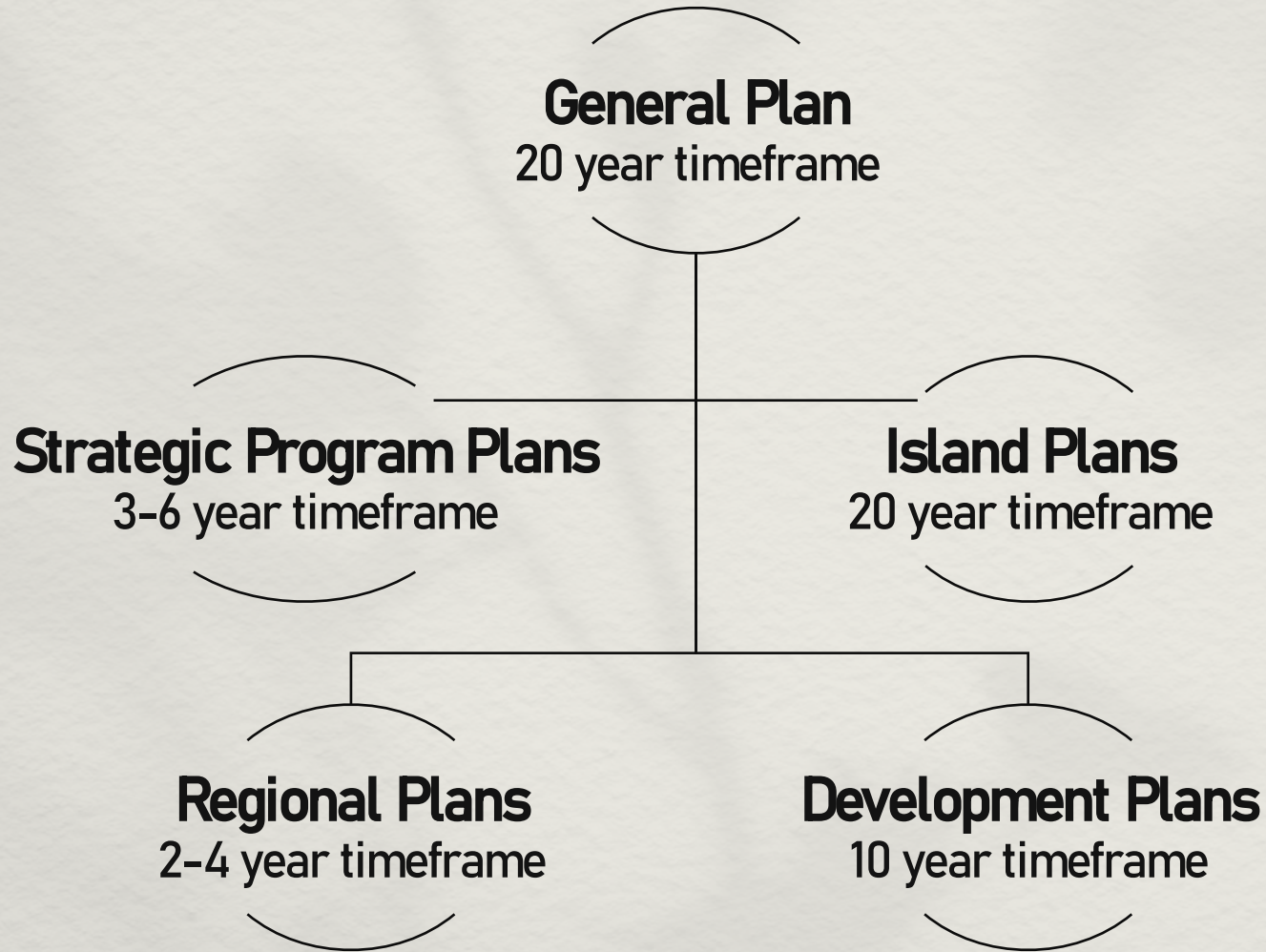
- Jared Chang, Planning Manager
- Malachi Krishok, Project Manager

MEETING KULEANA



- **Be Open:** open your mind, ears, and heart. Take home new ideas and information.
- **Be Comfortable:** move around and use the facilities.
- **Be Respectful:** please do not interrupt the person that is talking, show aloha, treat others how you would like to be treated.
- **Be Creative:** work towards future solutions/aspirations.
- **Agree to Disagree:** accept that others may have different perspectives and opinions.
- **Cellphones off or on silent:** please take calls/texts outside

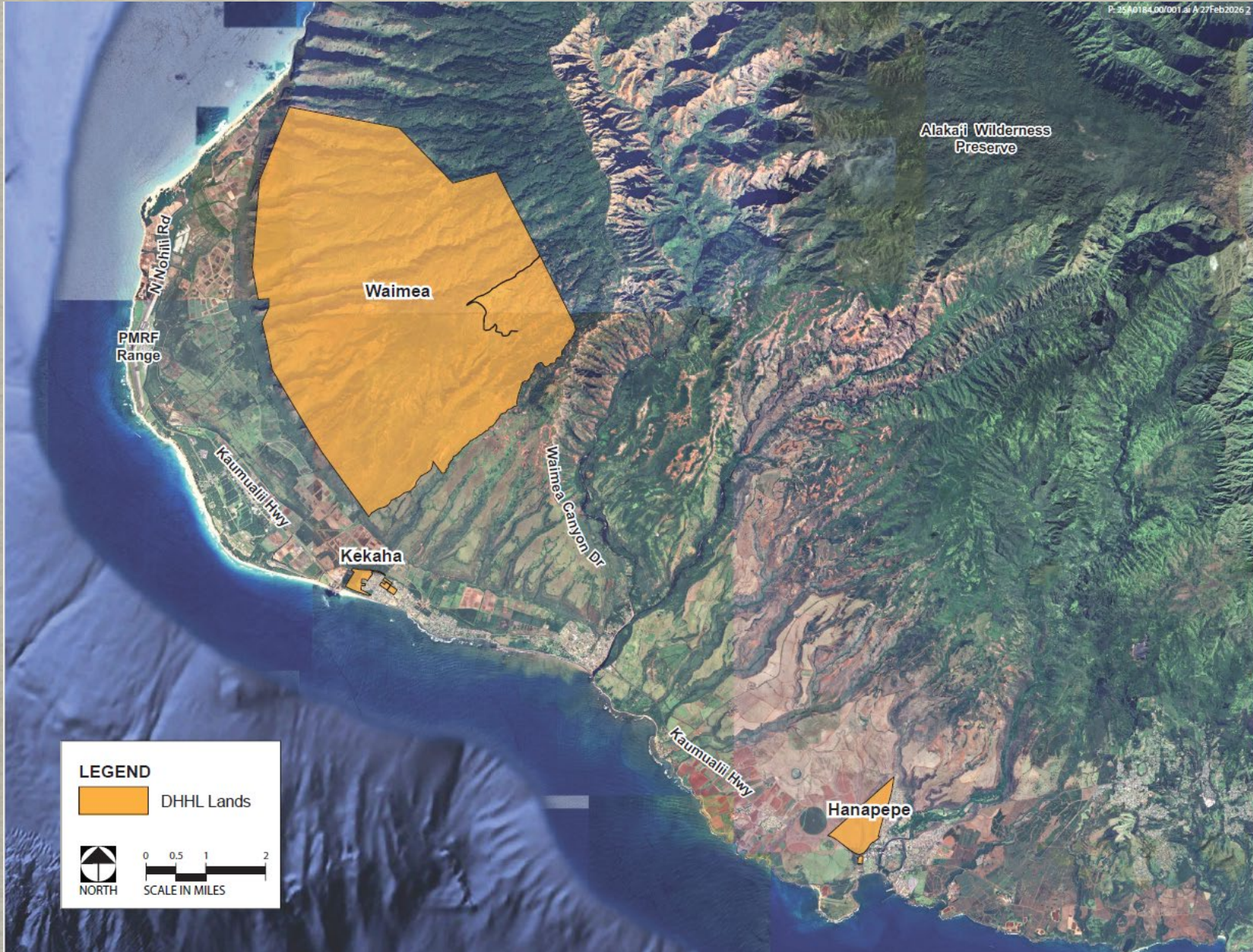
WHAT IS A REGIONAL PLAN?



Purpose of Regional Plans:

- Empower the community to be involved in planning for their region.
- Assist the community with identifying and prioritizing projects within the region.
- Identify detailed action steps to implement priority projects.

WEST KAUA'I REGIONAL LANDS



DHHL Lands:

Waimea: 15,061 acres

Kekaha: 52 acres

Hanapēpē: 365 acres

WEST KAUA'I

(Waimea, Kekaha, Hanapēpē)



- **Homestead Regional Profile**
- **Regional Lands & Development**
- **Infrastructure**
- **Homestead Concerns & Priorities**

REGIONAL PLAN

February 2011



WEST KAUA'I

(Waimea, Kekaha, Hanapēpē)



- **Homestead Regional Profile**
- **Regional Lands & Development**
- **Infrastructure**
- **Homestead Concerns & Priorities**

REGIONAL PLAN

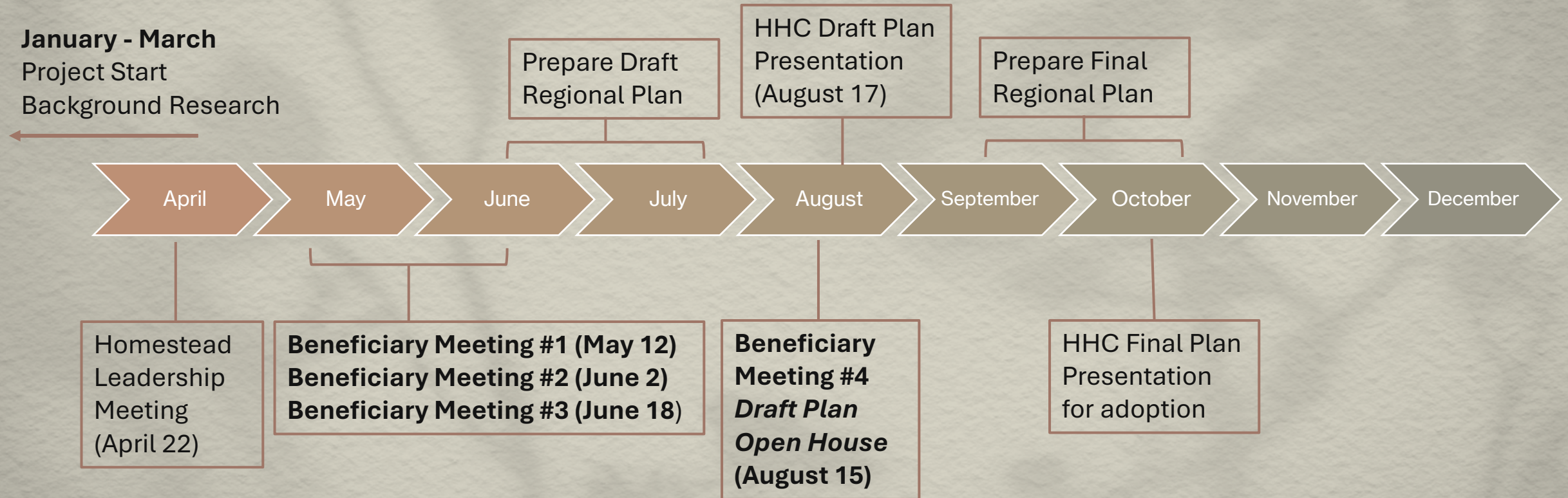
UPDATE ALSO INCLUDES:

1. **Vision Statement and Community Values for the Region.**
2. **Implementation Action Steps for each Priority Project.**

February 2011



PROJECT SCHEDULE



1 2011 PRIORITY PROJECT UPDATES



2011 PRIORITY PROJECTS

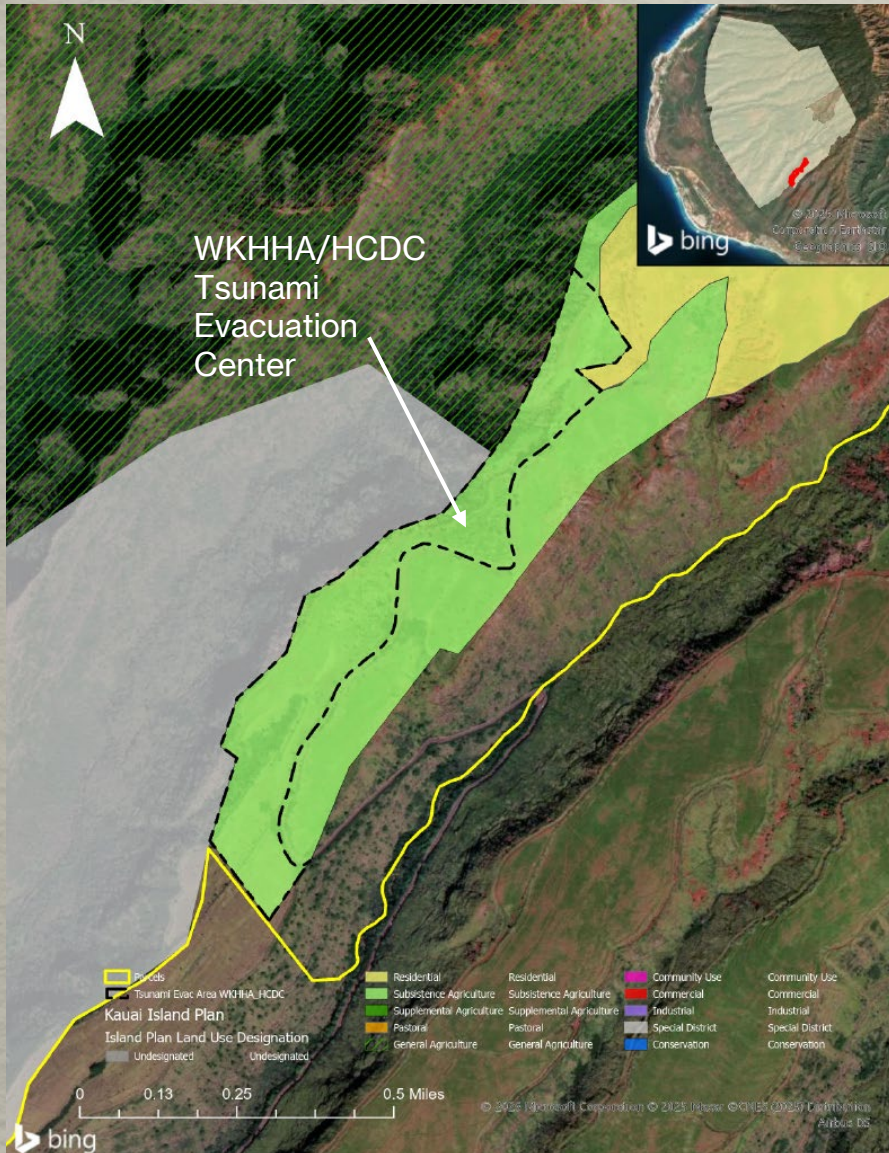


Develop an Agricultural & Water Plan

Status:

- HHC issued KKHA a 20-year license for 231 acres at Pu'u 'Ōpae for Phase I of its Farm and Irrigation Plan.
- West Kaua'i Energy Project hydroelectric project and associated infrastructure improvements no longer moving forward.
- Exploring alternative water management approaches.

2011 PRIORITY PROJECTS



Develop a Multipurpose Evacuation & Education Center/Shelter

Status:

- Planning Office and Land Management Division coordinating with beneficiary organizations to advance a multi-purpose facility on high ground off Kōke'e Road consistent with Island and Regional Plans.

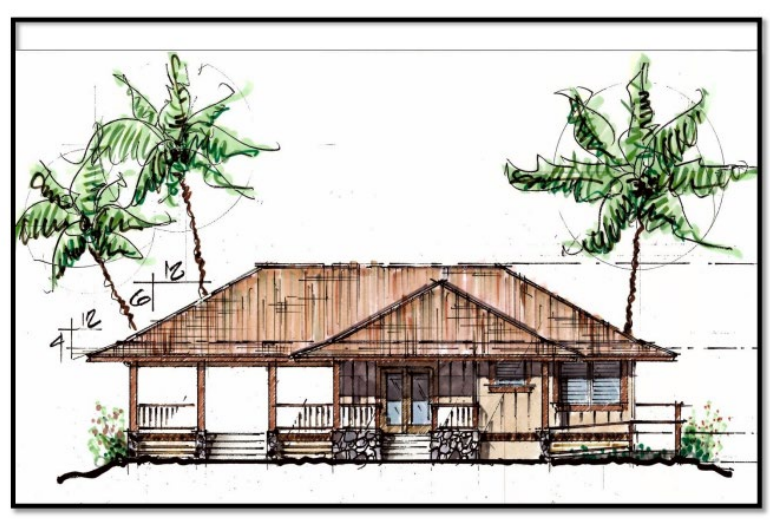
2011 PRIORITY PROJECTS



Kekaha Enterprise Center

Status:

- Completed & Operating.



2011 PRIORITY PROJECTS



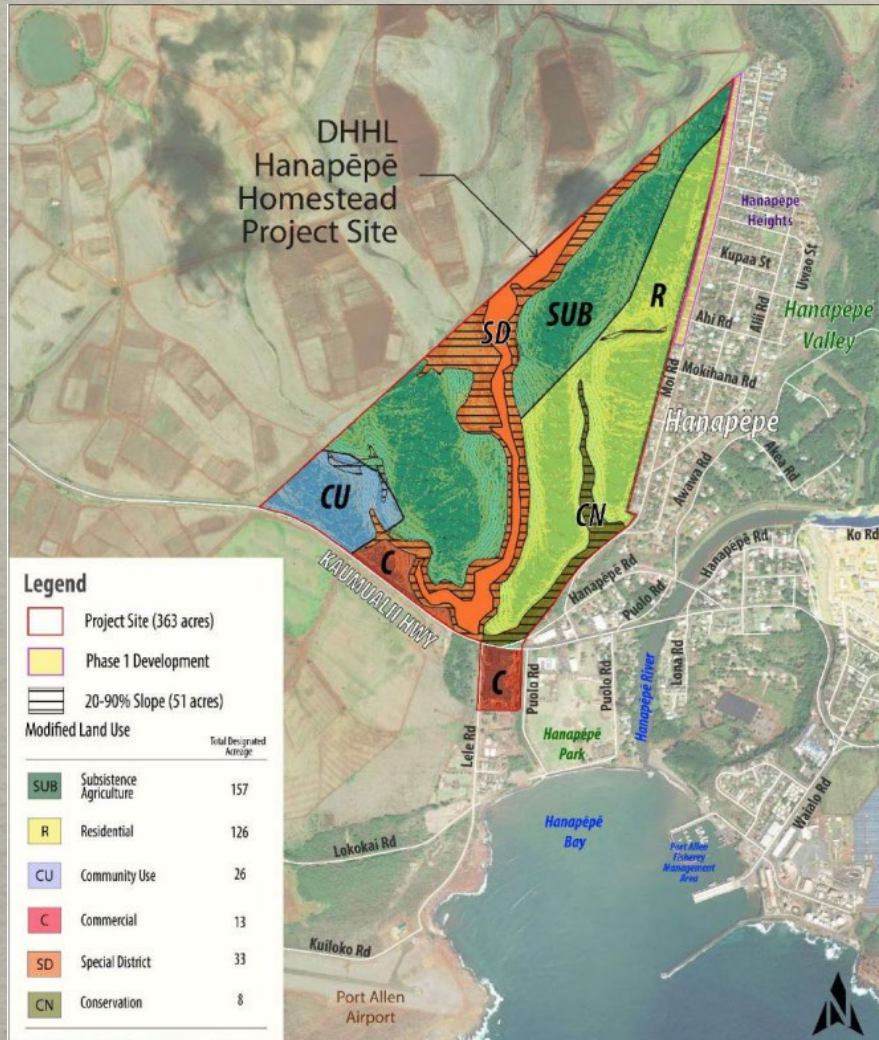
Develop Renewable Energy Projects Compatible with Agriculture

Status:

- DHHL is reevaluating options for renewable energy projects in West Kaua‘i due to the hiatus of the West Kaua‘i Energy Project.



2011 PRIORITY PROJECTS



Develop Agricultural Uses for Hanapēpē Farm Lots/Lease Areas

Status:

- The Hanapēpē Homestead Community Master Plan and EA for 349 acres adjacent to existing homesteads approved, October 2020.
- Phase 2 subdivision (82 lots and lot/enhancement improvements) underway.
- Phase 3 planned for agricultural, cultural, and recreational uses.

2 COMMUNITY VALUES & VISIONING ACTIVITY



PART 1 – COMMUNITY VALUES

What are the community values that represent your homestead?

1. What are the values that guide/shape this community?
2. What does that look like in your community?

REFRESHMENT BREAK

***PLEASE BE SEATED AND READY FOR THE NEXT ACTIVITY
IN 10 MINUTES!***

PART 2 – VISIONING

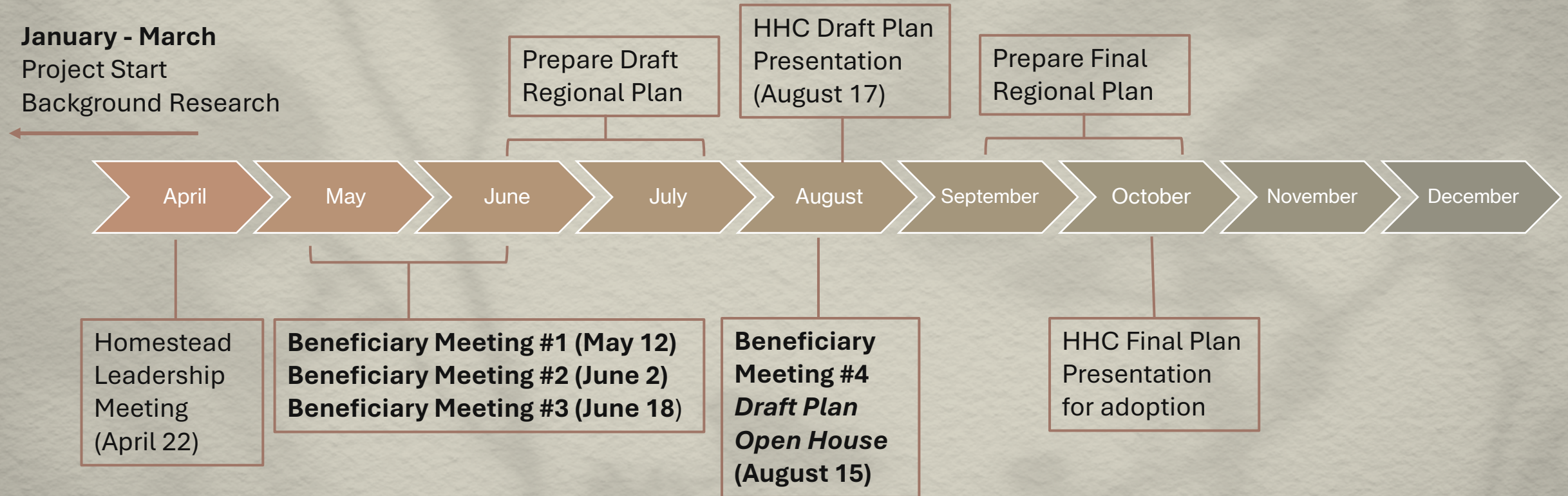
When your mo‘opuna are grown up and living in the homestead, what is life like for them?

1. What does your homestead and/or broader West Kaua‘i community look like?
2. What does it feel like?
3. What about the community are your mo‘opuna proud of?

3 CLOSING & NEXT STEPS



PROJECT SCHEDULE



NEXT STEPS & OTHER OPPORTUNITIES TO COMMENT:



Presentation slides and discussion recap will be posted on DHHL website



Next Meeting: Tuesday, June 2, 2026, 6:00-8:00 p.m. at Waimea Theatre

- Draft Vision Statement and list of Community Values
- Identify issues and needs of the community
- Create list of potential projects

STAY IN TOUCH

Check the website for updates and information:

<https://dhhl.hawaii.gov/po/kauai/west-kauai-regional-plan-update-2026/>



DHHL Contact:
Lauren Esaki-Kua
lauren.a.esaki-kua@hawaii.gov
(808) 271-0138



B+K Contact:
Malachi Krishok
mkrishok@bowersandkubota.com
(808) 836-7787

Mahalo!

Attachment 3 - Breakout Group Notes

Questions

②
①

1) What is the status of subdivision efforts @ Puu Opae?

- Was not included in Act 279 (\$600m) but since \$ has been spent new opportunities for priorities coming.
- Waimanalo example...

2) Who picks the priority projects, HHC?

- Community beneficiaries pick the projects.

3) In past, this community offered to help department but dept went in different direction and grant was lost.

Questions

(2)

— Rep Markkawa, leg. is funding \$10m to KAA for water system improvements that will benefit DPHC subdivision efforts.

4) How much left of Act 279 \$600.

— all gone. Kawai went to Hanaope Ph 2, Piilani Mai Kekai, Note \$ could not go towards existing Homesteads in the Act.

5) Status of Hanaope targets?

— Phase 2 in development, developer had some hurdles, behind schedule.

6) Can we prioritize/push for more
pastoral/ag lots instead of residential
we know how to homestead the land
don't need mortgages, etc. (pi'opae)

- Kuleana lots uses, yes.

- Kids can play, community

Watches out for each other
- a lot of eyes

Huihi - Royal

Ohana - Need to keep land with Ohana. Skipped a
generation w/ people passing without getting
a lease, so now looking to the next gen
to keep it in the Ohana.

Group 1 Part 1 Comm. Values ①

Kokua - Covid times everyone
Came together to help.

Lokahi - living in a community everyone
knows each other

Aloha - Kids can play, community
watches out for each other

Helehelu - "a lot of eyes"

Hoihi - Respect

Ohana - Need to keep land with Ohana. Skipped a
generation w/ people passing with out getting
a lease, so now looking to the next gen
to keep it in the Ohana.

Community Values

②

Kekoa
Tobohi

Kekoa people will help others in need, don't matter who or where from. Its jst the way Kekoa people act, not every place on Kauai like that.

Aloha Aina

Ola ika wai

Malama ~~Aina~~ - Showing up, discipline + self discipline
taking care of each other

Kuleana - Responsibility, action not just waha

- Puu o Pae Master plan had this stuff in it....
can use as a jumping off point.

Community Values

Ohana

Kuleana

- I know your father/mother
- own personality
- respect the 'ohana, the "whole"
- carry on traditions lifestyle

Aloha

'āina

kōkua

Mālama

Hō'ihi

Ha'aha'a

Ola i ka wai

Lōkahi

Aloha

③ West side

- Wanapēpē
- Kekaha
- Waiamea
- Pakala

"pass the bridge"

"piko"

- Sharing gardening beds & soil
- Aquaponics → Sustainable & good food
- As long as get Water (Blood of the land)
 - ↳ Not a commodity
 - ↳ Symbiotic relationship w/ land
 - ↳ Too much value on housing
 - ↳ about our Cxn to 'āina
 - ↳ hand back
- Earth Justice represents West side
 - ↳ Waiamea Point
 - ↳ labor rights

① Comm. Values

#3

* Mālama

- Mentality of taking care
- DHHL plays role
- Accountability & Education
↳ instilled in schools

* Kuleana

* 'O hana

Multi-generational

- ↳ Allow building ADU
- * give kids a chance

- Traditional Values

↳ Sustainability

↳ 'Aina - need the land & Resources

- Integrity

- Compassion

- Respect

- Collaboration

- Honesty

③

Comm Values

- Choice of land
 - ↳ What's given to us is poor
- Resilient
- Showing up for one another
 - ↳ Sharing gardening beds & soil
- Aquaponics → Sustainable & good food
- As long as get water (blood of the land)
 - ↳ not a commodity
 - ↳ Symbiotic relationship w/ land
 - ↳ Too much value on housing
 - ↳ about our Cxn to 'āina
 - ↳ Land back
- Earth Justice represents West Side
 - ↳ Waimānā River
 - ↳ Water Rights

③

Comm Values

- have Community live responsibility
 - ↳ Everyone do their part
 - ↳ Accountability - checks + balances
- Kākou not me
 - ↳ When separate people identity is gone
- Septic Conversion is a concern
 - ↳ ~\$40k
- For younger generations, how do we enforce & keep each other accountable?

ex.
Kekaha
Sugar
Mill

- ↳ Call each other out
- ↳ instill guidance in younger gen.
- ↳ Set boundaries
- ↳ consequences for action

Comm Values

④

- Everyone Still Smiles at one another
- More Malama
- Talking w/ parents, give kids options to teach
 - ↳ Watch group
- What legacy will we leave next gen?

Watching out

- security

- safe space

- collective responsibility

→ so safe that kids can run on the road

Ohana/Kauhale/interrelated

- Generational Homes
- one hānau/kulaiwi
- Aloha i Kekahi i Kekahi

- Ke Akua

- Ola Pono

- Mālama

- Word work

- Generational sustainability

- Mālama kōpū

- Ahupua'a system
Wahi 'āina

Education/Ho'ona'aua/Aoao Kanaka

VALUES

- FOOD Sustainability

- Watching out for neighbors

- Aloha

→ Ohana/Kauhale/interrelated

- Kuleana

- Ke Akua

- Ola Pono/mind, body, spirit

- Mālama 'āina

- Hard working


↳ Generational Sustainability

- Mālama kūpuna

- Ahupua'a system SPECIFIC to
wahi 'āina

- Education/Ho'ona'auau/Aoo Kanaka

Food sustainability

- Access to wai - checking/cleaning from the ^{top} - make data public
- Access to learning → sustainability
- Access to 'āina  • Circular economics / Ho'oponopono
ex. Anahulu
= have to have an in, out
- Permaculture • Fertilizer (no buying)
- ~~Know~~ Get enough for today & tomorrow
- Drought tolerant plants
- Kanaka for 'auamo Kuleana
- Cleaning grounds before kānaka goes on 'āina
- make data public
- Making 'āina ready