

DHHL.HAWAII.GOV

Department of Hawaiian Home Lands

ORIENTATION: Honomū (Subsistence Agriculture)

**Hawai'i Agriculture Waitlist
January 24, 2026**

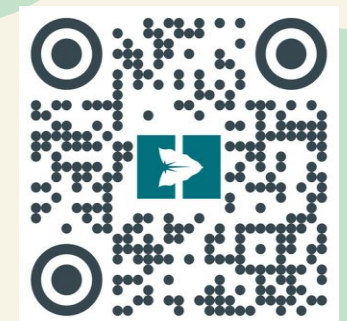


ROADMAP FOR TODAY

TIME	EVENT
9:30	Welcome/Pule/Opening Remarks
9:35	<ul style="list-style-type: none">• Project Info & Project Lease• Successorship• Agricultural Resources• Home Building Resources
10:00	FAQs with Panel
10:30	Questions & Answers
11:30	Open House
12:00	Pau

For More Information

To learn more about the department and awards process, visit DHHL's YouTube page.



dhh.l.hawaii.gov



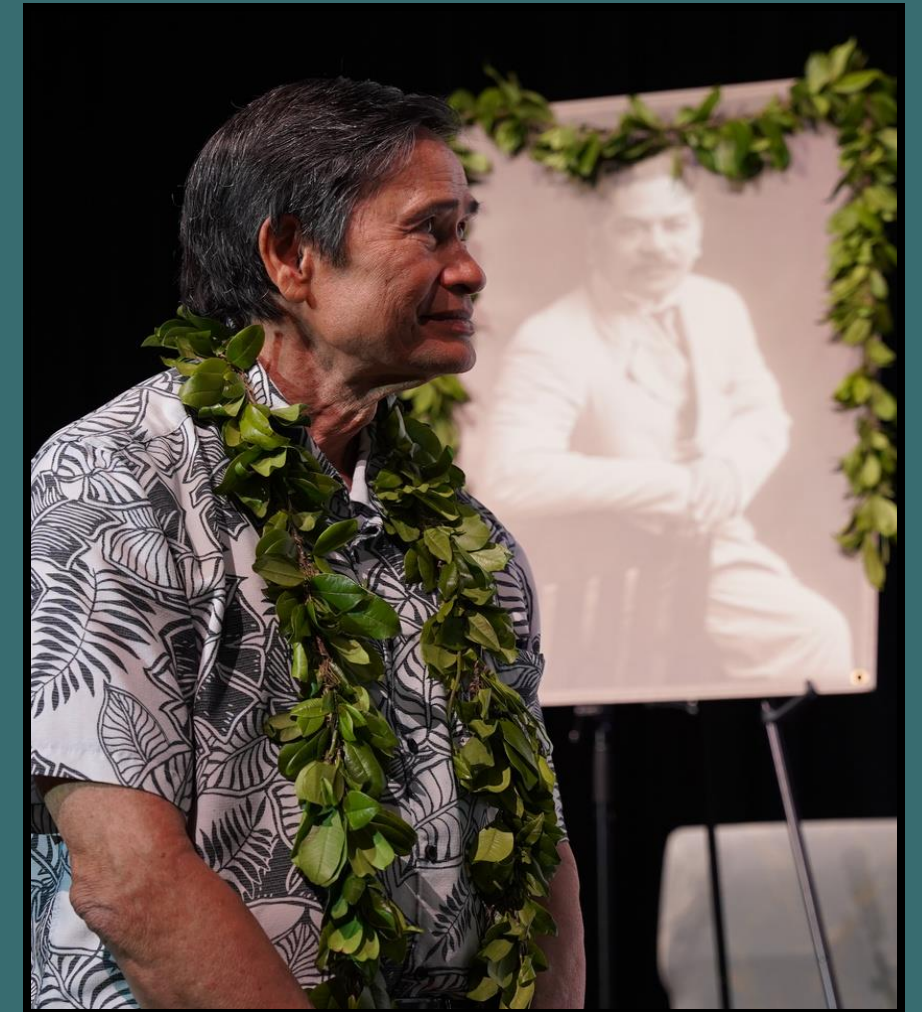
DIRECTOR'S MESSAGE

‘Ano‘ai me ke aloha e nā pulapula o ka ‘āina,

Project leases provide a timely solution to the prolonged wait our community has endured for far too long. This strategy enables the Department of Hawaiian Home Lands to guarantee homes to our beneficiaries even before a development is complete. With a project lease in hand, our ‘ohana can preserve a legacy to pass down to their keiki, ensuring their homestead remains within the family for generations.

A thriving homestead community starts with each and every person in this room and I urge all of you to seize this opportunity and the many more that lie ahead.

Pupukahi i holomua! Unite to move forward.



"With these projects, we are not merely constructing homes but nurturing communities that reflect our culture and shared vision for a better tomorrow."

Kali Watson

DHHL Director Kali Watson



VISION OF PRINCE KŪHIŌ

On July 9, 1921, President Warren G. Harding signed the Hawaiian Homes Commission Act, 1920 as amended, an effort spearheaded by Prince Kūhiō and a group of advocates.

Through its passage, the United States set aside approximately 200,000 acres of land to establish a permanent homeland for native Hawaiians, who were identified as a “landless and dying” people as the result of disease, intermarriage, and loss of lands.

The Hawaiian Homes Commission Act intended to return native Hawaiians to the land while encouraging them to become self-sufficient homesteaders on the leased parcels of trust land.



Prince Jonah Kūhiō Kalanianaʻole

Wildfire Management & Prevention Video



Department of Hawaiian Home Lands

- **Other Hawaii Projects**
- **Project Info & Project Lease**
- **Successorship**
- **Agricultural Resources**
- **Home Building Resources**

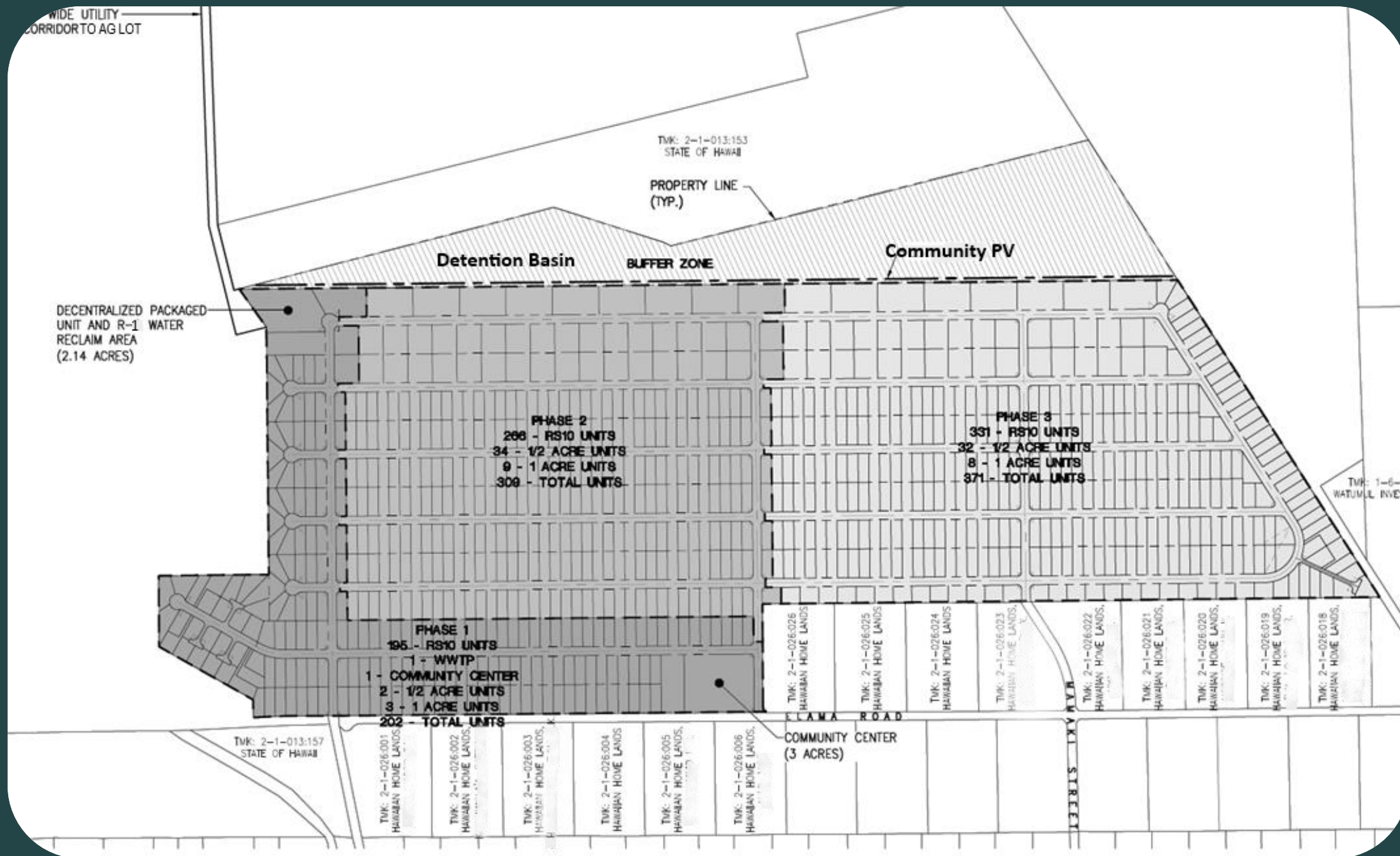


DHHL.HAWAII.GOV

Department of Hawaiian Home Lands

- **Other Hawaii Projects**





- **Awarding:**
400 Project Leases

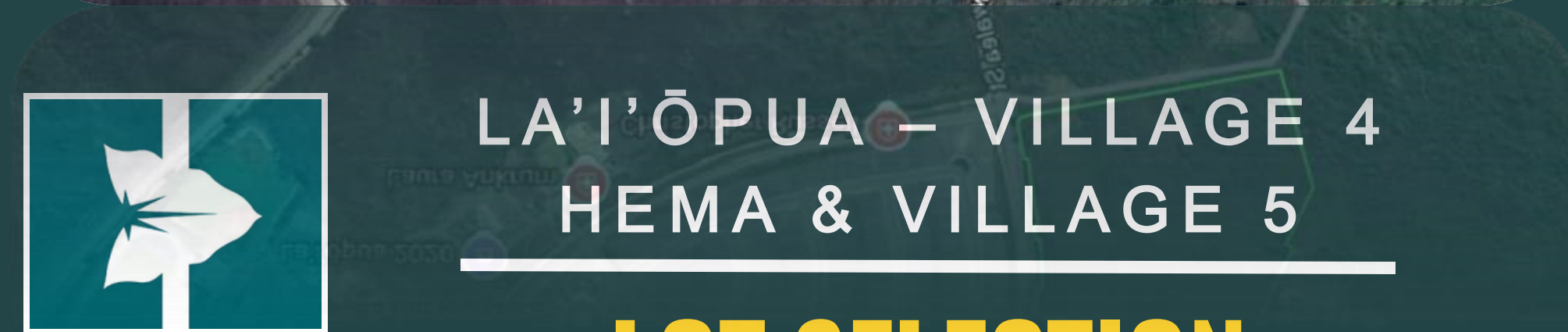
- **Projected Development Schedule:**
2026-2031

- **Projected Occupancy:**
Starts in 2031



PANA'EWA ELAMA ROAD

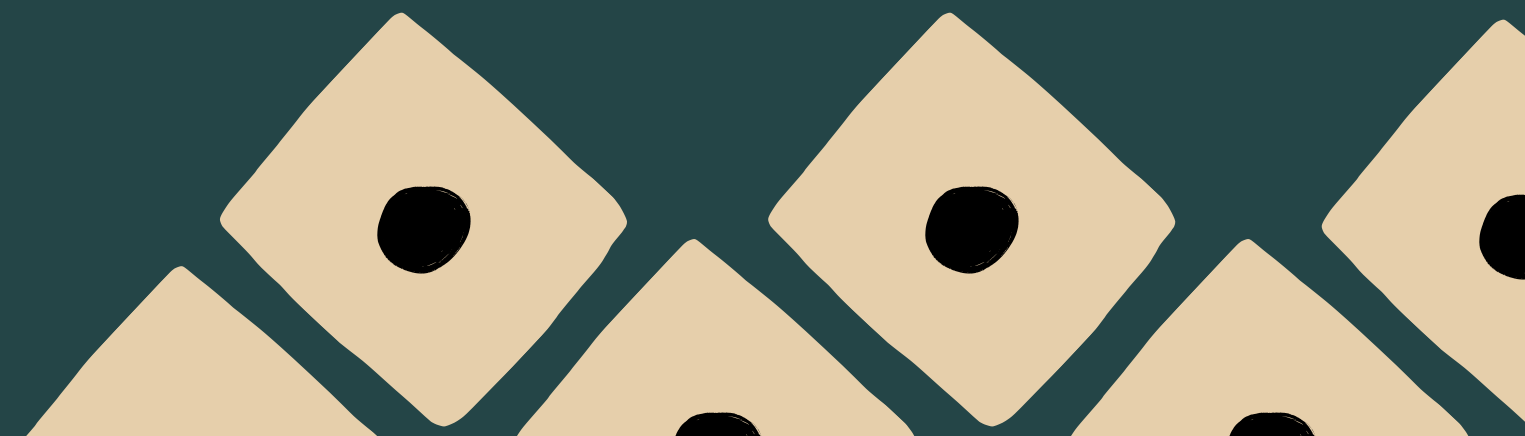
PROJECT LEASES



Downloaded from <http://ajph.org/> on November 10, 2015

LOT SELECTION

- **Award Lot Selection:**
Village 4 Hema: 125
Village 5: 55
- **Projected Development Schedule:** 2026-2028
- **Projected Occupancy:**
Starts in 2026

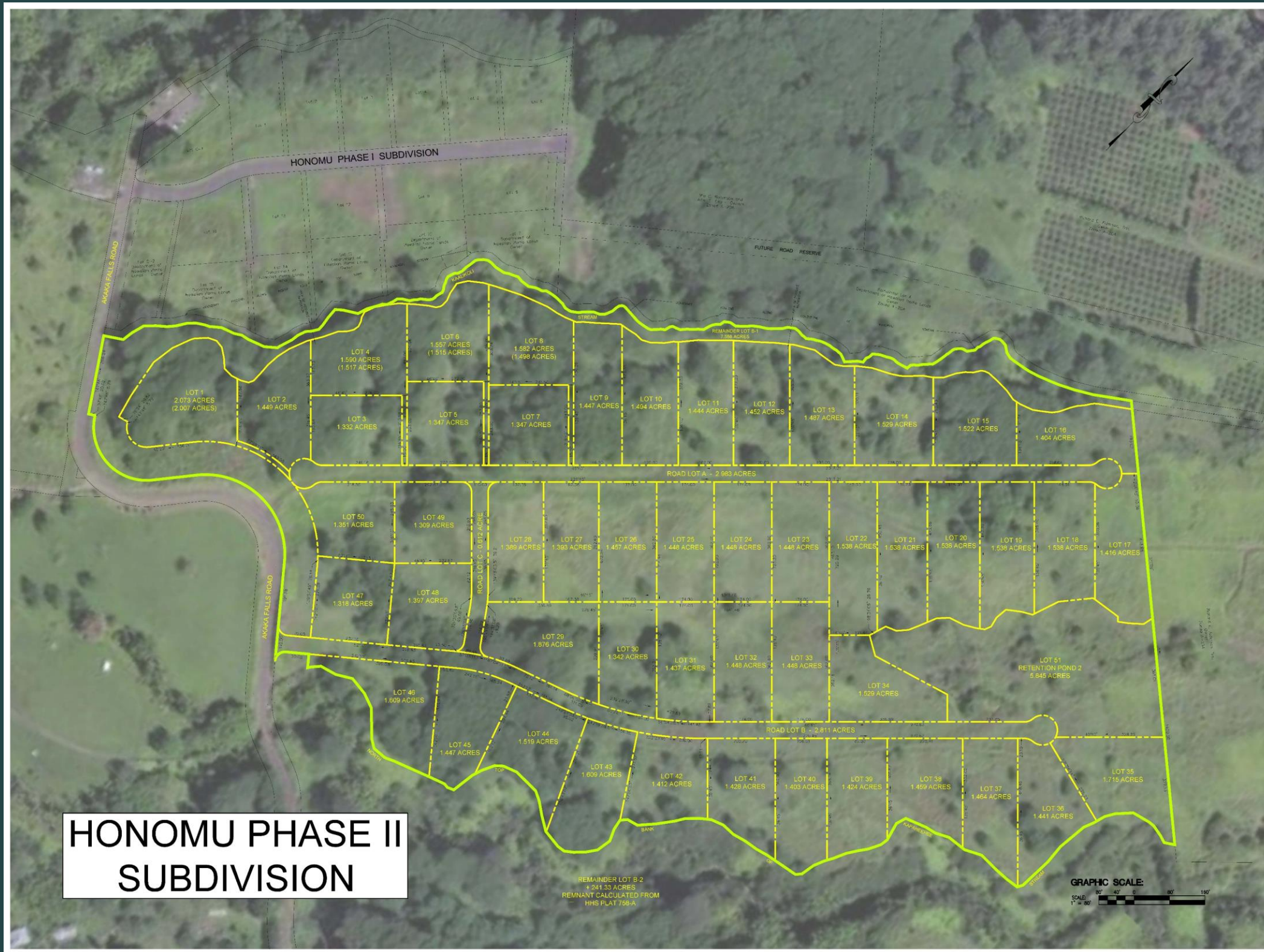


[DHHL.HAWAII.GOV](https://dhhl.hawaii.gov)

Department of Hawaiian Home Lands

- **Project Info & Project Lease**





- **Project Lease Awards:**
50 Project Lease Awards
(Subsistence Agriculture)
- **Projected Development Schedule:** 2026-2031
- **Lot Selection:** 2031
- **Projected Occupancy:**
Starts in 2031



HONOMŪ –(50) SUBSISTENCE
AGRICULTURE LOTS

PROJECT LEASE AWARDS

PROJECT LEASE

OVERVIEW



What is a Project Lease?

- A paper lease granting an undivided interest in the Honumū Subsistence Agriculture Project
- Allows designation and transfer of lease to a qualified 25% successor
- Provides time to meet financial or program requirements

What are the Project Lease requirements?

- Submit the interested response form on/by **FEBRUARY 20, 2026**

When will I receive the Project Lease?

- Sign on March 21, 2026 (subject to change). More information to follow.

DHHL.HAWAII.GOV

Department of Hawaiian Home Lands

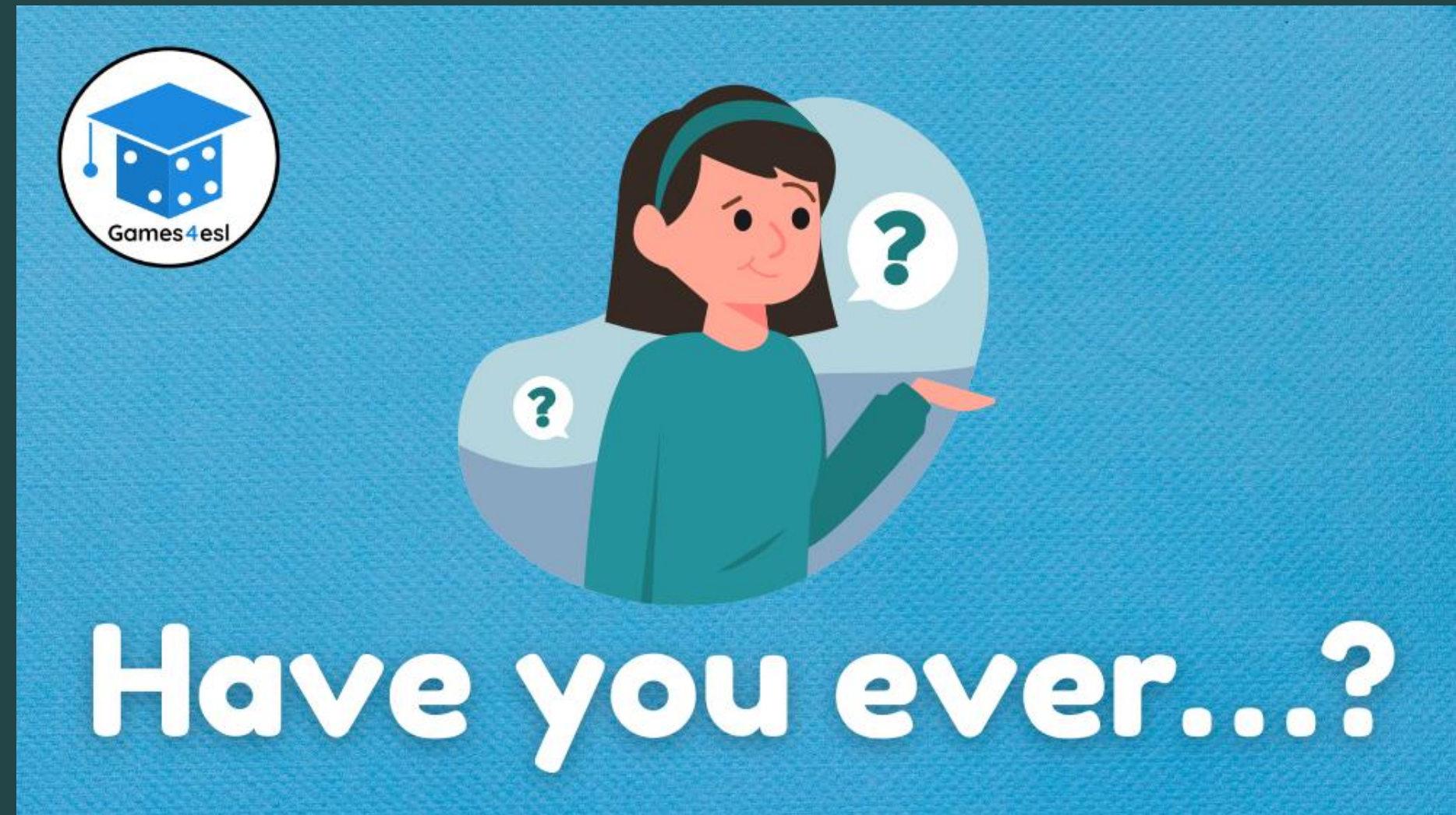
- **Successorship**



TRANSFER

of Project Lease

- Lessees can Transfer their Lease to:
 - Any 50% Hawaiian
 - Their spouse, children, grandchildren, siblings who are at least 25% Hawaiian.



HHCA Section 209 **Successors to Leases**

Eligible Successors at 25% Hawaiian

Husband, wife, children, grandchildren, brothers, or sisters.

Eligible Successors at 50% Hawaiian

Father and mother;

Widows and widowers of children;

Widows and widowers of brothers and sisters;

Nieces and nephews.

HAWAII ADMINISTRATIVE RULES 10-3-63

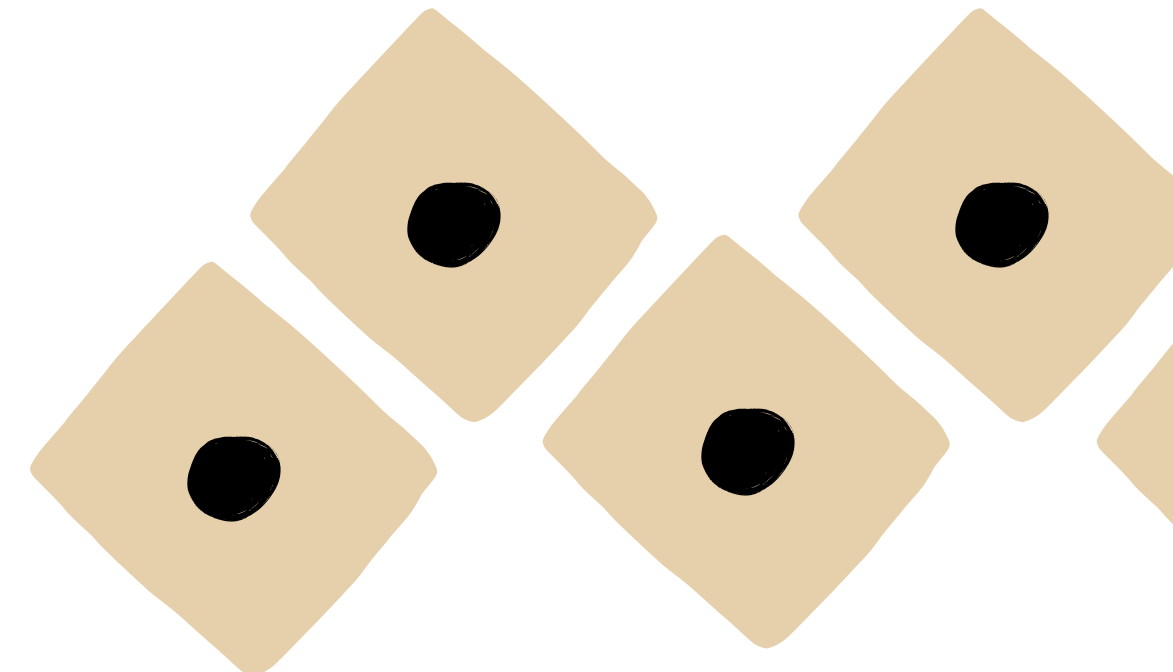
Lessee Dies Without Designating Successor(s)

Eligible Successors at 25% Hawaiian

- 1) Husband 3) Children 5) Siblings
- 2) Wife 4) Grandchildren

Eligible Successors at 50% Hawaiian

- 1) Father and mother;
- 2) Widows and widowers of children;
- 3) Widows and widowers of brothers and sisters;
- 4) Nieces and nephews.



Successors to Application Rights and Leases

- Things to remember...
- The relative you designate as a successor is **your** decision.
- Discuss your choice of successor to your application rights or to your homestead lease with your 'ohana so your intentions are made clear. Not having the discussion may cause family issues later.
- Make an appointment with the nearest District Office to file a new or updated designation.



**Things
To
Remember**

NAMING A SUCCESSOR

As a homesteader, you are a property owner, with certain rights and obligations. One of your rights is to decide, in accordance with the law, who you want to succeed to your homestead lease. DHHL will dispose of your leasehold in accordance with your choice, provided, of course, that the person or persons designated are qualified to succeed to the lease

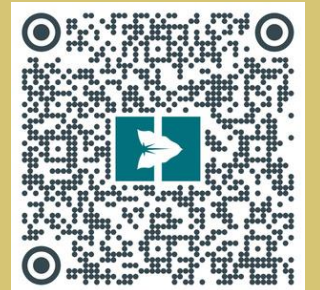


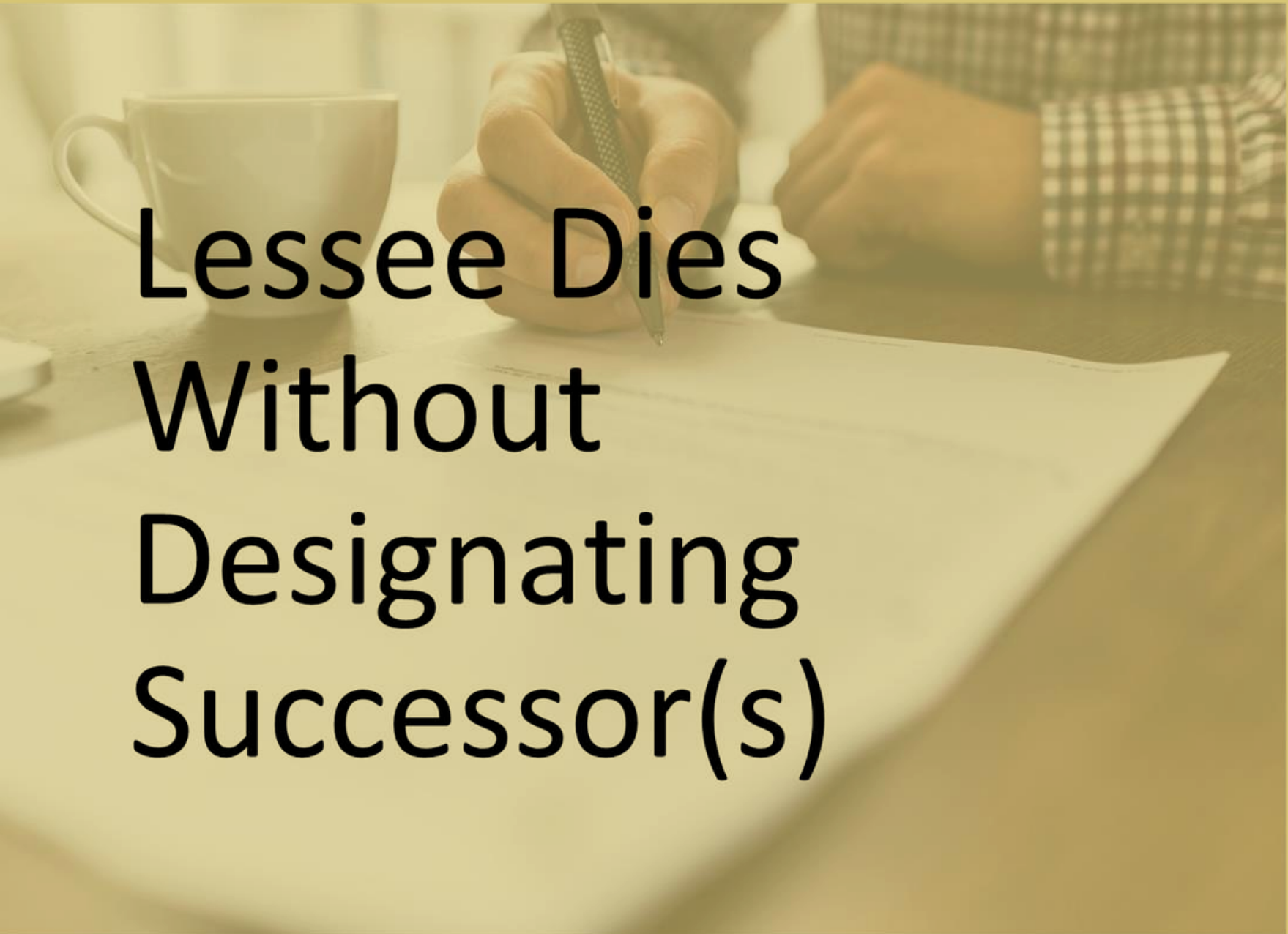
Contact the Homestead Services Division with questions regarding:

- Transfer of leases
- Successorship

Office: 808-730-0270

For answers to frequently asked questions, scan QR code.





Lessee Dies Without Designating Successor(s)

Hawaii Administrative Rules Section 10-3-63. *Notice to successors.*

- The department shall publish a notice at least once in each of four consecutive weeks in a newspaper of general circulation in the State (Honolulu Star-Advertiser, Maui News, The Garden Island Newspaper, Hawaii Tribune-Herald, West Hawaii Today)
- Qualified relatives wanting to succeed to the lease must submit a claim within 120 days of the first publication date.
- Publication is typically twice per year around June 30th and December 31st.

DHHL.HAWAII.GOV

Department of Hawaiian Home Lands

- **Agricultural Resources**



Why Agriculture?

- **Hawaiian Homes Commission Act**
- **Rehabilitation of a People**



HOPE FOR THE FUTURE
PRINCE JONAH KŪHIŌ KALANIANAʻOLE



“After extensive investigation and survey on the part of various organizations organized to rehabilitate the Hawaiian race, it was found that the only method in which to rehabilitate the race was to place them back upon the soil.”





Why Agriculture?

- **Resilience**

grow local and build strength

- **Sustainability**

protect our ‘āina and plan ahead

- **Food Security**

feed ‘ohana and share abundance



What is a DHHL Subsistence Agricultural Lease?

- Smaller lot (less than 3 acres)
- A farm plan is NOT required
- 2/3 cultivation of the ag lot is NOT required
- You can grow crops and raise small animals
- You can grow crops and build a home
- You can grow crops, raise livestock and build a home
- You are NOT required to build a house, so there aren't any financial qualification requirements



COOPERATIVE EXTENSION

UNIVERSITY OF HAWAII AT MĀNOA
COLLEGE OF TROPICAL AGRICULTURE AND HUMAN RESOURCES

CTAHR-DHHL Agricultural Education Program

Kiersten Akahoshi

Jr. Extension Agent, DHHL – Hawai'i County

Phone: (808) 969-8229

email: Kiersten@Hawaii.edu

Office: Komohana Research and Extension Center

875 Komohana St.

Hilo, HI 96720



COOPERATIVE EXTENSION

UNIVERSITY OF HAWAII AT MĀNOA
COLLEGE OF TROPICAL AGRICULTURE AND HUMAN RESOURCES



COOPERATIVE EXTENSION

UNIVERSITY OF HAWAI'I AT MĀNOA
COLLEGE OF TROPICAL AGRICULTURE AND HUMAN RESOURCES



COOPERATIVE EXTENSION

UNIVERSITY OF HAWAI'I AT MANOA



COLLEGE OF TROPICAL AGRICULTURE
AND HUMAN RESOURCES

UNIVERSITY OF HAWAI'I AT MĀNOA





How can I help





Agricultural Resources

DHHL Contact

Lehua Abrigo

Agriculture Program Specialist

lehuanani.k.abrigo@hawaii.gov

(808) 730-0348

CTAHR Contact

Kiersten Akahoshi

*Jr. Extension Agent, DHHL –
Hawai'i County*

Kiersten@Hawaii.edu

(808) 969-8229

Office:

Komohana Research & Extension Center

875 Komohana Street

Hilo, HI 96720

DHHL.HAWAII.GOV

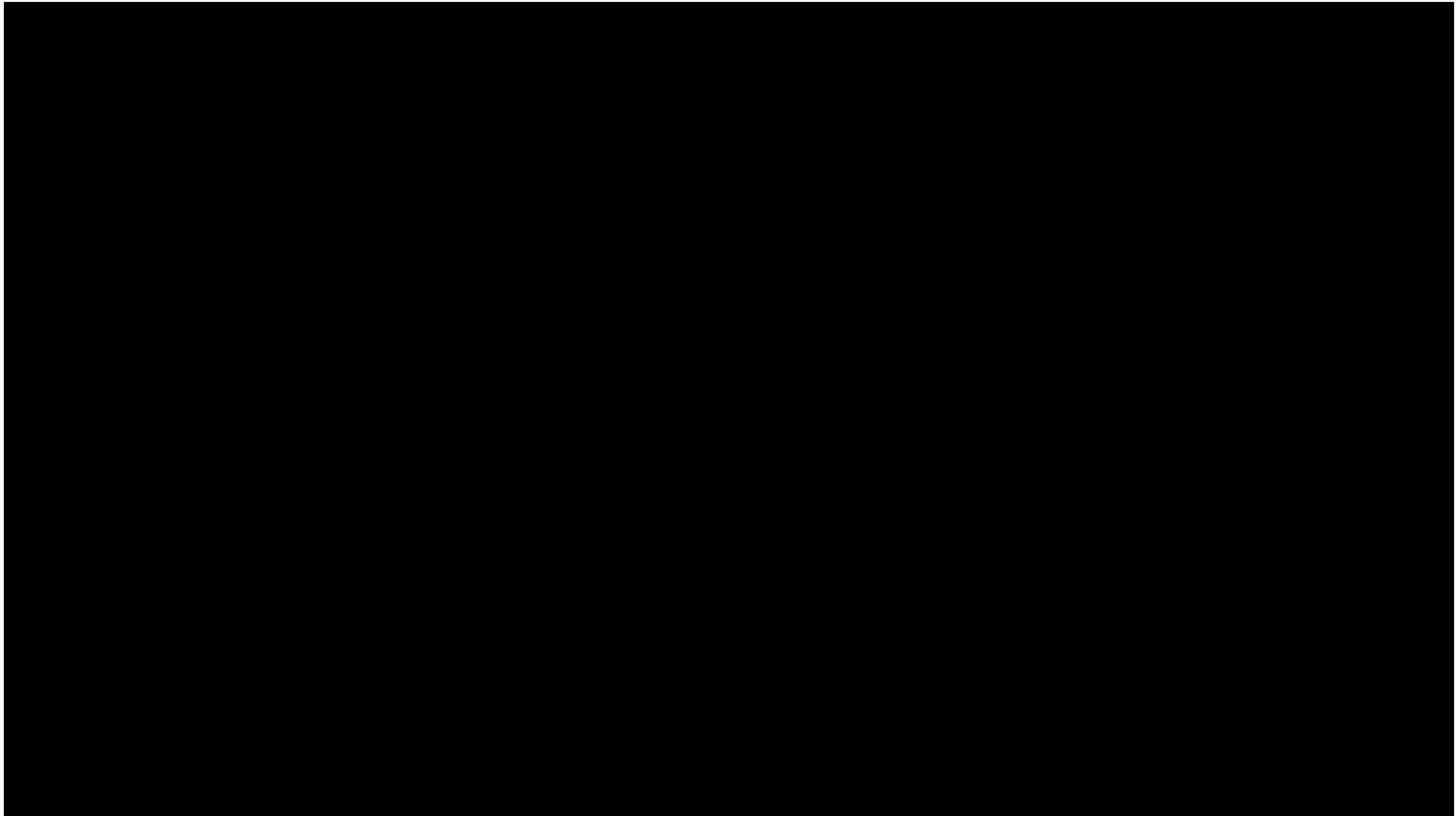
Department of Hawaiian Home Lands

- **Home Building Resources**





Home Building Resources (Vacant Lot)



DHHL.HAWAII.GOV

Department of Hawaiian Home Lands

Frequently Asked Questions



QUESTION #1

If I am not selected for a lot, will I still receive a letter?

Project Lease Awards Meeting

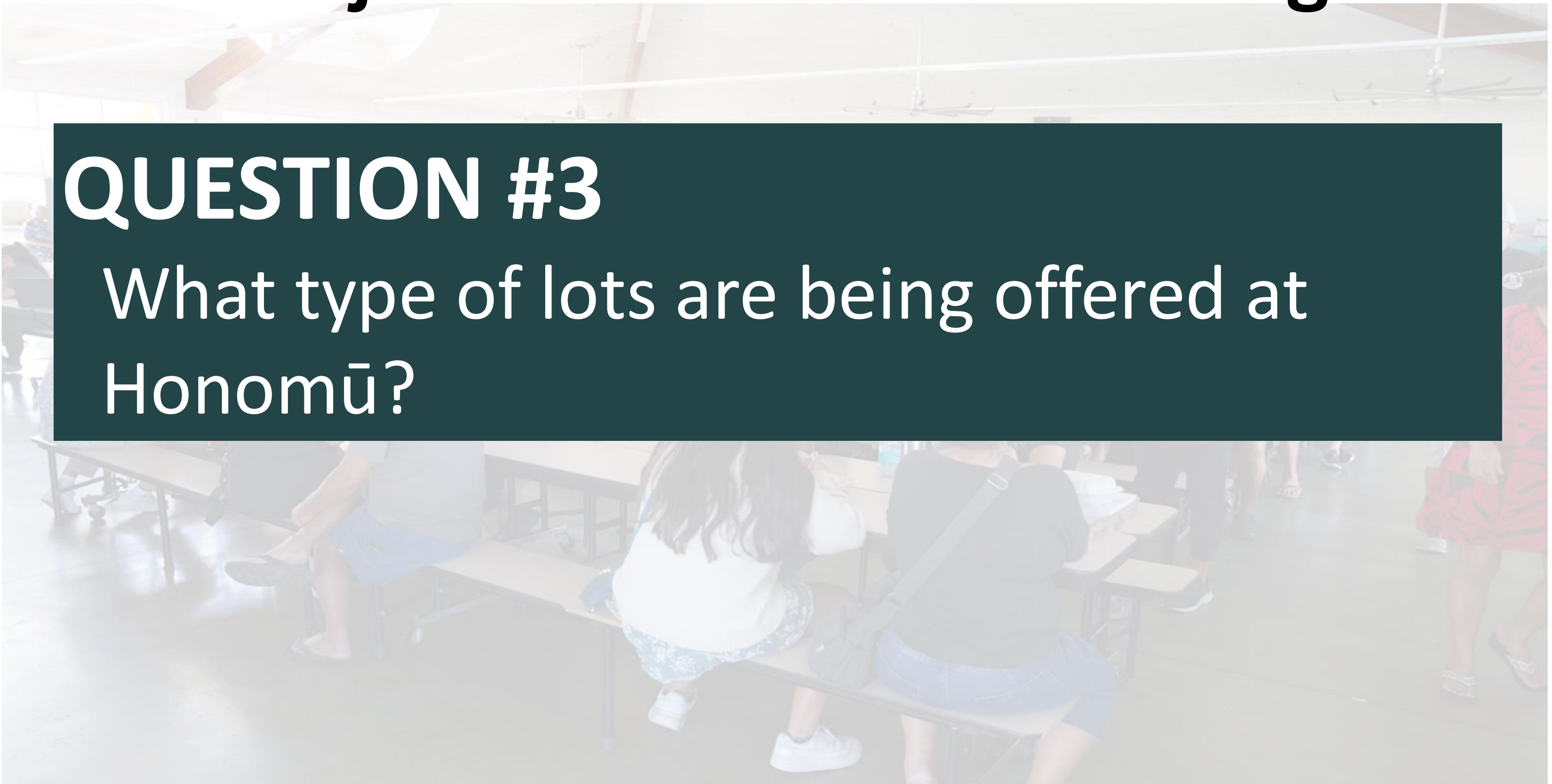
QUESTION #2

What is the most important deadline to remember?

Project Lease Awards Meeting

QUESTION #3

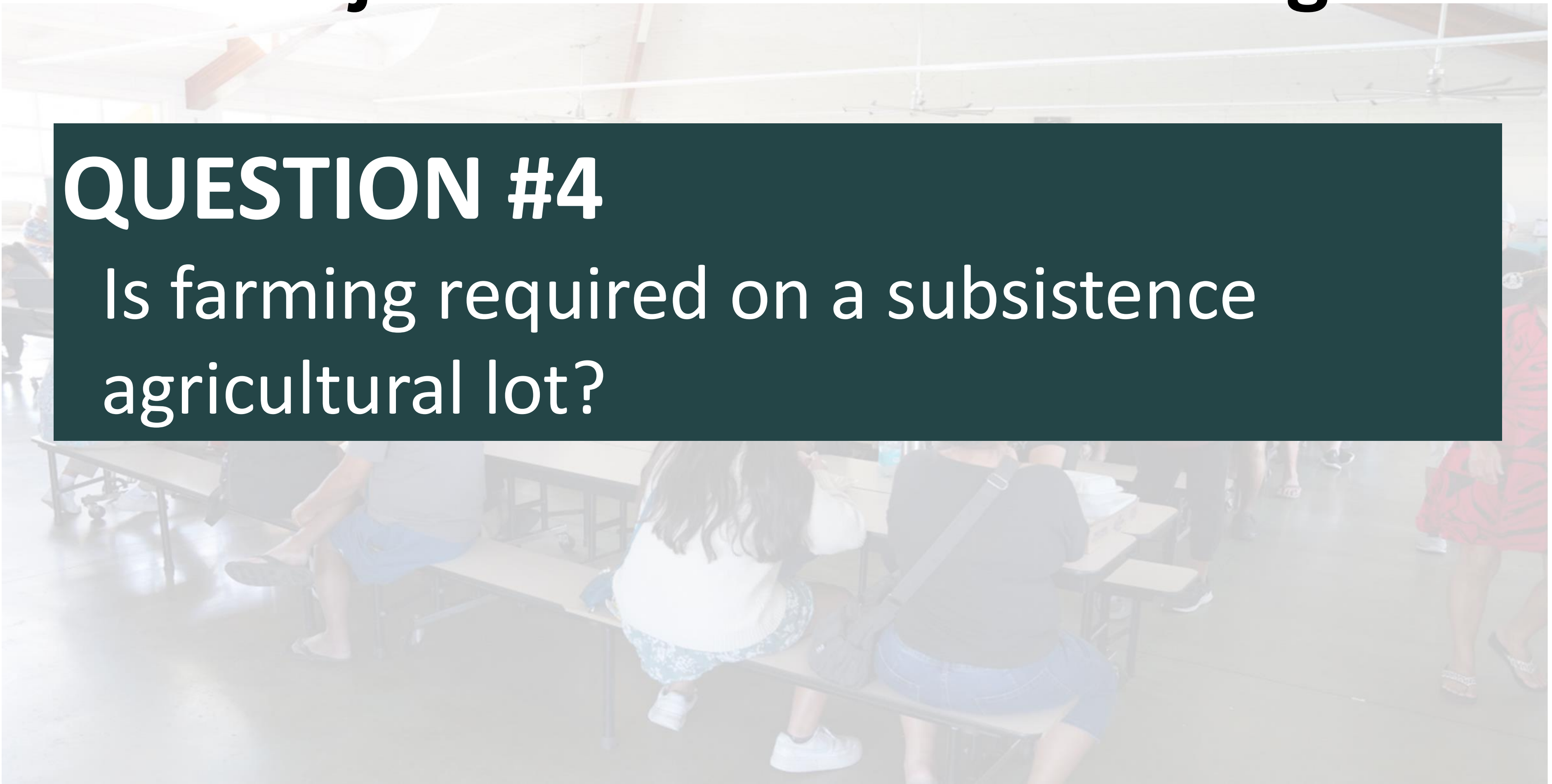
What type of lots are being offered at Honomū?



Project Lease Awards Meeting

QUESTION #4

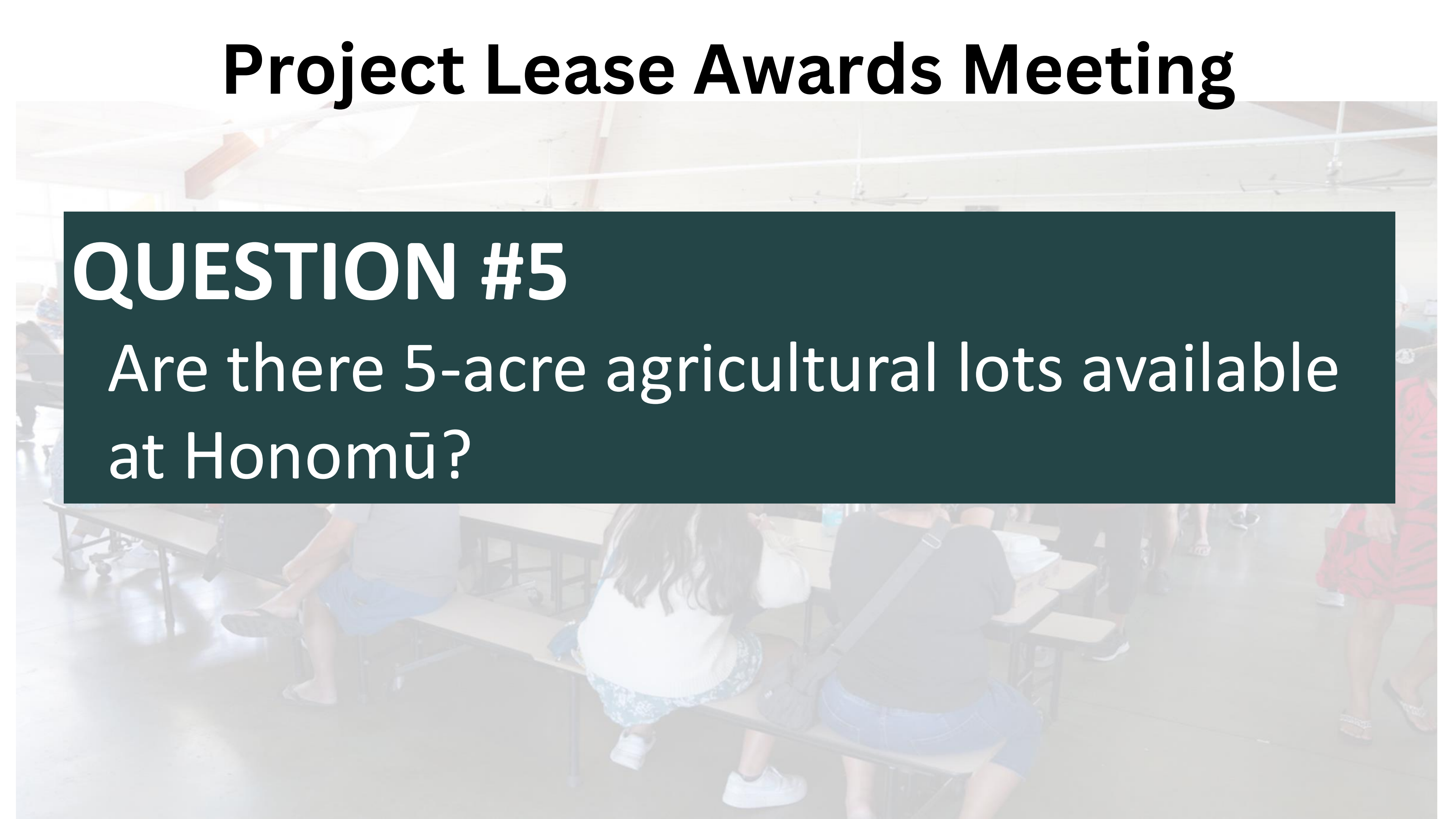
Is farming required on a subsistence agricultural lot?



Project Lease Awards Meeting

QUESTION #5

Are there 5-acre agricultural lots available at Honomū?



Project Lease Awards Meeting

QUESTION #6

When will these lots be completed?

Project Lease Awards Meeting

QUESTION #7

What infrastructure will be available?



Project Lease Awards Meeting

QUESTION #8

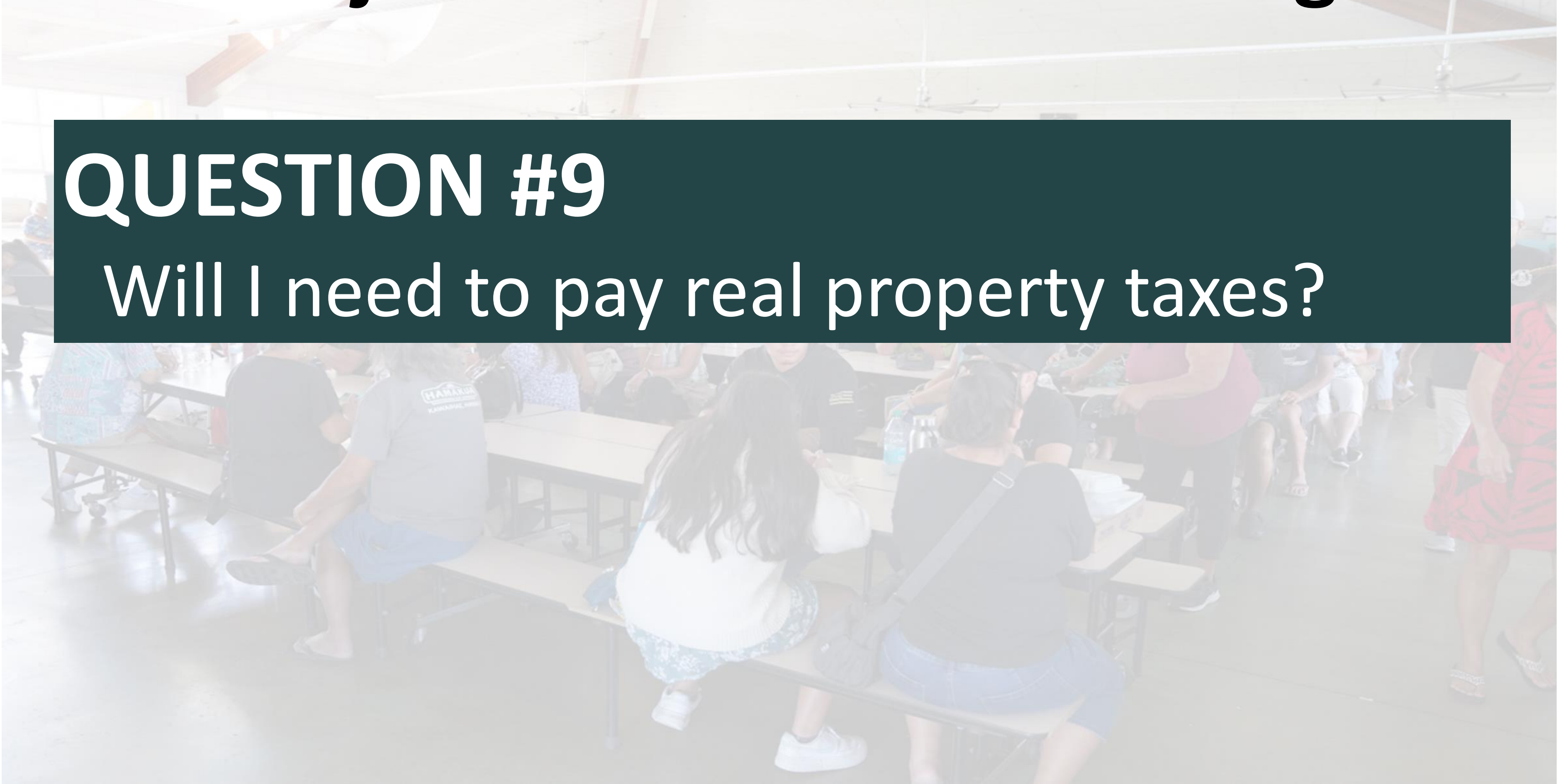
Will utilities be available at Honomū?



Project Lease Awards Meeting

QUESTION #9

Will I need to pay real property taxes?



Project Lease Awards Meeting

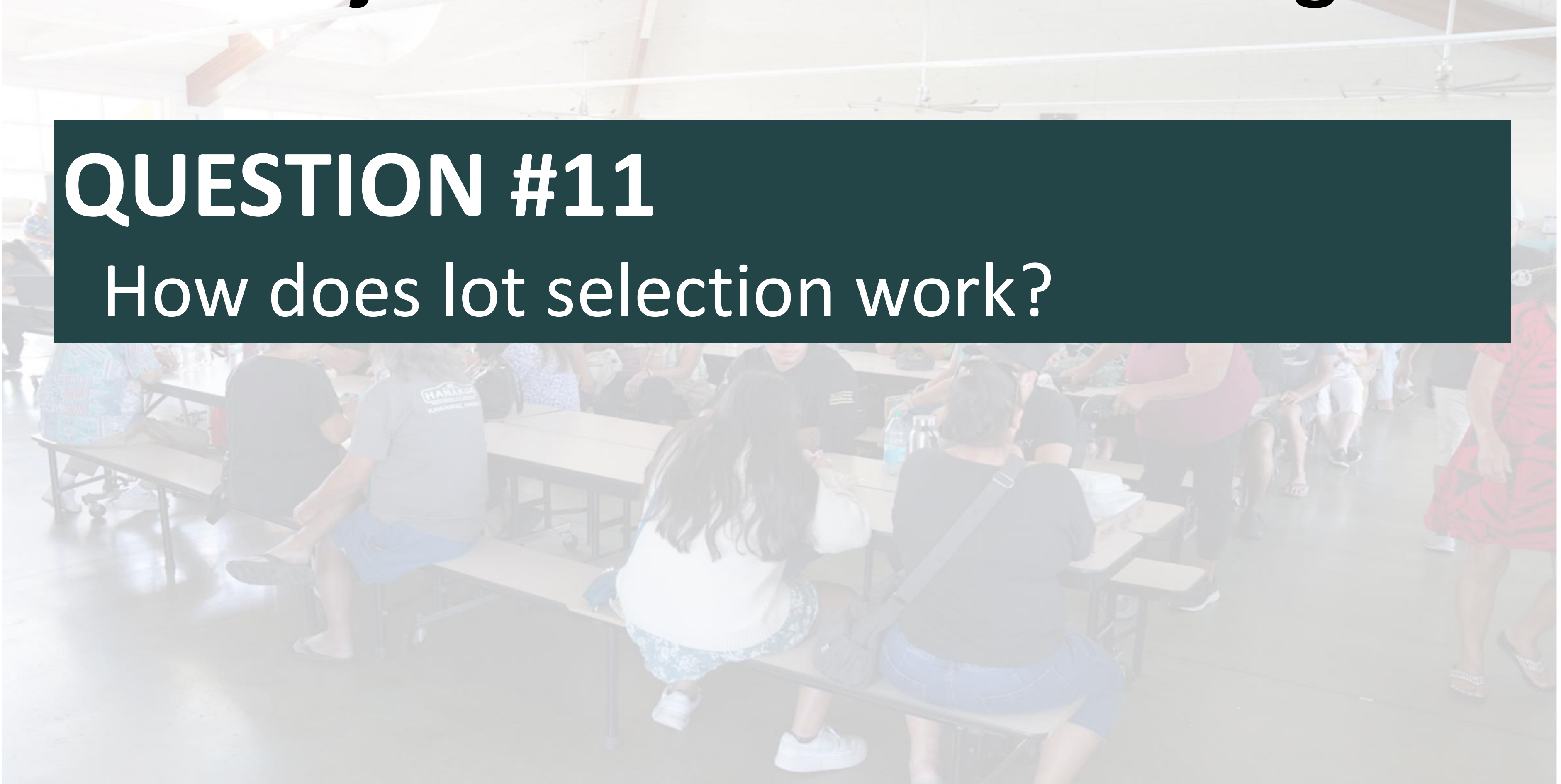
QUESTION #10

If I already have a DHHL residential lease,
can I live on my Honomū lot?

Project Lease Awards Meeting

QUESTION #11

How does lot selection work?



Project Lease Awards Meeting

QUESTION #12

What happens if all lots are selected before my name is called?

Project Lease Awards Meeting

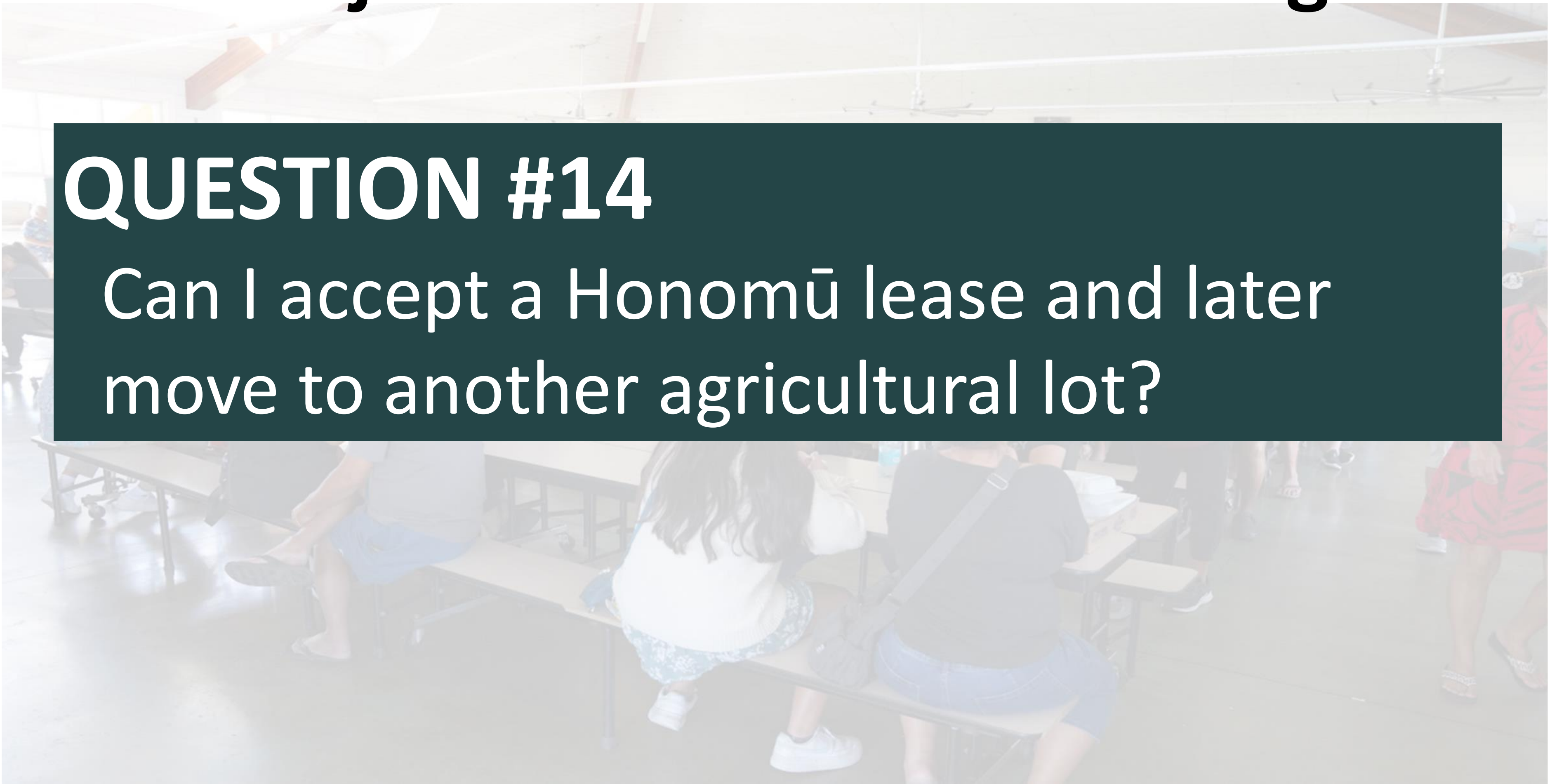
QUESTION #13

If I live off-island, how long do I have to relocate?

Project Lease Awards Meeting

QUESTION #14

Can I accept a Honomū lease and later move to another agricultural lot?



DHHL.HAWAII.GOV

Department of Hawaiian Home Lands

Question & Answers



DHHL.HAWAII.GOV

Department of Hawaiian Home Lands

Open House



MAHALO PIHA!



808-730-0311



dhhl.housing@hawaii.gov



dhhl.hawaii.gov