



HAWAIIAN HOME LANDS

HAWAIIAN HOMES COMMISSION • DEPARTMENT OF HAWAIIAN HOME LANDS

G-1

Molokaʻi Coastal Homestead Community Resilience Plan

April 21, 2025



Community Resilience Plan

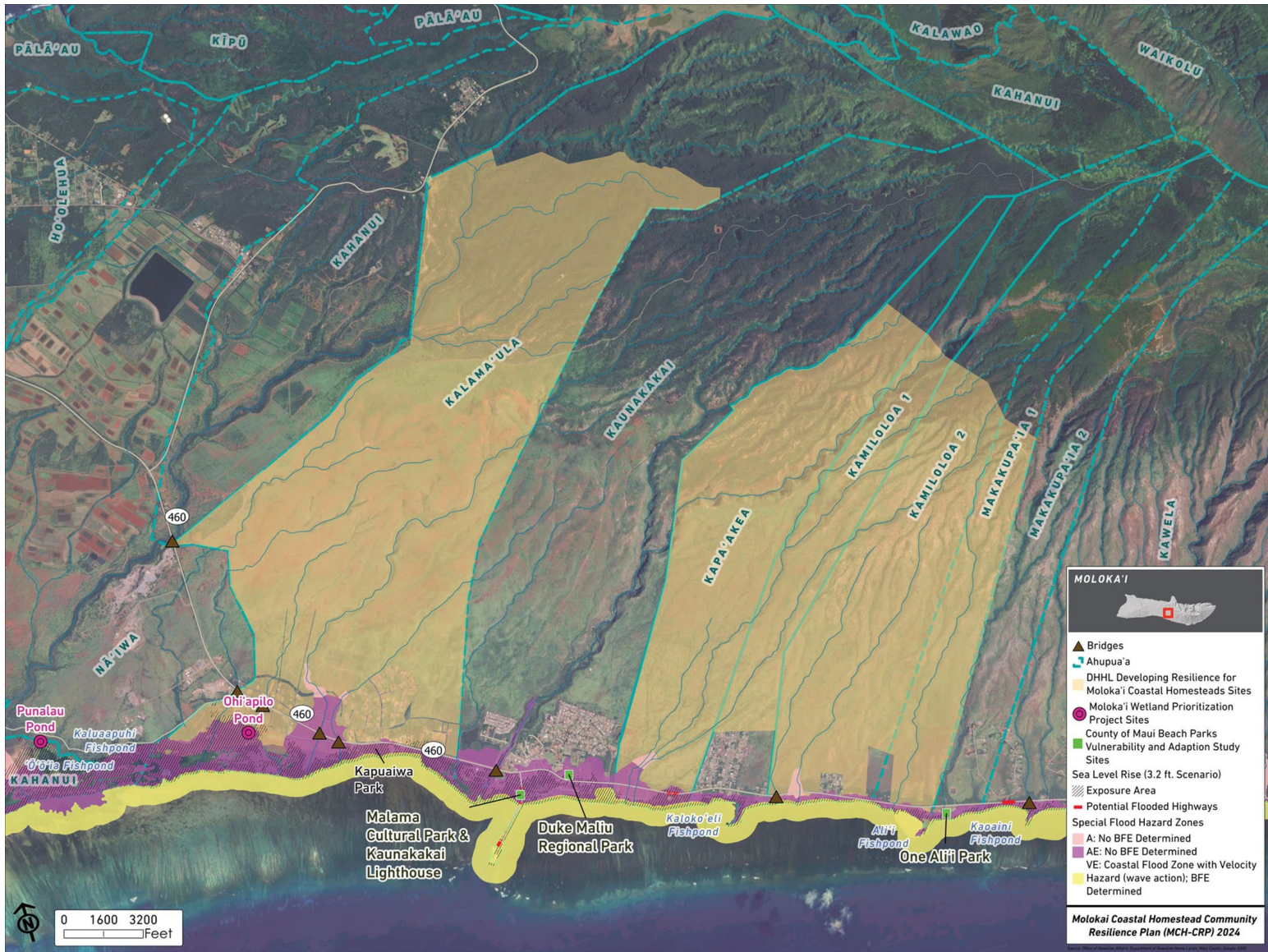
- ❖ This project is funded through the National Fish and Wildlife Foundation (NFWF) National Coastal Resilience Fund (NCRF).
- ❖ This stage funds a Resiliency Plan with nature-based solutions that provide Community Resilience and Fish and Wildlife benefits.
- ❖ On completion of the MCH-CRP Plan, DHHL could apply for more funding for future phases





Planning Process

- ❖ Build on prior efforts like the 2022 South Moloka'i Shoreline Erosion Management Plan and the 2015 Coastal Resilience for DHHL Communities Practicum Report
- ❖ Technical analysis of homestead assets, hazards, and vulnerabilities
- ❖ Multiple meetings and workshops held with beneficiaries to discuss issues and explore mitigation options
- ❖ Consultation with technical experts
- ❖ Huaka'i with beneficiaries
- ❖ Five Priority Projects identified per Homestead to build resilience





Technical Analysis

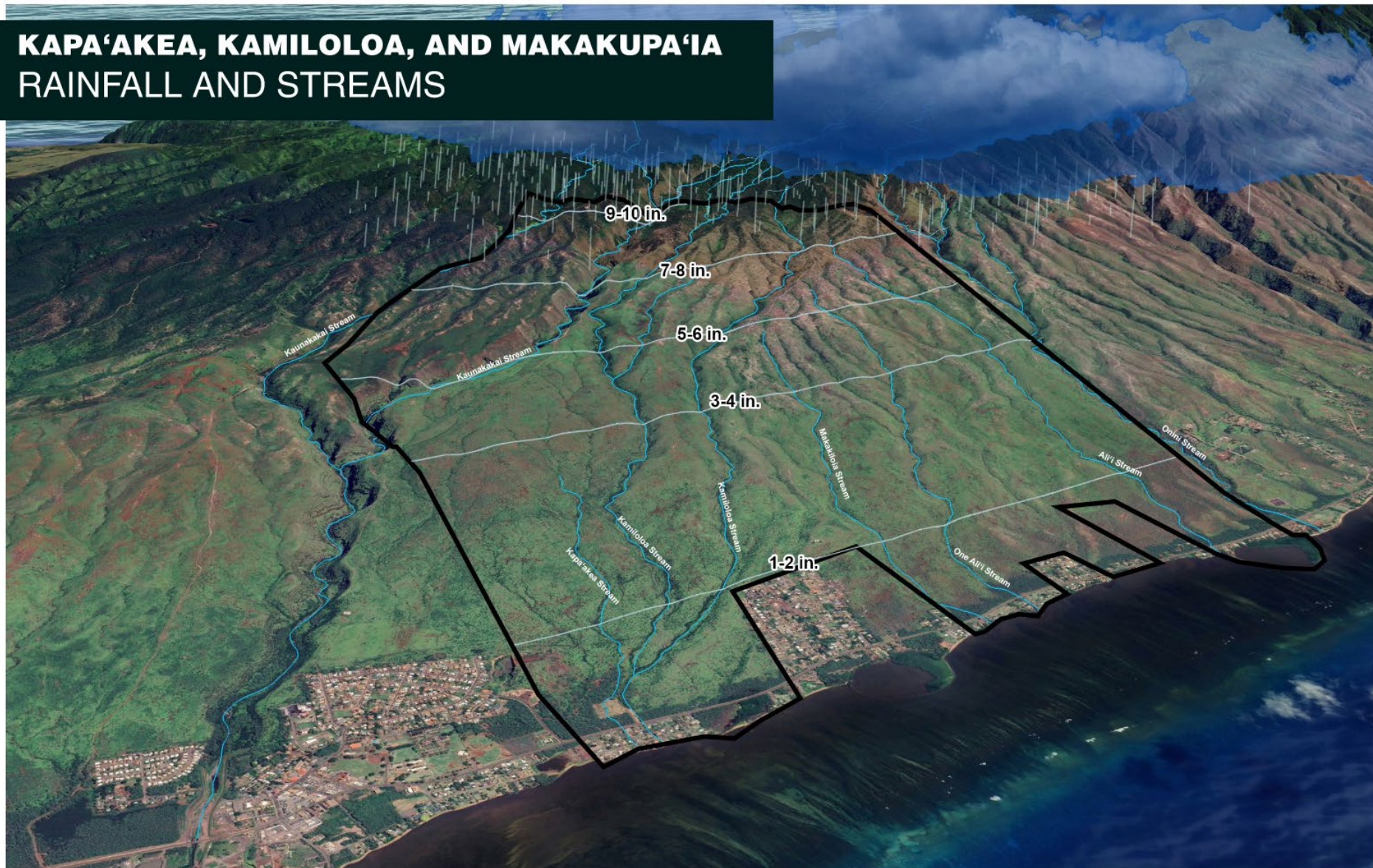
KALAMAU RAINFALL AND STREAMS





Technical Analysis

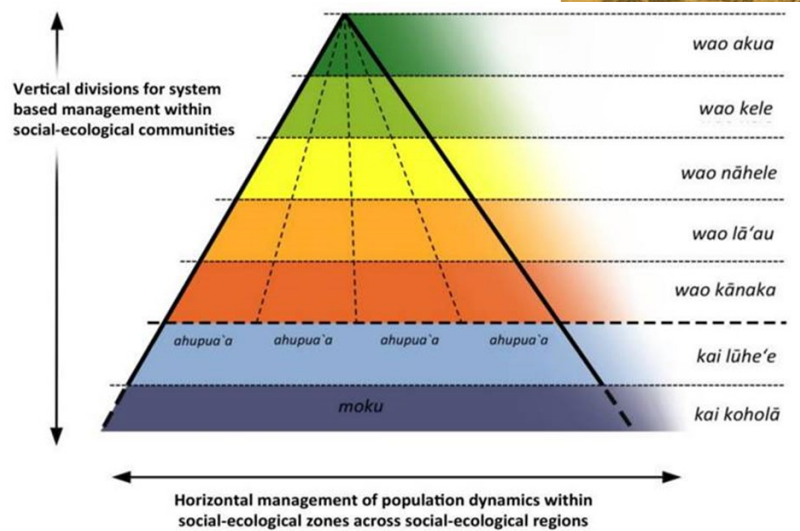
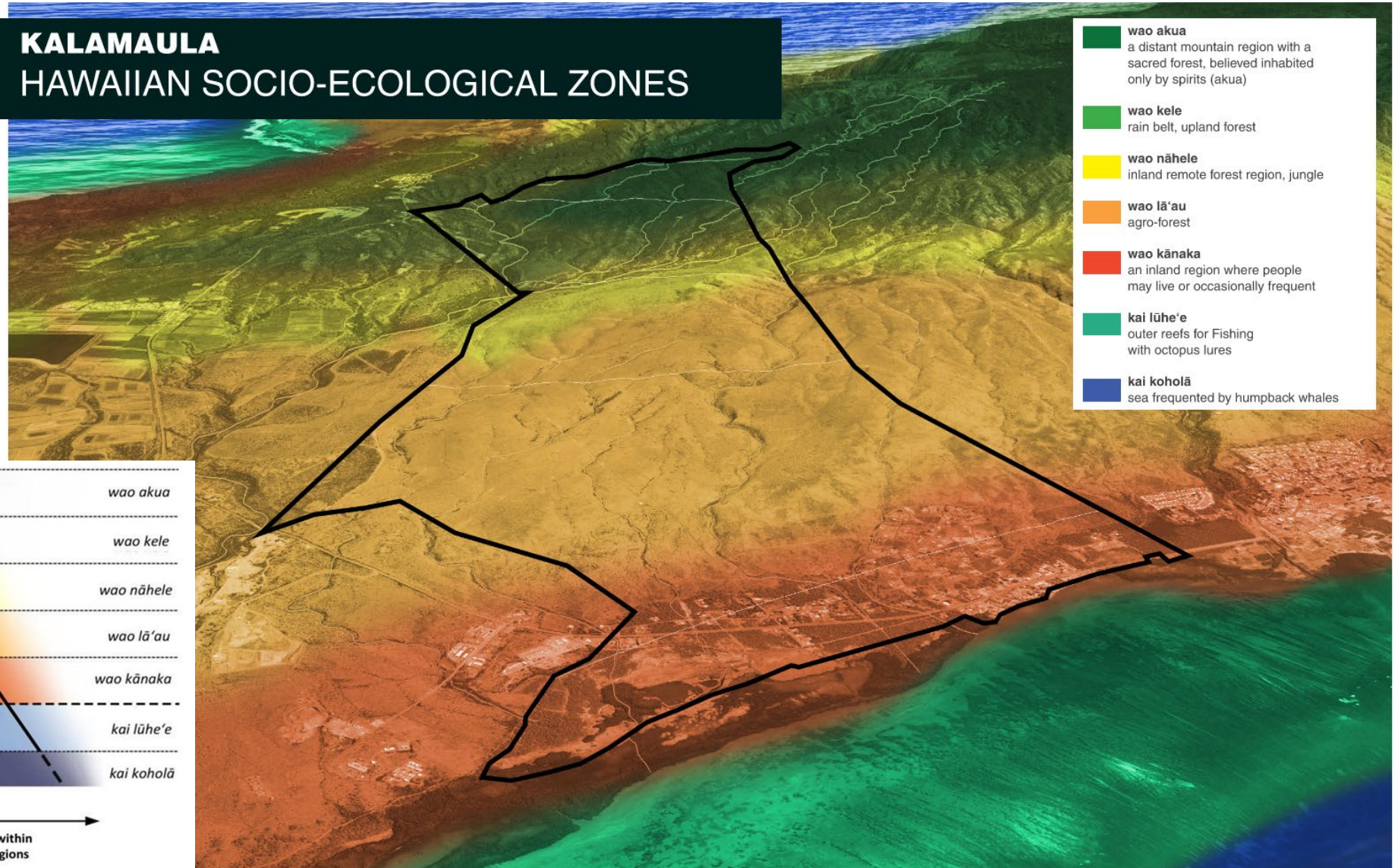
KAPA'AKEA, KAMILOLOA, AND MAKAKUPA'IA RAINFALL AND STREAMS





Incorporating TEK

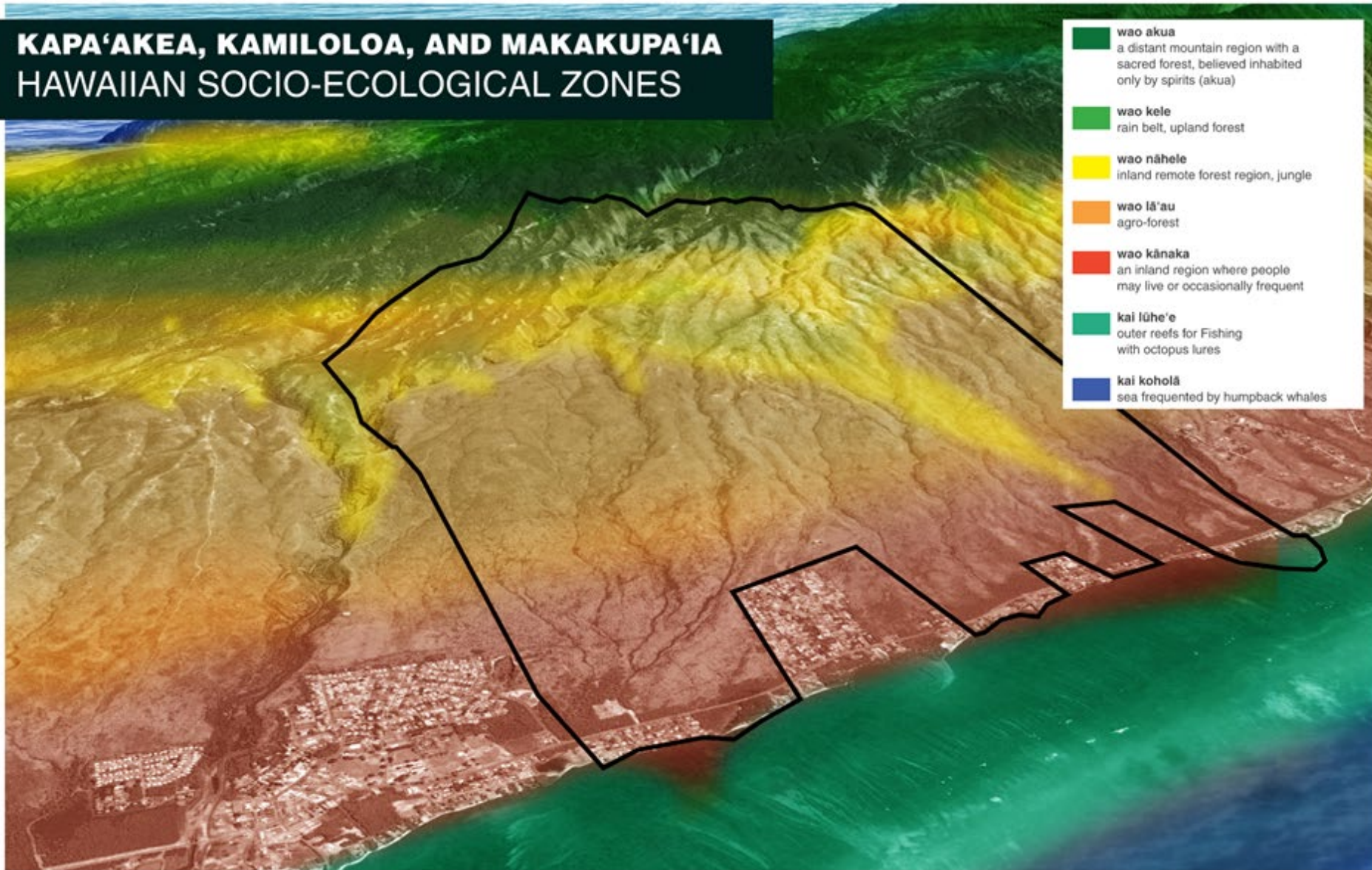
KALAMAULA HAWAIIAN SOCIO-ECOLOGICAL ZONES





Incorporating TEK

KAPA'AKEA, KAMILOLOA, AND MAKAKUPA'IA HAWAIIAN SOCIO-ECOLOGICAL ZONES





Outreach Summary

- 3.25.24 Initial meeting with Kalama'ula, Kapa'akea, and Kamiloloa One Ali'i Association presidents and representatives to introduce the MCH-CRP
- 4.22.24 DHHL HHC Meeting to Introduce MCH-CRP
- 4.25.24 1 on 1 interview/talk story session with Kapa'akea Oceanside resident
- 4.25.24 Planning Hui Meeting #1 (Planning Hui includes representatives from all three ahupua'a)
- 4.26.24 1 on 1 interview/talk story session with Kapa'akea Oceanside resident
- 5.08.24 Planning Hui Meeting #2
- 5.13.24 Beneficiary Meeting #1: Introduction to MCH-CRP**
- 6.12.24 Kapa'akea Homestead Assoc. Meeting
- 6.17.24 MCH-CRP Planning Hui Meeting #3
- 6.18.24 Kalama'ula Homestead Assoc. Meeting
- 6.20.24 Beneficiary Meeting #2: What are the problems & opportunities?**





Outreach Summary Cont.

- 7.20.24 Planning Hui Meeting #4
- 8.08.24 Kalama'ula & Kamiloloa Huaka'i
- 8.08.24 Beneficiary Meeting #3:**
Explore resilience building options
- 8.26.24 Large Landowners & ROE/Lease Meeting
- 8.27.24 Molokai DHHL Staff
- 9.26.24 Expert Technical Advisor Meeting
- 10.19.24 Kalama'ula & Kamiloloa Huaka'i
- 11.13.24 Expert Meeting with DOT
- 12.02.24 Expert Meeting (Debra Kelly NRCS)
- 12.05.24 'Ohi'apilo Wetland Huaka'i with Beneficiaries
- 12.11.24 Expert Meeting (TNC)
- 12.18.24 Expert Meeting (DLNR Lance DeSilva)
- 01.14.25 Attend/Present at Kalama'ula Homestead
Association Meeting
- 02.14.25 Huaka'i Mauka & Makai Kalama'ula
- 04.08.25 Kapa'akea & Kamiloloa Beneficiary Meeting #4**
- 04.16.25 Kalama'ula Beneficiary Meeting #4**
- 04.21.25 Hawaiian Homes Commission Meeting on Moloka'i





Huaka'i





Huaka'i





Huaka'i

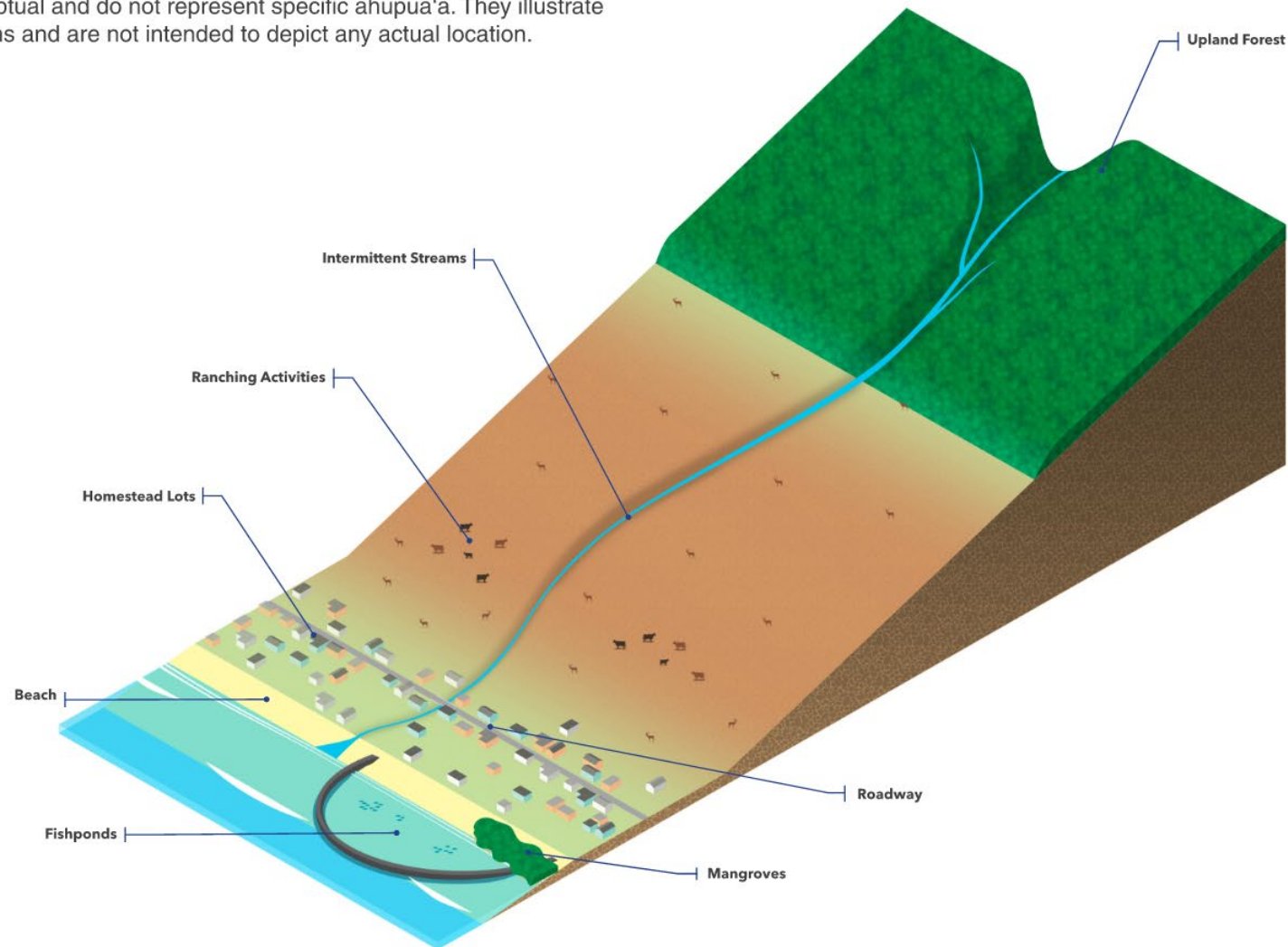




Conceptual Renderings

EXISTING CONDITIONS

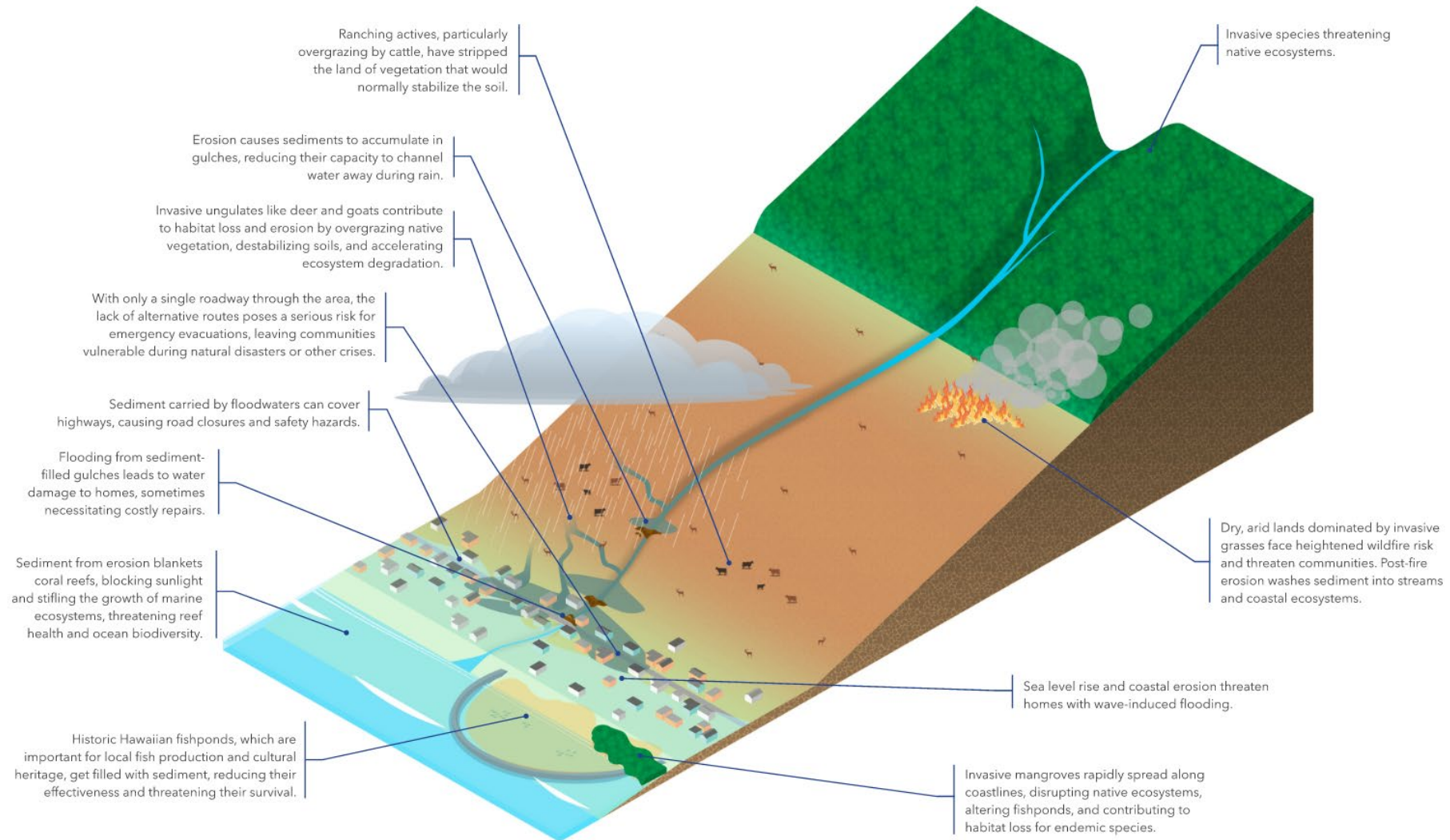
All figures are conceptual and do not represent specific ahupua'a. They illustrate generalized conditions and are not intended to depict any actual location.





Conceptual Renderings

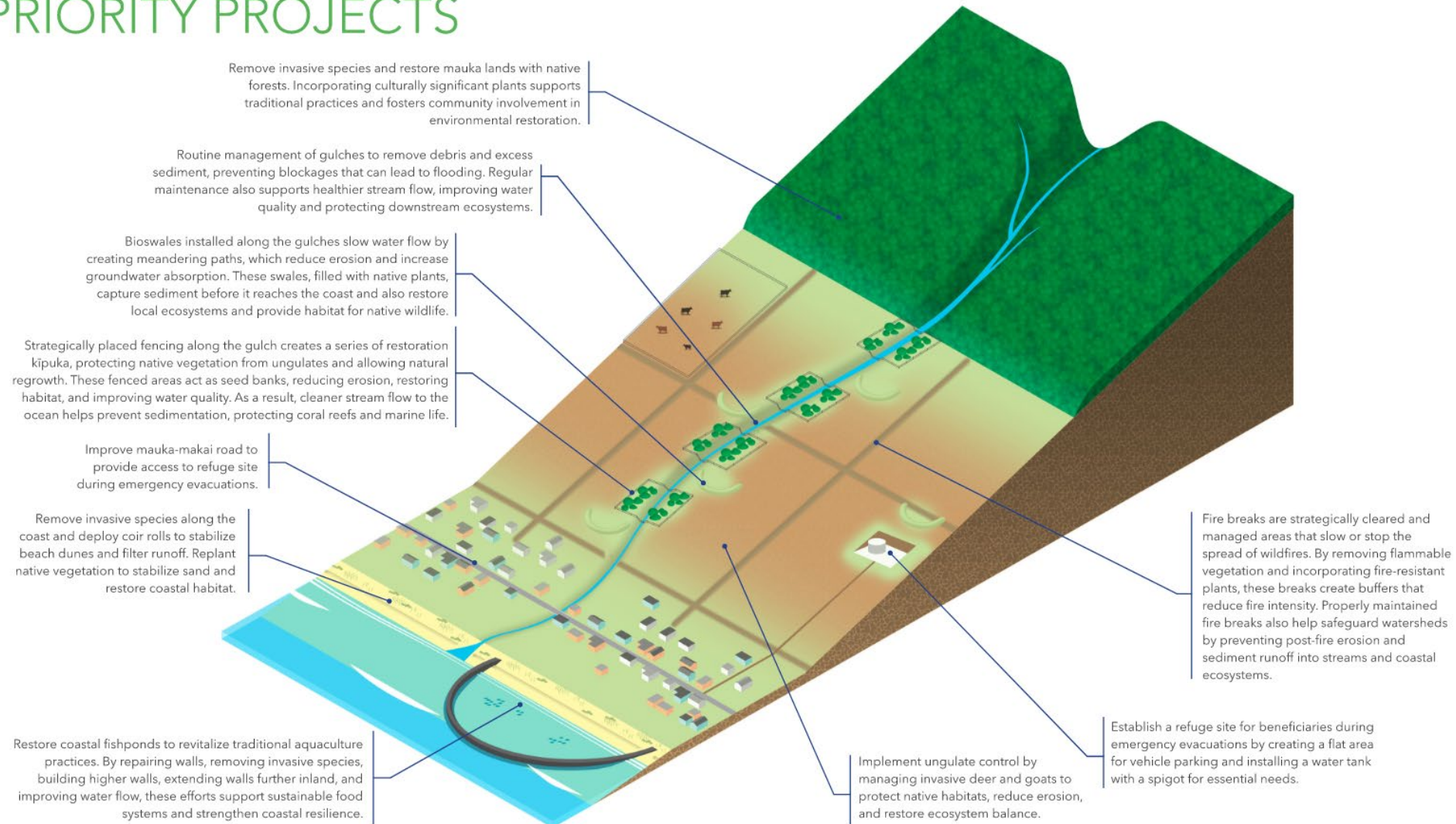
CHALLENGES





Conceptual - Priority Projects

EXAMPLES OF POTENTIAL PRIORITY PROJECTS





Next Steps

- ❖ Incorporate Workshop #4 feedback and produce Draft MCH-CRP (May/June)
- ❖ Beneficiary Review of Draft and 30-day comment period (Summer 2025)
 - In Person – Workshops Round #5
 - Online
 - Hard Copies at District Office
- ❖ Produce Final MCH-CRP (Summer 2025)
- ❖ Seek HHC Approval of Final MCH-CRP (Summer 2025)





Mahalo

