



HAWAIIAN HOME LANDS

HAWAIIAN HOMES COMMISSION • DEPARTMENT OF HAWAIIAN HOME LANDS

G-2

**Molokaʻi Coastal Homestead
Community Resilience Plan
HHC Review Draft**

November 17, 2025



Community Resilience Plan

- ❖ This project is funded through the National Fish and Wildlife Foundation (NFWF) National Coastal Resilience Fund (NCRF).
- ❖ This stage funds a Resiliency Plan with nature-based solutions that provide Community Resilience and Fish and Wildlife benefits.
- ❖ On completion of the MCH-CRP Plan, DHHL could apply for more funding for future phases





Relationship to DHHL Planning System

- **DHHL General Plan (2022)**
- **DHHL Moloka‘i Regional Plan (2020) – update soon**
- **Malama Cultural Park Special Area Plan (2022)**
- **South Molokai Shoreline Erosion Management Plan (2022)**
- **DHHL Moloka‘i Island Plan Update (2026 – 2027)**
- **DHHL Disaster & Climate Risk Reduction Plan (2026 – 2027)**



Planning Process

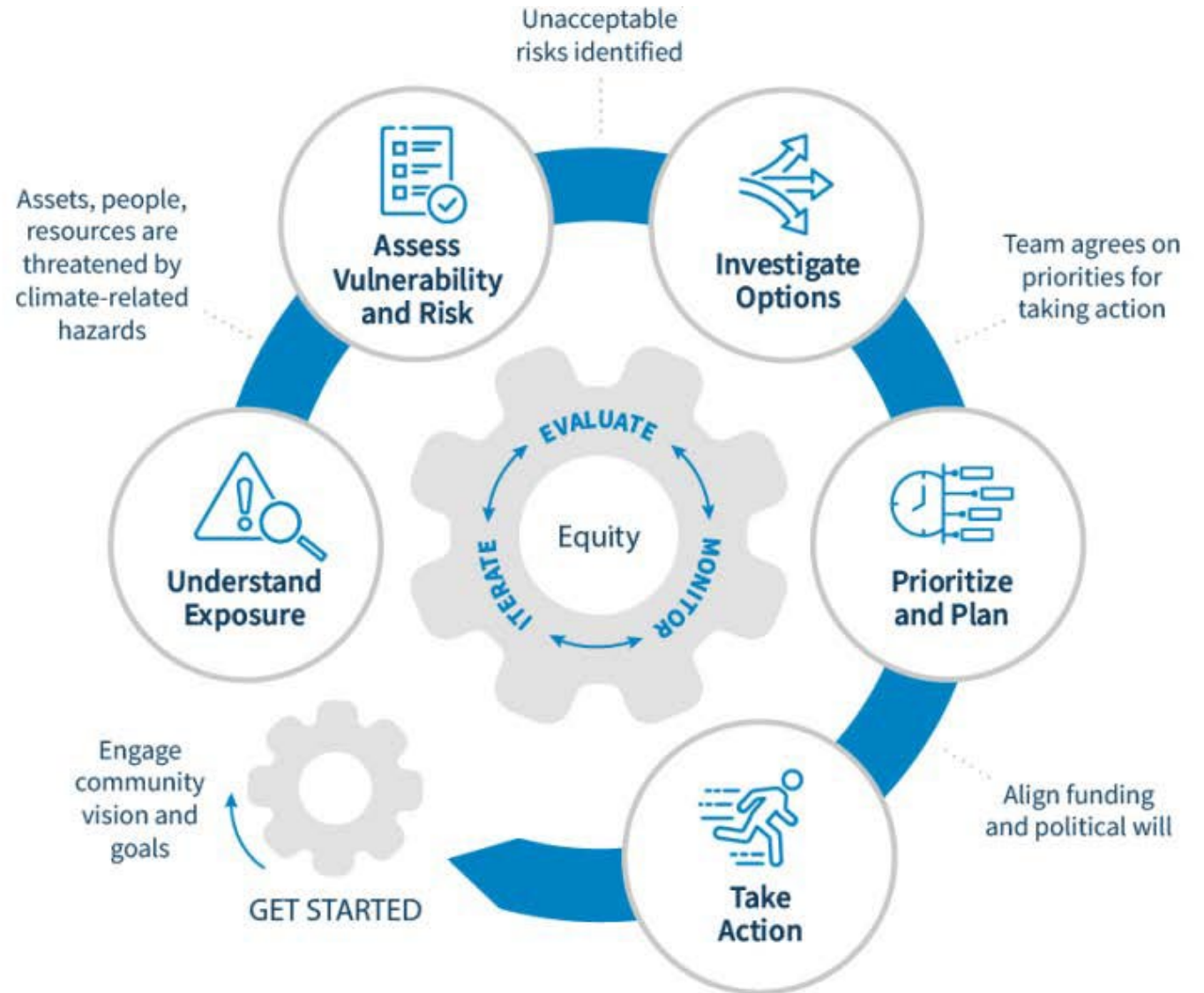
- ❖ Lessees were requesting assistance in dealing with coastal erosion & flooding
- ❖ Building on prior efforts like 2022 South Moloka'i Shoreline Erosion Management Plan & 2015 Coastal Resilience for DHHL Communities Practicum Report
- ❖ Technical analysis of homestead assets, hazards, & vulnerabilities
- ❖ Multiple meetings & workshops held with beneficiaries to discuss issues & explore mitigation options
- ❖ Consultation with technical experts
- ❖ Huaka'i with beneficiaries
- ❖ Five Resilience Goals identified to build resilience (37 total strategies)



Resilience Planning Framework

Grounding technical data with deep, generational knowledge of place, culture & history, through the MCH-CRP planning process beneficiaries have:

1. Identified assets -- natural, cultural, social, & infrastructural resources that strengthen the community
2. Identified hazards -- environmental & climate-related threats facing homesteads
3. Assessed vulnerabilities -- understanding where people, places, & systems are most at risk
4. Determined risks — prioritizing which issues require the most urgent attention.





What Does Resilience Mean to You?

RESILIENCE

the capacity to withstand or to recover quickly from difficulties; toughness.

SURVIVAL Kūpa'a
ADAPT GRIT RESILIENCE
HO'OMAU HOLU PREVENTION
GO GETTUM

***Holu:** Springy, pliable, resilient, as a mattress; to sway, as palm fronds; to ripple, as waves; to play back and forth; bumpy, as an airplane ride.*

***Ho'omau:** Always, steady, constant, ever, unceasing, permanent, stationary, continual, perpetual; to continue, persevere, preserve, endure, last; preservation, continuation.*

***Kūpa'a:** Steadfast, firm, constant, immovable; loyal, faithful; determined; loyalty, allegiance, firmness.*



Technical Analysis

KALAMAU RAINFALL AND STREAMS





Technical Analysis

KAPA'AKEA, KAMILOLOA, AND MAKAKUPA'IA RAINFALL AND STREAMS

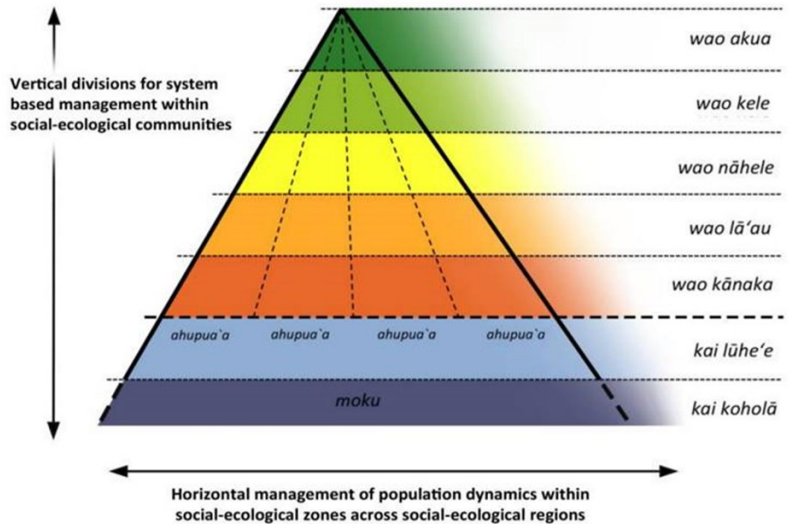
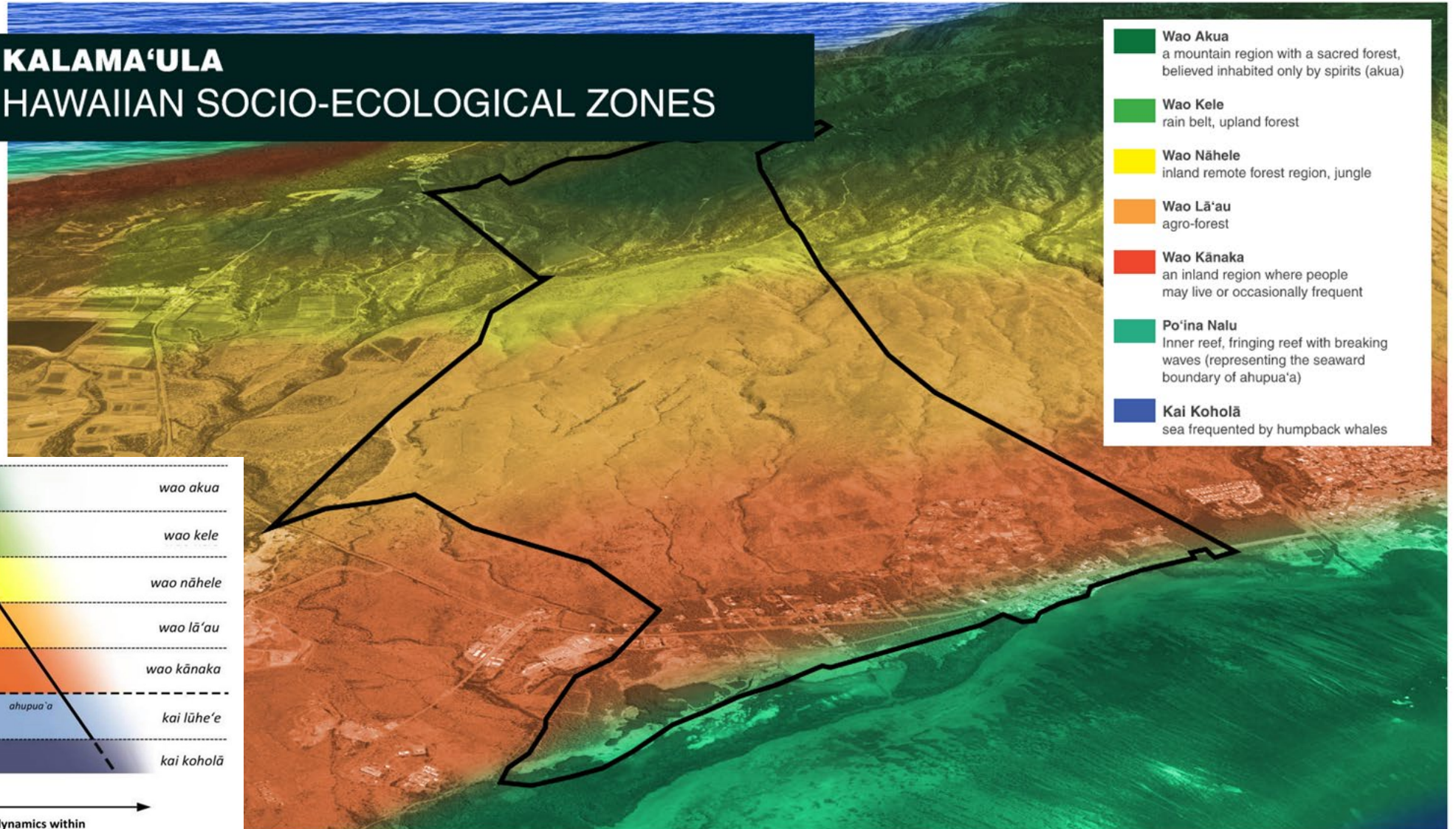




Incorporating TEK

KALAMA'ULA

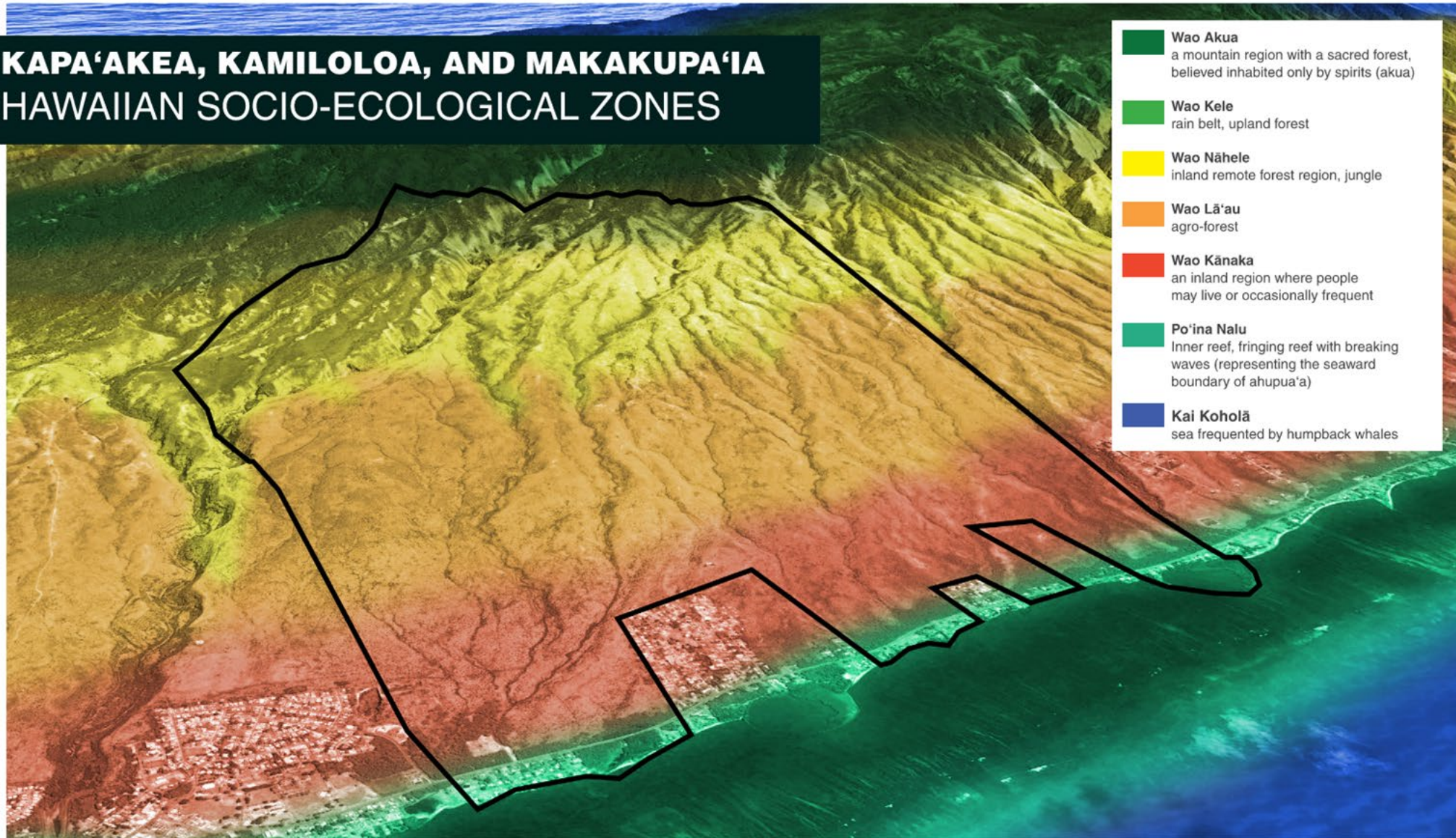
HAWAIIAN SOCIO-ECOLOGICAL ZONES





Incorporating TEK

KAPA'AKEA, KAMILOLOA, AND MAKAKUPA'IA HAWAIIAN SOCIO-ECOLOGICAL ZONES





Outreach Summary

- 3.25.24 Initial meeting with Kalama'ula, Kapa'akea, and Kamiloloa One Ali'i Association presidents and representatives to introduce the MCH-CRP
- 4.22.24 DHHL HHC Meeting to Introduce MCH-CRP
- 4.25.24 1 on 1 interview/talk story session with Kapa'akea Oceanside resident
- 4.25.24 Planning Hui Meeting #1 (Planning Hui includes representatives from all three ahupua'a)
- 4.26.24 1 on 1 interview/talk story sessions with Kapa'akea shoreline residents
- 5.08.24 Planning Hui Meeting #2
- 5.13.24 **Beneficiary Meeting #1: Introduction to MCH-CRP**
- 6.12.24 Kapa'akea Homestead Assoc. Meeting
- 6.17.24 MCH-CRP Planning Hui Meeting #3
- 6.18.24 Kalama'ula Homestead Assoc. Meeting
- 6.20.24 **Beneficiary Meeting #2: What are the problems & opportunities?**





Outreach Summary Cont.

- 7.20.24 Planning Hui Meeting #4
- 8.08.24 Kalama'ula & Kamiloloa Huaka'i
- 8.08.24 Beneficiary Meeting #3:**
Explore resilience building options
- 8.26.24 Large Landowners & ROE/Lease Meeting
- 8.27.24 Molokai DHHL Staff
- 9.26.24 Expert Technical Advisor Meeting
- 10.19.24 Kalama'ula & Kamiloloa Huaka'i
- 11.13.24 Expert Meeting with DOT
- 12.02.24 Expert Meeting (Debra Kelly NRCS)
- 12.05.24 'Ohi'apilo Wetland Huaka'i with Beneficiaries
- 12.11.24 Expert Meeting (TNC)
- 12.18.24 Expert Meeting (DLNR Lance DeSilva)
- 01.14.25 Attend/Present at Kalama'ula Homestead Association Meeting
- 02.14.25 Huaka'i Mauka & Makai Kalama'ula
- 04.08.25 Kapa'akea & Kamiloloa Beneficiary Meeting #4**
- 04.16.25 Kalama'ula Beneficiary Meeting #4**
- 04.21.25 Hawaiian Homes Commission Meeting on Moloka'i





Huaka'i





Huaka'i





Huaka'i

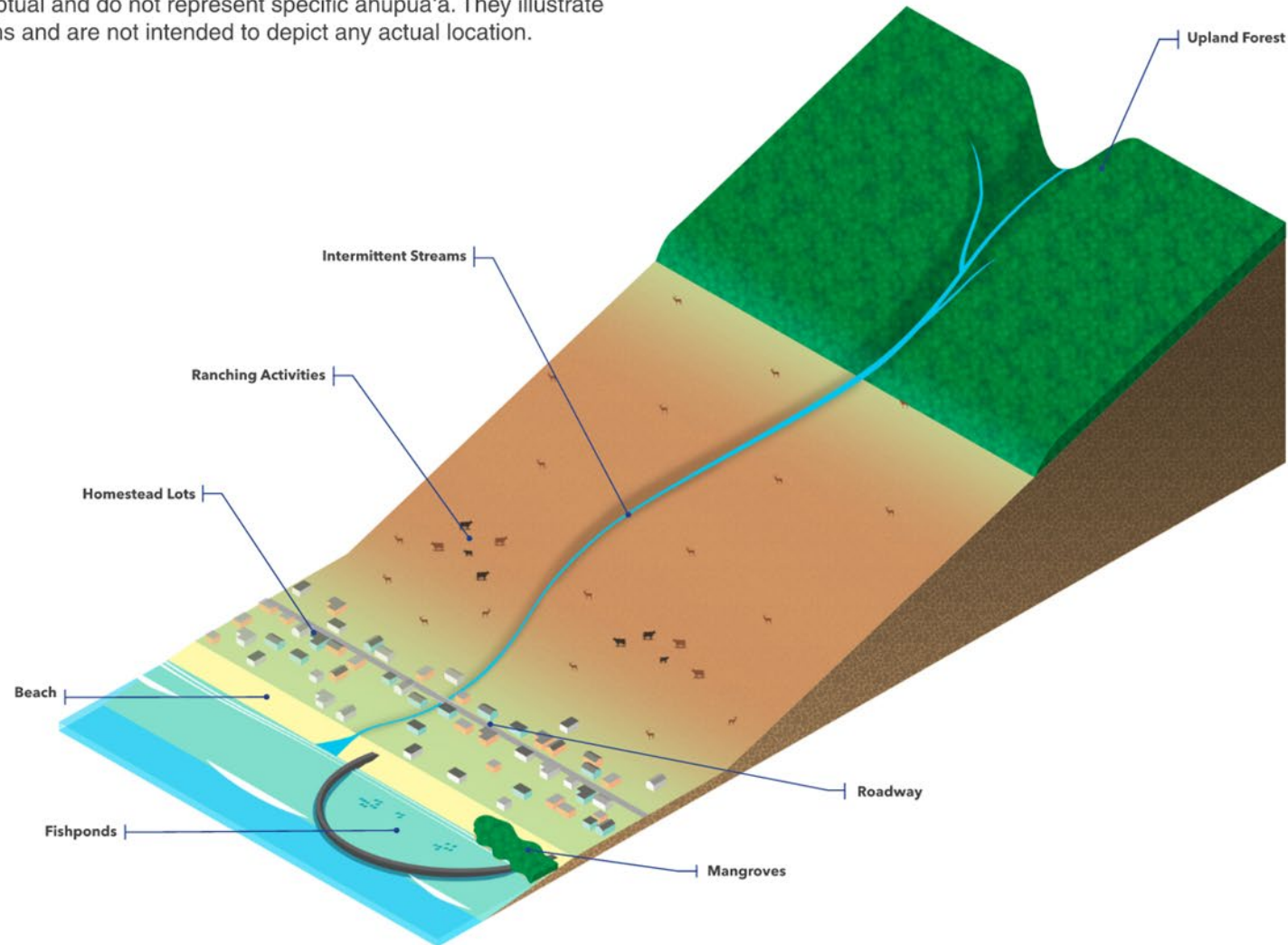




Conceptual Renderings

EXISTING CONDITIONS

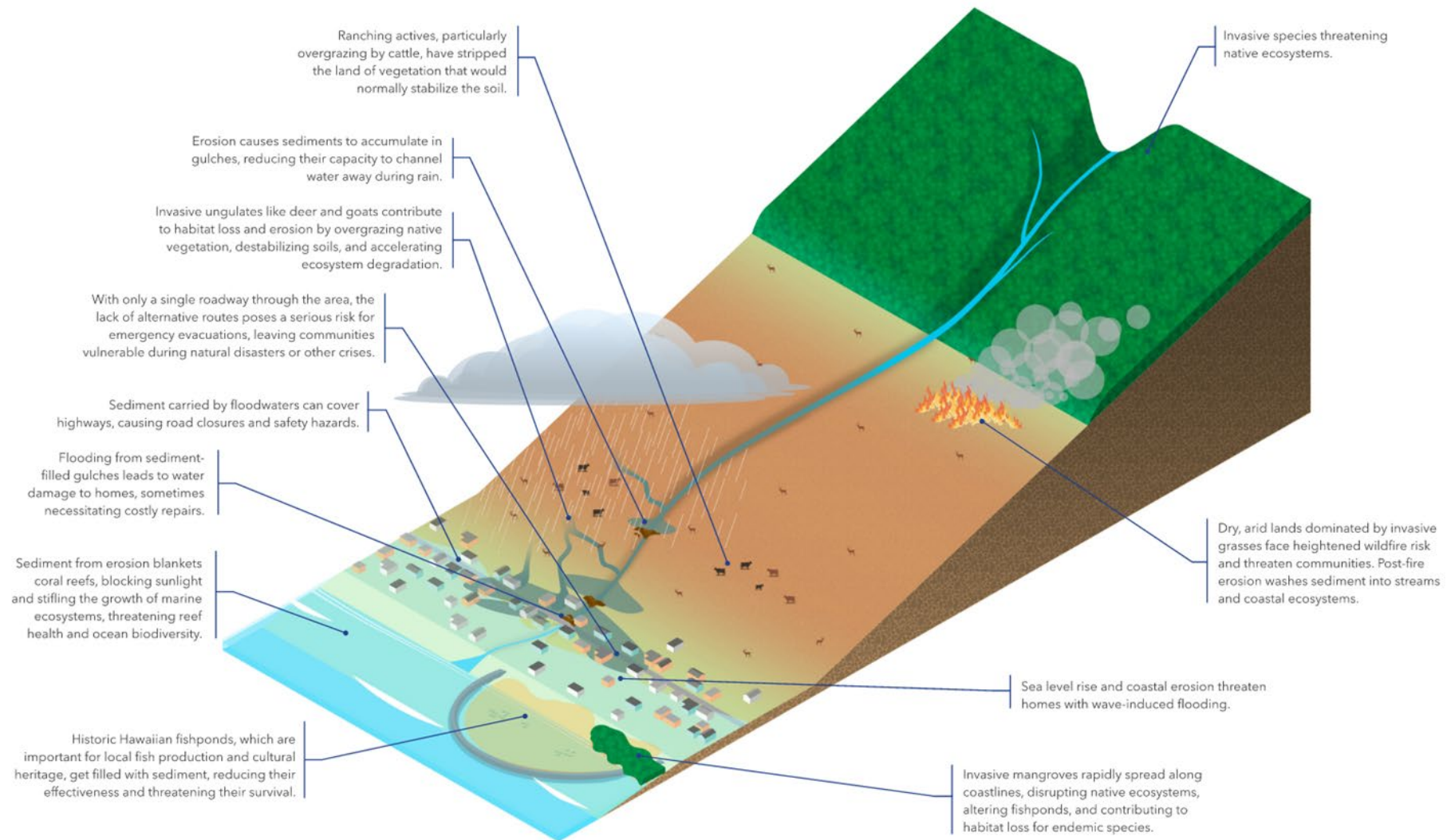
All figures are conceptual and do not represent specific ahupua'a. They illustrate generalized conditions and are not intended to depict any actual location.





Conceptual Renderings

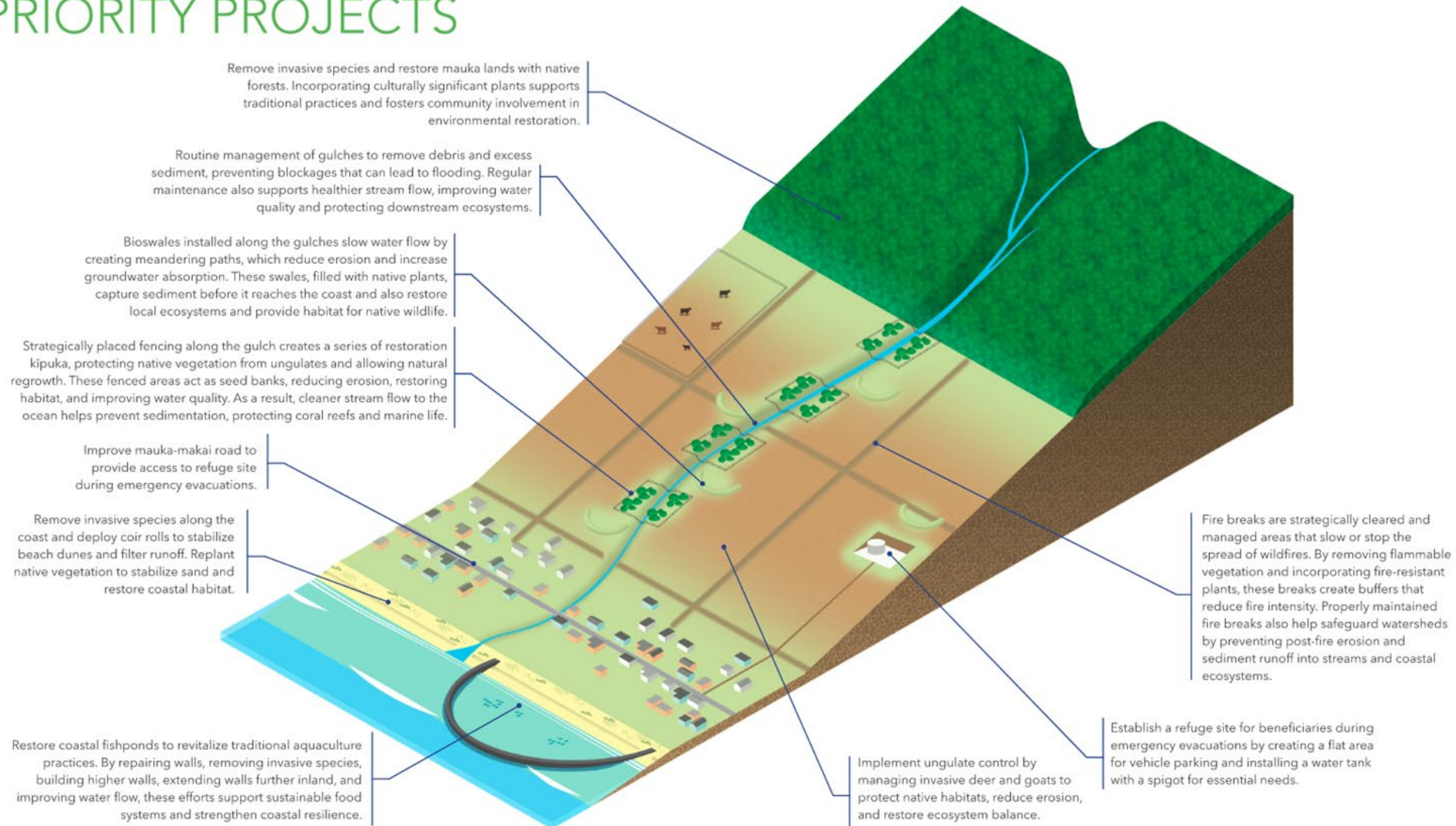
CHALLENGES





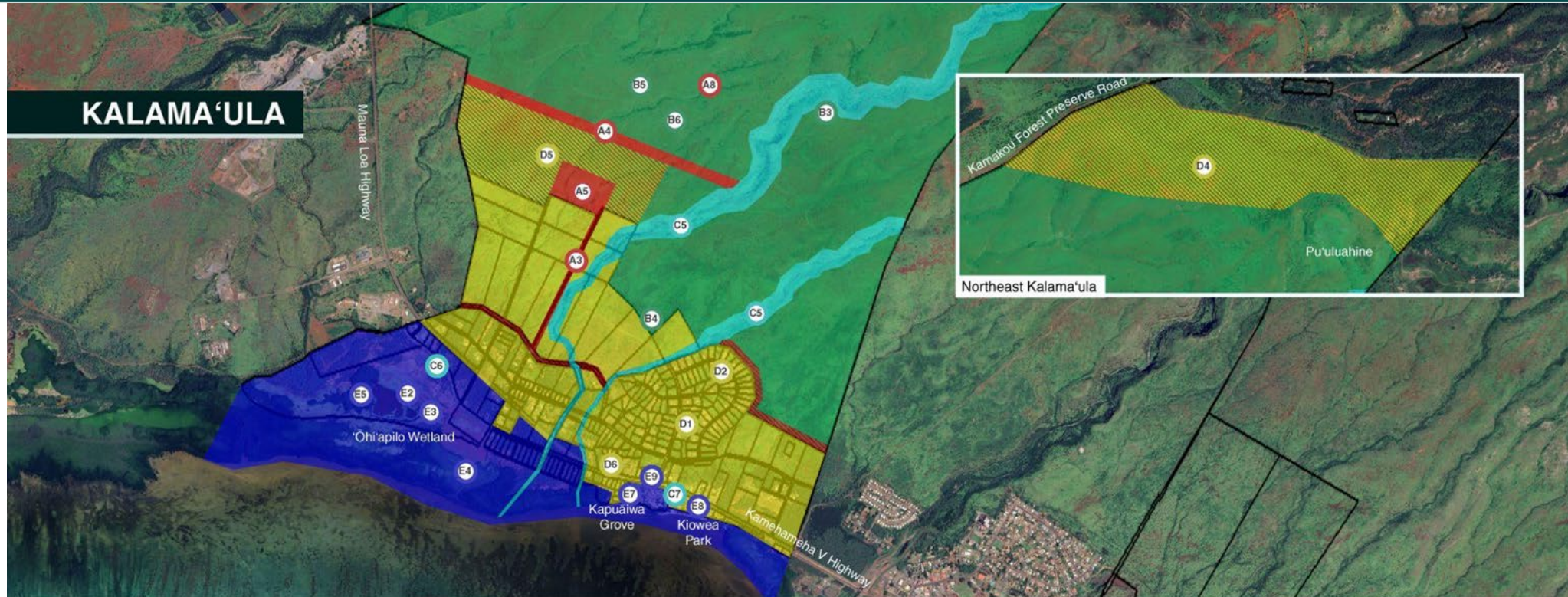
Conceptual - Priority Projects

EXAMPLES OF POTENTIAL PRIORITY PROJECTS





Priority Project Area Maps



A Emergency Evacuation and Public Safety

- A1 Pre-Disaster Emergency Response and Evacuation Plan*
- A2 Update DHHHL Plans on Moloka'i
- A3 Emergency Evacuation Routes
- A4 Fire Break Construction
- A5 Evacuation Sites
- A6 Event Reporting and Documentation System
- A7 Water Delivery Technical and Feasibility Study*
- A8 Wildfire Detection Cameras

B Mauka Restoration

- B1 Mauka Restoration and Maintenance Plan*
- B2 Archaeological Inventory Survey*
- B3 Kipuka Waihona Concept
- B4 Expand Plant and Food Nursery
- B5 Reduce Fuel Loads
- B6 Feral Animal Management Program

C Waterways and Drainage

- C1 Historical Hydrological Study*
- C2 Drainage Master Plan*
- C3 MOU for Drainageway Maintenance and Improvements*
- C4 Drainage Maintenance Training and Participatory Mapping Workshop*
- C5 Conduct Routine Maintenance of Water and Drainageways
- C6 Restore Springs
- C7 Study of Kulana Ōiwi Flooding

D Residential Hale Retrofits and Relocation

- D1 Adapt Structures and Systems
- D2 Maintain Home Ignition Zones
- D3 Vulnerability Assessments Survey*
- D4 Residential Restoration and Relocation Plan
- D5 Develop Kalamā'ula Mauka Ag Lots
- D6 Convert Cesspools

E Makai Restoration

- E1 Makai Restoration & Management Plan*
- E2 Nature-Based Coastal Protection Projects
- E3 Manage Invasive Species
- E4 Marine Ecosystem Restoration
- E5 Restore Ōhi'apilo Wetland
- E6 Implement Special Area Plan for Malama Cultural Park**
- E7 Protect Kapuāiwa Coconut Grove
- E8 Maintenance for Kiowea Park
- E9 Maintenance for Kalaniana'ōle Hall
- E10 Evaluate Impacts of Kaunakakai



Priority Project Area Maps



A Emergency Evacuation and Public Safety

- A1 Pre-Disaster Emergency Response and Evacuation Plan*
- A2 Update DHHIL Plans on Molokai
- A3 Emergency Evacuation Routes
- A4 Fire Break Construction
- A5 Evacuation Sites
- A6 Event Reporting and Documentation System
- A7 Water Delivery Technical and Feasibility Study*
- A8 Wildfire Detection Cameras

B Mauka Restoration

- B1 Mauka Restoration and Maintenance Plan*
- B2 Archaeological Inventory Survey*
- B3 Kipuka Waihona Concept
- B4 Expand Plant and Food Nursery
- B5 Reduce Fuel Loads
- B6 Feral Animal Management Program

C Waterways and Drainage

- C1 Historical Hydrological Study*
- C2 Drainage Master Plan*
- C3 MOU for Drainageway Maintenance and Improvements*
- C4 Drainage Maintenance Training and Participatory Mapping Workshop*
- C5 Conduct Routine Maintenance of Water and Drainageways
- C6 Restore Springs
- C7 Study of Kulana Ōiwi Flooding

D Residential Hale Retrofits and Relocation

- D1 Adapt Structures and Systems
- D2 Maintain Home Ignition Zones
- D3 Vulnerability Assessments Survey*
- D4 Residential Restoration and Relocation Plan
- D5 Develop Kalamaula Mauka Ag Lots
- D6 Convert Cesspools

E Makai Restoration

- E1 Makai Restoration & Management Plan*
- E2 Nature-Based Coastal Protection Projects
- E3 Manage Invasive Species
- E4 Marine Ecosystem Restoration
- E5 Restore Ōhi'apilo Wetland
- E6 Implement Special Area Plan for Malama Cultural Park
- E7 Protect Kapuāiwa Coconut Grove
- E8 Maintenance for Kiwea Park
- E9 Maintenance for Kalaniana'ole Hall
- E10 Evaluate Impacts of Kaunakakai Wharf



Priority Project Area Maps



A Emergency Evacuation and Public Safety

- A1 Pre-Disaster Emergency Response and Evacuation Plan*
- A2 Update DHHIL Plans on Moloka'i
- A3 Emergency Evacuation Routes
- A4 Fire Break Construction
- A5 Evacuation Sites
- A6 Event Reporting and Documentation System
- A7 Water Delivery Technical and Feasibility Study*
- A8 Wildfire Detection Cameras

B Mauka Restoration

- B1 Mauka Restoration and Maintenance Plan*
- B2 Archaeological Inventory Survey*
- B3 Kipuka Waihona Concept
- B4 Expand Plant and Food Nursery
- B5 Reduce Fuel Loads
- B6 Feral Animal Management Program

C Waterways and Drainage

- C1 Historical Hydrological Study*
- C2 Drainage Master Plan*
- C3 MOU for Drainageway Maintenance and Improvements*
- C4 Drainage Maintenance Training and Participatory Mapping Workshop*
- C5 Conduct Routine Maintenance of Water and Drainageways
- C6 Restore Springs
- C7 Study of Kulana Ōiwi Flooding

D Residential Hale Retrofits and Relocation

- D1 Adapt Structures and Systems
- D2 Maintain Home Ignition Zones
- D3 Vulnerability Assessments Survey*
- D4 Residential Restoration and Relocation Plan
- D5 Develop Kalamaula Mauka Ag Lots
- D6 Convert Cesspools

E Makai Restoration

- E1 Makai Restoration & Management Plan*
- E2 Nature-Based Coastal Protection Projects
- E3 Manage Invasive Species
- E4 Marine Ecosystem Restoration
- E5 Restore Ōhi'apilo Wetland
- E6 Implement Special Area Plan for Malama Cultural Park
- E7 Protect Kapuāiwa Coconut Grove
- E8 Maintenance for Kiowea Park
- E9 Maintenance for Kalaniana'ole Hall
- E10 Evaluate Impacts of Kaunakakai Wharf

Development of Project Matrix

#	Mitigation Strategies	Primary Responsible Entity/ies	Secondary Responsible Entity/ies	Timeline	Funding possibilities/Co-benefits (*)/Costing	Funding Main Applicant	Details	Workforce Development	Cost Estimates
B3	Implement Kipuka Waihona Concept	- HHAs	- DHHL	Mid-Term	- NFWF - HCF	HHAs	<p>The Kīpuka Waihona Concept combines Hawaiian ecological knowledge with practical land management. The word kīpuka refers to an “island” of life that remains within a lava flow. In this plan, it symbolizes small, fenced “islands of renewal” established along eroded ravines to restore native ecosystems, reduce erosion, and build long-term resilience.</p> <p>Key Components:</p> <ul style="list-style-type: none"> - Construct small, fenced kīpuka restoration nodes at strategic mauka locations rather than fencing entire ravines. - Replant each site with native dryland and riparian species to stabilize soils, slow runoff, and restore forest structure. - Integrate vegetated swales and small reservoirs to slow and capture stormwater, recharge soil moisture, and support reforestation. - Test and cultivate native, drought-tolerant, and animal-resistant species that can withstand Moloka’i’s dry conditions and ungulate pressure. - Remove kiawe and other invasive plants and replace them with resilient native vegetation. - Use each kīpuka as a seed source, wildlife refuge, and outdoor learning site for stewardship and education. - Create a network of restored sites that can be expand over time as funding becomes available. - Employ homesteaders in restoration work to build community capacity and local economic opportunity. 	Yes	\$1,500,000



Next Steps

- ❖ **Produce Draft MCH-CRP (Winter 2025)**
- ❖ **Beneficiary Review of Draft and 30-day comment period (January 2025)**
 - **In Person – Workshops Round #5**
 - **Online**
 - **Hard Copies at District Office**
- ❖ **Revise Draft based on beneficiary feedback and seek HHC Approval of Final MCH-CRP (February 2026)**
- ❖ **Seek funding for implementation in 2026 (NFWF? Act 96?)**





Mahalo

