

MOLOKAI COASTAL HOMESTEAD COMMUNITY RESILIENCE PLAN

Sust'āinable Molokai
G70
State of Hawai'i - DHHL

Beneficiary Meeting #3
Aug. 8, 2024
Options & Priorities





Na'ike's

ULU CORN CHOWDER



coconut milk, ulu, uala, kalo, potatoes, corn, carrots, celery, garlic, onion,
fresh herbs: fennel, rosemary, thyme, sage, hawaiian salt and pepper
Served with Kanemistu Super Mini bread, butter & Enjoy Cookie



AGENDA: 5:30pm–8:00pm

5:30 pm	Pule, Sign in, Grab dinner (5min)
5:35 pm	Quick Introduction (5min)
5:40 pm	Recap/What has been done & Maps (20min)
6:00pm	<i>Ahupua'a Groups:</i> Priority Projects Review-maps & Discuss top Projects(30min)
6:30pm	<i>Ahupua'a Groups:</i> Choose top 5 Priority Projects /Rank Rest (20min)
6:50pm	<i>Ahupua'a Groups:</i> Expert/Resource: What are the option? (60min)
7:50pm	Group Discussion-Ahupua'a's share Top 5 Priorities (15min)
8:00pm	Next Steps: Closing Pule (5 min)

FUNDING

This project is funded through the National Fish and Wildlife Foundation (NFWF) National Coastal Resilience Fund (NCRF).

This stage funds a...**Resiliency Plan with nature-based solutions that provide Community Resilience and Fish and Wildlife benefits.**

On completion of the MCH-CRP Plan, DHHL could apply for more funding for future phases, which is why identifying & exploring options and strategies for the Priority Projects are so important.



Phase 1
Community Capacity
Building & Planning

Phase 2
Site Assessment &
Preliminary Design

Phase 3
Final Design
& Permitting

Phase 4
Restoration
Implementation

OTHER ONGOING RELATED PLANS

DHHL Plans and Initiatives - Molokai

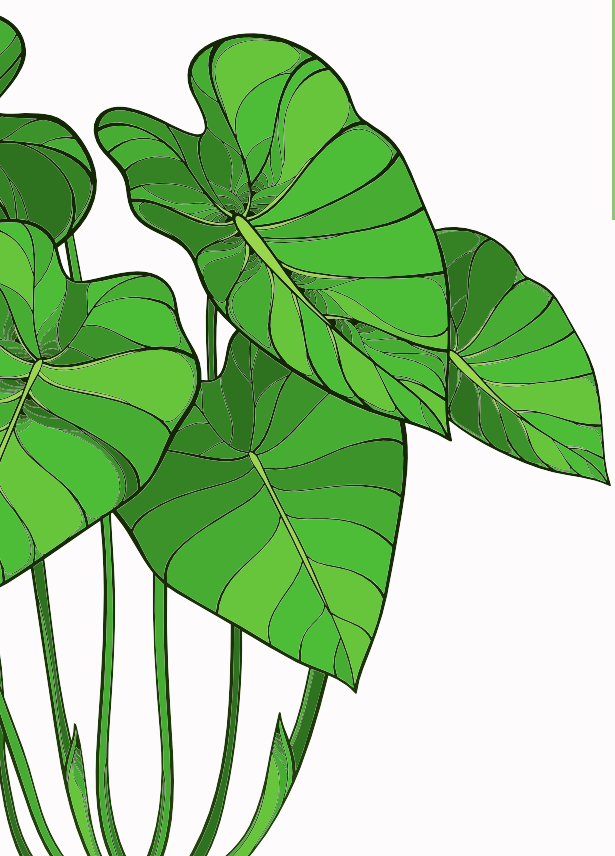
- (2005) Molokai Island Plan
- (2019) Molokai Regional Plan
- (2022) SM-SEMP
- (2023) Malama Cultural Park - Special Area Plan
- DHHL Cesspool Assessments
- DHHL South Molokai Drainage Study

Island-Specific Plans & Assessments

- Molokai Water Use Development Plan (currently being updated)
- Molokai Clean Energy Resiliency Action Plan
- Molokai Wetland Partnership:
- (2023) USGS: A Prioritization Plan for Coastal Wetland Restoration on Molokai & Wetland Restoration for a Resilient Community & Thriving Waterbirds in Molokaʻi

County of Maui Plans (for Reference Only)

- (2021) COM Wastewater Infrastructure Inundation Study-MKK: KWRF
- (2021) Beach Parks Vulnerability and Adaptation Study-MKK sites
- (2023) COM Climate Action & Resiliency Plan (CARP)
- (2024) Molokai Climate Change and Sea-Level Rise Adaptation and Resiliency Plan (CCSLAR)



OUR TEAM



Nancy
McPherson

DHHL
Climate Change
and Resilience
Project Planner



Barbara Natale
Cody Winchester
Kawika McKeague

G70
Primary Project
Consultant &
Plan Writer



Katy Mokuau
Heather Place

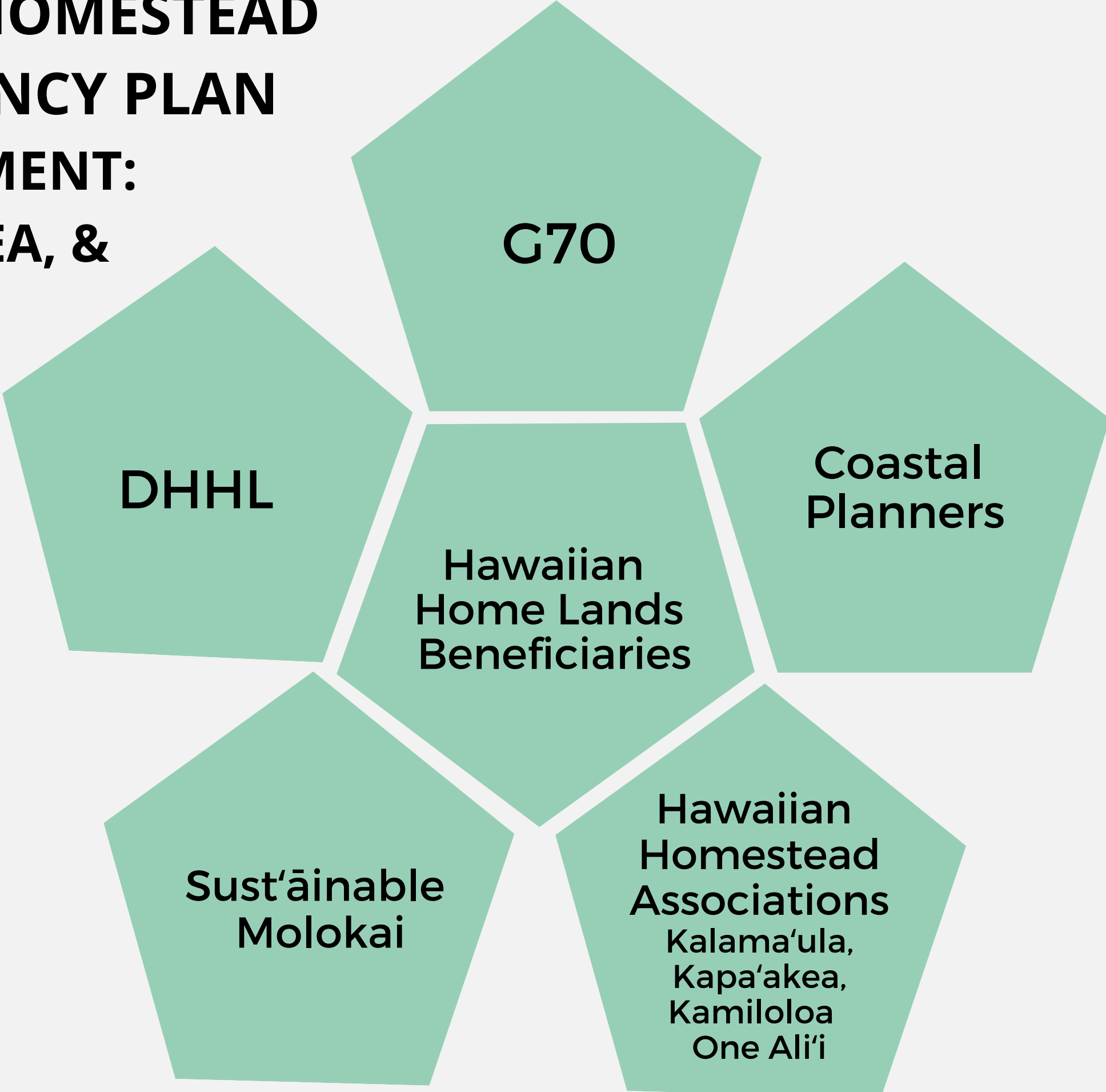
Community
Outreach
Consultant

Coastal Planners,
LLC

Thorne Abbott

Technical
Advisor

**MOLOKAI COASTAL HOMESTEAD
COMMUNITY RESILIENCY PLAN
BENEFICIARY ENGAGEMENT:
KALAMA'ULA, KAPA'AKEA, &
KAMILOLOA - ONE ALI'I**



WHAT IS THE MOLOKAI COASTAL HOMESTEAD COMMUNITY RESILIENCY PLAN?

This project will produce a Molokai Coastal Homestead
Community Resilience Plan for the DHHL Homestead
communities of Kalama'ula, Kapa'akea, & Kamiloloa-One Ali'i

WHAT AREA WILL THIS PLAN FOCUS ON?

From **MAUKA TO MAKAI!**

Ahupua'a of Kalama'ula, Kapa'akea,
Kamiloloa and Makakupa'ia (One Ali'i)





WHAT IS THE PROCESS OF THIS PLAN?

Multiple meetings & workshops will be held
with beneficiaries to go over different issues &
concerns and identify up to:
5 priority projects per Ahupua'a.





WHAT IS THE PROCESS OF THIS PLAN?

Beneficiary Consultation & Collaboration with:

Native Hawaiian key stakeholders on Hawaiian Homelands, in the process of:

- **Planning Hui Meetings:** with Ahupua'a Associations & Reps
- **Workshops:** **3** In-person Beneficiary Workshops
- **Small Group Interviews:** *Up to 6* with knowledgeable stakeholders, such as Kūpuna, 'ōpio, & cultural practitioners
- **Technical Meetings:** **4** with state, county, natural resources agencies, etc.
- **Huaka'i:** Each Ahupua'a: tbd for Mauka & Makai locations

WHAT HAS BEEN DONE

- 3.25.24 Initial meeting with Kalama'ula, Kapa'akea, and Kamiloloa One Ali'i Hawaiian Homes Association presidents and representatives to introduce the MCH-CRP plan, by DHHL & SM
- 4.22.24 DHHL Hawaiian Homestead Commission Meeting-DHHL & SM Introduced Project
- 4.25.24 1 on 1 interview/talk story session with Kapa'akea Oceanside resident
- 4.25.24 MCH-CRP Planning Hui Meeting #1:
(Planning Hui includes representatives from all three ahupua'a, DHHL, G70, and SM.)
- 4.26.24 1 on 1 interview/talk story session with Kapa'akea Oceanside resident
- 5.08.24 MCH-CRP Planning Hui Meeting #2
- 5.13.24 MCH-CRP Beneficiary Meeting #1: Introduction to plan & project
- 6.12.24 Kapa'akea Homestead Assoc. Meeting: Sm Group-Intro Project, Discussion & Collected mana'o
- 6.17.24 MCH-CRP Planning Hui Meeting #3
- 6.18.24 Kalama'ula Homestead Assoc. Meeting: Sm Group-Intro Project, Discussion & Collected mana'o
- 6.20.24 MCH-CRP Beneficiary Meeting #2: What are the problems & opportunities?
- 7.30.24 MCH-CRP Planning Hui Meeting #4

WHAT IS TO COME:

August 2024 **MCH-CRP Beneficiary Meeting #3: Rank and choose priority sites.**

8.08.24 **MCH-CRP Planning Hui Meeting #5**

Small Group Interviews

Technical Meetings

Ahupua'a Huaka'i

8.20.24 **Kalama'ula Homestead Association Meeting**

September/ **MCH-CRP Beneficiary Meeting #4: What can be done?**

October **MCH-CRP Planning Hui Meeting #6**

2024 **Small Group Interviews**

Technical Meetings

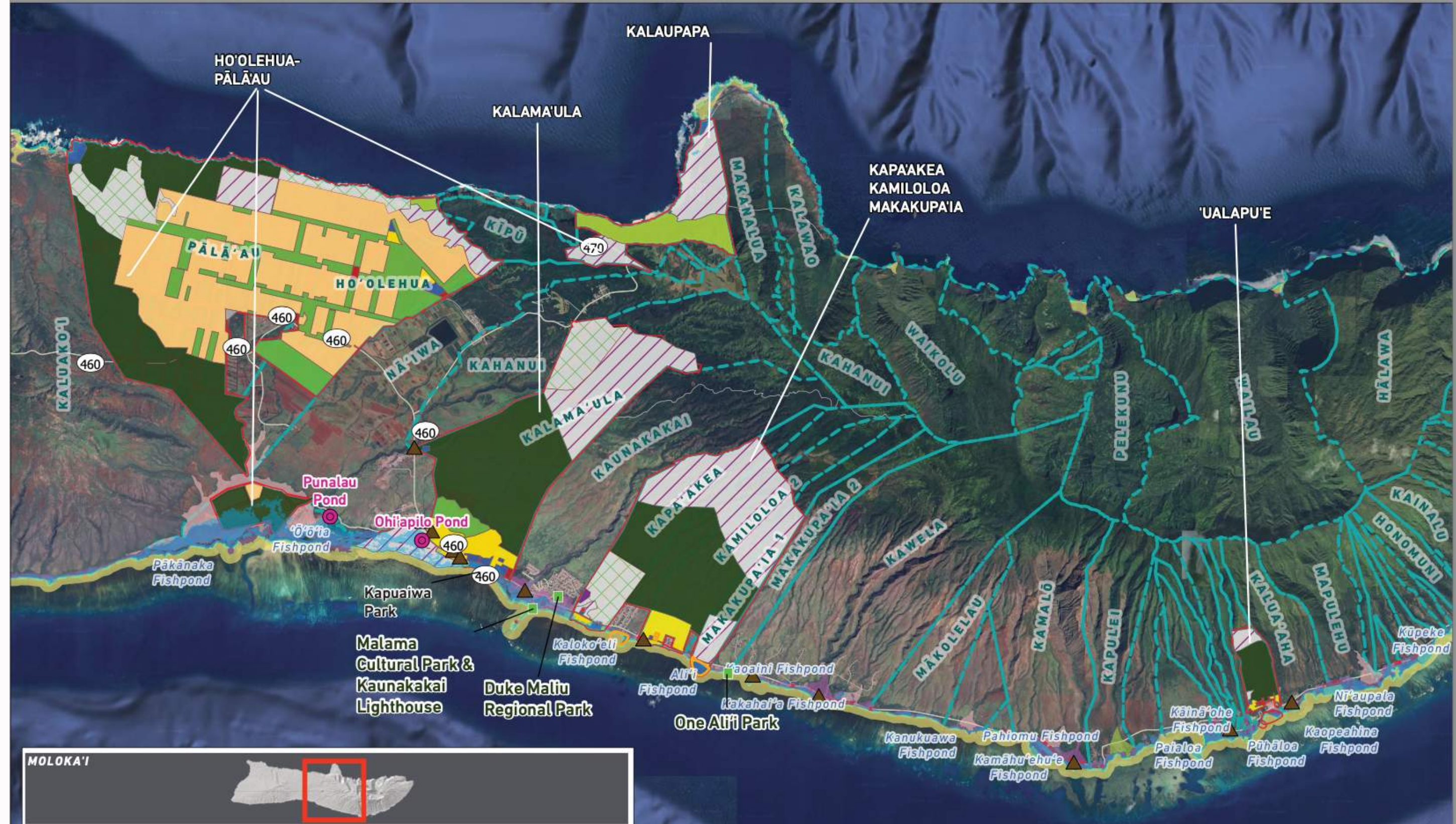
Ahupua'a Huaka'i

Kapa'akea & Kalama'ula Homestead Association

Nov-Dec 2024 **G70-Work on Preliminary Draft**

Jan 2025 **MCH-CRP Beneficiary Meeting #5: Beneficiary review Preliminary Draft**

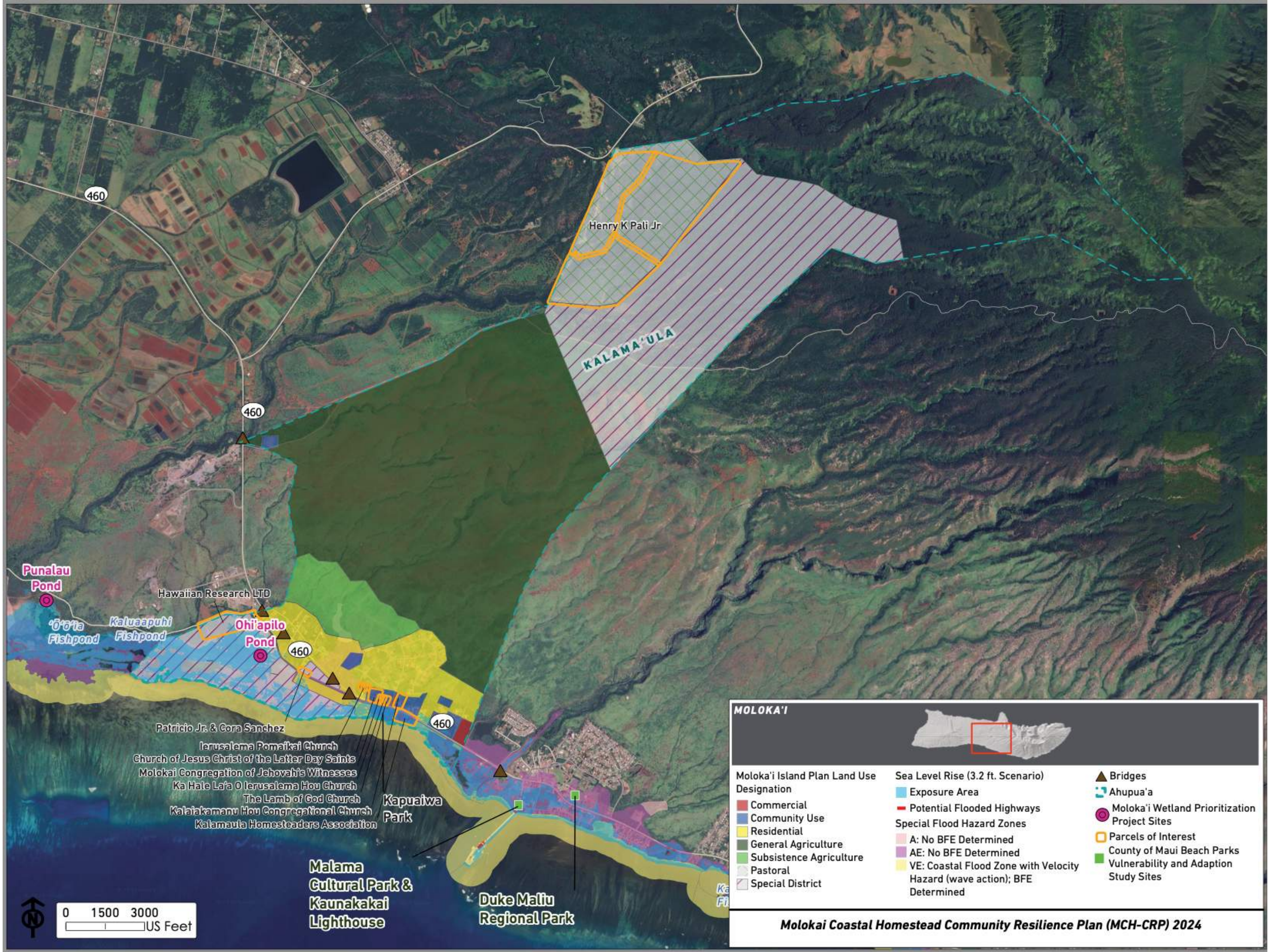
March 2025 **Project MCH-CRP : Phase 1 PAU**

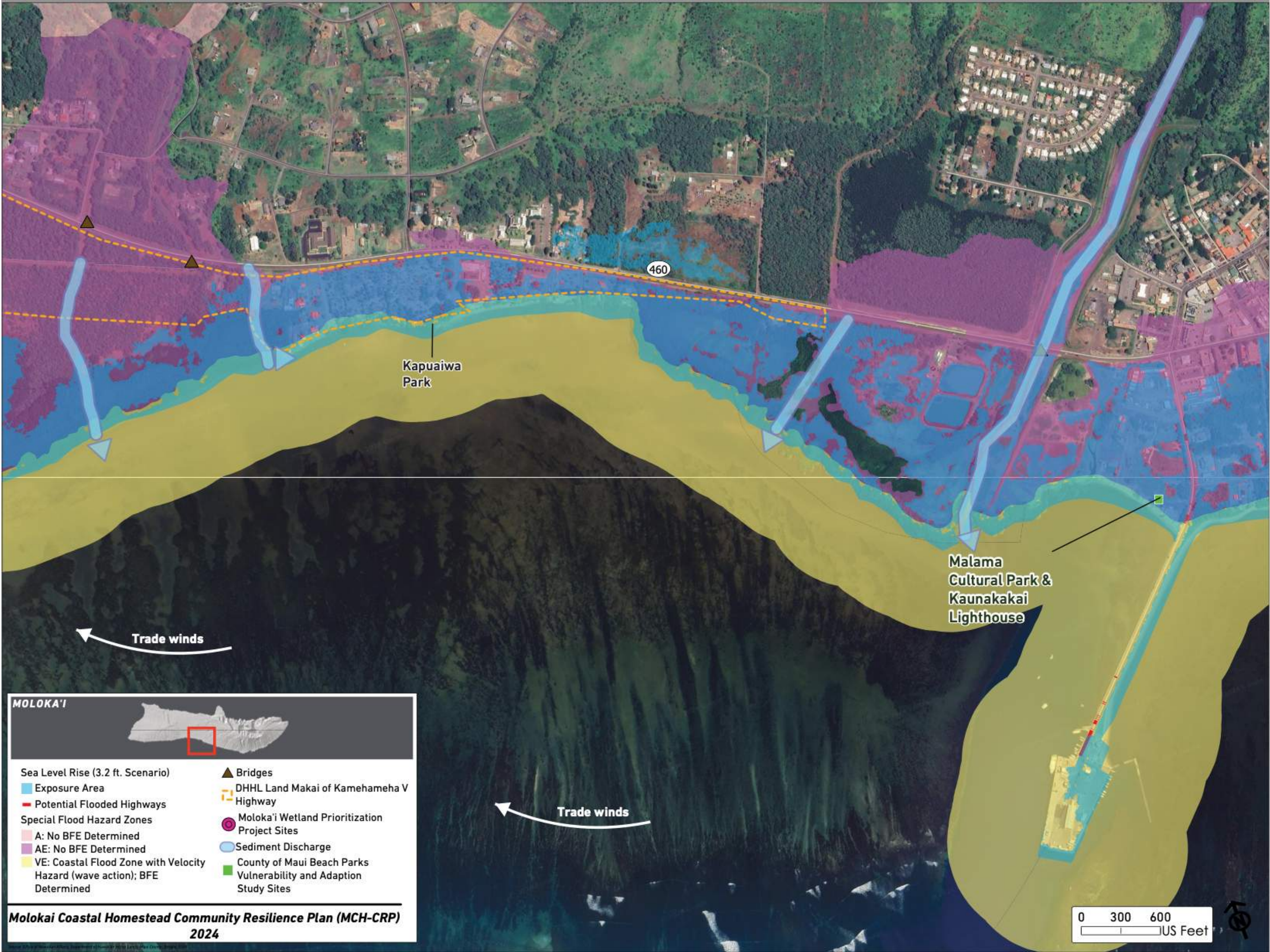


DHHL JURISDICTION

Per the Hawaiian Homes Commission Act (HHCA), the Hawaiian Homes Commission (HHC) has sole authority over land use and zoning on Hawaiian Home Lands (HHL). DHHL can waive various County requirements, but in order to protect public health, safety, and welfare can require compliance with County building codes, flood development regulations and other ordinances.

KALAMA'ULA





MOLOKA'I

Sea Level Rise (3.2 ft. Scenario)

- Exposure Area
- Potential Flooded Highways

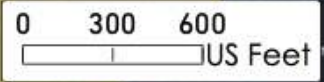
Special Flood Hazard Zones

- A: No BFE Determined
- AE: No BFE Determined
- VE: Coastal Flood Zone with Velocity Hazard (wave action); BFE Determined

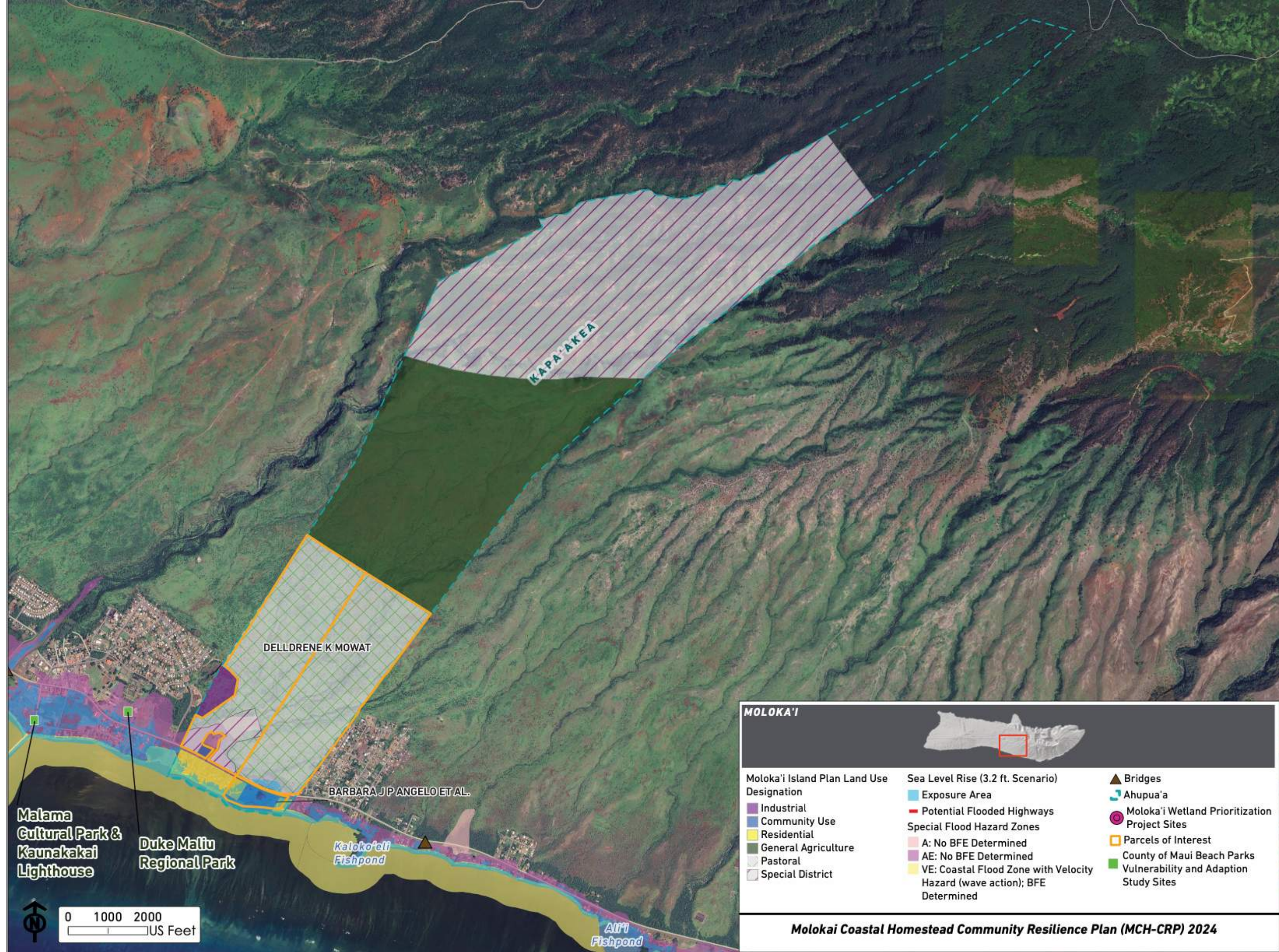
Legend:

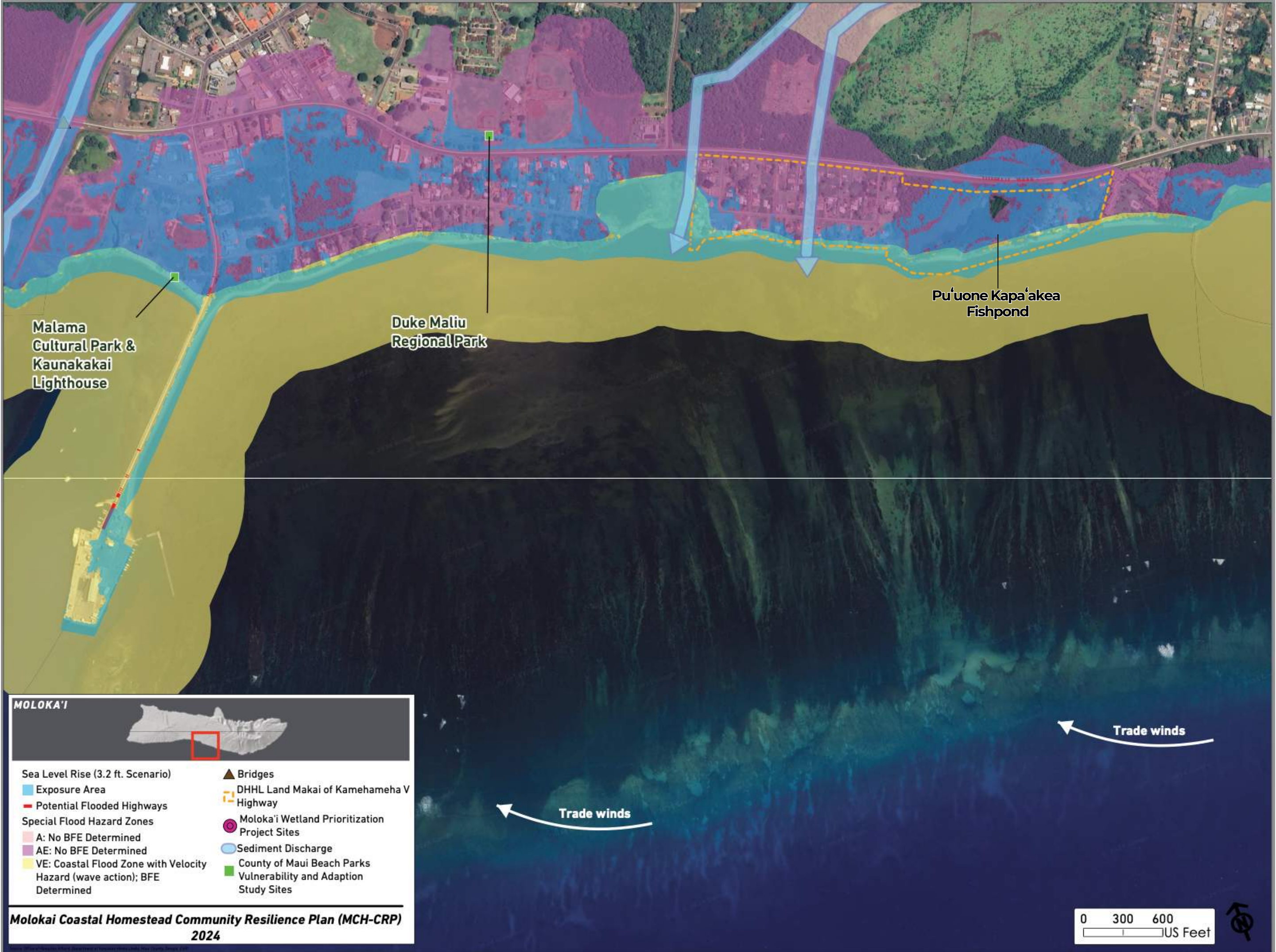
- Bridges
- DHHL Land Makai of Kamehameha V Highway
- Moloka'i Wetland Prioritization Project Sites
- Sediment Discharge
- County of Maui Beach Parks Vulnerability and Adaption Study Sites

Molokai Coastal Homestead Community Resilience Plan (MCH-CRP) 2024

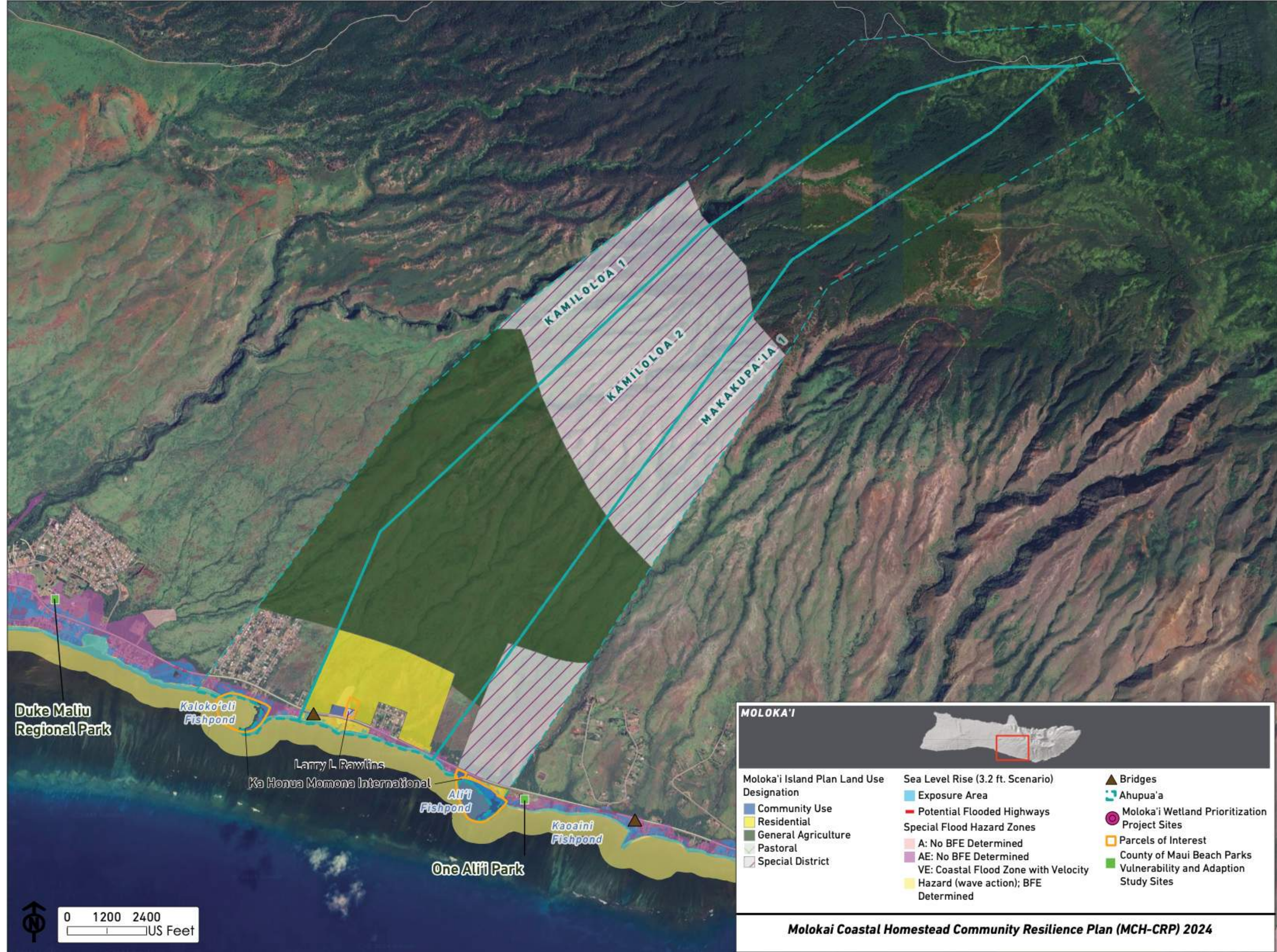


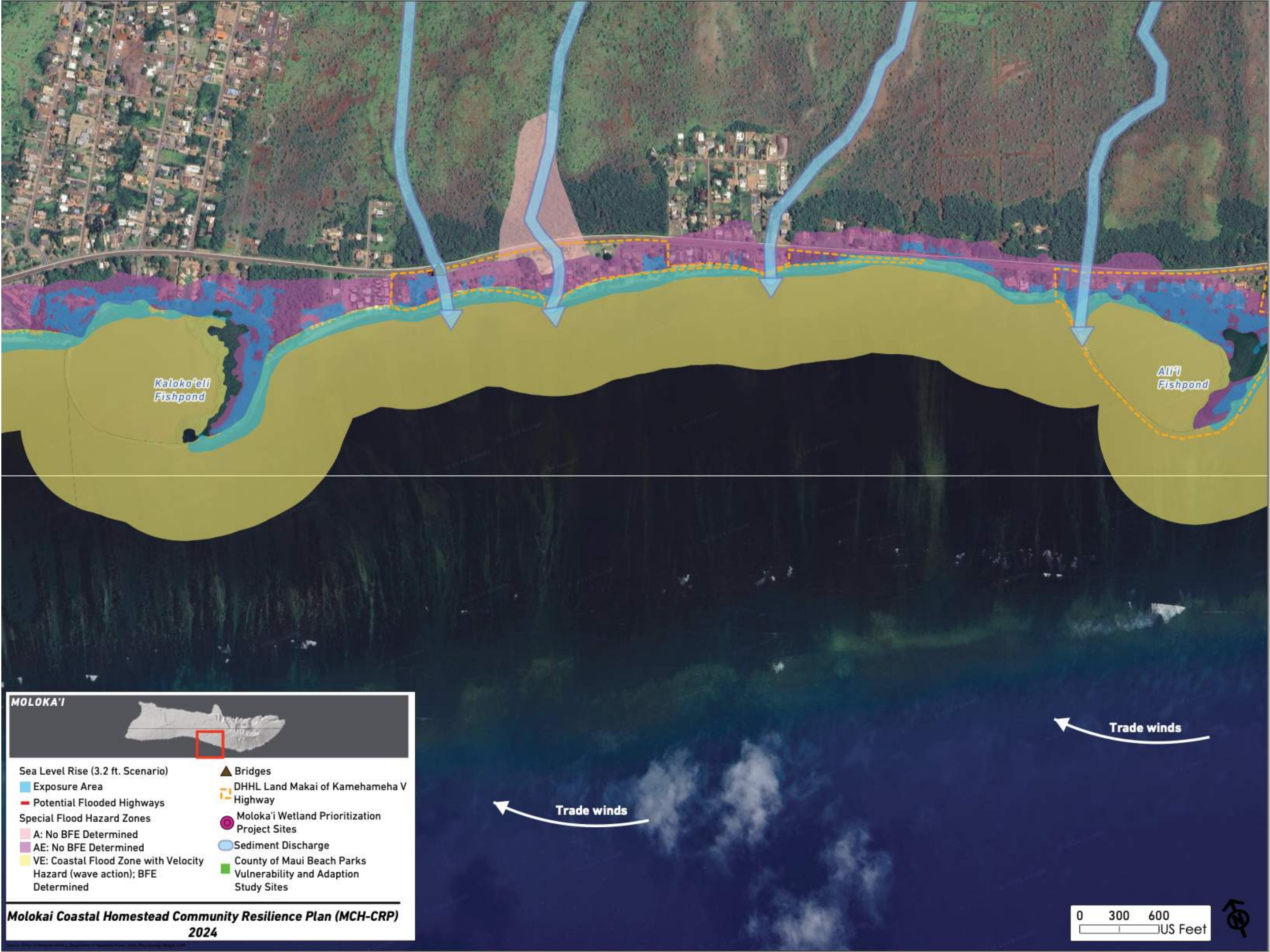
KAPA'AKEA






KAMILOLOA - ONE ALI'I





MOLOKAʻI



Sea Level Rise (3.2 ft. Scenario)

- Exposure Area
- Potential Flooded Highways

Special Flood Hazard Zones

- A: No BFE Determined
- AE: No BFE Determined
- VE: Coastal Flood Zone with Velocity Hazard (wave action); BFE Determined

Legend:

- Bridges
- DHHL Land Makai of Kamehameha V Highway
- Molokai Wetland Prioritization Project Sites
- Sediment Discharge
- County of Maui Beach Parks Vulnerability and Adaption Study Sites

Molokai Coastal Homestead Community Resilience Plan (MCH-CRP) 2024

0 300 600
US Feet



PROMPT QUESTIONS:

In your area of expertise and responsibility on Molokai, what are the major challenges or strengths you see in your particular area?

In your area, how do you envision a truly resilient ahupua'a system?

MAHALO !

ANY QUESTIONS OR CONCERNS?

NANCY MCPHERSON - DHHL

✉ nancy.m.mcpherson@hawaii.gov

SUST'ĀINABLE MOLOKAI

✉ heather@sustainablemolokai.org

