

How is this project different from DHHL

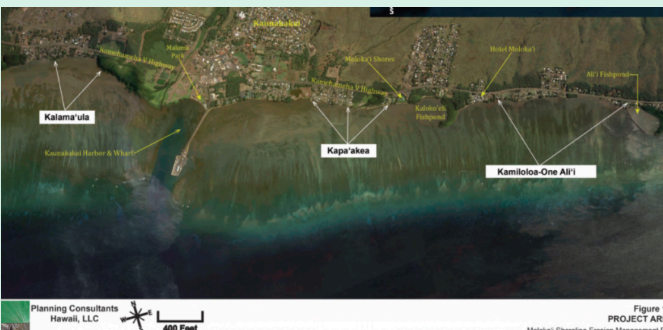
South Molokai Shoreline Erosion
Management Plan (SM-SEMP)?

This plan will build upon the efforts of
the DHHL SM-SEMP & other ongoing
work to minimize redundancy,
maximize efficiency & leverage funding.

The SM-SEMP: 2018 to 2024

*DHHL & consultants:
Planning Consultants Hawai'i, LLC
& Coastal Planners, LLC*

- Community-Based Shoreline Erosion Management Plan
- Identify effective management strategies
- Educate community on causes & appropriate management responses
- Responses and strategies incorporated into maps for this project



Project Team

**Project Role: Beneficiary Engagement
Consultant -- Sust'āinable Molokai**
PH:
Email: heather@sustainablemolokai.org

**Project Role: Primary Consultant & Plan
Writer -- G70**

**Project Role: Lead Agency
Department of Hawaiian Home Lands (DHHL)**
nancy.m.mcpherson@hawaii.gov



Phase I: Planning Timeline



MOLOKAI COASTAL HOMESTEAD COMMUNITY RESILIENCE PLAN (MCH-CRP)

This project will produce a
Molokai Coastal Homestead
Community Resilience Plan for the
DHHL Homestead communities of
Kalamā'ula, Kapa'akea,
& Kamiloloa-One Ali'i.

The Plan will integrate Traditional
Ecological Knowledge (TEK) alongside
scientific approaches to provide a
comprehensive strategy for enhancing
the community's resilience in the face
of climate change and coastal hazards.



This PH 1 Planning Process will...

- Engage all relevant stakeholders, including cultural practitioners, watershed restoration groups, and soil and water conservation organizations.
- Identify up to 5 Priority Projects per ahupua'a that will stabilize and restore shorelines, mitigate coastal flooding and sedimentation, and emphasize culturally grounded, nature-based solutions.

THE MOLOKAI COASTAL HOMESTEAD COMMUNITY RESILIENCE PLAN IS INTENDED TO OPEN THE DOOR TO MORE NFWF NCRF FUNDING (PHASES 2-4)

Phase 1
Community Capacity
Building & Planning

Phase 2
Site Assessment &
Preliminary Design

Phase 3
Final Design
& Permitting

Phase 4
Restoration
Implementation

THIS
PROJECT

WHO

This project will focus on DHHL Coastal Homestead communities and consult with State and County agencies, cultural practitioners and other stakeholders.

WHAT

This project will produce a Molokai Coastal Homestead Community Resilience Plan for the DHHL Homestead communities of Kalama'ula, Kapa'akea, & Kamiloloa-One Ali'i

WHERE

From MAUKA to MAKAI !
Ahupua'a of Kalama'ula, Kapa'akea, Kamiloloa and Makakupa'ia.

FUNDING

Funding was provided through the National Fish and Wildlife Foundation (NFWF) National Coastal Resilience Fund (NCRF). This stage favors a resiliency plan with nature-based solutions that provides both a Community Resilience benefit and Fish and Wildlife benefit.

WHY

MCH-CRP will build on efforts of CCSLAR and SM-SEMP to minimize redundancy and maximize efficiency. In addition, ahupua'a/traditional native Hawaiian land management observations and techniques will be utilized to identify not only projects makai, but mauka as well.

HOW

Multiple meetings & workshops will be held with beneficiaries to go over different issues & concerns and identify up to 5 priority projects per ahupua'a. See timeline on back for more information.