

# MOLOKAI COASTAL HOMESTEAD COMMUNITY RESILIENCE PLAN

Sust'āinable Molokai  
G70

State of Hawai'i - DHHL

Beneficiary Meeting #1  
Intro to Plan & Process  
May 13, 2024



WHAT DOES  
***RESILIENCY***  
MEAN TO YOU?

WHAT DOES ***RESILIENCY***  
MEAN TO YOU?





# RESILIENCE

the capacity to withstand or to recover quickly from difficulties; toughness.

**RECOVER**

**GO GETTUM**

**MAKE HAAD**

**GRIT**



# MOLOKAI SM-SEMP (2018 to 2022)

- Community-based Shoreline Erosion Management Plan
- Identify effective management strategies
- Educate community on causes & appropriate management responses





# OTHER ONGOING RELATED PLANS

## DHHL Plans and Initiatives - Molokai

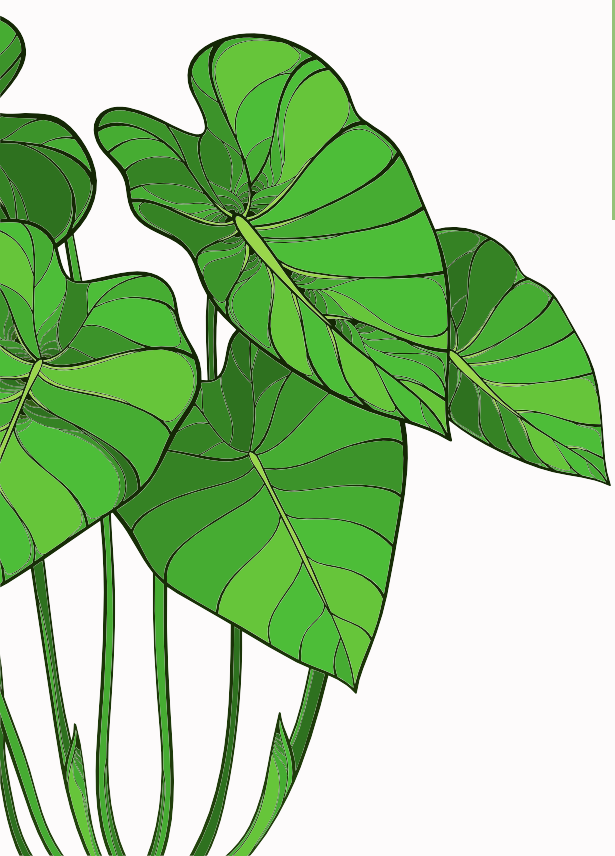
- (2005) Molokai Island Plan
- (2019) Molokai Regional Plan
- (2022) SM-SEMP
- (2023) Malama Cultural Park - Special Area Plan
- DHHL Cesspool Assessments
- DHHL South Molokai Drainage Study

## Island-Specific Plans & Assessments

- Molokai Water Use Development Plan (currently being updated)
- Molokai Clean Energy Resiliency Action Plan
- Molokai Wetland Partnership:
- (2023) USGS: A Prioritization Plan for Coastal Wetland Restoration on Molokai & Wetland Restoration for a Resilient Community & Thriving Waterbirds in Molokaʻi

## County of Maui Plans

- (2021) COM Wastewater Infrastructure Inundation Study-MKK: KWRF
- (2021) Beach Parks Vulnerability and Adaptation Study-MKK sites
- (2023) COM Climate Action & Resiliency Plan (CARP)
- (2024) Molokai Climate Change and Sea-Level Rise Adaptation and Resiliency Plan (CCSLAR)



# FUNDING

This project is funded through the National Fish and Wildlife Foundation (NFWF) National Coastal Resilience Fund (NCRF).



This stage funds a...**Resiliency Plan with nature-based solutions that provide Community Resilience and Fish and Wildlife benefits.**



On completion of the MCH-CRP, DHHL could apply for more funding for future phases.





# OUR TEAM



Nancy  
McPherson

DHHL  
Climate Change  
and Resilience  
Project Planner



Barbara Natale  
Cody Winchester  
Kawika McKeague

G70  
Primary Project  
Consultant &  
Plan Writer



Katy Mokuau  
Heather Place

Community  
Outreach  
Consultant

Coastal Planners,  
LLC

Thorne Abbott

Technical  
Advisor

# What is your role in MCH-CRP?



Nancy  
McPherson

DHHL  
Climate Change  
and Resilience  
Project Planner



Barbara Natale  
Cody Winchester  
Kawika McKeague

G70  
Primary Project Consultant & Plan  
Writer

# What is your role in MCH-CRP?



Katy Mokuau  
Heather Place

Community  
Outreach  
Consultant

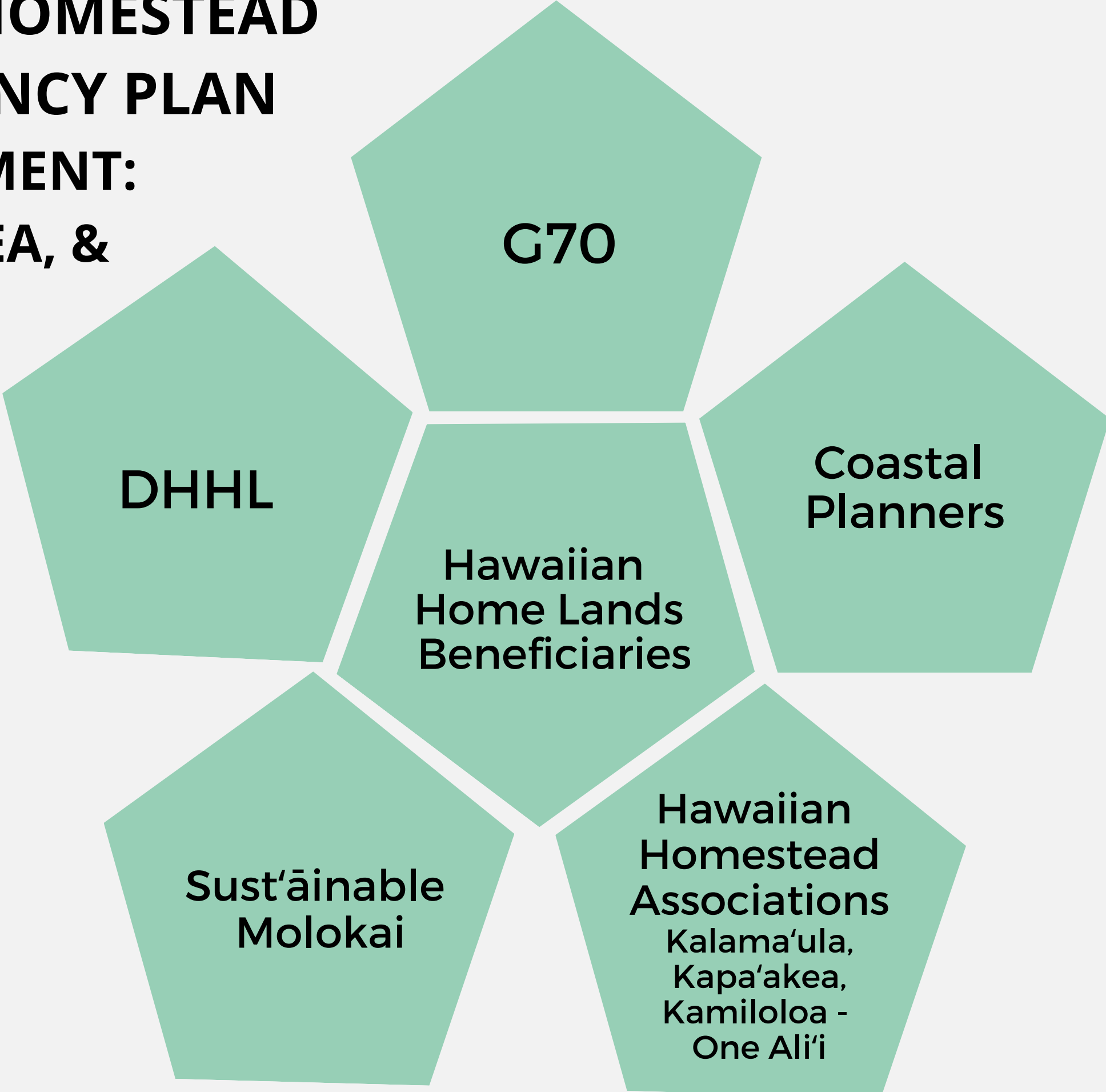
Coastal Planners,  
LLC

Thorne Abbott

Technical  
Advisor



**MOLOKAI COASTAL HOMESTEAD  
COMMUNITY RESILIENCY PLAN  
BENEFICIARY ENGAGEMENT:  
KALAMA'ULA, KAPA'AKEA, &  
KAMILOLOA - ONE ALI'I**





# **WHAT IS THE MOLOKAI COASTAL HOMESTEAD COMMUNITY RESILIENCY PLAN?**

This project will produce a Molokai Coastal Homestead Community Resilience Plan for the DHHL Homestead communities of Kalama'ula, Kapa'akea, & Kamiloloa-One Ali'i





# WHAT AREA WILL THIS PLAN FOCUS ON?

From **MAUKA TO MAKAI!**  
Ahupua'a of Kalama'ula, Kapa'akea,  
Kamiloloa and Makakupa'ia (One Ali'i)





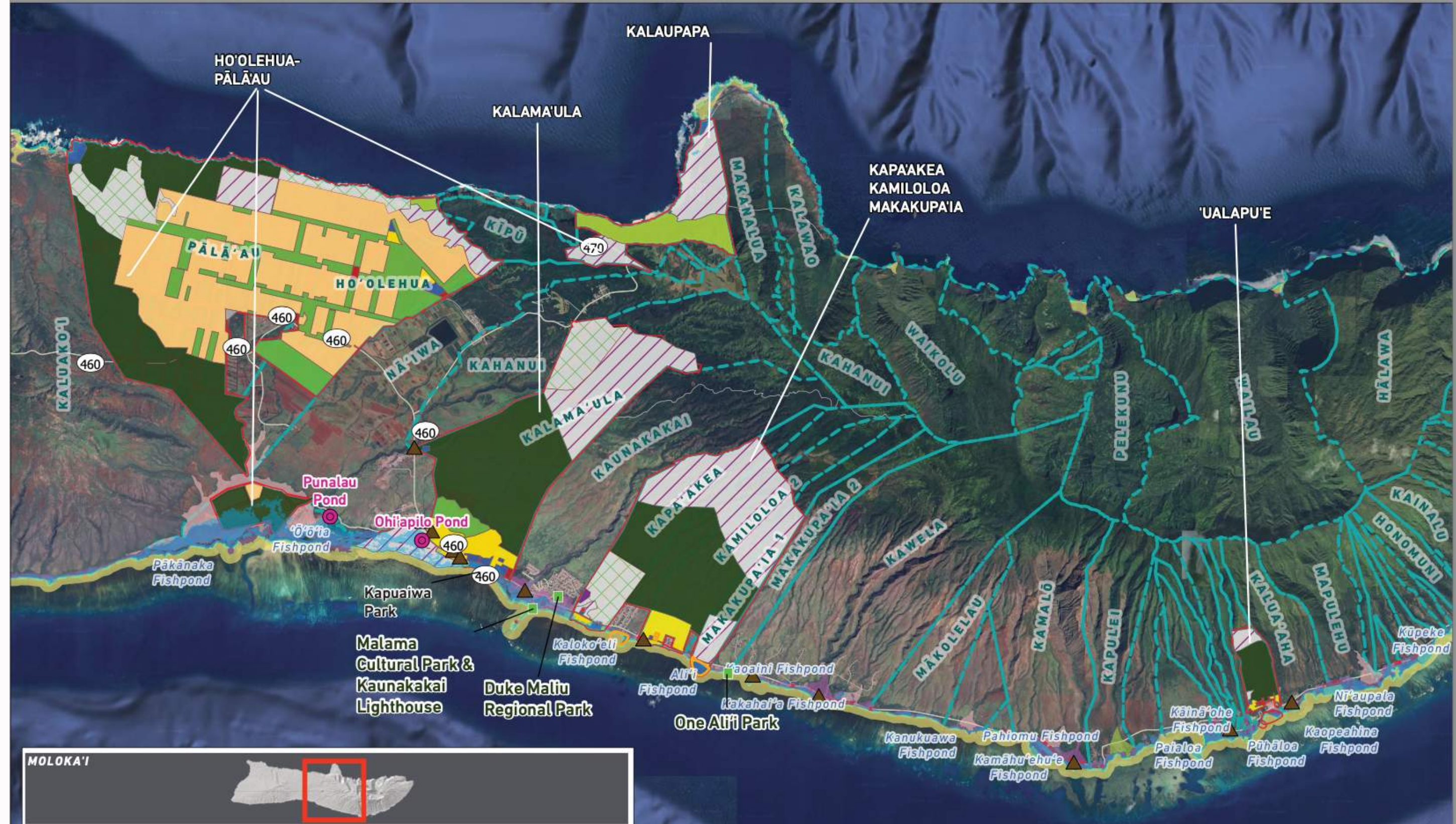
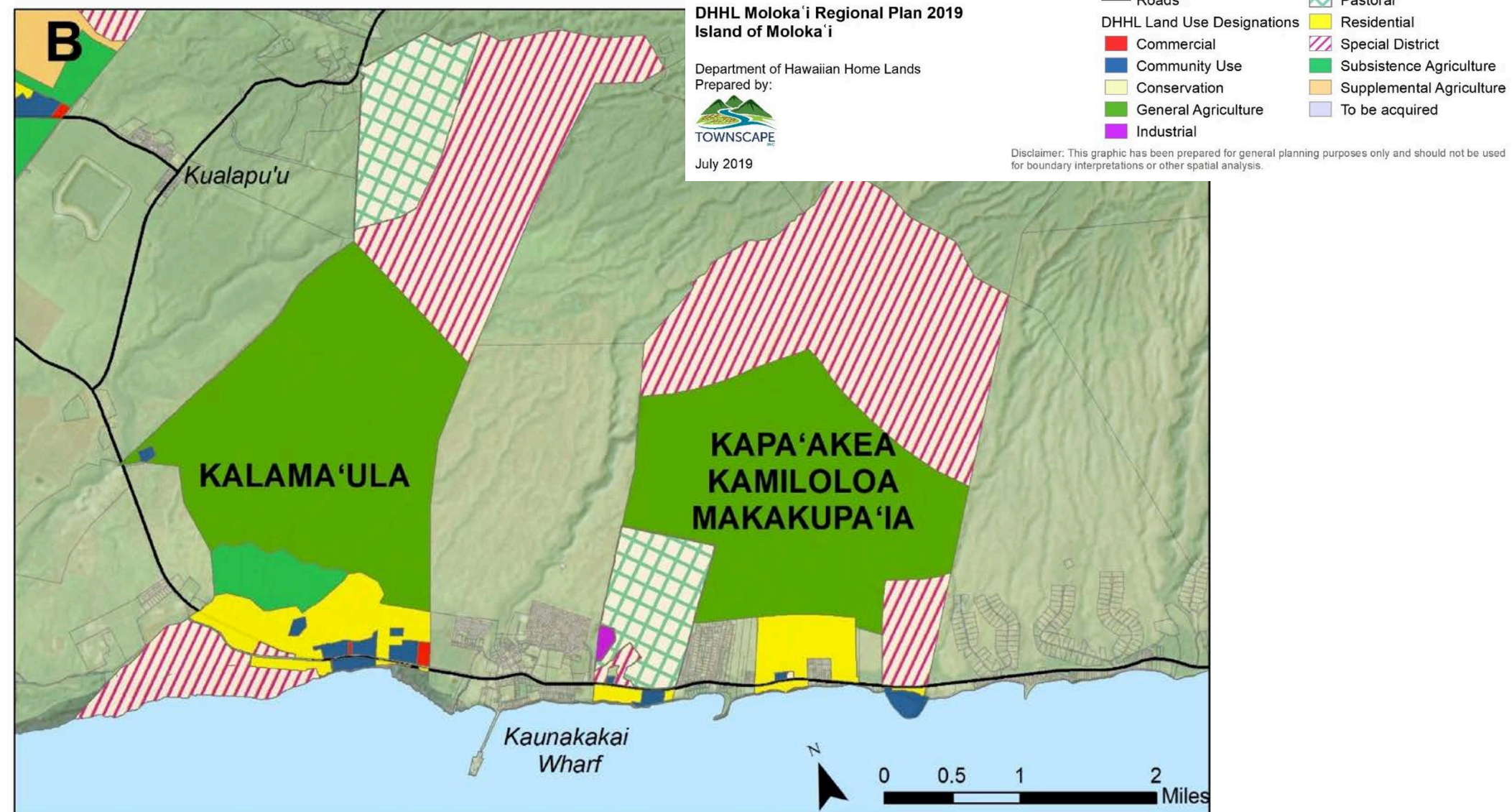




Figure 7. Moloka'i Island Plan Land Use Designations (continued)

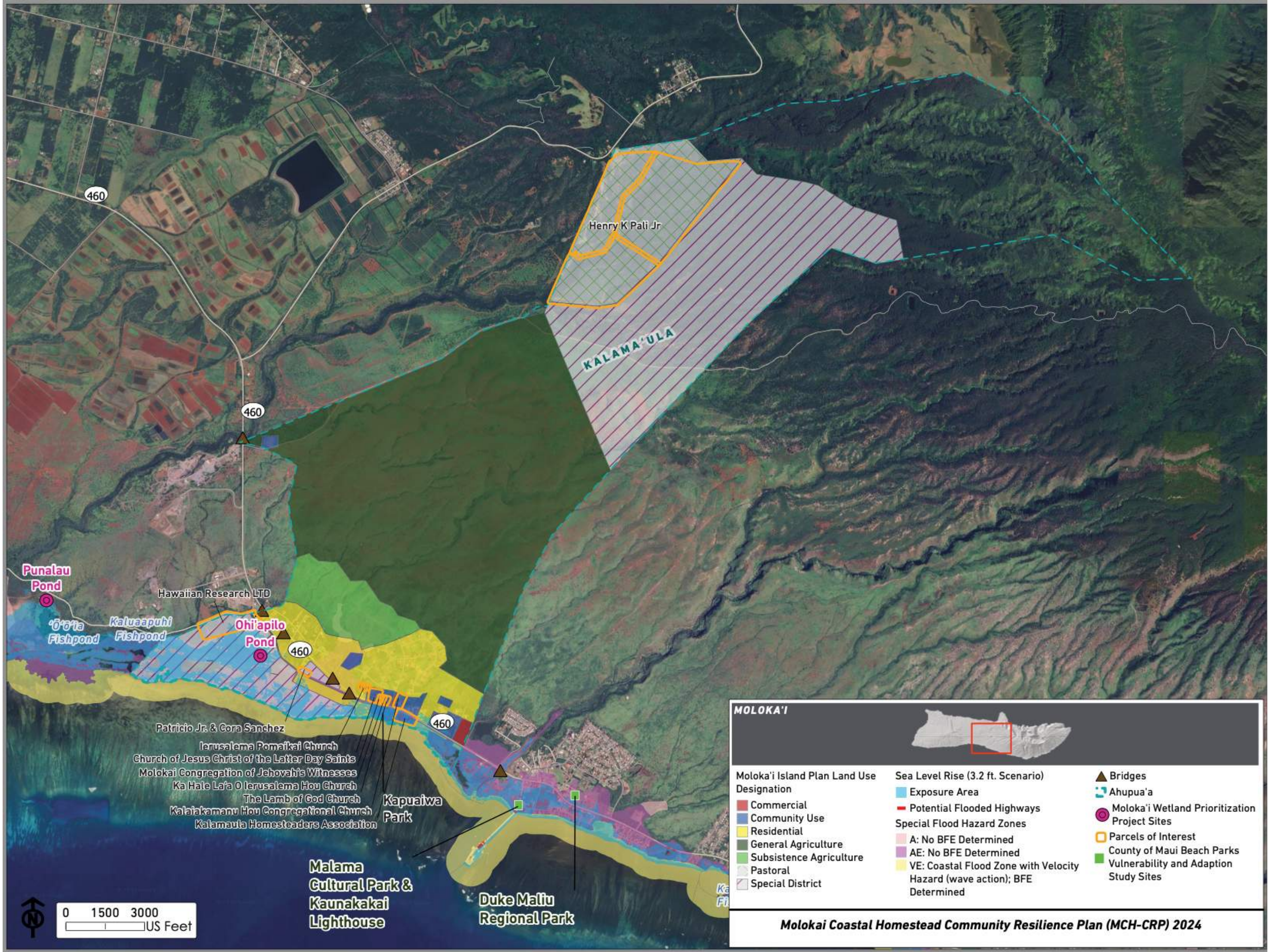




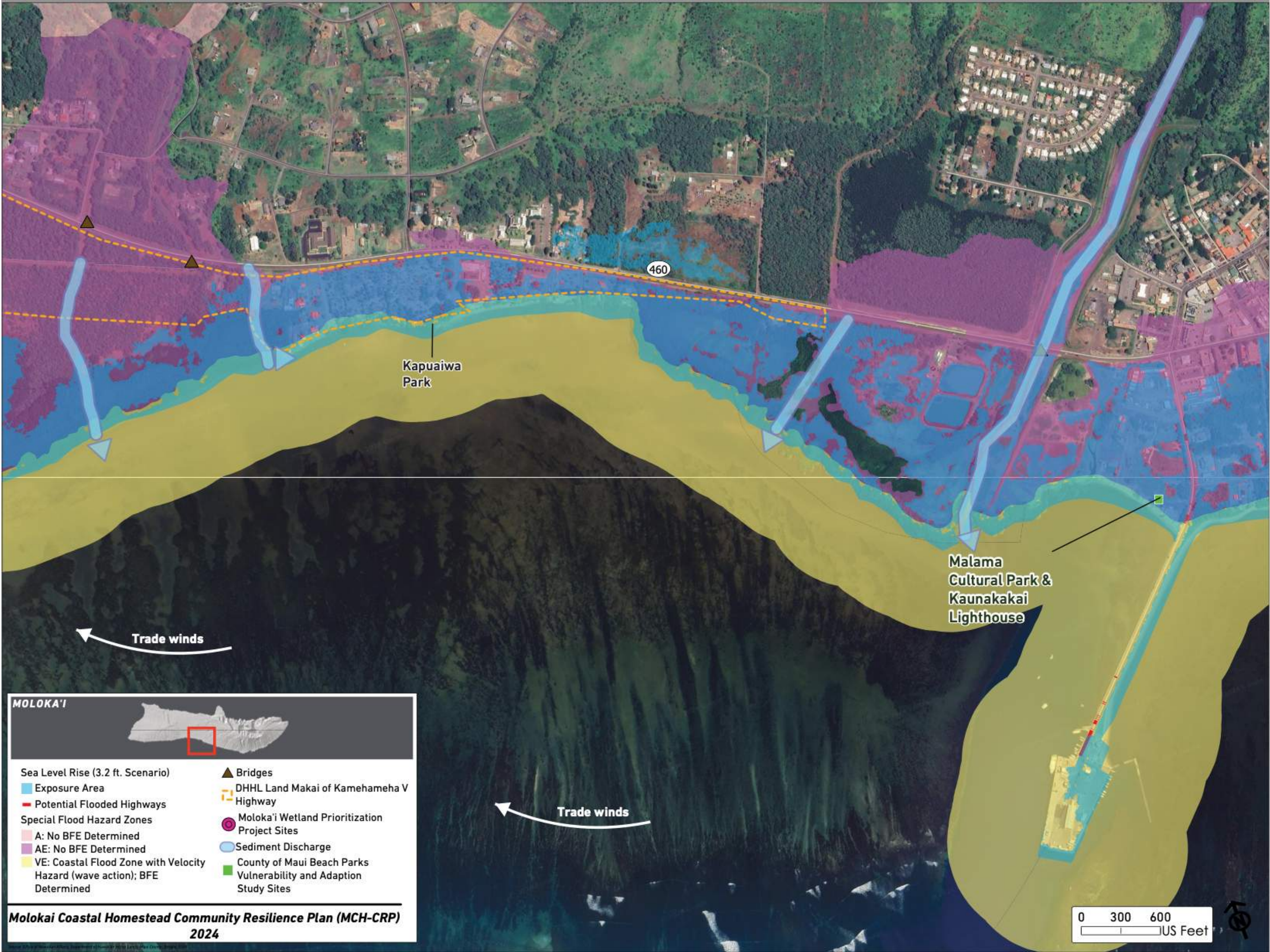




# KALAMA'ULA







**MOLOKA'I**

Sea Level Rise (3.2 ft. Scenario)

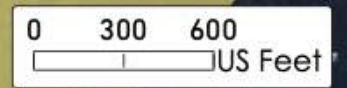
- Exposure Area
- Potential Flooded Highways

Special Flood Hazard Zones

- A: No BFE Determined
- AE: No BFE Determined
- VE: Coastal Flood Zone with Velocity Hazard (wave action); BFE Determined

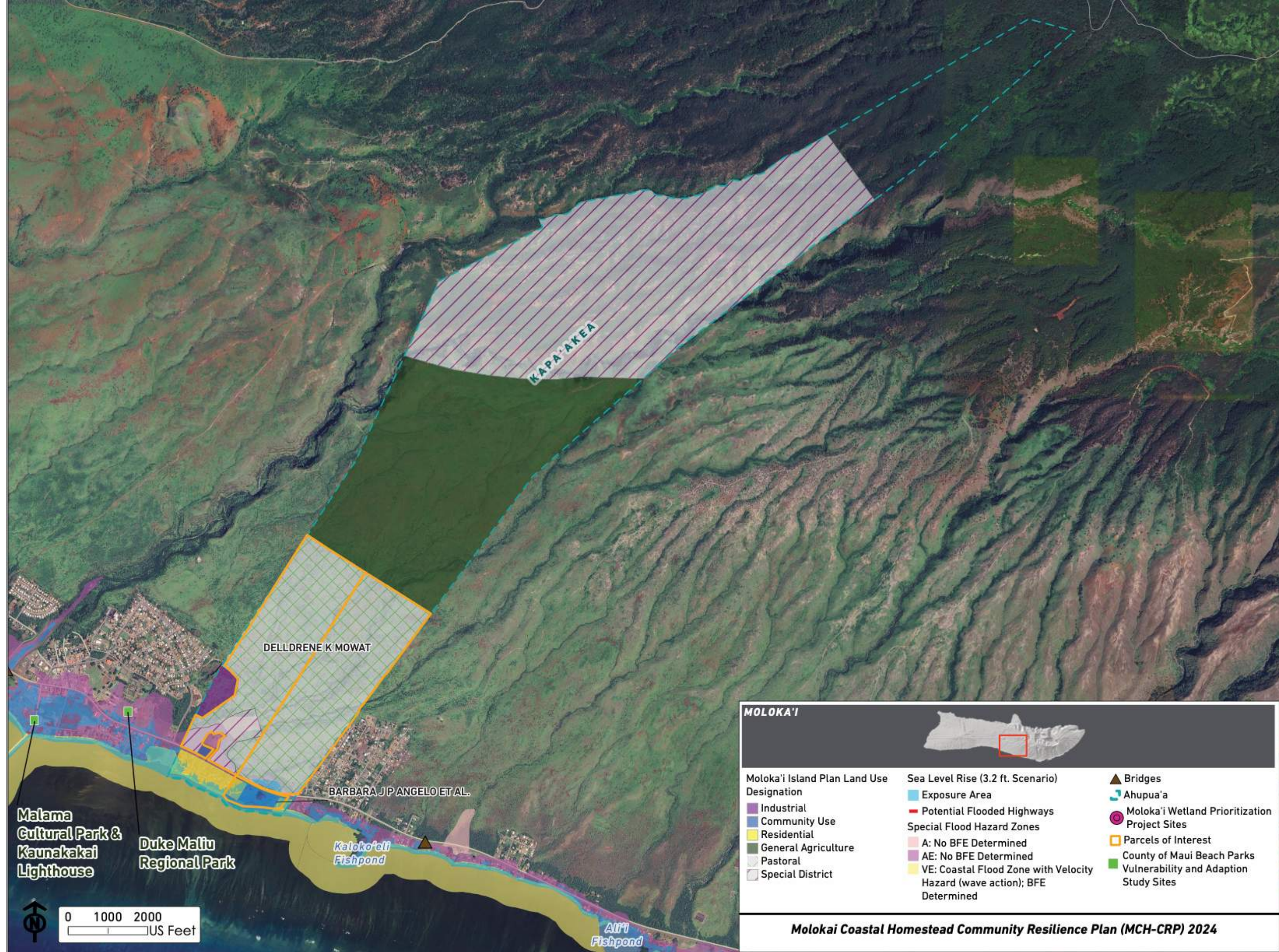
- Bridges
- DHHL Land Makai of Kamehameha V Highway
- Moloka'i Wetland Prioritization Project Sites
- Sediment Discharge
- County of Maui Beach Parks Vulnerability and Adaption Study Sites

**Molokai Coastal Homestead Community Resilience Plan (MCH-CRP)**  
**2024**

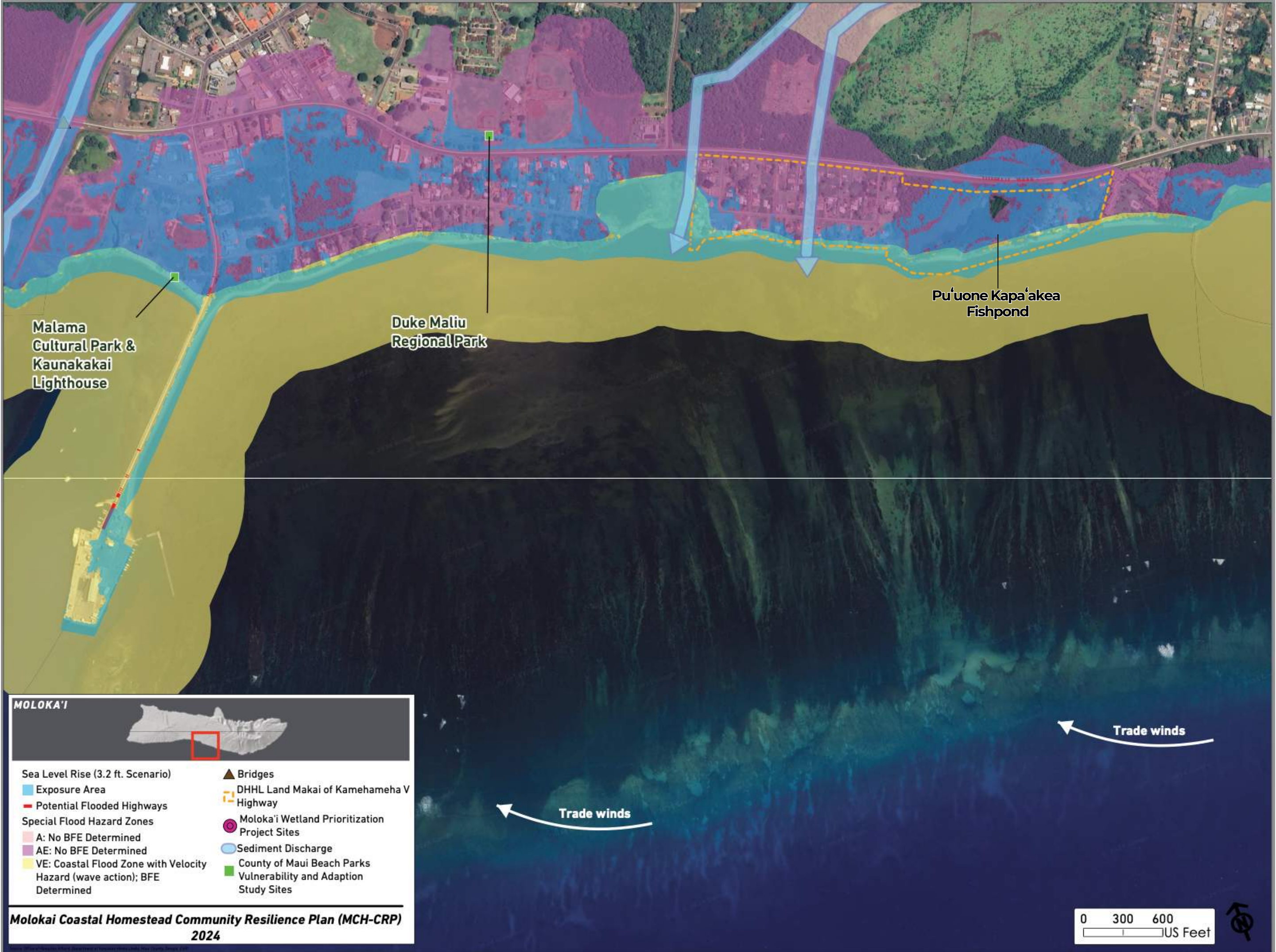




# KAPA'AKEA

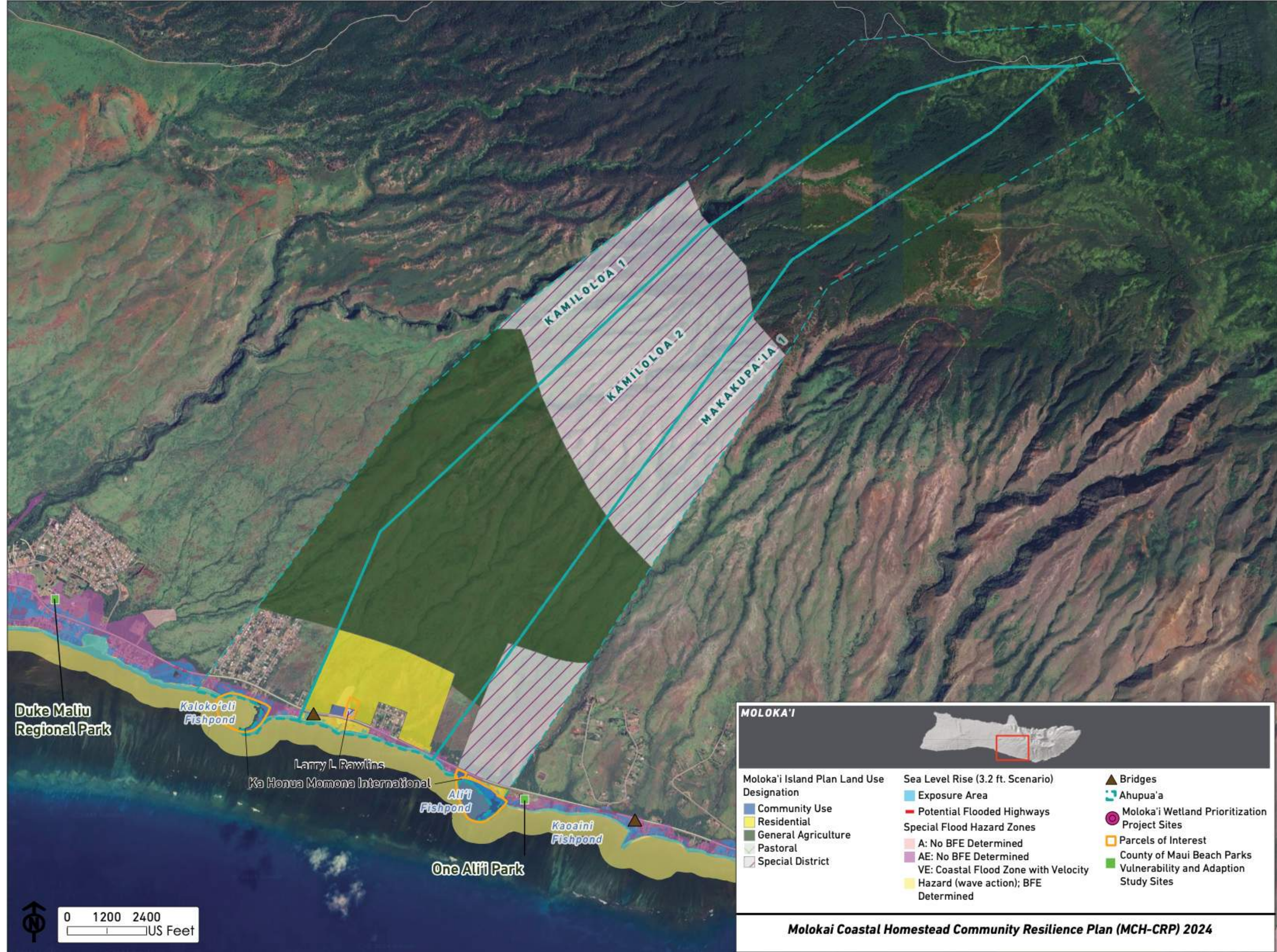




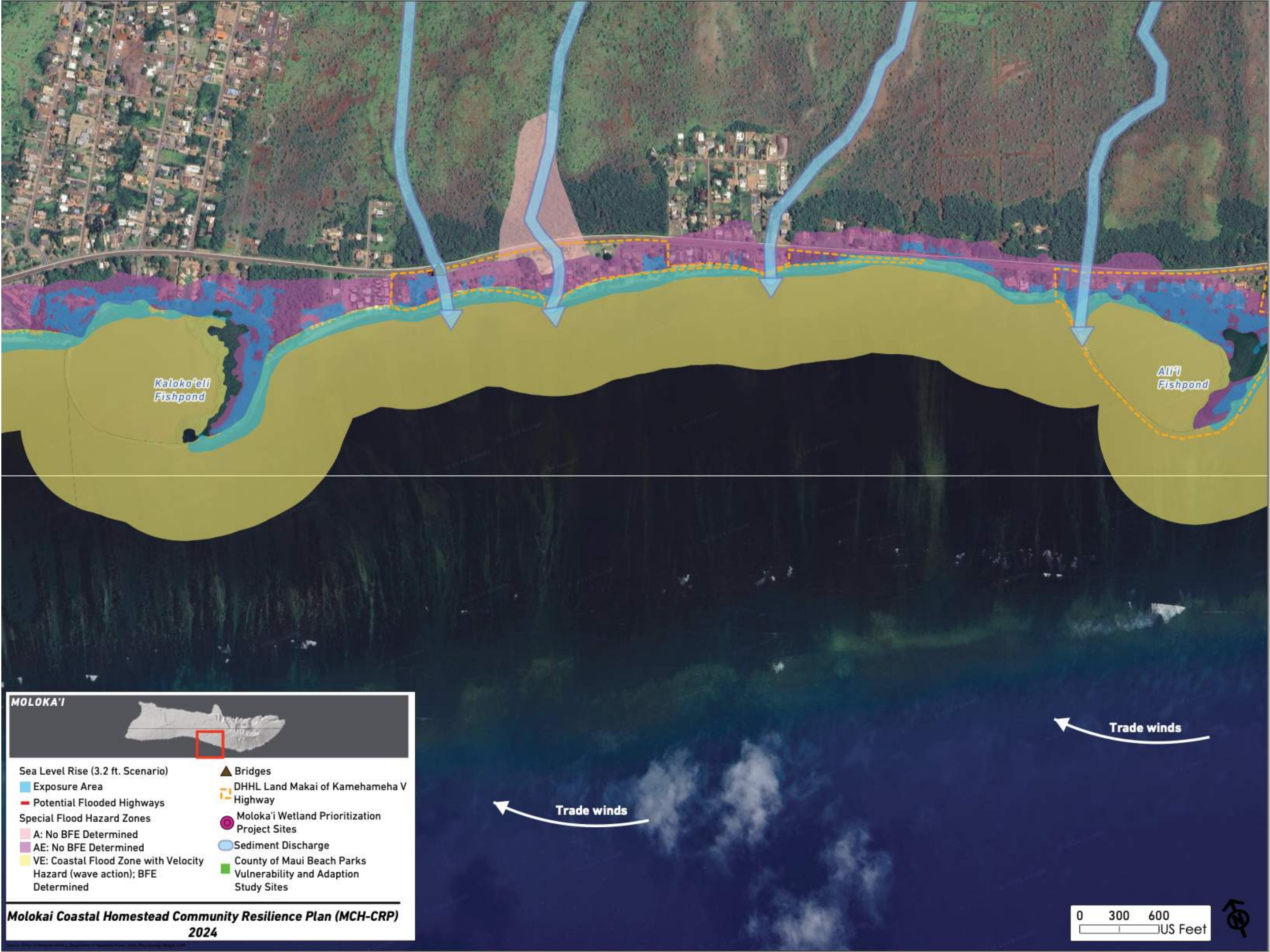





# KAMILOLOA - ONE ALI'I





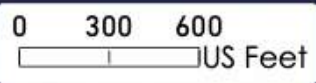


**MOLOKAʻI**



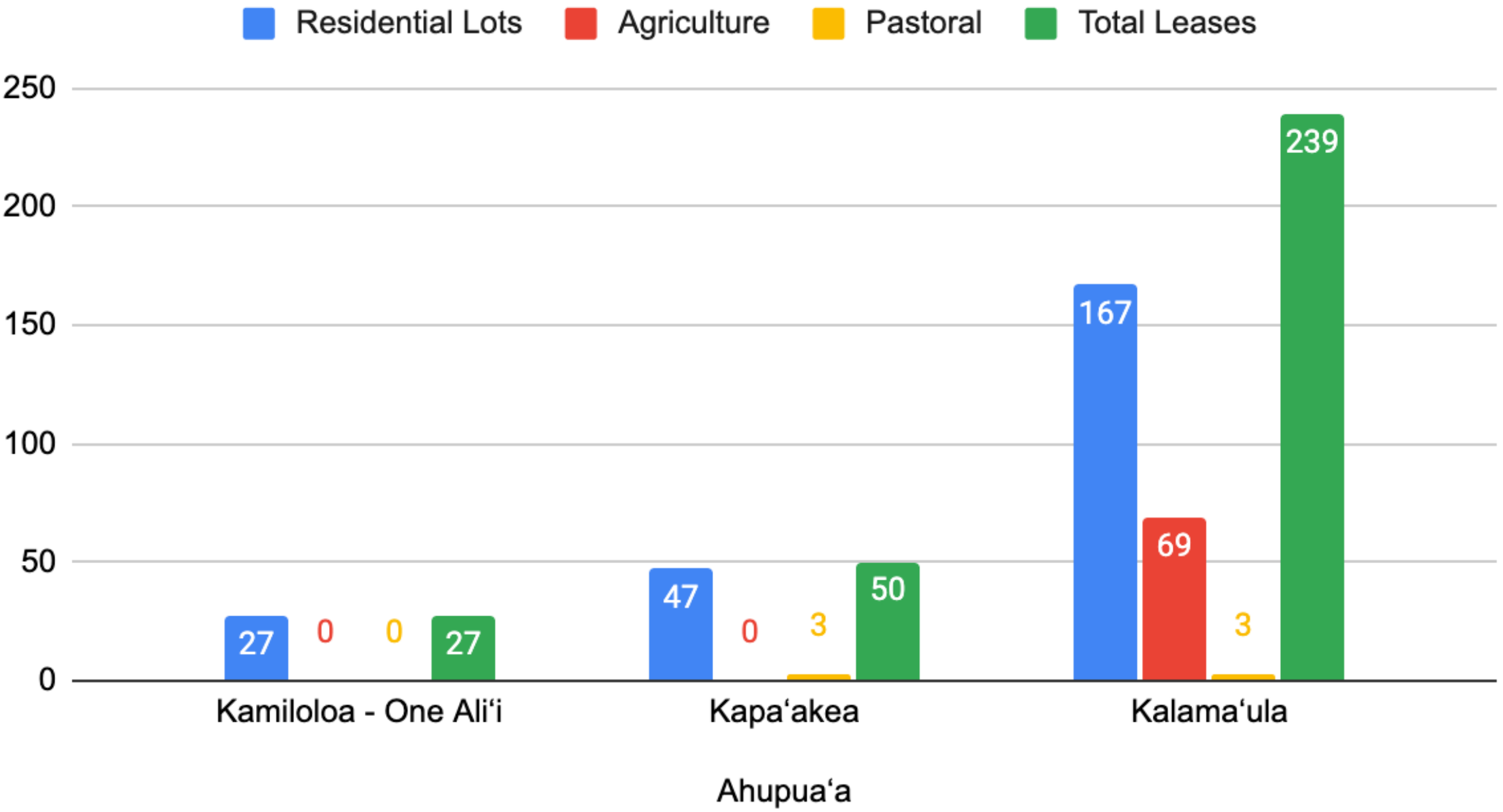
Sea Level Rise (3.2 ft. Scenario)	▲ Bridges
Exposure Area	DHHL Land Makai of Kamehameha V Highway
Potential Flooded Highways	Molokai Wetland Prioritization Project Sites
Special Flood Hazard Zones	Sediment Discharge
A: No BFE Determined	County of Maui Beach Parks
AE: No BFE Determined	Vulnerability and Adaption Study Sites
VE: Coastal Flood Zone with Velocity Hazard (wave action); BFE Determined	

**Molokai Coastal Homestead Community Resilience Plan (MCH-CRP) 2024**





# Residential Lots, Agriculture, Pastoral and Total Leases



## Kamiloloa - One Ali'i Homestead:

**27** Residential Lots  
**75** Residents  
=27 Total Leases

## Kapa'akea Homestead:

**47** Residential Lots  
**3** Pastoral Lots  
**166** Residents  
=50 Total Leases

## Kalama'ula Homestead:

**160** Residential Lots  
**69** Agriculture Lots  
**3** Pastoral Lots  
**322** Residents  
=232 Total Leases





# WHAT IS THE PROCESS OF THIS PLAN?

Multiple meetings & workshops will be held with beneficiaries to go over different issues & concerns and identify up to:

**5 priority projects per Ahupua'a.**





# WHAT IS THE PROCESS OF THIS PLAN?

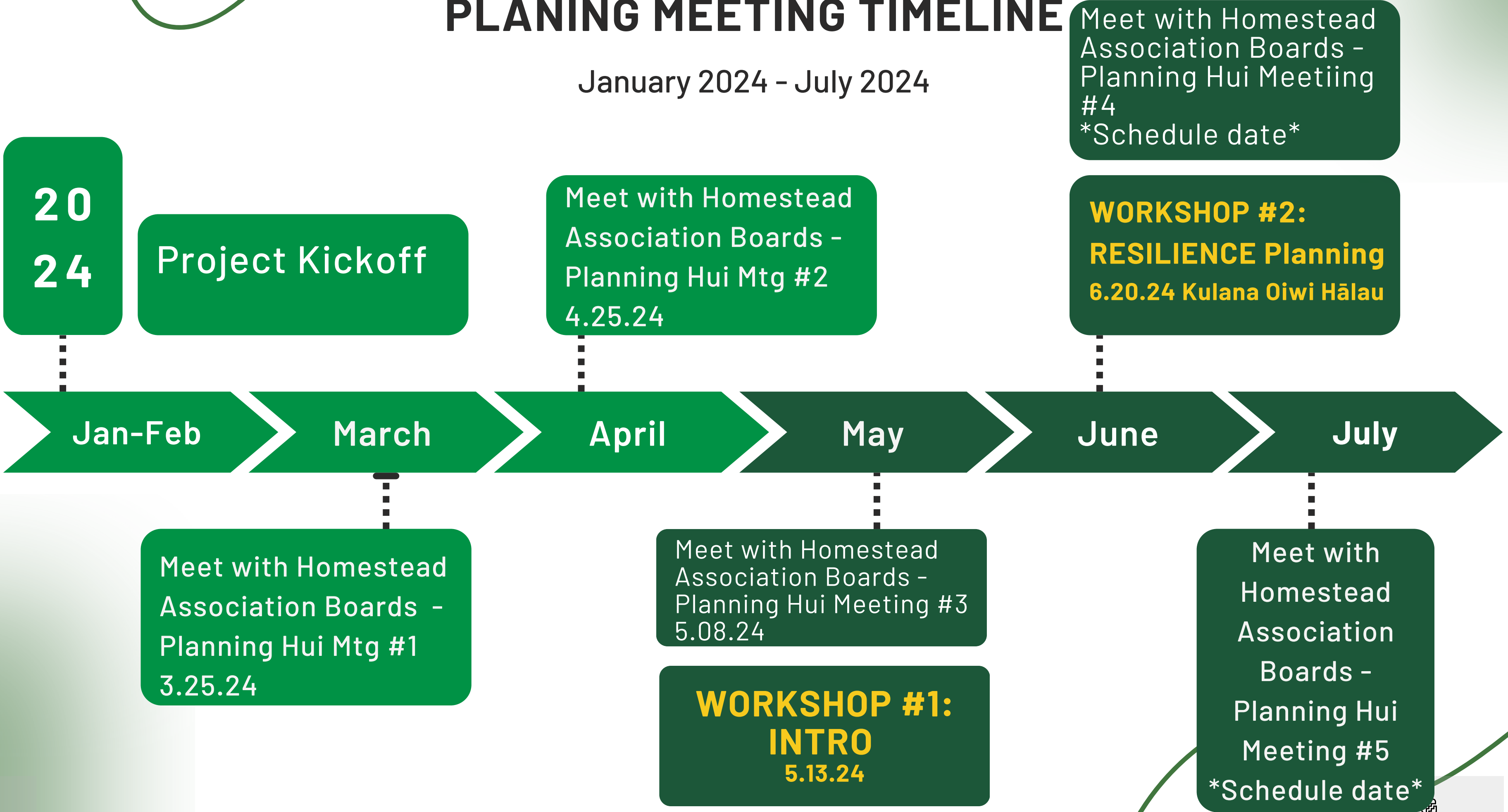
## Beneficiary Consultation & Collaboration with:

Native Hawaiian key stakeholders on Hawaiian Homelands, in the process of:

- **Planning Hui Meetings:** with Ahupua'a Associations & Reps
- **Workshops:** **3** In-person Beneficiary Workshops
- **Small Group Interviews:** *Up to 6* with knowledgeable stakeholders, such as Kūpuna, 'ōpio, & cultural practitioners
- **Technical Meetings:** **4** with state, county, natural resources agencies, etc.
- **Huaka'i:** Each Ahupua'a: tbd for Mauka & Makai locations

# PLANING MEETING TIMELINE

January 2024 - July 2024





# PLANING TIMELINE

July 2024 - December 2024

## WORKSHOP #3

What are the  
OPTIONS?

G70 Work on  
Preliminary Draft

DHHL Review  
Preliminary Draft

FINAL MCH-CRP  
PLAN

August

September

October

November

December

Jan-Feb

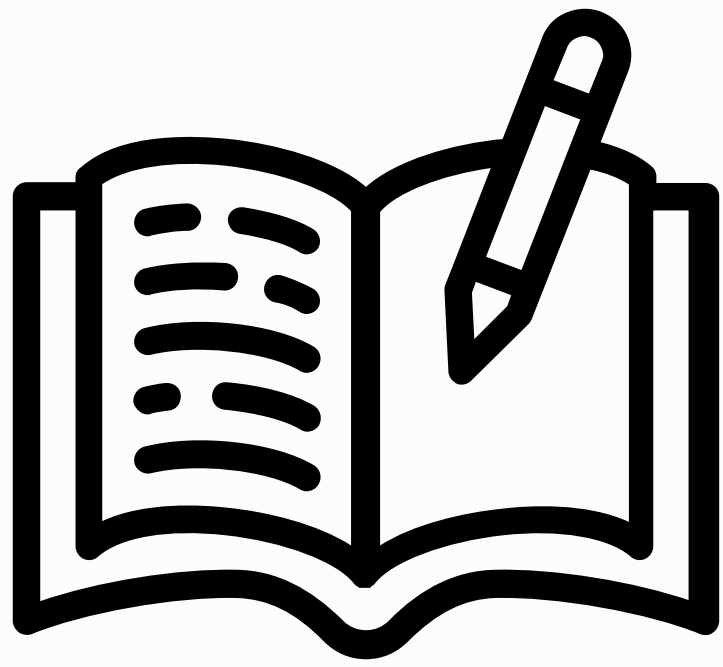
## WORKSHOP #4

What can be  
DONE?

## WORKSHOP #5

Beneficiary Review  
Preliminary Draft

20  
25



# ACTIVITY

**In your Ahupua'a groups,**

1. Discuss questions, and write down your thoughts and discussions
2. Assign 1 member (to talk on behalf of your group) to present your group's thoughts and mana'o.



# WHAT IS THE PILIKIA OR HIHIA?

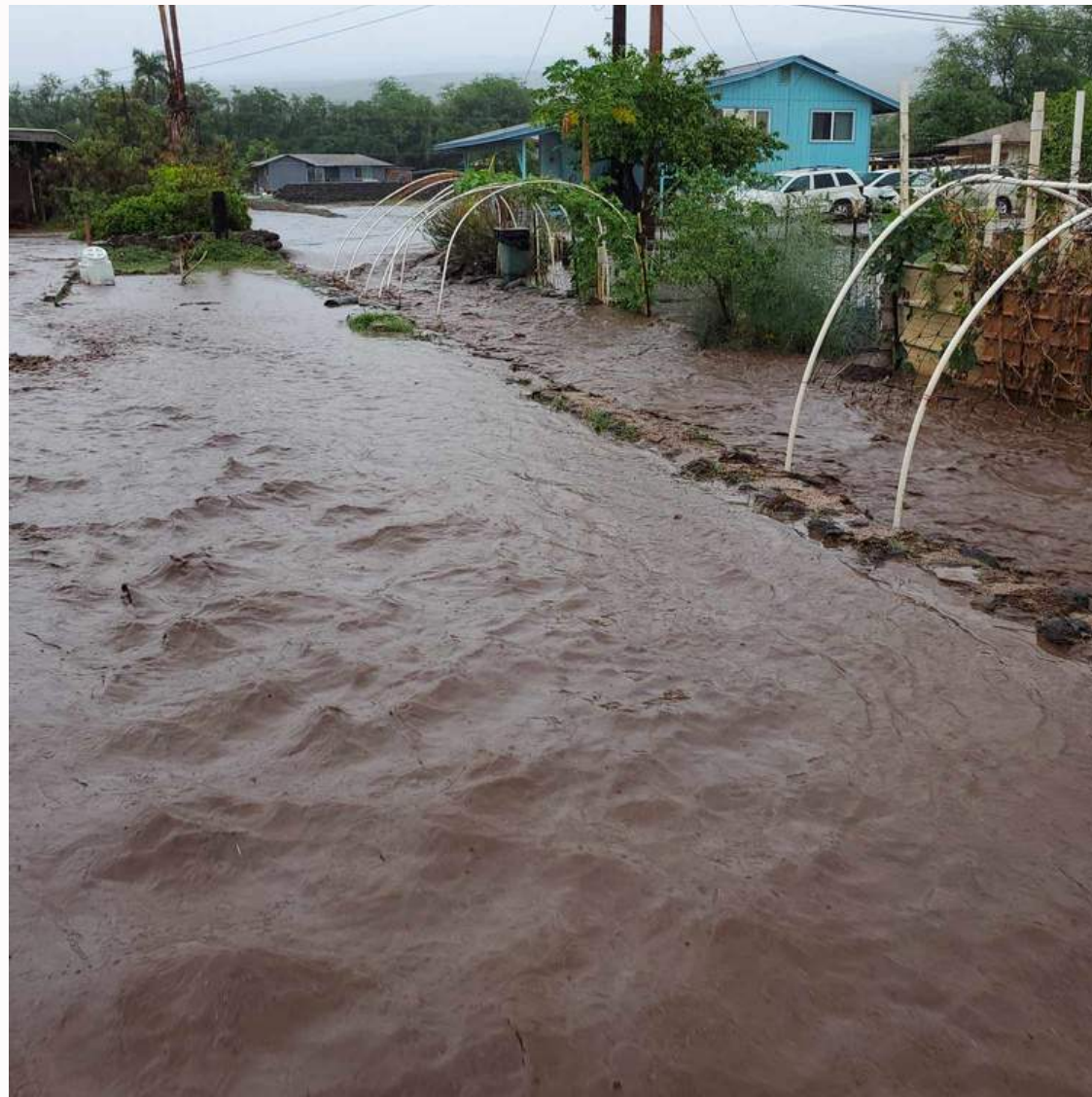
PROBLEM / HAZARD / RISKS / DANGER / THREAT / ISSUE

KALAMA'ULA



Wildfire

KAPA'AKEA



Flooding

KAMILOLOA - ONE ALI'I



Shoreline Erosion



# WHAT IS A PILIKIA OR HIHIA IN YOUR AHUPUA'A?

Circle your Ahupua'a

KALAMA'ULA

KAPA'AKEA

KAMILOLOA - ONE ALI'I

PROBLEM/ HAZARD/ RISKS / DANGER / THREAT /  
ISSUE

List out problems and hazards for your ahupua'a:

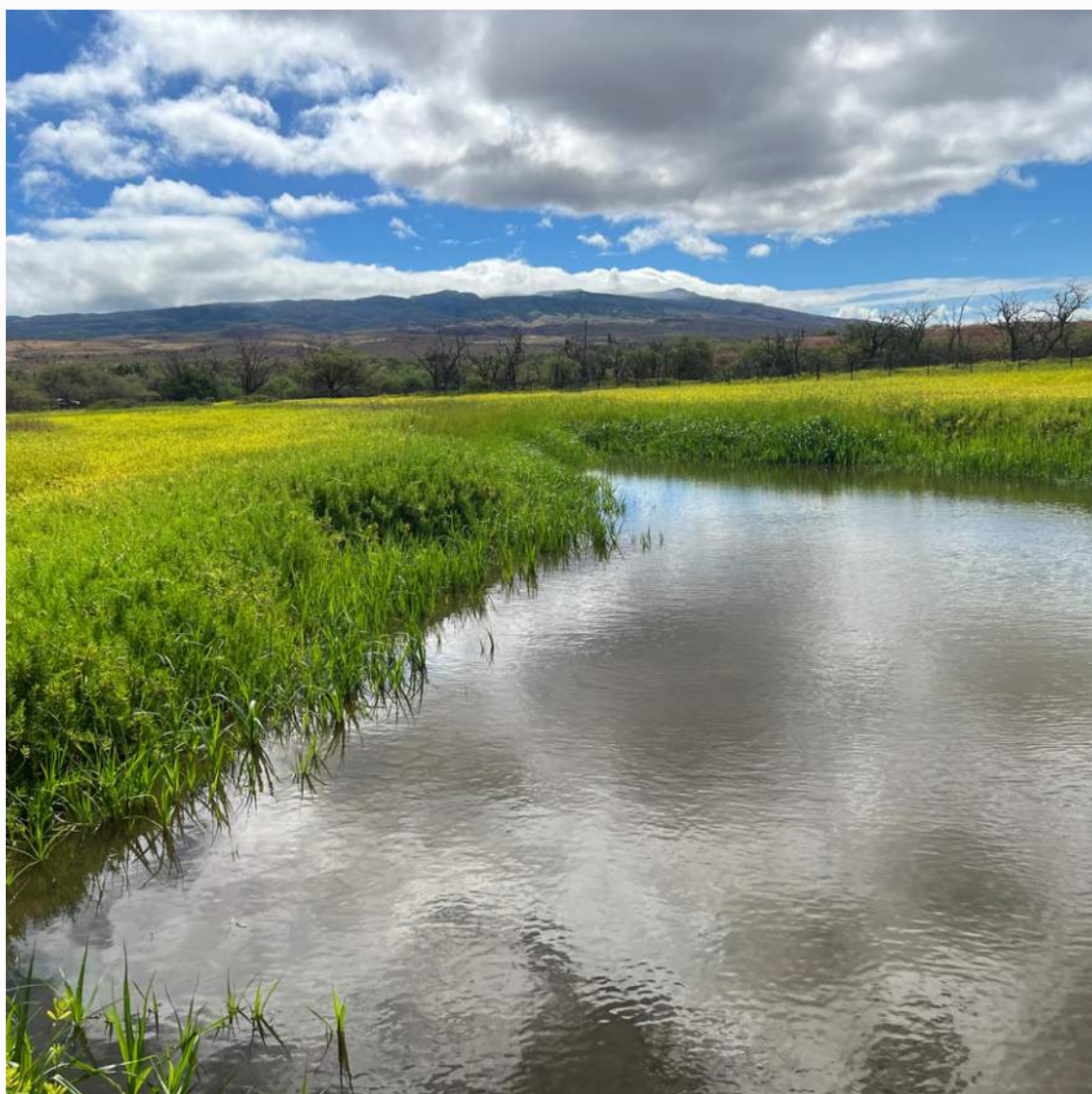




# WHAT ARE SOME MANAWA?

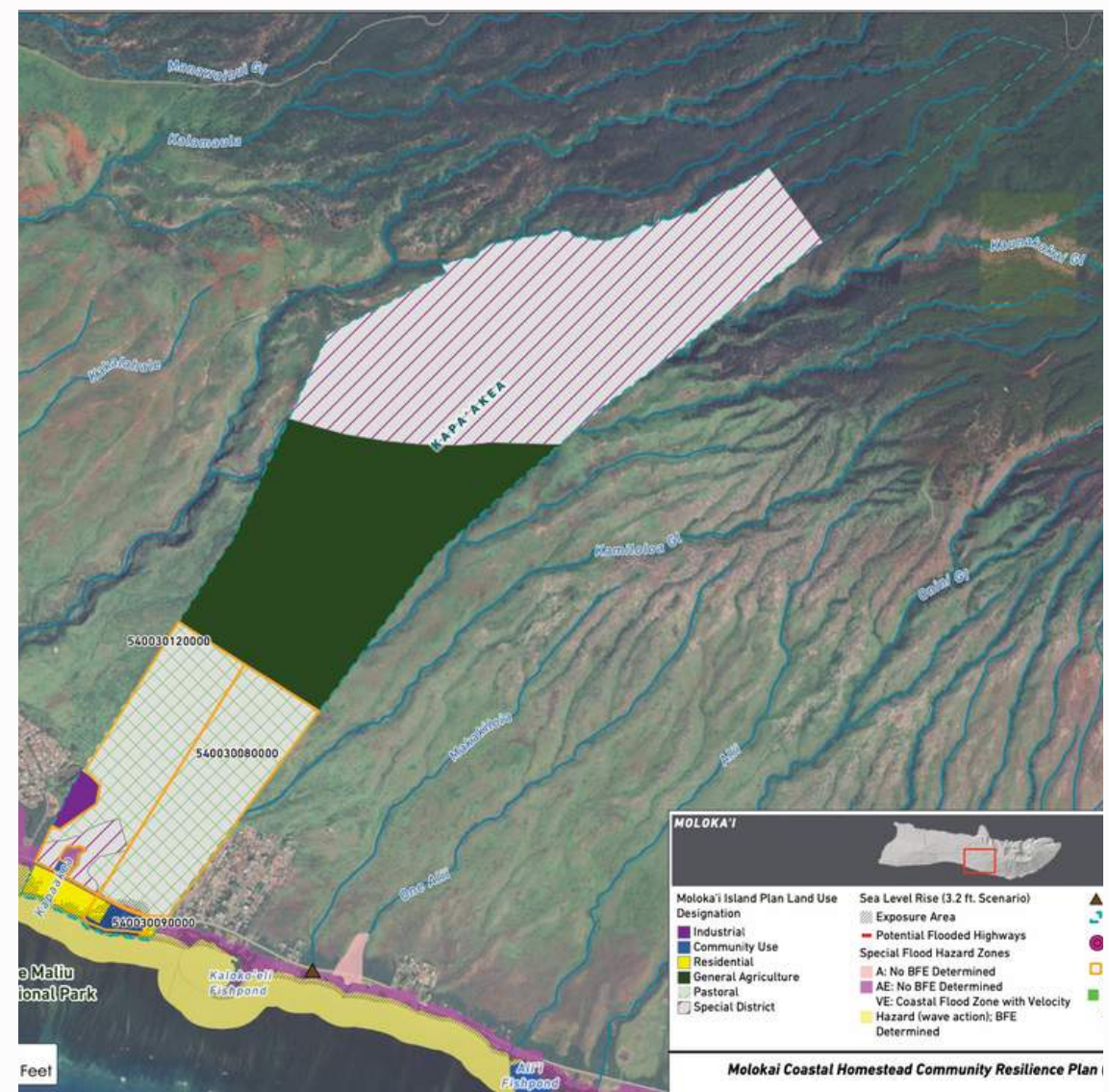
## OPPORTUNITIES / POSSIBILITIES

KALAMA'ULA



Ohi'apilo Wetland Restoration

KAPA'AKEA



Mauka Restoration

KAMILOLOA - ONE ALI'I



Limu Farming



# WHAT ARE SOME MANAWA IN YOUR AHUPUA'A?

**Circle your Ahupua'a**

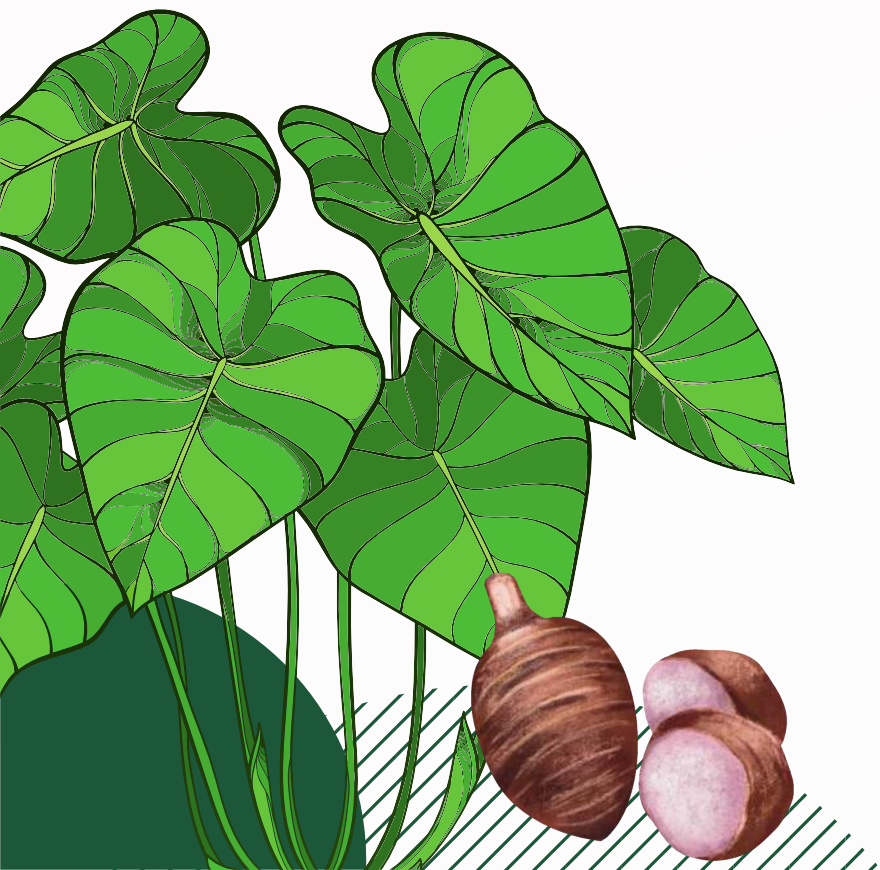
## OPPORTUNITIES / OPTIONS / POSSIBILITIES

List out opportunities for your ahupua'a:

KALAMA'ULA

KAPA'AKEA

KAMILOLOA - ONE ALI'I





# WHAT ARE SOME WAIWAI?

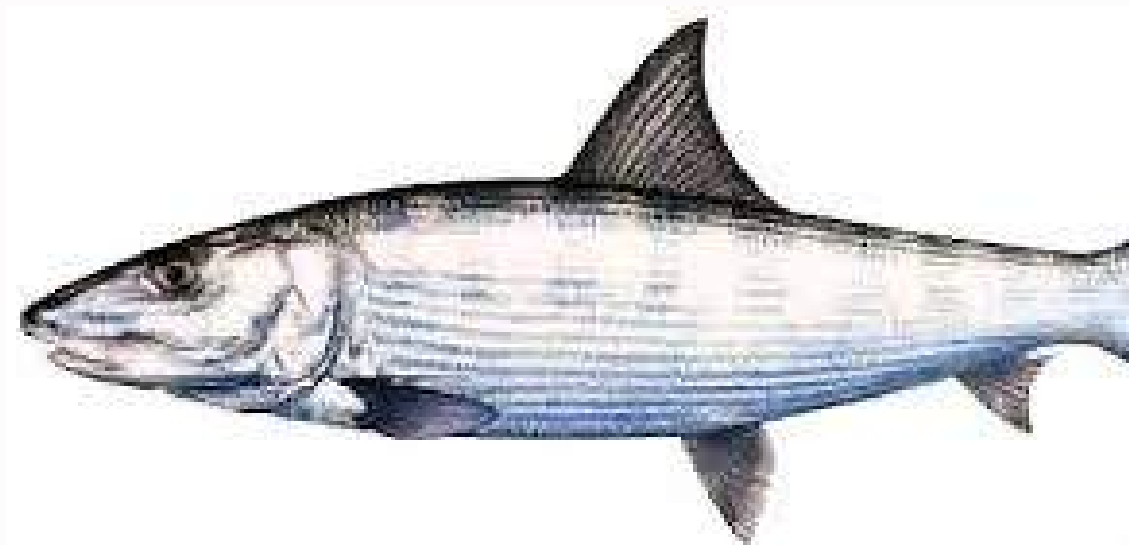
BENEFITS / STRENGTHS / ADVANTAGE / VALUE / ASSETS

KALAMA'ULA



Kapu'āiwa Grove/Kiowea Park

KAPA'AKEA



Kahakai: Marine Structure/Life

KAMILOLOA - ONE ALI'I



Ali'i Fishpond (Ka Honua Momona)



# WHAT ARE SOME WAIWAI IN YOUR AHUPUA'A?

Circle your Ahupua'a

KALAMA'ULA

KAPA'AKEA

KAMILOLOA - ONE ALI'I

ASSETS / BENEFIT / STRENGTHS /

ADVANTAGE / VALUE

List out assets for your ahupua'a:







# MANA'O NEEDED PLEASE

## Beneficiary Engagement & (SOW)

- Kulana 'Oiwī Hālau 5-7pm
- Workshops
  - **Workshop #1: TODAY!**
  - **Workshop #2: June 20, 2024**
- **Upcoming Workshops:**
  - Workshops #3: August
  - Workshops #4: August
  - Last: January/February



# MAHALO !

ANY QUESTIONS OR CONCERNS?

**NANCY MCPHERSON - DHHL**

✉ [nancy.m.mcpherson@hawaii.gov](mailto:nancy.m.mcpherson@hawaii.gov)

**SUST'ĀINABLE MOLOKAI**

✉ [heather@sustainablemolokai.org](mailto:heather@sustainablemolokai.org)

