



HAWAIIAN HOME LANDS

HAWAIIAN HOMES COMMISSION • DEPARTMENT OF HAWAIIAN HOME LANDS

DRAFT Moloka'i Coastal Homesteads Community Resilience Plan

January 7, 2026



Community Resilience Plan

- ❖ This project is funded through the National Fish and Wildlife Foundation (NFWF) National Coastal Resilience Fund (NCRF).
- ❖ This stage funds a Resiliency Plan with nature-based solutions that provide Community Resilience and Fish and Wildlife benefits.
- ❖ On completion of the MCH-CRP Plan, DHHL could apply for more funding for future phases





Relationship to DHHL Planning System

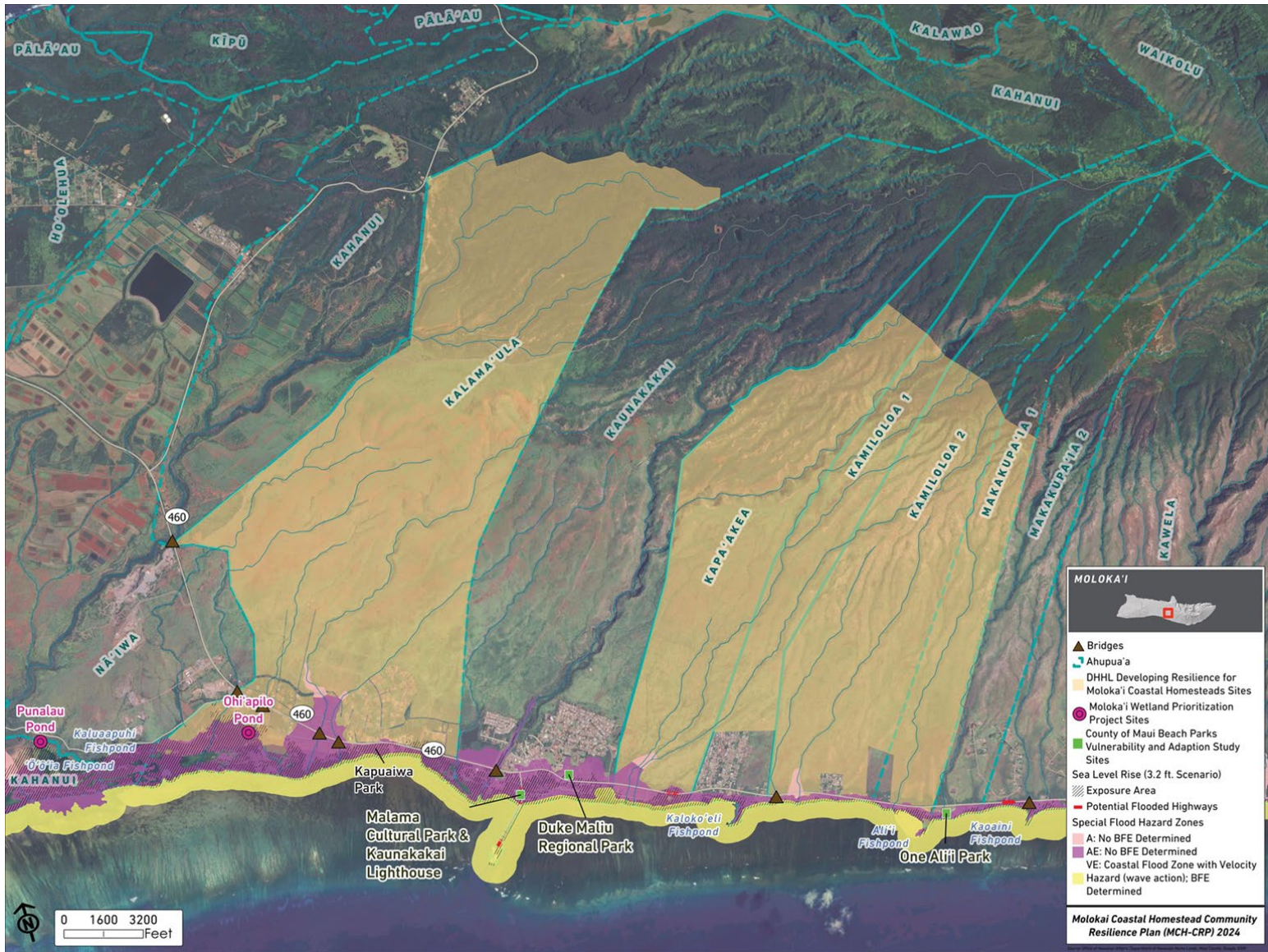
- **DHHL General Plan (2022)**
- **DHHL Moloka‘i Regional Plan (2020) – update soon**
- **Malama Cultural Park Special Area Plan (2022)**
- **South Molokai Shoreline Erosion Management Plan (2022)**
- **DHHL Moloka‘i Island Plan Update (2026 – 2027)**
- **DHHL Disaster & Climate Risk Reduction Plan (2026 – 2027)**



Planning Process

- ❖ Lessees were requesting assistance in dealing with coastal erosion & flooding
- ❖ Building on prior efforts like 2022 South Moloka'i Shoreline Erosion Management Plan & 2015 Coastal Resilience for DHHL Communities Practicum Report
- ❖ Technical analysis of homestead assets, hazards, & vulnerabilities
- ❖ Multiple meetings & workshops held with beneficiaries to discuss issues & explore mitigation options
- ❖ Consultation with technical experts
- ❖ Huaka'i with beneficiaries
- ❖ Five Resilience Goals identified to build resilience (36 total strategies)

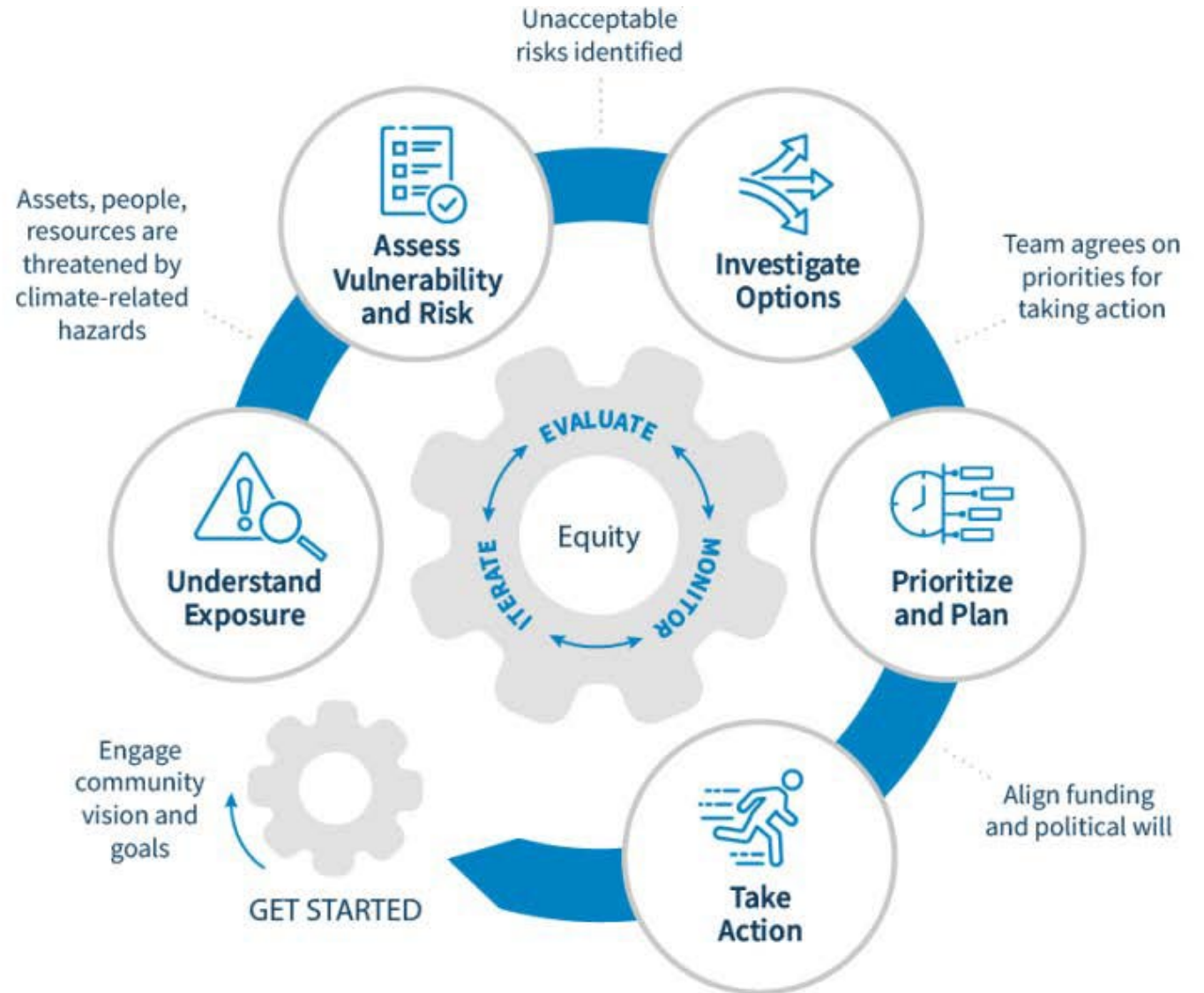
1/7/2026



Resilience Planning Framework

Grounding technical data in deep, generational knowledge of place, culture, and history, beneficiaries of the MCH-CRP planning process have:

1. Identified assets -- natural, cultural, social, & infrastructural resources that strengthen the community
2. Identified hazards -- environmental & climate-related threats facing homesteads
3. Assessed vulnerabilities -- understanding where people, places, & systems are most at risk
4. Determined risks — prioritizing which issues require the most urgent attention.
5. Identified and prioritized resilience strategies – including actionable implementation pathways





What Does Resilience Mean to You?

RESILIENCE

the capacity to withstand or to recover quickly from difficulties; toughness.

SURVIVAL Kūpa'a
ADAPT GRIT RESILIENCE
HO'OMAU HOLU PREVENTION
GO GETTUM

***Holu:** Springy, pliable, resilient, as a mattress; to sway, as palm fronds; to ripple, as waves; to play back and forth; bumpy, as an airplane ride.*

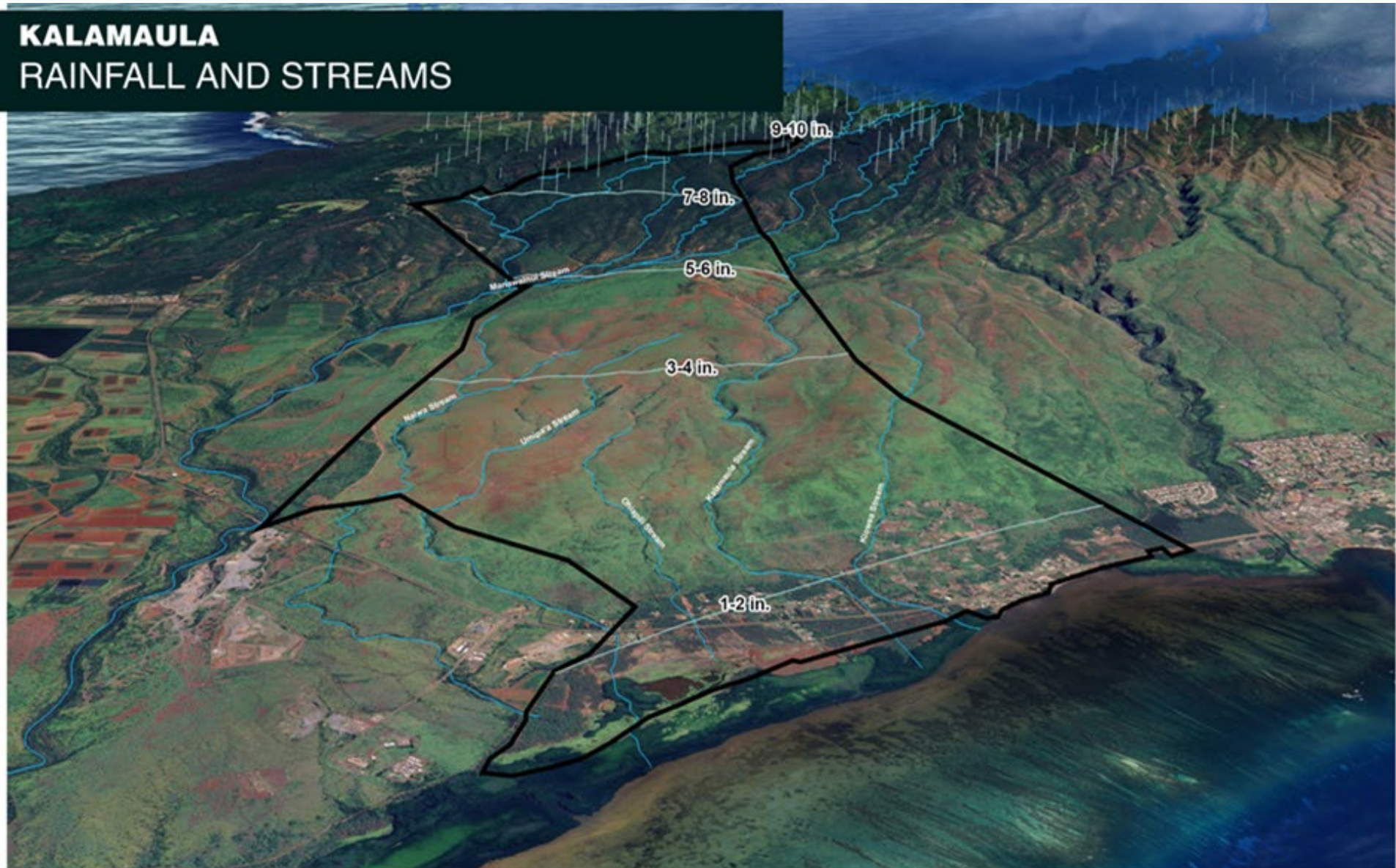
***Ho'omau:** Always, steady, constant, ever, unceasing, permanent, stationary, continual, perpetual; to continue, persevere, preserve, endure, last; preservation, continuation.*

***Kūpa'a:** Steadfast, firm, constant, immovable; loyal, faithful; determined; loyalty, allegiance, firmness.*



Technical Analysis

KALAMAU RAINFALL AND STREAMS



1/7/2026



Technical Analysis

KAPA'AKEA, KAMILOLOA, AND MAKAKUPA'IA RAINFALL AND STREAMS



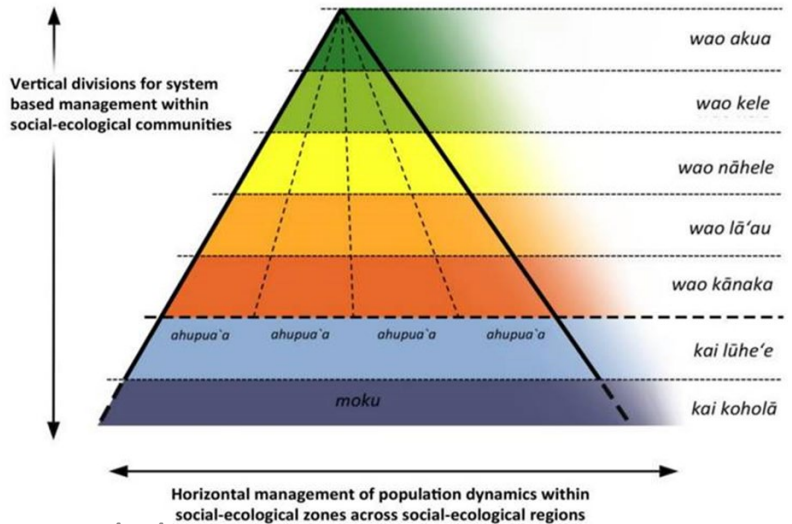
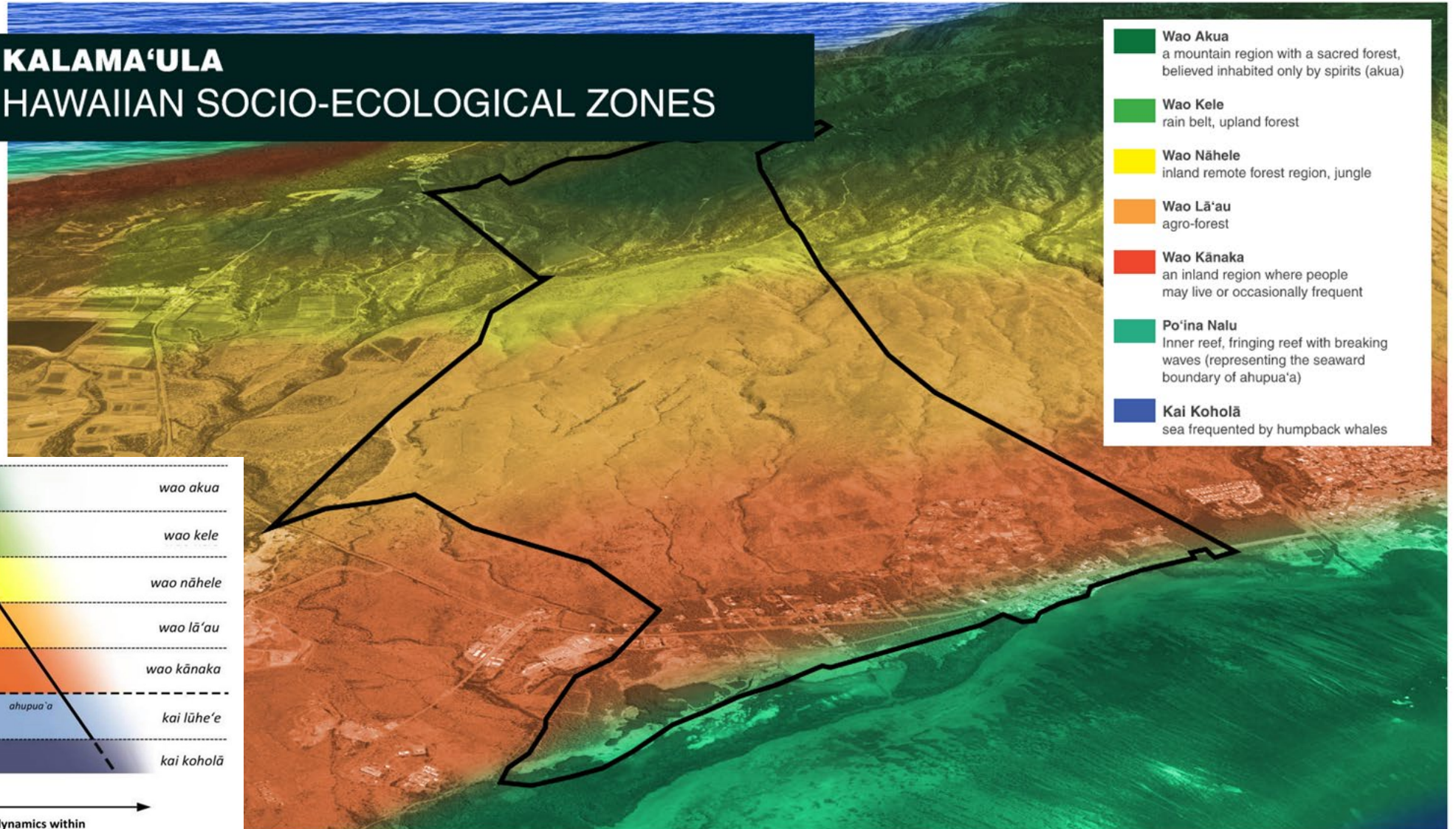
1/7/2026



Incorporating TEK

KALAMA'ULA

HAWAIIAN SOCIO-ECOLOGICAL ZONES

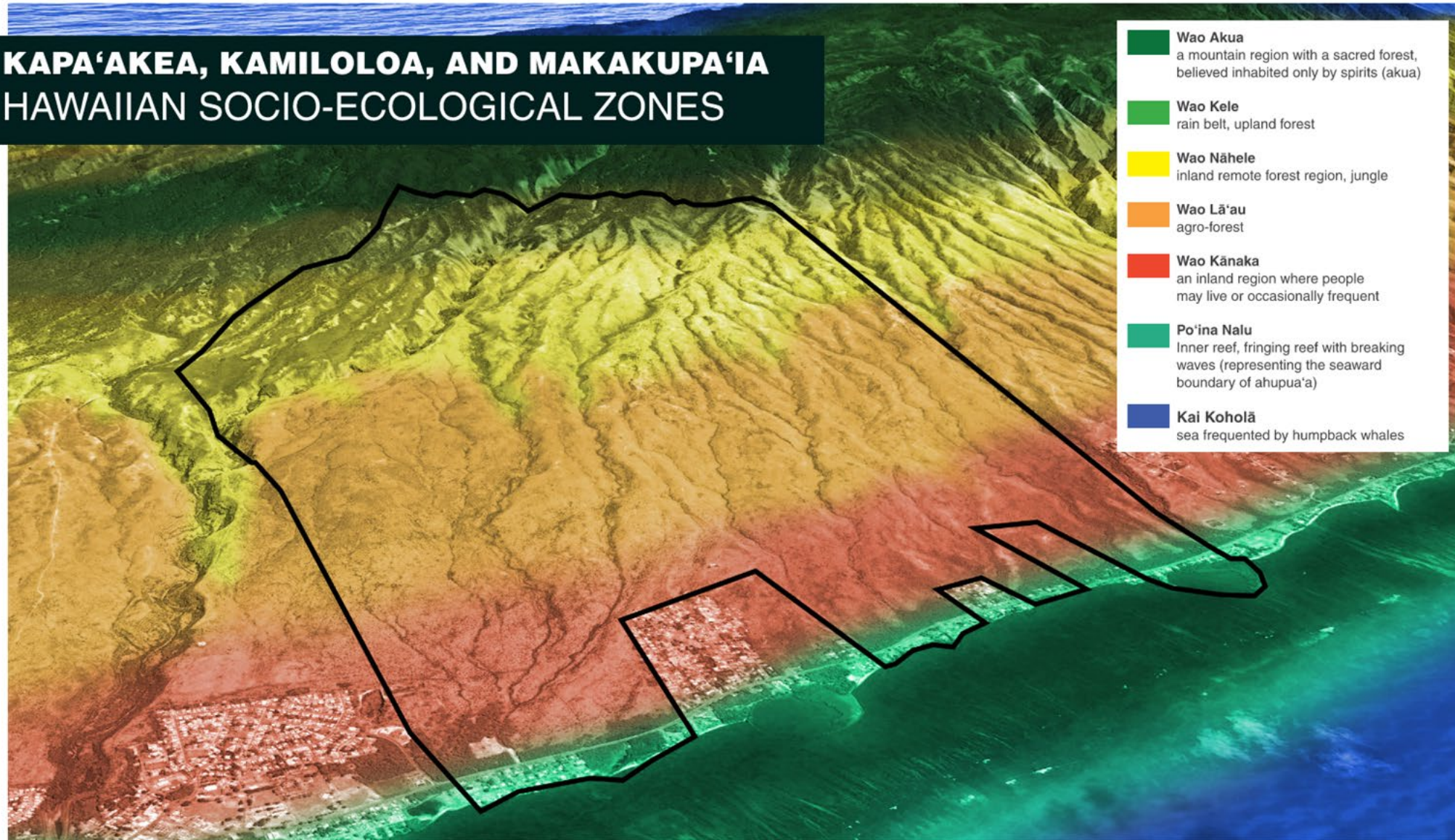


1/7/2026



Incorporating TEK

KAPA'AKEA, KAMILOLOA, AND MAKAKUPA'IA HAWAIIAN SOCIO-ECOLOGICAL ZONES





Outreach Summary

- 3.25.24 Initial meeting with Kalama'ula, Kapa'akea, and Kamiloloa One Ali'i Association presidents and representatives to introduce the MCH-CRP
- 4.22.24 DHHL HHC Meeting to Introduce MCH-CRP
- 4.25.24 1 on 1 interview/talk story session with Kapa'akea Oceanside resident
- 4.25.24 Planning Hui Meeting #1 (Planning Hui includes representatives from all three ahupua'a)
- 4.26.24 1 on 1 interview/talk story sessions with Kapa'akea shoreline residents
- 5.08.24 Planning Hui Meeting #2
- 5.13.24 Beneficiary Meeting #1: Introduction to MCH-CRP**
- 6.12.24 Kapa'akea Homestead Assoc. Meeting
- 6.17.24 MCH-CRP Planning Hui Meeting #3
- 6.18.24 Kalama'ula Homestead Assoc. Meeting
- 6.20.24 Beneficiary Meeting #2: What are the problems & opportunities?**





Outreach Summary Cont.

- 7.20.24 Planning Hui Meeting #4
- 8.08.24 Kalama'ula & Kamiloloa Huaka'i
- 8.08.24 Beneficiary Meeting #3:**
Explore resilience building options
- 8.26.24 Large Landowners & ROE/Lease Meeting
- 8.27.24 Molokai DHHL Staff
- 9.26.24 Expert Technical Advisor Meeting
- 10.19.24 Kalama'ula & Kamiloloa Huaka'i
- 11.13.24 Expert Meeting with DOT
- 12.02.24 Expert Meeting (Debra Kelly NRCS)
- 12.05.24 'Ohi'apilo Wetland Huaka'i with Beneficiaries
- 12.11.24 Expert Meeting (TNC)
- 12.18.24 Expert Meeting (DLNR Lance DeSilva)
- 01.14.25 Attend/Present at Kalama'ula Homestead Association Meeting
- 02.14.25 Huaka'i Mauka & Makai Kalama'ula
- 04.08.25 Kapa'akea & Kamiloloa Beneficiary Meeting #4**
- 04.16.25 Kalama'ula Beneficiary Meeting #4**
- 04.21.25 Hawaiian Homes Commission Meeting on Moloka'i – Informational Briefing
- 11.17.25 Hawaiian Homes Commission Meeting on Moloka'i – Summary Report
- 12.15.25 Homestead Board Meetings to Confirm Priority Projects



1/7/2026



Huaka'i



1/7/2026



Huaka'i



1/7/2026



Huaka'i



1/7/2026

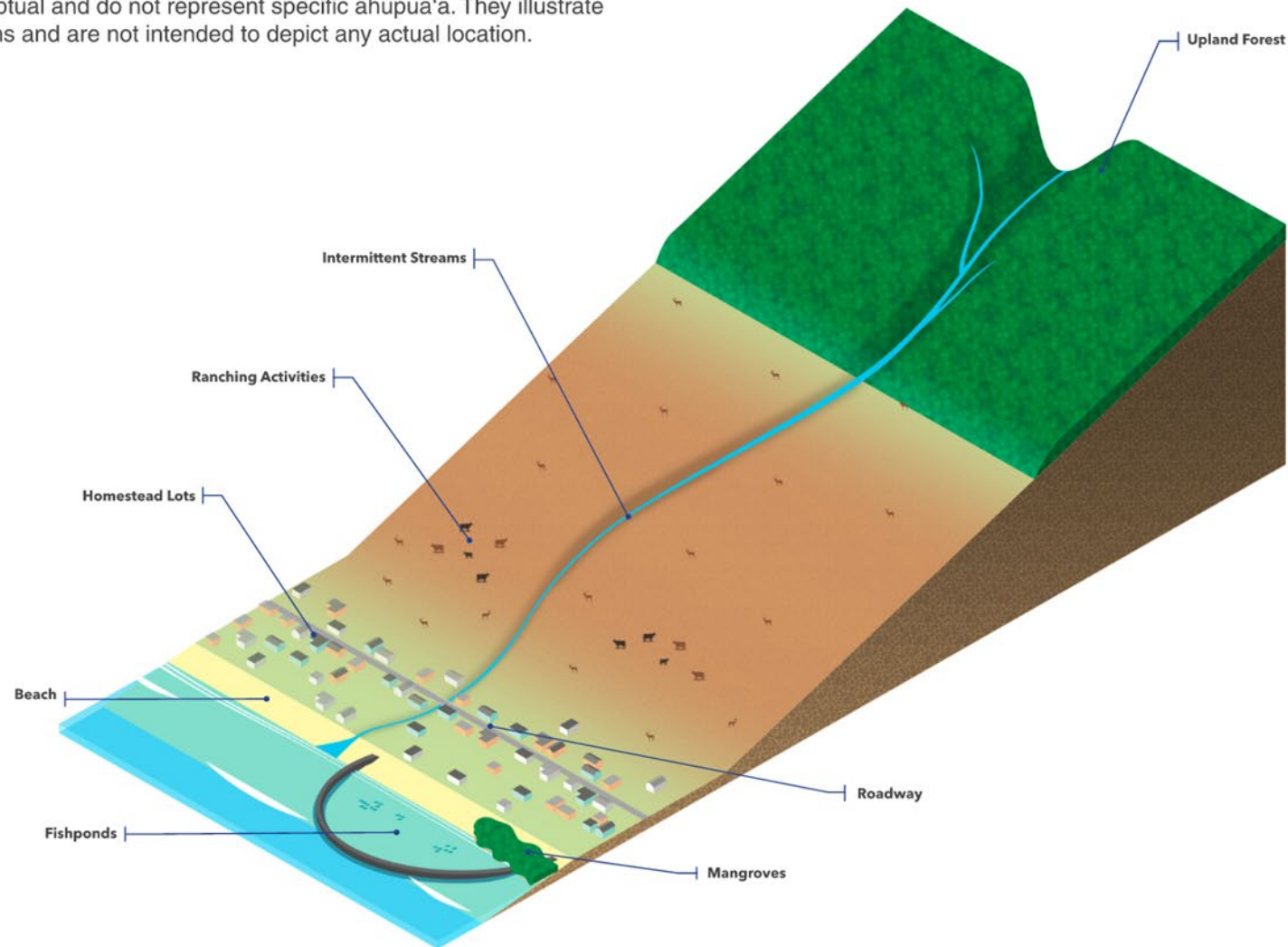
15



Conceptual Renderings

EXISTING CONDITIONS

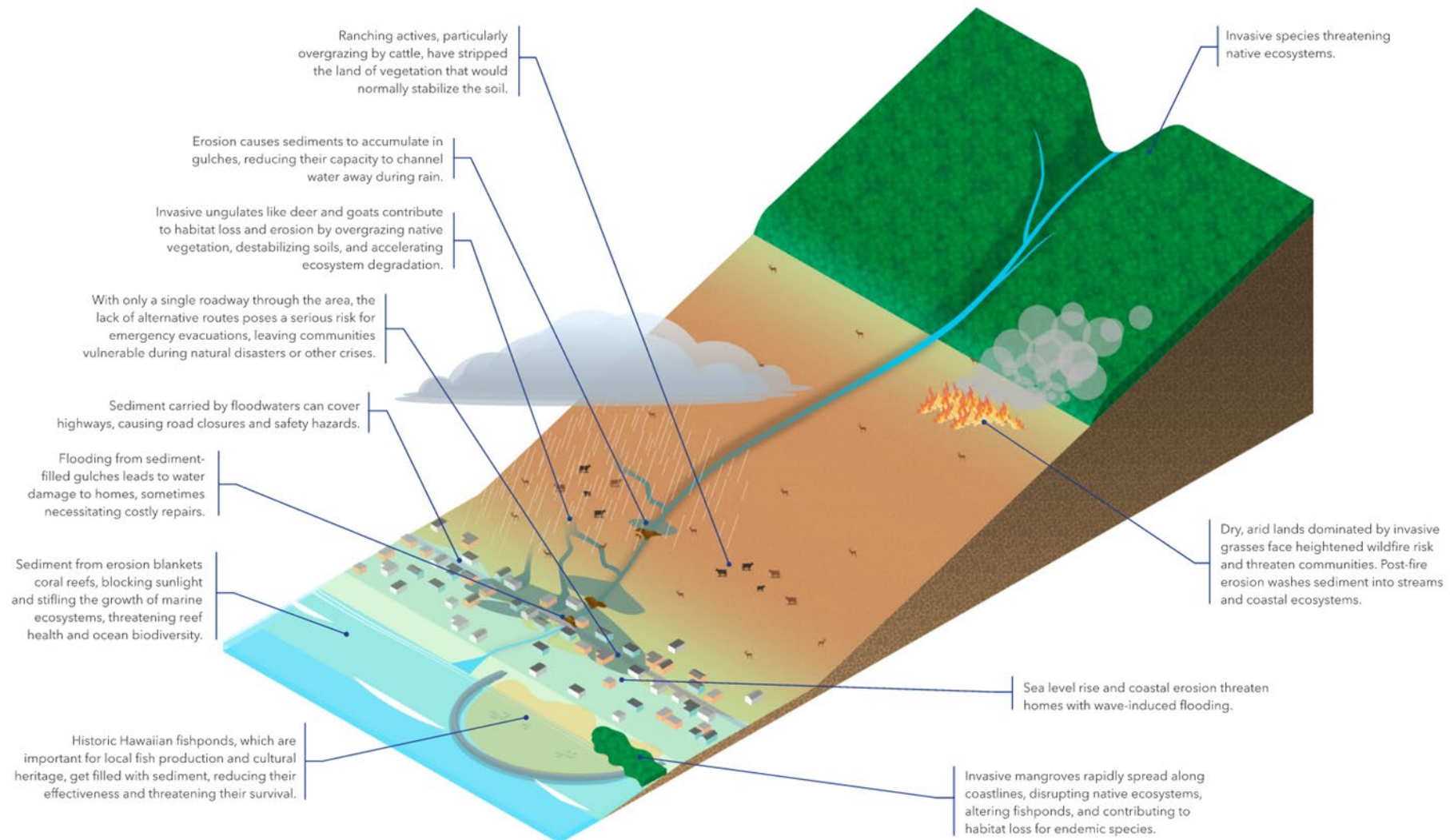
All figures are conceptual and do not represent specific ahupua'a. They illustrate generalized conditions and are not intended to depict any actual location.





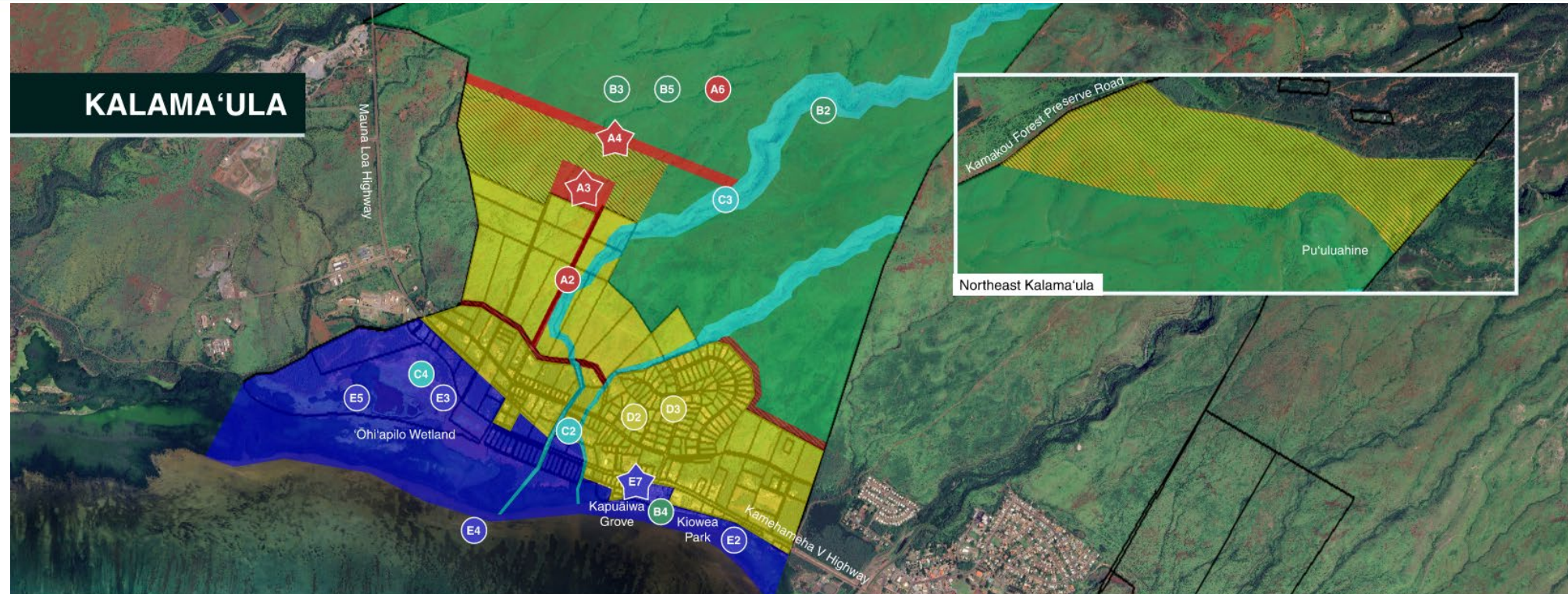
Conceptual Renderings

CHALLENGES





Priority Project Area Maps



A	Emergency Evacuation and Public Safety	B	Mauka Restoration	C	Water Flow Maintenance and Flood Prevention	D	Residential Hale Retrofits and Relocation	E	Makai Restoration
A1	Create a Pre-Disaster Emergency Response and Evacuation Plan*	B1	Develop Mauka Restoration and Maintenance Plan*	C1	Develop a Drainage Master Plan*	D1	Conduct Vulnerability Assessments Survey*	E1	Develop a Makai Restoration and Management Plan*
A2	Develop and Maintain Emergency Evacuation Routes	B2	Implement Kipuka Waihona Concept	C2	Green-Grey Drainage Improvements and Maintenance Program	D2	Adapt Structures and Systems to Better Withstand Coastal Hazards	E2	Implement Nature-Based Coastal Protection Projects
A3	Develop Resilience Hubs or Evacuation Sites	B3	Reduce Fuel Loads	C3	Watershed Participatory Mapping Workshops	D3	Maintain Home Ignition Zones	E3	Invasive Species Removal and Management
A4	Fire Break Construction and Maintenance	B4	Expand Plant and Food Nursery	C4	Restore Springs			E4	Marine Ecosystem Restoration
A5	Event Reporting and Documentation System*	B5	Feral Animal Management Program					E5	Restore Ōhi'apilo Wetland
A6	Install Wildfire Detection Cameras							E7	Maintain Kapuāiwa Coconut Grove and Kiowea Park

* A1, B1, plans, etc. are not located on the map because they are full ahupua'a focused plans

* Strategies are non-spatial in nature and represent actions that apply broadly across the entire ahupua'a or community.

1/7/2026



Priority Project Area Maps



A Emergency Evacuation and Public Safety	B Mauka Restoration	C Water Flow Maintenance and Flood Prevention	D Residential Hale Retrofits and Relocation	E Makai Restoration
<ul style="list-style-type: none">A1 Create a Pre-Disaster Emergency Response and Evacuation Plan*A2 Develop and Maintain Emergency Evacuation RoutesA3 Develop Resilience Hubs or Evacuation SitesA4 Fire Break Construction and MaintenanceA5 Event Reporting and Documentation System*A6 Install Wildfire Detection Cameras	<ul style="list-style-type: none">B1 Develop Mauka Restoration and Maintenance Plan*B2 Implement Kipuka Waihona ConceptB3 Reduce Fuel LoadsB4 Expand Plant and Food NurseryB5 Feral Animal Management Program	<ul style="list-style-type: none">C1 Develop a Drainage Master Plan*C2 Green-Grey Drainage Improvements and Maintenance ProgramC3 Watershed Participatory Mapping WorkshopsC4 Restore Springs	<ul style="list-style-type: none">D1 Conduct Vulnerability Assessments Survey*D2 Adapt Structures and Systems to Better Withstand Coastal HazardsD3 Maintain Home Ignition Zones	<ul style="list-style-type: none">E1 Develop a Makai Restoration and Management Plan*E2 Implement Nature-Based Coastal Protection ProjectsE3 Invasive Species Removal and ManagementE4 Marine Ecosystem RestorationE5 Restore Ohi'apilo WetlandE6 Maintain Kapuāiwa Coconut Grove and Kiowea ParkE7

1/7/2026

* A1, B1, plans, etc. are not located on the map because they are full ahupua'a focused plans

* Strategies are non-spatial in nature and represent actions that apply broadly across the entire ahupua'a or community.



Priority Project Area Maps



A Emergency Evacuation and Public Safety	B Mauka Restoration	C Water Flow Maintenance and Flood Prevention	D Residential Hale Retrofits and Relocation	E Makai Restoration
<ul style="list-style-type: none">A1 Create a Pre-Disaster Emergency Response and Evacuation Plan*A2 Develop and Maintain Emergency Evacuation RoutesA3 Develop Resilience Hubs or Evacuation SitesA4 Fire Break Construction and MaintenanceA5 Event Reporting and Documentation System*A6 Install Wildfire Detection Cameras	<ul style="list-style-type: none">B1 Develop Mauka Restoration and Maintenance Plan*B2 Implement Kipuka Waihoia ConceptB3 Reduce Fuel LoadsB4 Expand Plant and Food NurseryB5 Feral Animal Management Program	<ul style="list-style-type: none">C1 Develop a Drainage Master Plan*C2 Green-Grey Drainage Improvements and Maintenance ProgramC3 Watershed Participatory Mapping WorkshopsC4 Restore Springs	<ul style="list-style-type: none">D1 Conduct Vulnerability Assessments Survey*D2 Adapt Structures and Systems to Better Withstand Coastal HazardsD3 Maintain Home Ignition Zones	<ul style="list-style-type: none">E1 Develop a Makai Restoration and Management Plan*E2 Implement Nature-Based Coastal Protection ProjectsE3 Invasive Species Removal and ManagementE4 Marine Ecosystem RestorationE5 Restore Ohi'apilo WetlandE1 Maintain Kapuāiwa Coconut Grove and Kiowea Park

* A1, B1, plans, etc. are not located on the map because they are full ahupua'a focused plans
Moloka'i Coastal Homesteads Community Resilience Plan

* Strategies are non-spatial in nature and represent actions that apply broadly across the entire ahupua'a or community.

1/7/2026

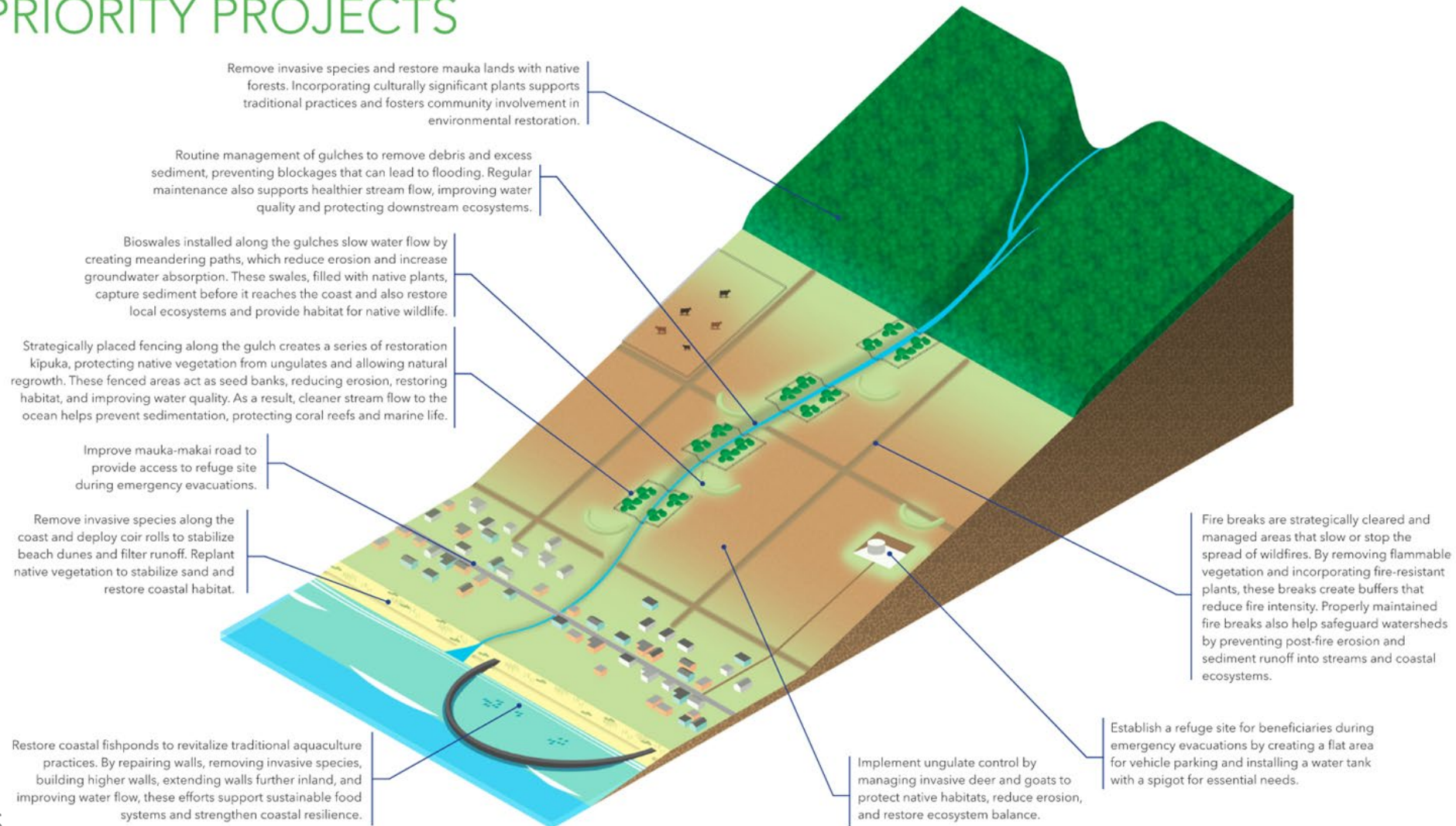
5-11

20



Conceptual - Priority Projects

EXAMPLES OF POTENTIAL PRIORITY PROJECTS





Resilience Strategy Implementation Matrix

Resilience Goals	Resilience Strategy/ Project Name	Tier 1: Site Assessment and Preliminary Design	Tier 2: Detailed Design and Permitting	Tier 3: Implementation	Kalama'ula Priority Project	Kapa'akea Priority Project	Kamiloloa Priority Project	Notes
B: Mauka Restoration	B1: Develop Mauka Restoration & Maintenance Plan	LiDAR and aerial mapping; TEK integration; AIS/biological studies; erosion and vegetation assessment; preliminary zone mapping; early fire management concepts; engineering studies	Draft and final mauka restoration master plan, Engineering for fencing/irrigation; species prescriptions; fire suppression design; phasing plan; historic preservation / biological reviews; workforce plan; cost estimates; monitoring protocols	B2 and B3	3	3	2	
	B2: Implement Kipuka Waihona Concept	B1*	Land dispositions, permits and approvals; workforce development	Procure equipment and materials; invasive species removal; fencing installation; native planting; erosion control; micro-reservoirs; workforce employment; monitoring; education				*B1 fulfills B2 Tier 1
	B3: Reduce Fuel Loads	B1*	Land dispositions, permits and approvals; workforce development	Procure equipment and materials; mechanical clearing; cultural/prescribed burns; native replanting; erosion control; workforce deployment; monitoring & adaptive management				*B1 fulfills B3 Tier 1
	B4: Expand Plant and Food Nursery	Assess existing Kalama'ula nursery; identify species needs; conceptual layout; site evaluation; workforce and training needs	Update land disposition; develop engineered expansion plans; finalize propagation program; environmental review; design training program; prepare construction documents; permits and approvals; workforce development	Construct nursery upgrades; increase plant production; launch training programs; run community workshops; maintain and adapt operations; support B2, C4, D3, E2, and E3 actions				
	B5: Feral Animal Management Program	Population mapping; impact assessment; TEK integration; conceptual strategies; access/safety assessment; community outreach; regulatory and workforce planning	Land dispositions, develop management plan; identify partners and incentives; fencing designs; environmental/cultural review; safety protocols; training curriculum; monitoring plan; detailed budget & phasing	Procure equipment and materials, selective culling / controlled hunting; fence construction; ongoing monitoring; workforce deployment				



Next Steps

- ❖ **Beneficiary Review of Draft**
 - **In Person – Open House (today)**
 - **Online (dhhl.planning@hawaii.gov)**
 - **Hard Copies at District Office**
- ❖ **Comments due by January 31**
- ❖ **Revise Draft based on beneficiary feedback and seek HHC Approval of Final MCH-CRP (Tentative February 2026)**
- ❖ **Seek funding for implementation in 2026 (NFWF / Act 96)**





Q&A and Comments

[dhhl.planning@hawaii.gov](mailto:dhdl.planning@hawaii.gov)



Mahalo

