

Site Assessment Highlights

- Existing Roadways
- State & County Conservation
- Streams
 - Perennial
 - Non-Perennial
- Slope Range
 - < 10% (Preferred)
 - 10 - 20% (Feasible)
 - > 20% (Too steep for some land uses)

Notes

- Slope less than 10% is preferred for Residential, Pastoral (grazing), Community Use, Commercial, and Industrial.
- Slope less than 15% is preferred for Subsistence, Supplemental and Community Agriculture.
- Slope up to 20% is feasible for all land uses above. Pastoral (ag uses) can go up to 30%.
- Slope greater than the above is too steep.
- Soil at the site is rated low for ag use.
- The site receives an average of 19 to 20 inches of rain annually, according to the rainfall data from University of Hawaii.
- Water capacity and availability to the site are uncertain.
- There is no county water main pipeline nearby.



Island Plan Update

Land Use Designations

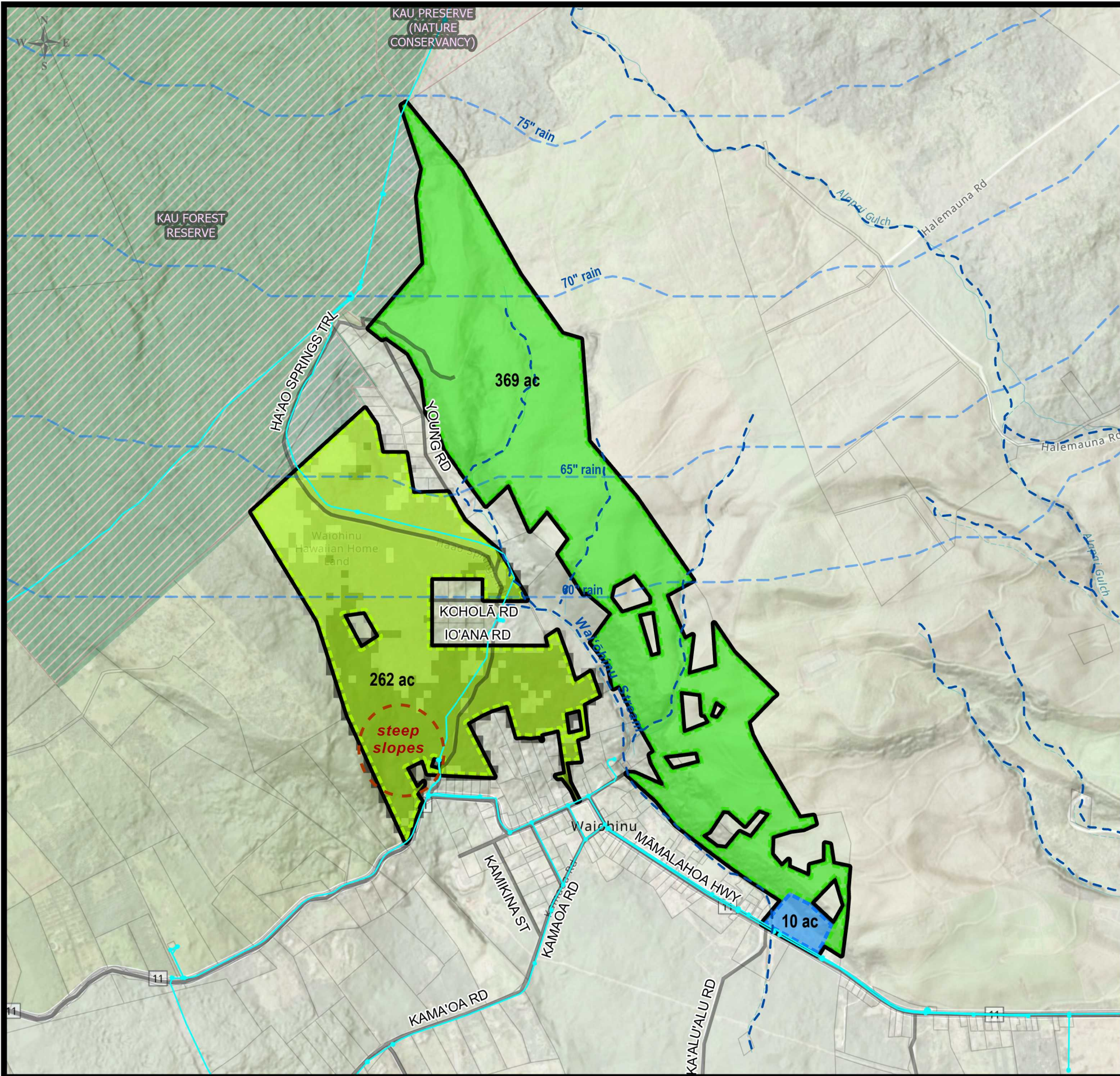
Homestead Uses

Residential	63.6
Subsistence Agriculture	0.0
Supplemental Agriculture	0.0
Pastoral	0.0
DHHL Kuleana	0.0

Non-Homestead Uses

Community Use	0.0
Community Agriculture	0.0
Commercial	0.0
Industrial	0.0
Renewable Energy	0.0
Stewardship	0.0
Conservation	0.0
Special District	2.0

Approximate Total Acres
± 65.6



Site Assessment Highlights

- Existing Roadways
- County Water Main
- Annual Rainfall > 60 Inches
- State & County Conservation
- Streams
 - Perennial
 - Non-Perennial
- Slope Range
 - < 10% (Preferred)
 - 10 - 20% (Feasible)
 - > 20% (Too steep for some land uses)

Notes

- Additional land will be transferred from DLNR and it will be 40-ac Supplemental Agriculture lots.
- Slope less than 10% is preferred for Residential, Pastoral (grazing), Community Use, Commercial, and Industrial.
- Slope less than 15% is preferred for Subsistence, Supplemental and Community Agriculture.
- Slope up to 20% is feasible for all land uses above. Pastoral (ag uses) can go up to 30%.
- Slope greater than the above is too steep.
- Water availability and supply to the site are uncertain.
- The southeastern portion of the site, north of Ha'ao Springs Trail, has some steep slopes.
- The soil at the site is rated low for ag use (*The rating may be based on common plants on the mainland US.)



Island Plan Update

Land Use Designations

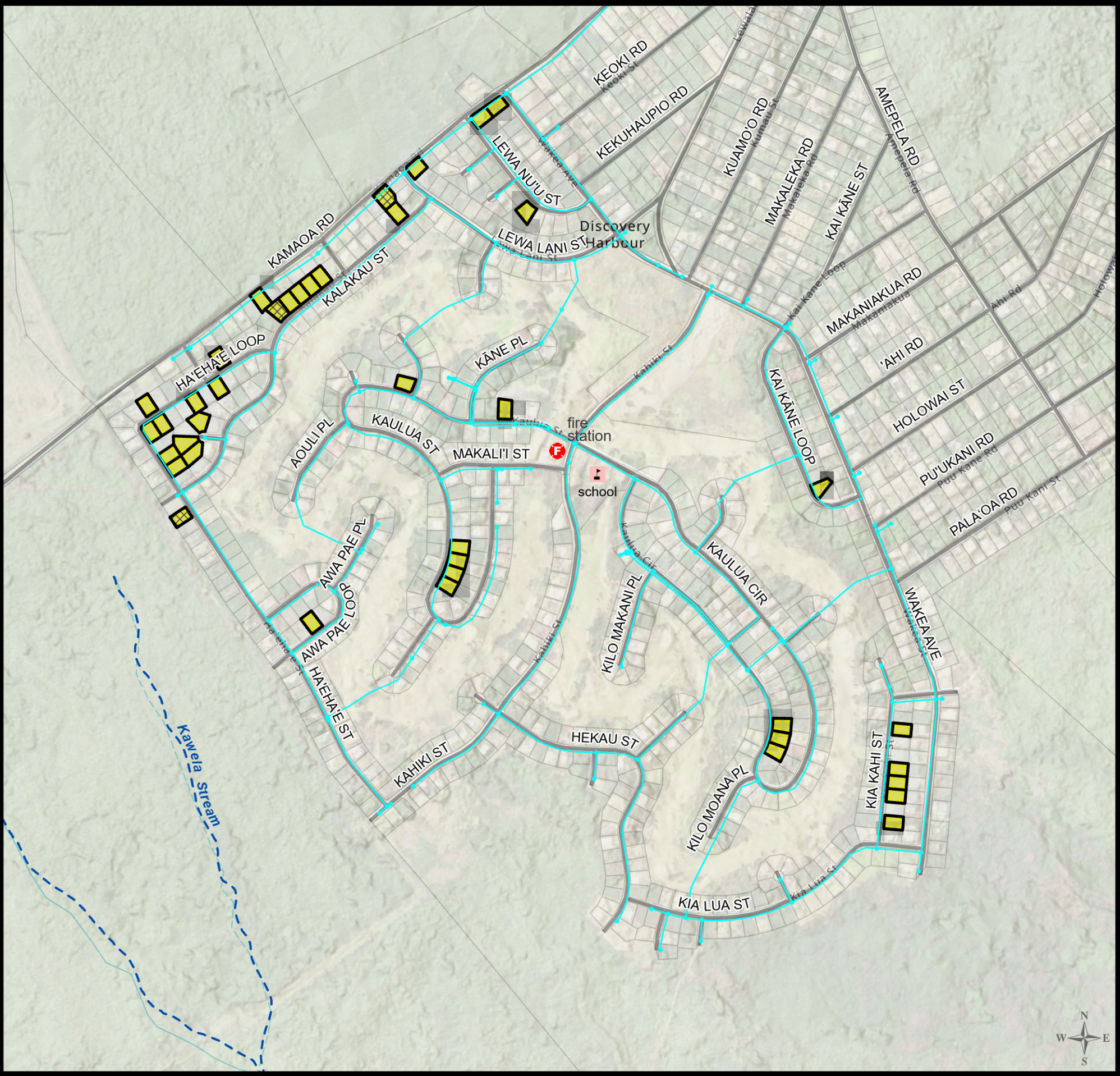
Homestead Uses

Residential	0.0
Subsistence Agriculture	261.9
Supplemental Agriculture	369.2
Pastoral	0.0
DHHL Kuleana	0.0

Non-Homestead Uses

Community Use	10.4
Community Agriculture	0.0
Commercial	0.0
Industrial	0.0
Renewable Energy	0.0
Stewardship	0.0
Conservation	0.0
Special District	0.0

Approximate Total Acres
± 641.5



Site Assessment Highlights

- Existing Roadways
- County Water Main
- Streams
 - Perennial
 - Non-Perennial
- Slope Range
 - < 10% (Preferred)
 - 10 - 20% (Feasible)
 - > 20% (Too steep for some land uses)

Notes

- The site is flat.
- The site has already been developed for residential use.
- The county water is readily available.

Island Plan Update

Land Use Designations

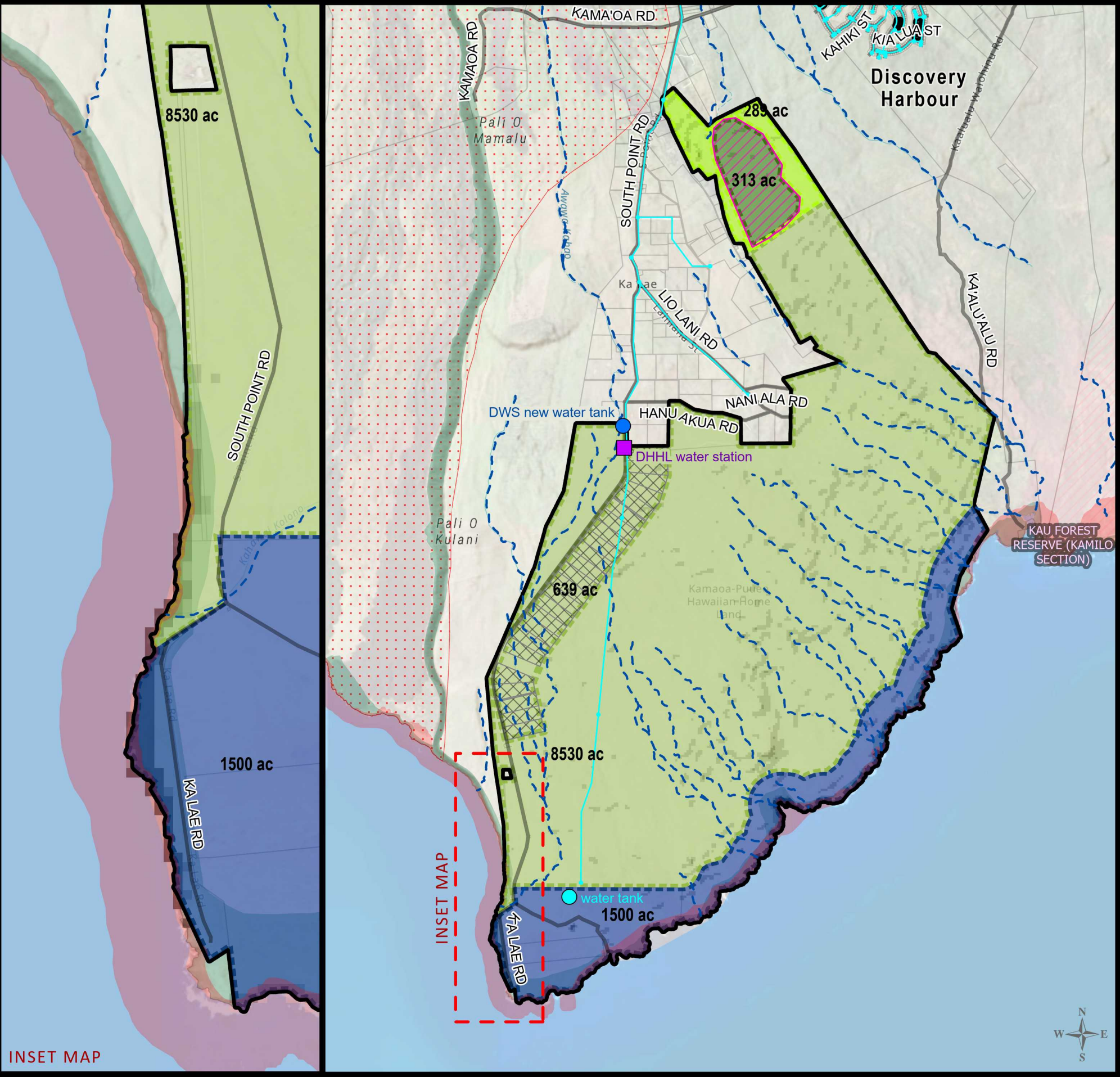
Homestead Uses

Residential	13.2
Subsistence Agriculture	0.0
Supplemental Agriculture	0.0
Pastoral	0.0
DHHL Kuleana	0.0

Non-Homestead Uses

Community Use	0.0
Community Agriculture	0.0
Commercial	0.0
Industrial	0.0
Renewable Energy	0.0
Stewardship	0.0
Conservation	0.0
Special District	0.0

Approximate Total Acres
± 13.2



Site Assessment Highlights

- Long Term Leases
 - Existing Roadways
 - County Water Main
 - Flood Prone Areas
 - Critical Habitats
 - High Risk Lava-Flow Areas
 - State & County Conservation
- Streams
- Perennial
 - Non-Perennial
- Slope Range
- < 10% (Preferred)
 - 10 - 20% (Feasible)
 - > 20% (Too steep for some land uses)

Notes

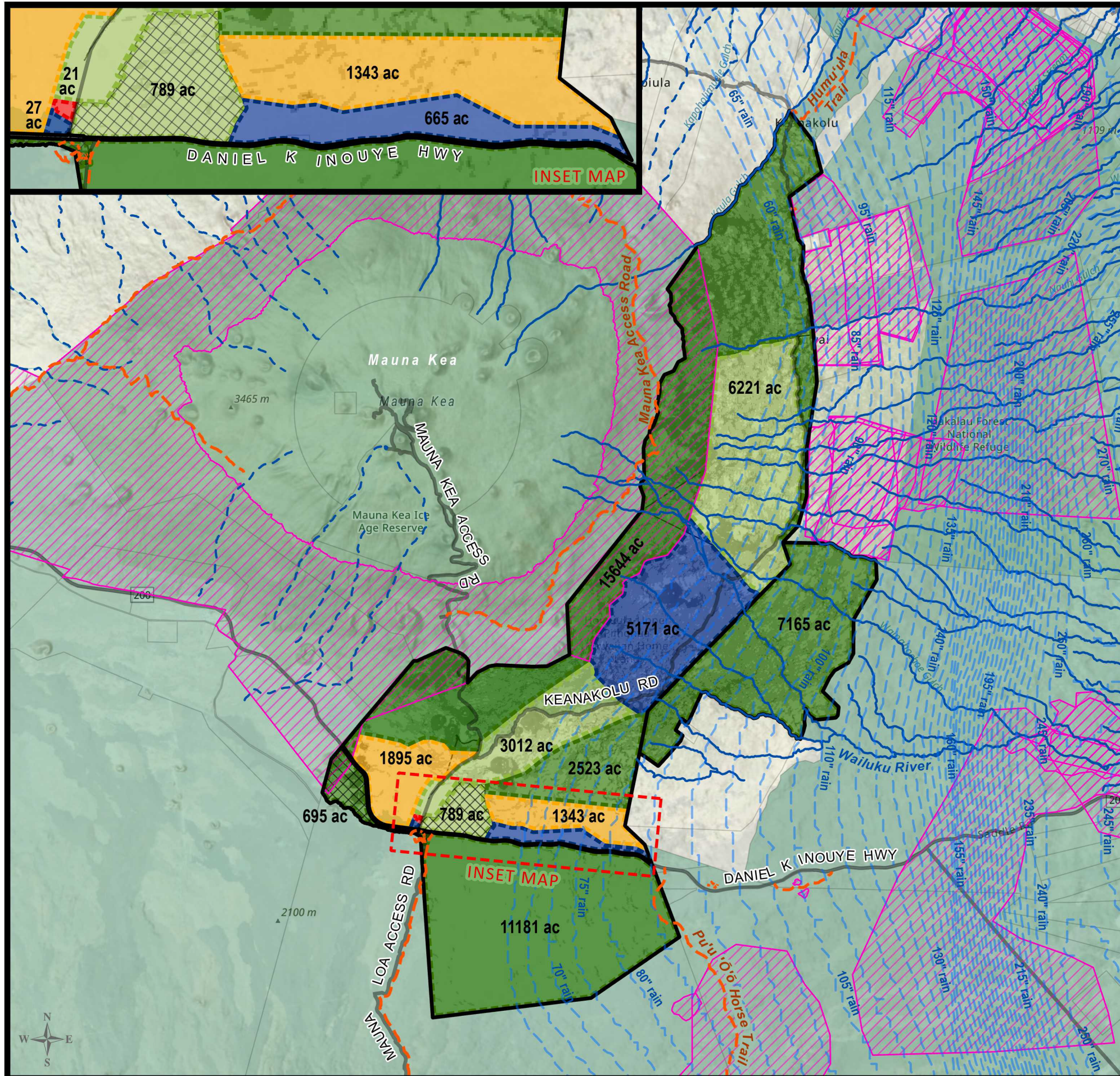
- The site is generally flat.
- The soil is rated low for ag uses.
- The site receives less than 60 inches of rain annually.
- The 639-ac Pastoral strip consists of the existing pastoral lots.
- The 313-ac Conservation land is an approximate habitat area for an endangered plant, *Cyperus fauriei* (a rare sedge species).
- The 1,500-ac Special District land includes the resource management area proposed in the South Point Resources Management Plan.

Island Plan Update

Land Use Designations

Homestead Uses		
Residential	0.0	
Subsistence Agriculture	289.2	
Supplemental Agriculture	0.0	
Pastoral	9,169.0	
DHHL Kuleana	0.0	
Non-Homestead Uses		
Community Use	0.0	
Community Agriculture	0.0	
Commercial	0.0	
Industrial	0.0	
Renewable Energy	0.0	
Stewardship	0.0	
Conservation	312.9	
Special District	1,500.2	

Approximate Total Acres
± 11,271.3

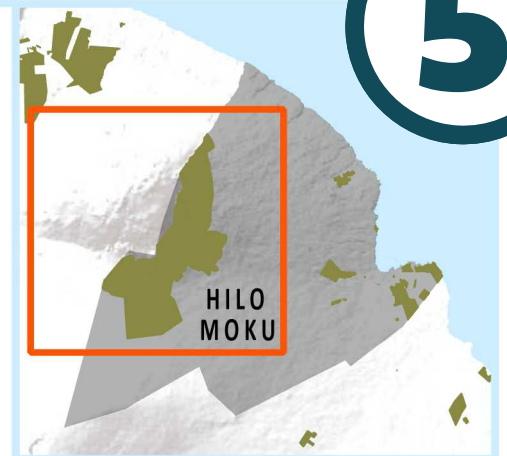


Site Assessment Highlights

- Long Term Leases
- Existing Roadways
- Nā Ala Hele Trails & Access
- Annual Rainfall > 60 Inches
- State & County Conservation
- Critical Habitats
- Streams
 - Perennial
 - Non-Perennial
- Slope Range
 - < 10% (Preferred)
 - 10 - 20% (Feasible)
 - > 20% (Too steep for some land uses)

Notes

- This map was drafted based on the 'Āina Mauna Legacy Program land use map. The program sees opportunities of self-sustainable rural-development homesteads along Daniel K Inouye Hwy (former Saddle Rd), including land for 100 to 200 homestead sites, land for alternative energy, and land for subsistence farming. Roads would remain unpaved and water would be catchment. Basic electrical and telecommunication infrastructure would be available.
- The site is partially within the State and County's conservation lands and also in the critical habitat areas for endangered Hawaiian honeycreepers.
- A few trails are near the site. Nā Ala Hele is the name of the State of Hawai'i's trail and access program. The program manages and maintains important public trails and access.
- Two existing leases are on the site: the 789-ac pastoral lease and the 695-ac military lease.
- The existing gorse shrub area (5,171 acres) and hard lava surfaces along Daniel K Inouye Hwy are identified as Special District.



Island Plan Update

Land Use Designations

Homestead Uses

Residential	0.0
Subsistence Agriculture	0.0
Supplemental Agriculture	0.0
Pastoral	10,021.2
DHHL Kuleana	3,238.1

Non-Homestead Uses

Community Use	0.0
Community Agriculture	0.0
Commercial	21.1
Industrial	0.0
Renewable Energy	0.0
Stewardship	0.0
Conservation	37,206.9
Special District	5,863.2

Approximate Total Acres
± 56,350.5