

'Ewa Beach Homestead Project Community Meeting

Wednesday, October 9, 2024

7:00 - 8:30 PM

'Ewa Beach Public Library | 91-950 North Rd



DEPARTMENT OF
HAWAIIAN HOME LANDS

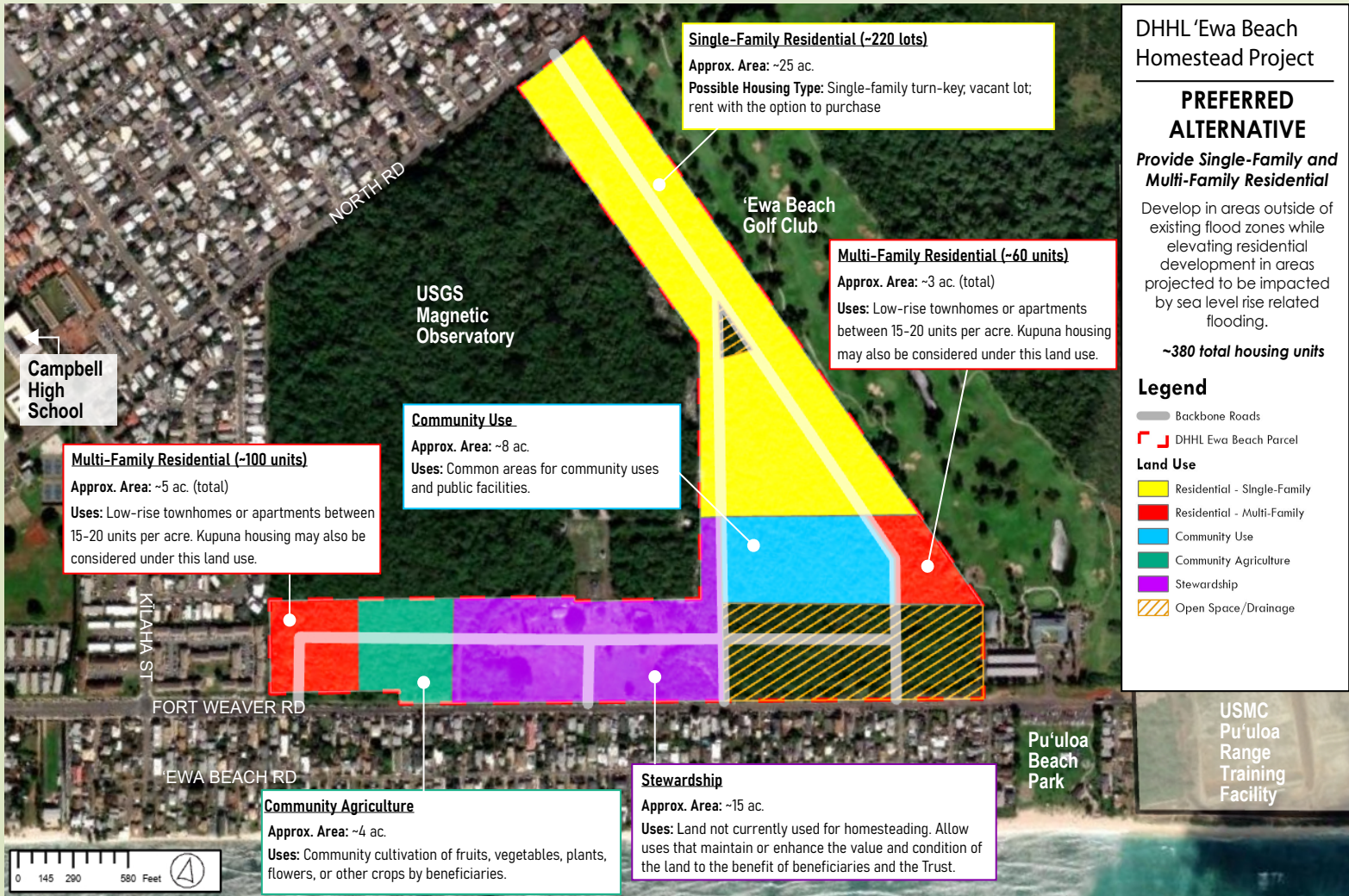
Project Overview

The State Department of Hawaiian Home Lands (DHHL) is developing a master plan and preparing an environmental assessment for approximately 80 acres of recently acquired land in 'Ewa Beach, O'ahu.

The 'Ewa Beach homestead community is primarily intended to provide residential homesteading opportunities to native Hawaiian beneficiaries on the O'ahu Residential Waiting List, which currently has the most beneficiaries waiting for homesteads. Consultation with beneficiaries and the 'Ewa Beach community, along with technical studies, has led to the development of a preferred alternative for the site that balances the need for housing with environmental considerations, infrastructure, and the surrounding community.

The Draft EA for the 'Ewa Beach Homestead Community will be available for public comment from September 24-October 23, 2024. Join us to review key findings from the EA and provide your input!

Project Area Map



To view the Draft EA and learn how to provide comments, visit the project website:

dttl.hawaii.gov/po/oahu/ewa-beach-homestead-project/

Questions? Please contact Melissa May: mmay@ssfm.com or 808-628-5861



SCAN ME!