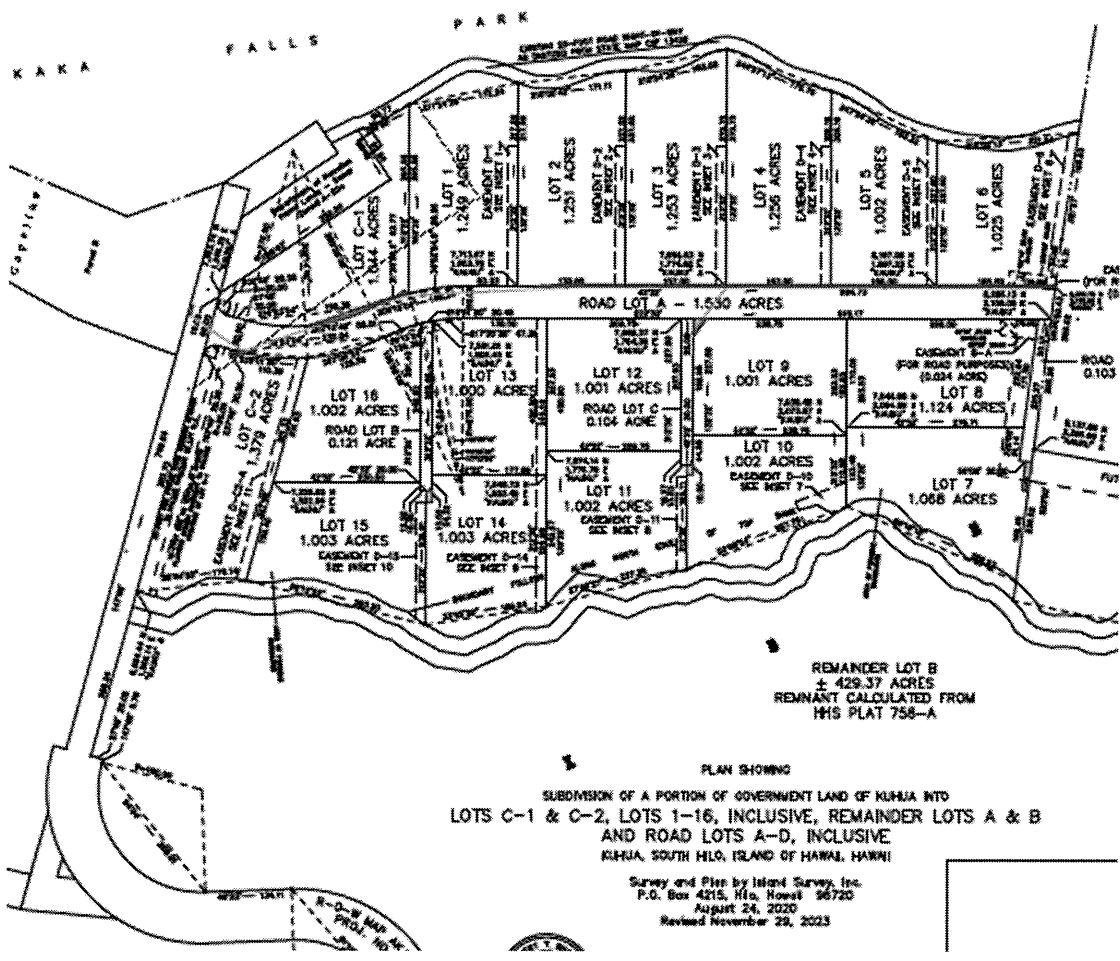


HONOMU SUBSISTENCE AG, PHASE 1 - LOT MATRIX				
TMK	LOT NO.	Lot Size (sq. ft.)	Address	Notes
(3) 2-8-011 :011	1	54,406		Easement D-1 (3,300 sq. ft.) for Drainage Purposes Easement E-2 (3.52 sq. ft.) for Electrical Purposes
(3) 2-8-011 :011	2	54,494		Easement D-2 (3,300 sq. ft.) for Drainage Purposes Easement E-3 (see note below)
(3) 2-8-011 :011	3	54,581		Easement D-3 (3,300 sq. ft.) for Drainage Purposes Easement E-3 (see note below)
(3) 2-8-011 :011	4	54,711		Easement D-4 (3,300 sq. ft.) for Drainage Purposes Easement E-3 (see note below)
(3) 2-8-011 :011	5	43,647		Easement D-5 (3,447 sq. ft.) for Drainage Purposes Easement E-3 (see note below)
(3) 2-8-011 :011	6	44,649		Easement 6-A (1,515 sq. ft.) for Road Purposes Easement D-6 (3,618 sq. ft.) for Drainage Purposes Easement E-3 (see note below)
(3) 2-8-011 :011	7	46,304		Easement E-4 (455 sq. ft.) for Electrical Purposes Future Road Reserve (2,720 sq. ft.)
(3) 2-8-011 :011	8	48,265		Easement 8-A (.042 acre) for Road Purposes Future Road Reserve (3,761 sq. ft.)
(3) 2-8-011 :011	9	43,604		Easement E-5 (247 sq. ft.)
(3) 2-8-011 :011	10	43,647		Easement D-10 (3,169 sq. ft.) for Drainage Purposes Easement E-6 (159 sq. ft.) for Electrical Purposes
(3) 2-8-011 :011	11	43,647		Easement D-11 (2,204 sq. ft.) for Drainage Purposes
(3) 2-8-011 :011	12	43,604		
(3) 2-8-011 :011	13	43,560		Easement D-14 (see note below)
(3) 2-8-011 :011	14	43,691		Easement D-14 (see note below) Easement E-7 (178 sq. ft.)
(3) 2-8-011 :011	15	43,691		Easement D-15 (2,784 sq. ft.)
(3) 2-8-011 :011	16	43,647		
(3) 2-8-011 :011	C-1	45,477		Easement E-2 (786 sq. ft.) Future Road Widening Setback (745 sq. ft.) Planting Screen Easement (589 sq. ft.)
(3) 2-8-011 :011	C-2	60,069		Easement E-1 (138 sq. ft.) Future Road Widening Setback (12,025 sq. ft.) Planting Screen Easement (4,037 sq. ft.) Easement D-C2-A (5,394 sq. ft.)
(3) 2-8-011 :011	ROAD LOT A	66,647		
(3) 2-8-011 :011	ROAD LOT B	5,271		
(3) 2-8-011 :011	ROAD LOT C	4,530		
(3) 2-8-011 :011	ROAD LOT D	5,358		

*Easement E-3 for Electrical Purposes affecting Lots 2-6, inclusive = 2,383 sq. ft.

*Easement D-14 for Drainage Purposes affecting Lots 13-14, inclusive = 6,843 sq. ft.



PLAN SHOWING
 SUBDIVISION OF A PORTION OF GOVERNMENT LAND OF KAKA INTO
 LOTS C-1 & C-2, LOTS 1-16, INCLUSIVE, REMAINDER LOTS A & B
 AND ROAD LOTS A-D, INCLUSIVE
 KAKA, SOUTH HILO, ISLAND OF HAWAII, HAWAII

Survey and Plats by Island Survey, Inc.
 P.O. Box 4215, Hilo, Hawaii 96720
 August 24, 2020
 Revised November 29, 2023