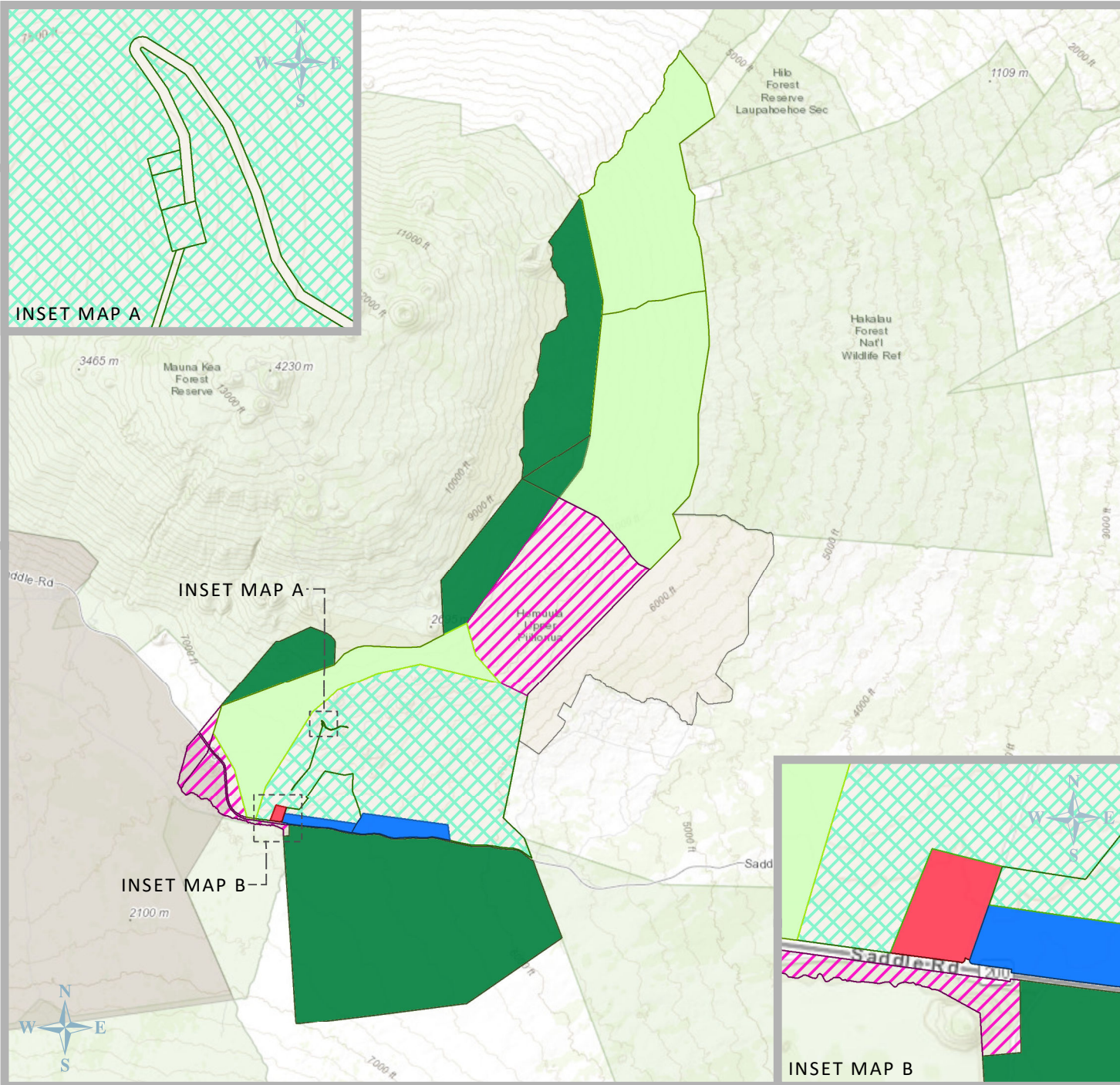


**2002 Island Plan
Land Use Designation**

Residential		0.0 ac
Supplemental Agriculture		0.0 ac
Subsistence Agriculture		0.0 ac
General Agriculture		7,078.0 ac
Pastoral		0.0 ac
Community Use		0.0 ac
Commercial		0.0 ac
Industrial		0.0 ac
Conservation		0.0 ac
Special District		0.0 ac
(no land use designated)		0.0 ac

Total: 7,078.0 acres

HUMU'ULA | HILO MOKU, HAWAI'I



**2002 Island Plan
Land Use Designation**

Residential		0.0 ac
Supplemental Agriculture		0.0 ac
Subsistence Agriculture		0.0 ac
General Agriculture		15,699 ac
Pastoral		9,023.1 ac
Community Use		601.0 ac
Commercial		47.9 ac
Industrial		0.0 ac
Conservation		17,641.1 ac
Special District		5,907.4 ac
(no land use designated)		0.0 ac

Total: 48,919.5 acres