

Site Assessment Highlights

- Long Term Leases
- Existing Roadways
- County Water Main
- Annual Rainfall > 60 Inches
- Lava Flows
- Lava Flow Buffers
- Flood Prone Areas
- State & County Conservation



Island Plan Update

Land Use Designations

Residential		209.8
Subsistence Agriculture		114.4
Supplemental Agriculture		705.3
Pastoral		0.0
Community Use		23.5
Community Agriculture		0.0
Commercial		5.3
Industrial		148.5
Renewable Energy		0.0
Stewardship		0.0
Conservation		35.7
Special District		90.4
DHHL Kuleana		483.0

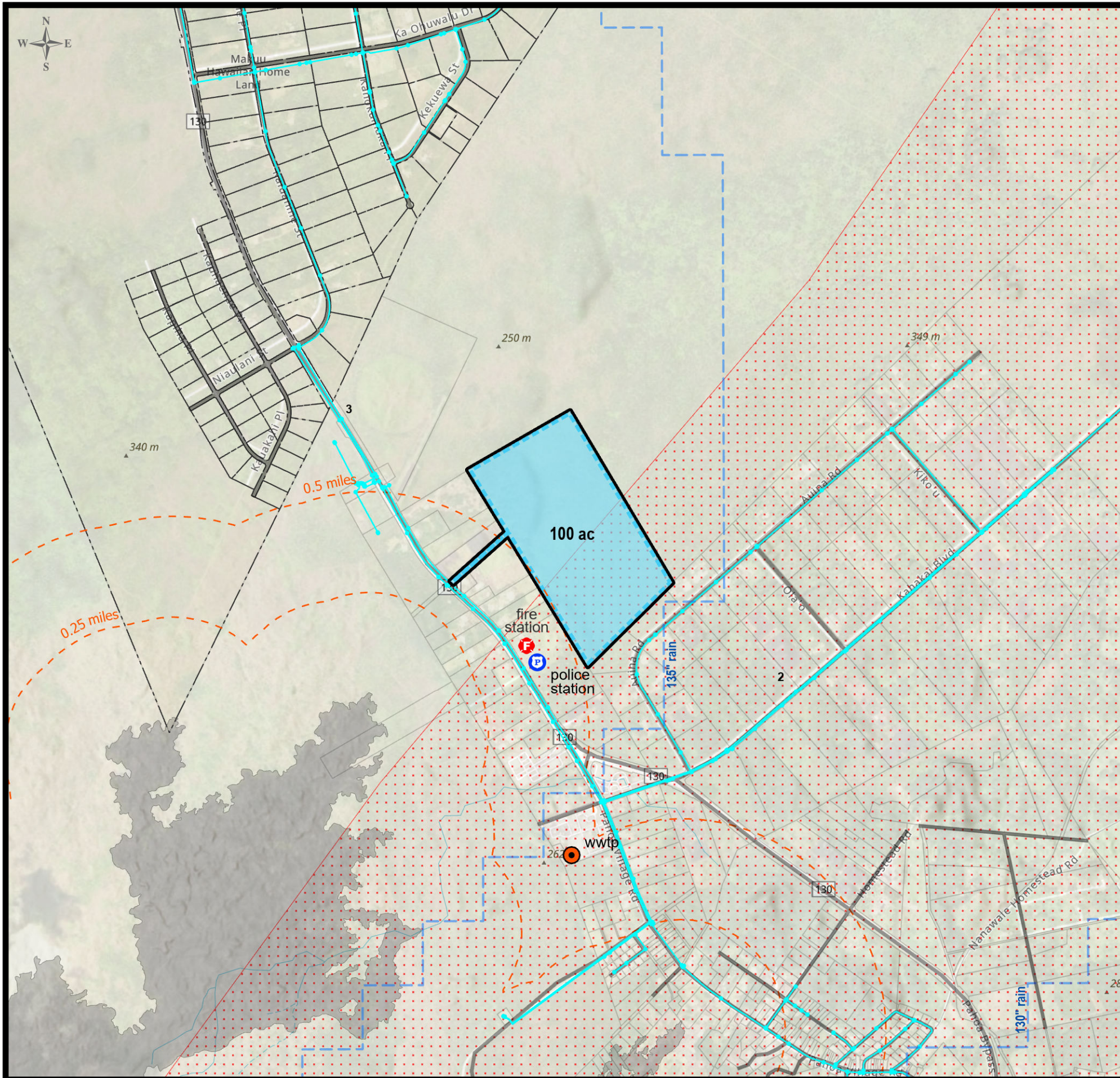
Land Use Options

Residential/ Subsistence Agriculture		216.7
Residential/ Community Use/ Commercial		59.9

Notes

- The site is largely flat.
- The makai property doesn't have water supply from the county.
- The portion of the makai property north of the remnant beach road is in the State's conservation land.
- The 2014-2015 lava flows have reached to the southern tip of the mauka property.
- Soil for both properties is rated low for ag use.
- The area in Inset Map shows a proposed Maku'u Master Plan.
- The restricted area in Inset Map is leased to the Federal Aviation Administration.

Approximate Total Acres
± 2,092.6



Site Assessment Highlights

- Existing Roadways
- County Water Main
- Annual Rainfall > 60 Inches
- Lava Flows
- Lava Flow Buffers
- High Risk Lava-Flow Areas



Island Plan Update

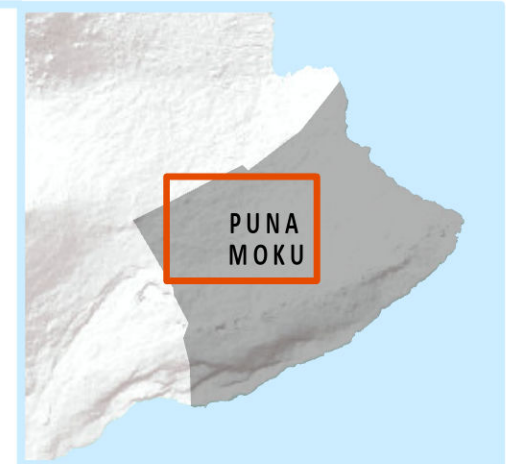
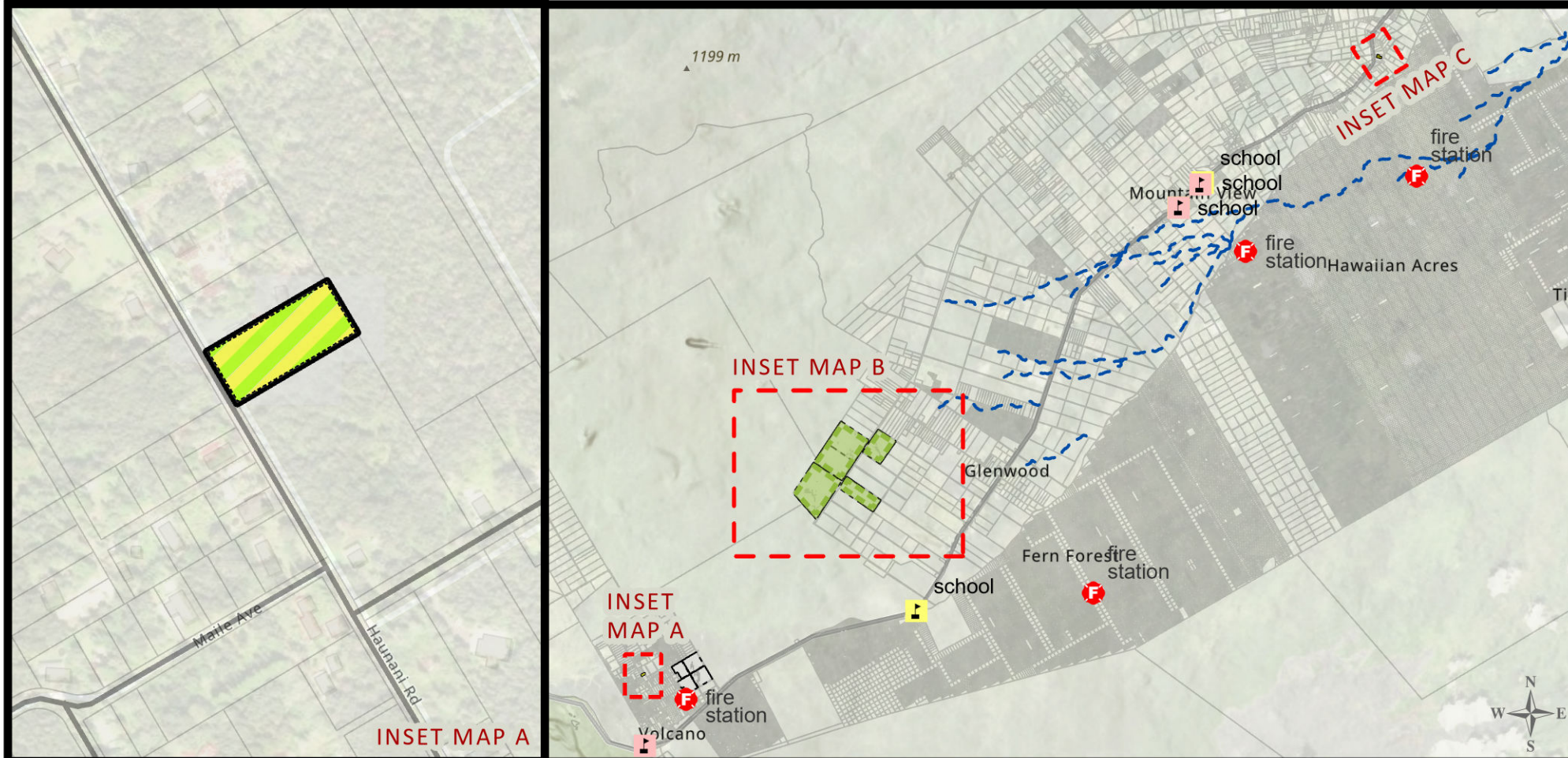
Land Use Designations

Residential		0.0
Subsistence Agriculture		0.0
Supplemental Agriculture		0.0
Pastoral		0.0
Community Use		0.0
Community Agriculture		0.0
Commercial		0.0
Industrial		0.0
Renewable Energy		100.0
Stewardship		0.0
Conservation		0.0
Special District		0.0
DHHL Kuleana		0.0

Notes

- The site is largely flat.
- The southern portion of the property is within a high risk lava-flow area.
- The 2014-2015 lava flows are 0.5 miles away from the property.
- Soil for the property is rated low for ag use.

Approximate Total Acres
± 100.0



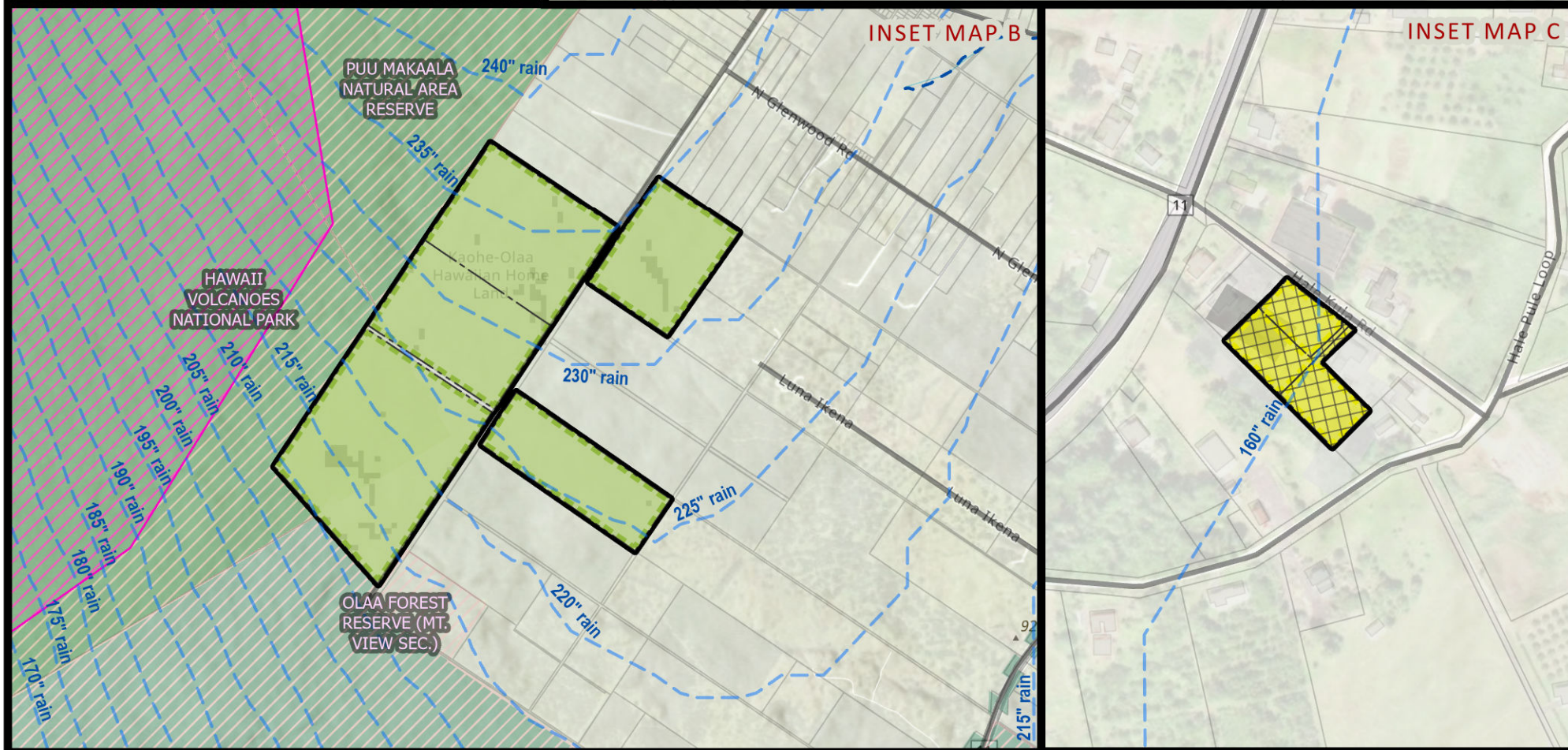
Island Plan Update

Land Use Designations

Residential	1.7
Subsistence Agriculture	0.0
Supplemental Agriculture	0.0
Pastoral	693.5
Community Use	0.0
Community Agriculture	0.0
Commercial	0.0
Industrial	0.0
Renewable Energy	0.0
Stewardship	0.0
Conservation	0.0
Special District	0.0
DHHL Kuleana	0.0

Notes

- All sites are generally flat and rated low for ag use.
- Slope less than 10% is preferred for Residential, Pastoral (grazing), Community Use, Commercial, and Industrial.
- Slope less than 15% is preferred for Subsistence, Supplemental and Community Agriculture.
- Slope up to 20% is feasible for all land uses above. Pastoral (ag uses) can go up to 30%.
- Slope greater than the above is too steep.
- The land in Inset Map B is very dense with thick trees.



Land Use Options

Residential/ Subsistence Agriculture	1.1
--------------------------------------	-----

Approximate Total Acres
± 696.3