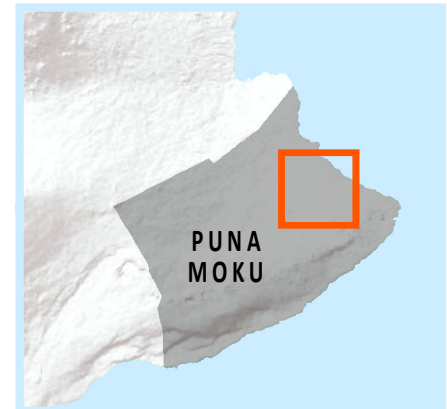
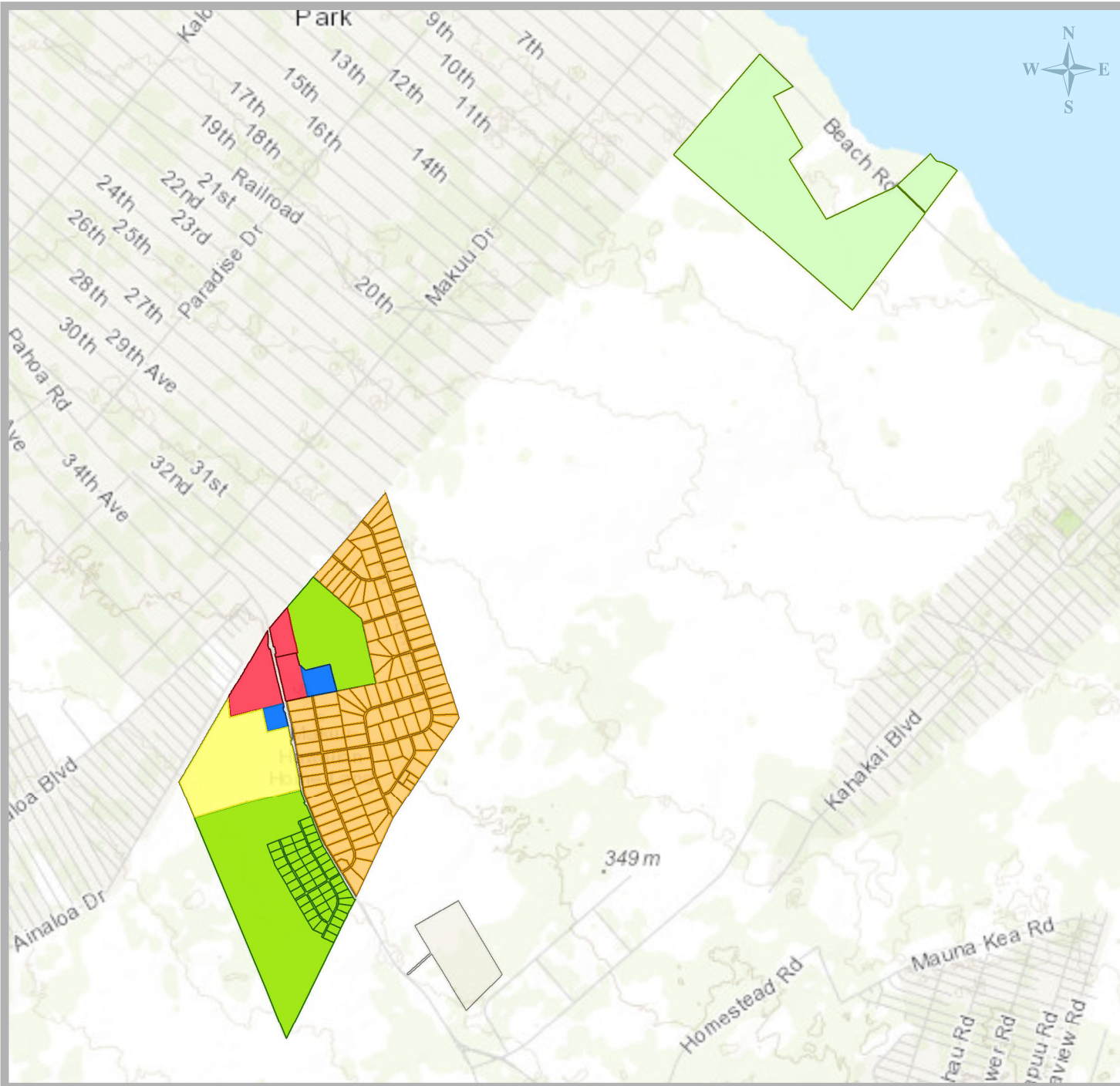
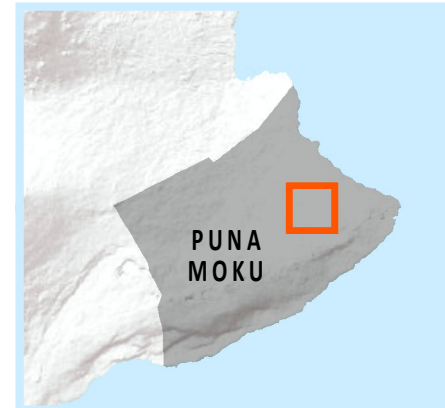
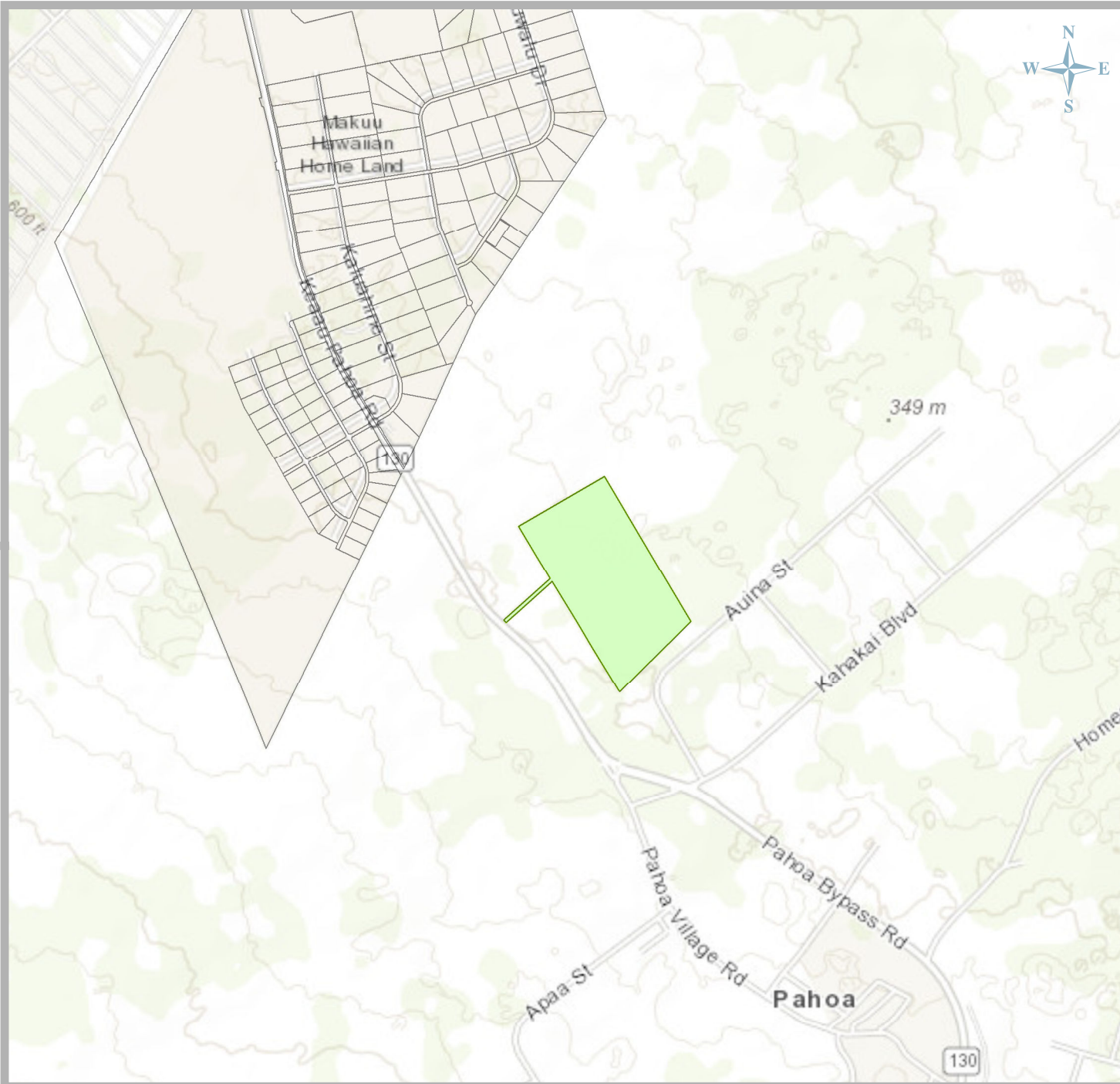


MAKU'U | PUNA MOKU, HAWAI'I



2002 Island Plan Land Use Designation

Residential		187.3 ac
Supplemental Agriculture		685.3 ac
Subsistence Agriculture		560.1 ac
General Agriculture		500.0 ac
Pastoral		0.0 ac
Community Use		28.0 ac
Commercial		90.8 ac
Industrial		0.0 ac
Conservation		0.0 ac
Special District		0.0 ac
(no land use designated)		0.0 ac
Total:		2,051.6 acres

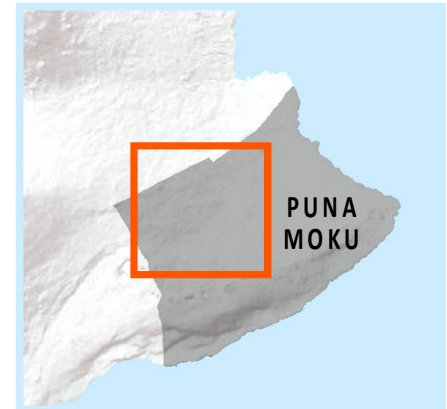
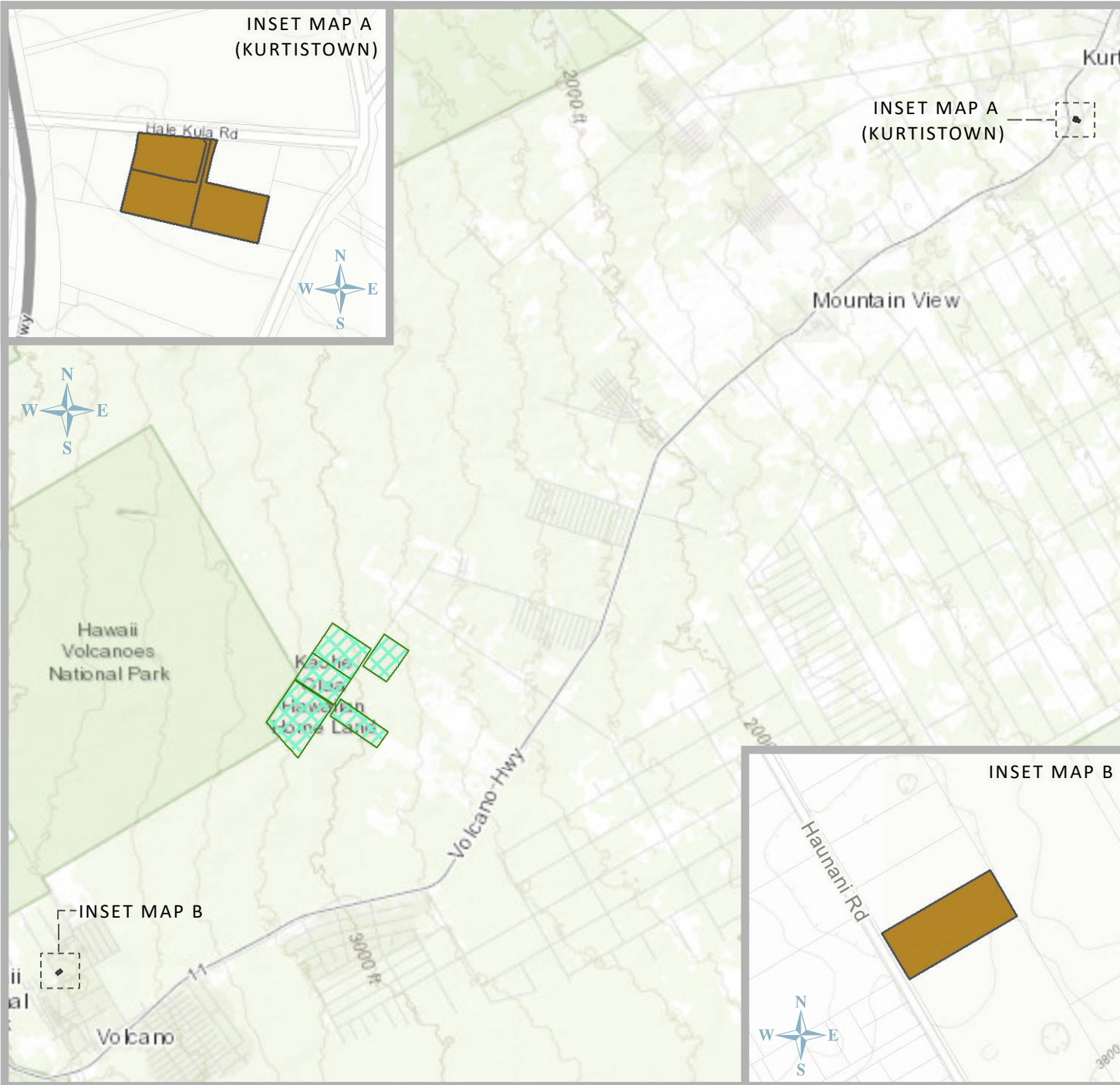


**2002 Island Plan
Land Use Designation**

Residential		0.0 ac
Supplemental Agriculture		0.0 ac
Subsistence Agriculture		0.0 ac
General Agriculture		100.0 ac
Pastoral		0.0 ac
Community Use		0.0 ac
Commercial		0.0 ac
Industrial		0.0 ac
Conservation		0.0 ac
Special District		0.0 ac
(no land use designated)		0.0 ac

Total: 100.0 acres

‘ŌLA’A & KURTISTOWN | PUNA MOKU, HAWAI‘I



2002 Island Plan Land Use Designation

Residential		0.0 ac
Supplemental Agriculture		0.0 ac
Subsistence Agriculture		0.0 ac
General Agriculture		0.0 ac
Pastoral		705.1 ac
Community Use		0.0 ac
Commercial		0.0 ac
Industrial		0.0 ac
Conservation		0.0 ac
Special District		0.0 ac
(no land use designated)		2.7 ac
Total:		707.8 acres