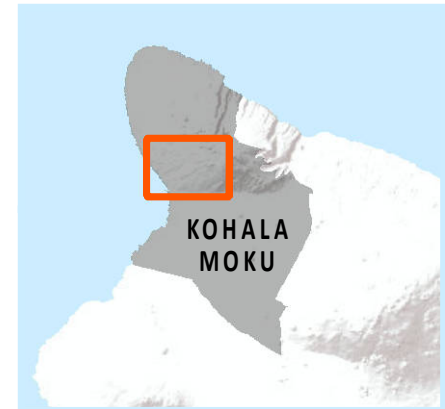
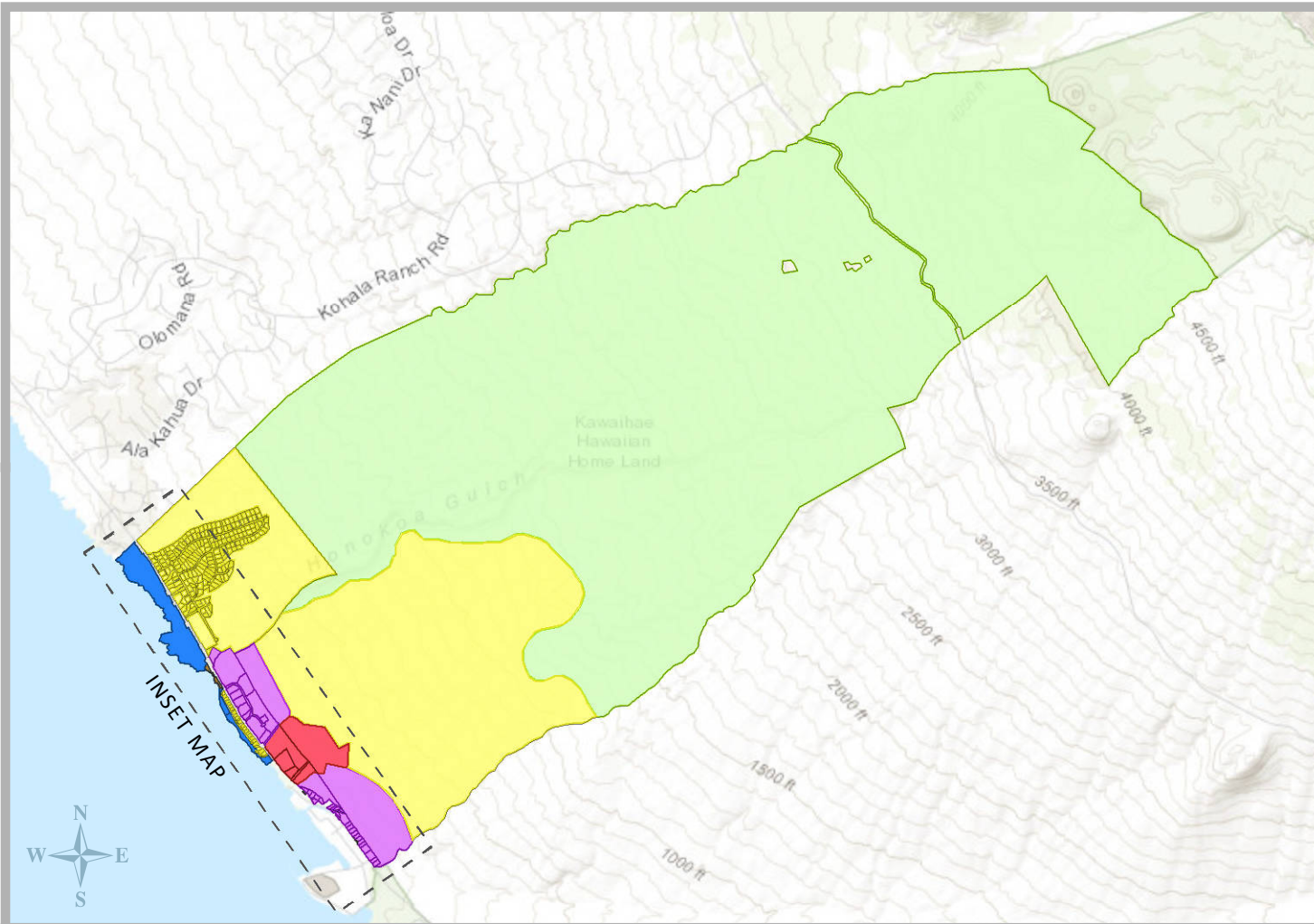
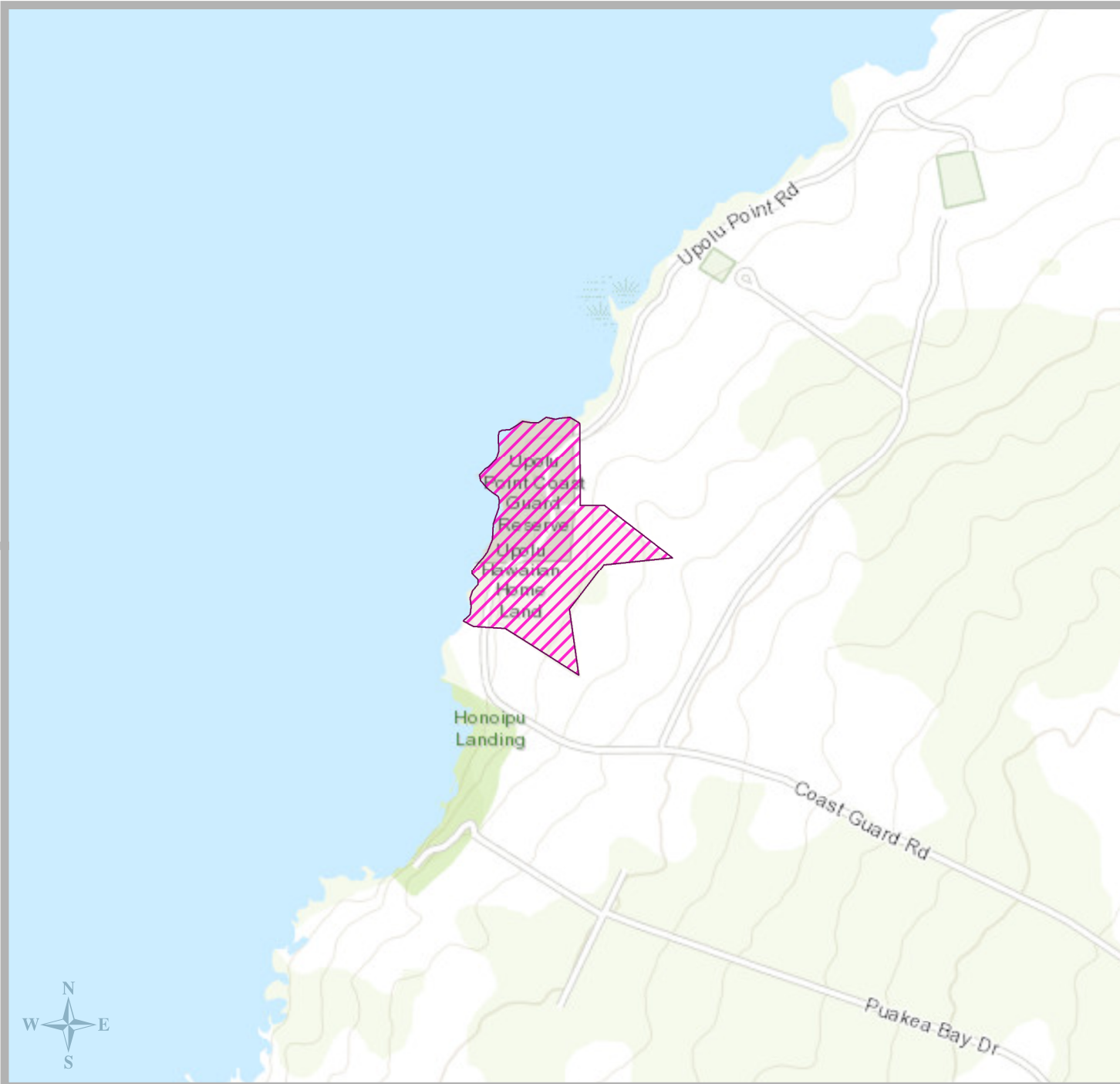


**KAWAIHAE | KOHALA MOKU, HAWAI'I**




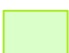









### 2002 Island Plan Land Use Designation

Residential		2,224.9 ac
Supplemental Agriculture		0.0 ac
Subsistence Agriculture		0.0 ac
General Agriculture		7,434.2 ac
Pastoral		0.0 ac
Community Use		81.5 ac
Commercial		90.5 ac
Industrial		265.5 ac
Conservation		0.0 ac
Special District		0.0 ac
(no land use designated)		1.9 ac
<b>Total:</b>		<b>10,098.6 acres</b>

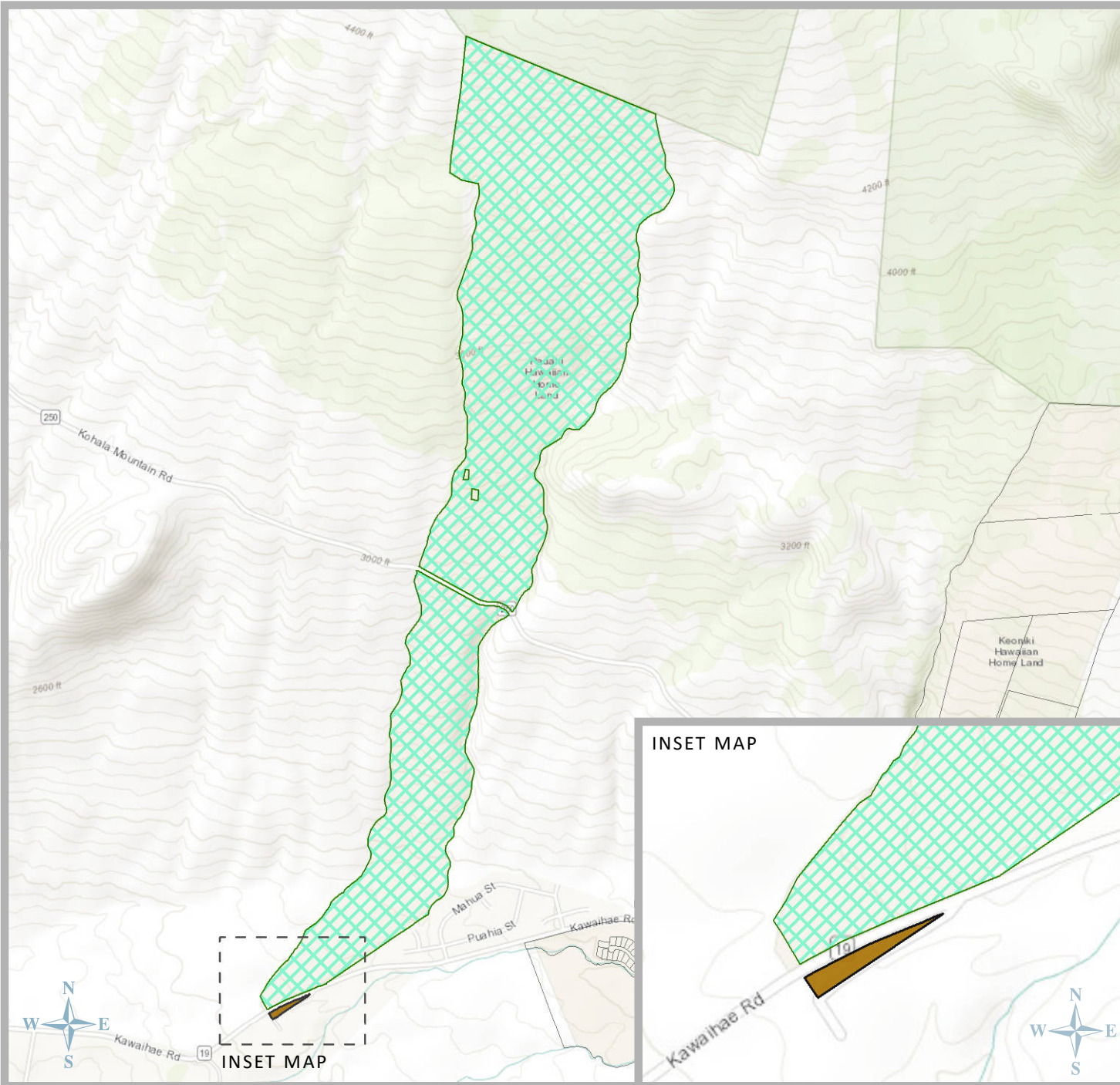


**2002 Island Plan  
Land Use Designation**












Residential		0.0 ac
Supplemental Agriculture		0.0 ac
Subsistence Agriculture		0.0 ac
General Agriculture		0.0 ac
Pastoral		0.0 ac
Community Use		0.0 ac
Commercial		0.0 ac
Industrial		0.0 ac
Conservation		0.0 ac
Special District		37.4 ac
(no land use designated)		0.0 ac

**Total: 37.4 acres**

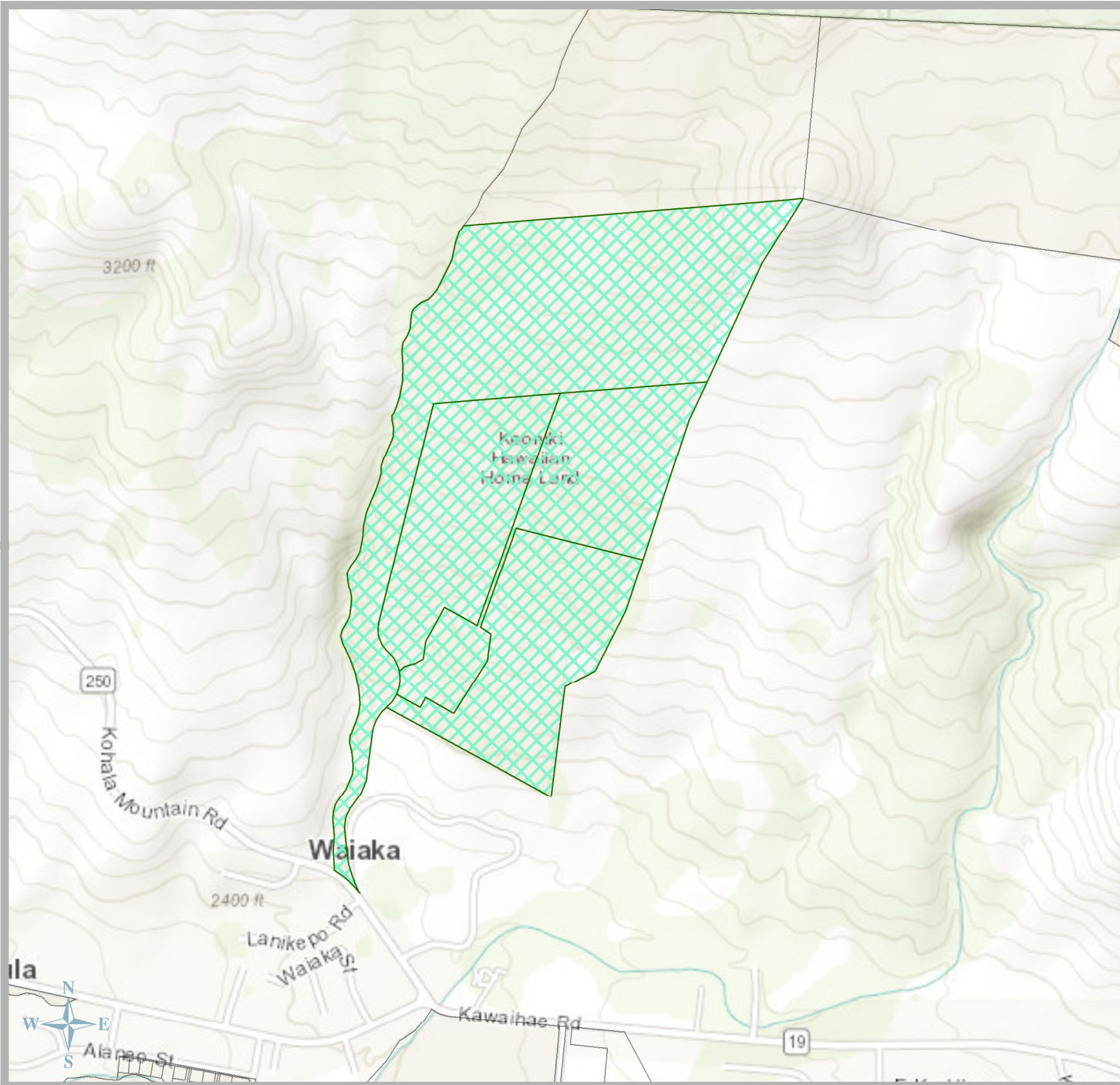




**2002 Island Plan  
Land Use Designation**

Residential		0.0 ac
Supplemental Agriculture		0.0 ac
Subsistence Agriculture		0.0 ac
General Agriculture		0.0 ac
Pastoral		554.6 ac
Community Use		0.0 ac
Commercial		0.0 ac
Industrial		0.0 ac
Conservation		0.0 ac
Special District		0.0 ac
(no land use designated)		0.9 ac

**Total: 555.5 acres**

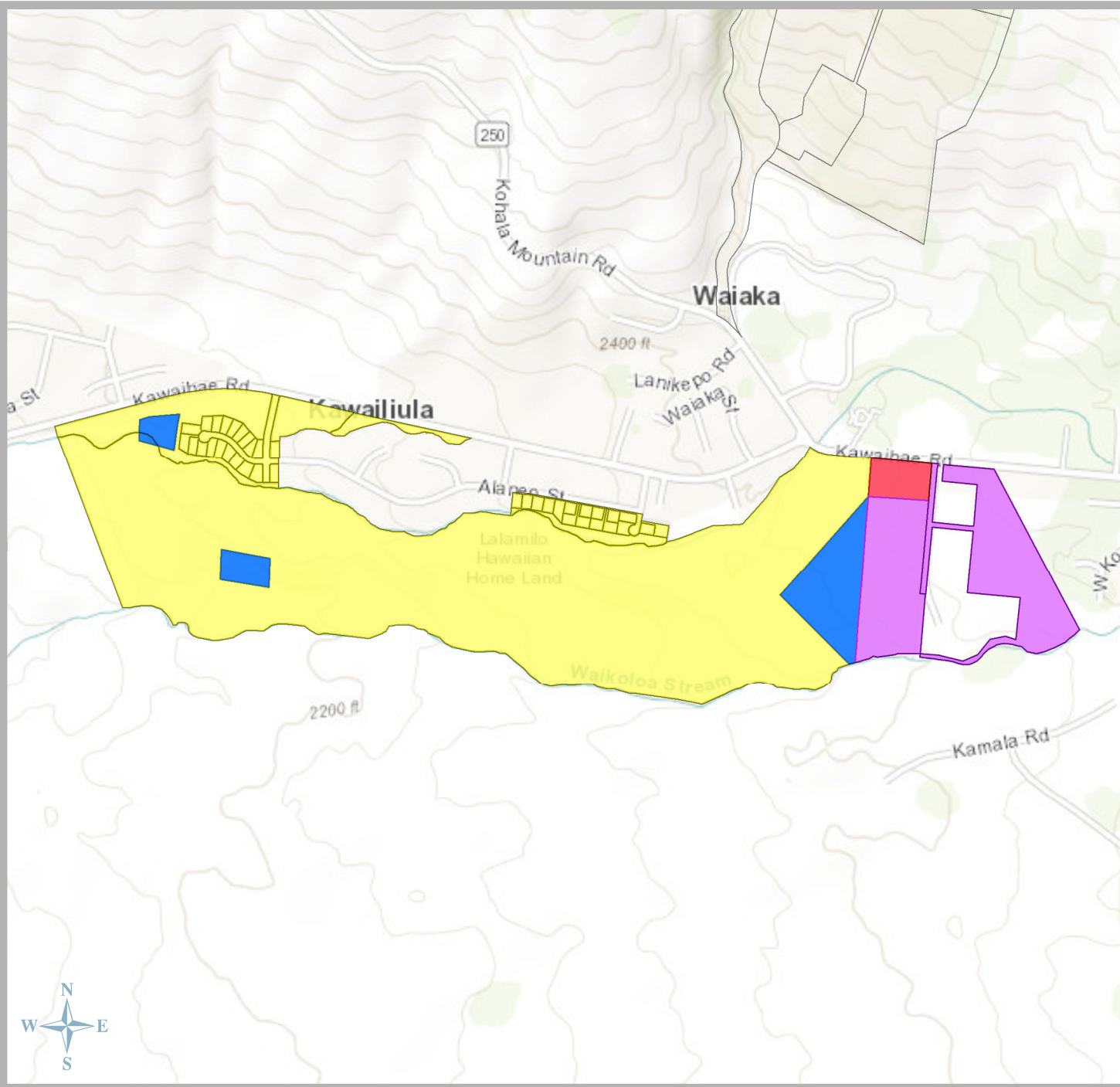


**2002 Island Plan  
Land Use Designation**

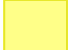


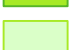







Residential		0.0 ac
Supplemental Agriculture		0.0 ac
Subsistence Agriculture		0.0 ac
General Agriculture		0.0 ac
Pastoral		230.1 ac
Community Use		0.0 ac
Commercial		0.0 ac
Industrial		0.0 ac
Conservation		0.0 ac
Special District		0.0 ac
(no land use designated)		0.0 ac

**Total: 230.1 acres**



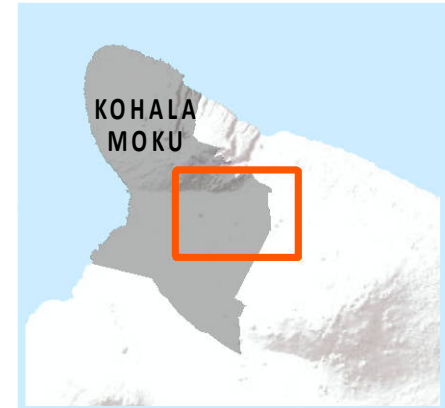
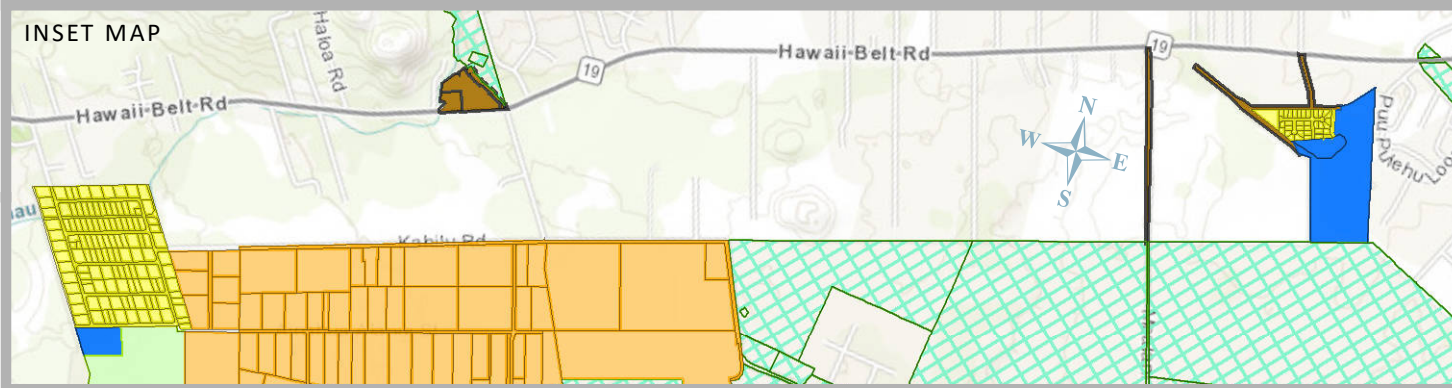
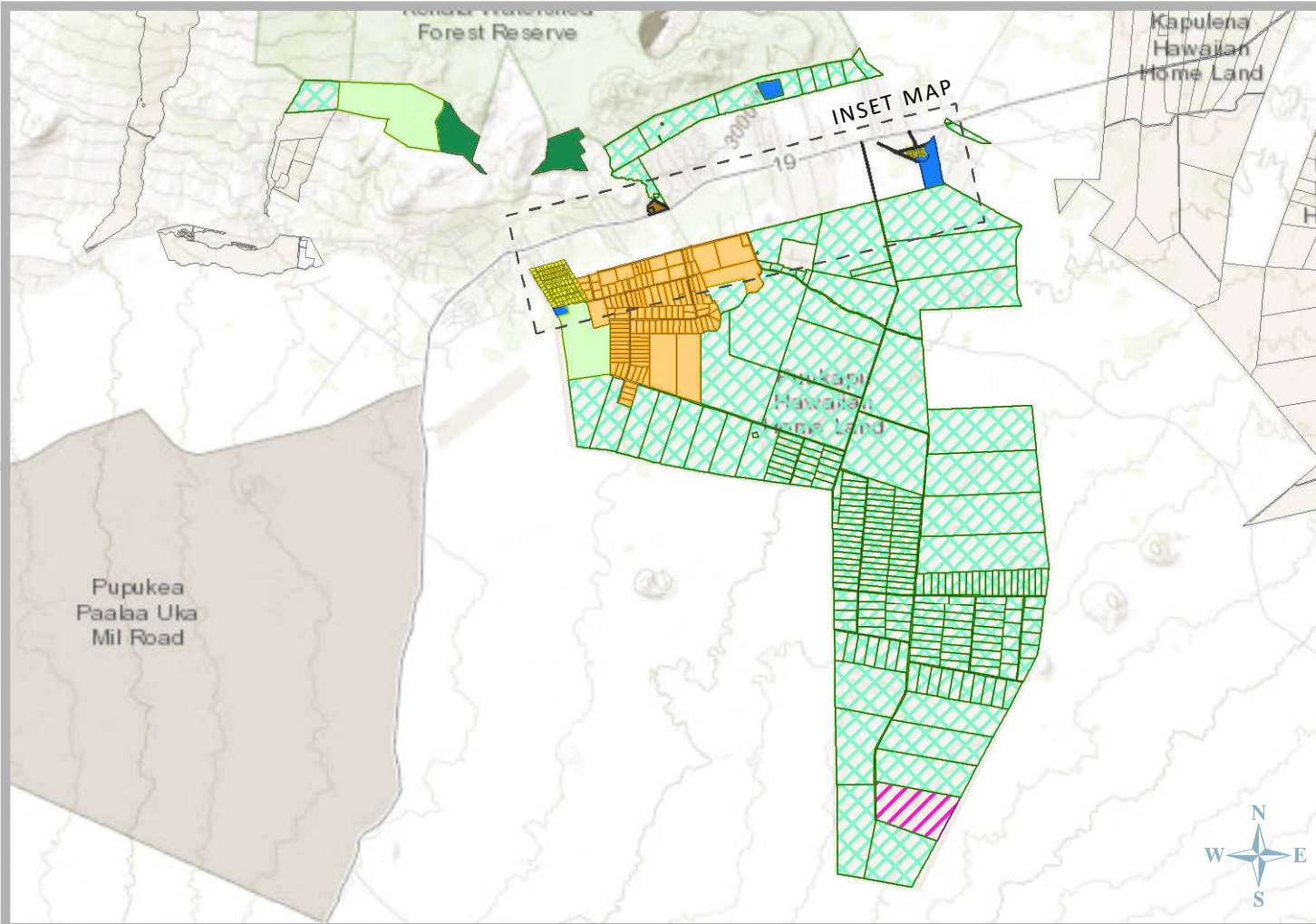


### 2002 Island Plan Land Use Designation

Residential		217.5 ac
Supplemental Agriculture		0.0 ac
Subsistence Agriculture		0.0 ac
General Agriculture		0.0 ac
Pastoral		0.0 ac
Community Use		15.6 ac
Commercial		3.8 ac
Industrial		33.7 ac
Conservation		0.0 ac
Special District		0.0 ac
(no land use designated)		0.0 ac

**Total: 270.7 acres**

**PU'UKAPU | KOHALA MOKU, HAWAI'I**



**2002 Island Plan  
Land Use Designation**

Residential		115.6 ac
Supplemental Agriculture		1,084.5 ac
Subsistence Agriculture		0.0 ac
General Agriculture		480.1 ac
Pastoral		9,846.8 ac
Community Use		80.7 ac
Commercial		0.0 ac
Industrial		0.0 ac
Conservation		168.5 ac
Special District		200.0 ac
(no land use designated)		18.5 ac

**Total: 11,994.8 acres**