

### Site Assessment Highlights

- Existing Roadways
- State & County Conservation
- Streams
  - ~ Perennial
  - ~ Non-Perennial
- Slope Range
  - < 10% (Preferred)
  - 10 - 20% (Feasible)
  - > 20% (Too steep for some land uses)



### Island Plan Update

#### Land Use Designations

Residential	■	0.0
Subsistence Agriculture	■	0.0
Supplemental Agriculture	■	0.0
Pastoral	■	0.0
Community Use	■	0.0
Community Agriculture	■	0.0
Commercial	■	0.0
Industrial	■	0.0
Renewable Energy	■	0.0
Stewardship	■	0.0
Conservation	■	0.0
Special District	■	0.0
DHHL Kuleana	■	0.0

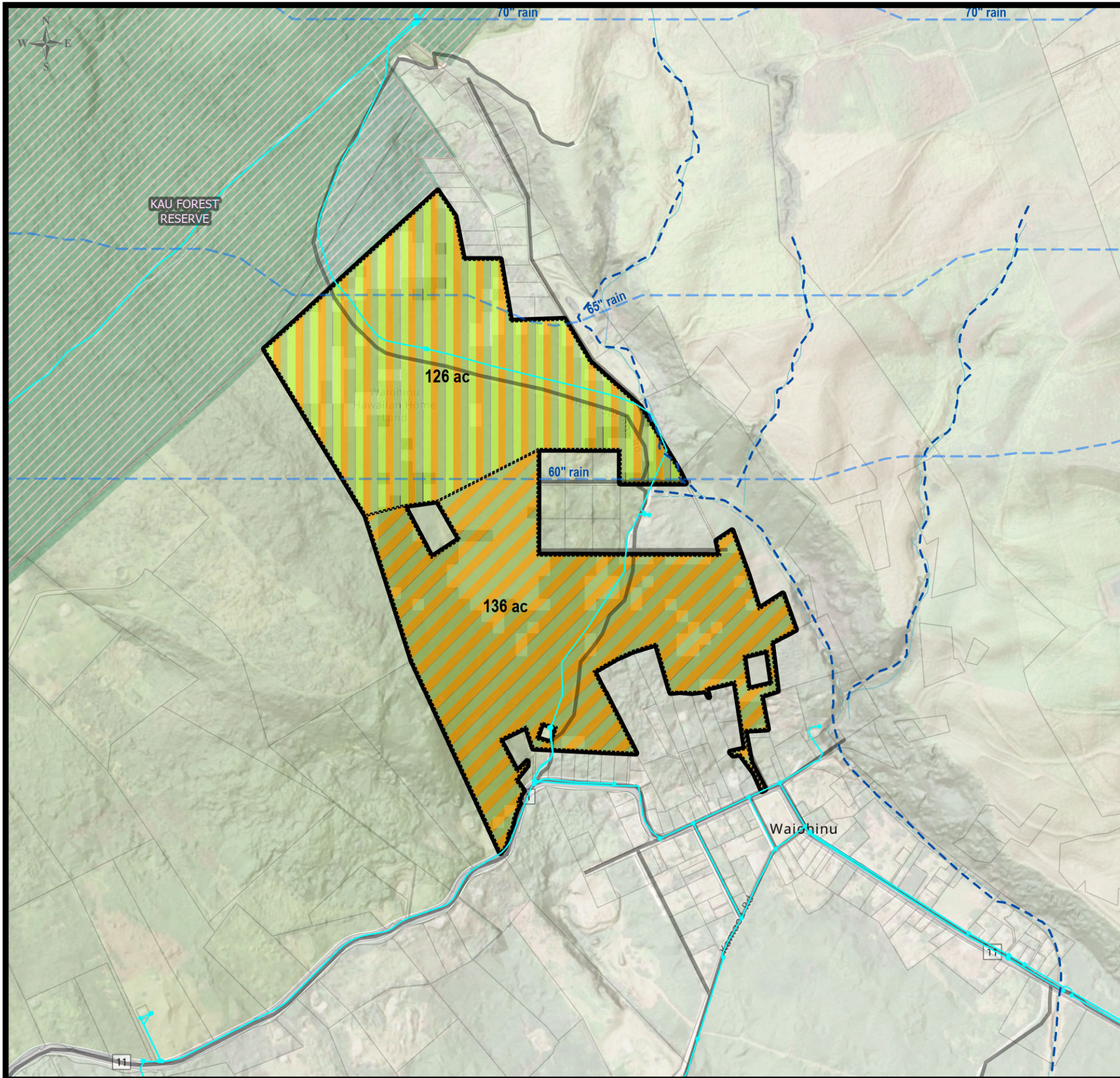
#### Land Use Options

Pastoral/Residential	■	65.6
----------------------	---	------

### Notes

- Slope less than 10% is preferred for Residential, Pastoral (grazing), Community Use, Commercial, and Industrial.
- Slope less than 15% is preferred for Subsistence, Supplemental and Community Agriculture.
- Slope up to 20% is feasible for all land uses above. Pastoral (ag uses) can go up to 30%.
- Slope greater than the above is too steep.
- Soil at the site is rated low for ag use.
- Water capacity and availability to the site is unknown.
- There is no county water main pipeline nearby.

Approximate Total Acres  
± 65.6



### Site Assessment Highlights

- Existing Roadways
  - County Water Main
  - - - Annual Rainfall > 60 Inches
  - State & County Conservation
- Streams
- ~ Perennial
  - ~ Non-Perennial
- Slope Range
- < 10% (Preferred)
  - 10 - 20% (Feasible)
  - > 20% (Too steep for some land uses)



### Island Plan Update

#### Land Use Designations

Residential	■	0.0
Subsistence Agriculture	■	0.0
Supplemental Agriculture	■	0.0
Pastoral	■	0.0
Community Use	■	0.0
Community Agriculture	■	0.0
Commercial	■	0.0
Industrial	■	0.0
Renewable Energy	■	0.0
Stewardship	■	0.0
Conservation	■	0.0
Special District	■	0.0
DHHL Kuleana	■	0.0

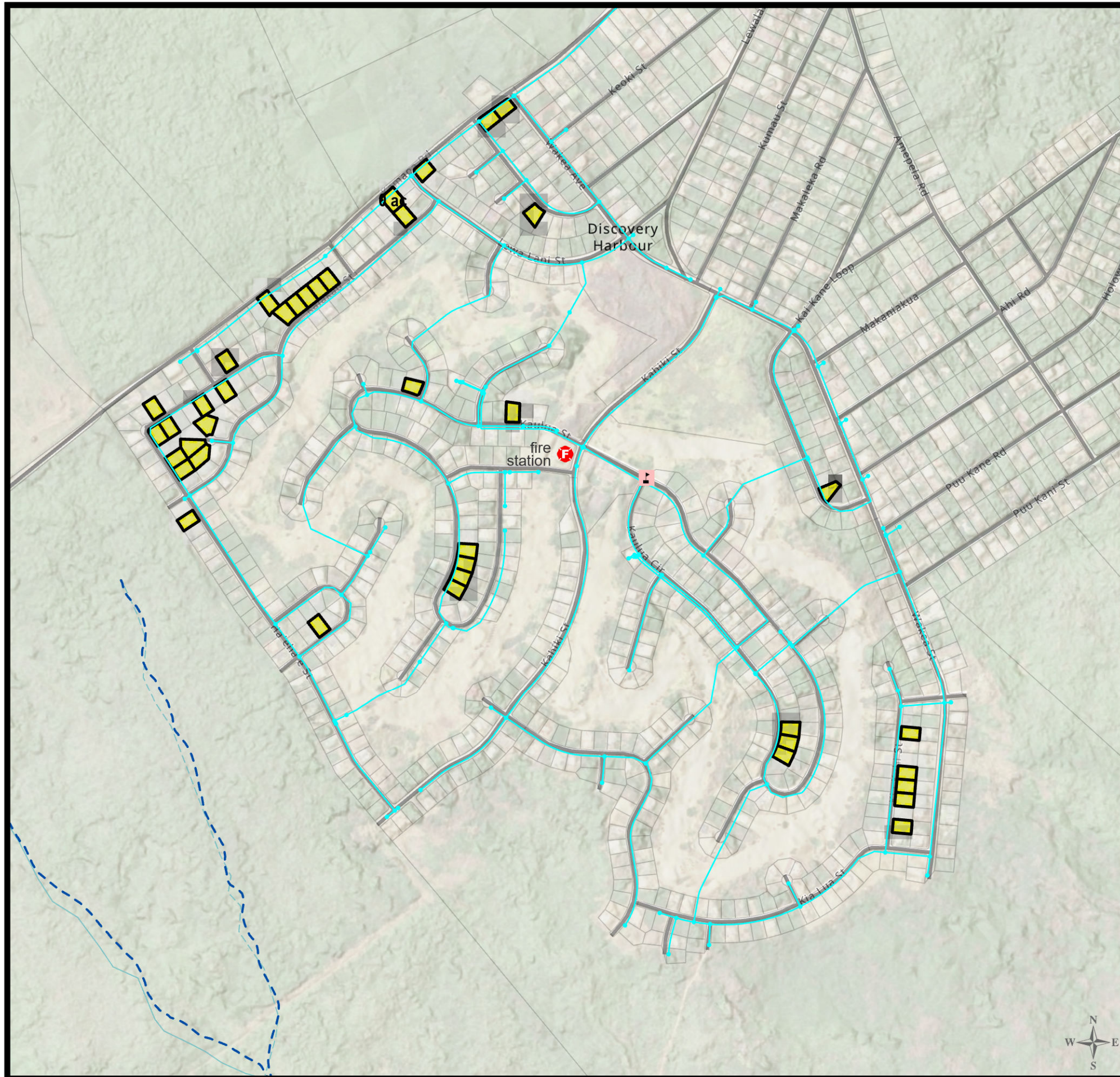
#### Land Use Options

Pastoral/Kuleana	■	125.6
Subsistence Agriculture/ Pastoral/ Kuleana	■	136.3

### Notes

- Slope less than 10% is preferred for Residential, Pastoral (grazing), Community Use, Commercial, and Industrial.
- Slope less than 15% is preferred for Subsistence, Supplemental and Community Agriculture.
- Slope up to 20% is feasible for all land uses above. Pastoral (ag uses) can go up to 30%.
- Slope greater than the above is too steep.
- Water availability and supply to the site is unknown.
- The southern half of the site is pretty steep.
- The soil at the site is rated low for ag use (\*The rating may be based on common plants on the mainland US.)

Approximate Total Acres  
± 261.9



### Site Assessment Highlights

- Existing Roadways
- County Water Main
- Streams
  - Perennial
  - Non-Perennial
- Slope Range
  - < 10% (Preferred)
  - 10 - 20% (Feasible)
  - > 20% (Too steep for some land uses)



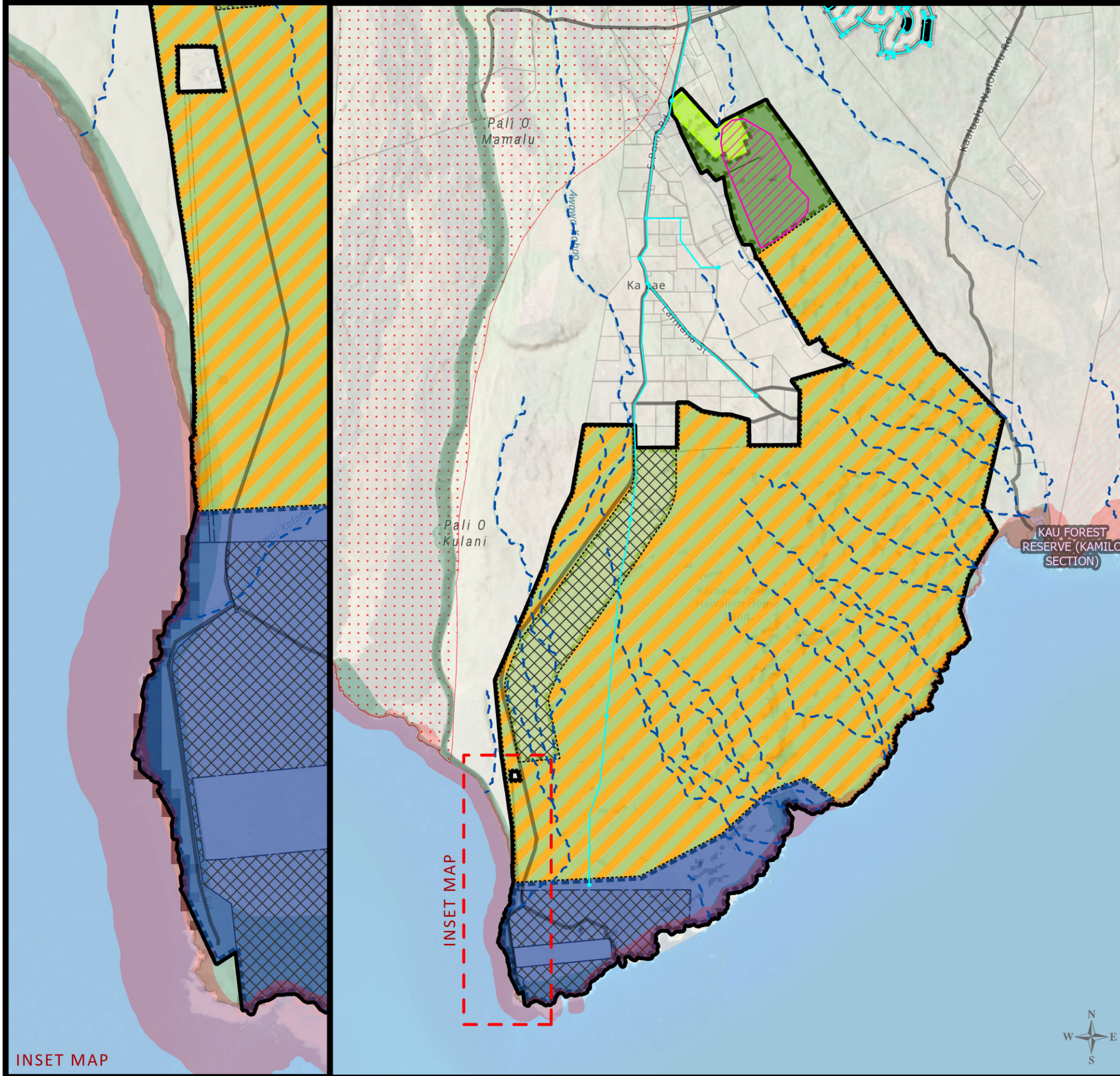
### Island Plan Update

Land Use Designations		
Residential		13.2
Subsistence Agriculture		0.0
Supplemental Agriculture		0.0
Pastoral		0.0
Community Use		0.0
Community Agriculture		0.0
Commercial		0.0
Industrial		0.0
Renewable Energy		0.0
Stewardship		0.0
Conservation		0.0
Special District		0.0
DHHL Kuleana		0.0

### Notes

- The site is flat.
- The site has already been developed for residential use.

Approximate Total Acres  
± 13.2



INSET MAP

**Site Assessment Highlights**

- Long Term Leases
  - Existing Roadways
  - County Water Main
  - Flood Prone Areas
  - Critical Habitats
  - High Risk Lava-Flow Areas
  - State & County Conservation
- Streams
- Perennial
  - Non-Perennial
- Slope Range
- < 10% (Preferred)
  - 10 - 20% (Feasible)
  - > 20% (Too steep for some land uses)

**Notes**

- The site is generally flat.
- The soil is rated low for ag uses.
- The site receives less than 60 inches of rain annually.
- There are existing pastoral lots located in the west of the site.
- The South Point Resources Management Plan is proposing a resource management area where Special District is designated in the south of the site.
- An approximate habitat area for endangered plants is identified at the northern tip of the site.



**Island Plan Update**

**Land Use Designations**

Residential		0.0
Subsistence Agriculture		112.9
Supplemental Agriculture		0.0
Pastoral		753.2
Community Use		0.0
Community Agriculture		0.0
Commercial		0.0
Industrial		0.0
Renewable Energy		0.0
Stewardship		0.0
Conservation		489.2
Special District		1,218.5
DHHL Kuleana		0.0

**Land Use Options**

Pastoral/Kuleana		8,697.5
------------------	--	---------

**Approximate Total Acres**  
± 11,271.3

