









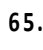
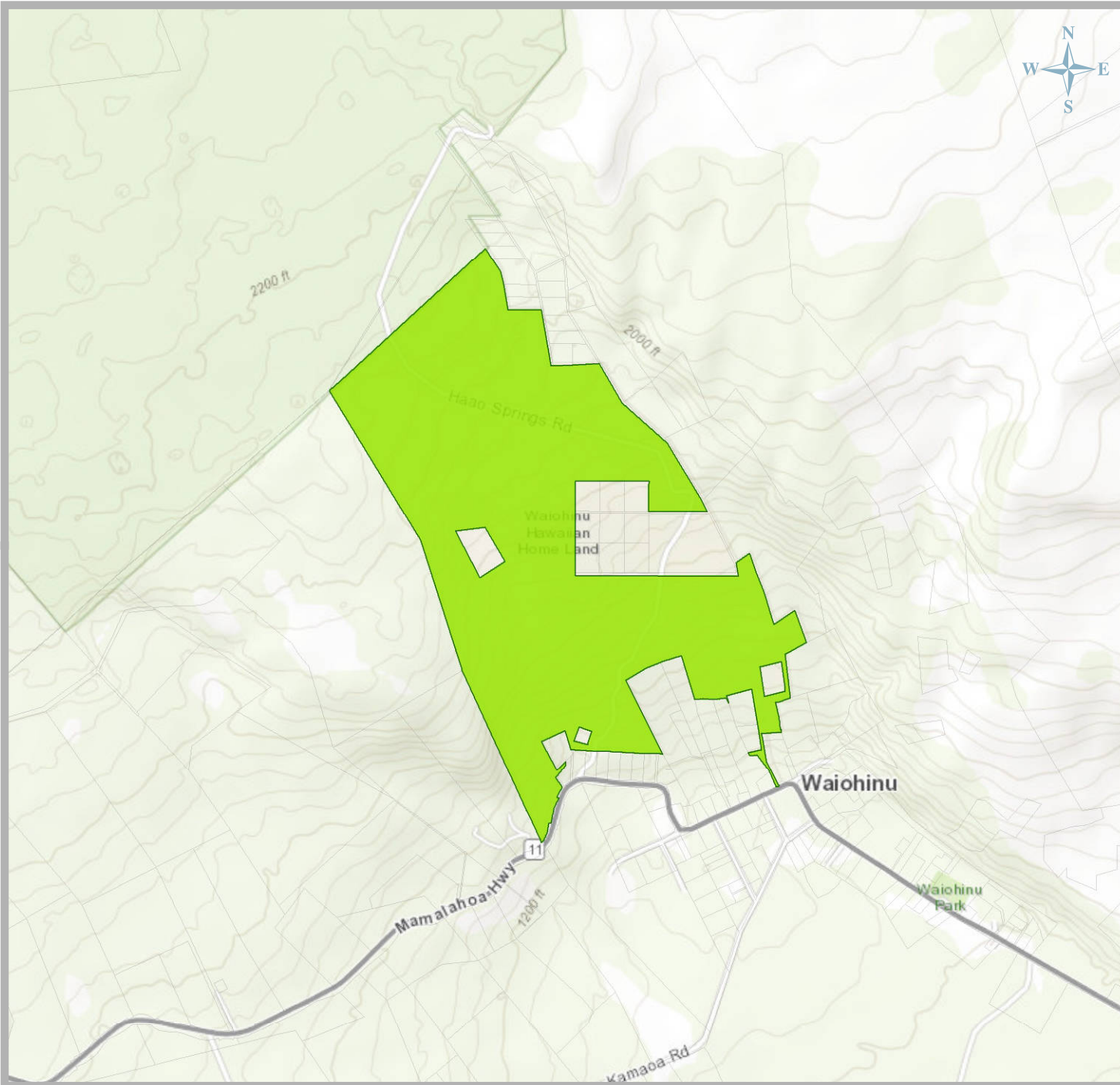


**2002 Island Plan
Land Use Designation**

Residential		65.0 ac
Supplemental Agriculture		0.0 ac
Subsistence Agriculture		0.0 ac
General Agriculture		0.0 ac
Pastoral		0.0 ac
Community Use		0.0 ac
Commercial		0.0 ac
Industrial		0.0 ac
Conservation		0.0 ac
Special District		0.0 ac
(no land use designated)		0.0 ac

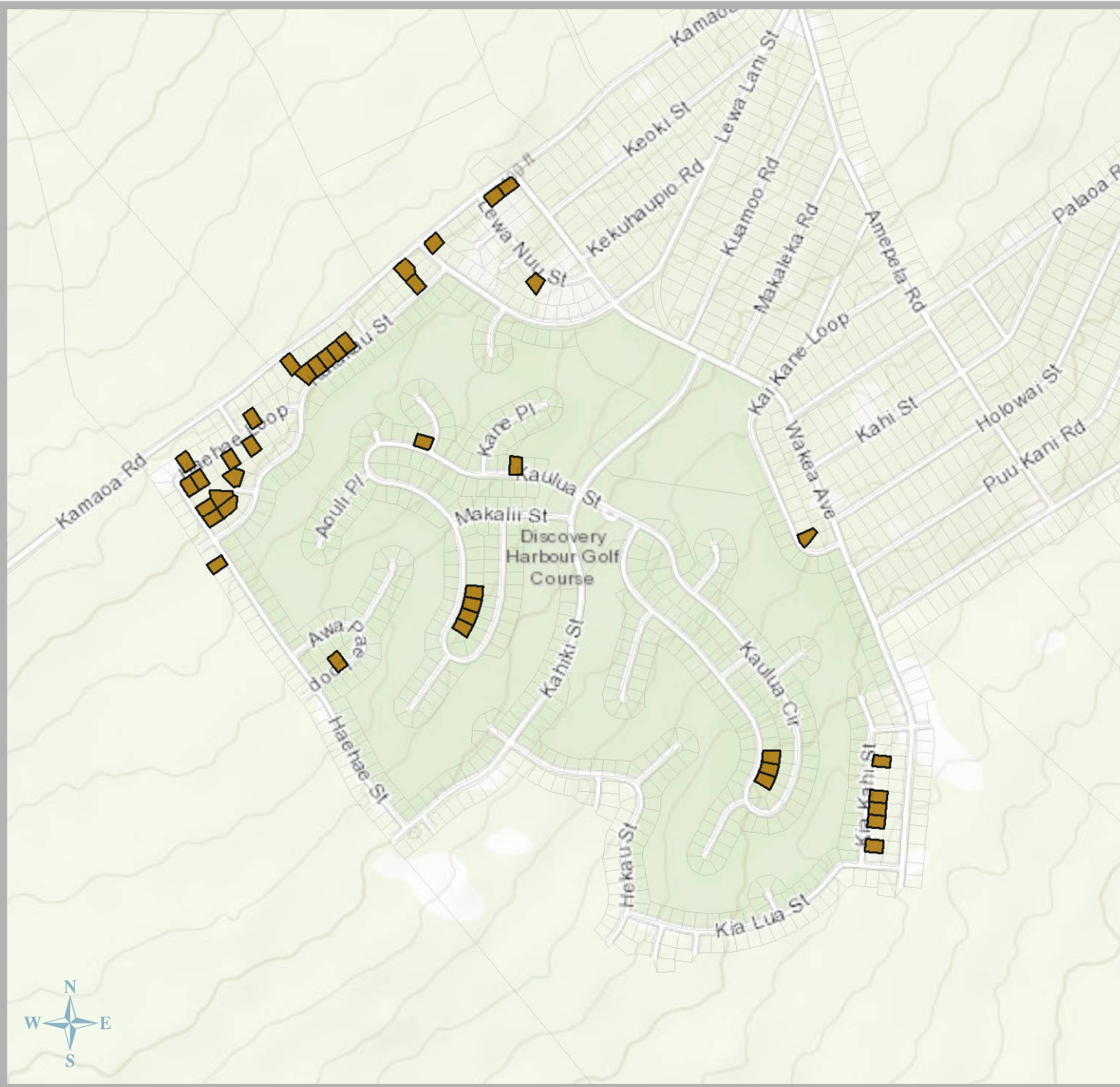
Total: 65.0 acres



2002 Island Plan Land Use Designation

Residential		0.0 ac
Supplemental Agriculture		0.0 ac
Subsistence Agriculture		261.8 ac
General Agriculture		0.0 ac
Pastoral		0.0 ac
Community Use		0.0 ac
Commercial		0.0 ac
Industrial		0.0 ac
Conservation		0.0 ac
Special District		0.0 ac
(no land use designated)		0.0 ac

Total: 261.8 acres

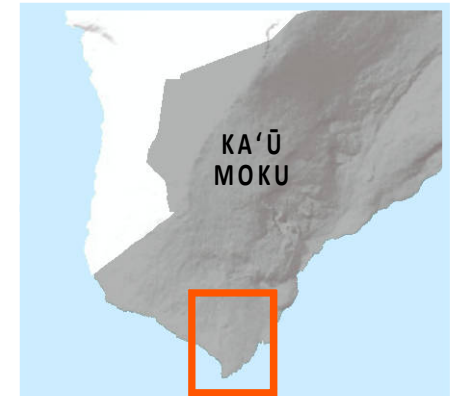
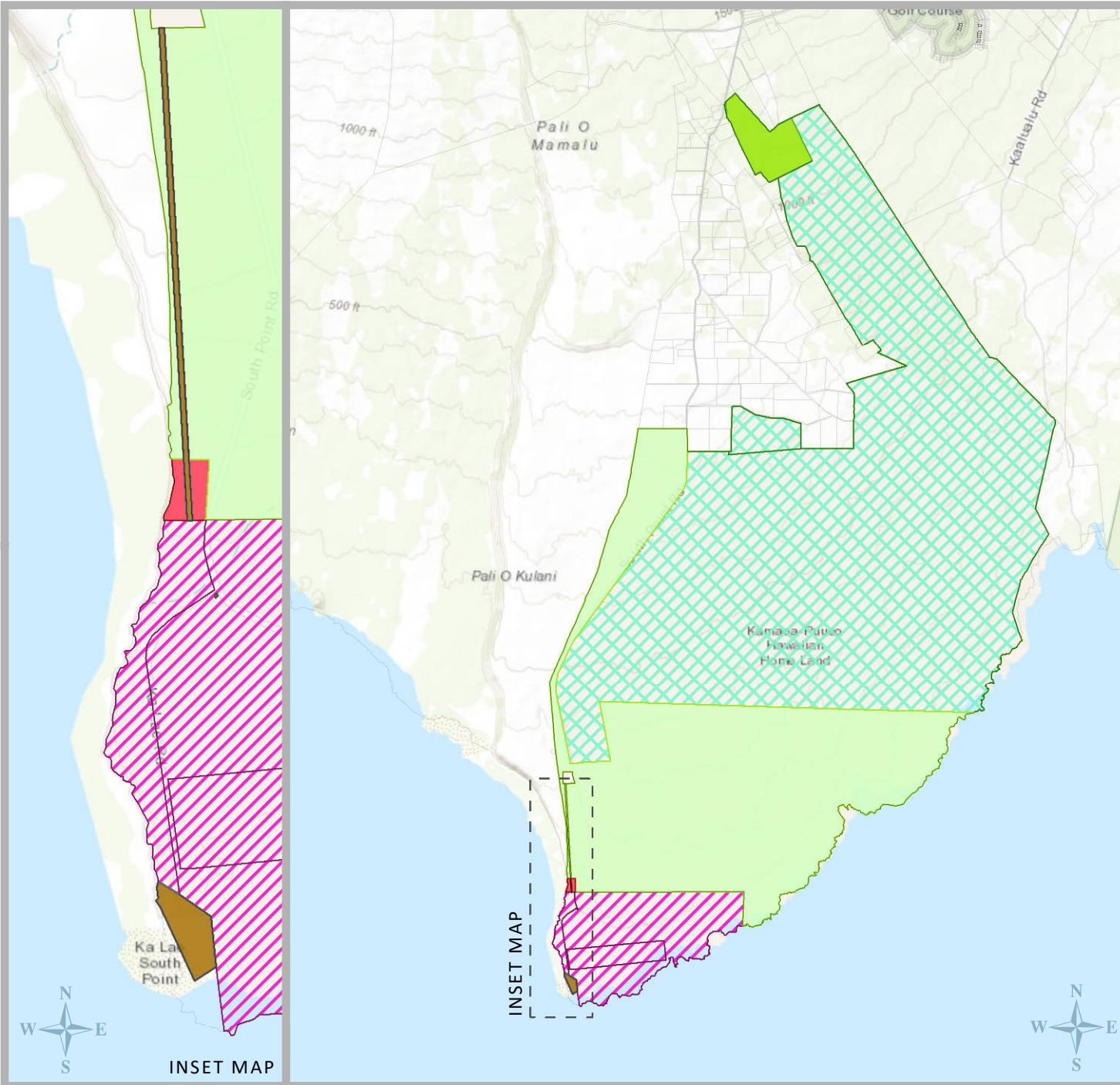


2002 Island Plan Land Use Designation

Residential		0.0 ac
Supplemental Agriculture		0.0 ac
Subsistence Agriculture		0.0 ac
General Agriculture		0.0 ac
Pastoral		0.0 ac
Community Use		0.0 ac
Commercial		0.0 ac
Industrial		0.0 ac
Conservation		0.0 ac
Special District		0.0 ac
(no land use designated)		13.1 ac

Total: 13.1 acres

KAMĀ'OA-PU'U'EO | KA'Ū MOKU, HAWAI'I



**2002 Island Plan
Land Use Designation**

Residential		0.0 ac
Supplemental Agriculture		0.0 ac
Subsistence Agriculture		178.1 ac
General Agriculture		3,240.3 ac
Pastoral		7,209.7 ac
Community Use		0.0 ac
Commercial		4.6 ac
Industrial		0.0 ac
Conservation		0.0 ac
Special District		701.0 ac
(no land use designated)		18.7 ac

Total: 11,352.4 acres