


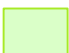







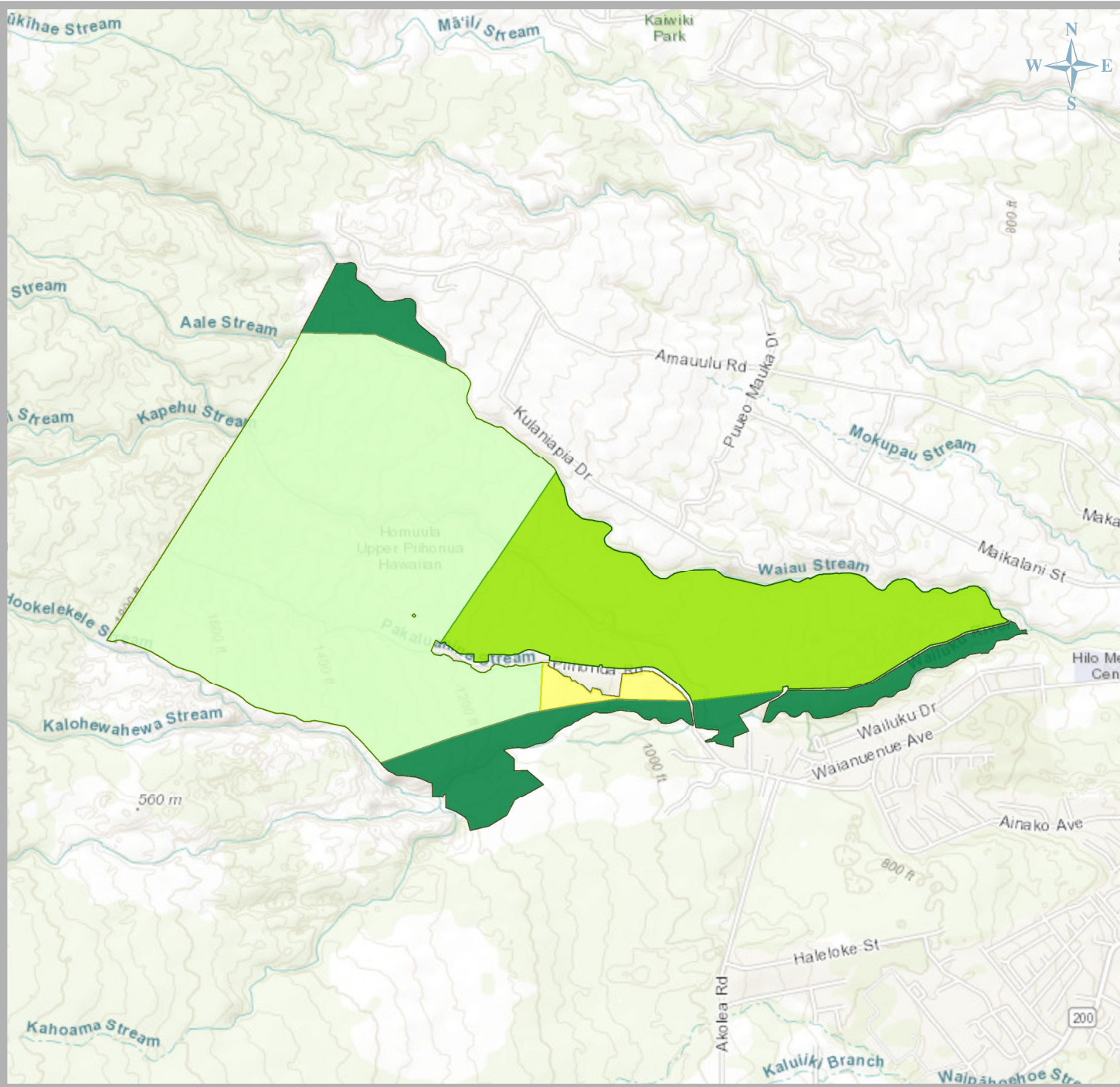


2002 Island Plan Land Use Designation

Residential		0.0 ac
Supplemental Agriculture		767.0 ac
Subsistence Agriculture		0.0 ac
General Agriculture		0.0 ac
Pastoral		0.0 ac
Community Use		0.0 ac
Commercial		0.0 ac
Industrial		0.0 ac
Conservation		0.0 ac
Special District		10.3 ac
(no land use designated)		0.0 ac

Total: 777.3 acres

LOWER PI'IHONUA | HILO MOKU, HAWAI'I

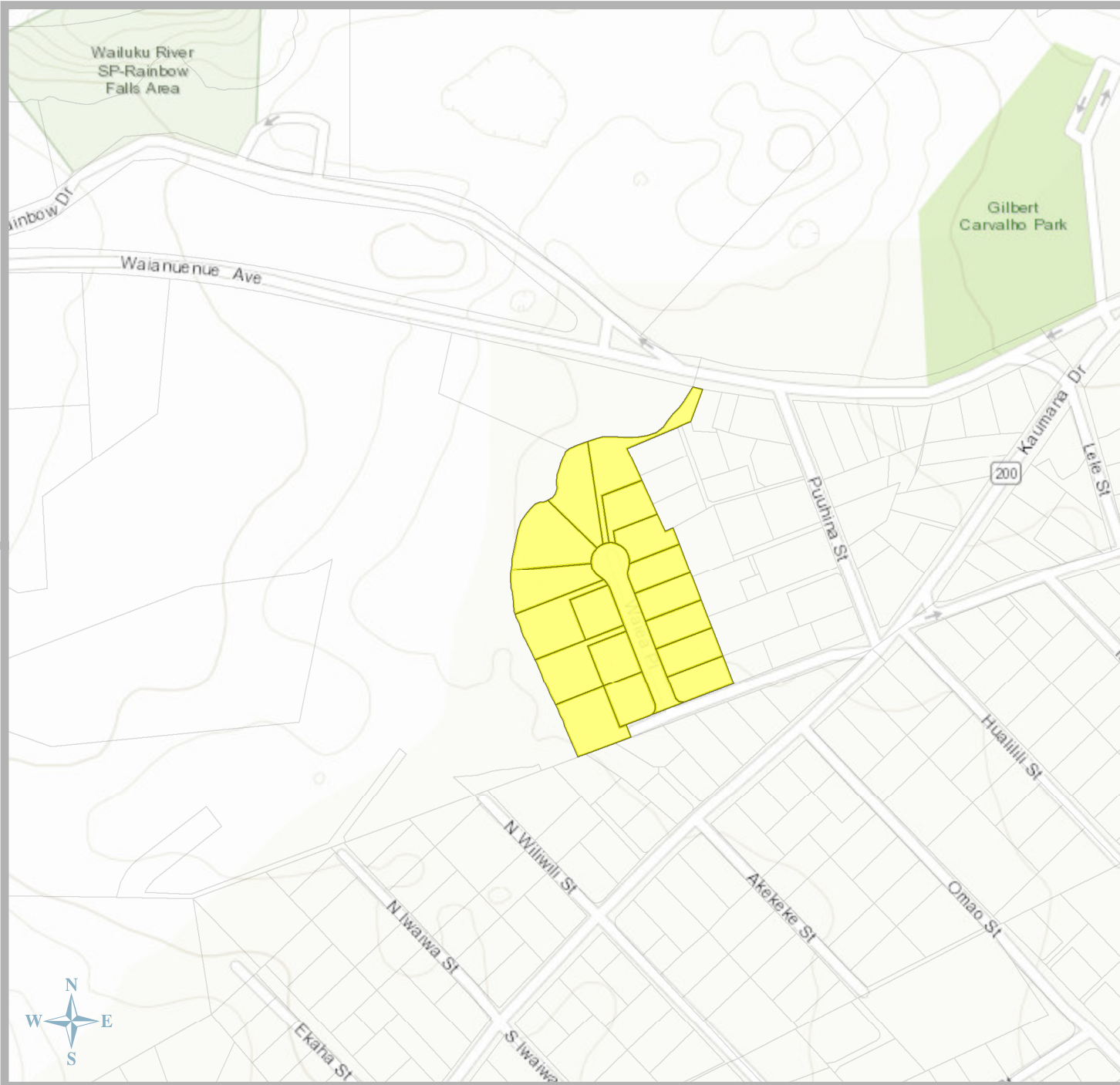


**2002 Island Plan
Land Use Designation**

Residential		31.2 ac
Supplemental Agriculture		0.0 ac
Subsistence Agriculture		529.1 ac
General Agriculture		1,075.5 ac
Pastoral		0.0 ac
Community Use		0.0 ac
Commercial		0.0 ac
Industrial		0.0 ac
Conservation		232.4 ac
Special District		0.0 ac
(no land use designated)		0.0 ac

Total: 1868.2 acres

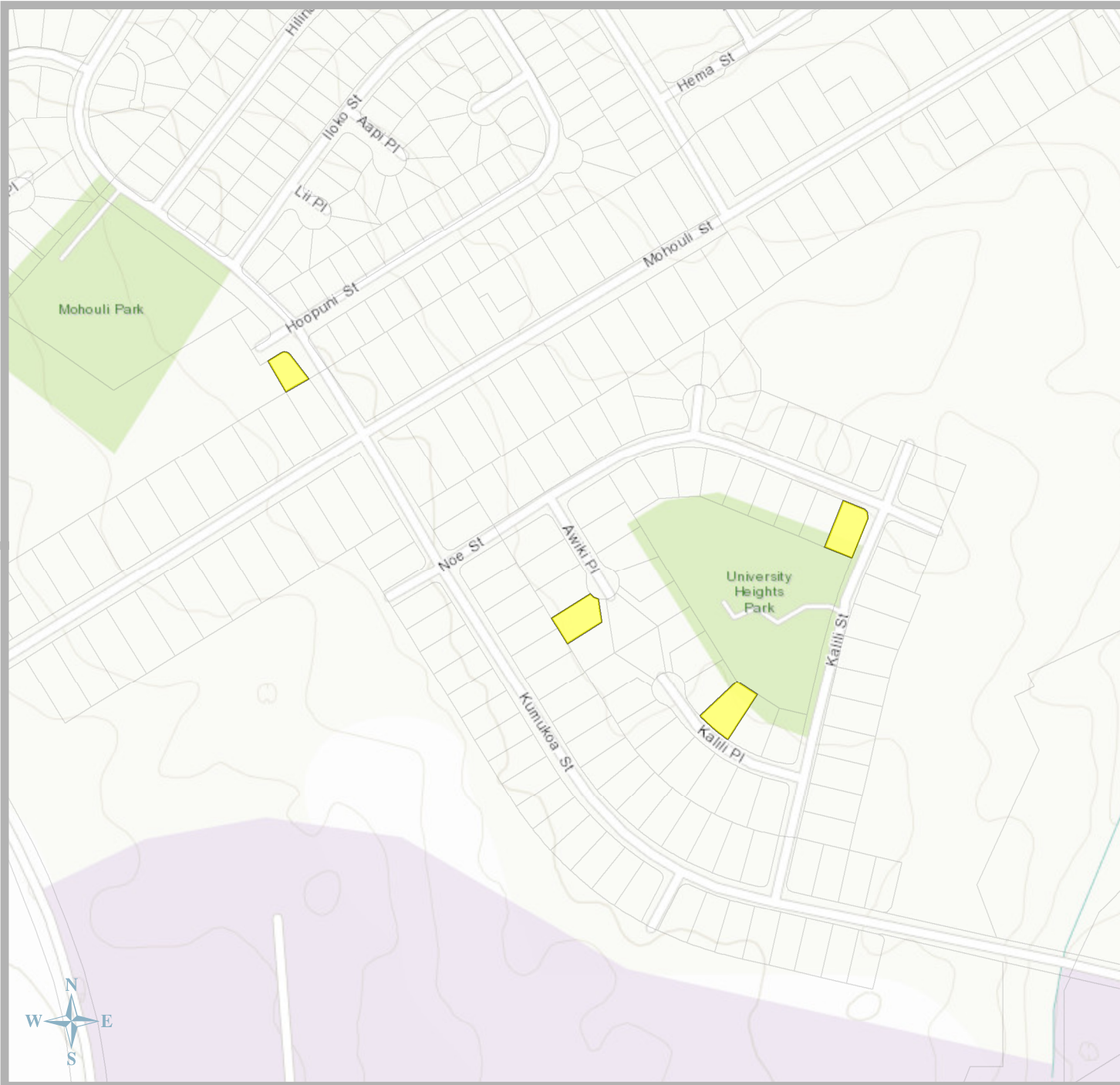
PI'IHONUA HOMESTEAD | HILO MOKU, HAWAI'I














**2002 Island Plan
Land Use Designation**

Residential		5.7 ac
Supplemental Agriculture		0.0 ac
Subsistence Agriculture		0.0 ac
General Agriculture		0.0 ac
Pastoral		0.0 ac
Community Use		0.0 ac
Commercial		0.0 ac
Industrial		0.0 ac
Conservation		0.0 ac
Special District		0.0 ac
(no land use designated)		0.0 ac

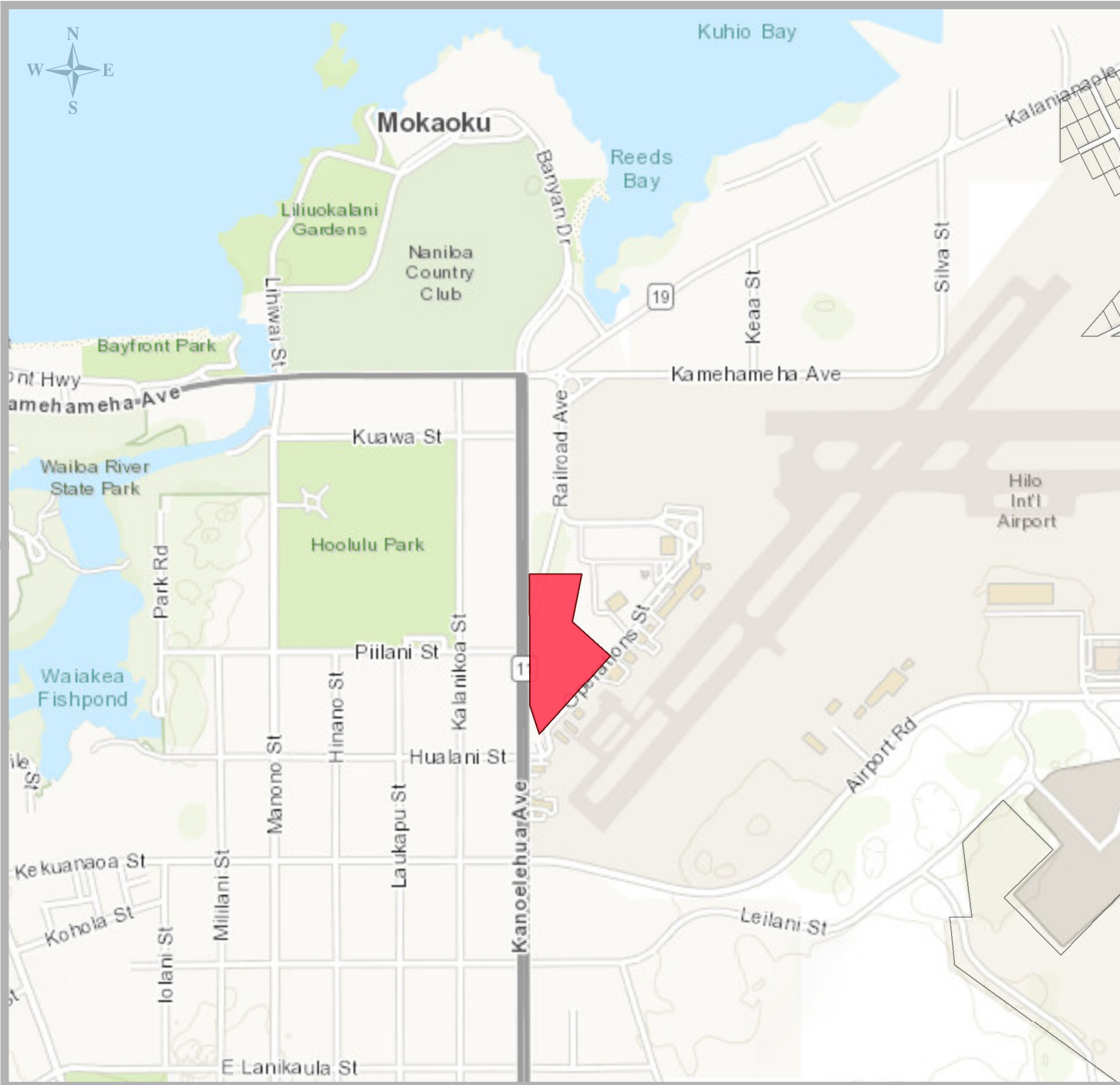
Total: 5.7 acres



**2002 Island Plan
Land Use Designation**

Residential		0.9 ac
Supplemental Agriculture		0.0 ac
Subsistence Agriculture		0.0 ac
General Agriculture		0.0 ac
Pastoral		0.0 ac
Community Use		0.0 ac
Commercial		0.0 ac
Industrial		0.0 ac
Conservation		0.0 ac
Special District		0.0 ac
(no land use designated)		0.0 ac

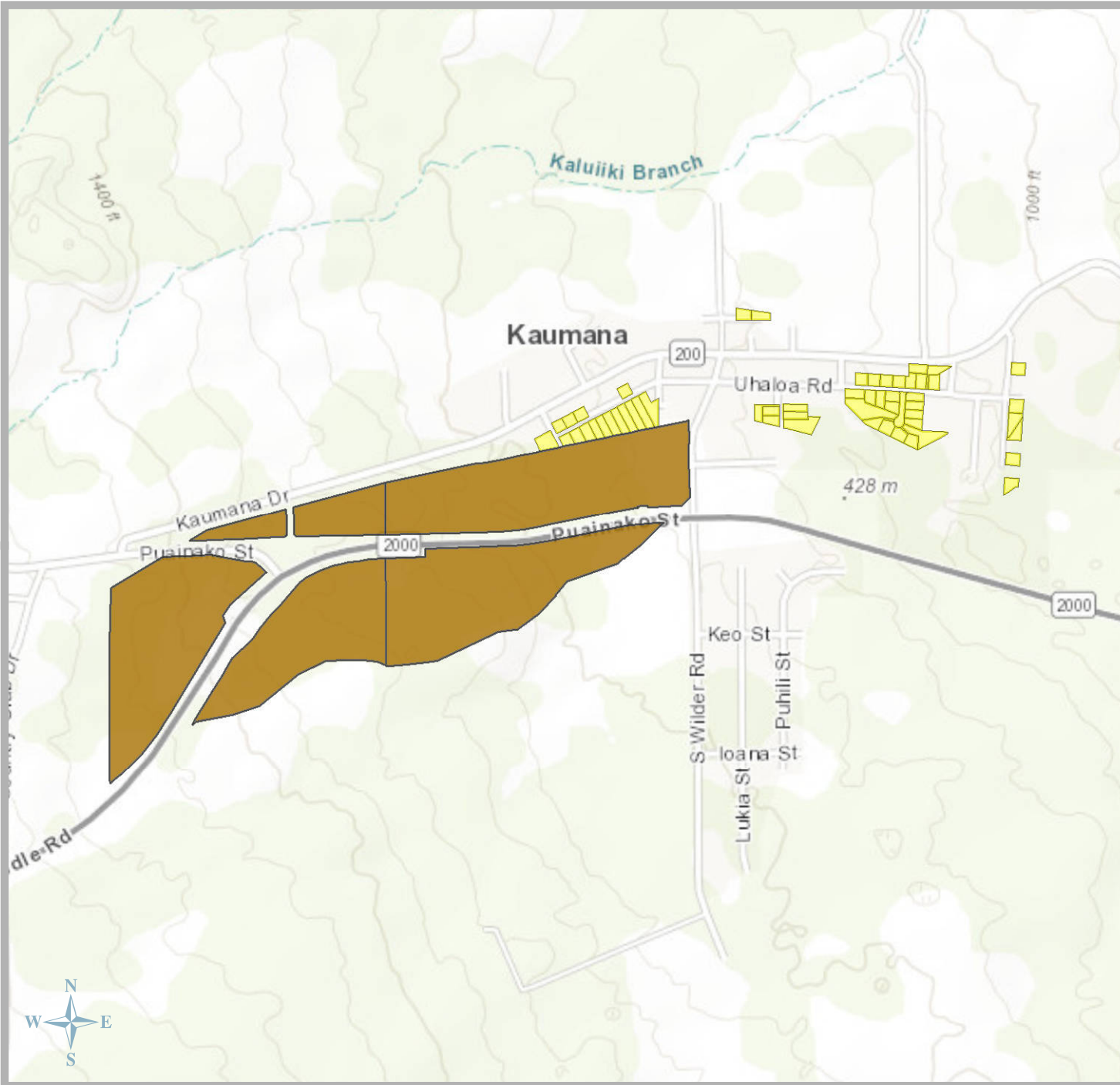
Total: 0.9 acres



2002 Island Plan Land Use Designation

Residential		0.0 ac
Supplemental Agriculture		0.0 ac
Subsistence Agriculture		0.0 ac
General Agriculture		0.0 ac
Pastoral		0.0 ac
Community Use		0.0 ac
Commercial		11.7 ac
Industrial		0.0 ac
Conservation		0.0 ac
Special District		0.0 ac
(no land use designated)		0.0 ac

Total: 11.7 acres

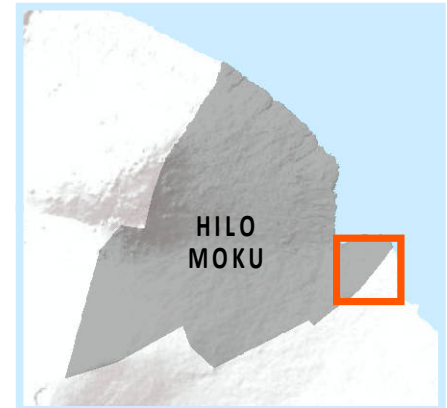
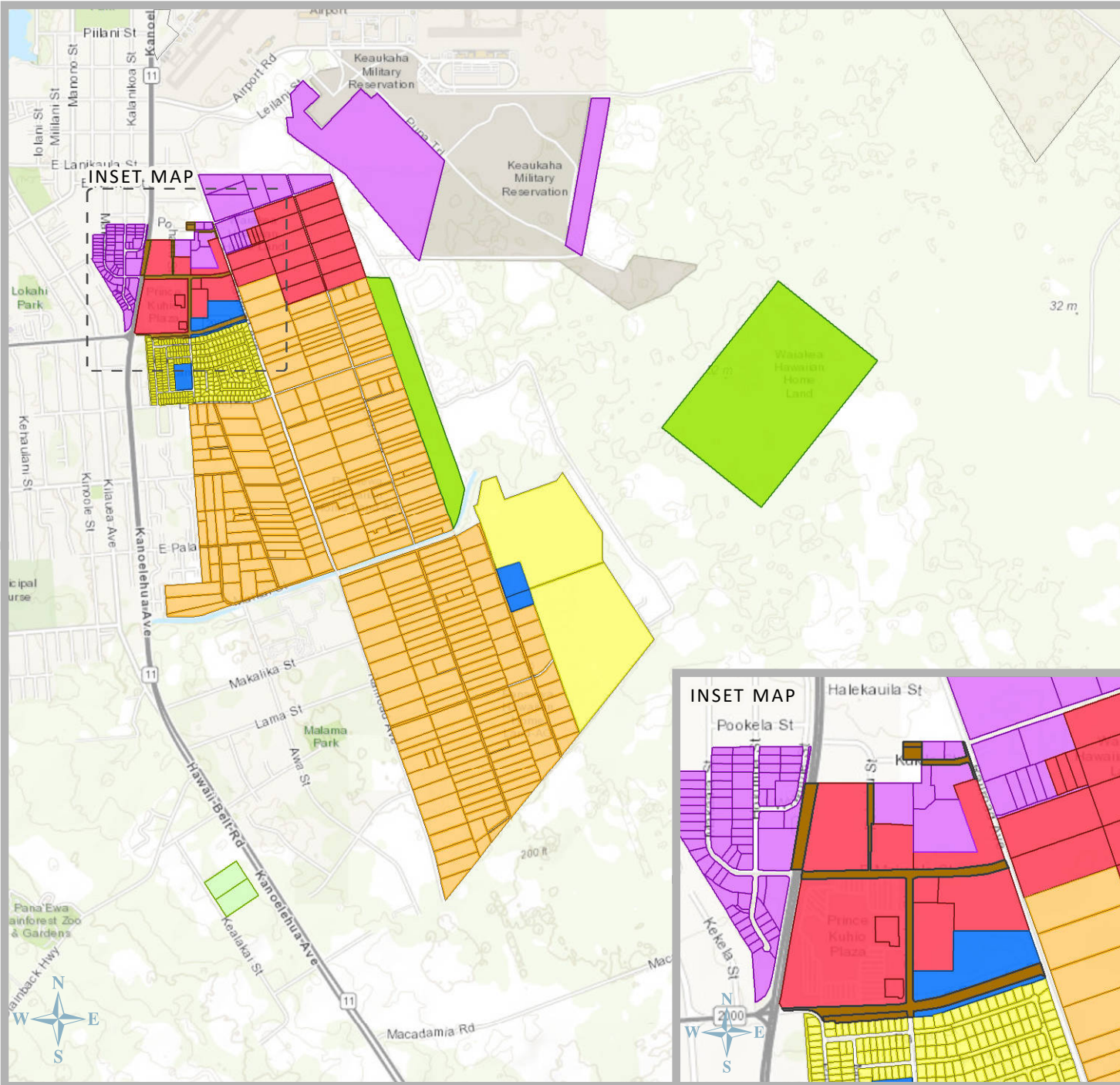


2002 Island Plan Land Use Designation

Residential		16.7 ac
Supplemental Agriculture		0.0 ac
Subsistence Agriculture		0.0 ac
General Agriculture		0.0 ac
Pastoral		0.0 ac
Community Use		0.0 ac
Commercial		0.0 ac
Industrial		0.0 ac
Conservation		0.0 ac
Special District		0.0 ac
(no land use designated)		120.6 ac

Total: 137.3 acres

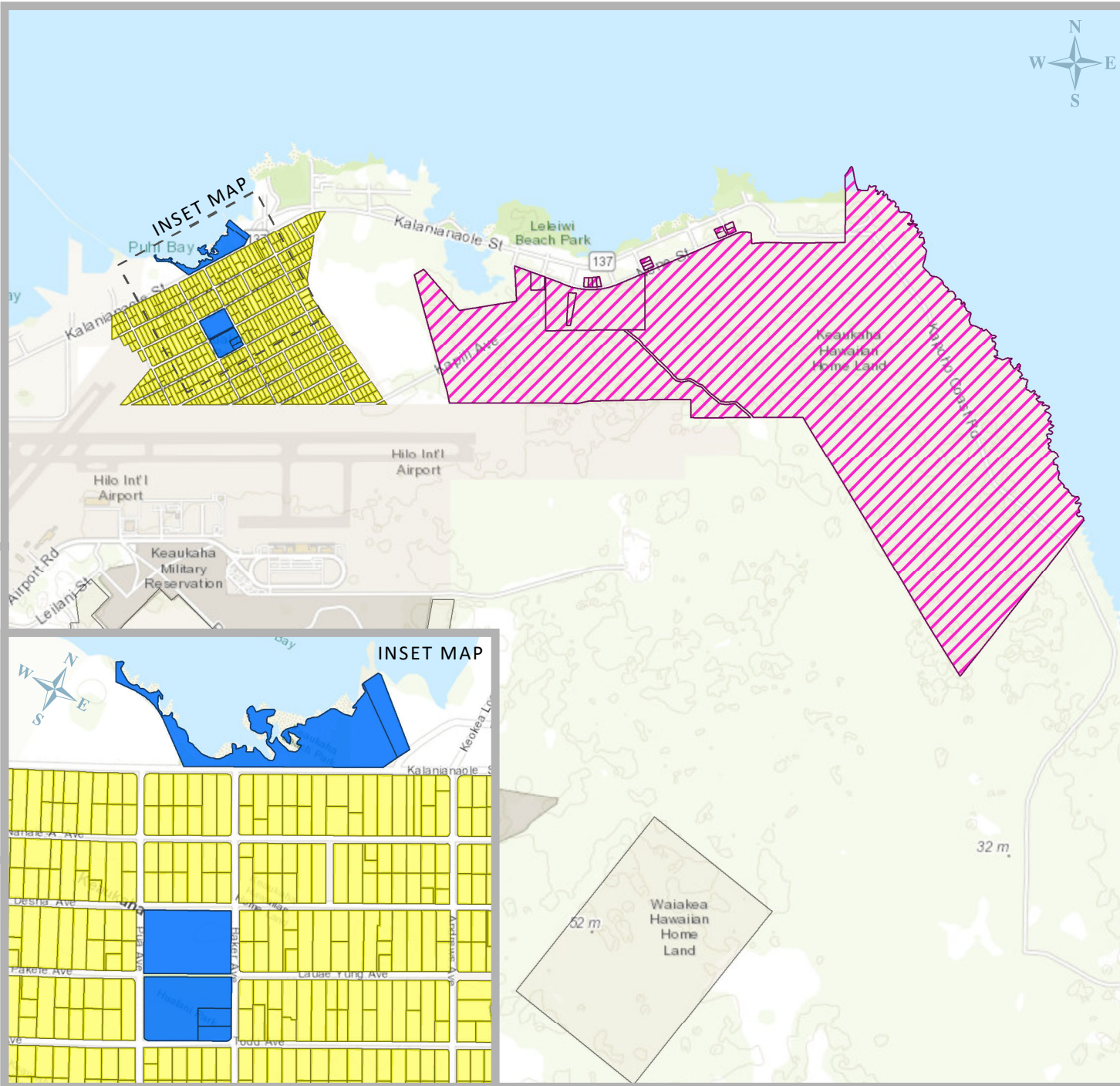
▶ PANA'EWA | HILO MOKU, HAWAI'I



**2002 Island Plan
Land Use Designation**

Residential		423.1 ac
Supplemental Agriculture		1,596.6 ac
Subsistence Agriculture		462.4 ac
General Agriculture		23.3 ac
Pastoral		0.0 ac
Community Use		39.7 ac
Commercial		232.6 ac
Industrial		358.4 ac
Conservation		0.0 ac
Special District		0.0 ac
(no land use designated)		26.1 ac

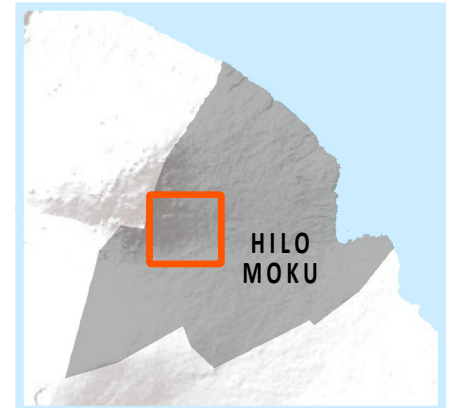
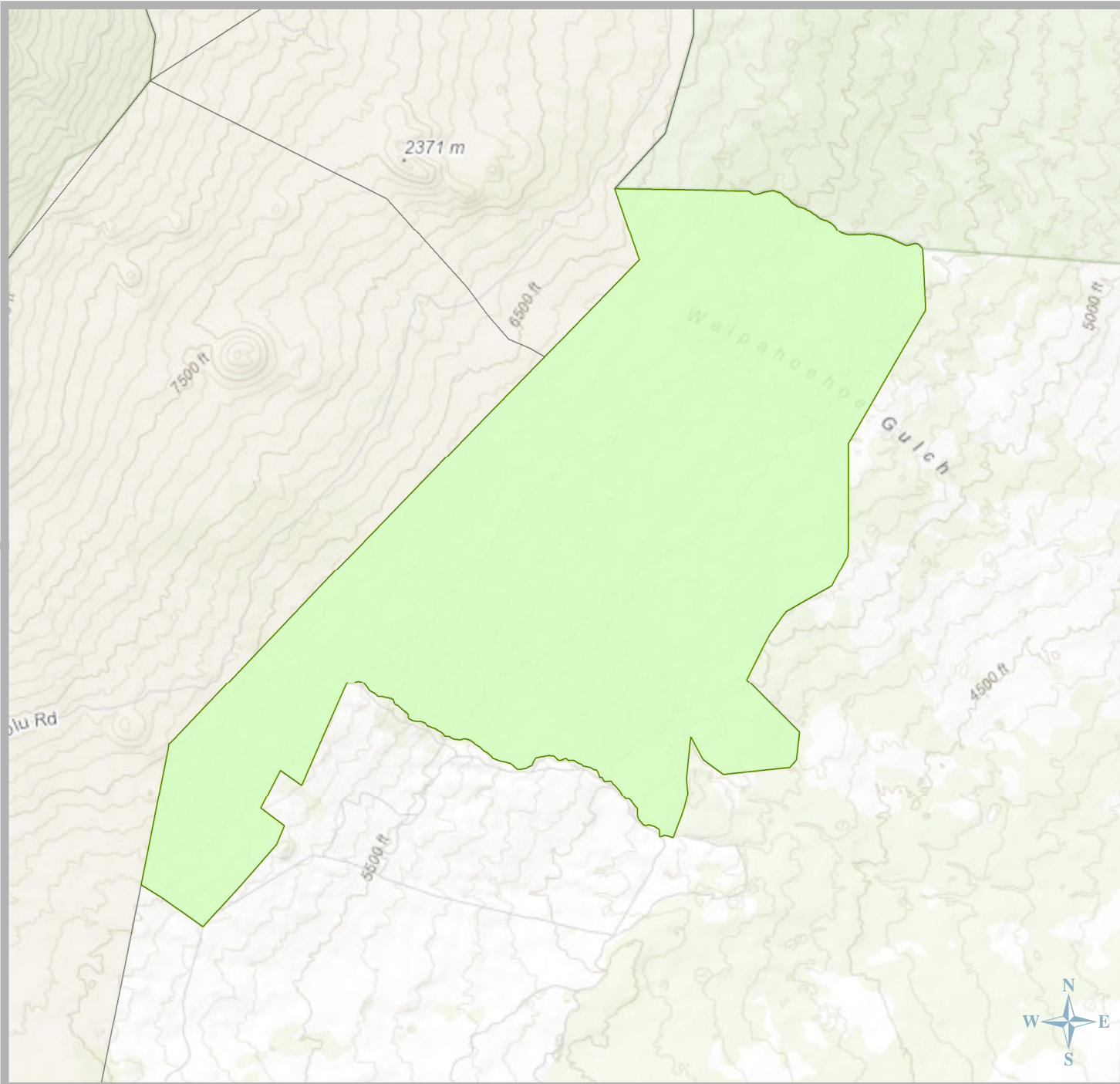
Total: 3,162.2 acres



**2002 Island Plan
Land Use Designation**

Residential		267.3 ac
Supplemental Agriculture		0.0 ac
Subsistence Agriculture		0.0 ac
General Agriculture		0.0 ac
Pastoral		0.0 ac
Community Use		23.2 ac
Commercial		0.0 ac
Industrial		0.0 ac
Conservation		0.0 ac
Special District		1,328.0 ac
(no land use designated)		0.0 ac

Total: 1,618.5 acres

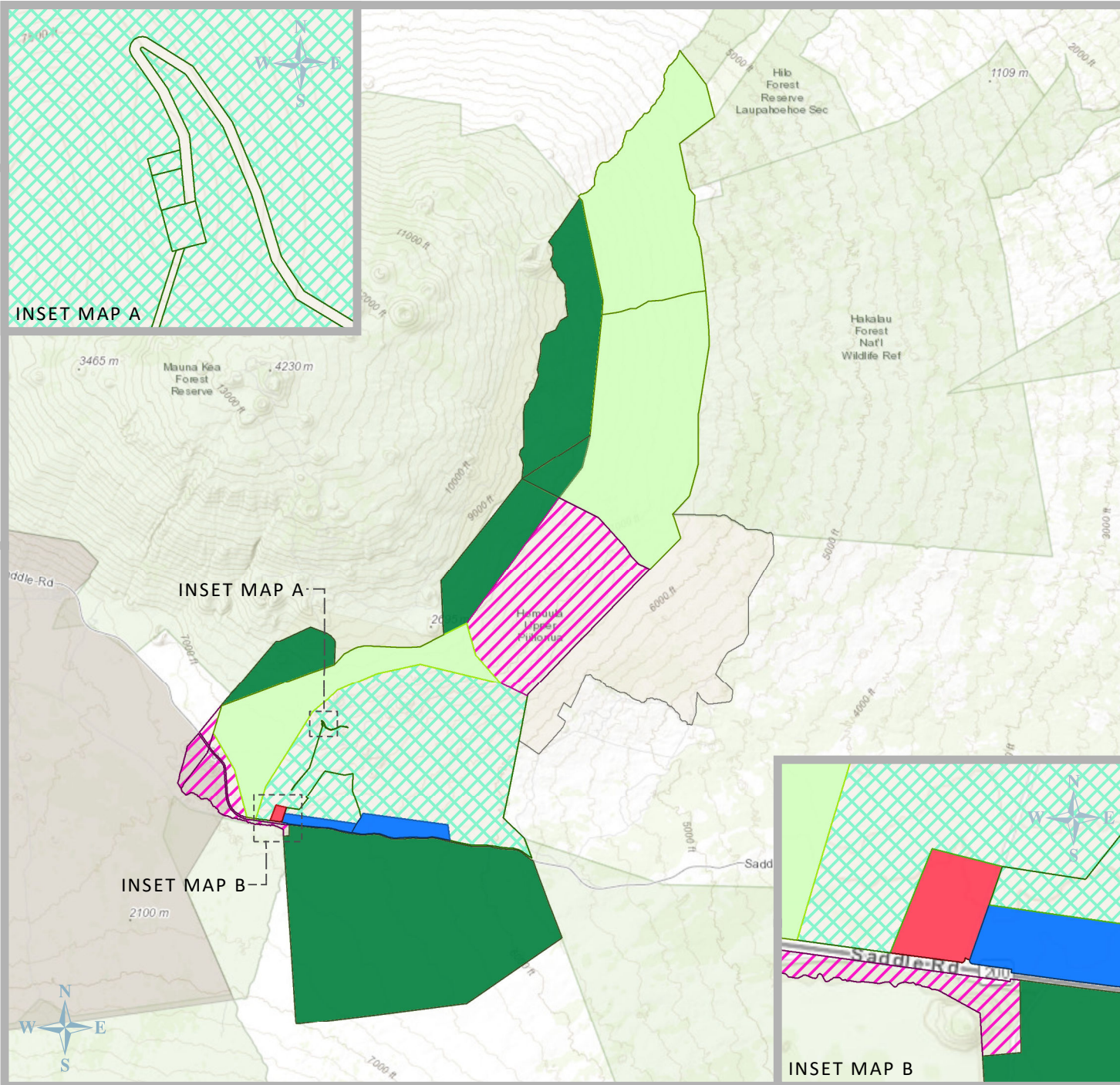


2002 Island Plan Land Use Designation

Residential		0.0 ac
Supplemental Agriculture		0.0 ac
Subsistence Agriculture		0.0 ac
General Agriculture		7,078.0 ac
Pastoral		0.0 ac
Community Use		0.0 ac
Commercial		0.0 ac
Industrial		0.0 ac
Conservation		0.0 ac
Special District		0.0 ac
(no land use designated)		0.0 ac

Total: 7,078.0 acres

HUMU'ULA | HILO MOKU, HAWAI'I



**2002 Island Plan
Land Use Designation**

Residential		0.0 ac
Supplemental Agriculture		0.0 ac
Subsistence Agriculture		0.0 ac
General Agriculture		15,699 ac
Pastoral		9,023.1 ac
Community Use		601.0 ac
Commercial		47.9 ac
Industrial		0.0 ac
Conservation		17,641.1 ac
Special District		5,907.4 ac
(no land use designated)		0.0 ac

Total: 48,919.5 acres