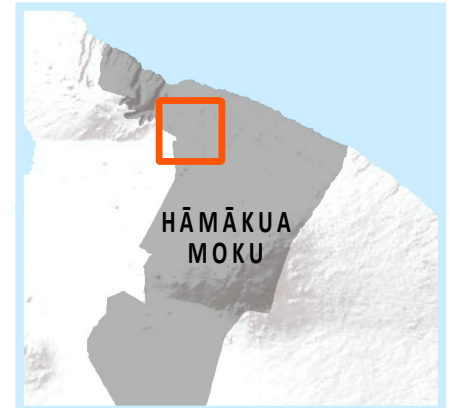
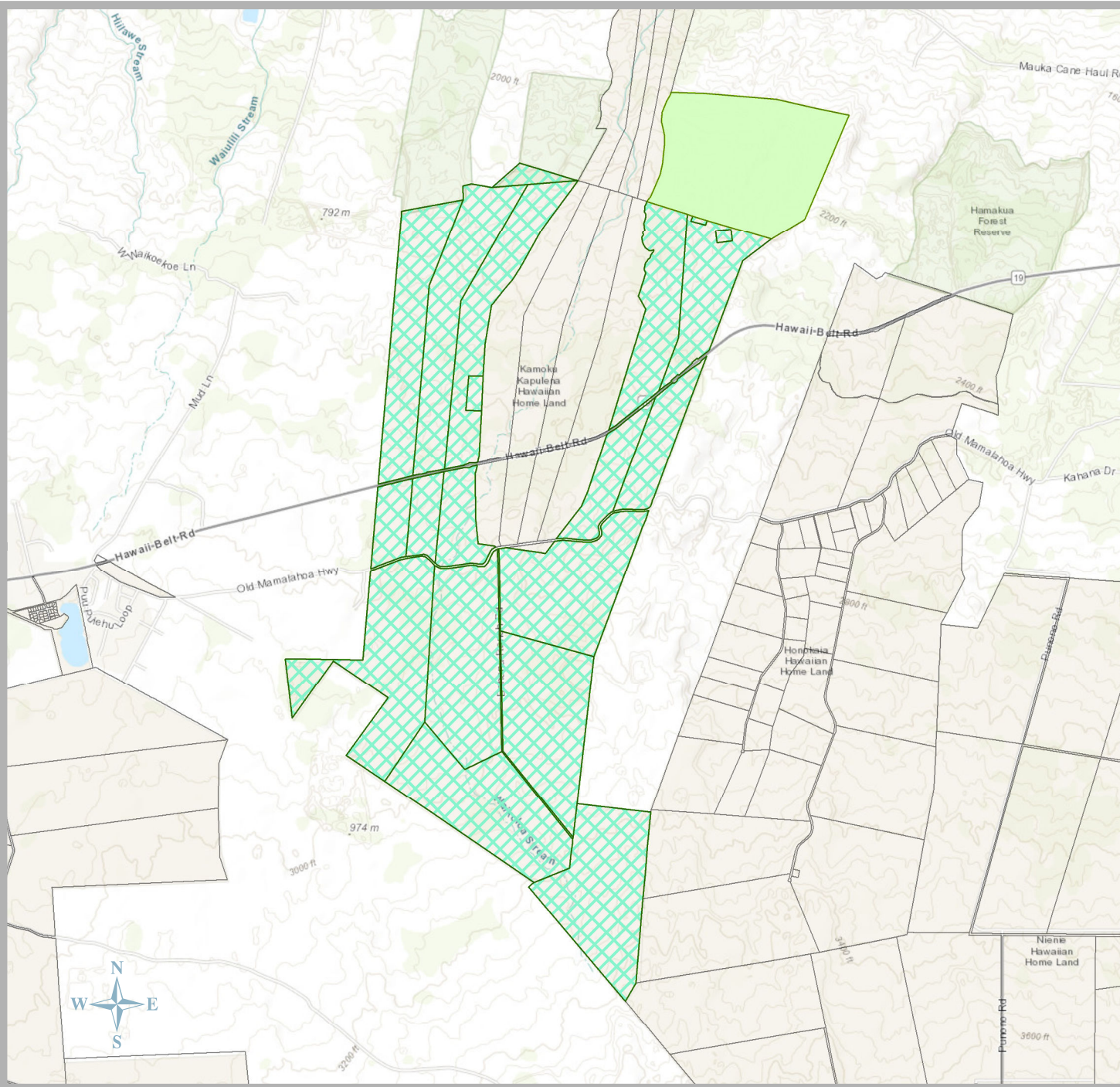


KAMOKU-KAPULENA | HĀMĀKUA MOKU, HAWAII

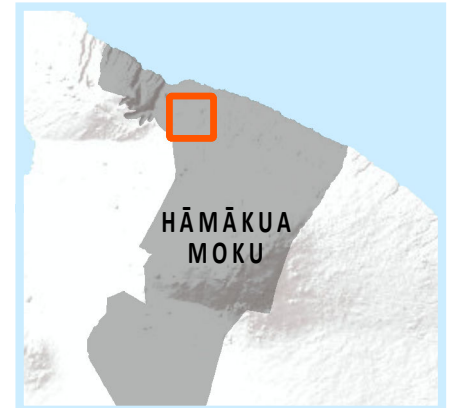
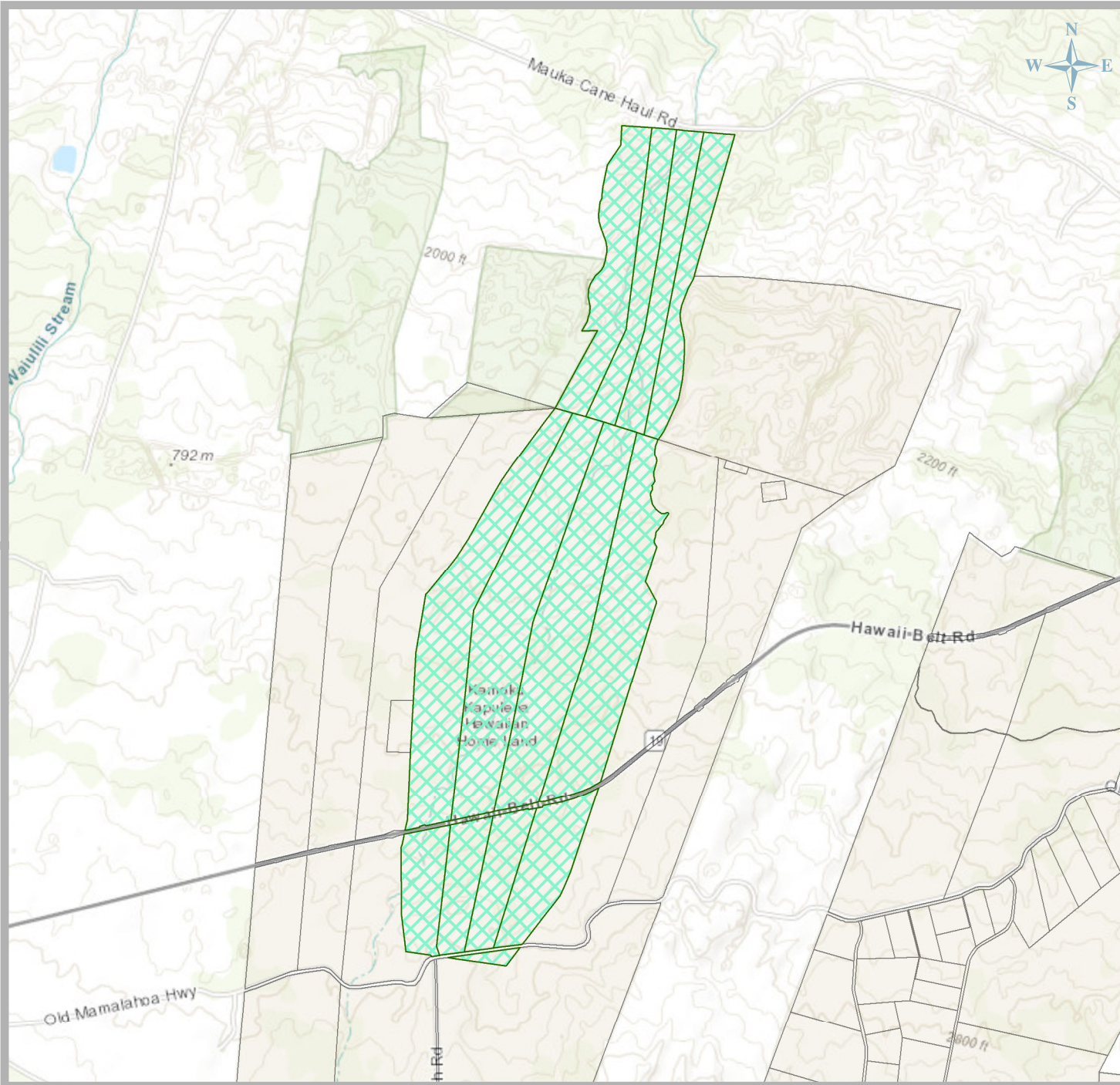


**2002 Island Plan
Land Use Designation**












Residential		0.0 ac
Supplemental Agriculture		0.0 ac
Subsistence Agriculture		0.0 ac
General Agriculture		441.8 ac
Pastoral		3,087.6 ac
Community Use		0.0 ac
Commercial		0.0 ac
Industrial		0.0 ac
Conservation		0.0 ac
Special District		0.0 ac
(no land use designated)		0.0 ac

Total: 3,529.4 acres

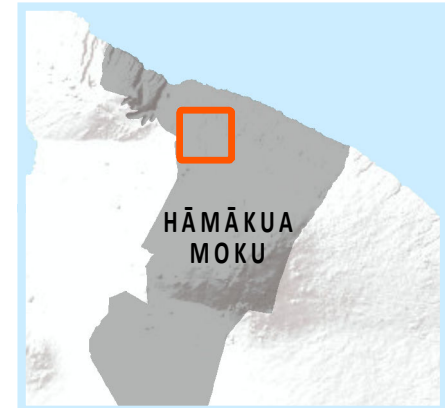
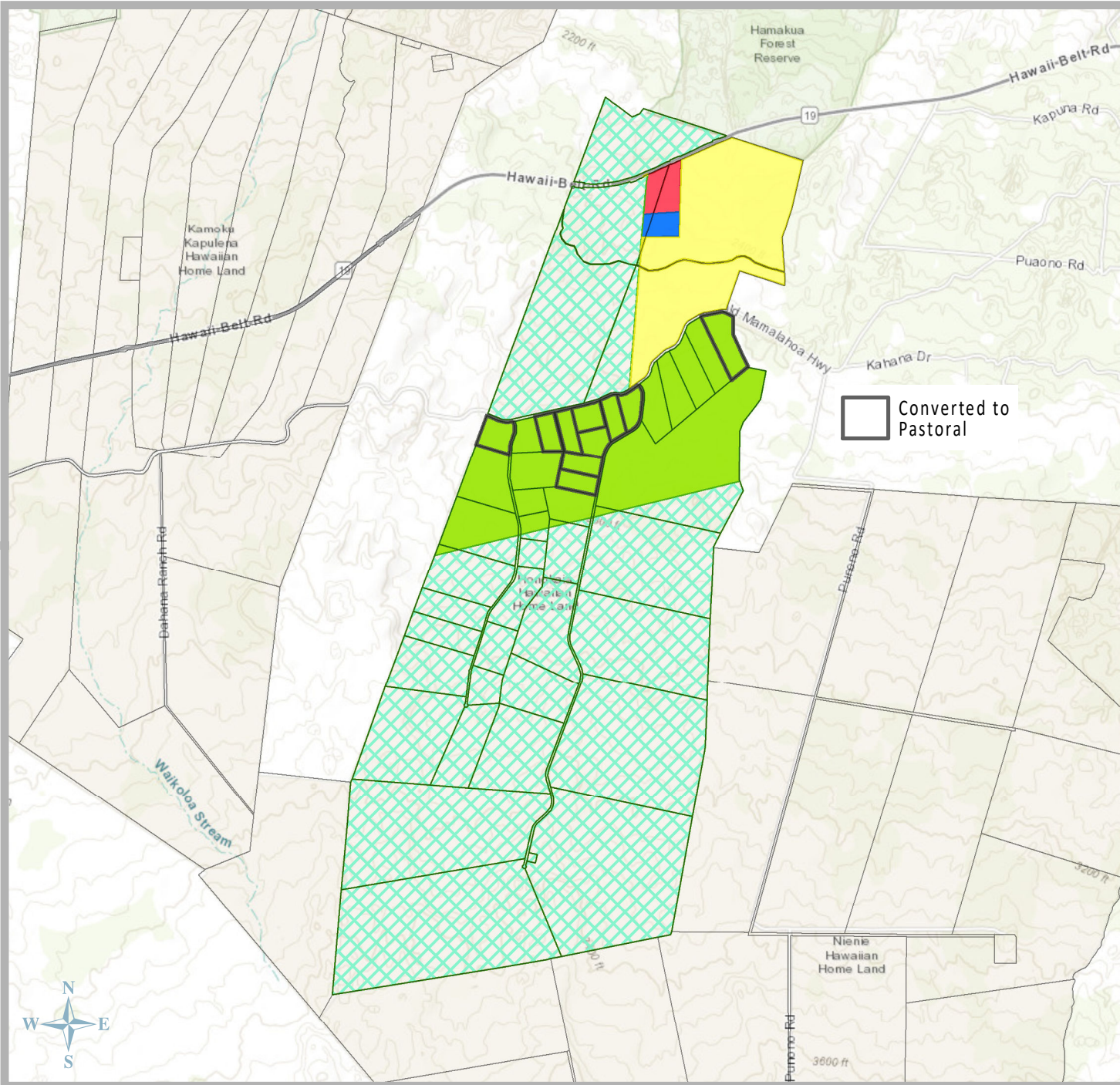
WAIKOLOA-WAI'ALE'ALE | HĀMĀKUA MOKU, HAWAII














**2002 Island Plan
Land Use Designation**

Residential		0.0 ac
Supplemental Agriculture		0.0 ac
Subsistence Agriculture		0.0 ac
General Agriculture		0.0 ac
Pastoral		1,206.0 ac
Community Use		0.0 ac
Commercial		0.0 ac
Industrial		0.0 ac
Conservation		0.0 ac
Special District		0.0 ac
(no land use designated)		0.0 ac

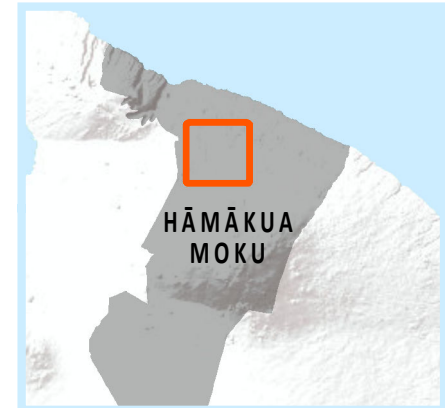
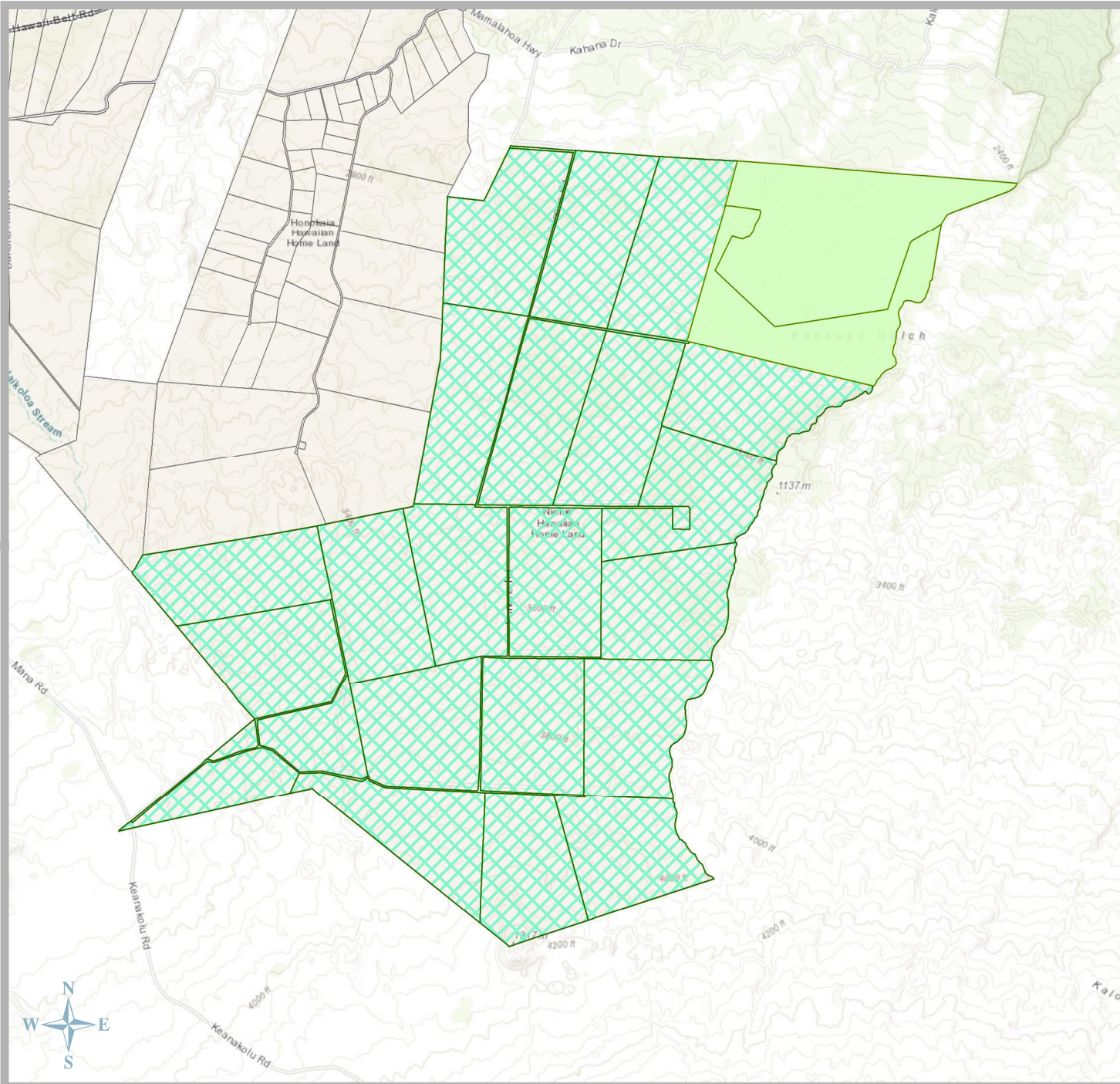
Total: 1,206.0 acres



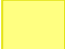










2002 Island Plan Land Use Designation

Residential		295.6 ac
Supplemental Agriculture		0.0 ac
Subsistence Agriculture		512.3 ac
General Agriculture		0.0 ac
Pastoral		2,372.8 ac
Community Use		12.1 ac
Commercial		21.2 ac
Industrial		0.0 ac
Conservation		0.0 ac
Special District		0.0 ac
(no land use designated)		0.0 ac

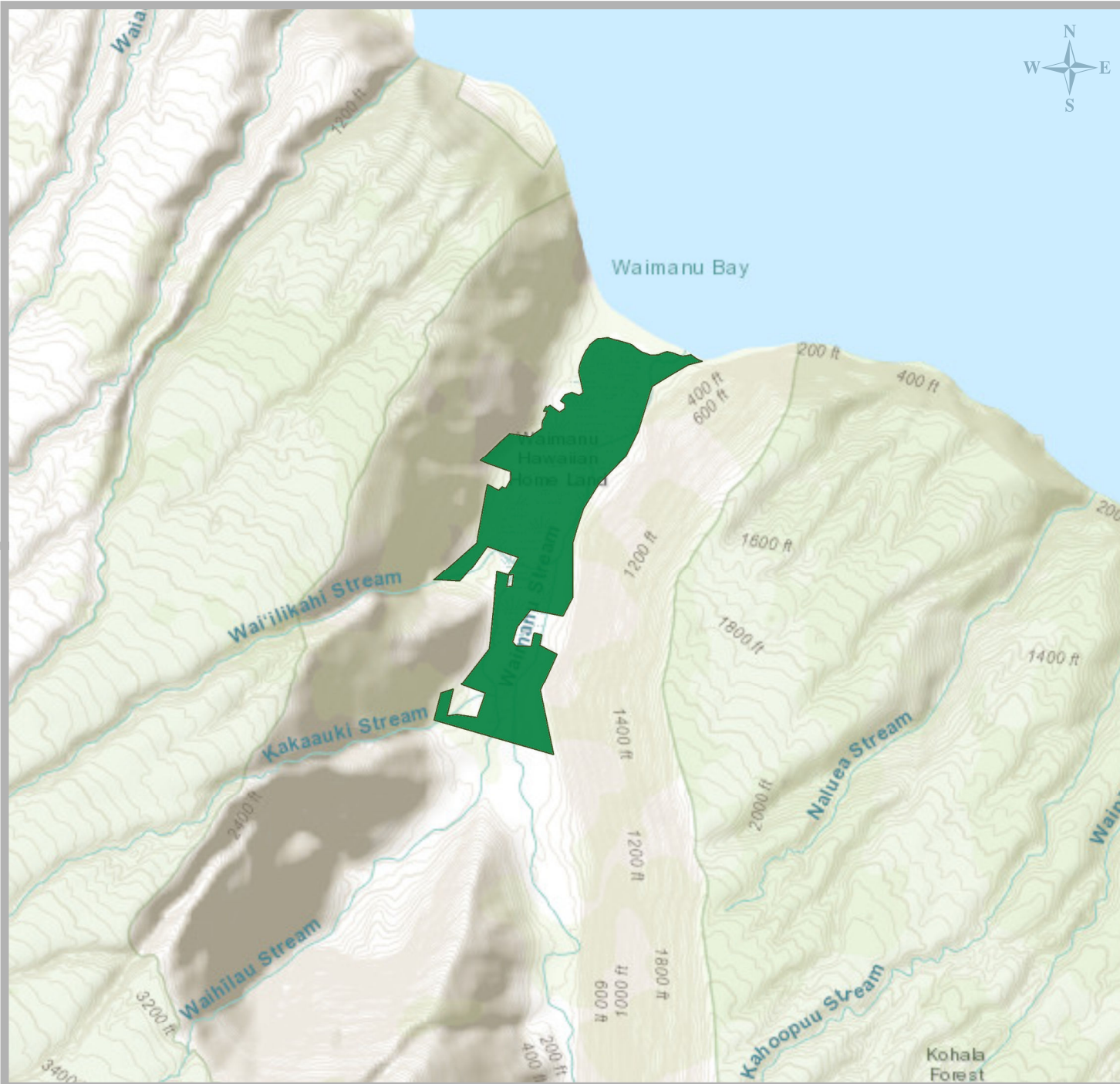
Total: 3,214.0 acres






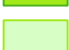







**2002 Island Plan
Land Use Designation**

Residential		0.0 ac
Supplemental Agriculture		0.0 ac
Subsistence Agriculture		0.0 ac
General Agriculture		918.0 ac
Pastoral		6,244.4 ac
Community Use		0.0 ac
Commercial		0.0 ac
Industrial		0.0 ac
Conservation		0.0 ac
Special District		0.0 ac
(no land use designated)		0.0 ac

Total: 7,162.4 acres



**2002 Island Plan
Land Use Designation**

Residential		0.0 ac
Supplemental Agriculture		0.0 ac
Subsistence Agriculture		0.0 ac
General Agriculture		0.0 ac
Pastoral		0.0 ac
Community Use		0.0 ac
Commercial		0.0 ac
Industrial		0.0 ac
Conservation		200.0 ac
Special District		0.0 ac
(no land use designated)		0.0 ac

Total: 200.0 acres