



HAWAIIAN HOME LANDS  
HAWAIIAN HOMES COMMISSION  
DEPARTMENT OF HAWAIIAN HOME LANDS

# WAIMĀNALO

## Regional Plan Update

---

Beneficiary Consultation #3  
April 15, 2024

# Tonight's Agenda

- 6:00 pm Sign-in / 'Aina ahiahi
- 6:15 pm Welina, Pule & Introductions
- 6:20 pm Presentation – Review & Confirm Community Values/Vision
- 6:40 pm Review Past Priority Projects & Discussion
- 6:55 pm *5 MIN BREAK*
- 7:00 pm Breakout Discussions– Project Identification
- 7:20 pm *10 MIN BREAK*
- 7:30 pm Group Discussion – Consolidating Project List
- 7:55 pm Closing & Next Steps

# Team Introductions



## DHHL Planning Office Team:

- Andrew Choy (Planning Program Manager)
- Lillie Makaila (Project Manager, Planner)



## Consultant Team (SSFM International):

- Malachi Krishok (Project Manager, Planner)
- Jena Kamalani Earle (Planner)

### SSFM Experience/Related Projects:

- DHHL General Plan Update (completed 2022)
- DHHL Anahola Regional Plan Update (completed 2022)
- Keeping Waimānalo  
Waimānalo: Community Values & Priorities for the Future (completed 2017)

# Tonight's Discussion Kuleana

- **Be Open:** open your mind & ears to new and different ideas and information.
- **Be comfortable:** move around freely and use the facilities.
- **Be Respectful:** please do not interrupt the person that is talking, bring aloha into our interactions & our words.
- **Be Creative:** work towards future solutions/aspirations.
- **Agree to Disagree:** accept that others may have different perspectives and opinions, but this is still one community.
- **Cellphones off or on silent:** please take calls/texts outside.

# Tonight's Meeting Objectives

1. Confirm Community Values & Vision
2. Create a list of project ideas
3. Refine the list of projects as close to ten (10) as possible

\*only FIVE (5) will be included in the Plan, so we want to try to make voting for the top five projects easier

# What is a Regional Plan Update?

## WAIMĀNALO



## REGIONAL PLAN

November 2011

DEPARTMENT OF HAWAIIAN HOME LANDS



- Homestead Regional Profile
- Regional Lands & Development
- Infrastructure
- Homestead Concerns & Priorities
- Vision Statement & Community Values for Region
- Implementation Action Steps for each Priority Project

# Beneficiary Consultations #1 & 2

- Discussed COMMUNITY VALUES
  - Created a DRAFT VISION STATEMENT
  - Shared ISSUES & CONCERNS for the homestead & region
  - Began sharing potential PROJECT IDEAS
  - Asked QUESTIONS of DHHL staff about various topics
- \*we have prepared some handouts based on those questions, we will discuss AT THE END of tonight's meeting*
- FEEDBACK: need to keep to the time & keep people on topic
- \*We will try to do better tonight!*

# CONFIRM: Draft Community Values

## Keep Waimānalo Waimānalo

- Country living
- God's country
- Rural character & paniolo lifestyle
- Creating homesteads for Waimānalo beneficiaries

## Keep Lands in Beneficiary Hands

- Beneficiaries have access to HHL in the region
- Beneficiaries are involved in the stewardship of HHL
- Create affordable & consistently priced opportunities for beneficiaries to access lands identified for non-homesteading uses

## Sust'Āinability

- Promote sustainable living
- 'Āina-focused
- Access to agricultural lands
- Community gardens & agricultural spaces
- Site residential and agricultural lands together

## Resiliency

- Disaster preparedness & emergency response capacity
- Emergency shelter for beneficiaries
- Adaptation measures for climate change
- Resilient development & design for future homesteads & infrastructure

## Culture & History

- Teaching community from keiki to kūpuna
- Perpetuate & preserve Native Hawaiian rights
- Share the history of Hawaiian Home Lands
- Perpetuate 'ike for future generations

## 'Auamo Kuleana

- DHHL will have better communication & more transparency
- Kūkulu pilina – to build relationships within the community and to create relationships outside of the community in order to bring more needed services to Waimānalo
- Provide more options for services in Waimānalo (social, legal, education, financial literacy, etc.)

## Grow Community Assets

- Support the creation and growth of beneficiary businesses
- Create more opportunities for commercial/business uses for beneficiaries on HHL in Waimānalo
- Help to grow the capacity of Waimānalo beneficiaries & beneficiary and native-serving organizations

## Mālama Kūpuna

- Prioritize our Waimānalo kūpuna on the DHHL waitlist
- Increase resources and services for kūpuna
- Keep them in Waimānalo/Age in place ( kūpuna housing, etc.)



# CONFIRM: Draft Vision Statement

**“To honor the Native Hawaiian people, their culture, history, and their deep connection to the land, Waimānalo is committed to safeguarding, nurturing, and preserving our ahupua‘a for future generations. Embracing our rural identity and traditional way of life, which has been passed down through the generations, we are dedicated to ‘auamo the responsibility entrusted to us by our ancestors. As we navigate towards sustainable progress, our unwavering commitment is to ensure that Waimānalo remains true to its essence, always staying rooted in its unique identity.”**

An aerial photograph of a coastal town and mountains. The foreground shows a sandy beach and turquoise water. The middle ground features a town with buildings and green fields. The background consists of large, rugged mountains with a distinct layered appearance. The entire image has a light blue and green color overlay.


# Previous Priority Projects

TIME CHECK: 6:40PM

# Priority Projects & Status

RP Yr.	Project Name	Status
	<p><b>Wong Farm Acquisition &amp; Relocation</b></p>	<p>DHHL selected the Wong Farm parcel as part of the settlement under Act 14. In 2018, DHHL completed the process to acquire a 50-acre parcel commonly known as “Wong Farm” from the Department of Land and Natural Resources. Planning and environmental compliance is currently underway.</p>
	<p><b>Kumuhau/Kaka’ina Street Residential Development</b></p>	<p>In 2006 DHHL issued 50 undivided interest leases for Kumuhau and 45 for Kaka’ina. Infrastructure was completed, turnkey homes, and vacant lots have been awarded. Most recently, 15 vacant lots were awarded in Kaka’ina.</p>
<p>2008/ 2011</p>	<p><b>Waikupanaha Improvements/Ilauhole Street Extension</b></p>	<p>The project remained a priority in 2008 and 2011 because of potential to serve as an emergency evacuation route. Funding for this project did not materialize, however WHHA was able to obtain funding through the CTEEC project for construction of the road from Ilauhole Street to the parking lot of CTEEC.</p>
	<p><b>CTEEC/Waimānalo Business Park (Industrial/Technology)</b></p>	<p>WHHA completed construction of its Community Technology, Education and Employment Center (CTEEC) in 2015. The CTEEC is in Phase IV of the WHHA’s Ka Ho’olina Na Kūhiō Community Center.</p>

# Priority Projects & Status

RP Yr.	Project Name	Status
	<b>Emergency Evacuation Plan</b>	Waimānalo was the first recognized community that completed HHARP. The program was facilitated in 2014-2016 where over 150 community members and 20 ham radio operators were trained over the course of the two years,
2011	<b>Hawaiian Cultural Learning Center</b>	Nā Pualei O Likolehua, a hālau hula led by Kumu Hula Leina‘ala Kalama Heine, sought long-term use of DHHL land overlooking Kaupō Beach Park for the center. In 2016, DHHL completed a rock fall mitigation feasibility study for the same site that the hālau requested a long-term use agreement. The rock fall mitigation measures which were suggested in the study are exceedingly expensive.
2011	<b>HPD Satellite Office</b>	Funding for the HPD project did not materialize and the project is not being pursued.
2011	<b>Support &amp; Develop Affordable &amp; Obtainable Homestead Alternatives in Waimānalo</b>	This project urged DHHL to explore alternative developments in Waimānalo, such as rental and multi-family housing, to address beneficiary needs more efficiently. The DHHL has been analyzing various affordable housing alternatives, including rentals as well as providing financial literacy services.

TIME CHECK: 6:55PM

**BREAK (5 mins)**

**NEXT: Breakout - Project Idea  
Discussions**

Based on the COMMUNITY VALUES pairings

# Project Ideas & Discussion Groups

- 1. Resiliency / Sust'Āinability**  
(Facilitator: Andrew)
- 2. 'Auamo Kuleana / Grow Community Assets**  
(Facilitator: Malachi)
- 3. Keep Waimānalo Waimānalo / Keep Land in Beneficiary Hands**  
(Facilitator: Lillie)
- 4. Culture and History / Mālama Kūpuna**  
(Facilitator: Jena)

# Community Values

## Keep Waimānalo Waimānalo

- Country living
- God's country
- Rural character & paniolo lifestyle
- Creating homesteads for Waimānalo beneficiaries

## Keep Lands in Beneficiary Hands

- Beneficiaries have access to HHL in the region
- Beneficiaries are involved in the stewardship of HHL
- Create affordable & consistently priced opportunities for beneficiaries to access lands identified for non-homesteading uses

## Sust'Āinability

- Promote sustainable living
- 'Āina-focused
- Access to agricultural lands
- Community gardens & agricultural spaces
- Site residential and agricultural lands together

## Resiliency

- Disaster preparedness & emergency response capacity
- Emergency shelter for beneficiaries
- Adaptation measures for climate change
- Resilient development & design for future homesteads & infrastructure

## Culture & History

- Teaching community from keiki to kūpuna
- Perpetuate & preserve Native Hawaiian rights
- Share the history of Hawaiian Home Lands
- Perpetuate 'ike for future generations

## 'Auamo Kuleana

- DHHL will have better communication & more transparency
- Kūkulu pilina – to build relationships within the community and to create relationships outside of the community in order to bring more needed services to Waimānalo
- Provide more options for services in Waimānalo (social, legal, education, financial literacy, etc.)

## Grow Community Assets

- Support the creation and growth of beneficiary businesses
- Create more opportunities for commercial/business uses for beneficiaries on HHL in Waimānalo
- Help to grow the capacity of Waimānalo beneficiaries & beneficiary and native-serving organizations

## Mālama Kūpuna

- Prioritize our Waimānalo kūpuna on the DHHL waitlist
- Increase resources and services for kūpuna
- Keep them in Waimānalo/Age in place ( kūpuna housing, etc.)

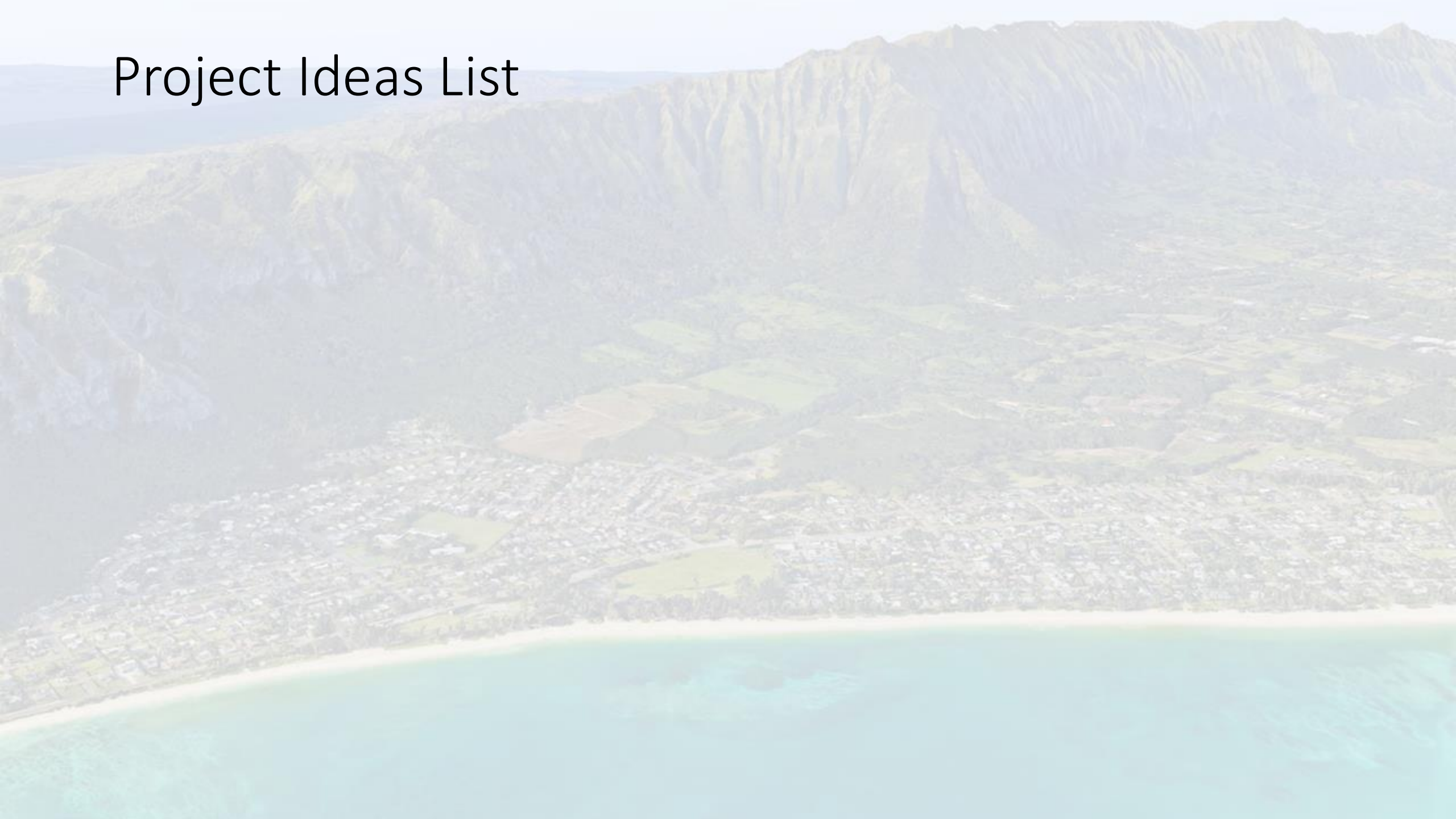
TIME CHECK: 7:20PM

# REPORT BACK

## Refine Projects List

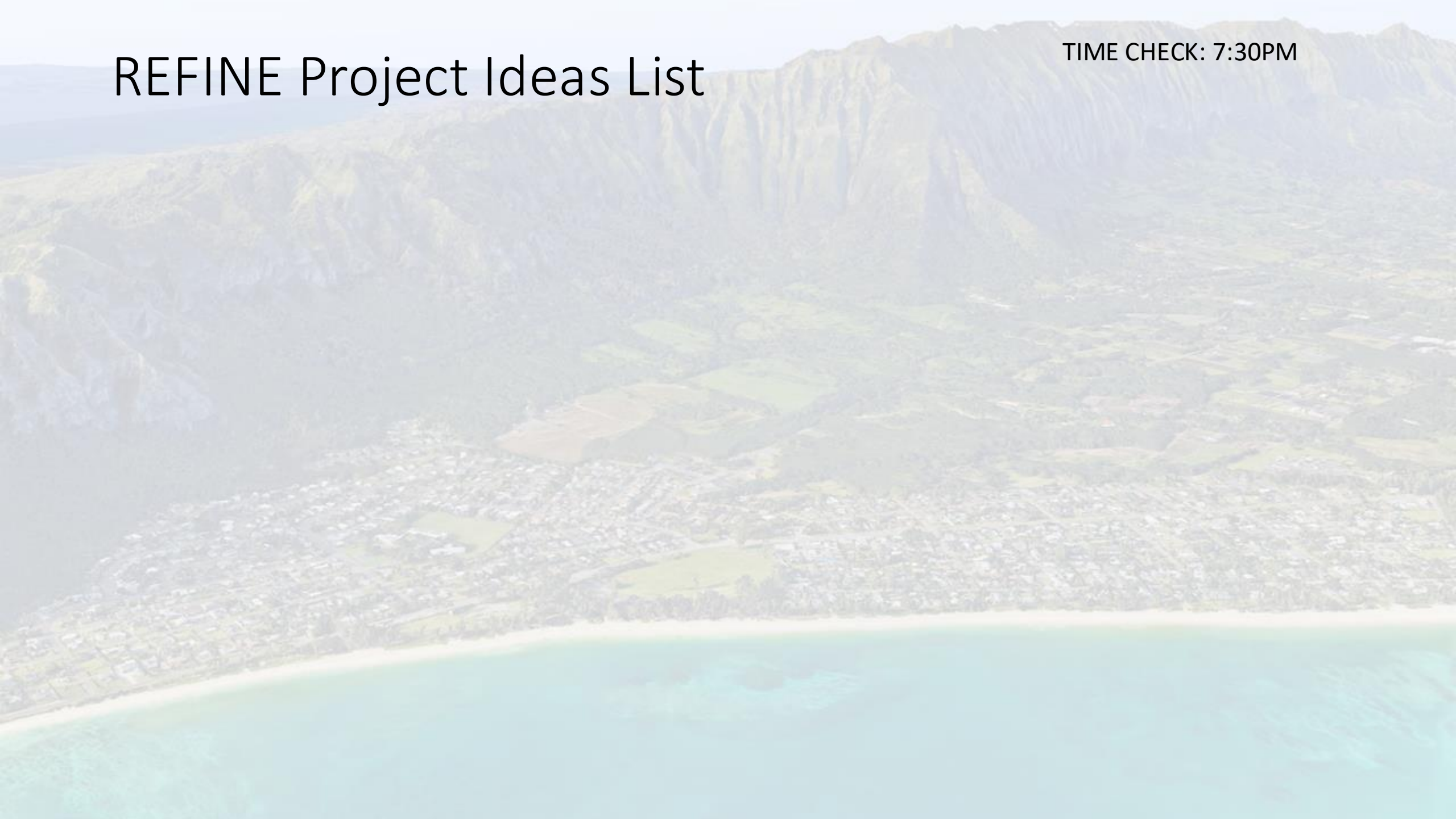


# Project Ideas List



# REFINE Project Ideas List

TIME CHECK: 7:30PM



An aerial photograph of a coastal town and mountains. The foreground shows a sandy beach and turquoise water. The middle ground features a town with buildings and green fields. The background consists of large, rugged mountains with a distinct layered appearance. The text "Closing & Next Steps" is overlaid in the center-left of the image.

# Closing & Next Steps

# Next Steps

- Priority Project Selection
  - Priority Project Selection Survey: VOTING OPEN 4/22-5/5
  - Hardcopies will be dropped off to WHHA *\*Lillie to coord. w/WHHA*
  - MUST SELF IDENTIFY to have your votes counted
  - Voting results will be shared via email week of May 13th and posted to project website
- Next meeting – Draft Plan Review on Monday, July 8, 2024 from 6:00 to 8:00 pm at the WHHA Hālau *\*expect postcards & emails*

***Project team is always available if anyone have questions or comments***

# Project Schedule



**Beneficiary Mtgs:**

**Meeting #4: July 8, 2024**

# Mahalo!

For more information contact:



Lillie Makaila, Planner

[lilliane.k.makaila@hawaii.gov](mailto:lilliane.k.makaila@hawaii.gov)

(808) 620-9484



Malachi Krishok, Planner

[mkrishok@ssfm.com](mailto:mkrishok@ssfm.com)

(808) 356-1272

Visit the project website



Scan QR code or  
visit the URL below:

<https://dhhl.hawaii.gov/po/waimanalo-regional-plan-update-2024/>