



HAWAIIAN HOME LANDS
HAWAIIAN HOMES COMMISSION
DEPARTMENT OF HAWAIIAN HOME LANDS

WAIMĀNALO

Regional Plan Update

Beneficiary Consultation #2

April 1, 2024

Tonight's Agenda

- 6:00 pm Sign-in
- 6:30 pm Welina, Pule & Introductions
- 6:40 pm Presentation – Regional Plan Process, Meeting 1 Review
- 6:50 pm Community Values & Visioning Activity Breakouts
Breakout Discussion 1 – Community Values & Vision
REPORT BACK
- 7:15 pm Breakout Discussion 2 – Issues, Opportunities & Resources
REPORT BACK
- 7:55 pm Closing & Next Steps

Team Introductions



DHHL Planning Office Team:

- Lillie Makaila (Project Manager, Planner)
- Ku'upua Kiyuna (NAHASDA Planner/Cultural Resource Specialist)



Consultant Team (SSFM International):

- Melissa May (Principal-in-charge)
- Malachi Krishok (Project Manager, Planner)
- Jena Earle (Planner)

SSFM Experience/Related Projects:

- DHHL General Plan Update (completed 2022)
- DHHL Anahola Regional Plan Update (completed 2022)
- Keeping Waimānalo Waimānalo: Community Values & Priorities for the Future (completed 2017)

Tonight's Discussion Kuleana

- **Be Open:** open your mind, ears and heart. Take home new ideas and information.
- **Be comfortable:** move around and use facilities.
- **Be Respectful:** please do not interrupt the person that is talking, show aloha, treat others how you would like to be treated.
- **Be Creative:** work towards future solutions/aspirations.
- **Agree to Disagree:** accept that others may have different perspectives and opinions.
- **Cellphones off or on silent:** please take calls/texts outside.

Tonight's Meeting Objectives

- Address questions and requests for information from meeting #1
- Receive feedback on draft community values and create a vision statement for Waimānalo
- Document issues, opportunities and existing community resources and assets
- Compile initial list of projects for further consideration

Project Schedule

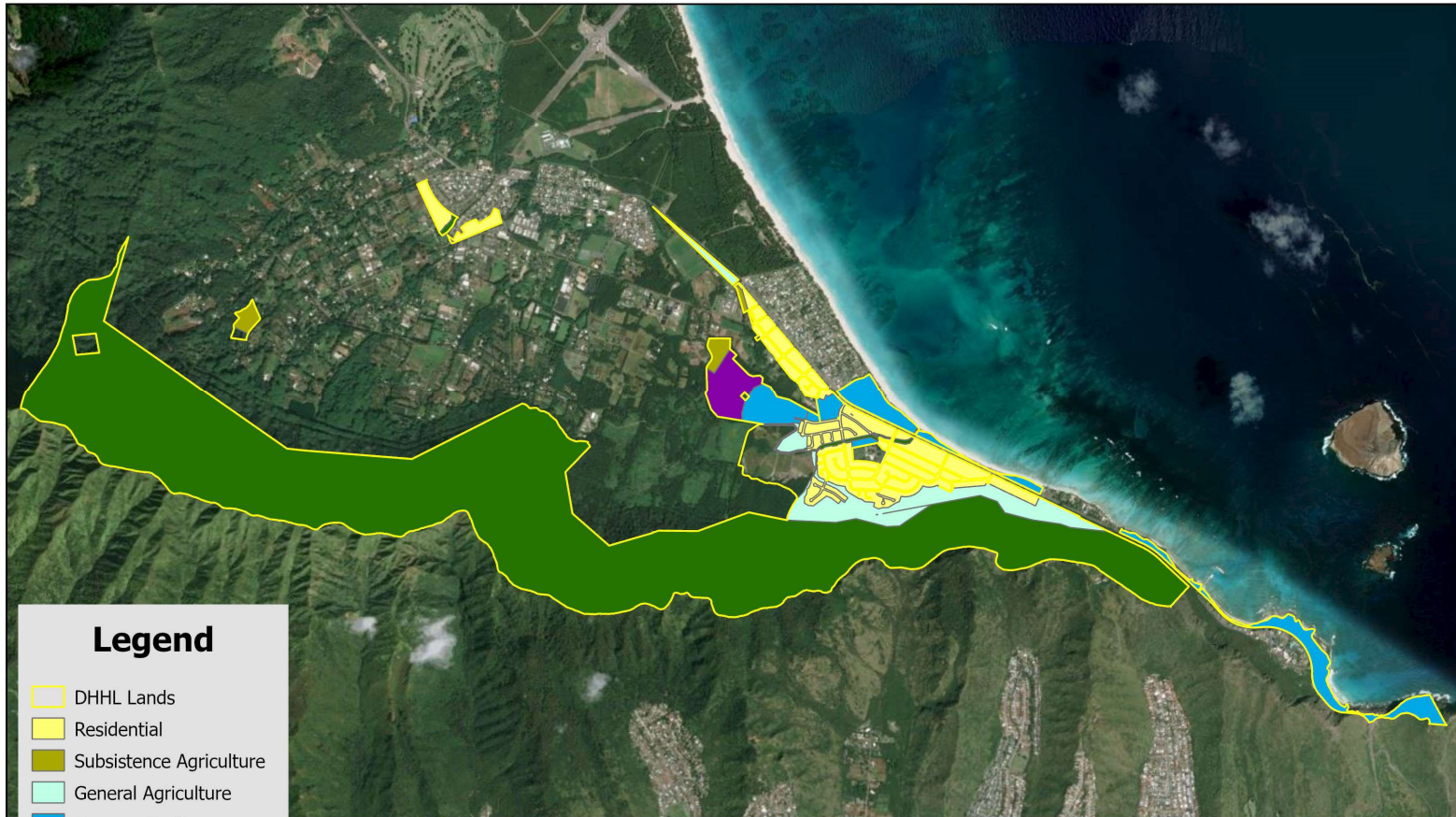


Beneficiary Mtgs 1-3:

Meeting #1: March 11, 2024

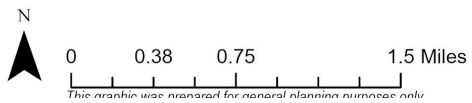
Meeting #2: April 1, 2024 (TODAY)

Meeting #3: April 15, 2024



Legend

- DHHL Lands
- Residential
- Subsistence Agriculture
- General Agriculture
- Community Use
- Industrial
- Conservation



**Waimānalo Regional Plan Update
Planning Area**
Department of Hawaiian Home Lands



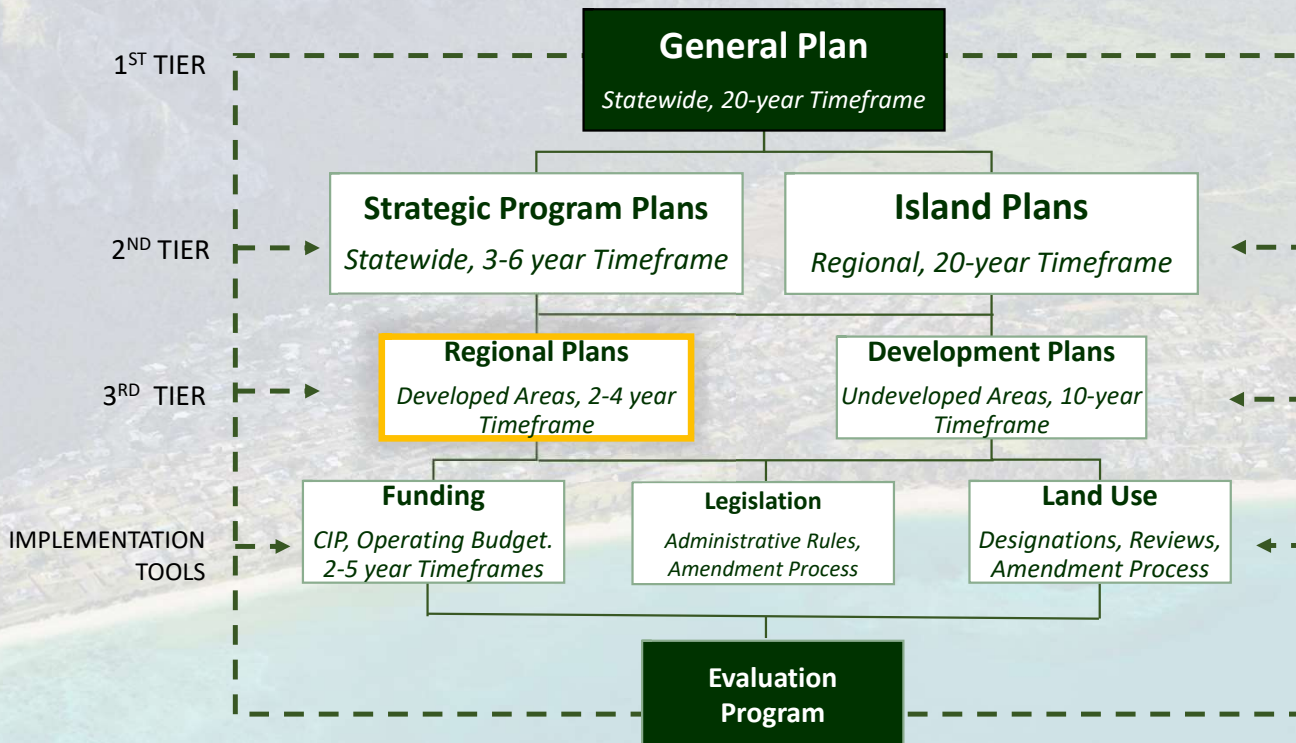
An aerial photograph of a coastal town and mountains. The foreground shows a sandy beach and turquoise water. The middle ground features a town with buildings and green fields. The background is dominated by large, green, mountainous terrain with deep valleys.

Beneficiary Consultation #1

REVIEW & RE-CAP

What is a Regional Plan?

DHHL PLANNING SYSTEM



Purpose of the regional plans :

- To enable the community to be involved in planning for their region.
- To assist the community with identifying and prioritizing projects within the region.
- To identify detailed action steps needed to implement the priority projects.

What Will the Update Include?

WAIMĀNALO



REGIONAL PLAN

November 2011

DEPARTMENT OF HAWAIIAN HOME LANDS



- Homestead Regional Profile
- Regional Lands & Development
- Infrastructure
- Homestead Concerns & Priorities
- **Vision Statement & Community Values for Region**
- **Implementation Action Steps for each Priority Project**

QUESTIONS & CONCERNS

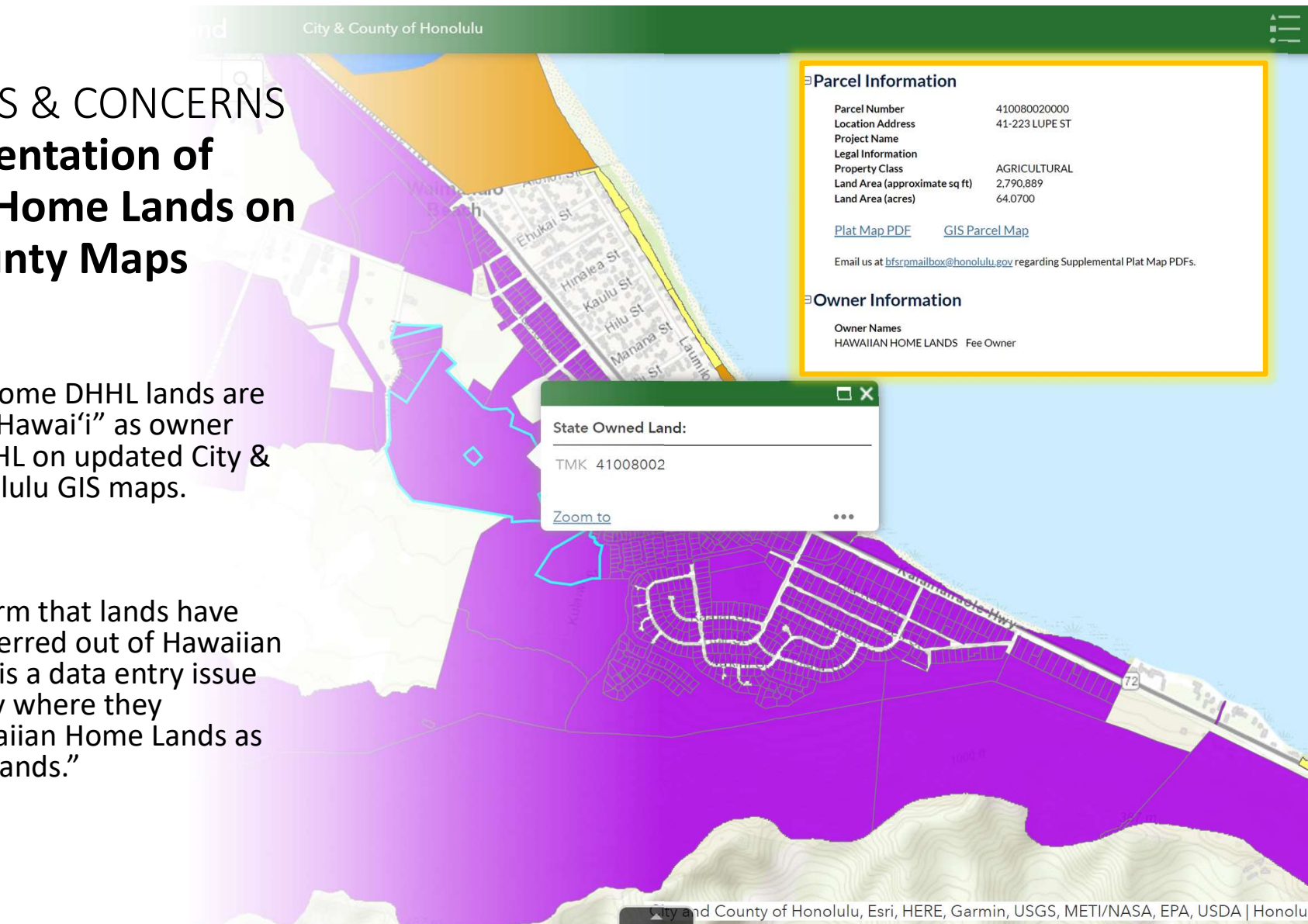
Misrepresentation of Hawaiian Home Lands on City & County Maps

Questions:

Concerns that some DHHL lands are listed “State of Hawai‘i” as owner rather than DHHL on updated City & County of Honolulu GIS maps.

Response:

DHHL can confirm that lands have not been transferred out of Hawaiian Home Lands. It is a data entry issue with the County where they generalize Hawaiian Home Lands as “State Owned Lands.”



PLEASE SEE HANDOUT



QUESTIONS & CONCERNS

Disposition of Lands for Non-homestead Use

Request:

- Provide information on the disposition of land for non-homestead/revenue generation.

Response:

- Total of 36 land use dispositions in Waimānalo, which include:
 - 4 are general leases
 - 22 licenses
 - 9 right of entries
 - 1 revocable permit
 - Total annual lease rent collected by DHHL Land Management Division = \$104,470.88

OTHER PROJECTS & UPDATES Wong Farms

Update:

- 104.547 acres conveyed by DLNR to DHHL in 2018
- Transferred DLNR GL expires November 30, 2029
- Draft Environmental Assessment: End of 2023
- Final Environmental Assessment: 2024
- Designs and Engineering: 2024 – 2025
- Construction: 2025 – 2026



OTHER PROJECTS & UPDATES

Flood Control Channel Improvements

Update:

- On-going maintenance of concrete lined channel (approximately 2,000 linear feet)
- Runs from Kamauna Place down to Kalaniana'ole Highway
- Improvements include:
 - Spall work
 - Crack Repair
 - Fence Repair
 - Tree Removal
 - Lining
- Cost Est. \$ 4.5 Million (Leg CIP Purpose 4)

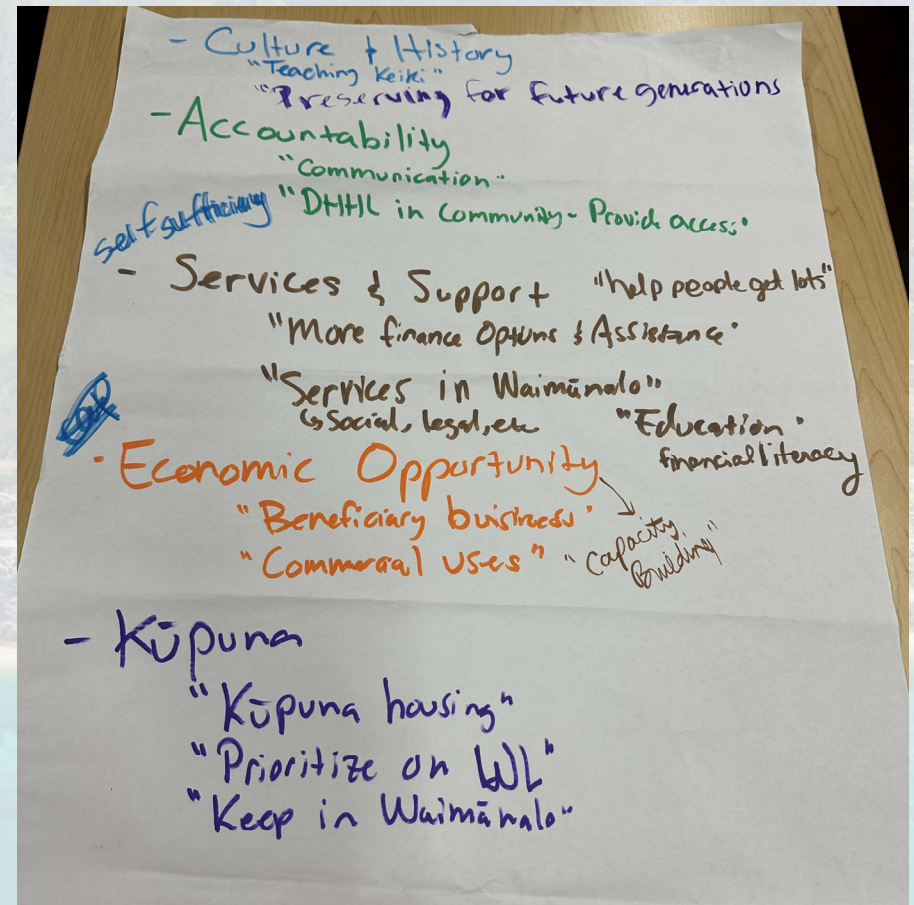
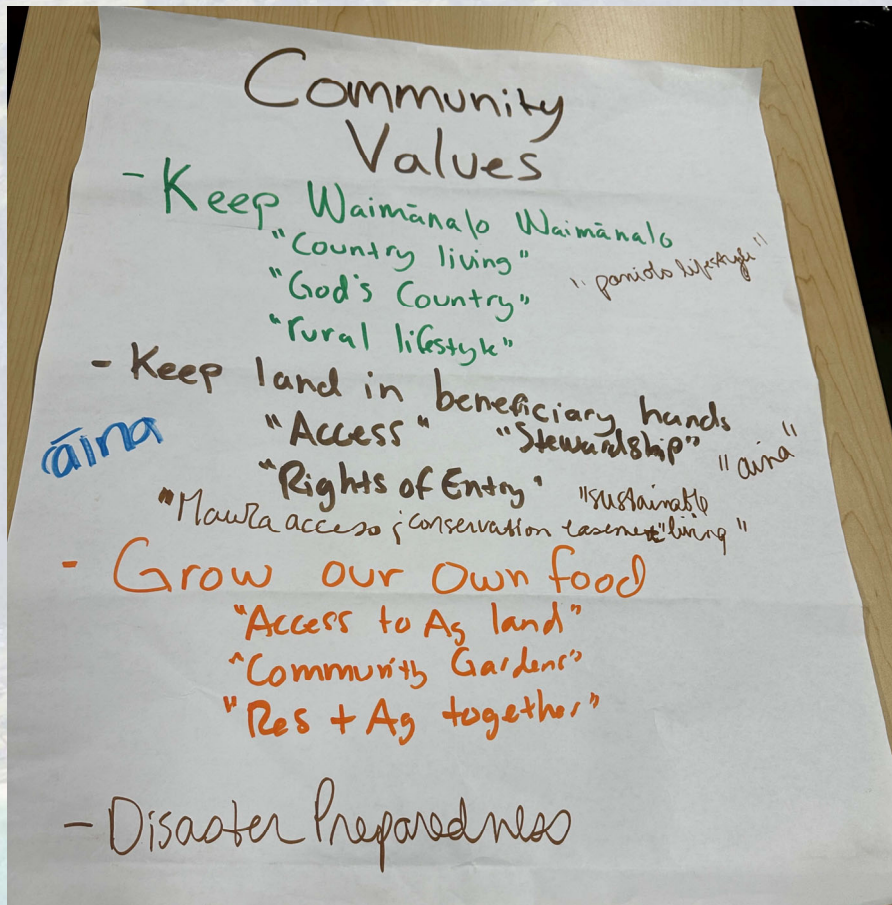
Before



After



Community Values Re-cap



An aerial photograph of a coastal town and a large mountain range. The town is situated along a sandy beach with turquoise water. The mountains are green and rugged, with a prominent ridge line. The sky is clear and blue.

FINISH

Community Values & Visioning Activity

Breakout Groups

Draft Community Values

Keep Waimānalo
Waimānalo

Keep Land in
Beneficiary Hands

Culture and
History

‘Auamo Kuleana

Sust‘Āinability

Resiliency

Grow Community
Assets

Mālama Kūpuna

Draft Vision Statements

“Na Waimānalo, no Waimānalo”

“By Waimānalo, for Waimānalo”

-

“E Ho‘omau i ka Pono”

“Persevere in Righteousness”

-

“Mai uka a i kai, Waimānalo cherishes the culture, history and connection to ‘āina that inspires us to protect, steward, and access our places for the generations to come. Waimānalo embraces its rural character and paniolo lifestyle that has been passed from generation to generation. We strive to ‘auamo our kuleana to our kūpuna as we navigate sustainable pathways forward and work to always keep Waimānalo, Waimānalo.”

An aerial photograph of a coastal town and a large mountain range. The town is situated on a flat plain, surrounded by green fields and some buildings. The ocean is visible in the foreground, with a sandy beach. The mountains in the background are rugged and covered in green vegetation. The sky is clear and blue.

Report Back

Community Values & Vision Statement

Issues, Opportunities, & Resources

- What issues are there in the community?
- Are there opportunities/ideas to address these issues?
- Are there resources, skills, or other assets in this group or in the community that can help address these issues?

GOAL: Identify the areas/needs that we can all agree projects should address

An aerial photograph of a coastal town and mountains. The foreground shows a sandy beach and turquoise water. The middle ground features a town with buildings and green fields. The background is dominated by large, green, mountainous terrain with deep valleys.

Report Back

Issues, Opportunities, & Resources

An aerial photograph of a coastal town and a large mountain range. The town is situated along a sandy beach with turquoise water. The mountains are green and rugged, with a prominent ridge line. The text "Closing & Next Steps" is overlaid in the center-left of the image.

Closing & Next Steps

Next Steps

- Presentation and discussion recap will be posted on the DHHL website
- Next meeting we will create a list of potential projects and select the top five priority projects
- **Next meeting date: Monday, April 15, 2024 from 6:00 to 8:00 pm at the WHHA Hālau**

Project Schedule



Beneficiary Mtgs 1-3:

Meeting #1: March 11, 2024

Meeting #2: April 1, 2024 (TODAY)

Meeting #3: April 15, 2024

Mahalo!

For more information contact:



Lillie Makaila, Planner

Lilliane.k.makaila@hawaii.gov

(808) 620-9279



Malachi Krishok, Planner

mkrishok@ssfm.com

(808) 356-1272

Visit the project website



Scan QR code or
visit the URL below:

<https://dhhl.hawaii.gov/po/waimanalo-regional-plan-update-2024/>