



DEPARTMENT OF HAWAIIAN HOME LANDS

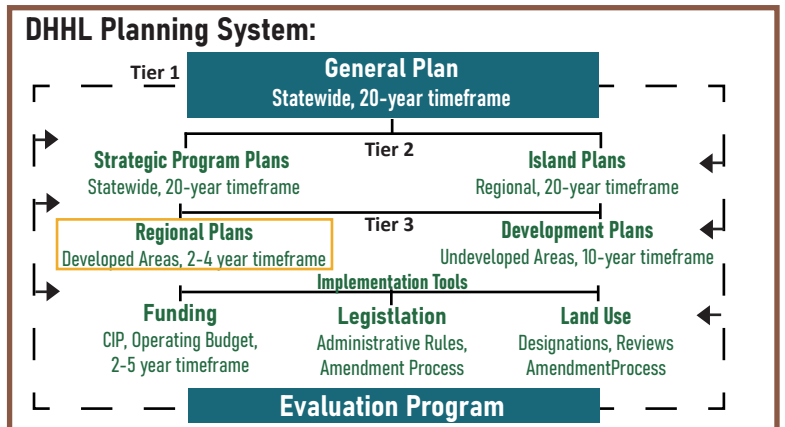
# WAIMĀNALO Regional Plan Update FACT SHEET

The Waimānalo Regional Plan is one of twenty-two regional plans the Department of Hawaiian Home Lands (DHHL) has developed statewide. DHHL Regional Plans allow homestead lessees to set a vision and identify priority projects to address issues and needs in their community. With support from DHHL and other partners, the planning process and resulting updated Regional Plan are intended to stimulate capacity-building, and to support beneficiaries to champion the projects that will help to better their community.

The existing Waimānalo Regional plan was completed in 2011 and is being updated to reflect the needs, vision and values important to the Waimānalo homestead community.

## Purpose of the Regional Plan:

- To directly involve the homestead community in planning for their region.
- To identify the projects and priorities that are important to the homestead community.
- To Identify potential resources (such as partners and funding sources) for implementing priority projects.



## Project Schedule

SUBJECT TO CHANGE



## For more information, please contact:



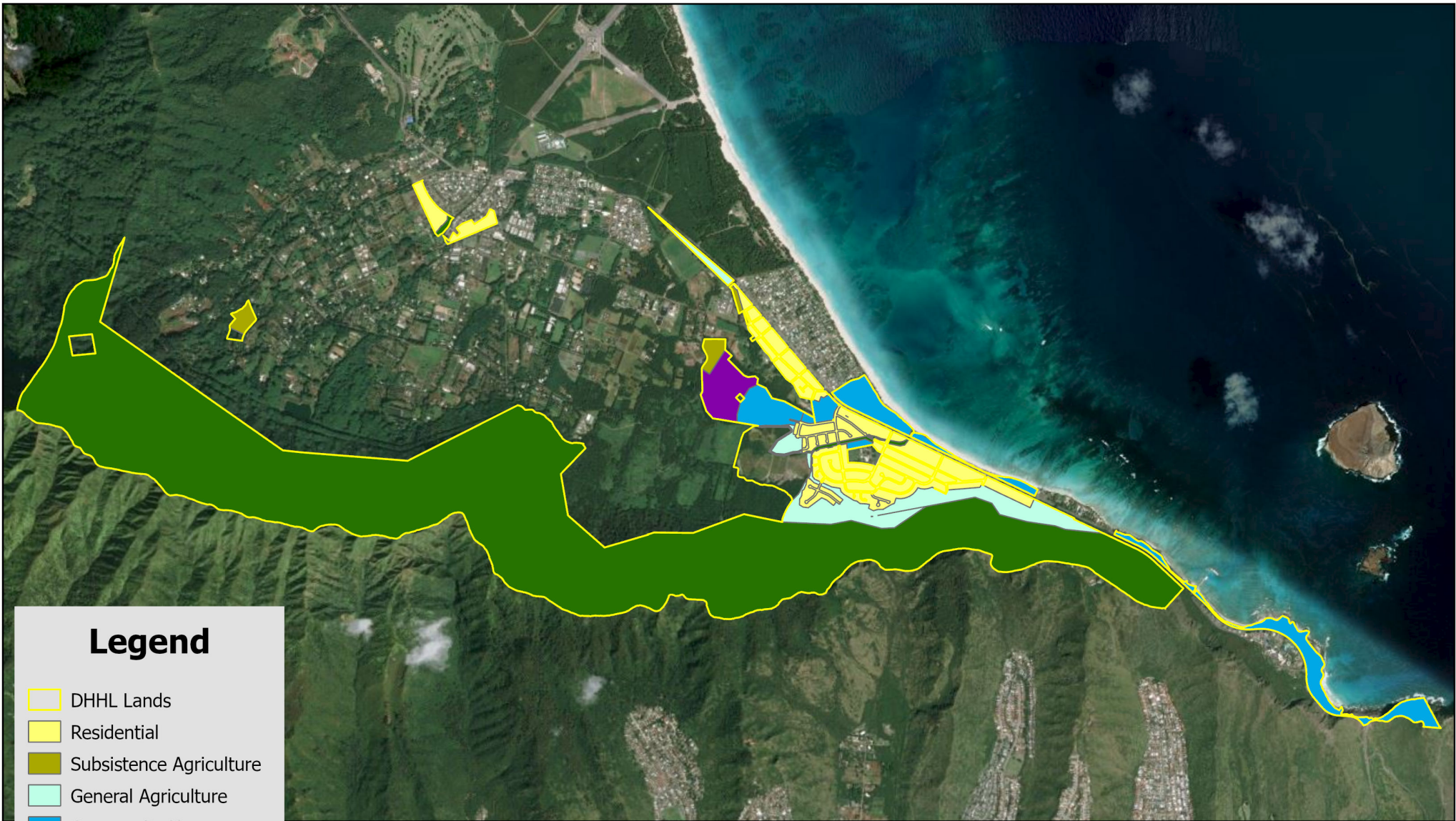
**Lillie Makaila, Project Manager**

DHHL Planning Office  
Phone: (808) 620-9484  
Email: lilliane.k.makaila@hawaii.gov



**Malachi Krishok, Planner**

SSFM International, Inc.  
Phone: (808) 356-1272  
Email: mkrishok@ssfm.com

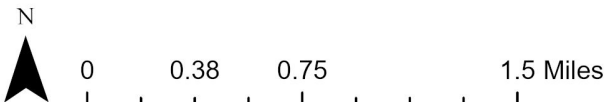


**Legend**

- DHHL Lands
- Residential
- Subsistence Agriculture
- General Agriculture
- Community Use
- Industrial
- Conservation

**Waimānalo Regional Plan Update  
Planning Area**

Department of Hawaiian Home Lands



*This graphic was prepared for general planning purposes only*

