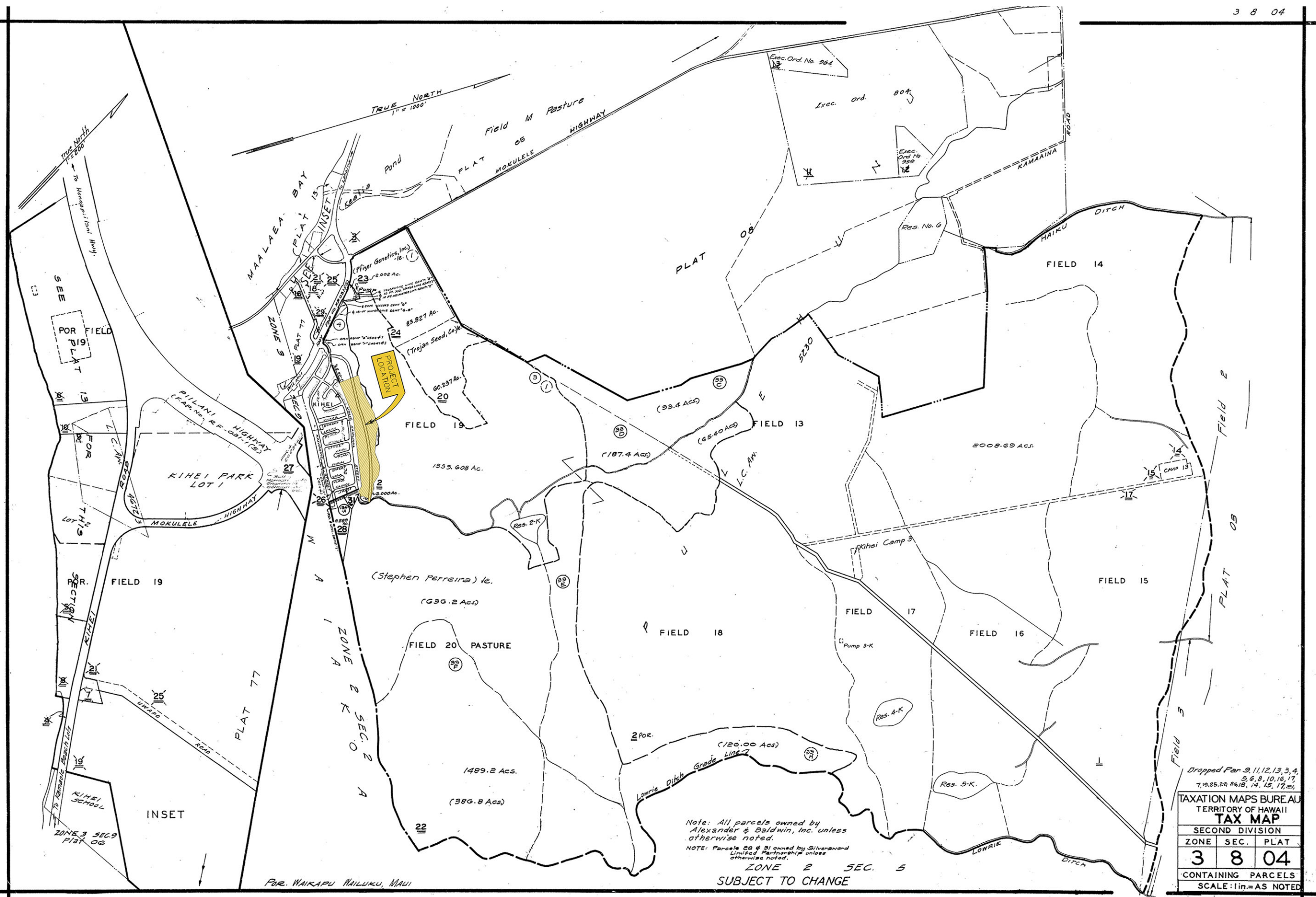


DEC 1 1943  
 FEB 1 1945  
 JUN 1 1946  
 FEB 3 1950  
 FEB 15 1950  
 APR 25 1951  
 JUN 1 1958  
 DEC 1 1959  
 DEC 2 1962  
 JAN 25 1981  
 OCT 3 1983  
 JAN 29 1985  
 APR 4 1986

Dwg. No. 8429  
 Source: H.C.S. Co. (Sug. Plant. Map)  
 By: D.S.C. & H.N. Date: 1939



Note: All parcels owned by Alexander & Baldwin, Inc. unless otherwise noted.  
 NOTE: Parcels 28 & 31 owned by Silverward Limited Partnership unless otherwise noted.

ZONE 2 SEC. 5  
 SUBJECT TO CHANGE

Dropped Parcels 9, 11, 12, 13, 3, 4, 5, 6, 8, 10, 16, 17, 7, 18, 25, 29, 24, 18, 14, 15, 17, 24

TAXATION MAPS BUREAU  
 TERRITORY OF HAWAII  
**TAX MAP**  
 SECOND DIVISION

ZONE	SEC.	PLAT
3	8	04

CONTAINING PARCELS  
 SCALE: 1 in. = AS NOTED

**EXHIBIT F**

# KAMALANI INCREMENT 2 & 3

## KIHEI, MAUI

~400 SINGLE-FAMILY HOMES

Site Parcel/TMK Map: #38004035, #38004036, #38004037

