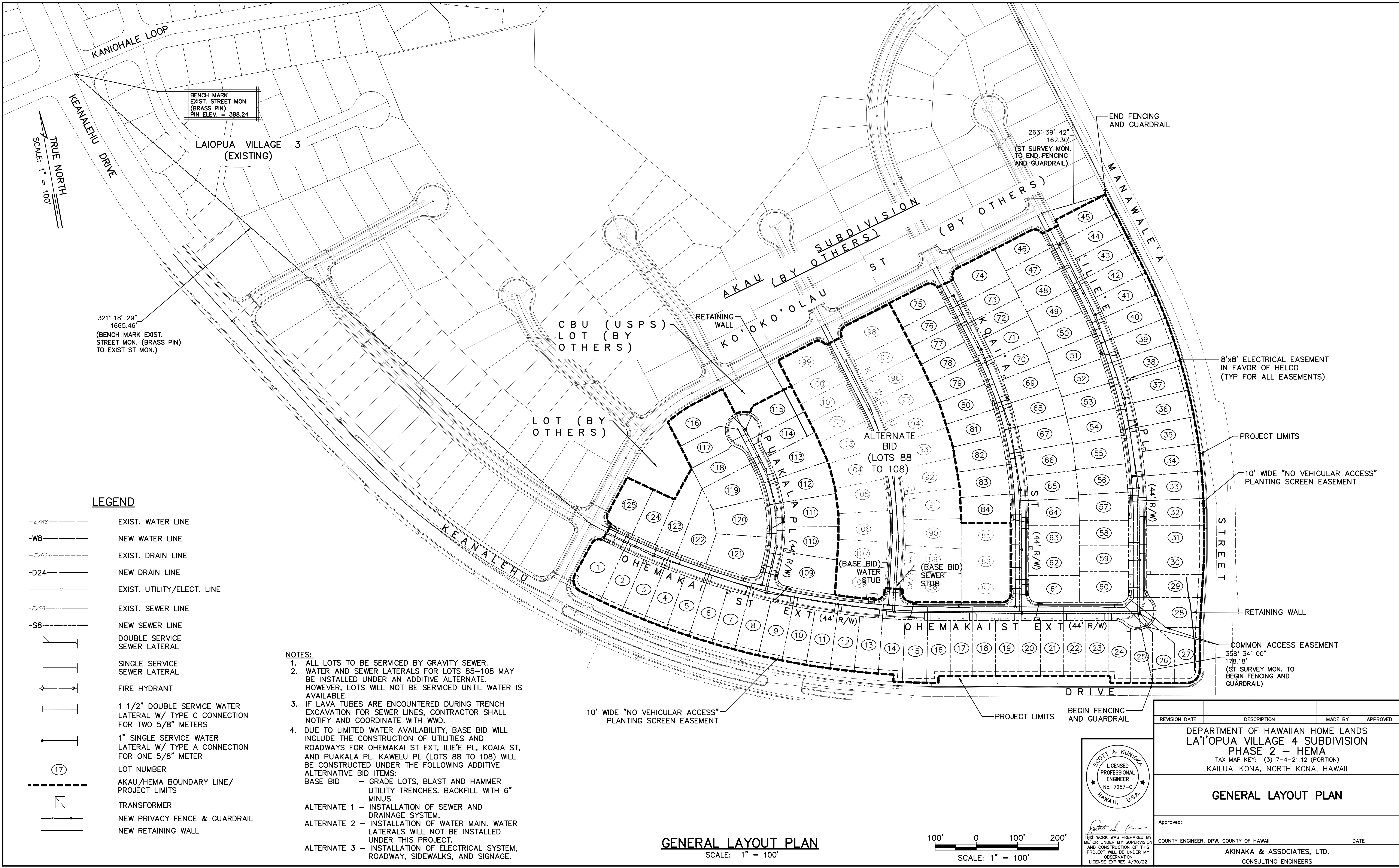


G:\DHHL1-02 Laiohua Village
 4\ACAD\DHHL1102-General Layout Plan.DWG
 Last Save by: MLUM
 Last Saved: 9/6/2019
 Plotted on: 3/9/2020



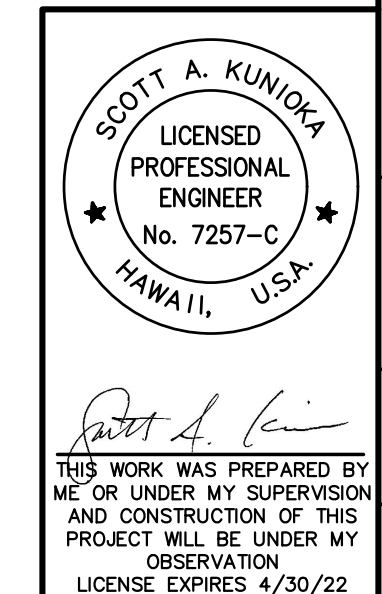
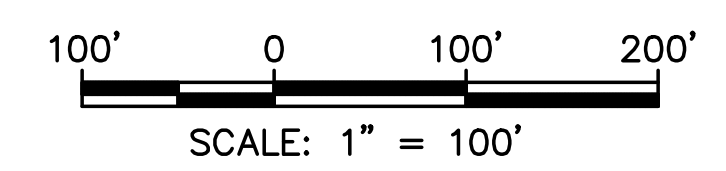
LEGEND

- E/W8 EXIST. WATER LINE
- W8 NEW WATER LINE
- E/D24 EXIST. DRAIN LINE
- D24 NEW DRAIN LINE
- e EXIST. UTILITY/ELECT. LINE
- E/S8 EXIST. SEWER LINE
- S8 NEW SEWER LINE
- DOUBLE SERVICE SEWER LATERAL
- SINGLE SERVICE SEWER LATERAL
- FIRE HYDRANT
- 1 1/2" DOUBLE SERVICE WATER LATERAL W/ TYPE C CONNECTION FOR TWO 5/8" METERS
- 1" SINGLE SERVICE WATER LATERAL W/ TYPE A CONNECTION FOR ONE 5/8" METER
- LOT NUMBER
- AKAU/HEMA BOUNDARY LINE/PROJECT LIMITS
- TRANSFORMER
- NEW PRIVACY FENCE & GUARDRAIL
- NEW RETAINING WALL

NOTES:

1. ALL LOTS TO BE SERVICED BY GRAVITY SEWER.
2. WATER AND SEWER LATERALS FOR LOTS 85-108 MAY BE INSTALLED UNDER AN ADDITIVE ALTERNATE. HOWEVER, LOTS WILL NOT BE SERVICED UNTIL WATER IS AVAILABLE.
3. IF LAVA TUBES ARE ENCOUNTERED DURING TRENCH EXCAVATION FOR SEWER LINES, CONTRACTOR SHALL NOTIFY AND COORDINATE WITH WWD.
4. DUE TO LIMITED WATER AVAILABILITY, BASE BID WILL INCLUDE THE CONSTRUCTION OF UTILITIES AND ROADWAYS FOR OHEMAKAI ST EXT, ILIE'E PL, KOAIA ST, AND PUAKALA PL. KAWELU PL (LOTS 88 TO 108) WILL BE CONSTRUCTED UNDER THE FOLLOWING ADDITIVE ALTERNATIVE BID ITEMS:
 BASE BID - GRADE LOTS, BLAST AND HAMMER UTILITY TRENCHES. BACKFILL WITH 6" MINUS.
 ALTERNATE 1 - INSTALLATION OF SEWER AND DRAINAGE SYSTEM.
 ALTERNATE 2 - INSTALLATION OF WATER MAIN. WATER LATERALS WILL NOT BE INSTALLED UNDER THIS PROJECT.
 ALTERNATE 3 - INSTALLATION OF ELECTRICAL SYSTEM, ROADWAY, SIDEWALKS, AND SIGNAGE.

GENERAL LAYOUT PLAN
 SCALE: 1" = 100'



REVISION DATE	DESCRIPTION	MADE BY	APPROVED
DEPARTMENT OF HAWAIIAN HOME LANDS LA'IOPIUA VILLAGE 4 SUBDIVISION PHASE 2 - HEMA TAX MAP KEY: (3) 7-4-21:12 (PORTION) KAILUA-KONA, NORTH KONA, HAWAII			
GENERAL LAYOUT PLAN			
Approved: _____			
COUNTY ENGINEER, DPW, COUNTY OF HAWAII		DATE	
AKINAKA & ASSOCIATES, LTD. CONSULTING ENGINEERS			
FILE	POCKET	FOLDER	NO.