



# 'Ewa Beach Homestead Project

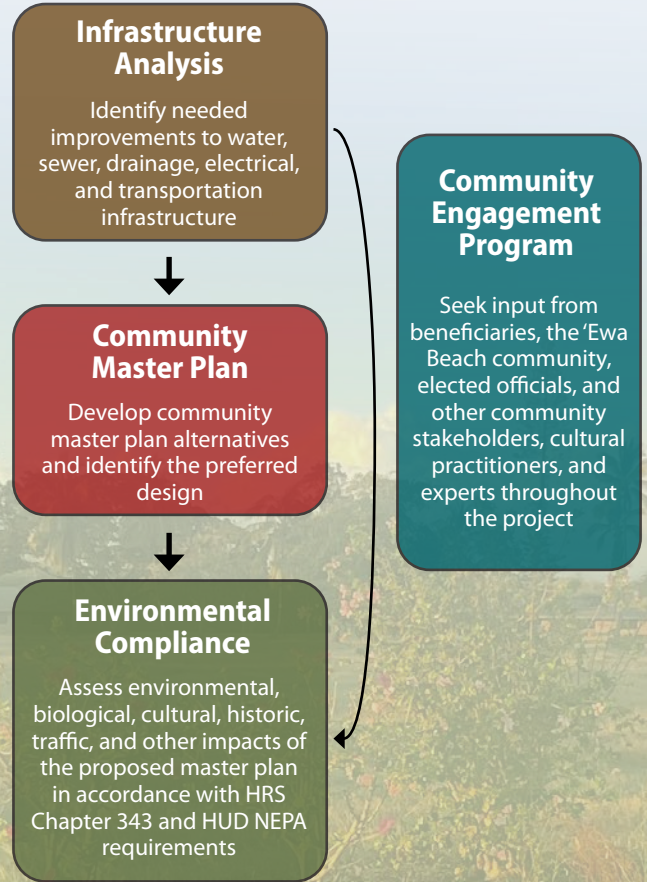
## Project Overview

The State Department of Hawaiian Home Lands (DHHL) is developing a master plan and preparing an environmental assessment for approximately 80 acres of recently acquired land in 'Ewa Beach, O'ahu.

Homestead development is the highest priority in DHHL's O'ahu Island Plan. The 'Ewa Beach homestead community is primarily intended to provide residential homesteading opportunities to native Hawaiian beneficiaries on the O'ahu Residential Waitlist, which currently has the most beneficiaries waiting for homesteads. The parcel is located adjacent to an existing residential neighborhood, with access to employment centers, public transit, community services, and recreational facilities.

The master planning and environmental compliance is expected to be funded by the Native American Housing Assistance and Self-Determination Act. It is expected that the construction will be funded with a portion of the \$600 million appropriation provided by the 2022 Hawai'i State Legislature to implement Act 279, the "Waitlist Reduction Act."

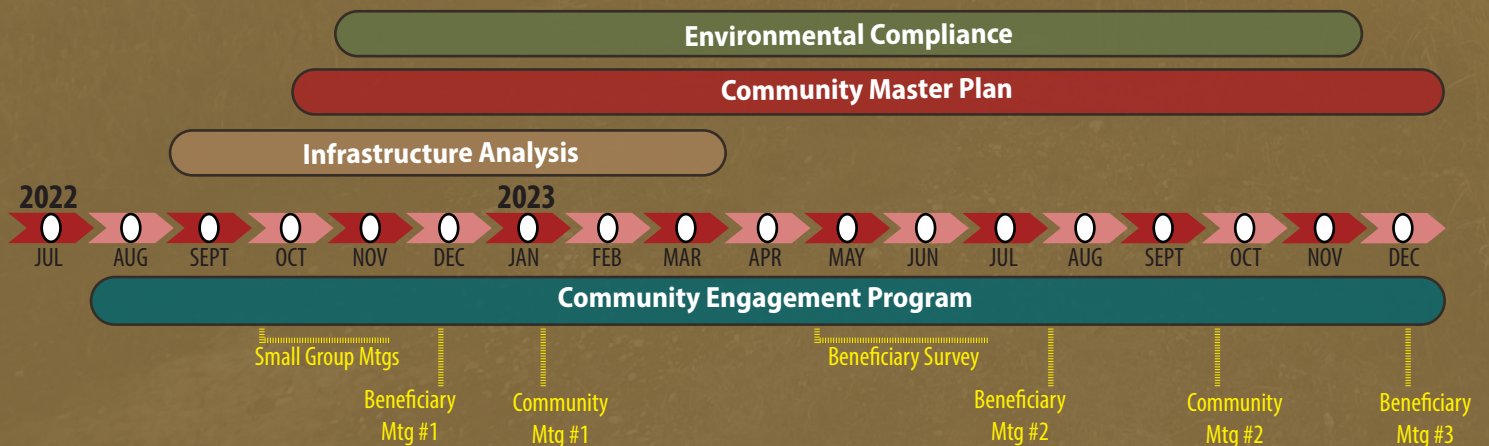
## Master Plan and Environmental Assessment Phase



## Project Objectives

1. Provide residential homesteads to DHHL beneficiaries on the O'ahu waiting list.
2. Create a thriving homestead community in 'Ewa Beach that honors culture, environment and sense of place.
3. Involve beneficiary lessees, waiting list applicants, and the surrounding community in envisioning and shaping the homestead community.

## Anticipated Project Schedule



## Project Area Map



## How to get involved

### Beneficiaries

- Attend Beneficiary Consultation Meetings
- Complete the Beneficiary Survey (mail or online)
- Testify at Hawaiian Homes Commission

### Public

- Attend and provide comments at Neighborhood Board meetings
- Attend Community Meetings

For more information and to sign up for the project mailing list,  
please visit the project website:

[dhl.hawaii.gov/po/oahu/ewa-beach-homestead-project/](https://dhl.hawaii.gov/po/oahu/ewa-beach-homestead-project/)



SCAN ME!



**Pearlyn Fukuba, Project Manager**

DHHL Planning Office  
Phone: (808) 620-9279  
Email: [pearlyn.l.fukuba@hawaii.gov](mailto:pearlyn.l.fukuba@hawaii.gov)



**Melissa May, Project Manager**

SSFM International, Inc.  
Phone: (808) 628-5861  
Email: [mmay@ssfm.com](mailto:mmay@ssfm.com)