



HAWAIIAN HOME LANDS

HAWAIIAN HOMES COMMISSION · DEPARTMENT OF HAWAIIAN HOME LANDS

## **Item G-6**

# **Accept the Beneficiary Consultation Report for the South Kohala Coastal Partnership Proposed Firebreak Project in the Kailapa Homestead Community**

Kawaihae, Hawai'i Island

December 19 – 20, 2022



# Background

## Kailapa Fuelbreak Project

### Project purpose:

- to create a fuelbreak to assist in the resiliency of the Kailapa Community and ahupua'a





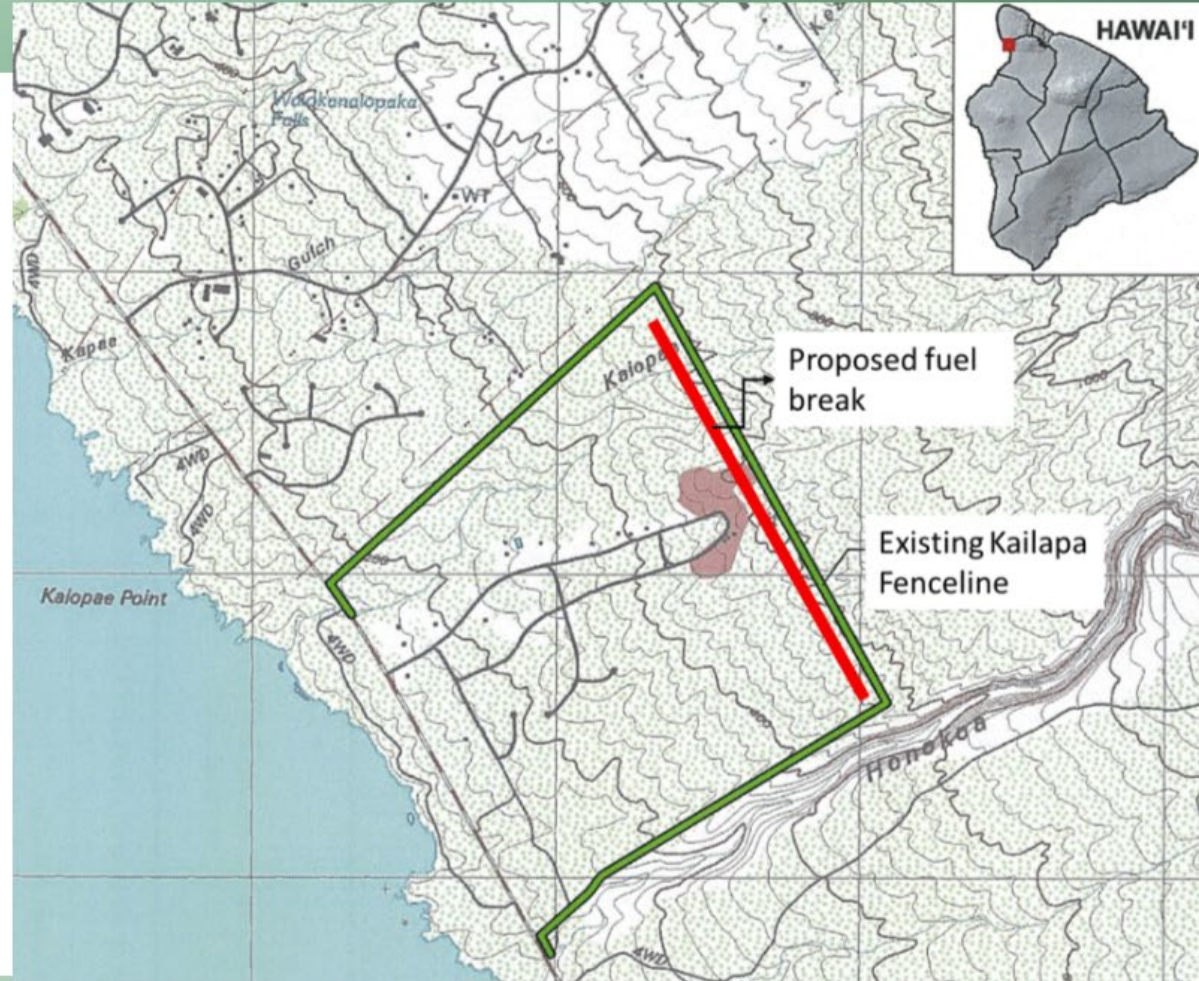


# Background

## Kailapa Fuelbreak Project

### Project Area:

- Makai of the mauka fence line
- Will not include the side fence lines to avoid archaeological sites



Source: Wildey et al. 2018



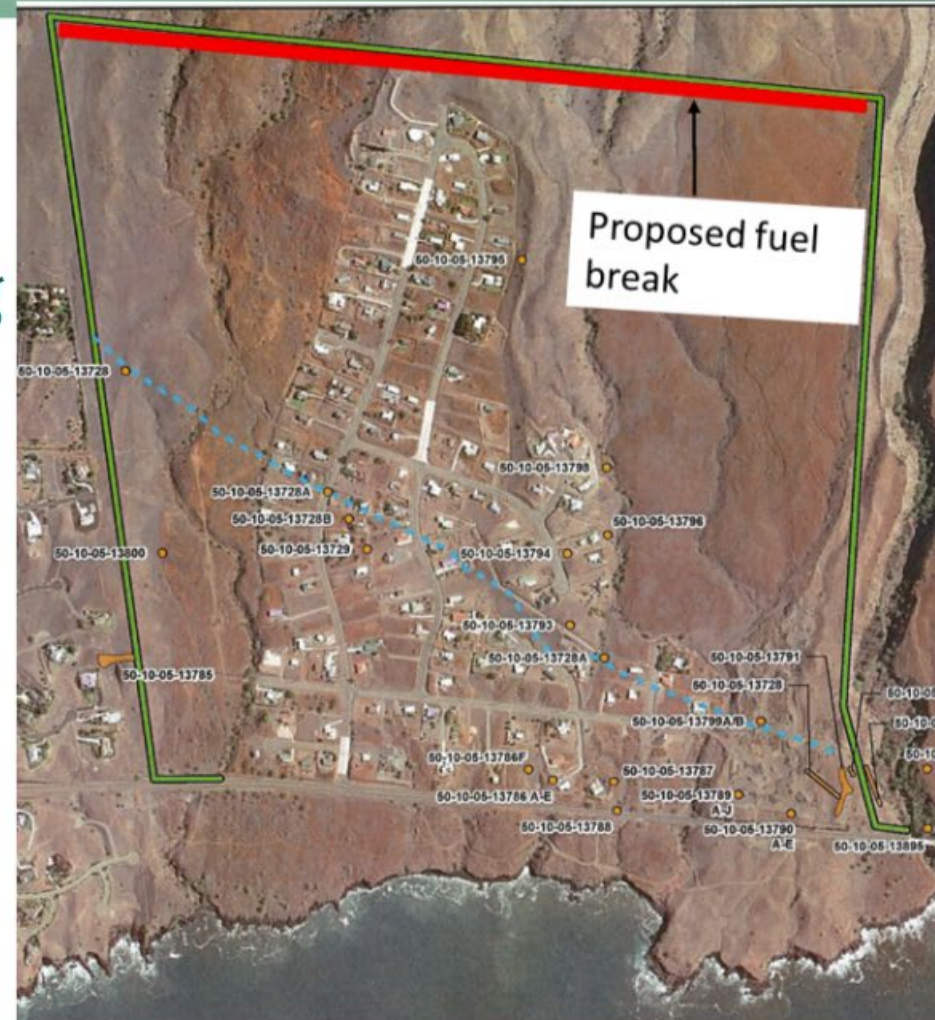


# Background

## Kailapa Fuelbreak Project

### Project Scope of Work:

- clearing vegetation to form an approximate a 30-ft wide, 0.8 mile long corridor to act as a fuel break
- using hand-held portable equipment
  - NO digging into or disturbing the soil itself to remove roots
  - NO use of heavy machinery
  - NO use of chemical herbicides.



Source: Cultural Survey Hawai'i, Inc.; Wildey et al. 2018



## Proposed Project Timeline:

- Today until December 14- submit comments to DHHL
- DHHL will give a letter of support to SKCP & NOAA that will be submitted to Hawai'i State Historic Preservation Division (SHPD)
- SHPD submit approval of project to NOAA and Hawai'i State Division of Aquatic Resources (DAR)
- DAR will create a request for bids
- DAR will select a bid and contractor
- The contractor will work SKCP to gain access from DHHL and to inform DHHL and the community of the project workdays
- Projected completion of the fuel break is by July 2023



# Beneficiary Consultation Meeting Nov. 15

- Approximately 15 people attended, 7 self-identified as beneficiaries.
- One written comment was submitted during the 30-day comment period (Nov. 15 to Dec. 15)
- Beneficiaries that attended the meeting supported the project
- Suggestions and concerns expressed
  - Provide ample notification to residents prior to the start of work -- two weeks would be good -- more than two weeks and people might forget and less than two weeks is not enough time.
  - Hope that there will be enough community volunteers to participate in workdays related to the project
  - Long-term maintenance of the firebreak



# Beneficiary Consultation Meeting Nov. 15

- Other issues raised during the consultation meeting
  - Soil erosion into near shore waters
  - Need for an alternate emergency access road
  - Kailapa residents need an alternative source of water that is more affordable than water from Kohala Ranch



# Mahalo



DEPARTMENT OF HAWAIIAN HOME LANDS

[www.dhhl.hawaii.gov](http://www.dhhl.hawaii.gov)