



HAWAIIAN HOME LANDS

HAWAIIAN HOMES COMMISSION · DEPARTMENT OF HAWAIIAN HOME LANDS

## **Item G-4**

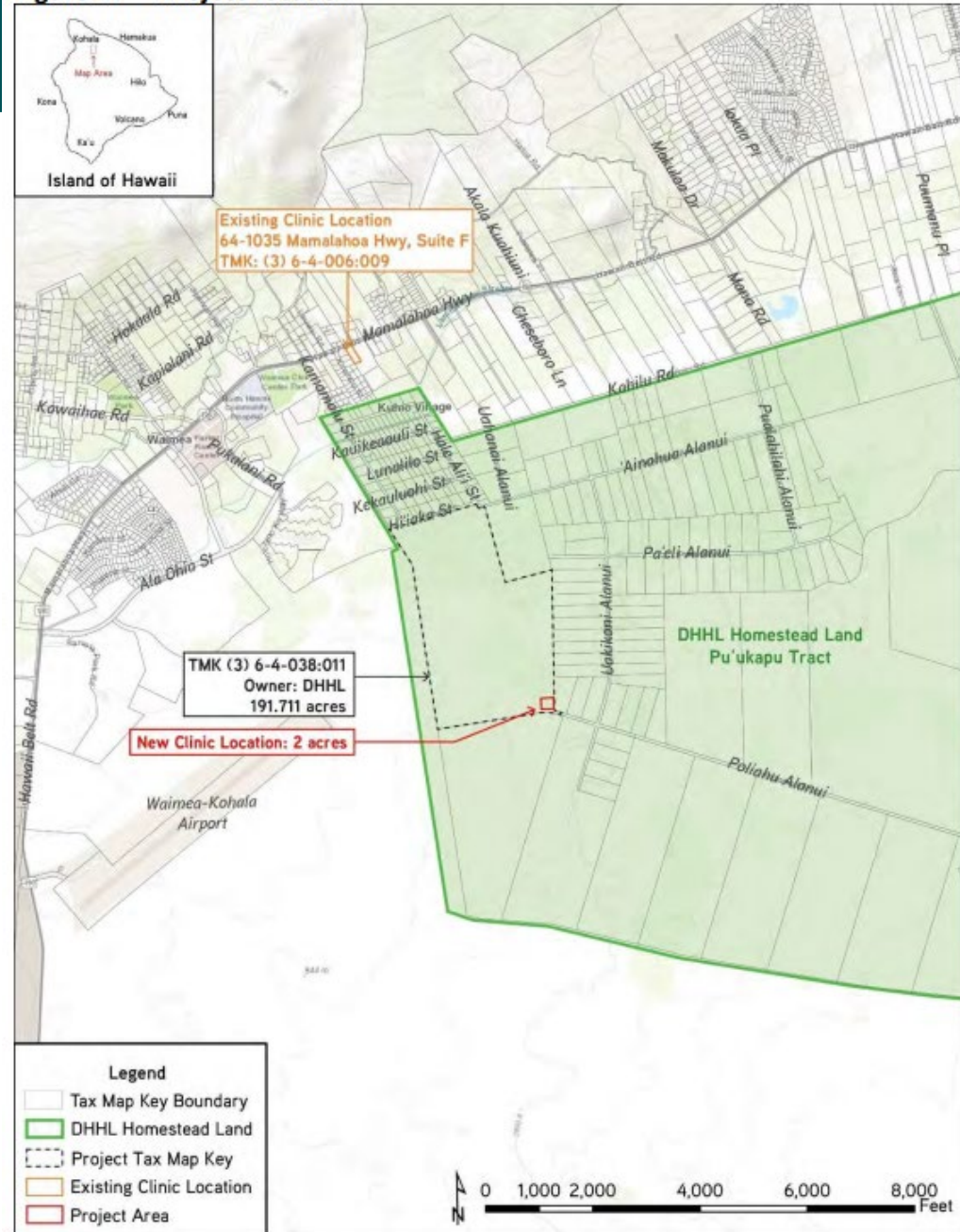
# **Draft Environmental Assessment Waimea Nui Regional Community Development Initiative Kipuka o ke Ola Clinic Relocation**

Pu'ukapu, Waimea, Hawai'i Island

December 19– 20, 2022

# Project Location

Figure 1: Project Location





# Project Background

- Project Partners
  - Waimea Hawaiian Homesteaders Association Inc.
  - Kīpuka o ke Ola (Medical Division of Waimea Hawaiian Homestead Association)





# Project Background

- Purpose and need





# Project Background

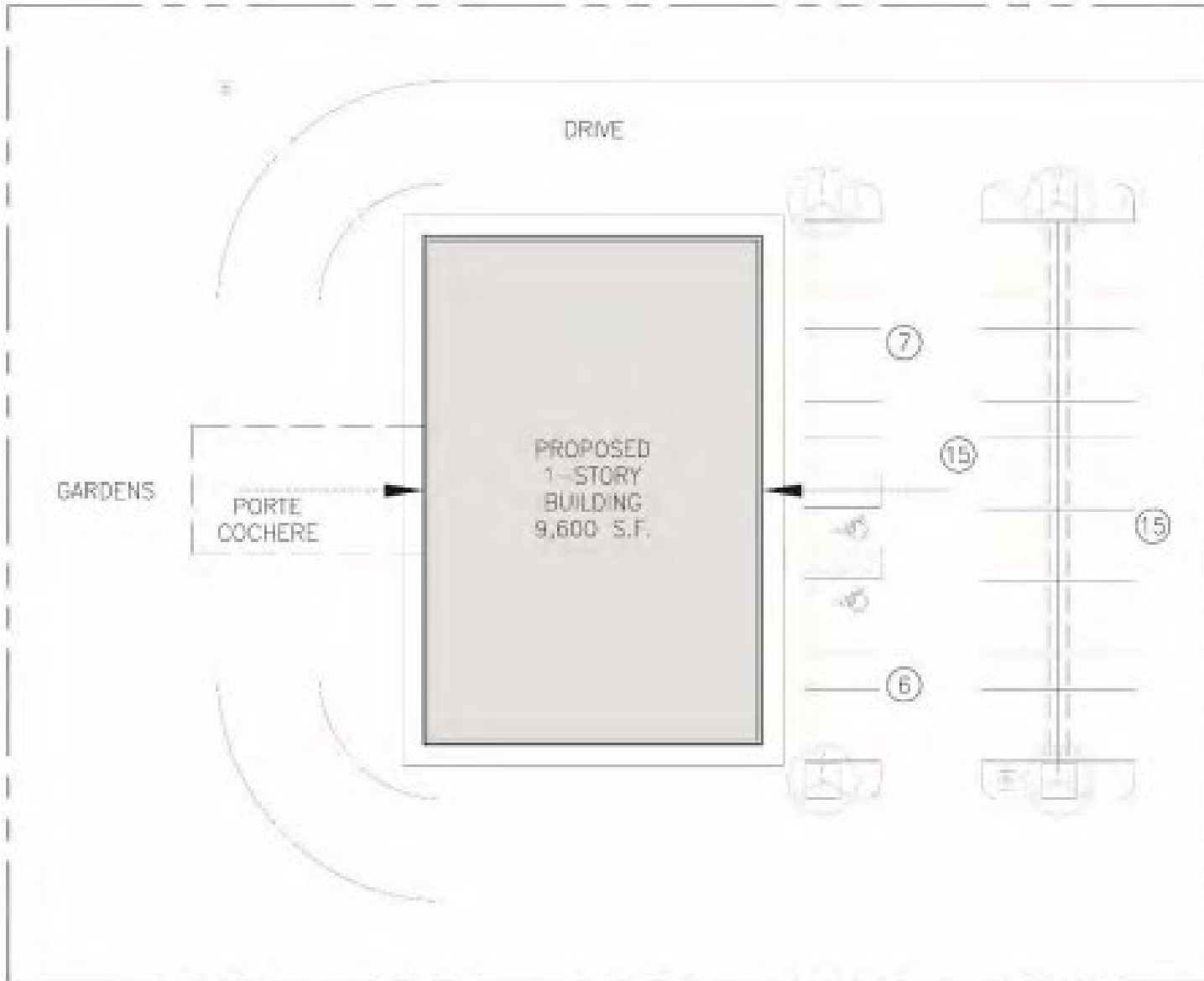
- Project history
  - May 2015 HHC approved Final EA for Waimea Nui Initiative
  - Nov. 2015 HHC approved General Lease to Waimea Nui for 161-acre parcel
  - 2021 WHHAI initiated EA for KOKO clinic relocation in portion of the planned equestrian center location



Source: Group 70 International



# Project Scope and Details





# Environmental Assessment Findings

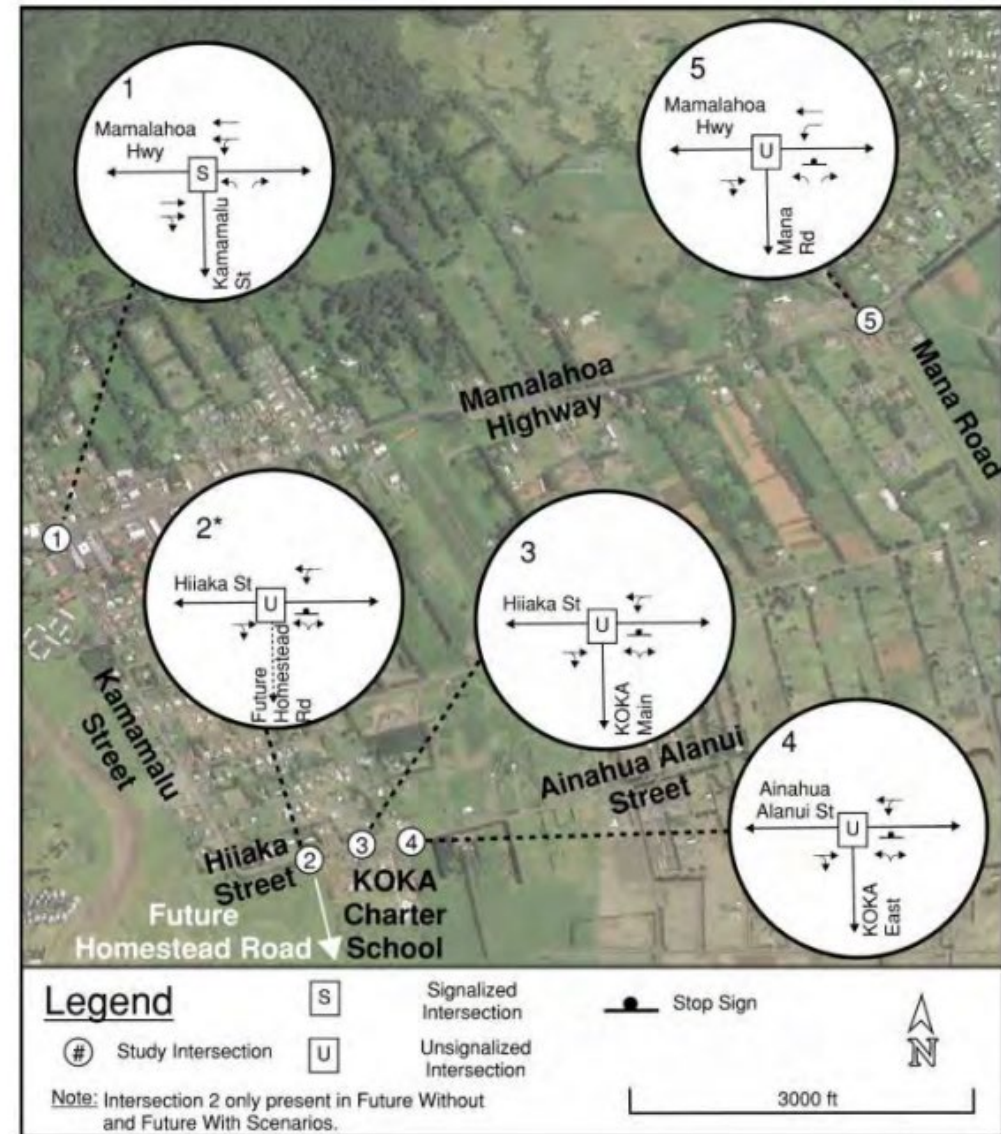
- Existing site conditions did not dramatically change since the 2015 Final EA. Previous studies from the 2015 Final EA were still valid:
  - Botanical survey
  - Avian and mammalian survey
  - Archaeological inventory survey
- Water availability
  - County DWS confirmed 10,000 gallons per day available on its system for Clinic
- Wastewater
  - On-site individual wastewater system will be utilized



# Environmental Assessment Findings

- An update to the 2015 traffic impact analysis report was conducted as part of this DEA process
- The KOKO Clinic is anticipated to generate 30 to 37 trips in the AM and PM peak hours, respectively.
- The low number of trips are not expected to have a significant impact on the surrounding road network
- Intersection along Mamalahoa Hwy and Mana Road should be studied in the future with HDOT to assess need for traffic signal

Figure 12: Existing Study Intersections and Lane Configurations







# 30-Day Comment Period Nov. 8 to Dec. 8

- Four comments received from State agencies (Dept. of Health, Dept. of Accounting and General Services, Dept. of Land and Natural Resources)
- One comment received from Federal agencies (U.S. Fish and Wildlife Service)
- One comment received from County agencies (Fire Department)
- One late comment received from State Dept. of Transportation



# FONSI is based on 13-Criteria of Significance

Per HAR 11-200-12 a Proposed Action does not:

- (1) Involve an irrevocable commitment to loss or destruction of any natural or cultural resource;**
- (2) Curtail the range of beneficial uses of the environment;**
- (3) Conflicts with the State's long term environmental policies or goals and guidelines as expressed in Chapter 344, HRS; and any revisions thereof and amendments thereto, court decisions, or executive orders;**
- (4) Substantially affects the economic or social welfare of the community or State;**
- (5) Substantially affects public health;**
- (6) Involves substantial secondary impacts, such as population changes or effects on public facilities;**
- (7) Involves a substantial degradation of environmental quality;**
- (8) Is individually limited but cumulatively has considerable effect on the environment, or involves a commitment for larger actions;**
- (9) Substantially affects a rare, threatened or endangered species or its habitat;**
- (10) Detrimentially affects air or water quality or ambient noise levels;**
- (11) Affects or is likely to suffer damage by being located in an environmentally sensitive area, such as a flood plain, tsunami zone, beach, erosion-prone area, geologically hazardous land, estuary, fresh water, or coastal waters;**
- (12) Substantially affects scenic vistas and view planes identified in County or State plans or studies;**
- (13) Requires substantial energy consumption.**



# Mahalo



DEPARTMENT OF HAWAIIAN HOME LANDS

[www.dhhl.hawaii.gov](http://www.dhhl.hawaii.gov)