



HAWAIIAN HOME LANDS

HAWAIIAN HOMES COMMISSION • DEPARTMENT OF HAWAIIAN HOME LANDS

Item G-1

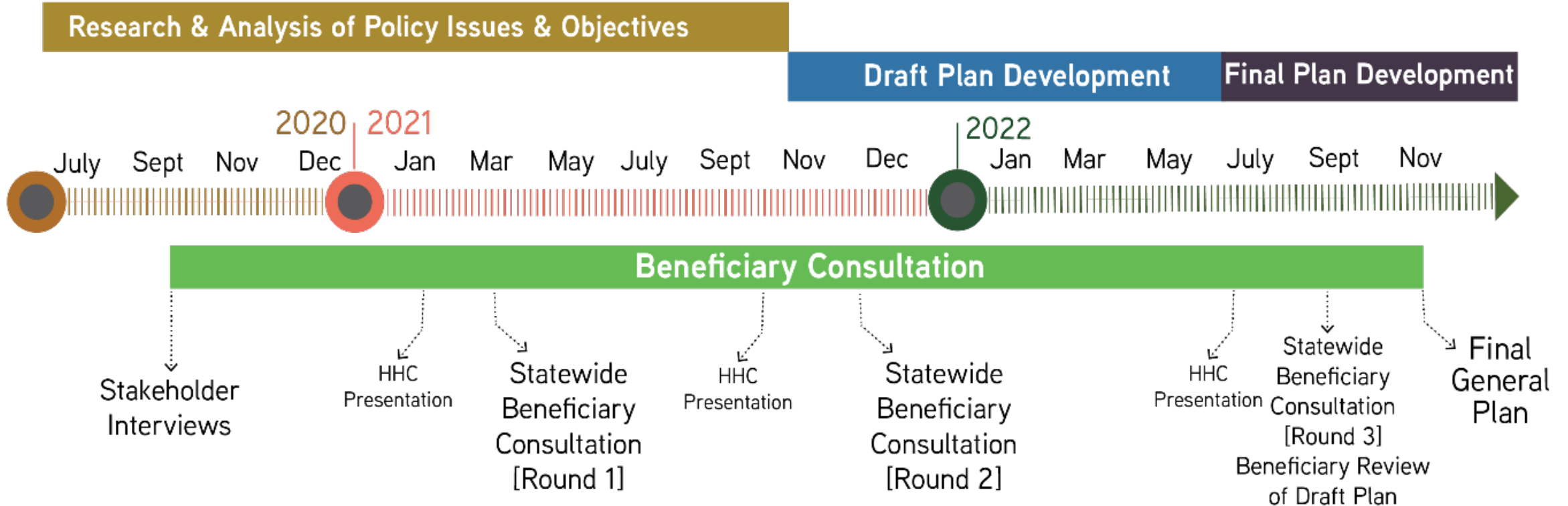
Adoption of the DHHL General Plan Update 2022

November 21-22, 2022



GENERAL PLAN UPDATE SCHEDULE

Project Timeline:





THE JOURNEY TO TODAY'S DISCUSSION

Investigative Committee Meetings

	Date
Meeting 1	Nov. 5, 2020
Meeting 2	Dec. 10, 2020
Meeting 3	Feb. 28, 2021
Meeting 4	July 13, 2021
Meeting 5	March 14 and April 4 2022
Meeting 6	April 21 and 27 2022
Meeting 7	Sept. 23, 26, and Oct. 10 2022

Beneficiary Consultation Meetings

	Date
Round 1 Part 1	March 3, 8, 9 2021
Round 1 Part 2	April 1, 5, 7 2021
Round 2	Nov. 3 & 4 2021 Dec. 6 & 7 2021 Jan. 19 & 20 2022 Feb. 16 & 17 2022
Round 3 (8 In-Person Statewide Meetings)	August 4, 6, 8, 9, 13, 17, 18, 22 2022



THE JOURNEY TO TODAY'S DISCUSSION

Meeting	Date	Discussion Focus
HHC Oct. 2020 Mtg.	10/19/20	Approve the HHC members of the General Plan Investigative Committee
Investigative Comm. #1	11/5/20	Discuss and seek group consensus on plan process and schedule. Start initial conversation regarding vision statement, plan components and report card of DHHL progress in meeting 2002 GP Goals.
Investigative Comm. #2	12/10/20	Continue identify core vision statement elements to present to beneficiaries; discuss report card findings to identify which policy areas DHHL should continue to focus on going forward and policy areas the Planning Team should put more time towards in via white papers
Investigative Comm. #3	1/28/21	Confirm policy areas of focus to be covered in white papers and get feedback on proposed beneficiary outreach process and topics in BC Round 1 meetings
HHC Feb. 2021 Mtg.	2/16/21	Announce the project and provide an overview of the planning process
BC Round 1 Part 1	3/3/21 & 3/8/21 & 3/9/21	Introduce the General Plan Update process to beneficiaries; present “report card” evaluation of DHHL progress to meet 2002 General Plan goals and policies; collect feedback on vision for next 20-years
BC Round 1 Part 2	4/1/21 & 4/5/21 & 4/7/21	Collect beneficiary feedback on a draft vision statement and on potential types of Land Use Designations they would like to see in the future



THE JOURNEY TO TODAY'S DISCUSSION

Meeting	Date	Discussion Focus
Investigative Comm. #4	7/13/21	Reviewed beneficiary feedback on draft vision statement and suggested changes, Policy Topics to focus on, and draft Land Use Designations
HHC Oct. 2021 Mtg.	10/18/21	Provide summary of BC Round 1 results and provide notice of BC Round 2 mtgs.
BC Round 2 Part 1	11/3/21 & 11/4/21	Collect beneficiary feedback on goals & policies related to Land Use, Water, and Infrastructure
BC Round 2 Part 2	12/6/21 & 12/7/21	Collect beneficiary feedback on goals & policies related to housing and food production
BC Round 2 Part 3	1/19/22 & 1/20/22	Collect beneficiary feedback on goals & policies related to healthy communities and natural / cultural resources
BC Round 2 Part 4	2/16/22 & 2/17/22	Collect beneficiary feedback on goals & policies related to economic development and revenue generation
Investigative Comm. #5	3/14/22 & 4/4/22	Reviewed and commented on draft land use designations, policy statements, and metrics
Investigative Comm. #6	4/21/22 & 4/27/22	Continued conversation on land use designations, draft policy statements, and metrics from Mtg 5; reached general consensus on language for Draft Plan to be presented to HHC and BC

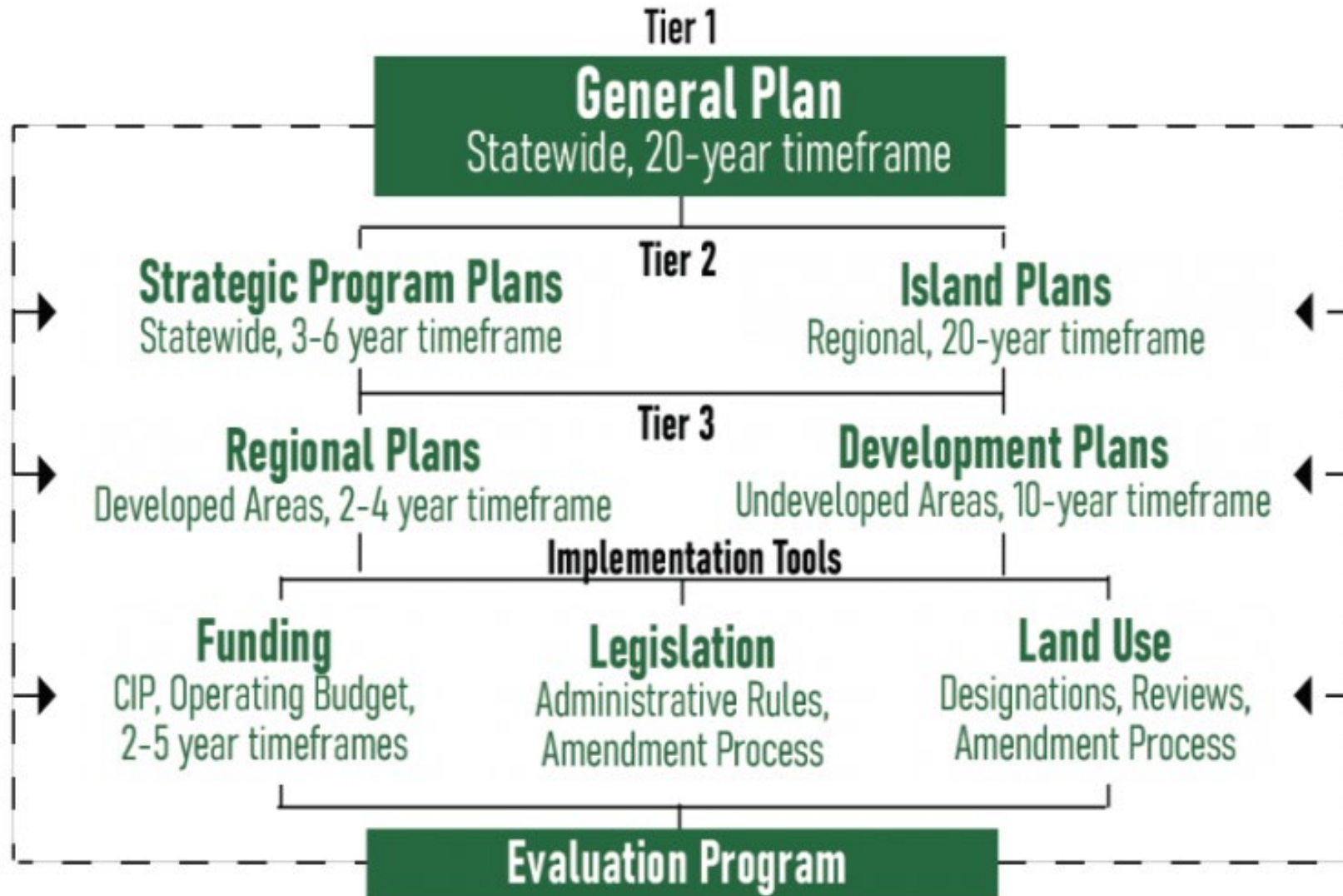


THE JOURNEY TO TODAY'S DISCUSSION

Meeting	Date	Discussion Focus
HHC July 2022 Mtg.		To present the Draft Plan to the HHC for review and provide notice of BC Round 3 mtgs.
BC Round 3 (8 meetings)	August 2022	Collect beneficiary feedback on the Draft Plan goals and policies
Investigative Comm. #7	9/23 & 9/26 & 10/10 2022	Review the policies that received mixed feedback from beneficiaries during Round 3; discuss revisions to those policies based on beneficiary feedback.
HHC Oct. Mtg	10/18/22	Provide recommendation of the Investigative Committee to the full Commission in the form of the Draft Final General Plan Update
HHC Nov. Mtg	11/21/22	Request HHC adoption of the General Plan Update 2022



DHHL PLANNING SYSTEM





HAWAII ADMINISTRATIVE RULES 10-4-55

10-4-51 Purpose.

The purpose of the planning system is to further the objectives of the act by systematically coordinating the management of Hawaiian home lands and programs in a manner that is comprehensive, consistent, and collaborative.

10-4-53 General Framework

“...Tier 1 is the top tier consisting of the general plan and shall establish overall policy...”

10-4-55 General plan (tier 1)

“...the general plan shall establish statewide policies that guide land management and programs. At a minimum, the general plan shall:

1. Establish a uniform system of land use designations that all island plans shall use;
2. Establish the relationship between land use designations and the applicable types of land dispositions;
3. Establish criteria to identify suitable lands for homesteading;
4. Establish criteria to determine available lands not required for homesteading within the planning period;
5. Establish criteria to identify lands for revenue generation;
6. Establish criteria to identify lands for community use and policies to govern how the community could manage such lands for community building;
7. Establish level of service standards for infrastructure and community facilities, or specify a program plan or methodology to develop such standards;
8. Specify indicators to measure progress and evaluate effectiveness in meeting policy goals.



Draft General Plan Overview

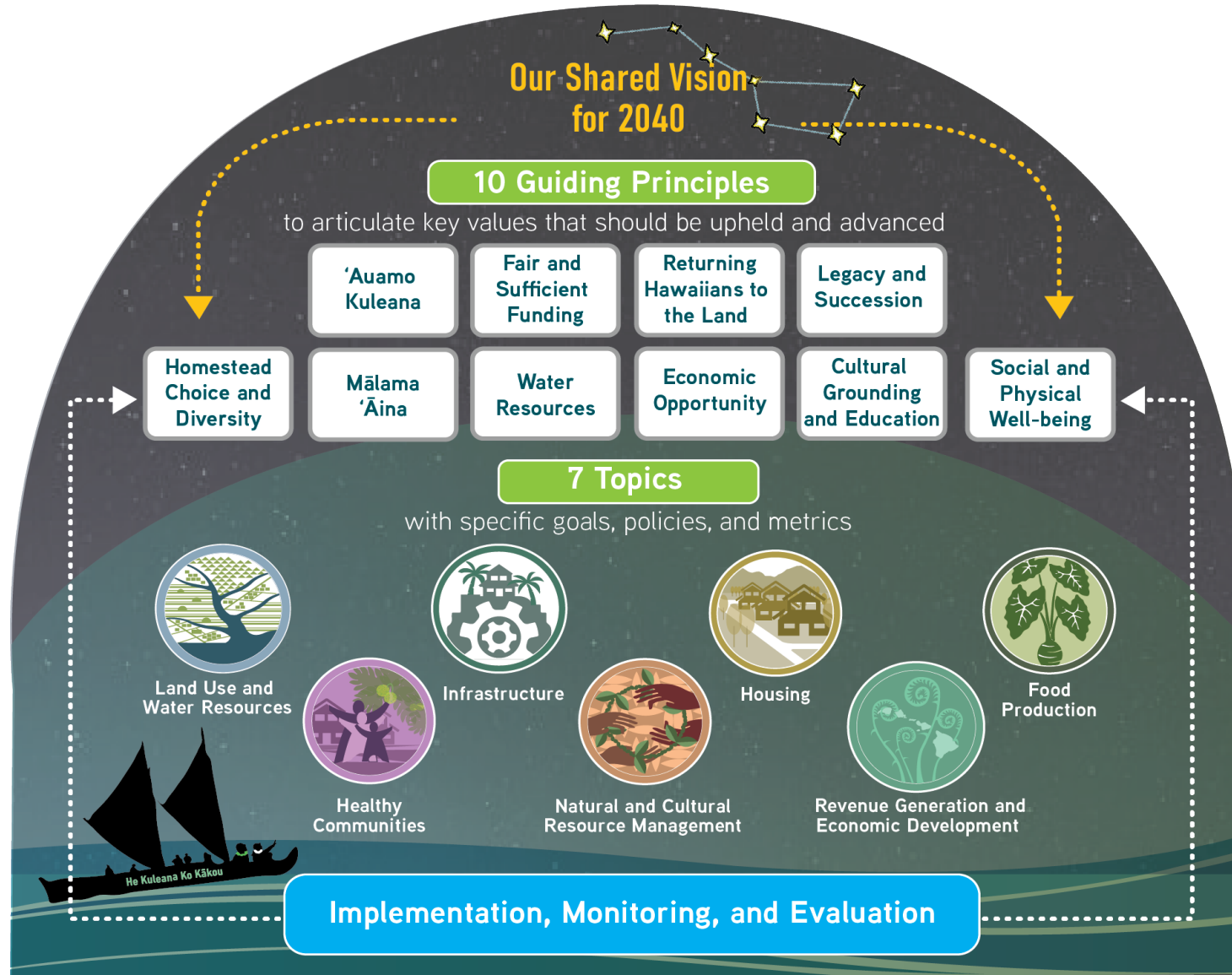
DHHL GENERAL PLAN

Department of Hawaiian Home Lands
General Plan Update
JULY 2022
Beneficiary Review Draft

*Presented Draft to Hawaiian
Homes Commission July 18, 2022
for information and comments*



GENERAL PLAN POLICY FRAMEWORK





PLAN ORGANIZATION – POLICY CHAPTERS

Seven chapters provide policy direction along with goals, policies, and metrics for the Department.

GOALS

- Are broad statements articulating a desired end state.

POLICIES

- Are the roads leading to the more general goals.
- There may be multiple policies necessary to achieve a goal.

METRICS

- Ways to measure if policies are achieving the desired result or end goal.

CLIMATE CHANGE CONSIDERATIONS

- Climate change is addressed under each policy topic.



PLAN ORGANIZATION – INTRO & BACKGROUND CHAPTERS

The General Plan Update includes 10 chapters, beginning with three introductory and background sections:

- 1. General Plan Overview**
- 2. Framework, Vision and Guiding Principles**





POLICY CHAPTERS – POLICY DIRECTION



CH. 3: Land Use and Water Resources – How DHHL determines appropriate uses for trust lands and water resources.



CH. 4: Infrastructure – How DHHL provides infrastructure to homestead developments, including level of service criteria for different land use designations and contexts.



CH. 5: Housing – How DHHL addresses the housing needs of its beneficiaries.



CH. 6: Food Production – How DHHL manages its lands to support food production through homestead leases and other means.



POLICY CHAPTERS – POLICY DIRECTION



CH. 7: Healthy Communities - How DHHL fosters beneficiary communities that are self-sufficient, healthy, resilient, and grounded in cultural knowledge and traditions.



CH. 8: Natural and Cultural Resource Management - How DHHL stewards and manages lands that are undeveloped or have ecological and cultural resources.



CH. 9: Revenue Generation and Economic Development - how DHHL generates revenue to support the continued advancement of native Hawaiians and provides economic opportunities for beneficiaries on Trust lands.



CH. 10: MONITORING & EVALUATION FRAMEWORK

01

Identify metrics and data sources that align with General Plan goals and policies.

Prioritize and optimize internal data currently being collected and/or tracked by DHHL over external sources.

02

Identify roles and responsibilities for collecting, monitoring, and organizing data.

Leverage existing roles and processes such as annual reports, federal reporting requirements and Chairperson strategic planning.

03

Secure agreements to access and track external data.

Consider working with Native Hawaiian serving and other organizations currently leasing DHHL lands.

04

Establish an implementation and evaluation schedule

Establish baseline measurements for each outcome. Consider DHHL priorities and constraints.

05

Establish a reporting and dissemination process

Consider a variety of reporting formats to build transparency and accountability on part of DHHL.

15



HAWAII ADMINISTRATIVE RULES 10-4-55

GENERAL PLAN MINIMUM REQUIREMENTS:

- 1. Establish a uniform system of Land Use Designations that all Island Plans shall use;**
- 2. Establish the relationship between land use designations and the applicable types of land dispositions;**
- 3. Establish criteria to identify suitable lands for homesteading;**
- 4. Establish criteria to determine available lands not required for homesteading within the planning period;**
- 5. Establish criteria to identify lands for revenue generation;**
- 6. Establish criteria to identify lands for community use and policies to govern how the community could manage such lands for community building;**
- 7. Establish level of service standards for infrastructure and community facilities, or specify a program plan or methodology to develop such standards; and**
- 8. Specify indicators to measure progress and evaluate effectiveness in meeting policy goals.**



HAWAI'I ADMINISTRATIVE RULES 10-4-55: MINIMUM REQUIREMENTS

HAR 10-4-55 Criteria

General Plan Chapter(s) HAR Criteria is Addressed

1. Establish a uniform system of Land Use Designations that all Island Plans shall use;

Ch. 3 (Land Use) Sections 3.3.1; 3.3.2; and 3.3.4
*Appendix E (Land Use White Paper) Section 3.4**

2. Establish the relationship between land use designations and the applicable types of land dispositions;

Ch. 5 Table 10; Ch. 6 Table 12; Ch. 7 Table 14; Ch. 8 Table 16; Ch 9 Table 18
*Appendix E (Land Use White Paper) Section 6.1**

3. Establish criteria to identify suitable lands for homesteading;

Ch. 3 (Land Use) Sections 3.1.2; 3.3.3; and 3.3.4
*Appendix E (Land Use White Paper) Section 4.2**

4. Establish criteria to determine available lands not required for homesteading within the planning period;

Ch. 3 (Land Use) Sections 3.1.2; 3.3.3; and 3.3.4
*Appendix E (Land Use White Paper) Section 4.3**

5. Establish criteria to identify lands for revenue generation;

Ch. 3 (Land Use) Sections 3.3.3; and 3.3.4
*Appendix E (Land Use White Paper) Section 4.3.F**

6. Establish criteria to identify lands for community use and policies to govern how the community could manage such lands for community building;

Ch. 3 (Land Use)
*Appendix E (Land Use White Paper) Sections 4.3.D; 4.3.E**

7. Establish level of service standards for infrastructure and community facilities, or specify a program plan or methodology to develop such standards; and

Ch. 4 (Infrastructure) Section 4.3.2

8. Specify indicators to measure progress and evaluate effectiveness in meeting policy goals.

All policies (Ch. 3-9)
Ch. 10 (Monitoring and Evaluation) section 10.2 includes a suggested monitoring and evaluation framework

*** Appendix E Land Use White Paper referenced for guidance on applying criteria in GP Sections 3.3.2 & 3.3.4**



Revisions to the Draft General Plan Update

DHHL GENERAL PLAN

Department of Hawaiian Home Lands
General Plan Update
JULY 2022
Beneficiary Review Draft

*Presented Draft to Hawaiian
Homes Commission July 18, 2022
for information and comments*



Beneficiary Consultation – Round 3 Recap

- Eight in-person Open House Meetings in August
- Virtual Open House (8/4-9/22)

Island - Location	Date & Time
O‘ahu - Kapolei	Thu., 8/4/22
Lāna‘i - Lāna‘i City	Sat., 8/6/22
East Hawai‘i - Hilo	Mon., 8/8/22
West Hawai‘i - Waimea	Tue., 8/9/22
Moloka‘i – Kaunakakai	Sat., 8/13/22
Kaua‘i – Līhu‘e	Wed., 8/17/22
Maui - Waiohuli	Thu., 8/18/22
O‘ahu - Honolulu	Mon., 8/22/22





Beneficiary Consultation – Round 3 Recap

In-Person Open Houses

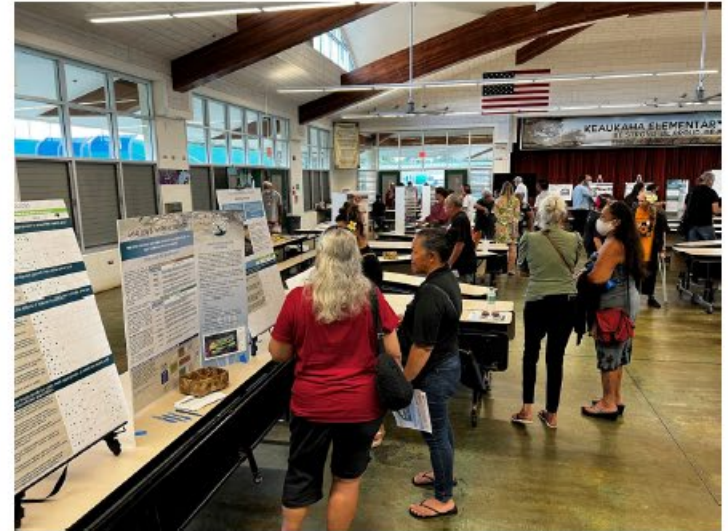
Total Number of Attendees: 222

Total Number of Comment Cards: 127

Virtual Open House

Total Number of Visitors: 478

Total Number of Comments: 17



HOW TO PROVIDE COMMENTS

Add directly to the plan document by clicking on text/area and typing your comment.

Respond to or add to other comments

React to other comments & observations by up-/down-voting

DHHL General Plan Update - Internal Review Draft

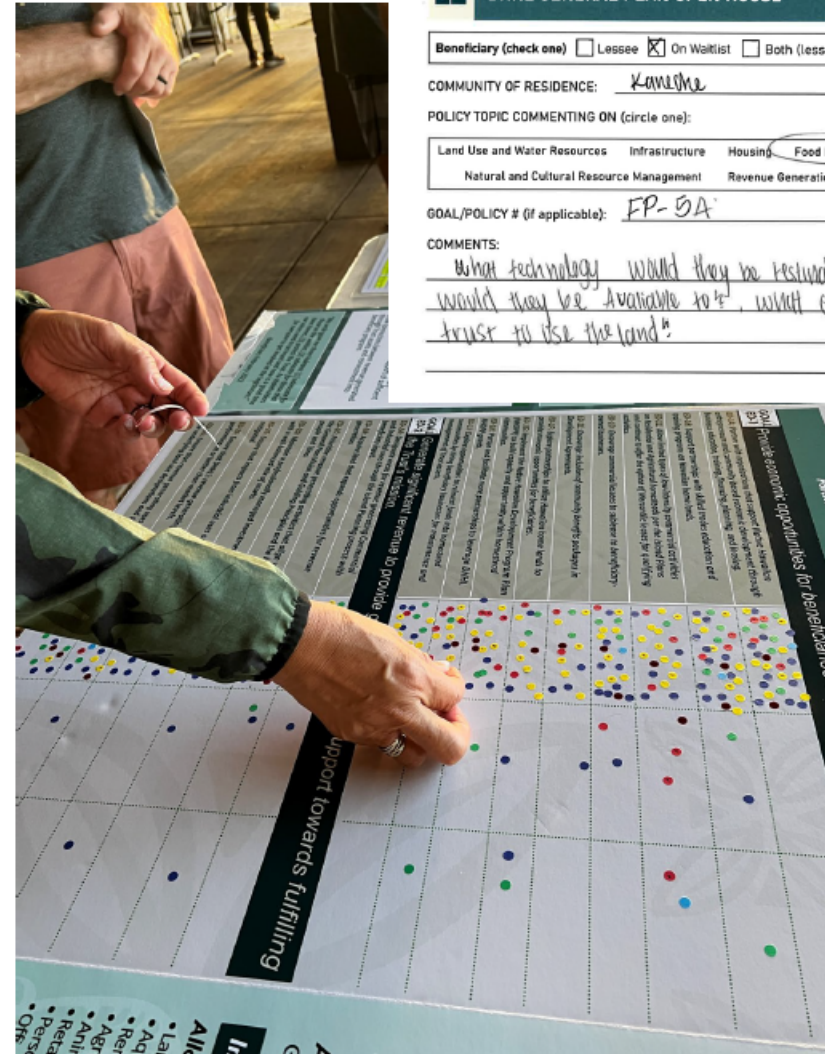




Beneficiary Consultation – Round 3 Recap

- Participants were asked to indicate their level of support for each policy by placing a sticker in one of three columns: thumbs-up, “neutral”, thumbs-down
 - Green = O‘ahu (Kapolei/Honolulu)
 - Blue = Hawai‘i Island (Hilo/Waimea)
 - Yellow = Lāna‘i (black dot) & Kaua‘i
 - Red = Moloka‘i (black dot) & Maui
- Comment cards were also available for written comments

All goals/policies received overwhelming support, with the majority 100% support, but a handful received more mixed support



DHHL GENERAL PLAN OPEN HOUSE

Beneficiary (check one) Lessee On Waitlist Both (Lessee & waitlist) Other

COMMUNITY OF RESIDENCE: Kaunoi

POLICY TOPIC COMMENTING ON (circle one):

Land Use and Water Resources	Infrastructure	Housing	Food Production	Healthy Communities
Natural and Cultural Resource Management	Revenue Generation and Economic Development			

GOAL/POLICY # (if applicable): FP-5A

COMMENTS:
What technology would they use to restore how would they be available to? which company would we trust to use the land?

Text, table
Description auto



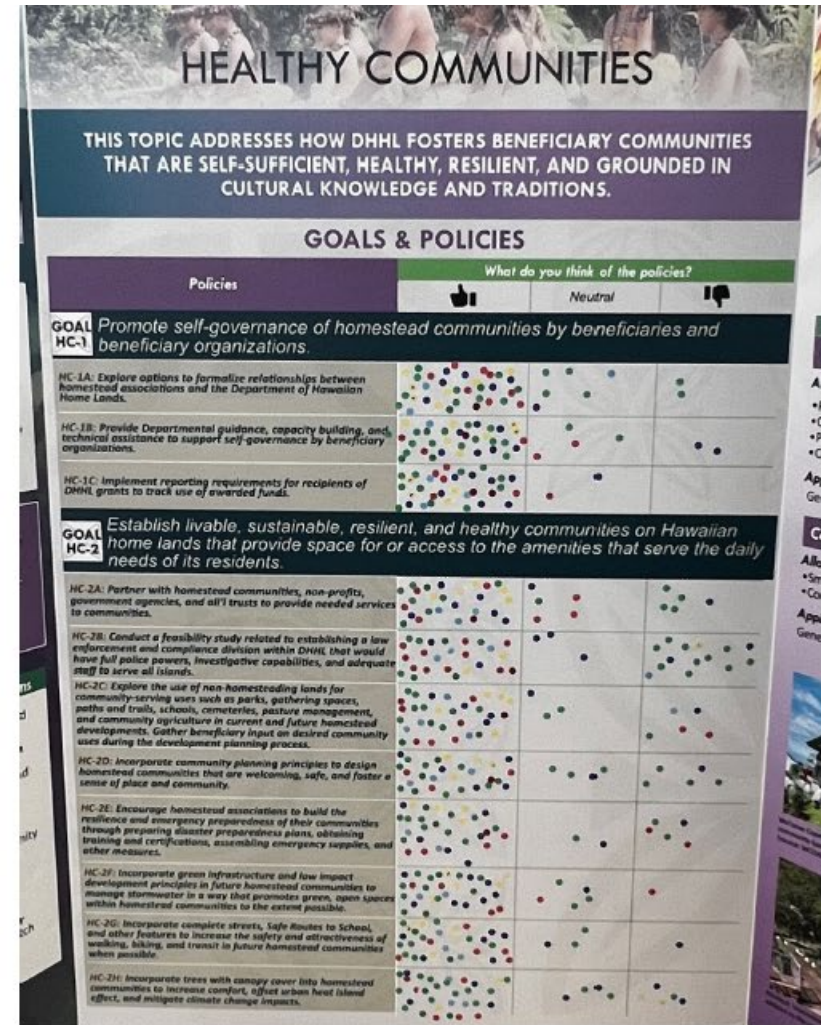
Types of Policies Receiving Mixed Feedback

- **Non-homestead uses:** Opportunities that could potentially involve non-beneficiary use of DHHL lands
- **Partnerships with non-beneficiary organizations:** Policies that identify partnerships with non-beneficiary organizations
- **Increasing staff:** Policies that explicitly call for hiring additional staff
- **Infrastructure:** Policies encouraging the dedication of infrastructure to Counties and building to less County standards
- **Enforcement:** Policies related to DHHL taking a stronger role in enforcement



Policy Revision Process

1. Document Open House dot voting on poster boards and analyze comments received
2. Policies receiving mixed feedback in BC were revisited with Policy Investigative Committee
3. Revisions and rationale were proposed and discussed before reaching consensus on revisions





Summary of Policy Revisions in Draft Final GP

1. Land Use Policies

- Added language highlighting increasing homesteading opportunities as key consideration when acquiring or exchanging lands
- Added language specifying that partnerships and projects accessing and managing of HHL for non-homestead uses should align with the Trust
- Added language stating desired qualifications for new DHHL staff to include ability to work with beneficiaries, build relationships and follow through on commitments
- Added language clarifying that revenue generating activities on undeveloped HHL should be consistent with underlying DHHL land use designations
- Confirmed need for more robust enforcement by DHHL and establishment of an enforcement branch



Summary of Policy Revisions in Draft Final GP

2. Infrastructure

- Clarified language from “dedicating” infrastructure to “licensing” infrastructure to Counties to accurately reflect the process used and clarify that DHHL does not intend to transfer ownership of infrastructure assets

3. Healthy Communities

- Removed policy related to feasibility study for enforcement and compliance – HHC has established need and is pursuing legislation
- Added language addressing need to balance desire for amenities by existing lessees with the need for more housing opportunities by applicants on waiting list
- Added language emphasizing the importance of managing community serving uses through partnerships



Summary of Policy Revisions in Draft Final GP

3. Natural and Cultural Resource Management

- Added language emphasizing need for increased hiring of qualified staff within DHHL dedicated to natural and cultural resource management

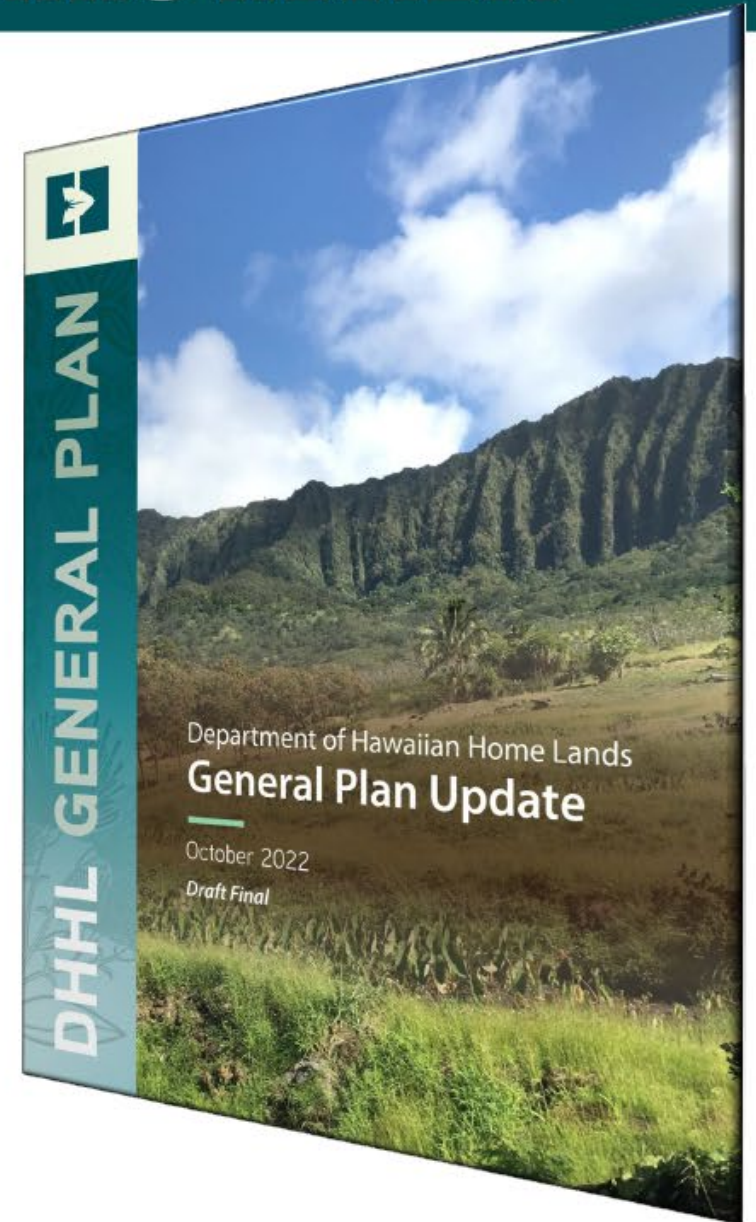
4. Revenue Generation and Economic Development

- Added language acknowledging legal constraints DHHL and HHC should be aware of whenever specifying preference for beneficiary businesses through general procurement process



DRAFT FINAL GENERAL PLAN HHC REVIEW

Staff Respectfully Requests
that the Hawaiian Homes
Commission Adopt the DHHL
General Plan Update 2022





Mahalo

Ho‘o Nāinau