



HAWAIIAN HOME LANDS

HAWAIIAN HOMES COMMISSION · DEPARTMENT OF HAWAIIAN HOME LANDS

Item G-5

Draft Environmental Assessment Waimea Nui Regional Community Development Initiative Kipuka o ke Ola Clinic Relocation

Pu'ukapu, Waimea, Hawai'i Island

October 17 – 18, 2022



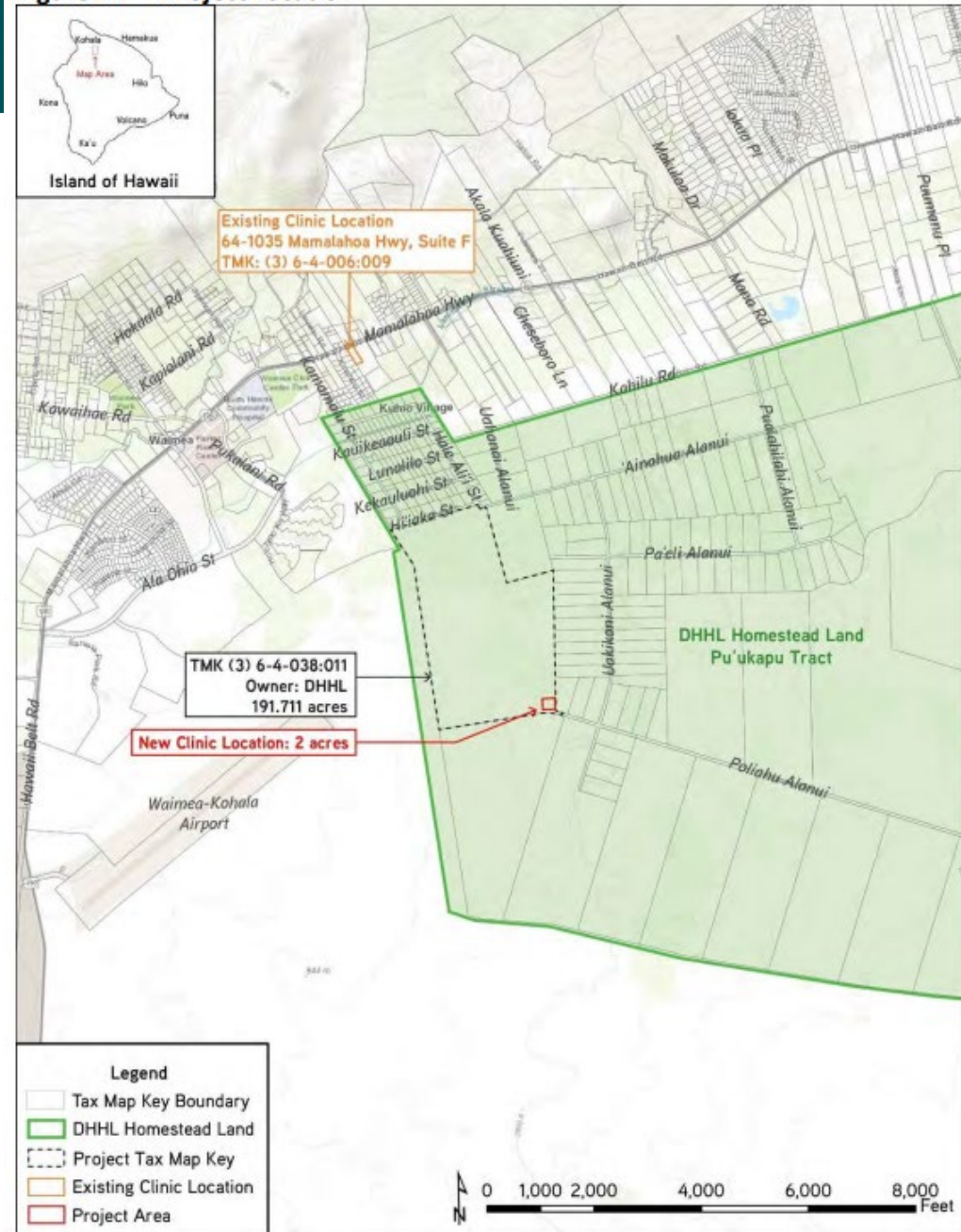
Presentation Agenda

- Project location
- Project background
 - Project partners
 - Purpose and need
 - Project history
- Project scope and details
- Draft Environmental Assessment findings
- Next-Steps



Project Location

Figure 1: Project Location





Project Background

- Project Partners
 - Waimea Hawaiian Homesteaders Association Inc.
 - Kīpuka o ke Ola (Medical Division of Waimea Hawaiian Homestead Association)





Project Background

- Purpose and need





Project Background

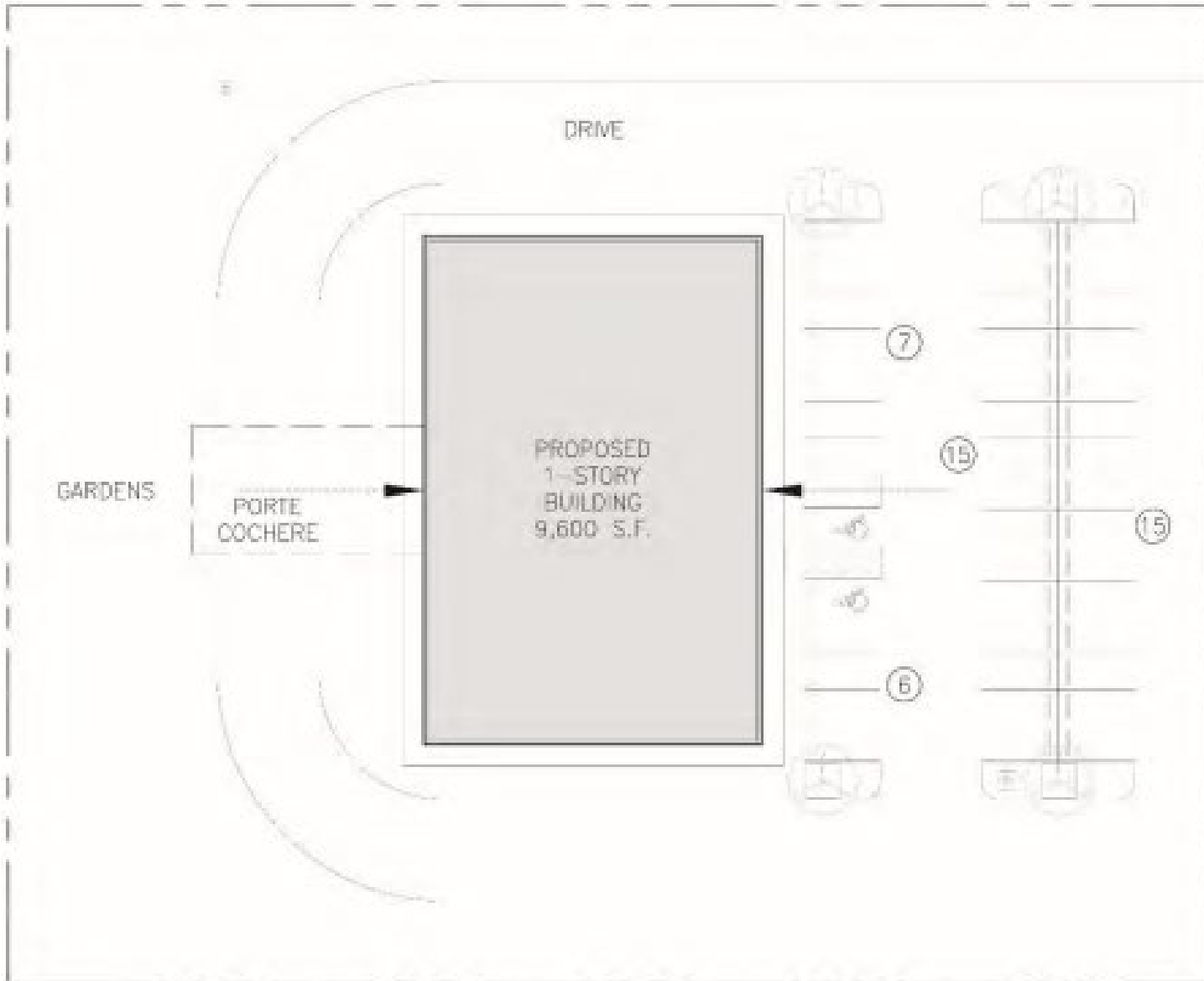
- Project history
 - May 2015 HHC approved Final EA for Waimea Nui Initiative
 - Nov. 2015 HHC approved General Lease to Waimea Nui for 161-acre parcel
 - 2021 WHHAI initiated EA for KOKO clinic relocation in portion of the planned equestrian center location



Source: Group 70 International



Project Scope and Details





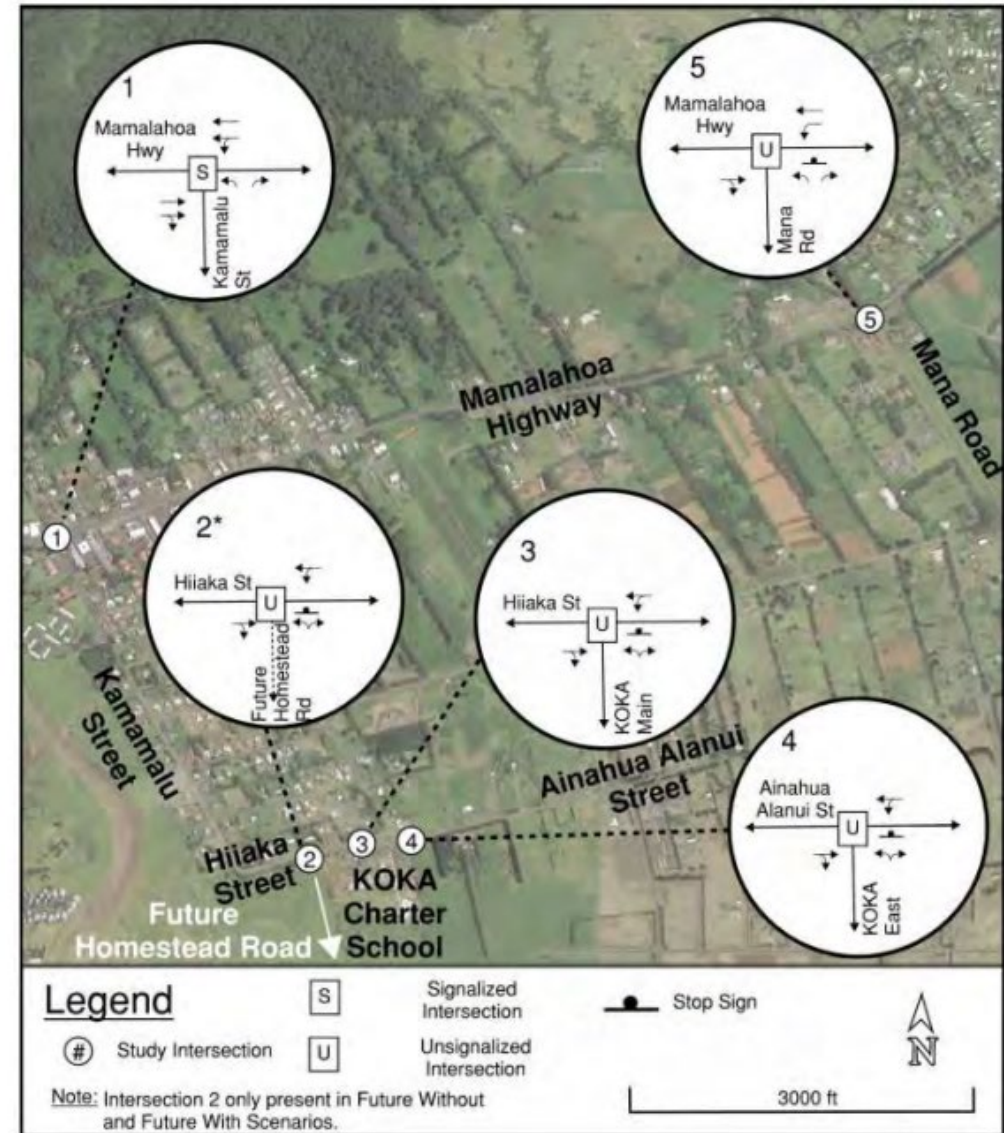
Draft Environmental Assessment Findings

- Existing site conditions did not dramatically change since the 2015 Final EA. Previous studies from the 2015 Final EA were still valid:
 - Botanical survey
 - Avian and mammalian survey
 - Archaeological inventory survey
- Water availability
 - County DWS confirmed 10,000 gallons per day available on its system for Clinic
- Wastewater
 - On-site individual wastewater system will be utilized

Draft Environmental Assessment Findings

- An update to the 2015 traffic impact analysis report was conducted as part of this DEA process
- The KOKO Clinic is anticipated to generate 30 to 37 trips in the AM and PM peak hours, respectively.
- The low number of trips are not expected to have a significant impact on the surrounding road network
- Intersection along Mamalahoa Hwy and Mana Road should be studied in the future with HDOT to assess need for traffic signal

Figure 12: Existing Study Intersections and Lane Configurations





FONSI is based on 13-Criteria of Significance

Per HAR 11-200-12 a Proposed Action does not:

- (1) Involve an irrevocable commitment to loss or destruction of any natural or cultural resource;**
- (2) Curtail the range of beneficial uses of the environment;**
- (3) Conflicts with the State's long term environmental policies or goals and guidelines as expressed in Chapter 344, HRS; and any revisions thereof and amendments thereto, court decisions, or executive orders;**
- (4) Substantially affects the economic or social welfare of the community or State;**
- (5) Substantially affects public health;**
- (6) Involves substantial secondary impacts, such as population changes or effects on public facilities;**
- (7) Involves a substantial degradation of environmental quality;**
- (8) Is individually limited but cumulatively has considerable effect on the environment, or involves a commitment for larger actions;**
- (9) Substantially affects a rare, threatened or endangered species or its habitat;**
- (10) Detrimentially affects air or water quality or ambient noise levels;**
- (11) Affects or is likely to suffer damage by being located in an environmentally sensitive area, such as a flood plain, tsunami zone, beach, erosion-prone area, geologically hazardous land, estuary, fresh water, or coastal waters;**
- (12) Substantially affects scenic vistas and view planes identified in County or State plans or studies;**
- (13) Requires substantial energy consumption.**



Next-steps

- DEA will be published in the Environmental Notice Bulletin on October 23, 2022.
- 30-day comment period Oct. 23 to November 22, 2022.
- KOKO and DHHL will review comments received and revise the DEA as needed based on public comment.
- Final EA is tentatively anticipated to be presented to HHC in December 2022.



Mahalo



DEPARTMENT OF HAWAIIAN HOME LANDS

www.dhhl.hawaii.gov