



HAWAIIAN HOME LANDS

HAWAIIAN HOMES COMMISSION · DEPARTMENT OF HAWAIIAN HOME LANDS

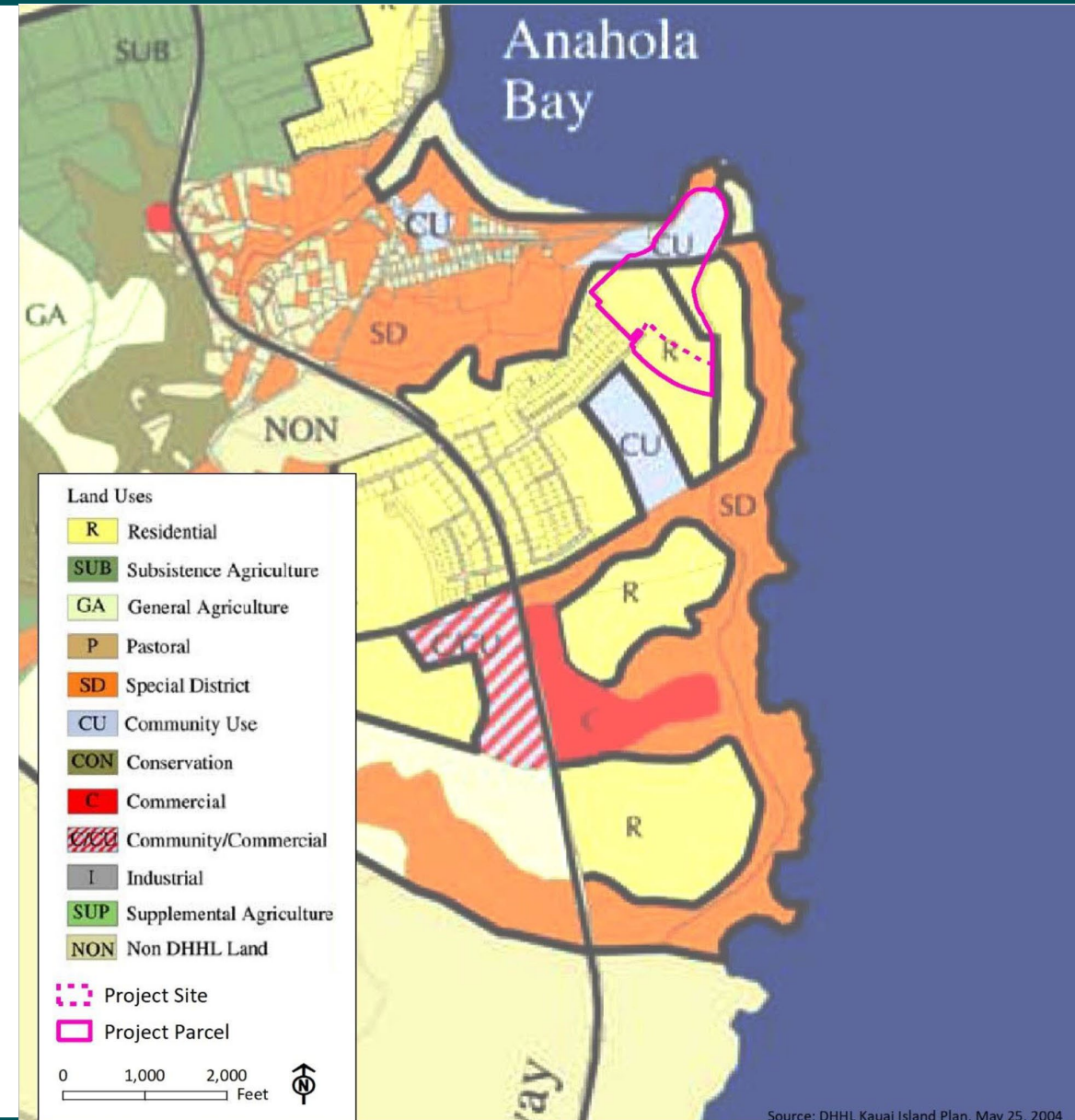
**G-2**

**Amend Kauaʻi Island Plan to Relocate 10 acres of  
Community Use in Anahola, Kawaihau, Kauaʻi**

October 17-18, 2022

# Existing Land Use Plan, Anahola

- Based on an analysis of the 2004 KIP Anahola/Kamalomalo‘o Land Use Plan and the 2005 Anahola Residence Lots Unit 6 Final EA, a total of 24 acres of Community Use was proposed for the Anahola Residential homestead area, now known as Pi‘ilani Mai Ke Kai.
- (10.5) acres has been approved for community use by the Kanu I Ka Pono Charter School for a Native Hawaiian Cultural Learning Center and community park, leaving thirteen and one-half (13.5) acres of Community Use area available.
- KKOA is requesting 10 acres of Community Use area for the Ulupono Anahola Project.

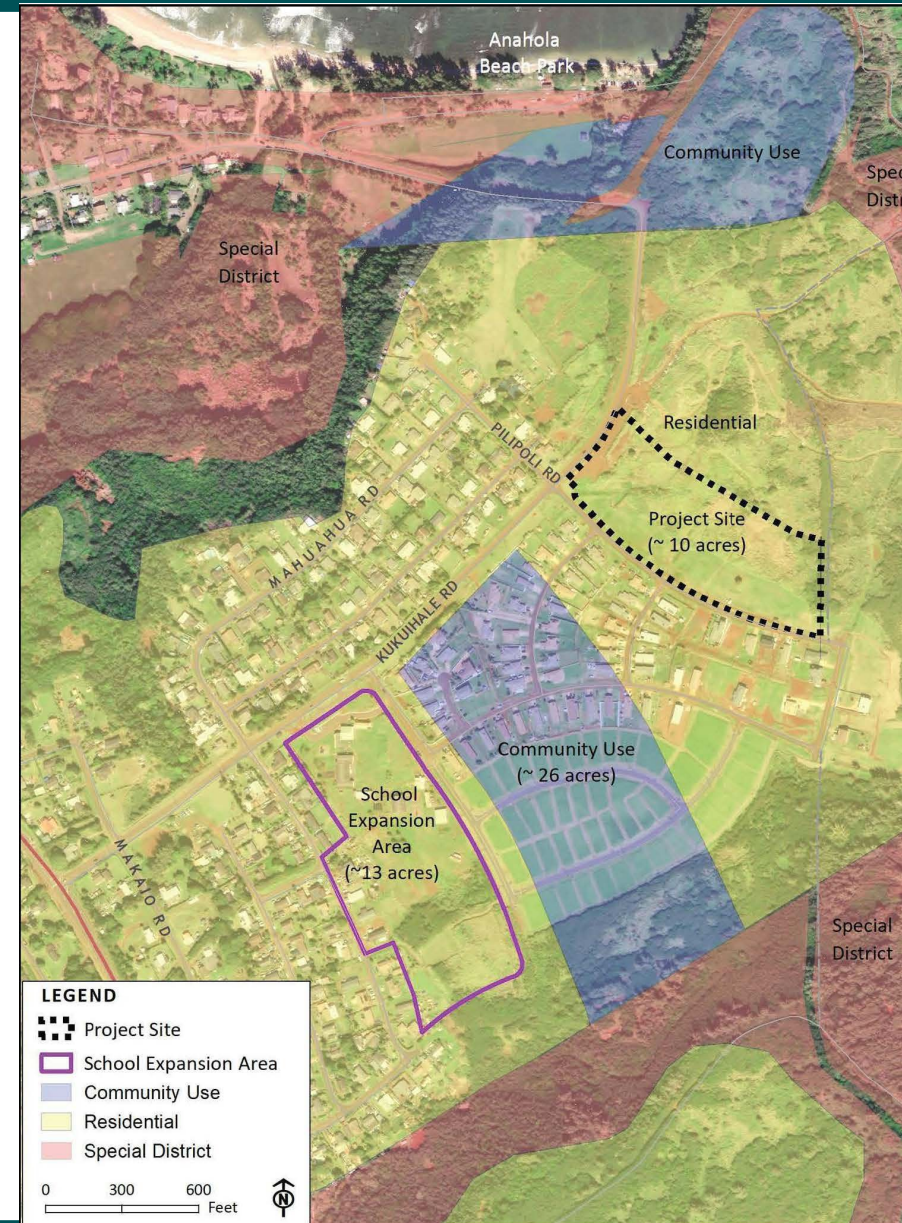






# Recommended Land Use Map Revision to Amend KIP

- The proposed land use designation change relocates 10 acres out of 24 acres of Community Use to the portion of TMK (4) 4-8-003:019 that is currently under license to KKOA for the Ulupono Project.
- DHHL engaged in a Beneficiary Consultation for Ulupono Anahola Project with the Anahola homestead community in August of 2019, and the BC Report was accepted by HHC in Sept. of 2019.
- Land use changes were not identified during BC and planning process for Anahola Ulupono due to mapping errors.
- There will be no net loss of Residential Homestead area due to the relocation of CU

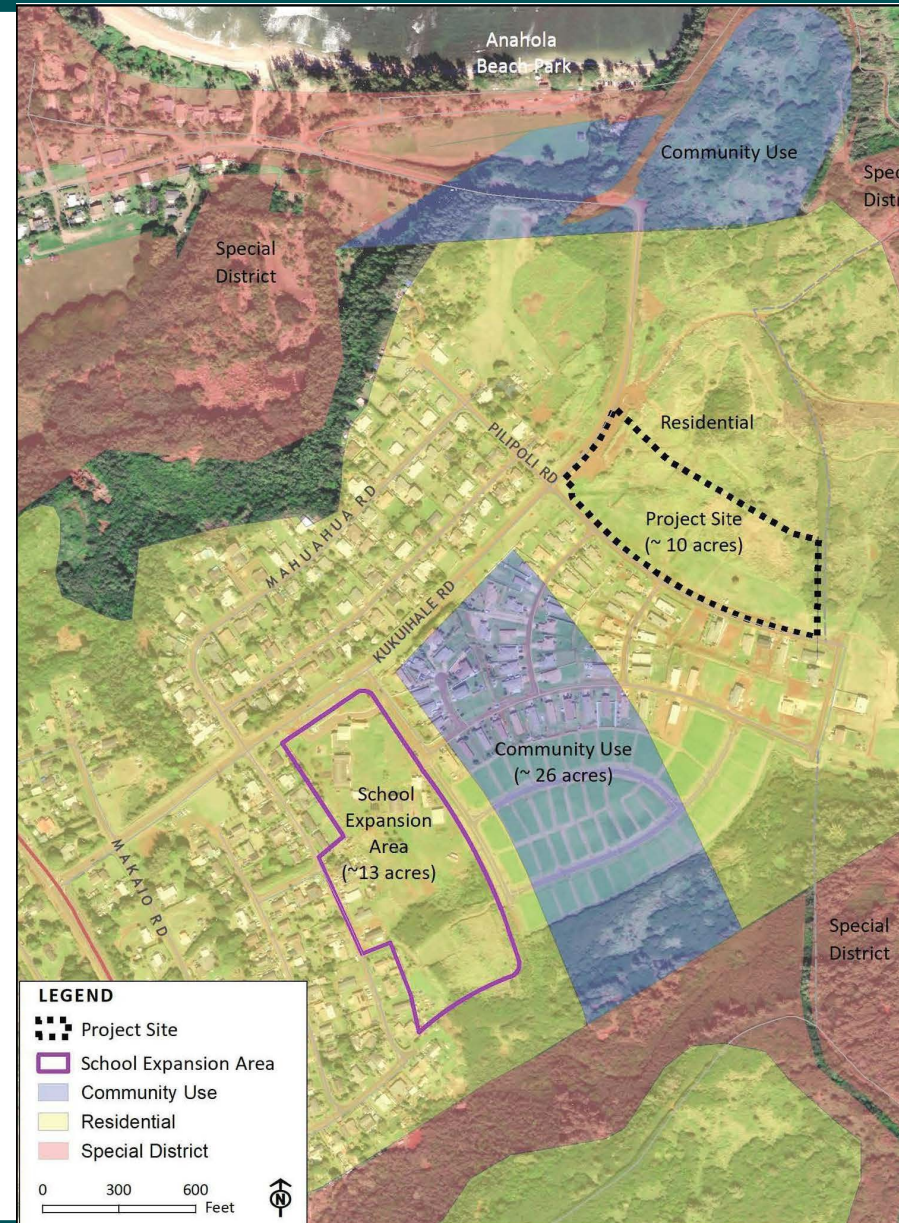






# Recommended Land Use Map Revision to Amend KIP

- Additional community outreach has been regularly conducted by KKOA over the last several years to solicit community ideas for the project
- 13 community organizations were consulted as part of the environmental review process.
- KKOA has presented to the HHC on multiple occasions over the last several years.
- DHHL beneficiaries have therefore had multiple opportunities for input during the development of the Ulupono Anahola Project.
- Due to this being a relocation of LUD, not a change in total acreage, the Planning Office did not require additional Beneficiary Consultation for this Land Use Amendment.





# Mahalo!



DEPARTMENT OF HAWAIIAN HOME LANDS

[www.dhhl.hawaii.gov](http://www.dhhl.hawaii.gov)