



HAWAIIAN HOME LANDS

HAWAIIAN HOMES COMMISSION · DEPARTMENT OF HAWAIIAN HOME LANDS

G-1

Status Update on Plan Implementation

Island of Kauaʻi

August 15-16 2022

DHHL's Planning System





Existing Plans & Implementation Status

Kaua'i Island Plan (KIP, adopted by HHC in 2004)

The purpose of each DHHL Island Plan is to:

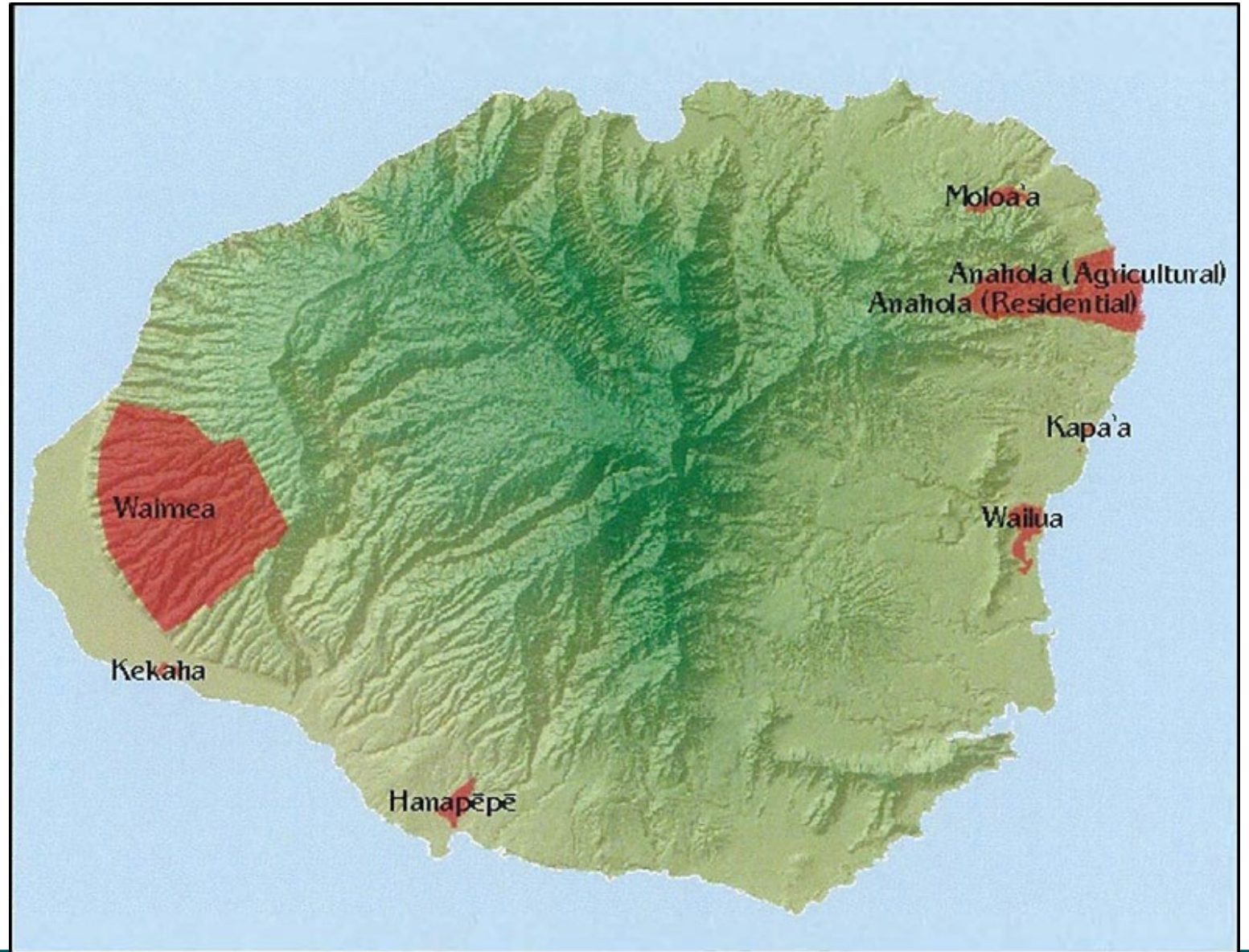
- 1) Provide a comprehensive resource for planning and land management purposes, including identification of land use goals and objectives of the General Plan specific to each island,
- 2) Identify island-wide needs, opportunities, and priorities, and
- 3) Assign land use designations (LUD's) for all land holdings to promote orderly land use and efficient development of infrastructure systems.



Kaua'i Planning Areas

The KIP identified seven planning areas:

- Waimea
- Kekaha
- Hanapēpē
- Wailua
- Kapa'a
- Anahola/
Kamalomalo'o
- Moloa'a



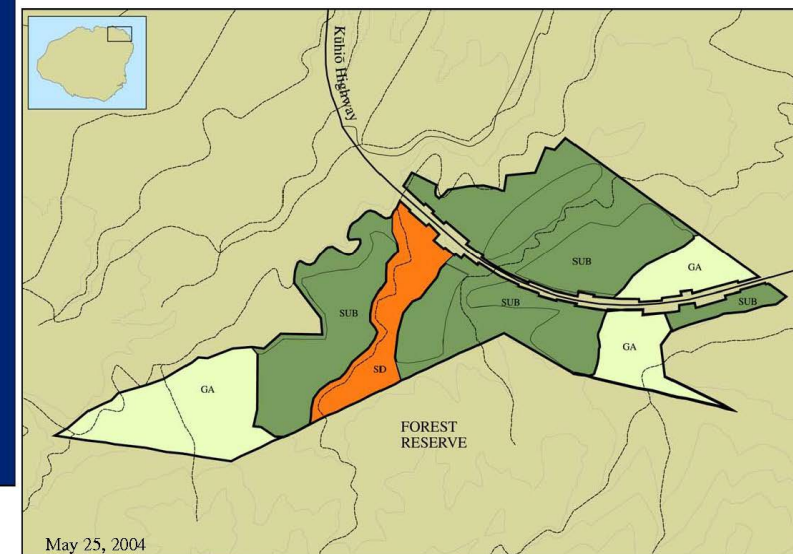
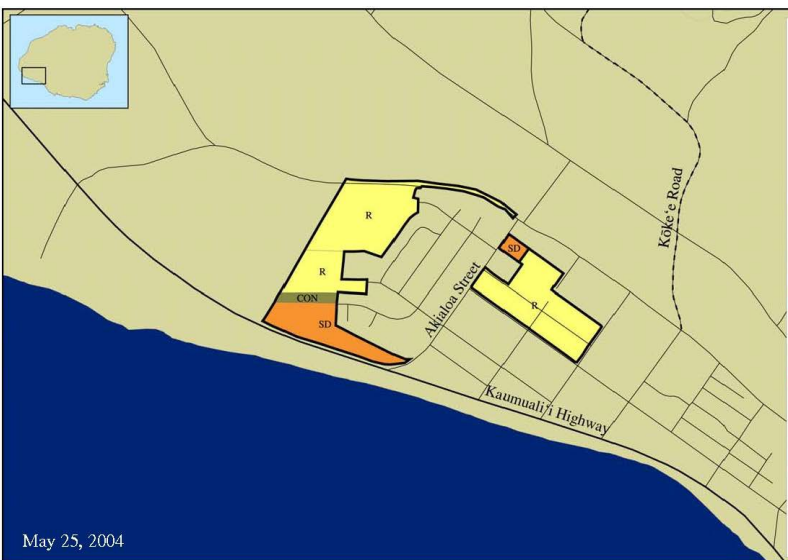
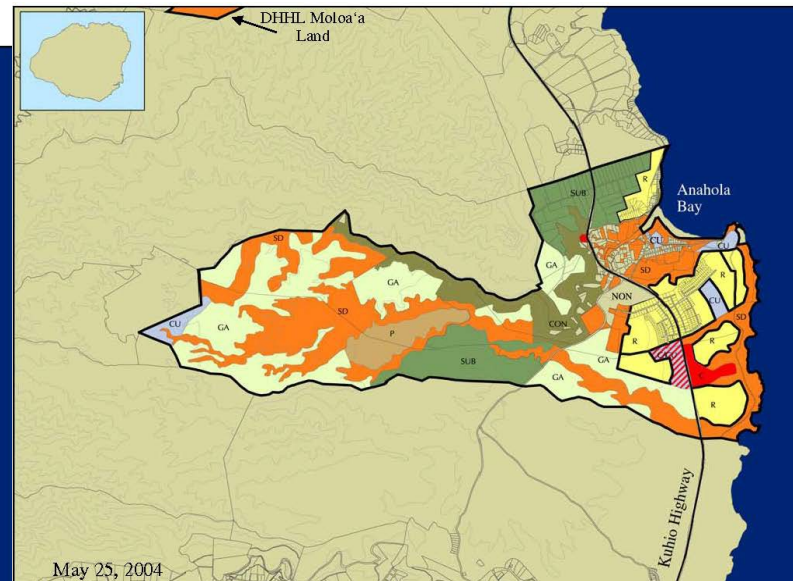
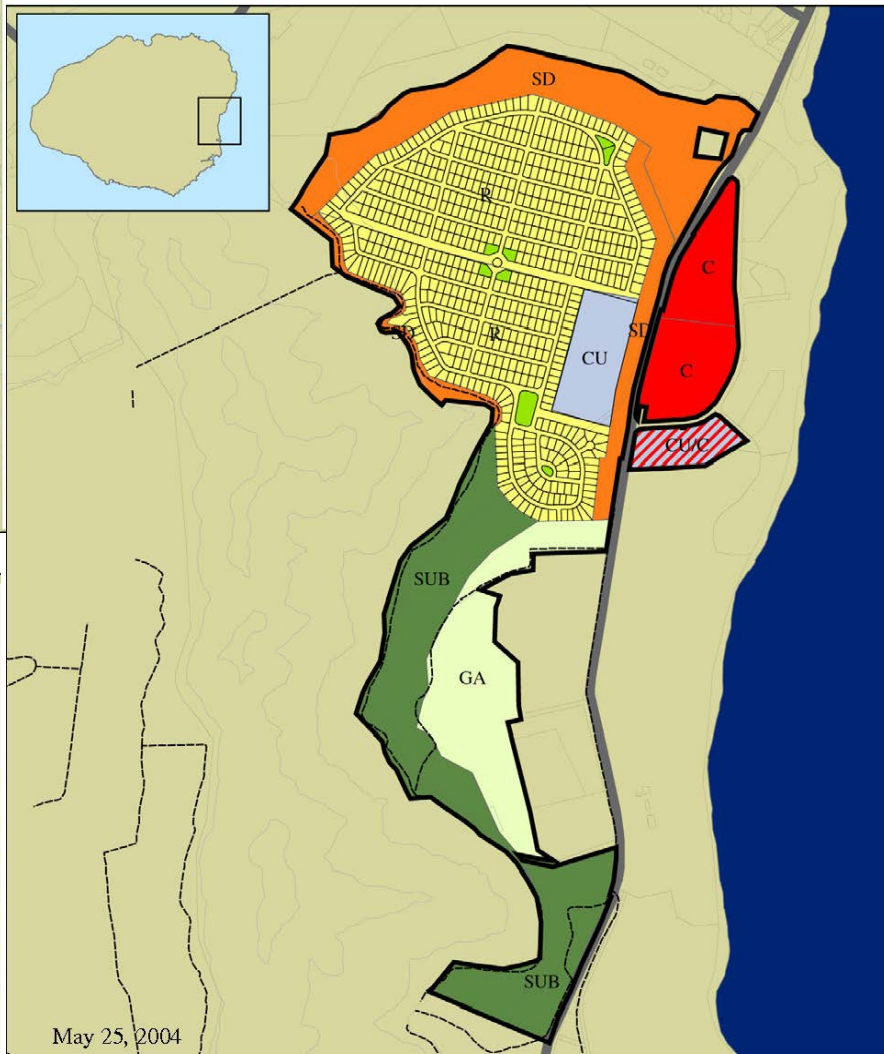
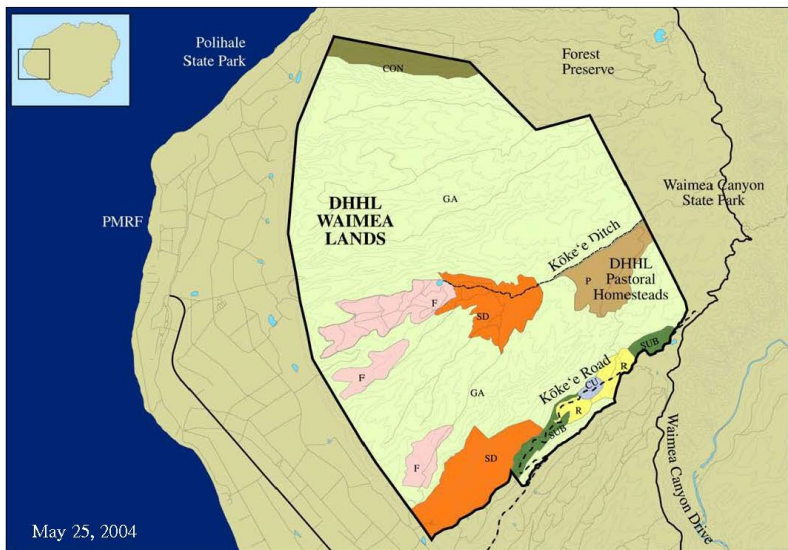


Kaua'i Island Acreage by Land Use Designation

Land Use Designation	WAIMEA (Acres)	KEKAHA (Acres)	HANAPĒPĒ (Acres)	WAILUA (Acres)	KAPA'A (Acres)	ANAHOLA (Acres)	MOLOA'A (Acres)	TOTAL (Acres)	%
Residential	202	39	168	216	0	565	0	1,190	5.79%
Subsistence Agriculture	214	0	158	99	0	533	200	1,204	5.85%
Supplemental Agriculture	0	0	0	0	0	0	0	0	0.00%
Pastoral	475	0	0	0	0	148	0	623	3.03%
General Agriculture	12,527	0	0	52	1	1,018	86	13,684	66.54%
Special District	1,258	13	0	92	0	1,419	30	2,812	13.67%
Community Use	42	0	22	20	0	127	0	211	1.03%
Conservation	343	0	0	0	0	350	0	693	3.37%
Commercial	0	0	17	47	0	68	0	132	0.64%
Industrial	0	0	0	0	16	0	0	16	0.08%
TOTALS	15,061	52	365	526	17	4,228	316	20,565	100.00%



KIP Land Use Plans





Homestead Development Priorities / Status

- 1. Wailua** – up to 288 10,000 sq. ft. lots; Off-site storage tank & on-site roads & water & sewage transmission lines will be needed. Wailua Well #1 capped & cased (see Item G-2 for more info).
- 2. Hanapēpē Homestead** – Phases 2 and 3 master planned; FEA/FONSI approved by HHC in Oct. 2020. 82 lots in Phase 2 in subdivision phase. Phase 3 will require additional potable water supply and wastewater infrastructure.
- 3. Anahola** – Pi'ilani Mai Ke Kai Residential Homestead – Phase 3 underway

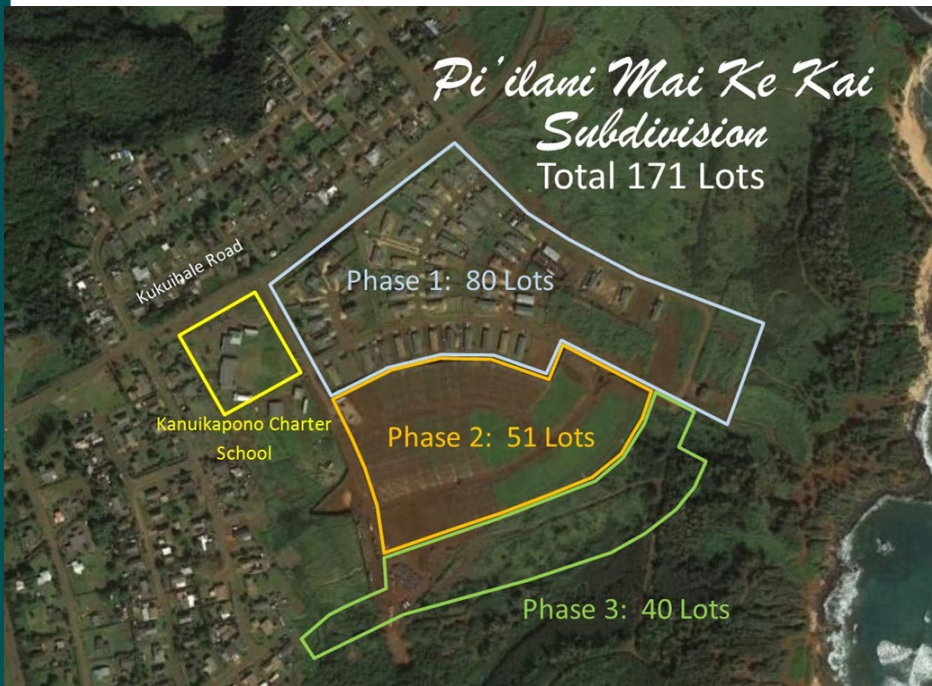
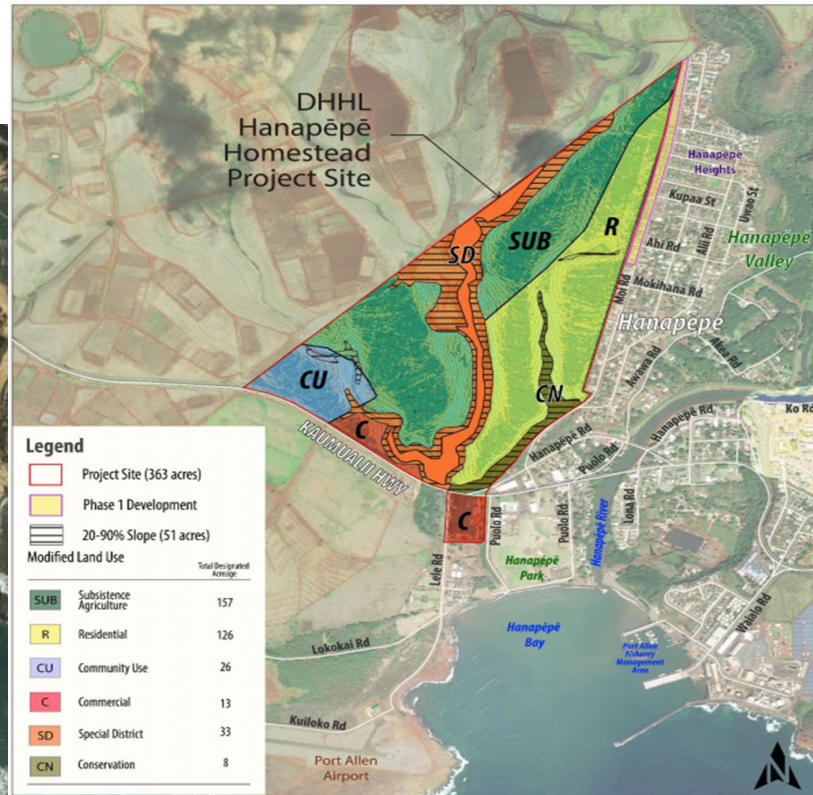
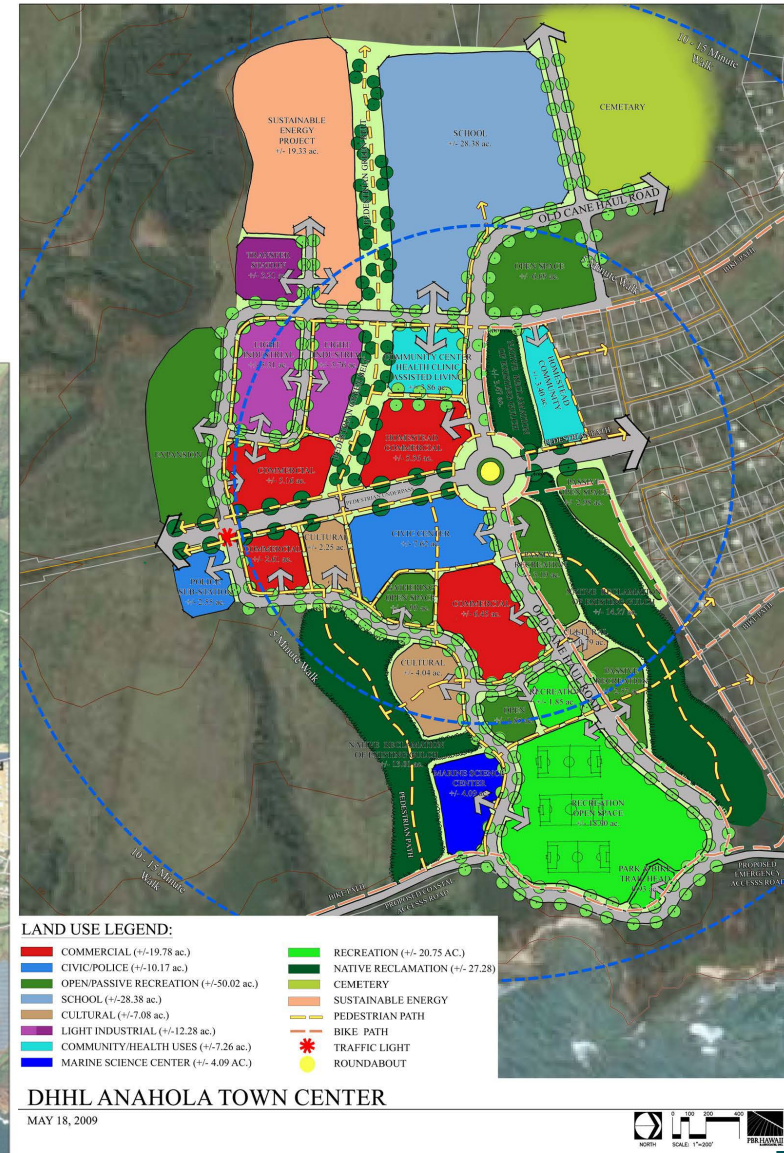
Not in KIP:

- Anahola Kuleana Homestead Lots – Settlement Plan & EA approved by HHC May 2021; 115 homestead lots (14 Pastoral and 101 Subsistence Agriculture) on 432 acres; metes & bounds survey underway. Add'l study of surface water resources done for non-potable ag water.
- Pu'u 'Ōpae Kuleana Homestead Lots -- Settlement Plan & EA approved by HHC July 2020; 251 homestead lots (11 Pastoral and 240 Subsistence Agriculture) on 1,421 ac.



KIP Amendments & Updates

Since the Kaua'i Island Plan (KIP) was adopted in May 2004, the Hawaiian Homes Commission has approved one amendment, a revised Land Use Plan to reflect the Hanapēpē Homestead Community Master Plan. An update to the KIP is due to start in the next two years.





Kaua'i Regional Plans – Implementation

Reg. Plan	Priority Project	Description	Current Status
Wailua (2009)	Cultural Resources Inventory - Malae Heiau Restoration Project, Wailua River State Park	State-owned land to south & west of Malae heiau conveyed to DHHL in 1994. ACTION: Establish procedures, forms, electronic forms & databases necessary to inventory, document, map & catalog cultural resources located on DHHL's Wailua lands.	No change - Project lacks a champion. KIP identifies cultural buffer on DHHL lands along Wailua River by designating lands as Special District, but Wailua Regional Plan shows a different land use configuration. Hold further discussions on how best to protect & manage cultural sites when ready to move development plans in Wailua forward.
Wailua (2009)	Potable Water Sources <i>(Refer to Item G-2, Kaua'i Water Projects & Issues, for more info)</i>	Water Master Plan for proposed DHHL Wailua subdivision completed in January 2009. Source, storage and transmission lines needed to support development. ACTION: Secure funding for design, drilling, casing, outfitting & testing of two new potable well sources. Second well is needed as backup source.	DHHL's Wailua Well #1 is now capped & cased, to be put into production when DHHL decides to move ahead with homestead planning & development. DHHL/DLNR/ State need to secure land in Kālepa Forest Reserve for proposed 330' elev. 0.5 MG tank site.
Wailua (2009)	Kalepa Ridge Surface Water System Maintenance <i>(Refer to Item G-2 for more info)</i>	DHHL identifying opportunities to utilize surface water resource for agricultural uses for proposed Wailua development. Community has expressed interest in creating agricultural lots to feed their families.	Staff coordinating with Agribusiness Development Corporation (ADC) & Commission on Water Resource Management (CWRM) on potential allocation & use of water in Wailua. In 2018, CWRM approved a surface water reservation for DHHL of 0.513 mgd from the Wailua River.
Wailua (2009)	Kapa'a Relief Route	State Department of Transportation's (SDOT) #1 priority on Kaua'i was Kapa'a Relief Route; considered four alternative alignments through or abutting DHHL's Wailua lands.	No discussion as of late. Staff will continue to coordinate and hold discussions with County of Kaua'i & DOT on road alignment and highway safety alternatives for the area.
Wailua (2009)	Wailua Wastewater Treatment Plant (WWTP) Facility	Wailua WWTP requires expansion & potential relocation due to recent growth in area & as a function of longterm wastewater treatment capacity needs for Wailua-Kapa'a area.	Staff continue to coordinate with County of Kaua'i on potential relocation & expansion of WWTP.



Kaua'i Regional Plans – Implementation

Regional Plan	Priority Project	Description	Current Status
Anahola (2010)	Ke Aloha O Ko Kakou 'Āina -- Anahola Town Center Plan (ATCP)	Create a gathering place with recreational, educational, business, health & civic service opportunities, including a cemetery/final resting place for iwi kupuna.	Commercial kitchen constructed. Cemetery/ secure resting place for iwi kupuna not yet implemented. ATCP & implementation strategy need to be revisited – not identified as a Priority Project during Update.
Anahola (2010)	Anahola Clubhouse & Park Improvements	Improvements needed to ensure safety & continued use of resources: <ul style="list-style-type: none"> – Motion sensor lights – General building improvements – upgrades to existing kitchen, restrooms & computer room – Improved maintenance of playground & basketball courts – Expansion of baseball field to support little league tournaments 	In 2018-19, County of Kaua'i completed various projects that included: <ul style="list-style-type: none"> - Basketball court renovation. - Parking lot paving & striping. - Playground renovation. - Construction of ADA walkways that connect Clubhouse with baseball & basketball amenities. - Baseball field improvements. <p>Additional projects are on hold due to budget constraints.</p>
Anahola (2010)	Secure & Manage Surface Water Resources (non-potable) (Refer to Item G-2, Kaua'i Water Projects & Issues, for more info)	USGS study conducted on Anahola Stream looked at availability of surface water resources. Assessed reservoirs, made recommendations for remediation, removal, & deregulation. Action: construction work to be conducted.	Funding was obtained. Construction has been initiated. In response to beneficiary feedback during the Anahola Kuleana Homestead Settlement Plan process, surface water resources were re-evaluated and a study and recommendations prepared.
Anahola (2010)	Support Kanuikapono 21st Century Ahupua'a Place Based Labs	Kanuikapono is a charter school in Anahola which integrates resource management of natural & cultural resources within ahupua'a. Actions: new Learning Resource Center, establishment of mobile educational place based learning labs throughout Anahola.	Funding needed for construction. Project has been revisited during the Anahola Regional Plan Update and may be implemented via partnerships with other homestead community organizations.
Anahola (2010)	Improve Road & Traffic Circulation to Kūhiō Highway	Increase direct access to Kūhiō Highway. Town Center Plan reflected need for access to highway & connectivity within existing community. ACTIONS: roadway circulation hierarchy & connectivity study; redesignation of segment of Kūhiō Highway to allow slower speeds & greater access.	Discussions with State Department of Transportation-Highways and County of Kaua'i are ongoing. SDOT-Highways is making highway safety improvements in Anahola in 2022, including rumble strips and restriping.



Kaua'i Regional Plans – Implementation

Regional Plan	Priority Project	Description	Current Status
W. Kaua'i (2011)	Develop Agricultural & Water Plan (Pu'u 'Ōpae) (Refer to Item No. G-3, Kauai Water Issues Update, for more info)	Three-part project to integrate ag uses and water availability via: 1) Land exchange of mauka hunting lands for DLNR lands at a lower elevation that are better suited for homesteading; 2) Restoration of Pu'u 'Ōpae Reservoir & irrigation system; agricultural lease master plan; evaluation of increasing water diversion from Pu'u Moe Divide; diversified ag projects; 3) maintenance/ improvement & continued use of existing West Kaua'i Water System.	HHC issued Kekaha Hawaiian Homestead Association (KKHA) a 20-year license for 231 acres of land at Pu'u 'Ōpae to implement Phase I of their Farm & Irrigation Plan (FIP). Kuleana Homestead Lot Settlement Plan and FEA/FONSI completed in August 2020 for 1,192 acres of Waimea lands; coordinates planning, design, & implementation of land uses & homestead lot development around & adjacent to Pu'u 'Ōpae. Coordination w/KIUC on WKEP & infrastructure improvements is ongoing.
W. Kaua'i (2011)	Develop a Multi-purpose Evacuation & Education Center/ Shelter	This multi-purpose facility would serve as a culture & education center when not used as a disaster shelter.	Need for Community Resilience Plan identified. Planning Office participated in County of Kaua'i's West Kaua'i Community Plan update & Community Vulnerability Assessment. Proposed site is in "Mauka Village" area off Koke'e Rd. Changes to original project will require add'l Beneficiary Consultation or W. Kaua'i Regional Plan Update.
W. Kaua'i (2011)	Support Development of the Kekaha Enterprise Center	Kauai Community College & Council for Native Hawaiian Advancement developed a 2,000 square foot single story facility on 2.629 acres used to provide social & community services to beneficiaries living in Kekaha.	COMPLETED. Facility managed by the West Kaua'i Hawaiian Homestead Association (WKHHA).
W. Kaua'i (2011)	Develop Renewable Energy Projects Compatible with Agriculture	Community indicated a willingness to support renewable energy projects that meet goal of compatibility with agriculture.	DHHL is partnering with KIUC Energy Cooperative to develop a pumped hydroelectric project on its Waimea lands. Project will increase reliability of non-potable water & improve road access to Pu'u 'Ōpae for ag, pastoral, community & kuleana settlement uses.
W. Kaua'i (2011)	Develop Agricultural Uses for Hanapēpē Farm Lots/Lease Areas	Existing residential lots in Hanapēpē are too narrow & feel crowded. Residents have expressed a desire to use area behind their lots for agricultural, recreational or open space uses.	Hanapēpē Homestead Community Master Plan & Environmental Assessment ("Phase 2") for 349 acres of lands adjacent to existing Hanapepe Residential Homesteads ("Phase 1") approved by HHC Oct. 2020. Includes subsistence agricultural uses. Design for Phase 2 (82 residential lots), relocating drainage & enlarging Phase 1 lots underway.

Anahola Regional Plan Update - Status



HAWAIIAN HOME LANDS
HAWAIIAN HOMES COMMISSION
DEPARTMENT OF HAWAIIAN HOME LANDS

SSFM
International



BENEFICIARY CONSULTATION

Four Community Meetings at Anahola Clubhouse have been held to date:

1. December 2021: Project Introduction, Vision & Values
2. February 2022: Issues & Opportunities, Initial Project Ideas
3. May 2022: Refine Project List
4. June 2022: Confirm Priority Projects & Implementation Steps





Regional Values & Vision

Draft Vision Statement

“Anahola is a thriving Hawaiian community that cares for our land, ocean, and natural resources from mauka to makai. We come together to heal our differences and work toward a sustainable future, drawing wisdom from Hawaiian knowledge and traditions while incorporating the tools and technologies of today.”

UPDATED Draft Regional Values



Support & Care for Our Kūpuna



Uplift and Empower Our Youth



Community Education & Capacity Building



Sustainable and Resilient Aloha 'Āina Economy



Community Support & Collective Action



Trust & Transparency



PRIORITY PROJECTS (PRELIMINARY)

- 1. Secure & Manage Surface Water Resources:** Investigate water resources mauka and explore watershed development and stream flow restoration projects to secure homestead water rights.
- 2. Anahola Home Building Resource Center:** Develop a home building resource center in conjunction with Hō'ākeolapono Trades Academy and Institute that brings together education, building materials, equipment, and skilled labor resources to provide affordable home building, repair, and maintenance to the Anahola community.
- 3. Support Place-Based Education Partnerships:** Support the development of learning spaces for Hawaiian cultural, place-based learning for Anahola youth and families.

*** Note: The preliminary project names and descriptions and are subject to change ***



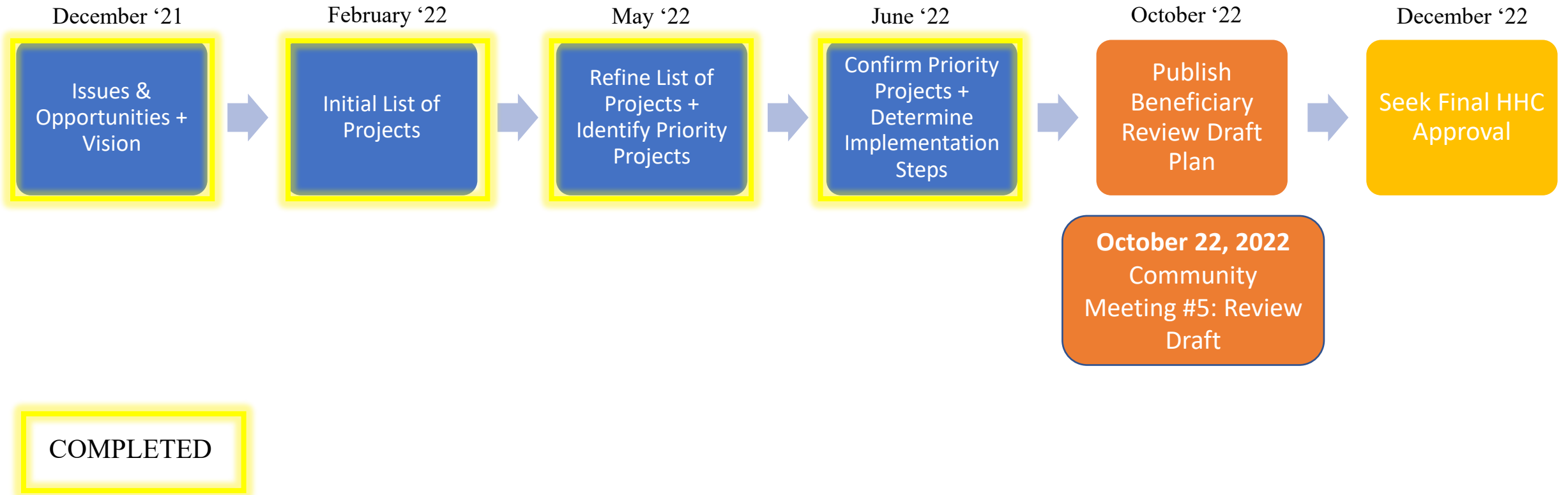
PRIORITY PROJECTS (PRELIMINARY) cont.

- 3. Shoreline/Makai Management Plan:** Develop a plan to manage shoreline resources and access to DHHL's lands makai of Kūhiō Highway using community stewardship through volunteer committees, controlled access points, safety and security monitoring, road and trail maintenance, pollution and waste management, marine resource management, native or agricultural plant restoration, recreational activity location enhancements, place-based learning activity zones, workforce development programs, Native Hawaiian cultural practice opportunities, promoting self-sufficiency and cultivation, short-term camp site permitting, strategic partnerships, and fundraising events.
- 4. Implement the Mauka Kuleana Settlement Plan:** Work with DHHL and partners to ensure housing and infrastructure alternatives are available to future Kuleana lot lessees.

*** Note: The preliminary project names and descriptions and are subject to change ***



PROJECT SCHEDULE & NEXT STEPS





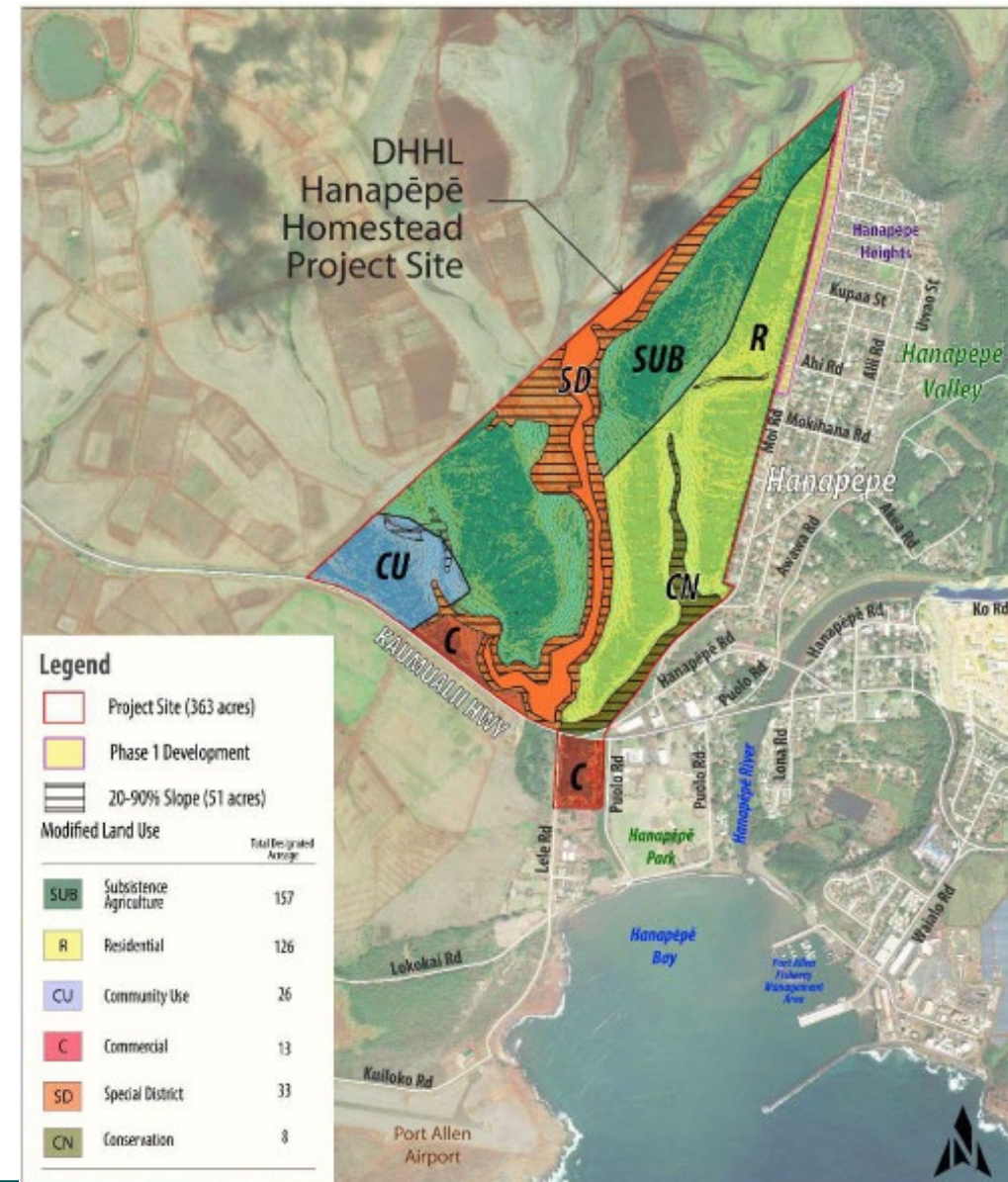
Kaua'i Homestead Development Planning Projects

Hanapēpē Homestead Master Plan & EA

- Approved by the HHC in October of 2020
- Kaua'i Island Plan also amended to reflect land use modifications
- Phase 2 (82 lots) in subdivision stage of implementation

At buildout, homestead will include:

- 111 Subsistence Ag Lots, 1-3 acres
- 449 Residential Lots (7,500 sq. ft.)
- 13 acres Commercial use
- 26 acres Community Use
- 33 acres Special District
- 8 acres Conservation





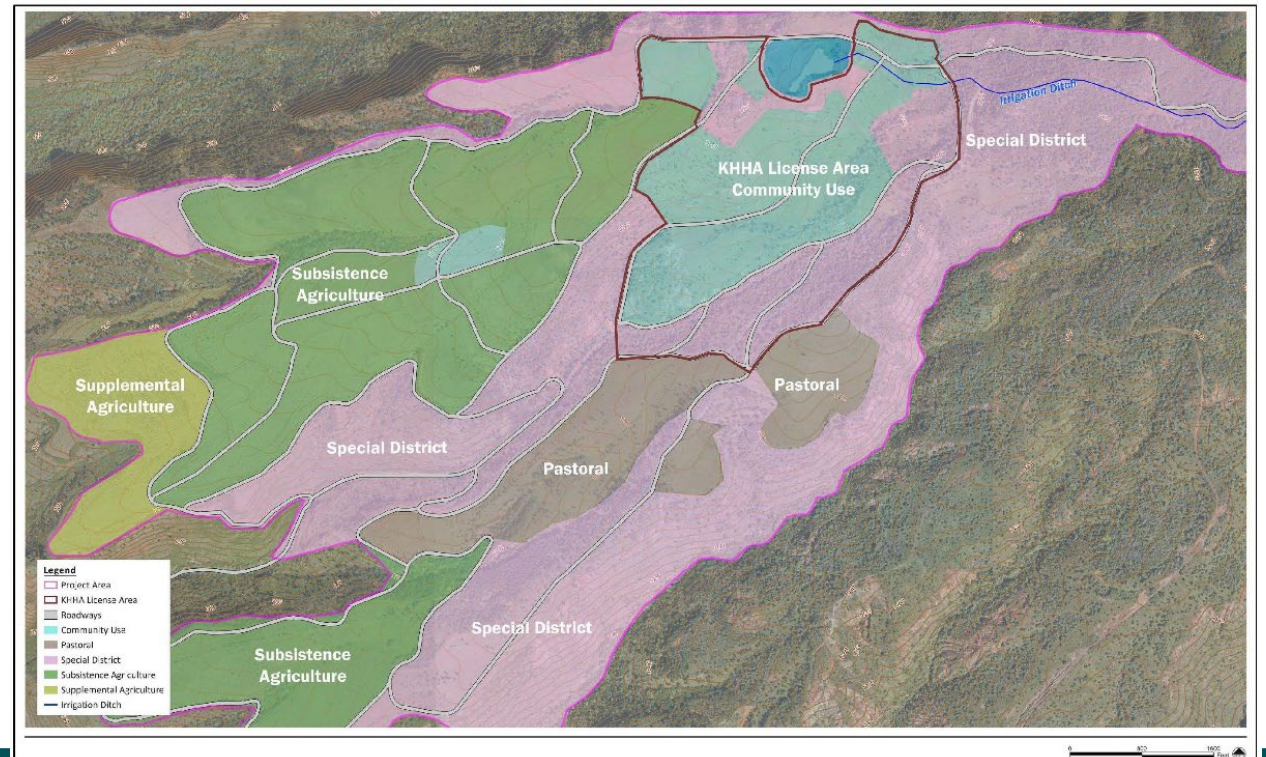
Kaua'i Homestead Development Planning Projects

Pu'u 'Ōpae Special Area Plan & Kuleana Homestead Settlement Plan

- Approved by the HHC in July of 2020; EA process completed
- Farm and Irrigation Plan (FIP) completed by Kekaha Hawaiian Homestead Association (KHHA), 20-year license issued by HHC in 2017
- KIUC issued a 65-year lease to develop West Kaua'i Energy Project; will include road improvements, provision of potable water and electricity

At buildout, homestead will include:

- 240 Subsistence Ag Lots (0.5 acres)
- 11 Pastoral Lots (10 acres)
- 63 acres Supplemental Ag
- 302 acres Community Use
- 702 acres Special District





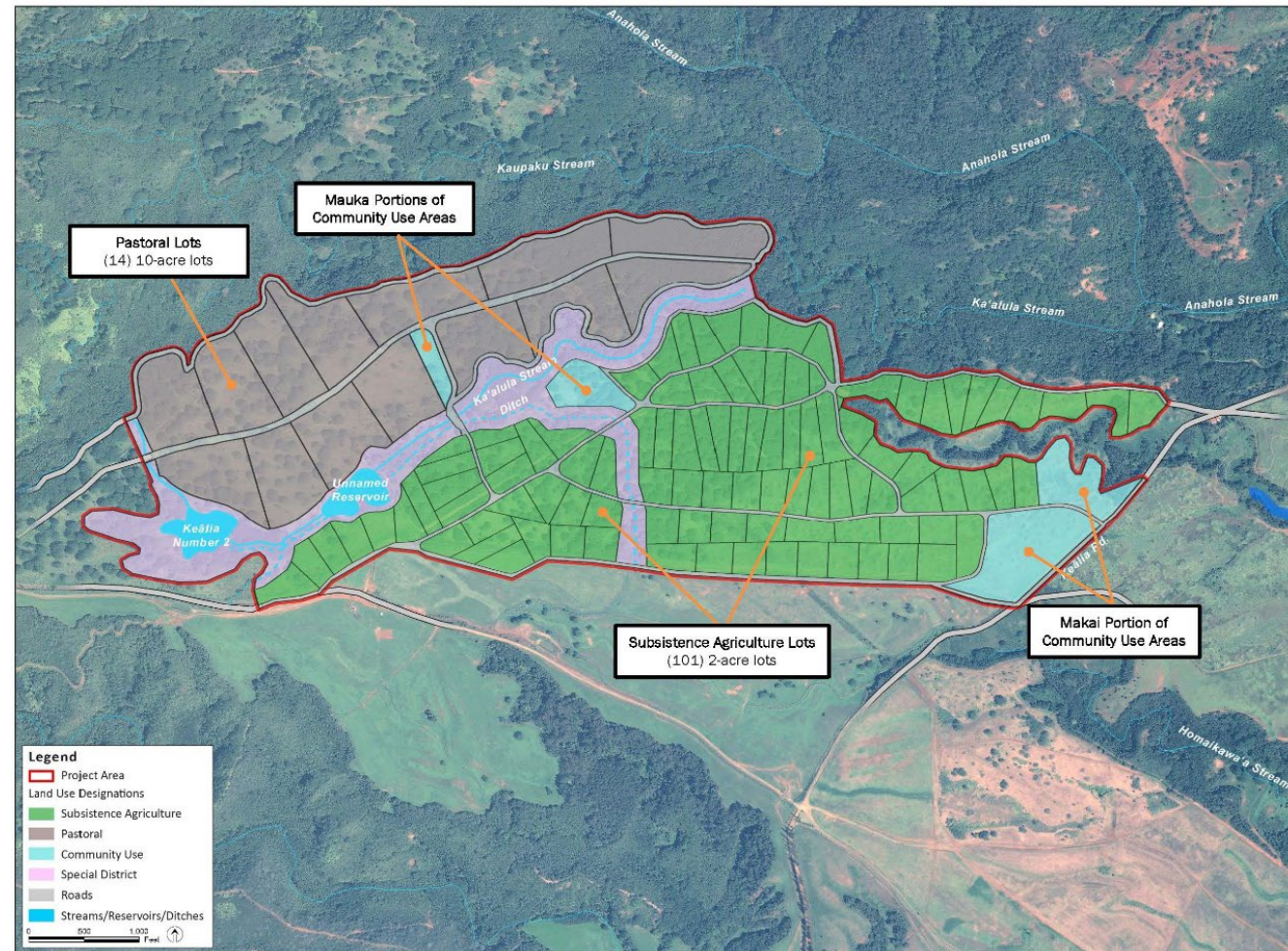
Kaua'i Homestead Development Planning Projects

Anahola Kuleana Homestead Settlement Plan

- Approved by the HHC in May of 2021;
EA process completed
- Albizia clearing and road improvements were completed by Green Energy Team, which will facilitate implementation

At buildout, homestead will include:

- 101 Subsistence Ag Lots (2 acres)
- 14 Pastoral Lots (10 acres)
- 28 acres Community Use





Mahalo



DEPARTMENT OF HAWAIIAN HOME LANDS

www.dhhl.hawaii.gov