



HAWAIIAN HOME LANDS

HAWAIIAN HOMES COMMISSION · DEPARTMENT OF HAWAIIAN HOME LANDS

BENEFICIARY INFORMATION MEETING #1

Land Use Designation Evaluation for
Parcel at Yorktown & Enterprise
in Kalaeloa

August 23, 2022

6:30 p.m. to 8:30 p.m.



Zoom Best Practices

Please:

Keep your camera on and microphone mute.
Questions during the presentation please type in “Chat”

During the discussion:

Use the “raise hand” function to be called on,
Just ask (politely) if we miss your virtual hand
Use the Chat to enter questions or comments
Please be respectful of others

Mahalo!



Aloha!

**Please register your attendance by “signing-in”
on in the chat box:**

- 1. Your preferred name,**
- 2. Where you are Zooming in from,**
- 3. Whether you are a DHHL beneficiary, and**
- 4. Why you decided to join us this evening.**

Mahalo!

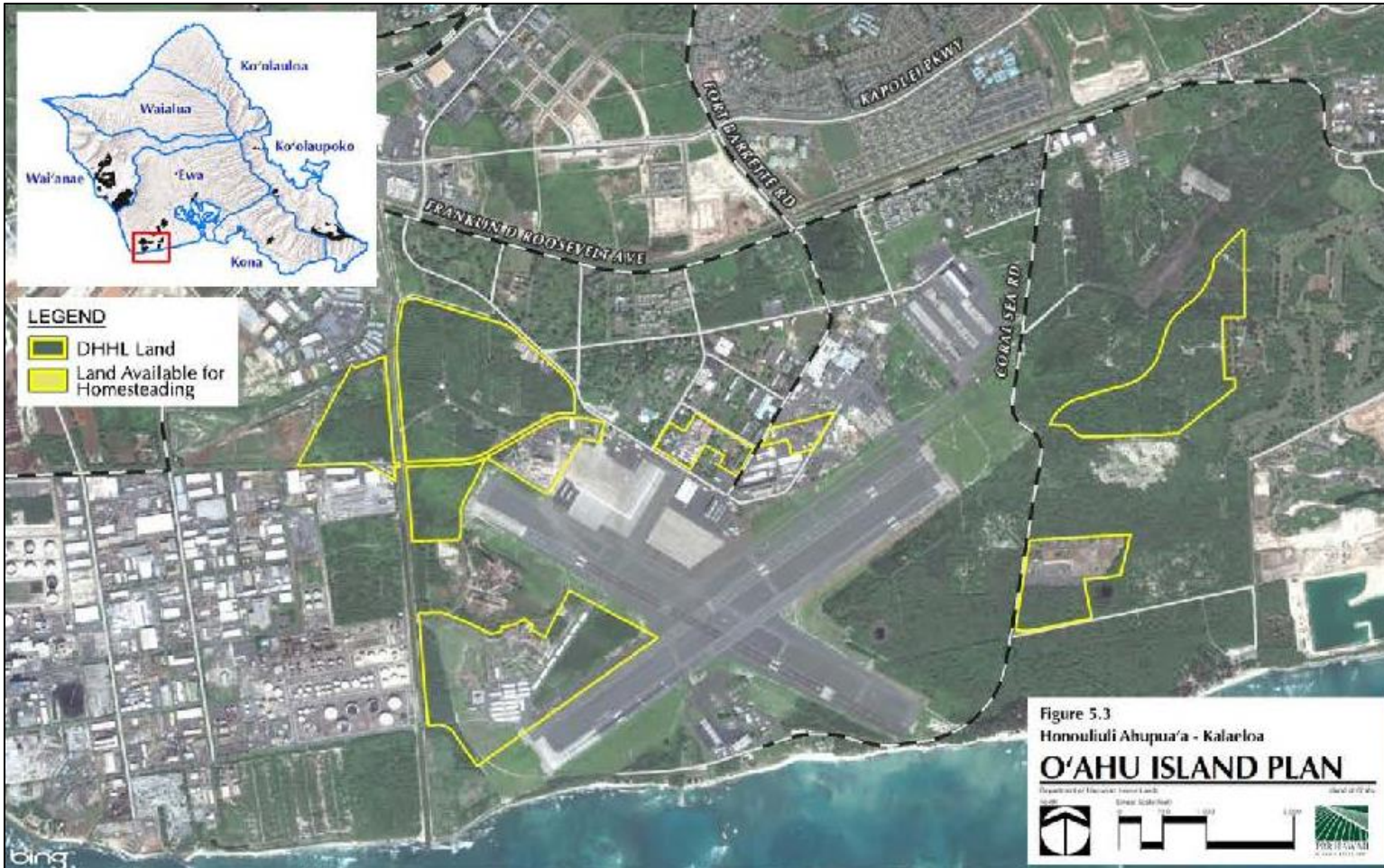


Purpose of Tonight's Informational Meeting

1. DHHL's Kalaeloā landholdings
2. Overview of Proposed Project
3. Explanation of need to evaluate land use
4. Actions Taken
5. Next Steps
6. Comments, Questions



DHHL Lands in Kalaheo



- 9 Parcels
- 555 acres
- All lands designated “Industrial”



DHHL Lands in Kalaheo – Parcel Location



Located on

- TMK: (1) 9-1-013:024
- approximately 20 acres



DHHL Lands in Kalaeloa – Project Location



- Project Boundaries (turquoise outline)
- ~ 1.6 acres
- Site Includes
 - Existing building
 - 2-story
 - 20-studio unit
 - Parking lot



DHHL Lands in Kalaeloa – Current Use



Figure 3. Oblique view of 1071

- 2- Right of Entry tenants
 - 3 units
 - Office and Storage
 - Revenue Generated- \$13,000 per year



Figure 2. Oblique view of 1071 Yorktown St. View facing north

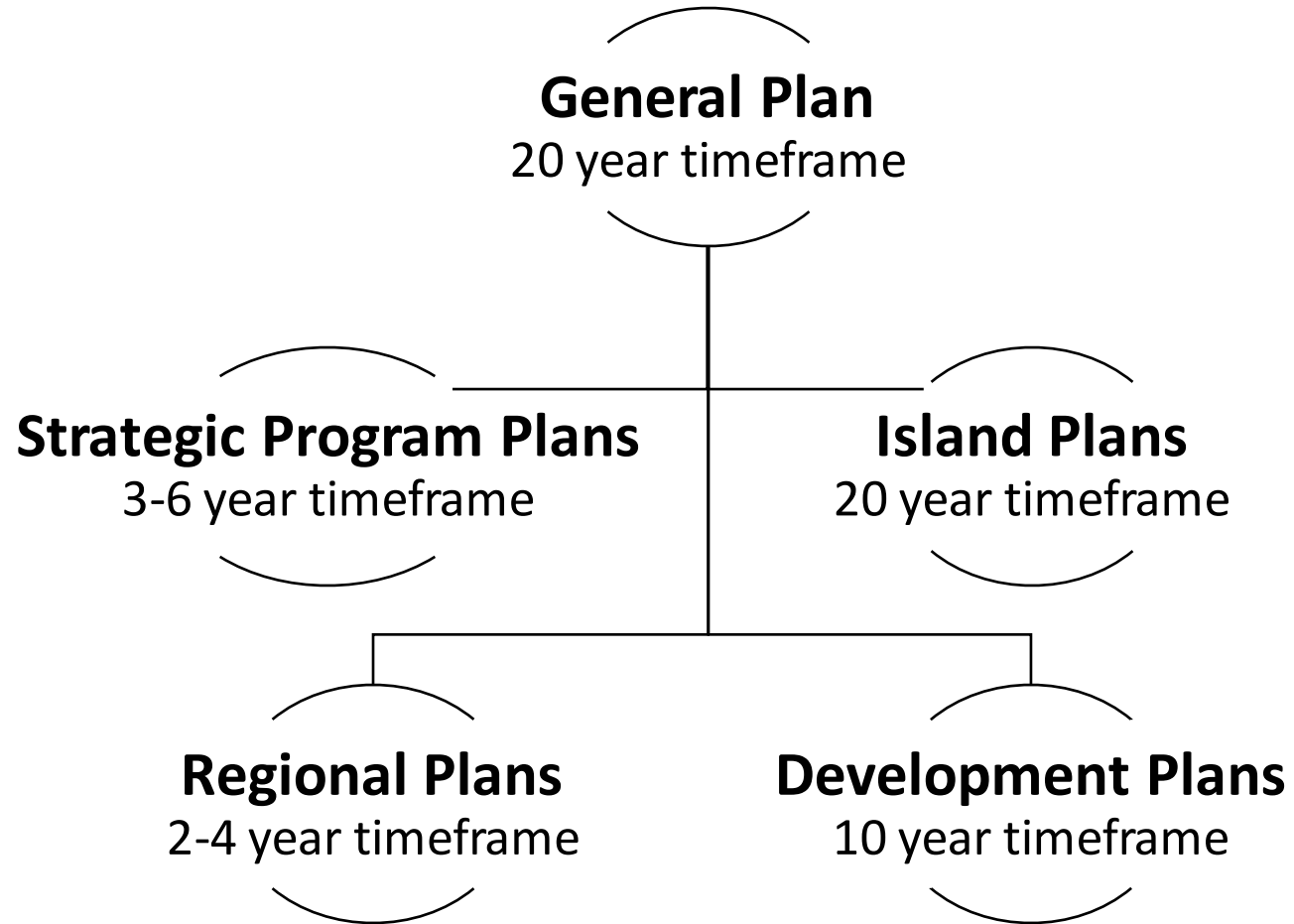


Proposed Project

- Provide transitional housing for up to 18 native Hawaiians on DHHL's O'ahu applicant list
- Renovate existing structure for modern day use
 - Replace water and electrical systems
 - Remove former boiler tank
 - Repair parking lot
 - Install photovoltaic system
 - Renovate 20 studio units for transitional housing and support services



Planning Process





Planning Process- Land Use Changes

- **Current Land Use- Industrial-** (processing, construction, manufacturing, transportation, wholesale, warehousing, and other industrial activities)
- **2002 General Plan- Land Uses**
 - **Homesteading Uses-** Residential, Subsistence Agriculture, Supplemental Agriculture and Pastoral.
 - **Other Land Uses-** General Agriculture, Special District, Community Use, Conservation, Commercial and Industrial



Planning Process- Land Use Changes

2022 General Plan Update- Proposed Land Uses

Homesteading Uses-

- Existing: Residential, Subsistence Agriculture, Supplemental Agriculture and Pastoral.
- New: DHHL Kuleana: raw land, no infrastructure

Other Land Uses-

- Existing: General Agriculture, Special District, Community Use, Conservation, Commercial and Industrial
- New: Stewardship, Community Agriculture, Renewable Energy



Actions already Taken to Support Project

1. Chapter 343- March 2021
2. Phase I Environmental Site Assessment- March 2021
3. Consultation with NHO and Stakeholders recommended by State Historic Preservation Officer (SHPO)- February 2021 through July 2021
4. SHPO concurrence with “no historic properties affected” for archaeological resources
5. Reconnaissance Level Survey (for architecture)- May 2022
6. Informational Briefing to Hawaiian Homes Commission- August 2022



Actions Still Needed

1. SHPO concurrence with DHHL determination, no historic properties affected for architecture
2. Completion of NEPA Environmental Record Review
3. Beneficiary Consultation to identify compatible land Use Designation- **NOVEMBER 2022**
4. Select contractor through Request for Proposals procurement process – early 2023



Questions



Contact

Entitlements Process

Malia Cox

NAHASDA Compliance Specialist

Malia.m.cox@hawaii.gov

Transitional Housing Program

Cynthia Rezentes

NAHASDA Program Specialist

cynthia.rezentes@hawaii.gov



Sharing your Mana'o

- 1 Use the **CHAT BOX** to ask a question or make a comment. It will be read out loud by the Facilitator.
- 2 **RAISE YOUR HAND** if you want to speak. When it's your turn, unmute your microphone.
- 3 If you're not speaking, mute your microphone.

USER CONTROLS



1

2

3

**Comment
in Chat**

**Raise Hand
to speak**

**Mute
Mic**