



HAWAIIAN HOME LANDS

HAWAIIAN HOMES COMMISSION · DEPARTMENT OF HAWAIIAN HOME LANDS

# **Revocable Permit Pilot Program, Status Update Agenda Item No. F-6 – For Information Only**

**August 16, 2022**



# Revocable Permit Pilot Program

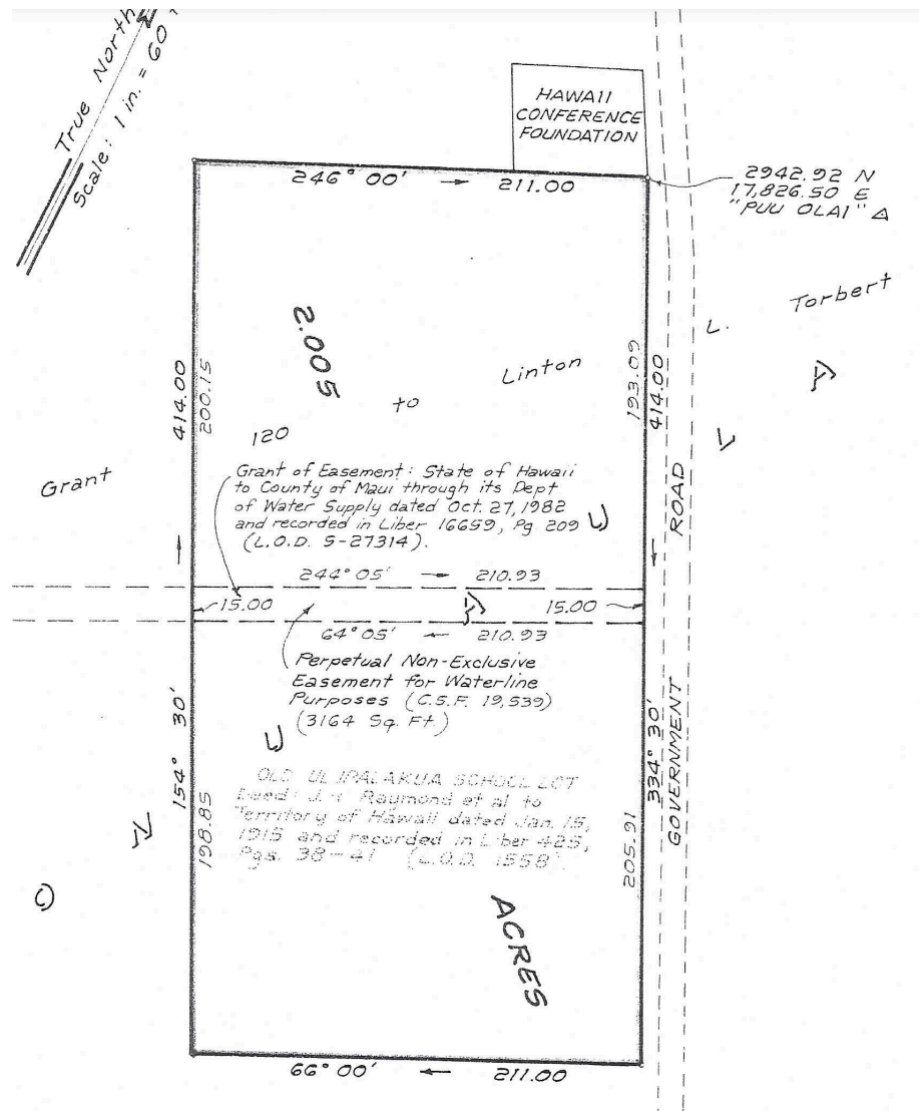
- Commission adopted the Revocable Permit Pilot Program in 2021
- Goals include:
  - Identify a process through which to connect responsible permit holders together with parcels in need of land management
  - Create outreach tools and resources to support beneficiaries and beneficiary-owned businesses in applying to manage identified parcels
- Current Status:
  - Minimum qualifications and selection criteria adopted by the Commission
  - Identified 3 potential parcels for outreach during September 2022 under the Revocable Permit Pilot for applications due October 15, 2022
  - Partnering with a community planning organization to support the Pilot rollout over the next 3 months, including required documents and outreach
  - Anticipating reporting and recommendations, including approval of RPs, back to the Commission in December 2022



# Partner Kuleana

- Create Application and instructions documents for interested entities
- Create outreach information and tools, including hosting 5+ community events to provide information to potential entities
- Develop a database of beneficiary-owned businesses for future outreach
- Provide support to qualified entities in the pilot application process
- Provide recommendations to the department regarding the pilot process, lessons learned, and future applications
- Make recommendations to the department regarding rent determination methodologies

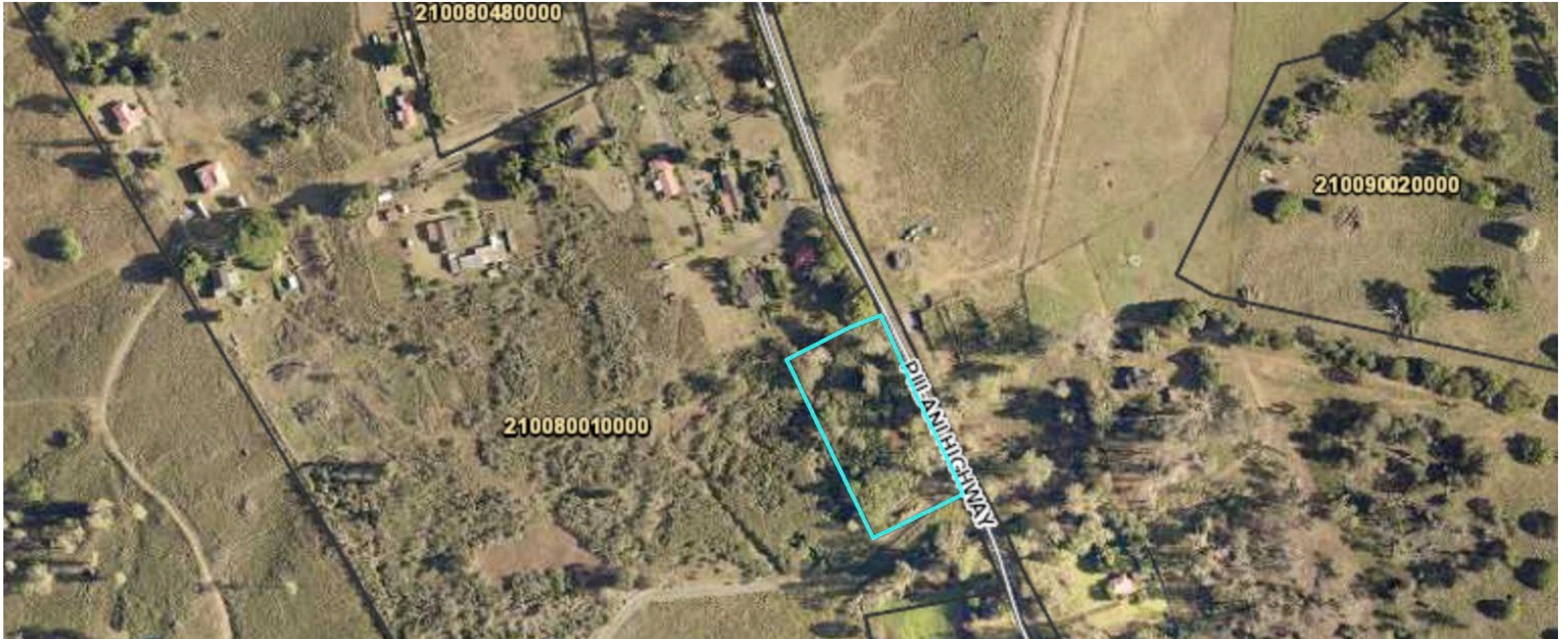
# Proposed Community Parcel: Kahikinui



- TMK: (2) 2-1-008:050
- 2.005 acres fenced with gate and water meter with a spigot
- Potential conditions:
  - Minimum rent \$20 per month
  - Ensure residents of Kahikinui have access to potable water
  - Caretaker responsible for ground maintenance, fence repair, and appropriate time for access

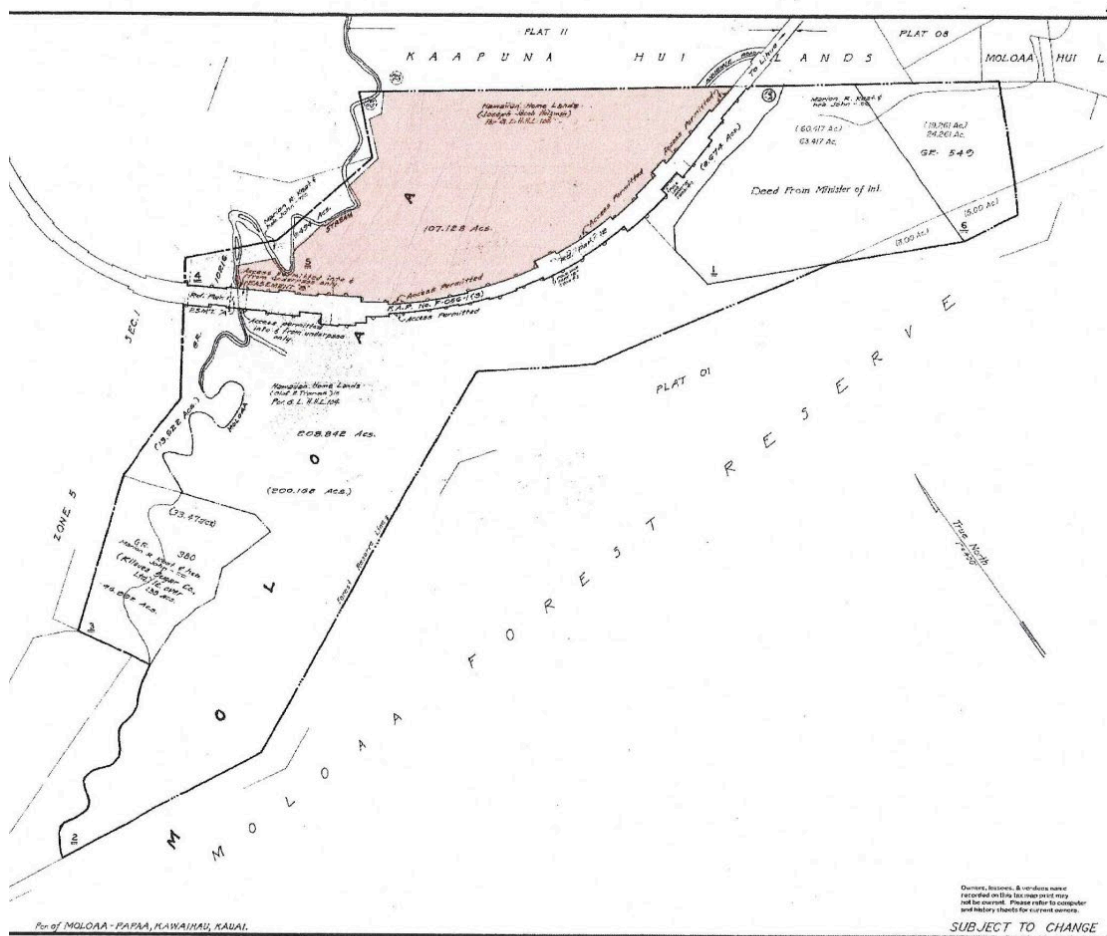


# Proposed Community Parcel: Kahikinui





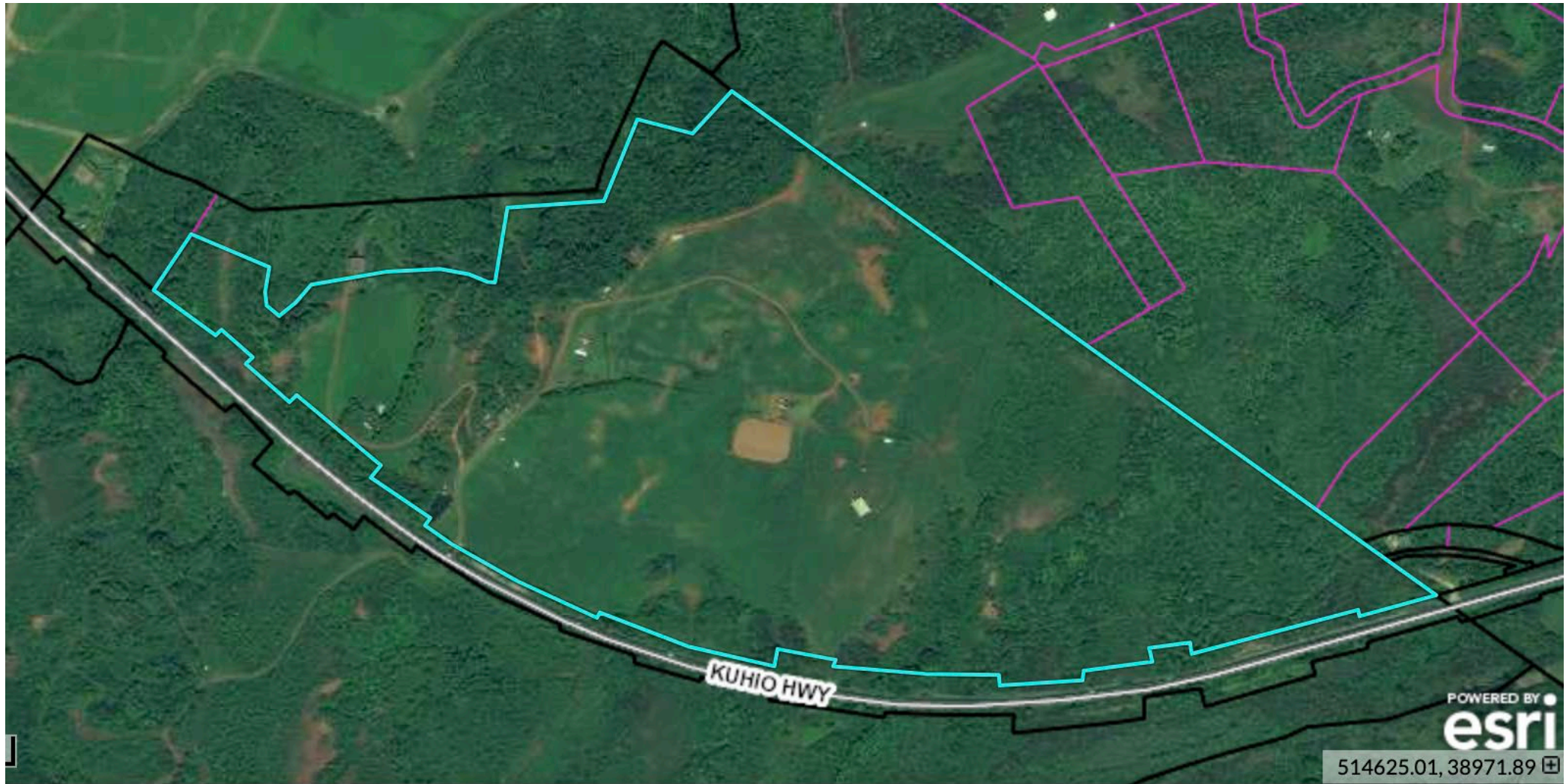
# Proposed General Parcel: Moloa'a, Kaua'i



- TMK: (4) 4-9-10:005
- 107.12 acres, fenced with access easement
- Potential conditions:
  - \$482/month (based upon 1982 policy for minimum rent of \$54/annum)
  - Used for pastoral grazing of livestock, as permitted by County of Kaua'i zoning code
  - No residential use, including overnight camping

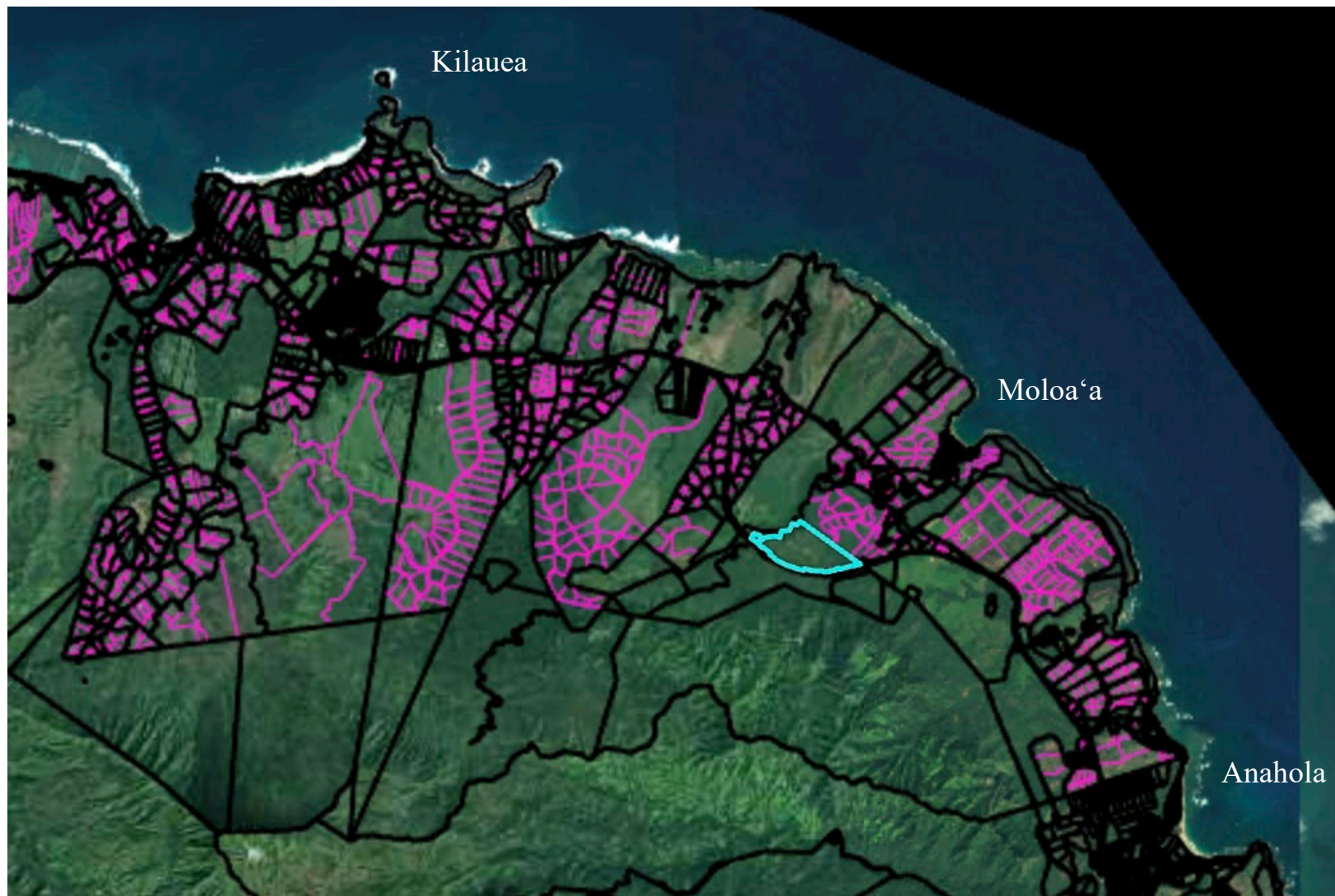


# Proposed General Parcel: Moloa'a, Kaua'i



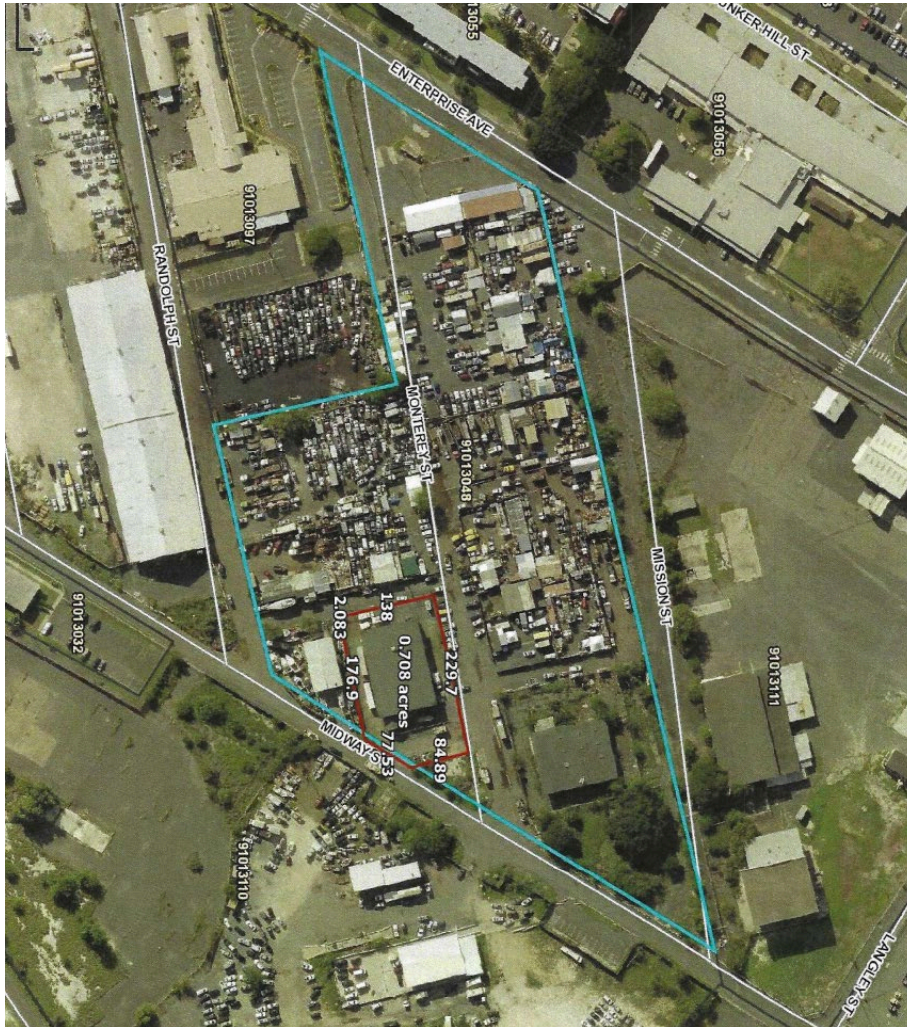


# Proposed General Parcel: Moloa'a, Kaua'i





# Proposed Industrial Parcel: Kalaeloa



- TMK: (1) 9-1-013:048 (por)
- Approx. 28,440 sq ft inclusive of Building 283, fenced
- Utilities are in roadway and extended to the property, relatively level with slight slope
- Potential conditions:
  - Monthly rent 8% of the county tax assess valuation with 50% discount due to temporary use status
  - Utility usage reimbursed to DHHL
  - No residential use, including overnight camping



# Outreach Process

- Information posting in Ka Nuhou
- Share information posting with relevant partner organizations
- Minimum of 5 events to share parcel and process information with potential businesses that fit within the goals of the program
- Engagement through homestead associations
- Partnership through organizations with Native Hawaiian-owned business members and beneficiaries
- Applications due October 15



# Mahalo



DEPARTMENT OF HAWAIIAN HOME LANDS

[www.dhhl.hawaii.gov](http://www.dhhl.hawaii.gov)