



**DHHL Anahola Regional Plan Update  
Community Meeting #2 Summary  
February 24, 2022  
Anahola Clubhouse**

## Attendance

**Beneficiaries:** 36 signed in

Beneficiary	Name
Both	N. Lagmay
Lessee	Lawai'a Naihe
Both	Dennis Neves
Both	Kuulei Punua
Applicant	Rachelle Nam
No Response	Aggie Marti-Kini
No Response	Josephine Bonaparte
Both	Benny Lagmay
Applicant	Edward Taniguchi
No Response	Faith Burgess
Both	Keoni Mahelona
Both	Henry Kupihea
Other	Delta-Dawn Taniguchi
Lessee	Jeremie Makepa
Other	Marie Makepa
Both	Kawika Cutcher
Applicant	Luella Lemn
Applicant	Amber Rivera
Applicant	Dale Lono
Other	Lana Lono
Both	John Kaohelaulii
No Response	Mahi'ai Naihe
No Response	Gloria Rafael
Other	Sam Makepa
Both	Jason Kaleiohi
Both	Kimberly Achuara
Both	Charles Naihe
No Response	Abe Mekanui
Lessee	Melissa Moody
Other	Derek Green
Lessee	Kai Lovell
Other	Bronson Lovell

## Project Team:

- **SSFM:** Melissa May, Jared Chang, Malachi Krishok
- **DHHL:** Nancy McPherson, Andrew Choy, Erna Kamibayashi, Rhonda Gadingan, Kaipo Duncan



DEPARTMENT OF HAWAIIAN HOME LANDS



### **Other Guests:**

- **Hawaiian Homes Commission:** Commissioner Dennis Neves (lessee in Bayview)

### **Handouts:**

- Project Fact Sheet
- 2010 Regional Plan

## **Agenda**

1. Sign-in & Open House
2. Welcome & Introductions
3. Group Presentation
  - a. Community Meeting #1 Recap
  - b. 2010 Priority Project Updates
  - c. Updates on Other Projects in the Region
  - d. Draft Regional Values & Vision Statement
4. Breakout Group Discussions
  - a. Regional Values & Vision Statement
  - b. Issues & Opportunities
  - c. Project Ideas

## **Summary Notes**

### **7. Open House**

An open house area was set-up in the indoor clubhouse space for meeting attendees to peruse prior to the start of the group meeting. The open house included posters that covered the following information:

- DHHL Anahola Regional Plan Purpose and Process
- 2010 Anahola Regional Plan Priority Projects and Current Status
- Draft Regional Values & Vision Statement
- Draft Issues & Opportunities
- Regional Map showing 2010 Priority Projects and Current Land Use Requests

The posters are attached to this summary in Appendix A.

### **8. Opening Presentation**

Kaua'i District Supervisor, Erna Kamibayashi, opened the group meeting with a pule and DHHL Planning Office Manager, Andrew Choy, gave welcoming remarks. Jared Chang began the PowerPoint presentation reviewing the purpose of DHHL Regional Plans, what the Anahola Regional Plan update will include, and sharing the beneficiary consultation schedule moving ahead. He then summarized the list of information beneficiaries requested during the first community meeting which was held in December 2021.



Following Jared, Nancy McPherson presented slides covering the five 2010 Regional Plan Priority Projects and updates on their current status. She also presented additional information in response to requests made during the first meeting related to: Pi'ilani Mai Ke Kai Subdivision lot development, the Anahola Kuleana Settlement Plan, other project proposals and land requests on DHHL lands in the region and a summary of vacant homestead lots in the area.

To finish the PowerPoint presentation, Malachi Krishok presented the first draft list of regional values and vision statement, which led into the first topic of the breakout group discussions.

## 9. Breakout Group Discussion Notes

### Group 1

#### *Regional Values & Vision Statement*

- Kūpuna Council
- Would like education included in the values
  - Education is needed in order make our vision and these projects happen
  - Education is the foundation
  - Computer education is needed – used to the have a community center in Anahola, which provided access to and training
- Term “self” in “self-sufficiency” should not be in reference to individuals but the whole community – the vision should be for the whole community
  - Change “self-sufficiency” to “sustainability”
- Water needs to be part of the vision – without water, none of this is possible
  - If the main water tank goes down, there is no back-up system to get water to the homesteads that rely on that water
  - Water = sustainability
  - The water doesn't flow right now – water management is needed for the future.
- Water access affects agriculture – a second water tank will open up almost 200 acres for agriculture
  - Concern farm lots are not being farmed
  - Need plan & funding to get ag lots farming
- Aloha our 'āina and kai – these values need to be re-instilled
  - Respect other people's property
  - No dumping
  - No brown water
- Would like to see the ahupua'a system reflected in the vision statement
- Seeing there is a problem unifying the community
  - Anahola Village area is an area where not everyone lives on Hawaiian Home Lands
  - Some people feel that those who live on fee simple lots are living on stolen land
  - Goes back to the history of 999-year homestead leases given out before the Hawaiian Homes Commission Act



- There are 13 lots in Anahola Village that are Hawaiian Home Lands – which means they were not purchased from the original 999-year homestead lease from DLNR
- How we define “community” and “Anahola” needs work in the vision statement

### *Issues & Opportunities*

ISSUES	OPPORTUNITIES
<ul style="list-style-type: none"> <li>• Lessees not able to get qualified for home loans               <ul style="list-style-type: none"> <li>○ Income limits to qualify for assistance</li> </ul> </li> <li>• Outdated DHHL rules and regulations</li> <li>• Upgrading wastewater treatment is expensive</li> <li>• State ag land rules about dwellings are not aligned with Hawaiian ways of living</li> <li>• Blood quantum requirement is a hurdle for future generations</li> <li>• Genetic testing should not be required – make it optional               <ul style="list-style-type: none"> <li>○ The science behind it is dependent on data the service has accumulated</li> <li>○ Māori in Aotearoa never talk about blood quantum</li> </ul> </li> <li>• Ocean access is blocked – some areas are blocked by residences</li> <li>• Need to build trust to move forward</li> <li>• Kumu Camp not been benefitting homesteaders/the community (e.g., there is not a discounted rate for Hawaiians to rent out for family reunions, etc.)</li> <li>• Anahola Marketplace commercial kitchen is not available to benefit homesteaders/the community</li> </ul>	<ul style="list-style-type: none"> <li>• Community can build own homes</li> <li>• Affordable housing alternatives like tiny homes</li> <li>• Allow more creative ways for people to live               <ul style="list-style-type: none"> <li>○ Acknowledge that people are already living on vacant lands and being creative</li> </ul> </li> <li>• Update rules and guidance for off-grid infrastructure and alternative wastewater systems on homesteads, e.g.:               <ul style="list-style-type: none"> <li>○ solar water pumps</li> <li>○ composting toilets</li> </ul> </li> <li>• Tiny home building class offered at Kauaʻi Community College – hands on education brings the community together.</li> <li>• Building a trades academy for high schoolers</li> <li>• Transparent process for gaining access to the coastline (e.g., establishing walking paths)</li> <li>• Community building events that bring people and families together (e.g., movie nights)</li> <li>• Kumu Camp was successful in cleaning up an area that was infested with trash, drugs, etc.</li> <li>• Transparent information about how the community can access and get benefits from Kumu Camp and Anahola Marketplace.</li> <li>• Regional Plan can help unite us, build trust and bring transparency</li> </ul>

### *Project Ideas*

- Housing Resource Center Building Co-op
  - Use OHA to get the word out
  - Identify partners to access alternative funding

### *Additional Research Requests*

- Project team research more on alternative technologies, resources and examples to help with developing a feasible housing resource center building co-op project



## Group 2

### *General feedback on regional plan update process*

- Not all lessees got the letter that was mailed
- Applicants are interested in community planning too, should include them in the plan update process
- Need better outreach – use social media

### *Regional Values & Vision Statement*

- Values statements look good
- Modern ahupua'a vision statement – suggest combining values of the past and technology of today to build a better future of tomorrow
- Not mentioned but vision statement should address that “healing” within the community is also needed
- Vision doesn't include workforce development – build the future, develop skills
  - See them as seeds – the skills they need to stay here
  - We have kids are good with their hands – smart and have ingenuity but need training
- Open up coastal access – this is the community's icebox and it is hard to get there because its blocked off and other people, not from Anahola, are there that should not be there
  - Mo'opuna need access to the coastal resources
  - Subsistence – we live off the land

### *Issues & Opportunities*

ISSUES	OPPORTUNITIES
<ul style="list-style-type: none"> <li>• Crown lands in Anahola Village – ag lots</li> <li>• Facilities not open or accessible to the community – gym, kitchen, etc.</li> <li>• Village people are upset – very few are left</li> <li>• Tractors driving down there at the bridge near Anahola Village which caused its closure</li> <li>• Akule – can't fish down there by Anahola Village</li> <li>• Makai area is unsafe</li> <li>• Drug use, uncontrolled crime, no law enforcement</li> <li>• Neighbors dealing drugs and Kaua'i Police are not enforcing in community</li> <li>• Blood quantum requirements</li> <li>• Vacant lots in Pi'ilani Mai Ke Kai for 15 years – just paying people to cut grass now</li> </ul>	<ul style="list-style-type: none"> <li>• Allow youth at Kumu Camp</li> <li>• Families learning from kūpuna – pass on knowledge</li> <li>• Farming to bring together farmers and fisherman – used to work in harmony as a community.</li> <li>• Bring water to makai area to grow vegetables, kalo and open up access to fish so that there is a place to pass knowledge on to the youth</li> <li>• HHCA is federal and part of Dept. of Interior – use federal officers to evict, send to federal court</li> <li>• Fix jurisdiction issues to allow for better enforcement against criminal activity</li> <li>• Change blood quantum requirement to pass down lease to 1/32</li> <li>• Allow access to cultural places</li> </ul>



<ul style="list-style-type: none"> <li>• Mauka area – trees are growing back, need a lease to maintain area for Kuleana</li> <li>• Wastewater systems - cesspools, going into the ocean</li> <li>• Waitlisted beneficiaries – no more people dying on the waitlist</li> <li>• Anahola community needs healing</li> <li>• Need trust and transparency - earned</li> </ul>	<ul style="list-style-type: none"> <li>• Get people on the vacant lots, homes built</li> <li>• Kuleana lots to live off-grid</li> <li>• 2010 Regional Plan included project for wastewater treatment plant</li> <li>• Political push to get people off the waitlist – organize to push elected officials to act. Research and share how many people have died on the waitlist</li> <li>• Use DHHL lands that are not being used</li> </ul>
--	--

#### *Project Ideas*

- Pedestrian safety – Safe routes to school
  - Crosswalks, speedbumps along around Kanuikapono PCS
- Fire/Police Station – Emergency Services
  - Police need jurisdiction
- Build a Resilience Center
  - Copy Kīlauea Resilience Center
  - Hurricane shelter
  - Possible location: across from U-Turn for Christ
- Trades School – Hō‘ā Ke Ola Pono
  - Lawai‘a is developing
- Open Coastline access
  - Allow fishermen in
  - Create enforcement, training for kuleana lot living (e.g., solar, composting, etc.)
  - Projects work together in this plan – limu restoration, farm lots, etc.
- Removing cars from makai lands
  - Takes a long time
  - Costs money - funding needed
  - Important for safety of children and the land
- Fund community capacity building
  - Develop organizational skills

#### *Additional Research Requests*

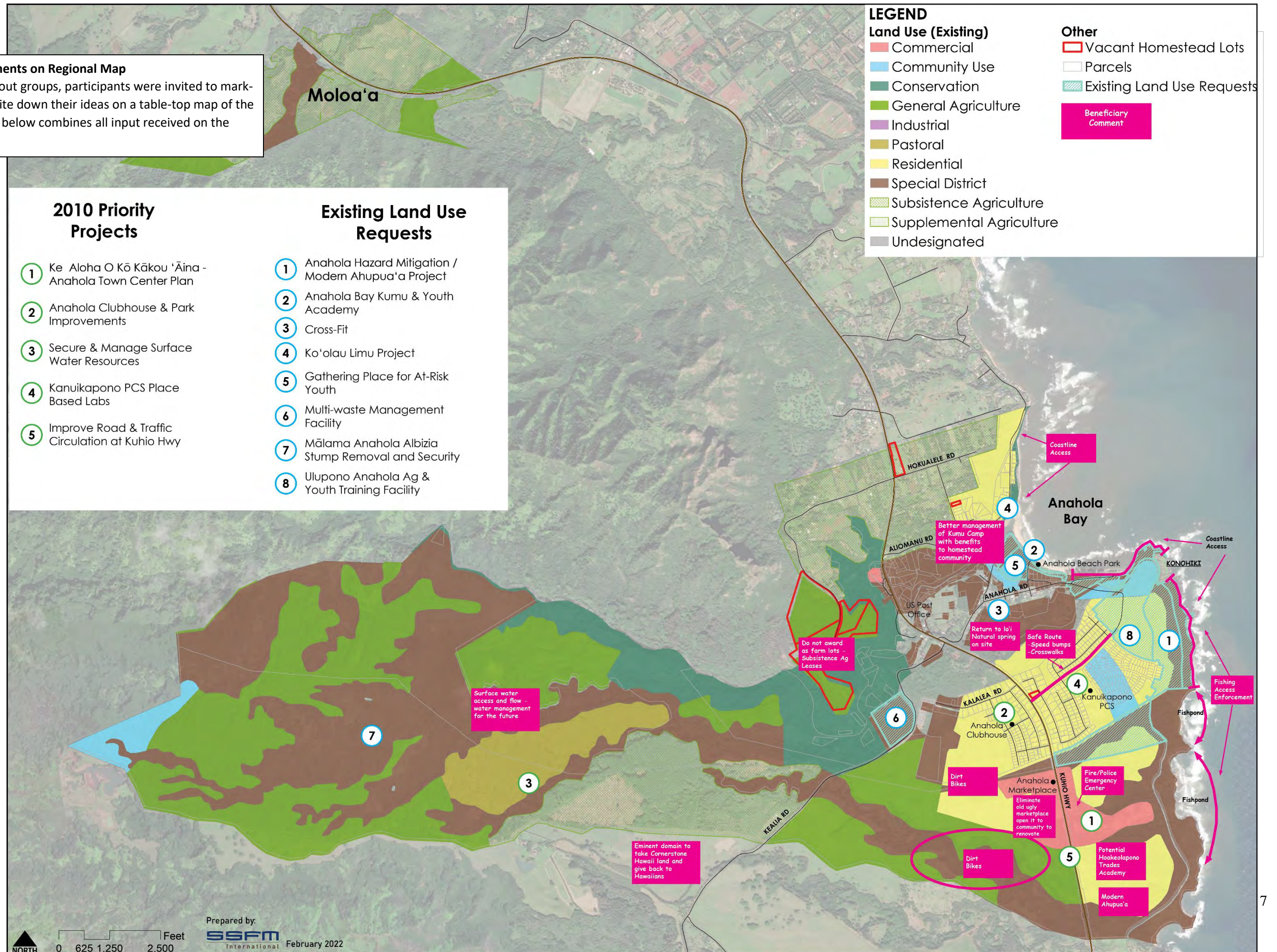
- Update on Hawaiian Home Lands in Anahola Village
- Update on Moloa‘a
- Update on \$600m funding in 2022 Legislature
- Update on Wailua (can be on the side or in email to Rae/Kuulei from KKO)
- Update on meeting notice efforts, if possible, consideration of social media notices.

*Meeting Adjourned at 8:10 p.m.*



## 7. Combined Comments on Regional Map

During the breakout groups, participants were invited to mark-up, draw, and write down their ideas on a table-top map of the region. The map below combines all input received on the maps.





APPENDIX A

Open House Posters





# DEPARTMENT OF HAWAIIAN HOME LANDS

# ANAHOLA REGIONAL PLAN

# UPDATE

## Project Overview

The Anahola Regional Plan is one of twenty-two regional plans the Department of Hawaiian Home Lands (DHHL) has developed statewide. DHHL Regional Plans allow homestead lessees to identify and solve their own issues and concerns. With support from DHHL and other partners, the planning process and resulting updated Regional Plan are intended to stimulate capacity-building, and to encourage stakeholders to champion the projects that will help to better their community.

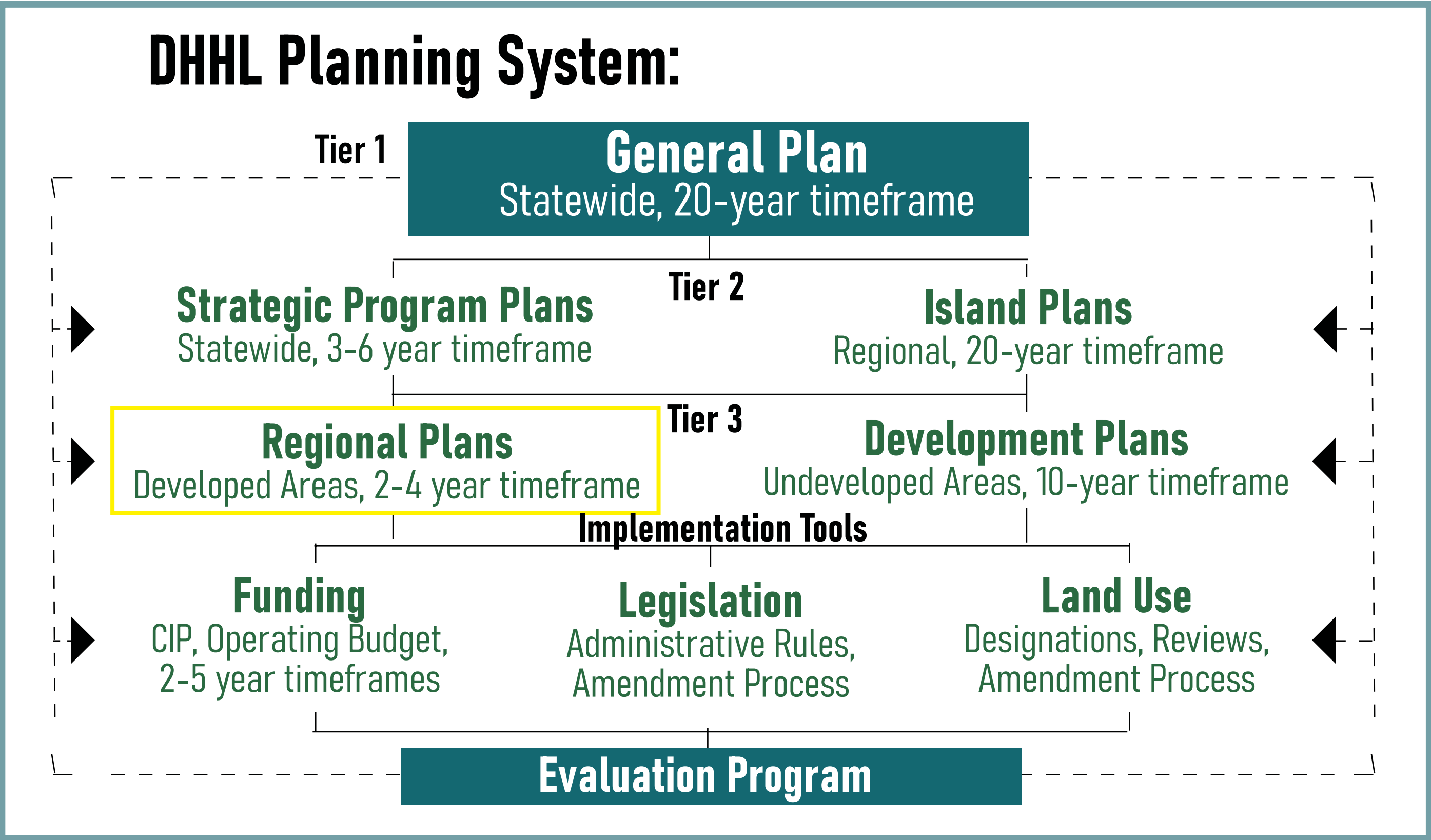
Anahola was selected for a Regional Plan update because there has been a lot of community led action over the last 10 years, despite much of the last plan’s priority projects not being implemented. This update provides the opportunity to take a breath together and coordinate those actions moving forward to reflect the needs, vision and values important to the Anahola homestead community. .

## Purpose of the Regional Plan:

- To directly involve the homestead community in planning for their region.
- To identify and prioritize projects that are important to the homestead community.
- To identify potential resources (such as partners and funding sources) for implementing priority projects.

## The Plan Update Will Include:

- Homestead Regional Profile
- Regional Lands & Development
- Infrastructure
- Homestead Issues, Opportunities, & Priorities
- Vision Statement & Community Values for the Region
- Implementation Actions Steps for each Priority Project



## Project Schedule

SUBJECT TO CHANGE

**August - September 2021**

Background Research  
Homestead Leadership Meeting

**March - August 2022**

Draft Plan Development

**September - October 2022**

Final Plan Development



**December 2021 - August 2022**

Community Meetings  
Issue/Opportunities, Community Vision, Priority Projects,  
Implementation Actions, Beneficiary Review Draft Plan

**November 2022**

Present Final Plan to Hawaiian  
Homes Commission for Approval

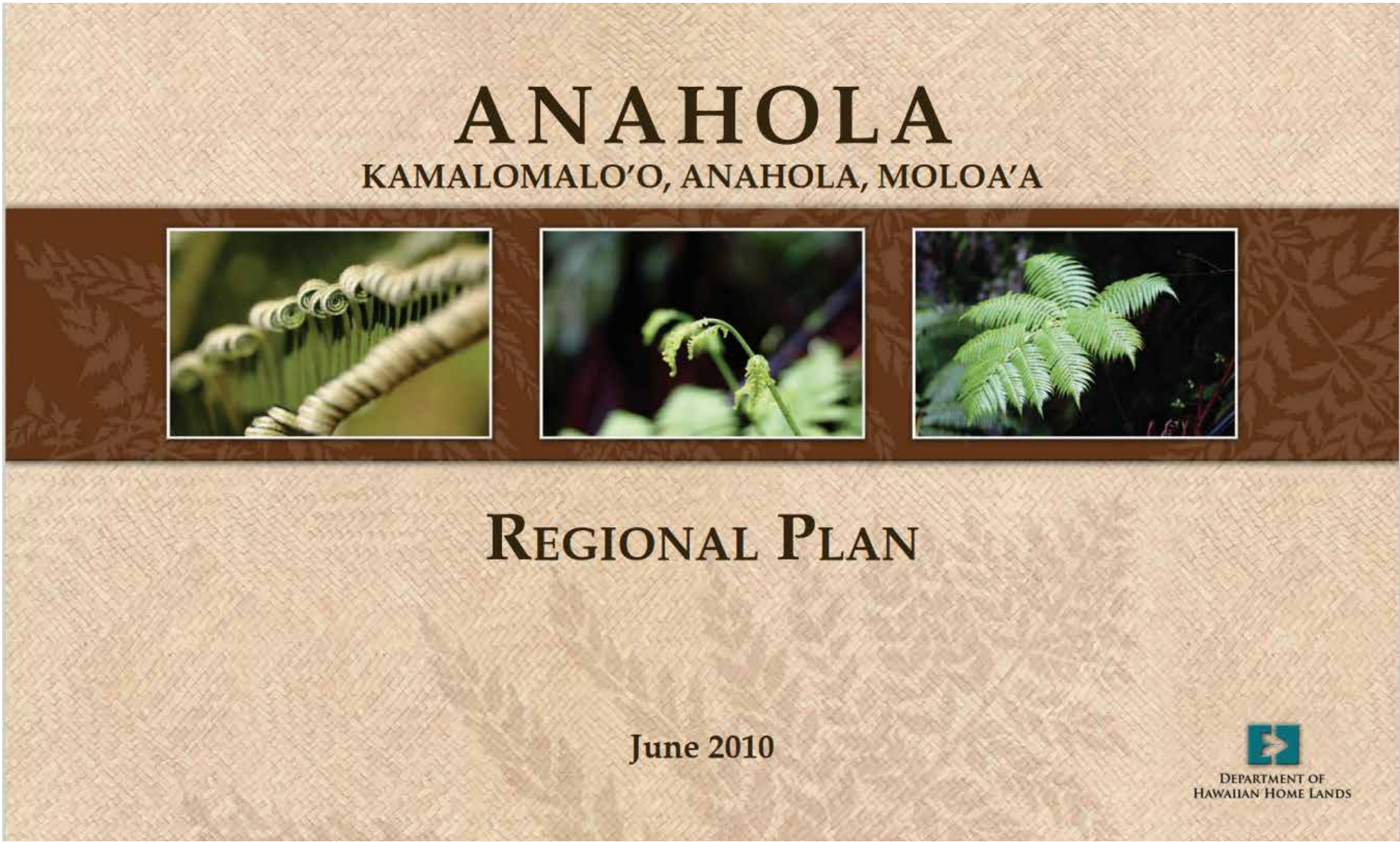




DEPARTMENT OF HAWAIIAN HOME LANDS

# ANAHOLA REGIONAL PLAN UPDATE

## 2010 REGIONAL PLAN & PRIORITY PROJECT UPDATES



The 2010 Anahola Regional Plan included five priority projects. As we update the regional plan, it is important to revisit the 2010 priority projects to check-in on the current status, consider whether any of the priorities should be carried forward and discuss lessons learned.

### I. Ke Aloha O Kō Kākou ‘Āina - Anahola Town Plan Center



#### 2010 Priority Project Description:

In 2009, the Anahola community created the Anahola Town Center Community-Based Conceptual Land Use Plan for 194 acres along Kuhio Highway next to the existing DHHL Anahola homestead subdivision. The priority plan elements identified were:

1. Develop the organizational capacity of the community-based management team. Identify next steps to ensure plan implementation, including attention to the phasing of the bike path to Anahola;
2. Seek funding with the Anahola Hawaiian Homestead Association for the community commercial kitchen;
3. Pursue lease agreements with DHHL and other authorities to establish the cemetery as identified in the Town Center Plan

#### Current Status:

- Community kitchen constructed.
- Cemetery/secure resting place for iwi kupuna not yet implemented.
- Kaua'i Island Plan Land Use Designations not updated.
- Anahola Town Plan Center & implementation strategy should be revisited.



# 2010 REGIONAL PLAN & PRIORITY PROJECT UPDATES

## (CONT.)

### 2. Anahola Clubhouse & Park Improvements

#### 2010 Priority Project Description:

Improvements are needed at the Clubhouse and park to ensure safety and continued use of the resources. Motion sensor lights are needed around the facility to increase visibility in the evenings and provide additional security. General building improvements and upgrades needed were:

1. Motion sensor lights;
2. Green building improvements;
3. Upgrades to existing kitchen, restroom & computer room;
4. Improved maintenance of playground & basketball court; and
5. Expansion of baseball field to support little league tournaments.



#### Current Status:

In 2018-19, County of Kauaʻi completed various projects that included:

- Complete basketball court renovation.
- Parking lot paving & striping.
- Complete playground renovation.
- Construction of ADA walkways that connect Clubhouse with baseball & basketball amenities.
- Baseball field improvements: new fencing, new ADA walkways, new dugouts, concrete pads for bleachers, concrete pad for announcers' booth, and reworking of infield dirt & outfield grass.

Additional projects are on hold due to budget constraints.

### 3. Secure & Manage Surface Water Resources (non-potable)

#### 2010 Priority Project Description:

Surface water resources from the Kealia watershed through Anahola are an asset and the community would like to better understand current conditions for safety and potential future uses. This includes water that runs from the Upper Anahola Ditch to the Kaneha Ditch, to the Kaneha Reservoirs 1, 2, and 3. Research is also needed for the waters that flow in the Lower Anahola Ditch, through Kaupaku, Ka'alula and Kamalomalo'o Streams and Anahola River to the shores of Anahola.



#### Current Status:

In 2016 DHHL received notice of \$3 million funding from USDA Rural Development to match DHHL's \$3.8 million contribution for a total of \$6.8 million. Funds are being used for major capital improvements to the DHHL Anahola Farm Lots Public (drinking) Water System (PWS #432). The improvements include: [1] replacing components of the water system that have reached their useful life span (i.e. water tanks and distribution lines); [2] improve water pressure issues; [3] Address safety and security measures at the water storage tank and KDOW interconnection; [4] increase operational efficiencies of the well pumps, control valves, and fire protection facilities.



# 2010 REGIONAL PLAN & PRIORITY PROJECT UPDATES

## (CONT.)

### 4. Support Kanuikapono 21st Century Ahupua‘a Place Based Labs

**2010 Priority Project Description:**

Kanuikapono is a charter school in Anahola offering 21st Century Ahupua‘a curriculum which integrates resource management of natural and cultural resources within the ahupua‘a. The school had two priority projects:

- 1. Construction of a new Learning Resource Center, to be located on DHHL land adjacent to the Pi‘ilani Mai Ke Kai subdivision;
- 2. Establish mobile educational place-based learning labs throughout the ahupua‘a of Anahola.

**Current Status:**

Funding needed for construction of Learning Resource Center. DHHL needs to work with Anahola community to identify locations for educational learning labs in Anahola.



### 5. Improve Road & Traffic Circulation to Kuhio Highway

**2010 Priority Project Description:**

This project seeks to improve roadway connectivity in Anahola by increasing direct access to Kuhio Highway. The purpose of these improvements is to support future commercial & residential activities in Anahola such as Pi‘ilani Mai Ke Kai & Anahola Town Center. Kuhio Highway, a two-lane road, is the primary vehicular transportation arterial through Anahola and is managed by State Department of Transportation-Highways. Future commercial activities located along Kuhio Highway would also benefit from more direct access to Kuhio Highway.

**Current Status:**

Discussions with State Department of Transportation-Highways and County of Kaua‘i are ongoing. State DOT-Highways will be resurfacing, re-striping and installing rumble bars for the Anahola section of Kuhio Highway in 2022.





DEPARTMENT OF HAWAIIAN HOME LANDS

# ANAHOLA REGIONAL PLAN UPDATE

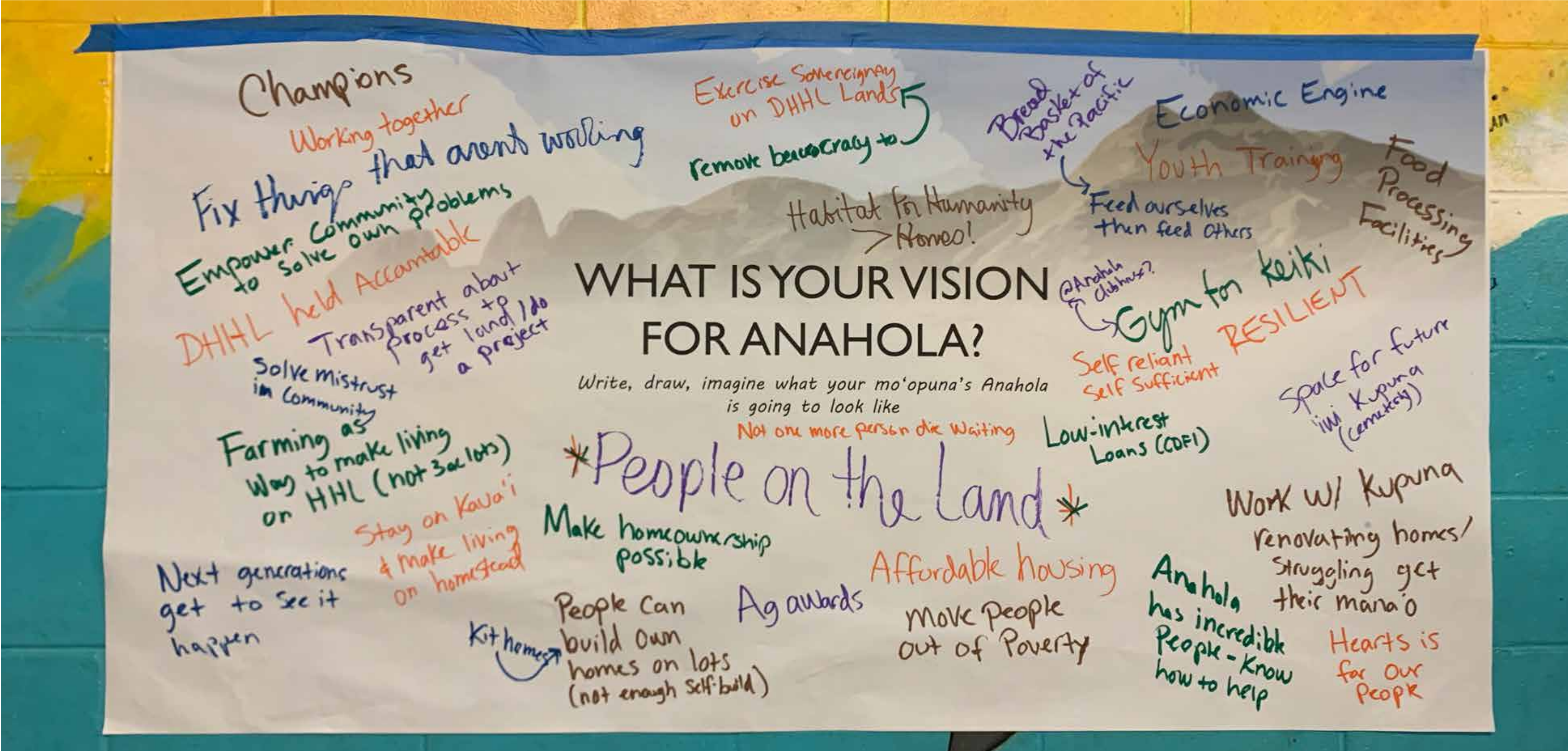
## REGIONAL VALUES & VISION

### Draft Regional Values

				
Support & Care for our Kupuna	Uplift & Empower our Youth	Community Support & Collective Action	Self-Reliance & Self-Sufficiency	Trust & Transparency
<ul style="list-style-type: none"><li>• Listening to our kupuna who have a lot of mana`o to share</li><li>• Working with our kupuna</li><li>• Helping our kupuna who need support</li><li>• No more people dying on the waitlist</li></ul>	<ul style="list-style-type: none"><li>• Working with youth now so future generations can see our vision happen</li><li>• Creating safe spaces for youth to come together</li><li>• Teaching skills and provide job training</li></ul>	<ul style="list-style-type: none"><li>• Working together</li><li>• Showing our heart for the community</li><li>• Sharing knowledge, experience and skills</li><li>• Empowering the community to solve the challenges we face</li></ul>	<ul style="list-style-type: none"><li>• Getting people on the land</li><li>• Developing economic engines</li><li>• Exercising Hawaiian sovereignty</li><li>• Growing resilience</li><li>• Being able to come home and/or stay in Anahola</li></ul>	<ul style="list-style-type: none"><li>• Working with DHHL to get land and do projects on Hawaiian home lands</li><li>• Healing mistrust in the community</li><li>• Holding DHHL accountable</li><li>• Removing bureaucracy</li></ul>

### Draft Vision Statement

Anahola, Kamalomalo‘o, and Moloa‘a, collectively known as the Anahola region, is the largest Hawaiian homestead community on Kaua‘i. Anahola is a community that supports and cares for our kupuna, uplifts and empowers our youth and builds self-reliance and self-sufficiency of our people. We envision a unified community working to heal and come together toward a resilient future grounded in Hawaiian values, culture, and love for this place.







# ANAHOLA REGIONAL PLAN UPDATE

## ISSUES & OPPORTUNITIES

### I. Getting people on the land/onto homesteads

ISSUES	OPPORTUNITIES
<ul style="list-style-type: none"><li>• People are dying on the waitlist.</li><li>• People are waiting to get on the land.</li><li>• There are vacant homestead lots and ag lots with no agriculture happening.</li><li>• Some people cannot afford to buy developer-built homes.</li></ul>	<ul style="list-style-type: none"><li>• Remove unnecessary hurdles to get on the land.</li><li>• Improve DHHL communication and transparency about how beneficiaries can access/malama vacant land.</li><li>• Create a CDFI or work with DHHL to offer low-interest loans to beneficiaries.</li><li>• Some people have family members who can build homes themselves (e.g., if DHHL helps buy bulk kit homes).</li></ul>

### 2. 2010 Regional Plan Implementation

ISSUES	OPPORTUNITIES
<ul style="list-style-type: none"><li>• The priority projects in the last plan were not implemented.</li><li>• Last plan did not discuss implementation, only selected priorities.</li><li>• 2010 plan did not have a vision statement</li><li>• Some of the projects were not possible for community to implement alone.</li></ul>	<ul style="list-style-type: none"><li>• Document lessons learned from last plan.</li><li>• Articulate and set forth a vision which can help with identifying and implementing projects.</li><li>• Focus on implementation in this plan.</li><li>• SSFM and DHHL can help by telling community if projects are realistic and translate community ideas into actions steps for implementation.</li></ul>





# ANAHOLA REGIONAL PLAN UPDATE

## ISSUES & OPPORTUNITIES

### 3. Taking care of and improving community spaces

ISSUES	OPPORTUNITIES
<ul style="list-style-type: none"><li>• Makai area has cars burning all the time.</li><li>• Other vacant land is taking resources to mow and maintain instead of being used for homesteads or by community.</li><li>• Need to fix-up beach park bathrooms.</li><li>• Kupuna need support renovating and maintaining homes.</li><li>• Kumu Camp and Camp Faith.</li><li>• Need space for cemetery.</li></ul>	<ul style="list-style-type: none"><li>• Support the community members already coming together to care for community spaces on Hawaiian Home Lands.</li><li>• People in the community have skills and gifts to share.</li></ul>

### 4. Water access and use

ISSUES	OPPORTUNITIES
<ul style="list-style-type: none"><li>• 10 years ago, water was #1 issue.</li><li>• Mauka reservoirs are overgrown.</li><li>• Water in reservoirs is not being used for homesteads; goes back into Anahola River.</li></ul>	<ul style="list-style-type: none"><li>• Clean out the trees from reservoirs, the water from Anahola River is right there.</li><li>• Surface water from reservoirs can be redirected to get water to homesteads.</li></ul>

APPENDIX B

PowerPoint Slides

# Anahola Regional Plan Update

**Community Meeting #2**

**February 24, 2022**



HAWAIIAN HOME LANDS  
HAWAIIAN HOMES COMMISSION  
DEPARTMENT OF HAWAIIAN HOME LANDS

**SSFM**  
International



# **Tonight's Agenda**

1. Sign-in & Open House
2. Welcome, Introductions & Updates
3. Discussion Groups
  - a. Community Values & Visions
  - b. Issues & Opportunities
  - c. Project Ideas
4. Report Back
5. Closing & Next Steps

# Team Introductions



## DHHL Planning Office Team:

- Andrew Choy (Acting Planning Program Manager)
- Nancy McPherson (Project Manager, Kaua'i Liaison)

## DHHL Homestead Kaua'i District Office:

- Erna Kamibayashi
- Rhonda Gadingan

## DHHL Land Management Division:

- Kaipo Duncan (Kaua'i Land Agent)



## Consultant Team (SSFM International):

- Melissa May (Principal-in-charge)
- Jared Chang (Planner, Facilitator)
- Malachi Krishok (Project Manager, Planner)

### **SSFM Experience/Related Projects:**

- DHHL General Plan Update (ongoing)
- DHHL Hanapēpē Master Plan & EA (completed 2020)
- County of Kaua'i General Plan (completed 2018)

# **Tonight's Discussion Kuleana**

- **Be Open:** open your mind, ears and heart. Take home new ideas and information.
- **Be comfortable:** move around and use facilities(while practicing social distancing).
- **Be Respectful:** please do not interrupt the person that is talking, show aloha, treat others how you would like to be treated.
- **Be Creative:** work towards future solutions/aspirations.
- **Agree to Disagree:** accept that others may have different perspectives and opinions.
- **Cellphones off or on silent:** please take calls/texts outside.



# **Tonight's Meeting Objectives**

- Address all requests on priority project status & regional project updates requested during meeting #1.
- Receive feedback on Draft Anahola value statements and Draft Anahola vision statement; Does it resonate with you?
- Document issues, opportunities and existing community resources and assets.
- Compile an initial list of Anahola priorities for further consideration at future regional plan meetings.

# **Tonight's Meeting Format**

- Open House Area
- Presentation
  1. Mtg #1 Re-cap
  2. Draft Regional Values & Vision
  3. Updates on 2010 Priority Projects & Other Regional Projects
- Breakout group discussion & activity
  1. Regional Values & Vision
  2. Issues & Opportunities
  3. Project Ideas
- Report back



# COMMUNITY MEETING #1 REVIEW & RE-CAP



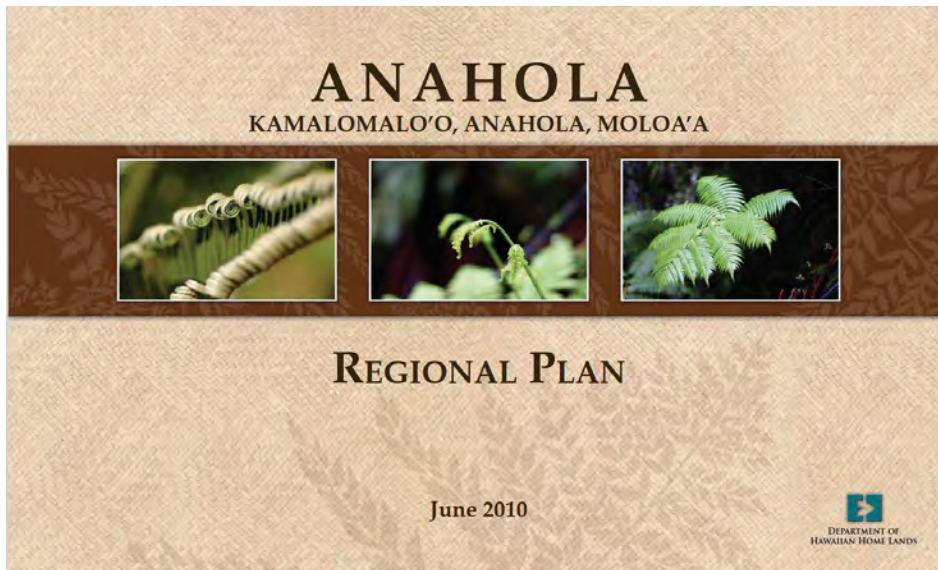
# Purpose of Regional Plans



- For the community to be involved in planning for their region.
- For the community to identify and prioritize projects within the region.
- For the plan to include detailed action steps needed to implement the priority projects.



# What Will the Update Include?



- Homestead Regional Profile
- Regional Lands & Development
- Infrastructure
- Homestead Issues, Opportunities & Priorities
- Vision Statement & Community Values for Region
- Implementation Action Steps for each Priority Project

Anahola was selected for a Regional Plan update because despite much of the last plan's priority projects not being implemented, there has been a lot of community led action over the last 10 years – the update provides the opportunity to take a breath together and coordinate those actions moving forward.

# Anahola Regional Plan Update Beneficiary Consultation Schedule



*Tentative Schedule, Subject to Change*

# Meeting #1 Re-Cap

## INFO REQUESTED:

- Make copies of 2010 Plan available
- Updates on what has been done for each 2010 priority project
- Updates on Pi'ilani Mai Ke Kai and homestead awards in Anahola
- List of vacant lots





A landscape photograph showing a dry, grassy field in the foreground. A large, leafy tree stands on the right side. In the background, there are rolling hills or mountains under a sky with large, white clouds. A semi-transparent brown rectangle is overlaid on the lower left portion of the image, containing white text.

# 2010 PRIORITY PROJECTS & OTHER REGIONAL PROJECT UPDATES



# 2010 Regional Plan Priority Projects

## 1. Ke Aloha O Ko Kakou 'Āina - Anahola Town Center Plan (ATCP)



In 2009, the Anahola community created the Anahola Town Center Community-Based Conceptual Land Use Plan for 194 acres along Kūhiō Highway next to the existing DHHL Anahola homestead subdivision.

### Status:

Commercial kitchen constructed. Cemetery/ secure resting place for iwi kupuna not yet implemented. ATCP & implementation strategy need to be revisited & KIP LUD's need amending.

# 2010 Regional Plan Priority Projects

## 2. Anahola Clubhouse & Park Improvements



Improvements are needed at the Clubhouse and park to ensure safety and continued use of the resources.

### Status:

In 2018-19, County of Kaua'i completed various projects that included:

- Complete basketball court renovation.
- Parking lot paving & striping.
- Complete playground renovation.
- Construction of ADA walkways that connect Clubhouse with baseball & basketball amenities.
- Baseball field improvements: new fencing, new ADA walkways, new dugouts, concrete pads for bleachers, concrete pad for announcers' booth, and reworking of infield dirt & outfield grass.



# 2010 Regional Plan Priority Projects

## 3. Secure & Manage Surface Water Resources (non-potable)



Surface water resources from the Kealia watershed through Anahola are an asset and the community would like to better understand current conditions for safety and potential future uses.

### Status:

In 2016 DHHL received notice of \$3 million funding from USDA Rural Development to match DHHL's \$3.8 million contribution for a total of \$6.8 million. Funds are being used for major capital improvements to the DHHL Anahola Farm Lots Public (drinking) Water System (PWS #432).

Surface water resources were reevaluated in response to beneficiary feedback during the Anahola Kuleana Homestead Settlement Plan process.



# 2010 Regional Plan Priority Projects

## 4. Support Kanuikapono 21st Century Ahupua'a Place Based Labs



Kanuikapono charter school had two priority projects:

1. Construction of a new Learning Resource Center, to be located on DHHL land adjacent to the Pi'ilani Mai Ke Kai subdivision;
2. Establish a mobile educational place-based learning labs throughout the ahupua'a of Anahola.

### **Status:**

Funding needed for construction of the Learning Resource Center. DHHL to work with Anahola community to identify locations for educational learning labs in Anahola. May be revisited when discussing Anahola Town Center Plan during this Anahola Regional Plan Update.



# 2010 Regional Plan Priority Projects

## 5. Improve Road & Traffic Circulation to Kūhiō Highway



The proposed project seeks to improve roadway connectivity in Anahola by increasing direct access to Kūhiō Highway. The purpose of these improvements is to support future commercial and residential activities in Anahola such as Pi'ilani Mai Ke Kai and the Anahola Town Center.

### **Status:**

Discussions with State Department of Transportation-Highways and County of Kaua'i are ongoing.

# *Pi'ilani Mai Ke Kai* Subdivision Total 171 Lots

Phase 1: 80 Lots

Phase 2: 51 Lots

Phase 3: 40 Lots

## **Pi'ilani Mai Ke Kai Updates**

- Redesign of the master plan was required due to the presence of wetlands.
- Phase 2 will offer 51 lots and offer letters are expected to go out this year.
- Construction for phase 3 is approximately three years out, subject to funding.





# **Anahola Kuleana Settlement Plan**

## **Progress to-date**

- Kuleana Settlement Planning completed in July 2020.
- Ch. 343 EA prepared and completed in May 2021.
- Settlement Plan includes 101 2-acre subsistence agriculture lots, 14 10-acre pastoral lots and 28 acres designated for community use.

# **Anahola Kuleana Settlement Plan**

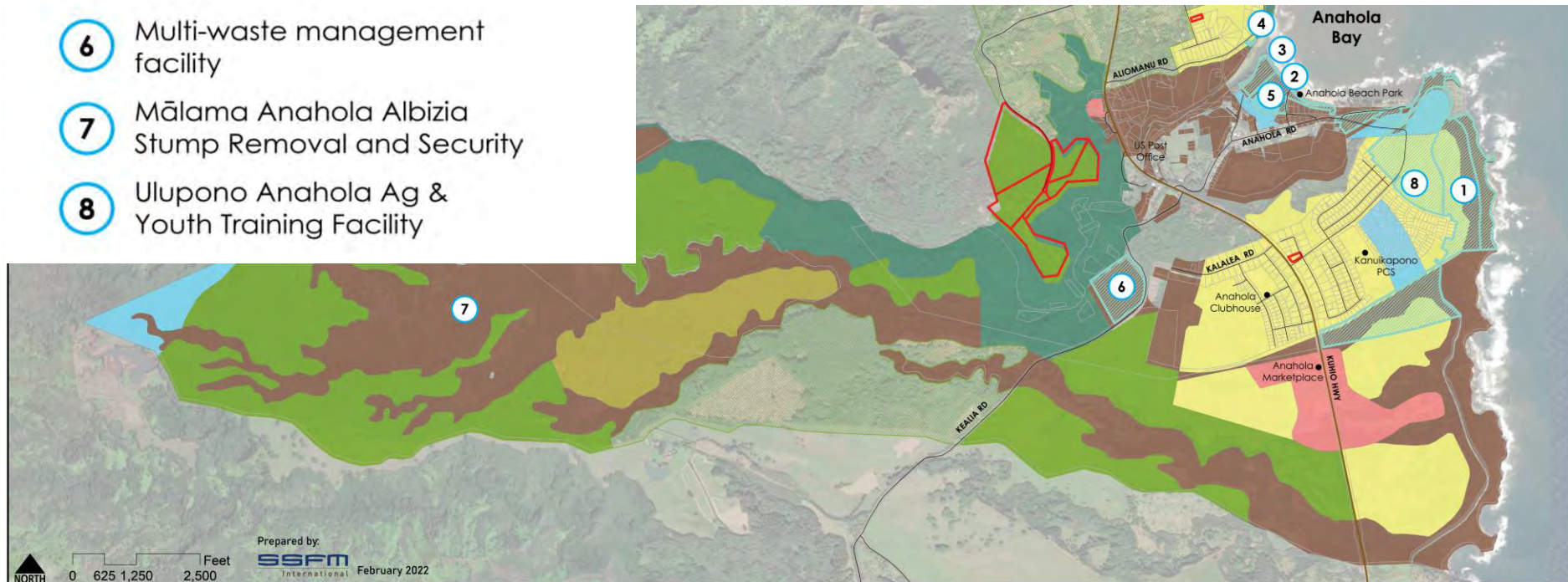
## **Actions Moving Forward**

- DHHL is currently going through procurement process to select a vendor to do metes and bounds survey to stakeout homestead lot boundaries and design internal road improvements within the settlement.
- DHHL looking at temporary land management options to manage the area during the interim period before award of homestead lots to beneficiaries.
- DHHL is developing an orientation program for prospective lessees to:
  1. Make aware of what a Kuleana Homestead lot is and is not
  2. Prepare prospective future lessees to better be able to successfully settle on their lot.



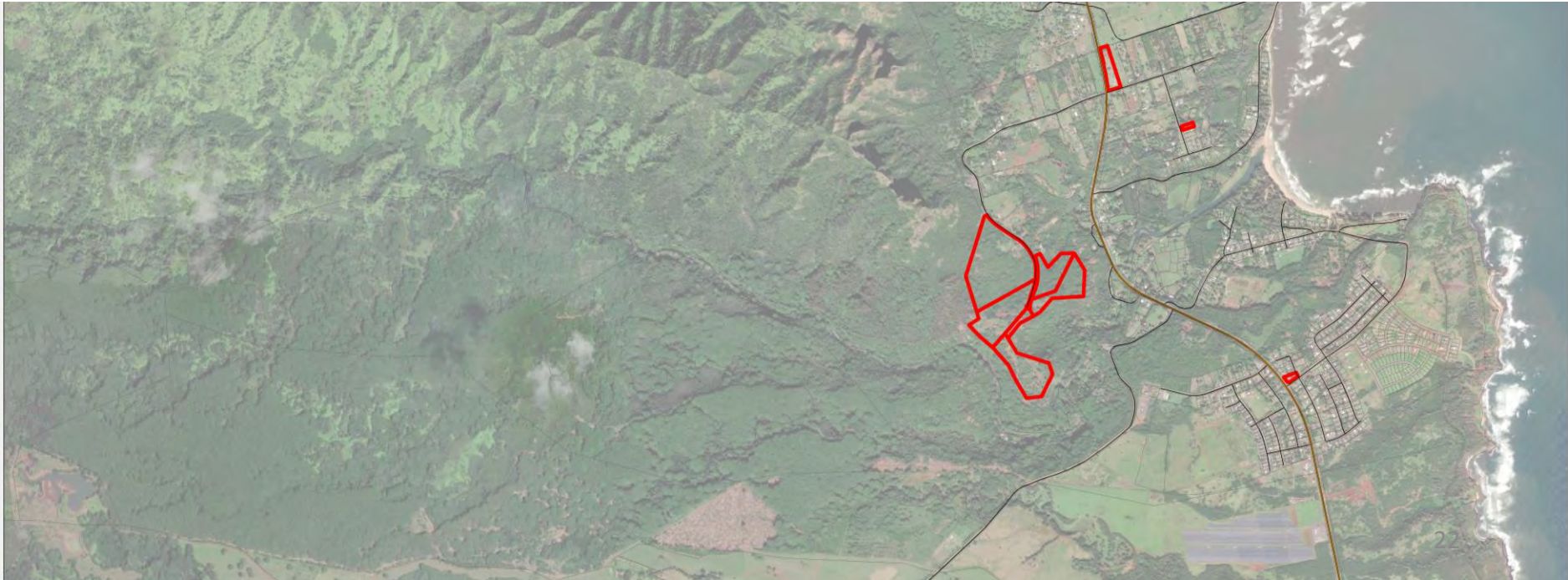
# Other Projects and Land Requests

- 1 Anahola Hazard Mitigation / Modern Ahupua'a Project
- 2 Anahola Bay Kumu & Youth Academy
- 3 Cross-Fit at Camp Faith
- 4 Ko'olau Limu Project
- 5 Gathering Place for At-Risk Youth
- 6 Multi-waste management facility
- 7 Mālama Anahola Albizia Stump Removal and Security
- 8 Ulupono Anahola Ag & Youth Training Facility




# Vacant Lots

- Currently total of 9 vacant Homestead lots in Region:
  - 2 Residential
  - 7 Agricultural



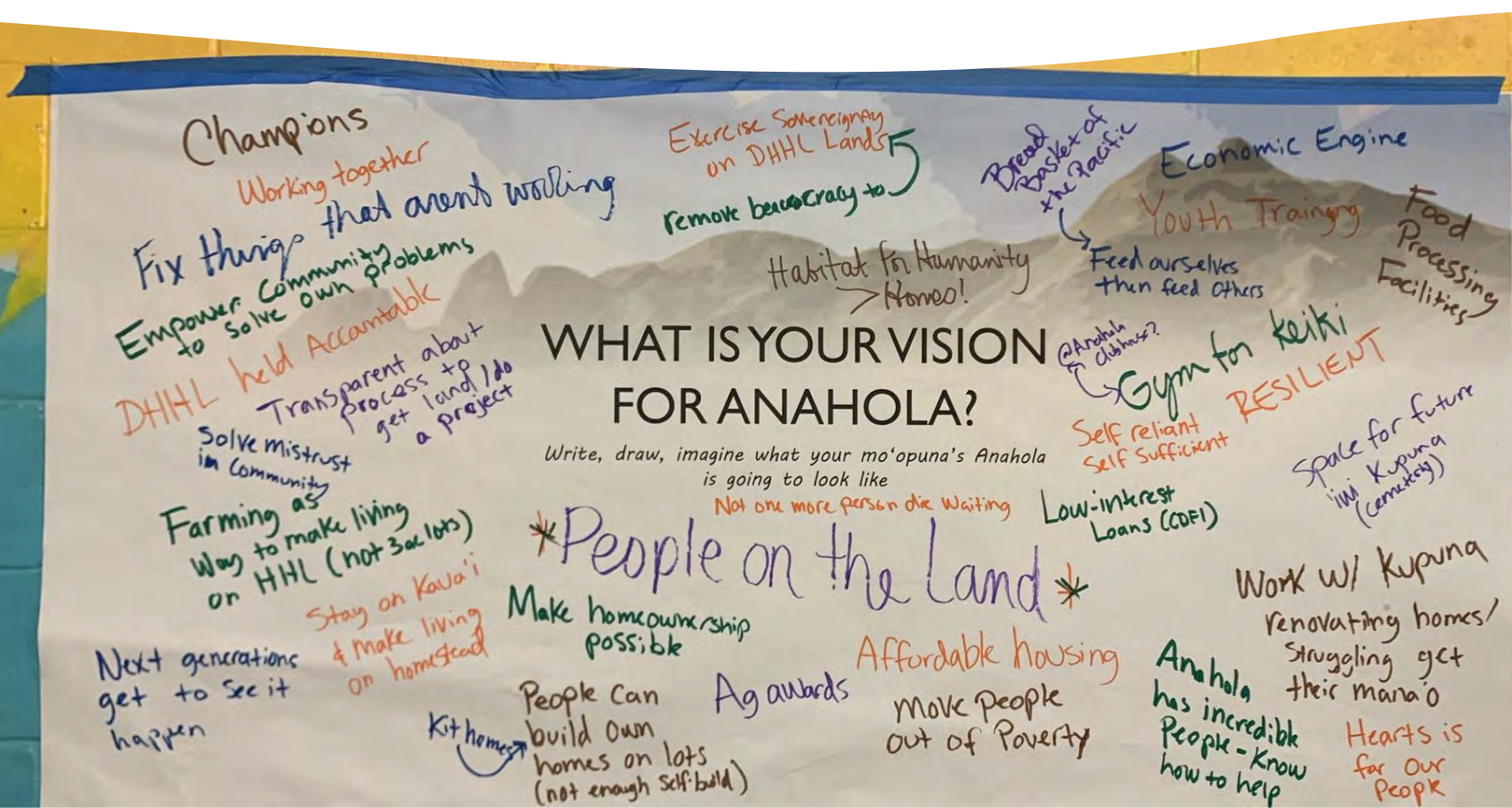


A landscape photograph of a savanna. In the foreground, there is a dark, rocky path. To the left, a wire fence runs across the frame. The middle ground features a large pile of driftwood on the right and several acacia trees on the left. The background shows a clear blue sky and distant hills.

# REGIONAL VALUES & VISION

# Where are we headed?

- Regional Plans are vision-based documents
  - A shared vision that supports common community values is the foundation for the overall plan and priority projects.





# Draft Regional Values



Support & Care for our  
Kūpuna



Uplift and Empower our  
Youth



Self-Reliance & Self-  
Sufficiency



Community Support &  
Collective Action



Trust & Transparency

# **Draft Vision Statement**

Anahola, Kamalomalo'o, and Moloa'a, collectively known as the Anahola region, is the largest Hawaiian homestead community on Kaua'i. Anahola is a community that supports and cares for our kūpuna, uplifts and empowers our youth and builds self-reliance and self-sufficiency of our people. We envision a unified community working to heal and come together toward a resilient future grounded in Hawaiian values, culture, and love for this place.

# **BREAKOUT GROUPS:**

- 1. Regional Values & Vision**
- 2. Issues, Opportunities, & Resource**
- 3. Project Ideas**

An aerial photograph of a coastal town nestled at the base of a large, rugged mountain range. The town is visible as a cluster of buildings and roads. The ocean is on the right, with waves breaking on a sandy beach. A semi-transparent olive-green rectangle is overlaid on the lower-left portion of the image, containing the text "REPORT BACK".

**REPORT BACK**



A photograph of a meeting room with people seated at tables, facing a presentation area. The room has a high ceiling with exposed wooden beams and modern lighting fixtures. Large windows on the left side provide natural light. In the background, there are several whiteboards and a screen displaying a presentation. A large, semi-transparent orange rectangle is overlaid on the center of the image, containing the text "WRAP-UP & NEXT STEPS" in white, bold, sans-serif font.

# WRAP-UP & NEXT STEPS

## Please feel free to contact us:



Nancy McPherson, Planner

[nancy.m.mcpherson@hawaii.gov](mailto:nancy.m.mcpherson@hawaii.gov)

(808) 620-9519



Malachi Krishok, Planner

[mkrishok@ssfm.com](mailto:mkrishok@ssfm.com)

(808) 356-1272

**IF YOU OR SOMEONE IN YOUR HOUSEHOLD HAS TESTED POSITIVE FOR COVID-19 OR HAVE SYMPTOMS OF COVID-19 WITHIN 2 DAYS OF THIS MEETING PLEASE CONTACT US.**

**THIS WILL HELP WITH CONTACT TRACING AND HELP SLOW THE SPREAD OF COVID-19 IN THE COMMUNITY.**