



HAWAIIAN HOME LANDS

HAWAIIAN HOMES COMMISSION · DEPARTMENT OF HAWAIIAN HOME LANDS

G-5

In-Depth Update on Climate Change and Resilience Issues Affecting Hawaiian Home Lands, Statewide, Pt. 2

January 18-19, 2022



“Deep Dive” Climate Change Workshop, Part 2

- Introduction by DHHL Planning Office staff
- Carbon dioxide emissions and climate change update by Dr. Charles “Chip” Fletcher, Interim Dean of the School of Ocean and Earth Science and Technology (SOEST), University of Hawai‘i at Mānoa, and Chairperson of the Honolulu Climate Change Commission
- Update on State of Hawai‘i climate change-related land use initiatives by Leah Laramée, Natural Resource Planner, Department of Land and Natural Resources, Division of Forestry and Wildlife (DLNR-DoFAW)



Previous HHC Informational Updates

HHC Meeting	Item No. & Title	Topics / Description
November 2021 (Virtual)	Item G-1, In-Depth Update on Climate Change and Resilience Planning Affecting Hawaiian Home Lands, Statewide	Climate Change “Deep Dive” focused on the most recent data on climate change impacts and responses starting at International/ United Nations levels, then drilling down into national, state and local initiatives that have implications for Hawaiian Home Lands, DHHL beneficiaries, and the Hawaiian Homes Commission.
July 2021 (Virtual)	Item G-3, Update on Statewide Initiatives and Actions Related to Climate Change and Resilience	Reviewed federal, state & county activities July 2019 to July 2021; summarized DHHL initiatives re: community resilience planning, wetland restoration, and cesspool conversion; discussed climate justice and climate adaptation ideas for natural and working lands.
June 2019 (O’ahu)	Item G-1, Update on DHHL Efforts: Climate Change and Sea Level Rise Adaptation, Community Resilience and Hazard Mitigation on Hawaiian Home Lands, Statewide	Reviewed federal-, state- & county-level activities over previous year; focus on best practices and integration of coastal zone management, community resilience, disaster preparedness, vulnerability analysis & hazard mitigation planning.
April 2019 (Molokai)	Item G-3, Moloka’i Planning Projects Status (pages 5-15)	So. Molokai Shoreline Erosion Management Plan (SM-SEMP) Phase I; CCA & SLR planning at federal, state & county levels.
June 18-19, 2018 (O’ahu)	Item G-4, Update on DHHL Efforts: Climate Change & Sea Level Rise Adaptation, Community Resilience & Hazard Mitigation on Hawaiian Home Lands, Statewide	First update, per HHC request at April 2018 meeting. Reviewed federal, state and county activities Sept. 2016 to June 2018. Continued to recommend integrated, ahupua’a based approach.

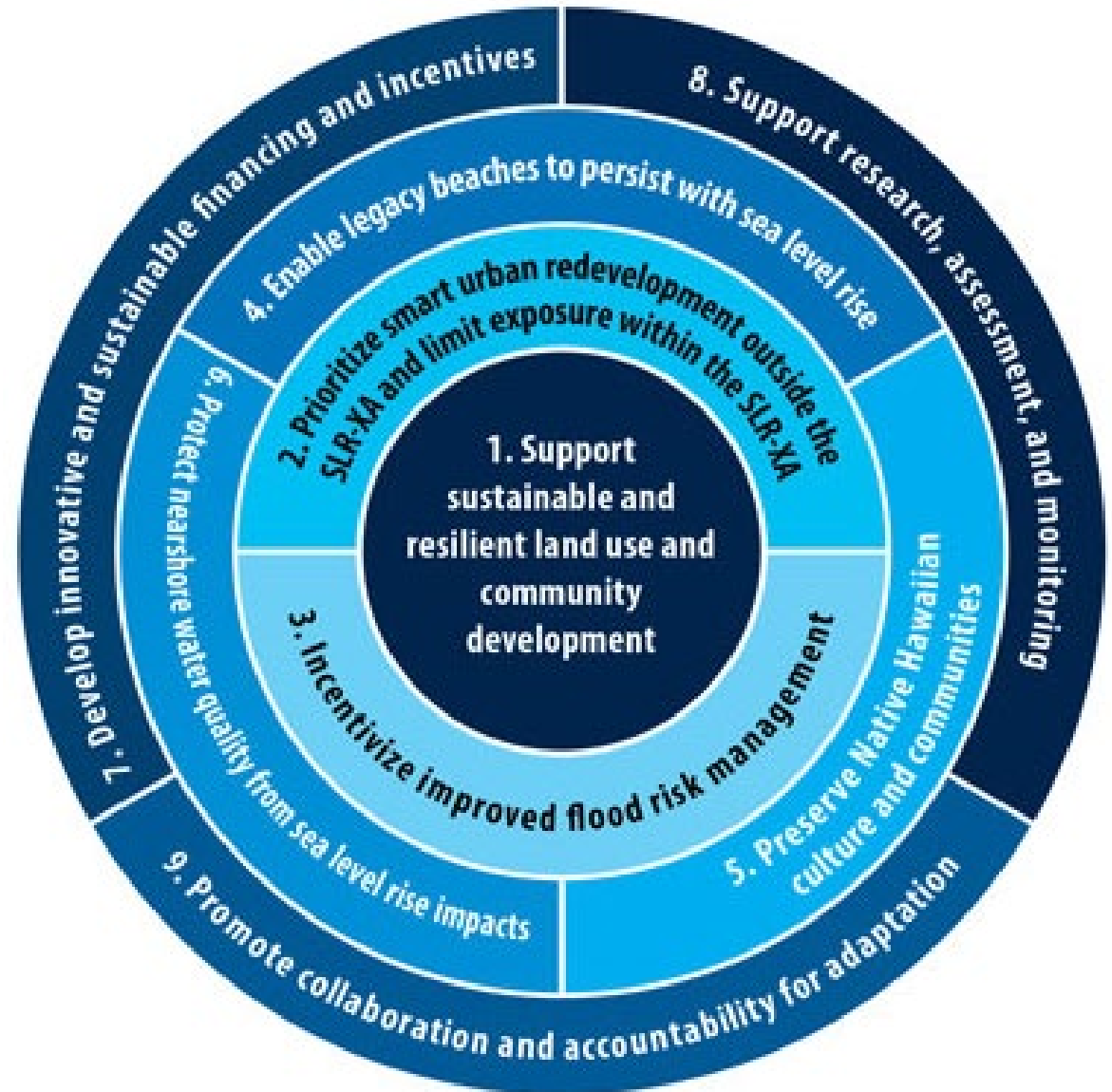
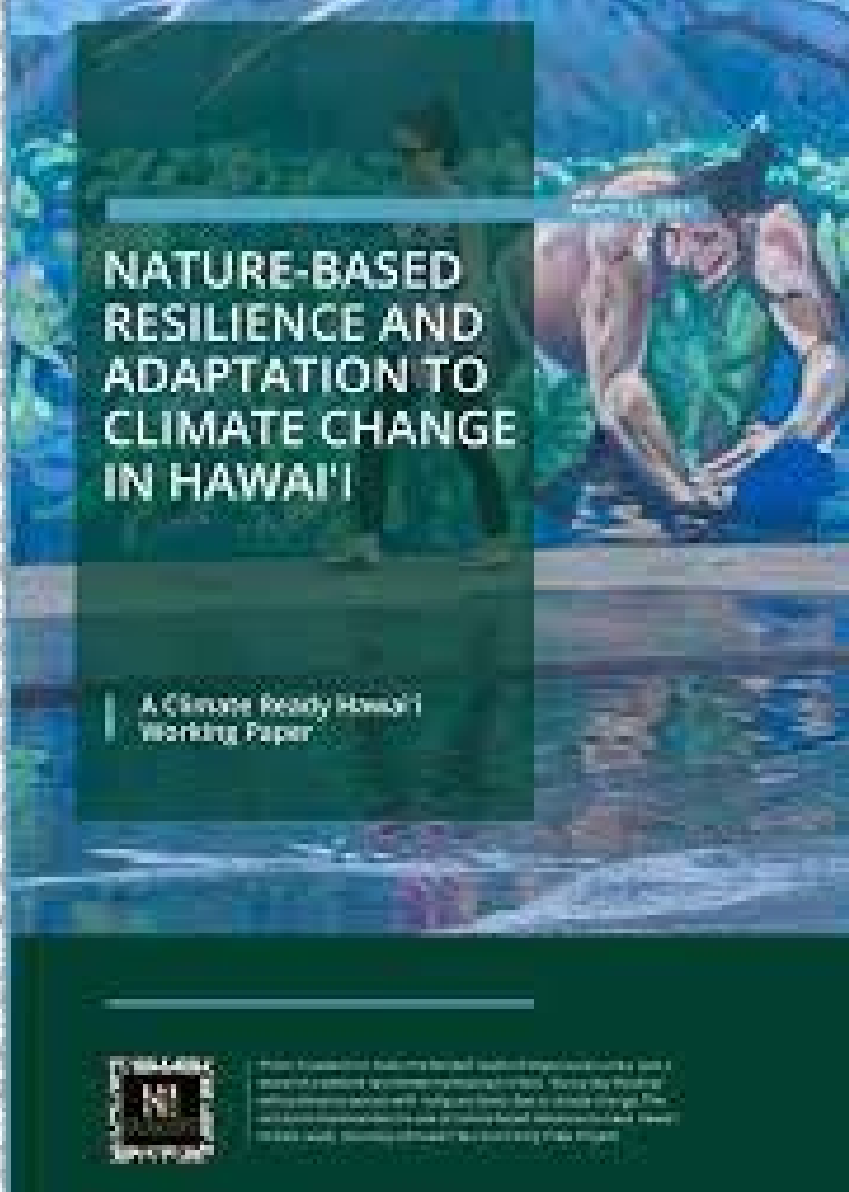


Carbon Dioxide Emissions & Climate Change

- *Presentation by Dr. Charles "Chip" Fletcher, Interim Dean of the School of Ocean and Earth Science and Technology (SOEST) and Professor, Department of Geology and Geophysics, UH Mānoa.*
- *Dr. Fletcher's research and teaching focus on Climate Change, Coastal Community Resiliency, and Natural Coastal Systems.*
- *The results of his work are used by government agencies for administering coastal policy, establishing construction guidelines, and planning resilient infrastructure projects.*
- *Presentation will be followed by Q&A.*



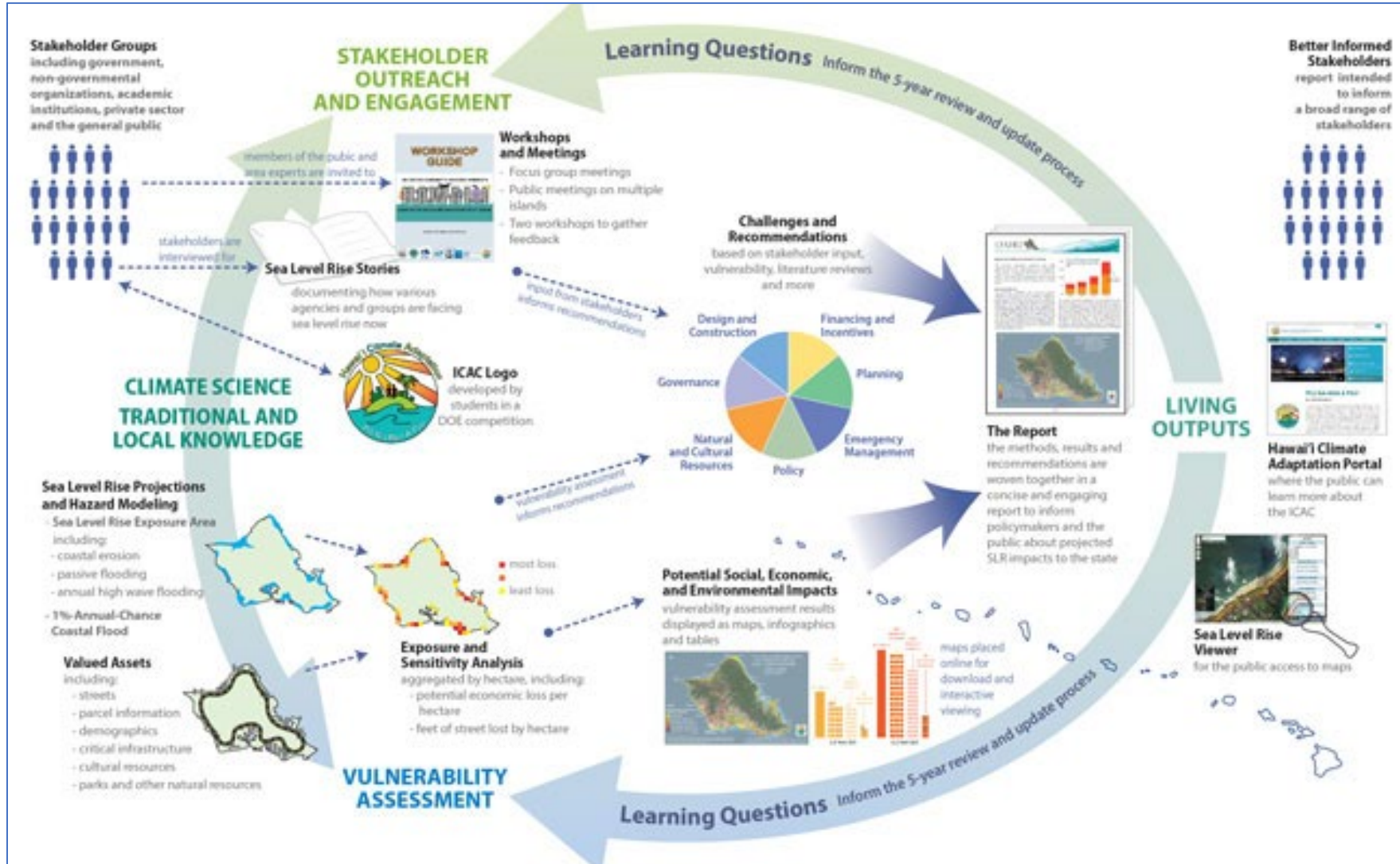
State-Level Initiatives





State-Level Initiatives

Climate Ready Hawai'i / UH Social and Climate Vulnerability Framework



State of Hawai'i climate change-related land use initiatives

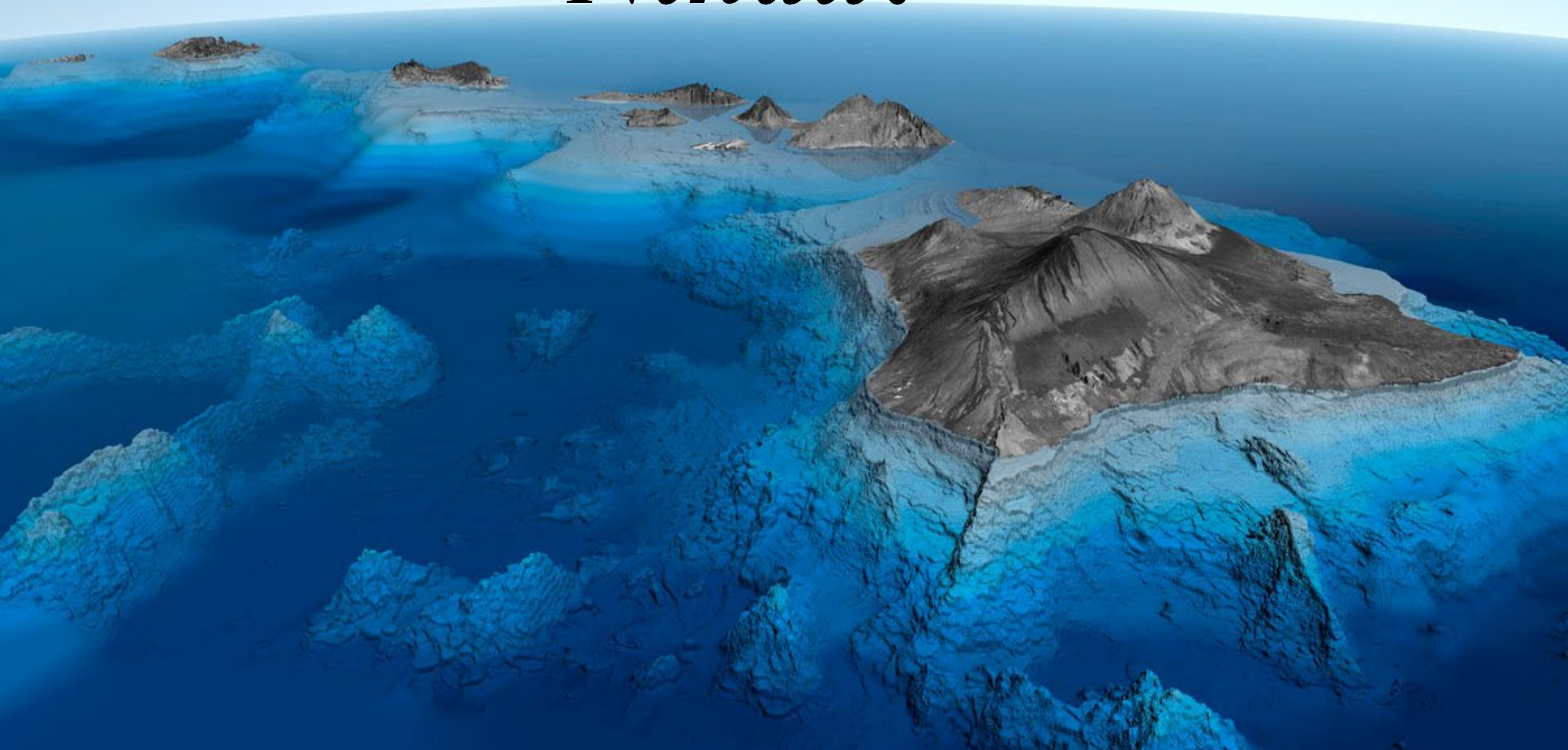
- *Presentation by Leah Laramée, Natural Resource Planner, Department of Land and Natural Resources, Division of Forestry and Wildlife (DLNR-DoFAW).*
- *Leah is the Hawaii State Liaison for the US Climate Alliance - Natural and Working Lands Team*
- *Works on nature-based resilience and adaptation to climate change in Hawai'i on natural and working lands.*
- *Lead for the State's 100,000,000 tree pledge and DLNR's carbon certification projects.*
- *Presentation will be followed by Q&A.*



Next Steps

- Continue to **update the HHC** on the latest climate change information on a regular basis, with assistance from subject matter experts.
- Continue to **include climate change-related policies** in the General Plan update process, then implement via the Island Plan updates.
- Planning Office will consider **developing a DHHL Climate Action Plan.**
- **Schedule cross-training** on climate change and community resilience planning for the Planning Office, Land Management, and Land Development Division staff.
- Continue to include considerations of sea level rise, climate change and hazard vulnerability in the **criteria for evaluating land exchanges and acquisitions.**
- Conduct a **workshop for the HHC** in Spring 2022 to generate recommendations and direction on prioritization of DHHL climate change mitigation and adaptation efforts and community resilience planning.
- Conduct a **Community Resilience and Capacity Building** planning process for Molokai's coastal homestead communities starting in Summer 2022.

Nīnau?





Mahalo!



DEPARTMENT OF HAWAIIAN HOME LANDS

www.dhhl.hawaii.gov