



HAWAIIAN HOME LANDS

HAWAIIAN HOMES COMMISSION · DEPARTMENT OF HAWAIIAN HOME LANDS

G-2

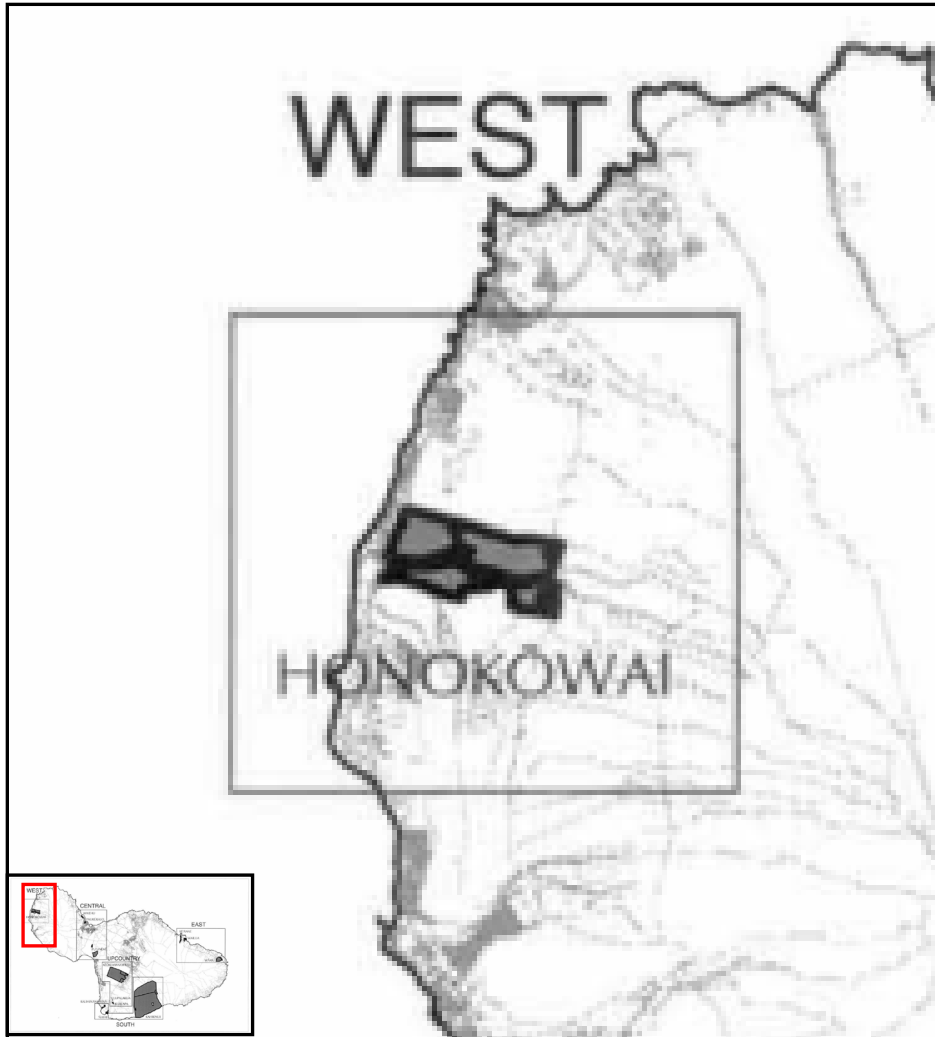
Maui Island Plan Amendment to Land Use Designations

March 19-20 2022

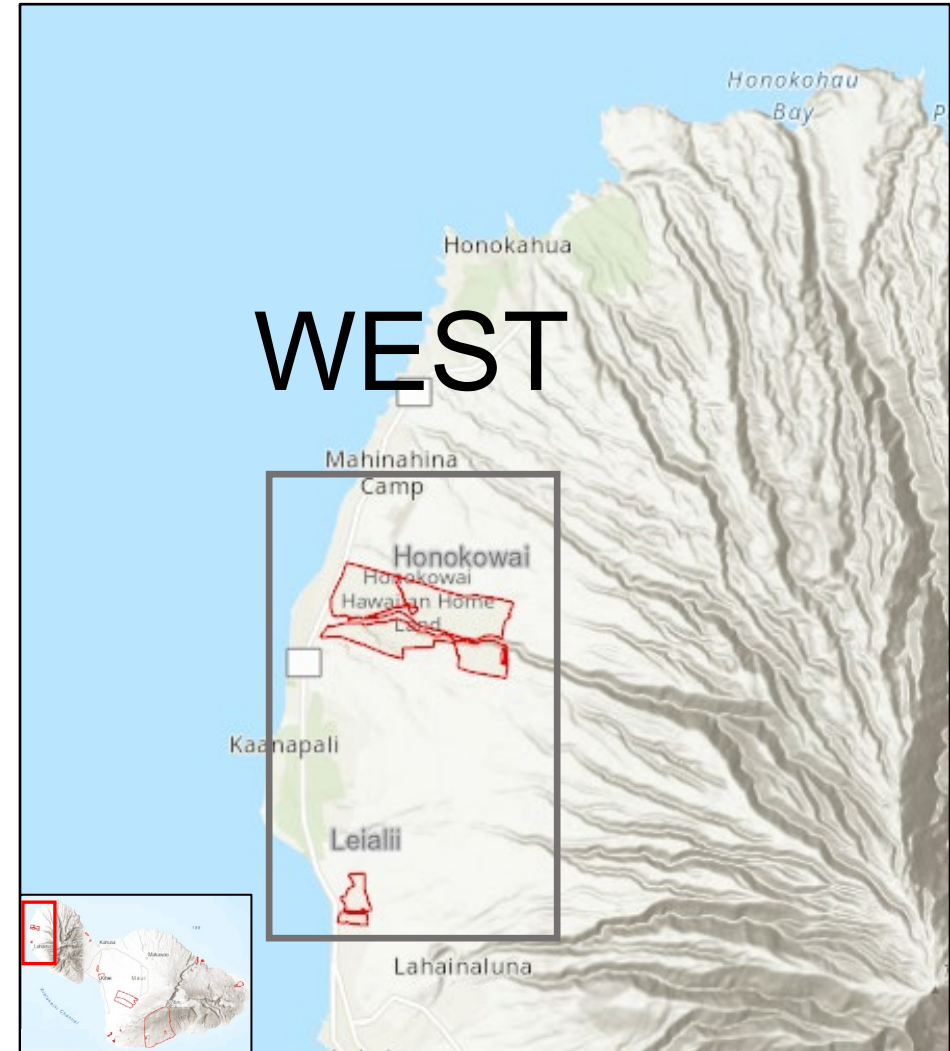


Maui Island Plan- West Maui Region

2004 Land Inventory



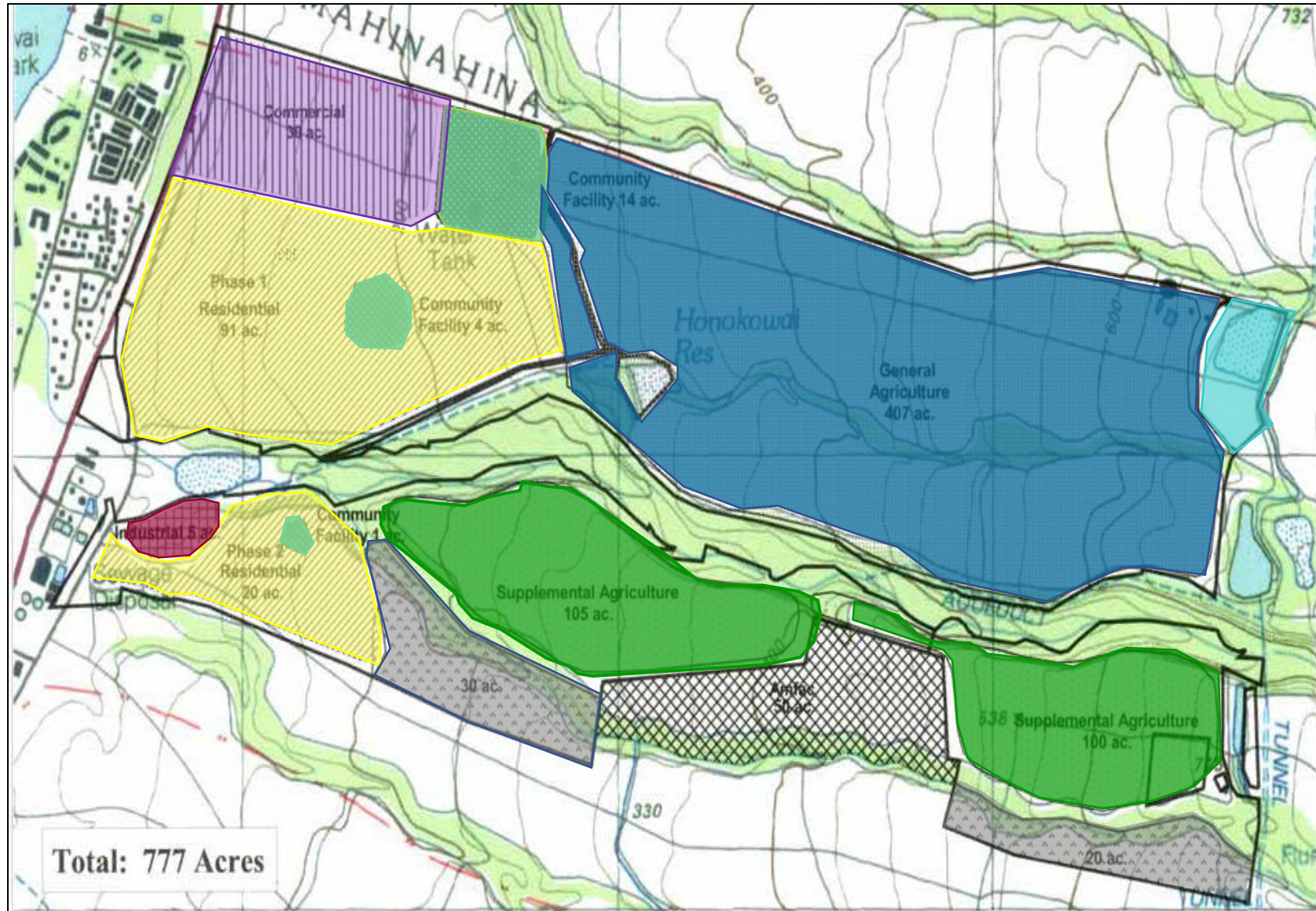
Current Land Inventory



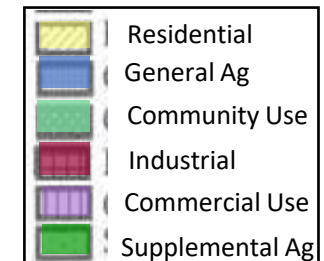


Maui Island Plan- Honokōwai- Existing

Current Land Use Designations



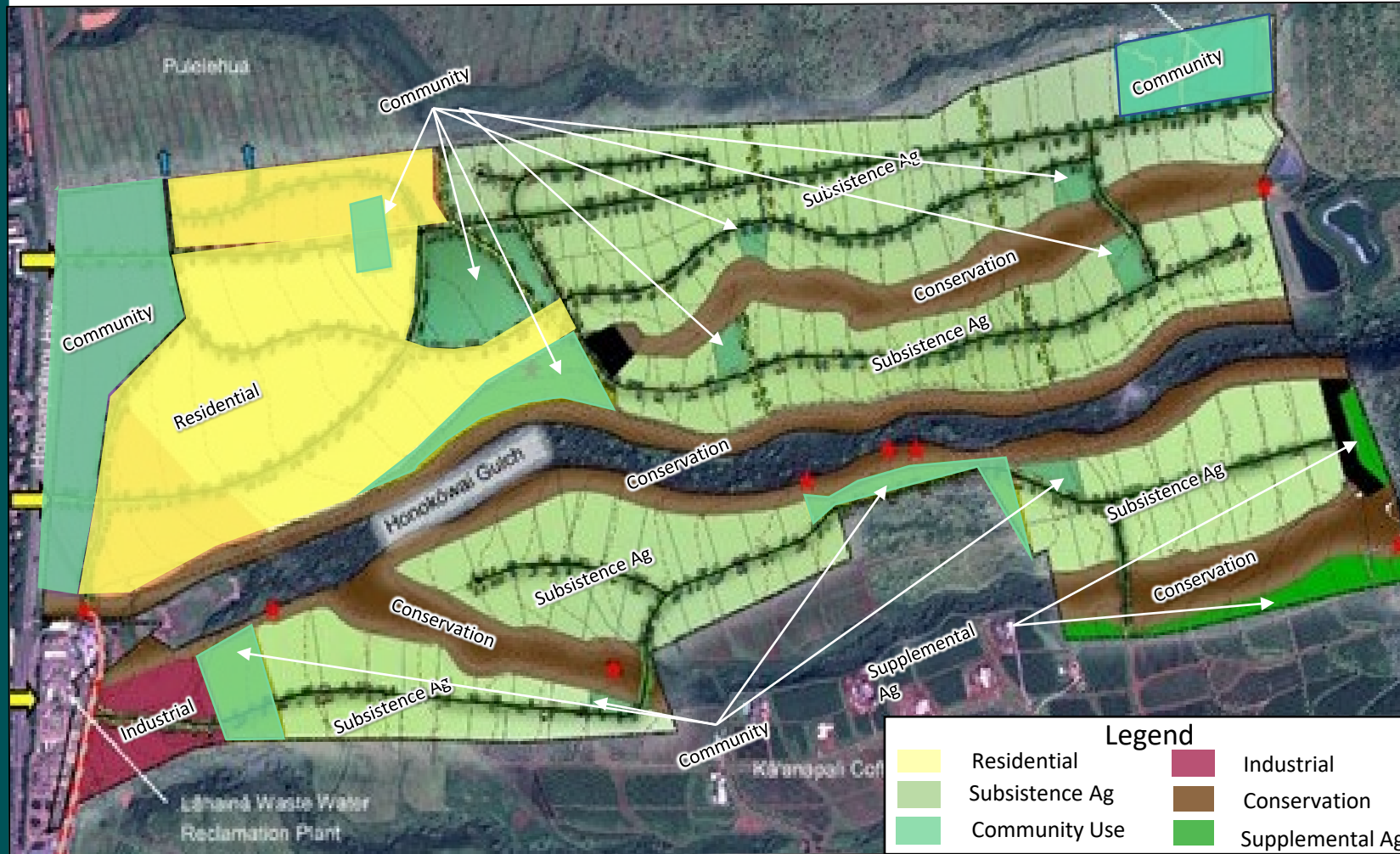
Land Use Designation	Land Use Acres
Residential	111
General Agriculture	407
Community Use	19
Industrial	5
Commercial Use	30
Supplemental Agriculture	205
Total Acreage	777





Maui Island Plan- Honokōwai- Proposed

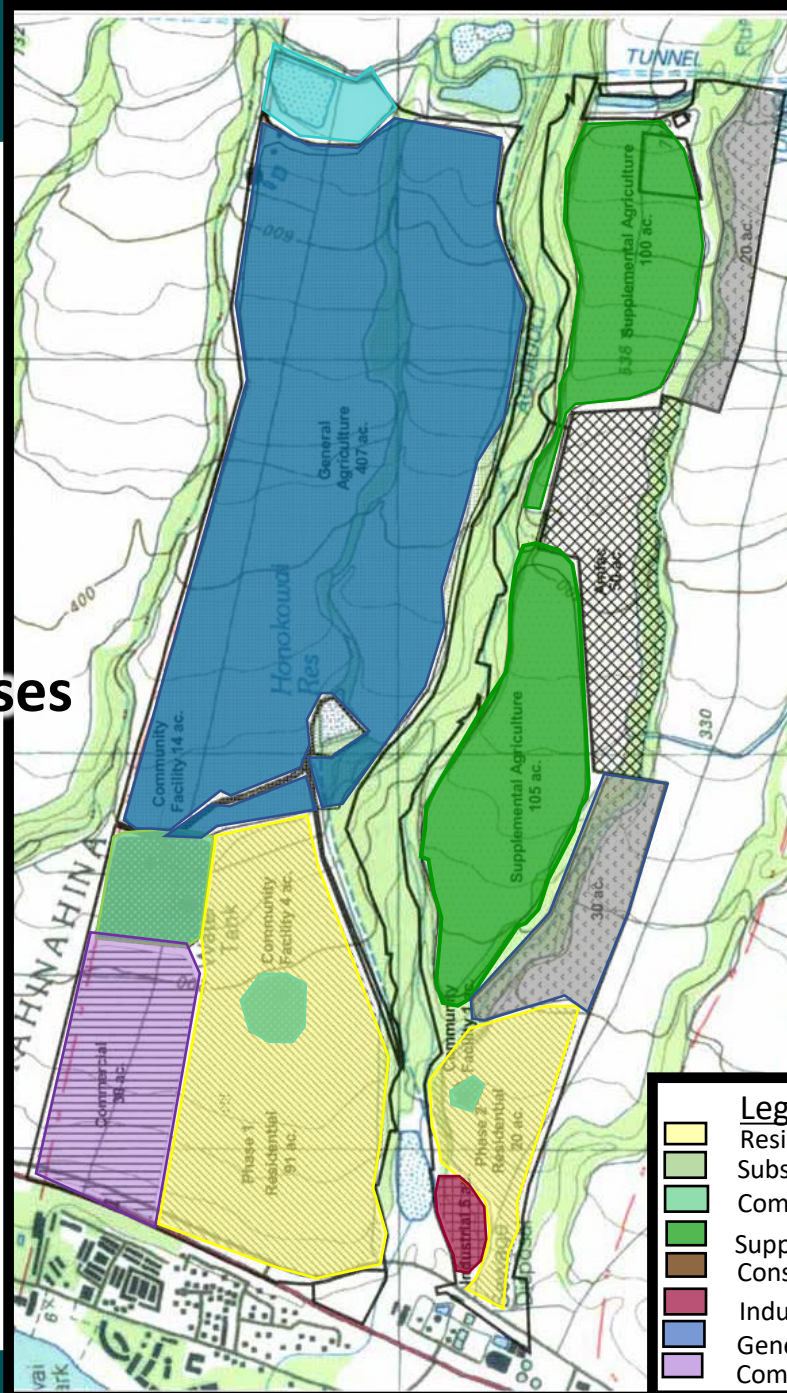
Proposed Changes to Land Use Designations



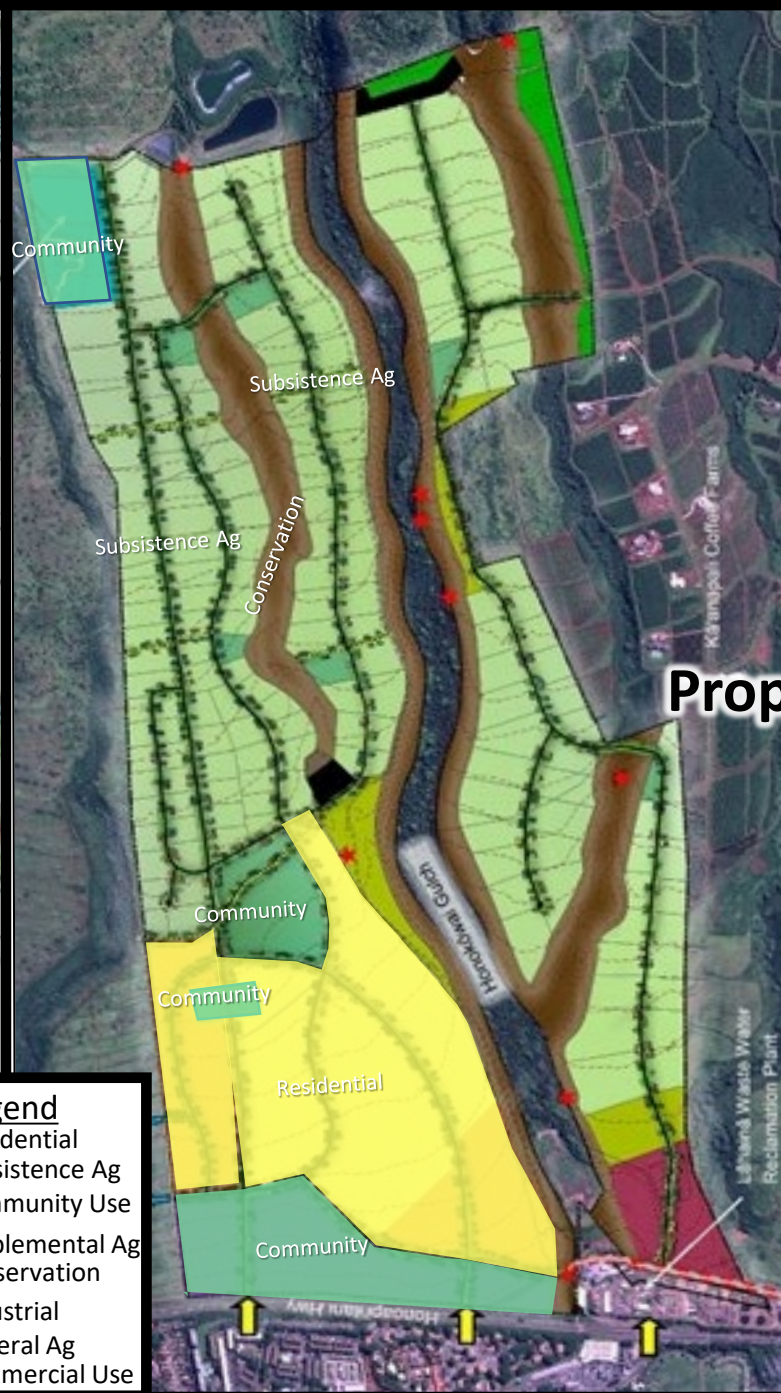
Land Use Designation	Available for Homestead Use	Current Maui Island Plan (2004) Acres	Proposed Acres Total by Designation
Subsistence Agriculture	Yes	0	342
Residential	Yes	111	112
Supplemental Agriculture	Yes	205	14
Community Use	No	19	89
Commercial Use	No	30	0
Conservation	No	0	146
Industrial	No	5	16
General Agriculture	No	407	0
Total Acreage		777	777



Current Land Uses



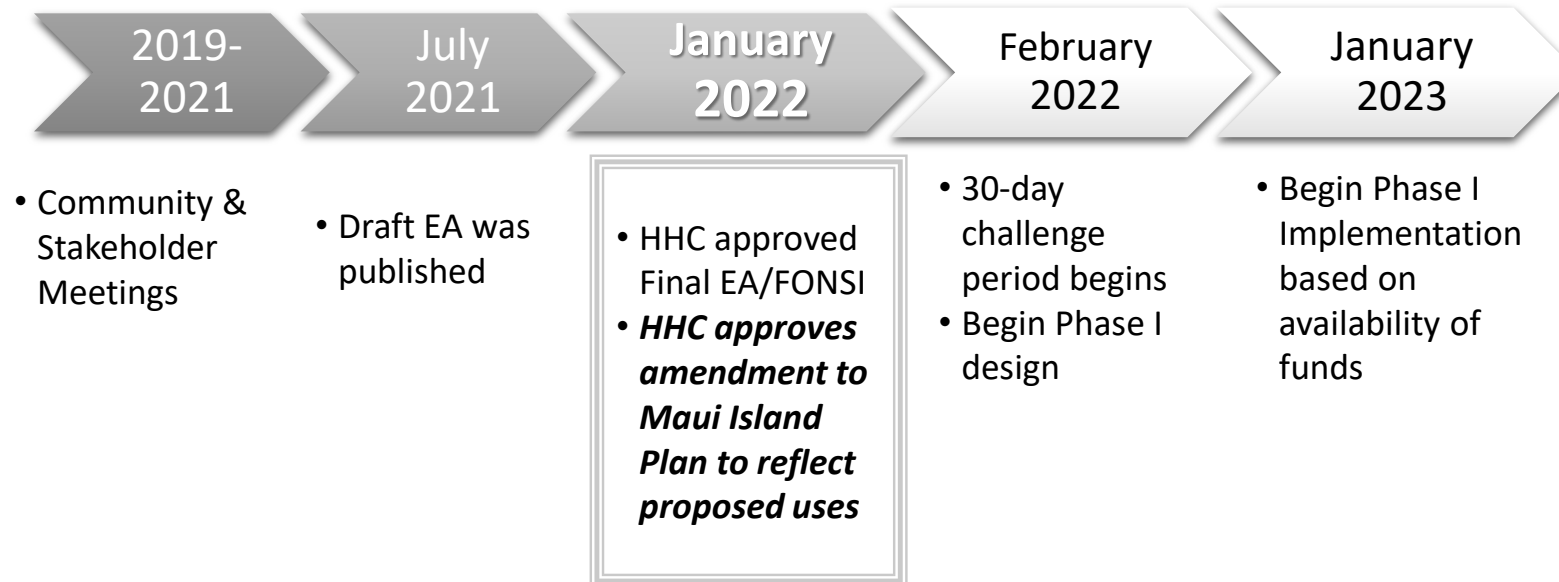
Proposed Land Uses





Schedule Milestones

Honokōwai Master Plan





Mahalo



DEPARTMENT OF HAWAIIAN HOME LANDS

www.dhhl.hawaii.gov