



HAWAIIAN HOME LANDS

HAWAIIAN HOMES COMMISSION · DEPARTMENT OF HAWAIIAN HOME LANDS

G-2

STATUS UPDATE - PLAN IMPLEMENTATION IN THE WAI'ANAE MOKU, ISLAND OF O'AHU

December 19 – 20, 2021



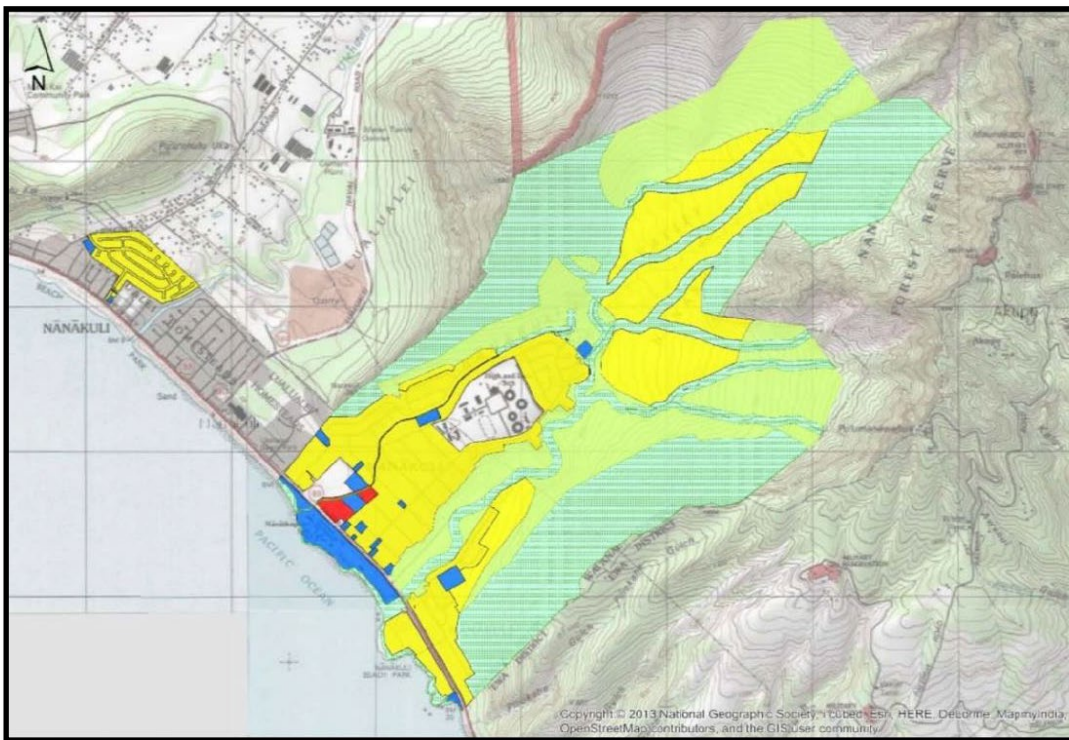
DHHL Planning System

DHHL Planning System

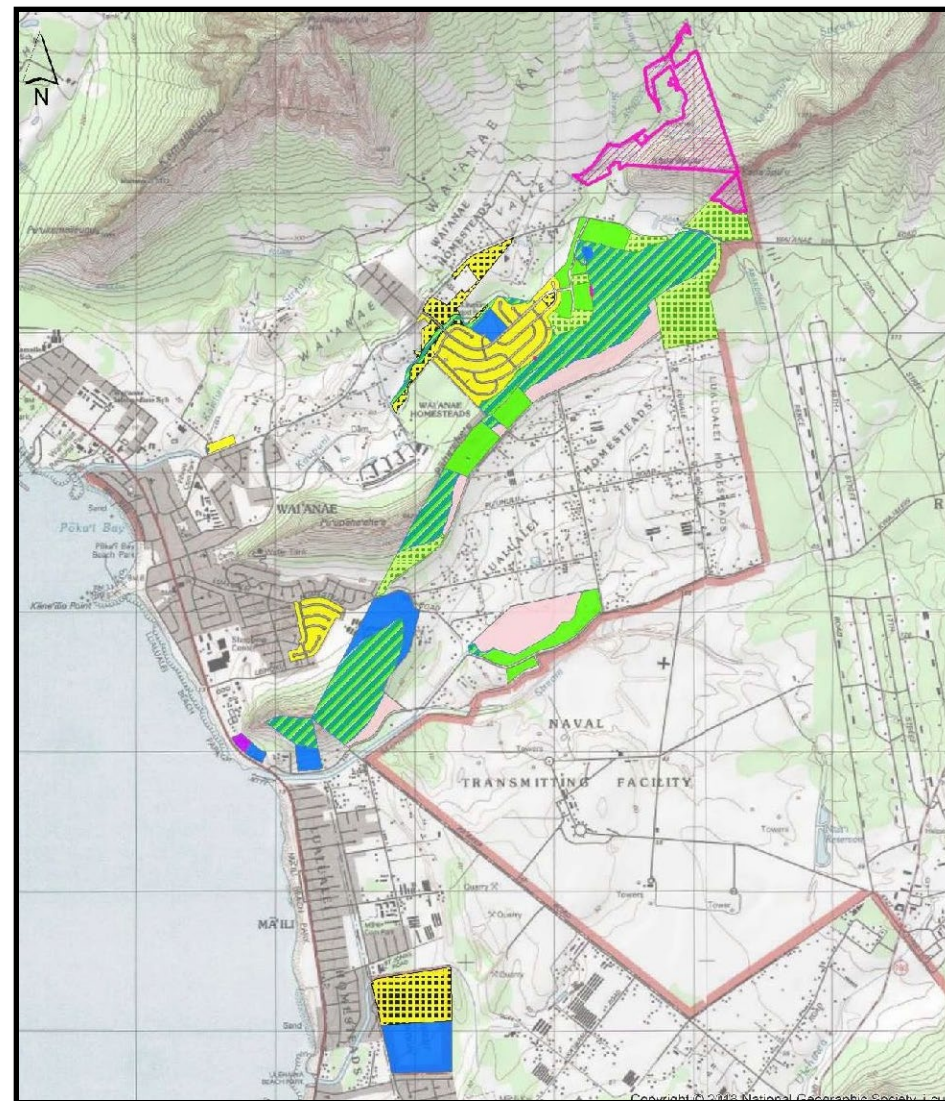




DHHL Landholdings: Wai‘anae Moku, O‘ahu



Nānākuli



Wai‘anae and Lualualei



DHHL Landholdings: Wai‘anae Moku, O‘ahu

Land Use Designation (LUD)	Wai‘anae	Lualualei	Nānākuli	Total Acres	Percent of LUD in Wai‘anae	Percent of LUD on O‘ahu
Special District	95	10		105	3%	42%
Conservation	75	190	825	1,090	32%	42%
General Agriculture		95	705	800	24%	88%
Residential	130	125	745	1,000	30%	61%
Pastoral	-	-	-	-	-	-
Subsistence Agriculture	50	140		190	6%	86%
Supplemental Agriculture	-	-	-	-	-	-
Industrial	-	3	-	3	0.8%	0.4%
Community Use	10	75	55	140	4%	45%
Commercial	-	-	10	10	.2%	11%
TOTALS	360	638	2,340	3,338	100%	50%



O'ahu Island Plan: Wai'anae Projects



Mā'ili Homestead Community Residential Plans

- Property: 40 acres, former Voice of America Site
- Alternative 1: 200 single-family homes
- Alternative 2: 330 single-family & multi-family homes
- June 22, 2021: Beneficiary Consultation #1
- Early 2022: Draft Environmental Assessment



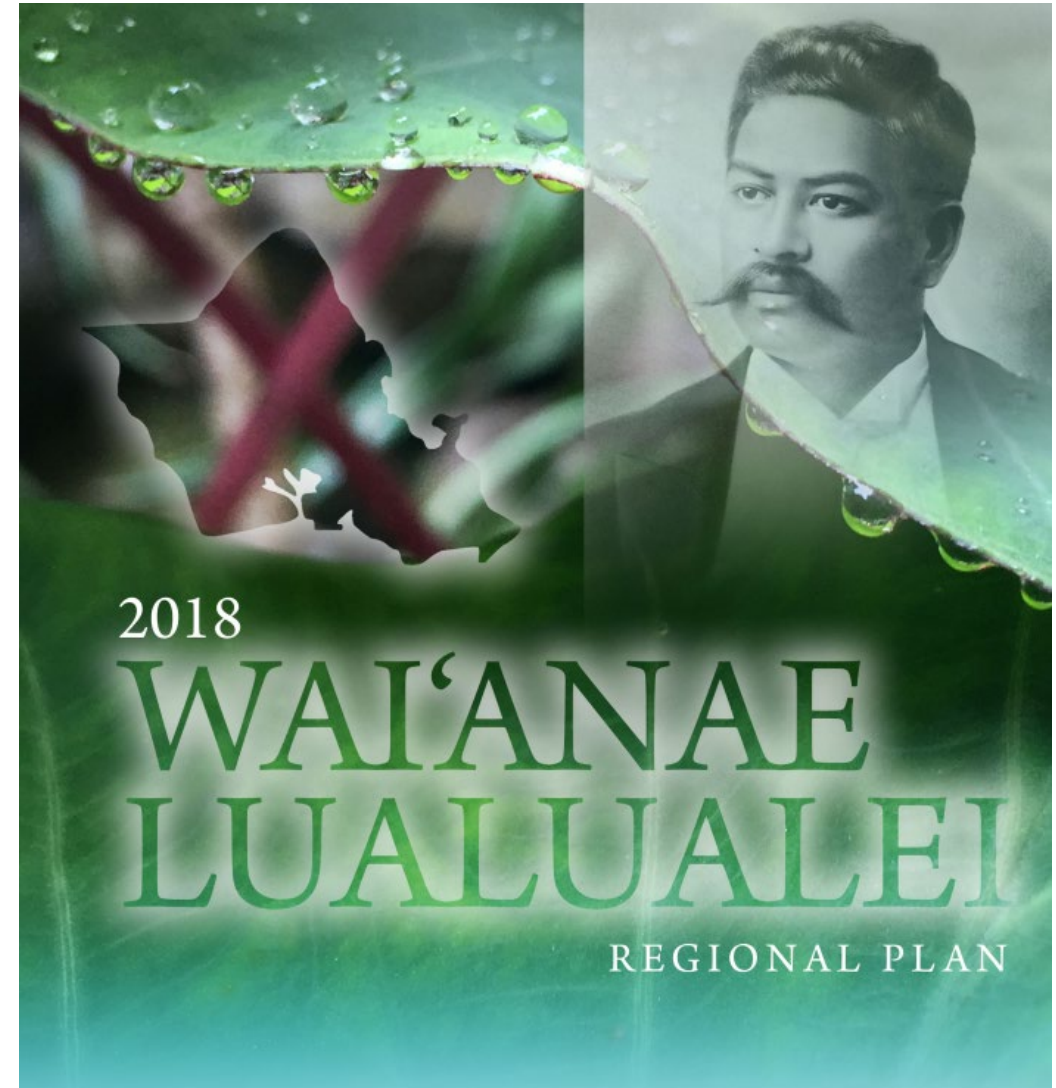
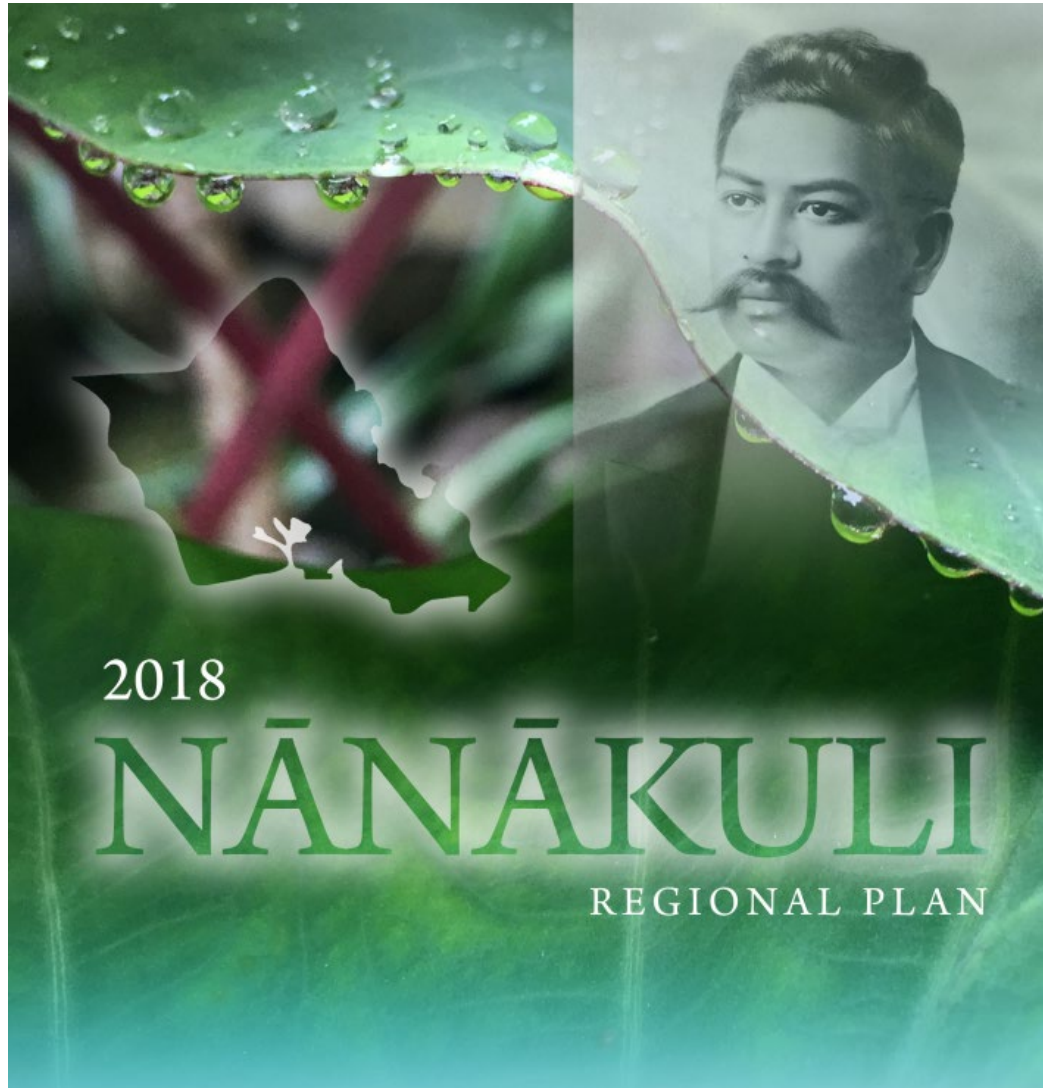
Nānākuli Solar Project

Community Based Renewable Energy: Nānākuli

- August 2020: HHC authorizes Chairman to solicit interested developers
- August 2020:DHHL Publishes Request for Proposals (Nānākuli, Moloka`i, Kawaihae, Kona)
- October to December 2020: Beneficiary Info. Meetings (Nānākuli, Moloka`i, Kawaihae)
- Developer ICAST (International Center for Appropriate Sustainable Technology) selected for Nānākuli
- April to November 2021: ICAST due diligence studies
- ICAST Conclusion: Project is infeasible
- November 2021: DHHL acknowledges ICAST withdrawal from project



Nānākuli & Wai`anae Regional Plans





Nānākuli Regional Plan

PRIORITY PROJECTS:

1. Disaster Preparedness
2. Improve Community Access to Non-Homesteading Areas
3. Street Repairs and Improvements for Health and Safety in the region
4. Establish Community-Based Education Programs
5. Identify and Pursue Opportunities for “Pono Economic Development” and Community Action



Nānākuli Regional Plan

1. The Nānākuli Regional Plan (July 2018)

Priority Project	Current Status
<p>A. Disaster Preparedness</p>	<p>The State Department of Transportation (DOT), Highways Division, completed the Farrington Highway Corridor Study in March 2021. The corridor study identified interim measures to keep Farrington Highway functioning acceptably while the long-term plans to widen Farrington Highway is completed (estimated completion date 2035).</p>
<p>B. Improve Community Access to Non-Homesteading Areas</p>	<p>A blessing for the Nānākuli Village Center was held in November 2019.</p> <p>On April 27, 2021, Kamehameha Schools opened the Kalanihookaha Community Learning Center, that will provide ‘āina-based programs, career development and training.</p> <p>The Nānākuli Village Center is a joint effort of the Nānākuli Hawaiian Homestead Community Association and the Hawaiian Community Development Board.</p> <p>DHHL also initiating repairs to the Nānākuli Cemetery. See HHC Agenda Item E-1 for more information.</p>
<p>C. Street Repairs and Improvements for Health and</p>	<p>DHHL continues to work with the City & County of Honolulu (City) to assume responsibility for proper roadway maintenance and improvement within homesteads. DHHL Nānākuli Traffic Calming Project in progress. See HHC Agenda Item E-1 for more info.</p>
<p>D. Establish Community-Based Education Programs</p>	<p>Community led initiatives are ongoing.</p>
<p>E. Identify and Pursue Opportunities for “Pono “Economic Development” and Community Action</p>	<p>Community led initiatives are ongoing.</p>



Wai‘anae & Lualualei Regional Plan

PRIORITY PROJECTS:

1. Increase Capacity for Specific Community-Based Projects
2. Improve Community Access to Non-Homesteading Areas
3. Homestead Infrastructure & Maintenance
4. Safety & Community Enforcement
5. Disaster Preparedness & Coordination



Wai‘anae & Lualualei Regional Plan

Wai‘anae and Lualualei Regional Plan (December 2018)

Priority Project	Current Status
Increase Capacity for Specific Community-Based Projects	<p>Community led initiatives are ongoing.</p> <p>DHHL offering capacity building grants for associations in its FY 22 Grant solicitation</p>
Improve Community Access to Non-Homesteading Areas	<p>Community led initiatives are ongoing.</p>
Homestead Infrastructure & Maintenance	<p>DHHL continues to work with the City & County of Honolulu (City) to assume responsibility for proper roadway maintenance and improvement within homesteads. DHHL coordinates recurring meetings with the City to help keep the focus on collaboration, aligning priorities and addressing issues.</p> <p>DHHL working on West O`ahu Sewer System Improvements. See HHC Agenda Item E-1 for more information.</p>
Safety & Community Enforcement	<p>Community led initiatives are ongoing.</p>
Disaster Preparedness & Coordination	<p>The State DOT Highways Division completed the Farrington Highway Corridor Study in March 2021. The corridor study identified interim measures to keep Farrington Highway functioning acceptably while the long-term plans to widen Farrington Highway is completed (estimated date 2035).</p> <p>DHHL coordinating WCEAR. See HHC Agenda Item E-1 for more information.</p>



Mahalo



DEPARTMENT OF HAWAIIAN HOME LANDS

www.dhhl.hawaii.gov