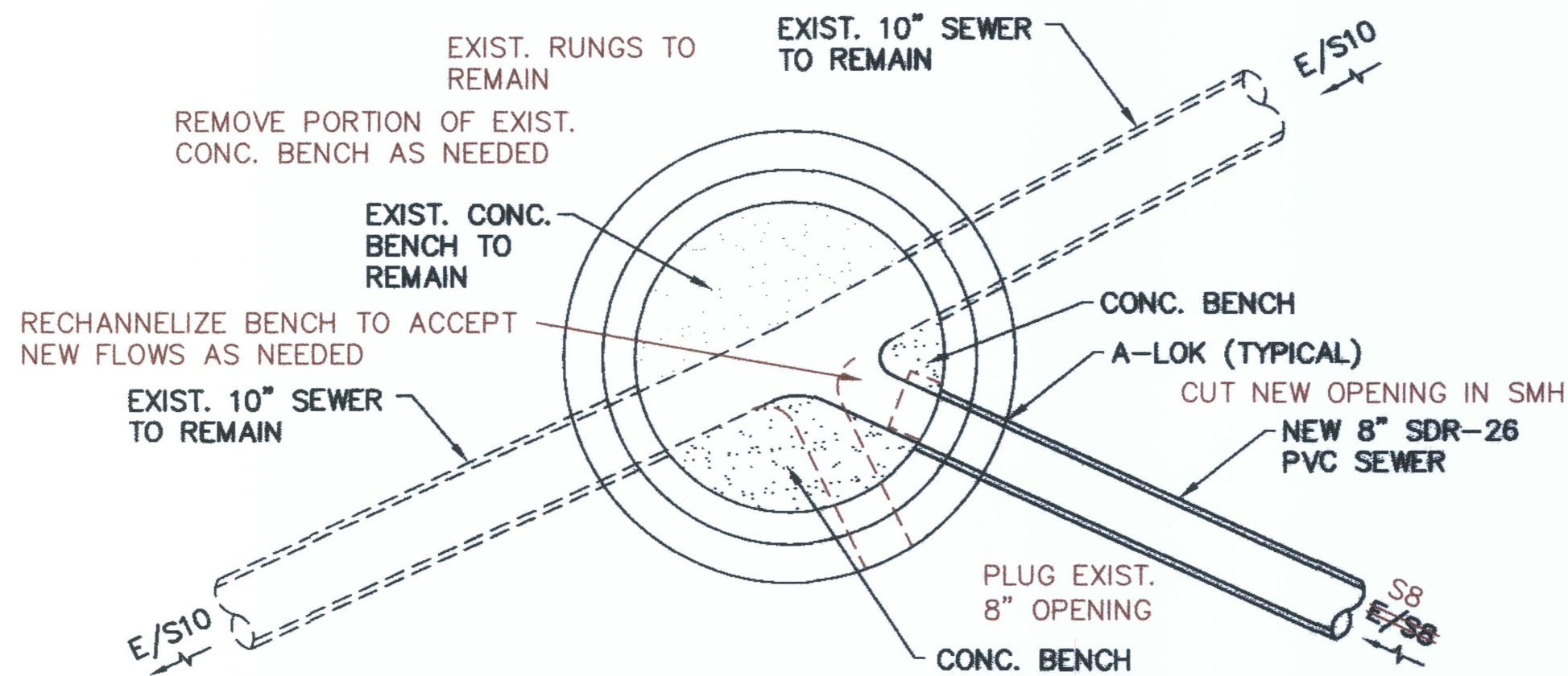


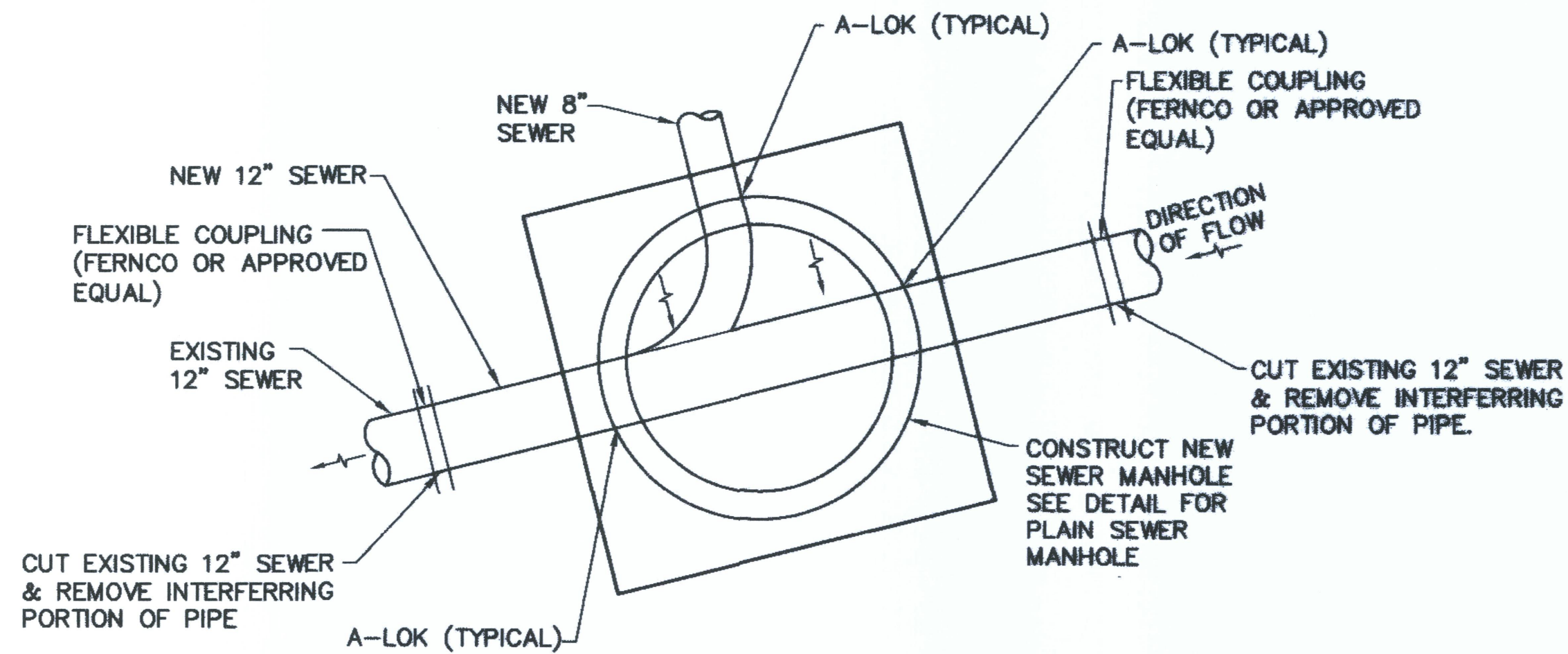
AS-BUILT



Last Save by: JCT  
Last Saved: 4/20/2009  
Plotted on: 4/20/2009  
G:\DHHL0402\ACAD\PCD1\DHHL04244\_ST\FCD1.DWG



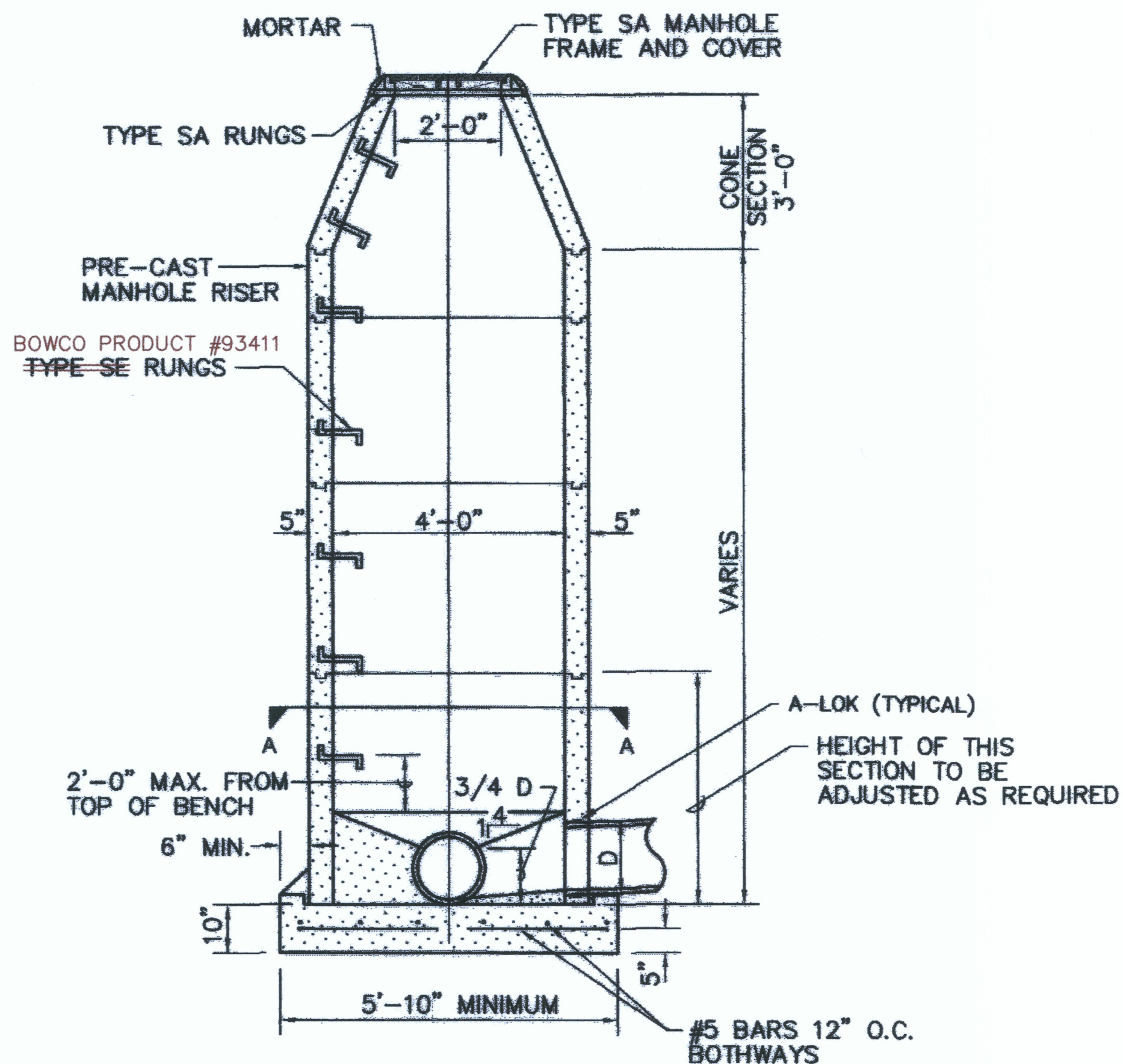
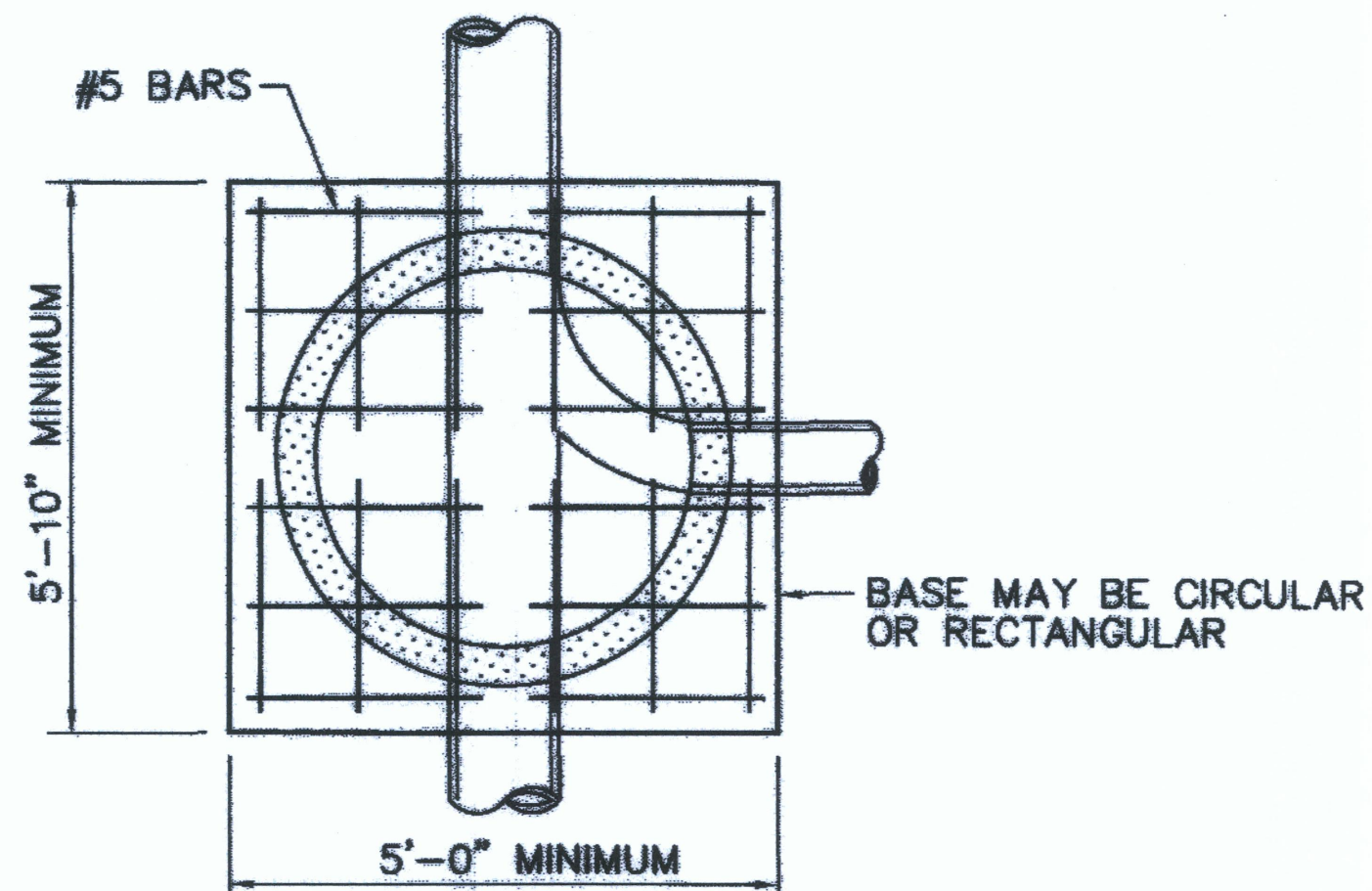
1  
34 RECHANNELIZE EXIST. SMH  
AT KEALAKEHE PARKWAY  
SCALE: 1/2" = 1'-0"



NOTES:

1. BYPASS EXISTING SEWER LINE AT UPSTREAM MANHOLE OF PROPOSED SMH #B1 TO MANHOLE DOWNSTREAM OF PROPOSED SMH #B1.
2. CUT INTO PIPE AT LOCATION OF NEW MANHOLE SMH #B1 AND REMOVE INTERFERRING PORTION OF PIPE.
3. CONSTRUCT NEW MANHOLE SMH #B1.
4. JOIN NEW 12" SEWER PIPE TO EXISTING 12" SEWER PIPE WITH FERNCO COUPLING (OR APPROVED EQUAL).

2  
34 NEW SMH AT EXISTING 12" SEWER AT  
PUOHULIHULI STREET  
SCALE: 1/2" = 1'-0"

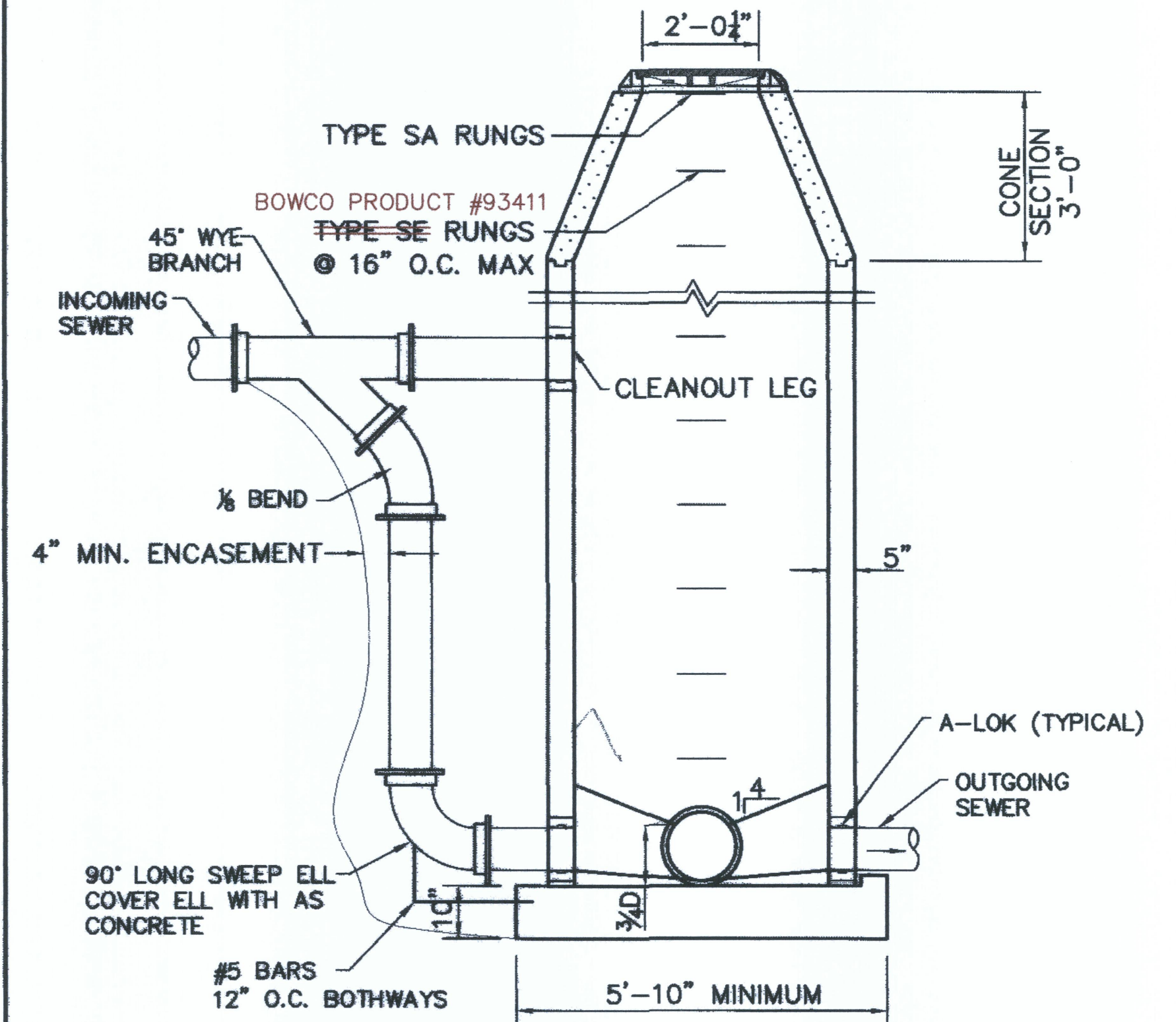


NOTE:

UNLESS OTHERWISE APPROVED OR NOTED, ALL MANHOLES SHALL BE PROVIDED "ECCENTRIC" CONE SECTIONS WITH TYPE SA FRAMES AND COVERS (STD. DETAIL S-22).

ALL MANHOLES LESS THAN 5'-0" DEEP SHALL BE PROVIDED 22-INCH "CONCENTRIC" CONE SECTIONS WITH TYPE SB FRAMES AND COVERS (STD. DETAIL S-21).

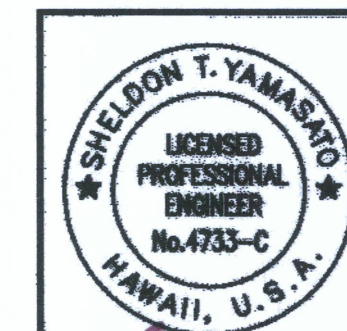
PLAIN SEWER MANHOLE  
SCALE: 1/2" = 1'-0"



SHALLOW DROP MANHOLE

APPROVED:

Diana Besh  
DIVISION CHIEF, DEPARTMENT OF ENVIRONMENTAL MANAGEMENT  
COUNTY OF HAWAII  
DATE 4/22/09



THIS WORK WAS PREPARED BY ME OR UNDER MY SUPERVISION AND CONSTRUCTION OF THIS PROJECT WILL BE UNDER MY OBSERVATION  
LICENSE EXPIRES 4/30/10

REVISION DATE	DESCRIPTION	MADE BY	APPROVED
DEPARTMENT OF HAWAIIAN HOME LANDS LA'IOPIA VILLAGE 5 TAX MAP KEY: (3) 7-4-21:6 KAILUA-KONA, NORTH KONA, HAWAII			
MISCELLANEOUS DETAILS			
Approved: _____ COUNTY ENGINEER, DPW, COUNTY OF HAWAII DATE _____			
AKINAKA & ASSOCIATES, LTD. CONSULTING ENGINEERS			
FILE	POCKET	FOLDER	NO.

AS-BUILT



TRUE NORTH  
SCALE: 1" = 40'

FOR WORK ALONG KEALAKEHE PARKWAY:

ALL PAVEMENT MARKING(S) DETERMINED TO BE  
DISTURBED BY THE HAWAII DISTRICT ENGINEER OR  
HIS REPRESENTATIVE, SHALL BE IMMEDIATELY  
REPLACED WITHOUT QUESTION AND AT NO COST  
TO THE STATE.

- 1 12" WHITE STOP LINE (TYP.)  
(THERMOPLASTIC EXTRUSION)
- 2 STANDARD PAV'T. ARROWS  
(THERMOPLASTIC EXTRUSION)
- 3 8" WHITE STRIPE  
(THERMOPLASTIC EXTRUSION)  
WITH TYPE "C" PAV'T. MARKERS  
⊙ 20' O.C.
- 4 TRANSVERSE MEDIAN MARKING:  
DOUBLE 4" YELLOW STRIPE  
(THERMOPLASTIC EXTRUSION) WITH  
TYPE H PAV'T. MARKERS ⊙ 20'  
O.C. & WITH 12" DIAGONAL  
STRIPING (THERMOPLASTIC  
EXTRUSION) ⊙ 20' O.C.
- 5 CONSTRUCT CURB RAMP PER DOT STD.  
SEE SHT 25A.
- 6 EXTENSION OF 4" WHITE EDGE LINE 2'  
STRIPE ⊙ 10' O.C. WITH TYPE "C"  
PAVEMENT MARKERS ⊙ 40' O.C.
- 7 ERADICATE EXIST. PAVEMENT  
MARKINGS
- 8 4" WHITE GUIDE LINE, SOLID
- 9 4" WHITE GUIDE LINES, 2' LONG WITH  
4' GAP (TYP.)
- 10 44" HT. "BIKE" & "LANE"  
PAVEMENT LETTERS
- 11 "STOP" PAVEMENT LETTERS
- 12 12" WHITE CROSSWALK STRIPING
- 13 STREET AND STOP SIGN

TRUE NORTH  
SCALE: 1" = 40'

MATCH LINE STA 8+00  
SEE ABOVE RIGHT


R3-8  
30" x 30"  
ON POST

## KEANALEHU STRIPING PLAN

SCALE: 1" = 40'

INSTALL

R3-8  
30" x 30"  
ON POST



ONLY

R3-8  
30" x 30"  
ON POST



THIS WORK WAS PREPARED  
ME OR UNDER MY SUPERV  
AND CONSTRUCTION OF  
PROJECT WILL BE UNDER  
OBSERVATION  
LICENSE EXPIRES 4/30/

REVISION DATE	DESCRIPTION	MADE BY	APPROVED
<p>DEPARTMENT OF HAWAIIAN HOME LANDS</p> <p>LA'I'OPUA VILLAGE 5</p> <p>TAX MAP KEY: (3) 7-4-21:6</p> <p>KAILUA-KONA, NORTH KONA, HAWAII</p>			
<p><b>KEANALEHU STRIPING PLAN</b></p>			
<p>Approved:</p>			
COUNTY ENGINEER, DPW, COUNTY OF HAWAII			DATE
<p>AKINAKA &amp; ASSOCIATES, LTD.</p> <p>CONSULTING ENGINEERS</p>			

**SUPERSEDED BY SHEET 35A** SHEET 35 OF 67 SHEETS

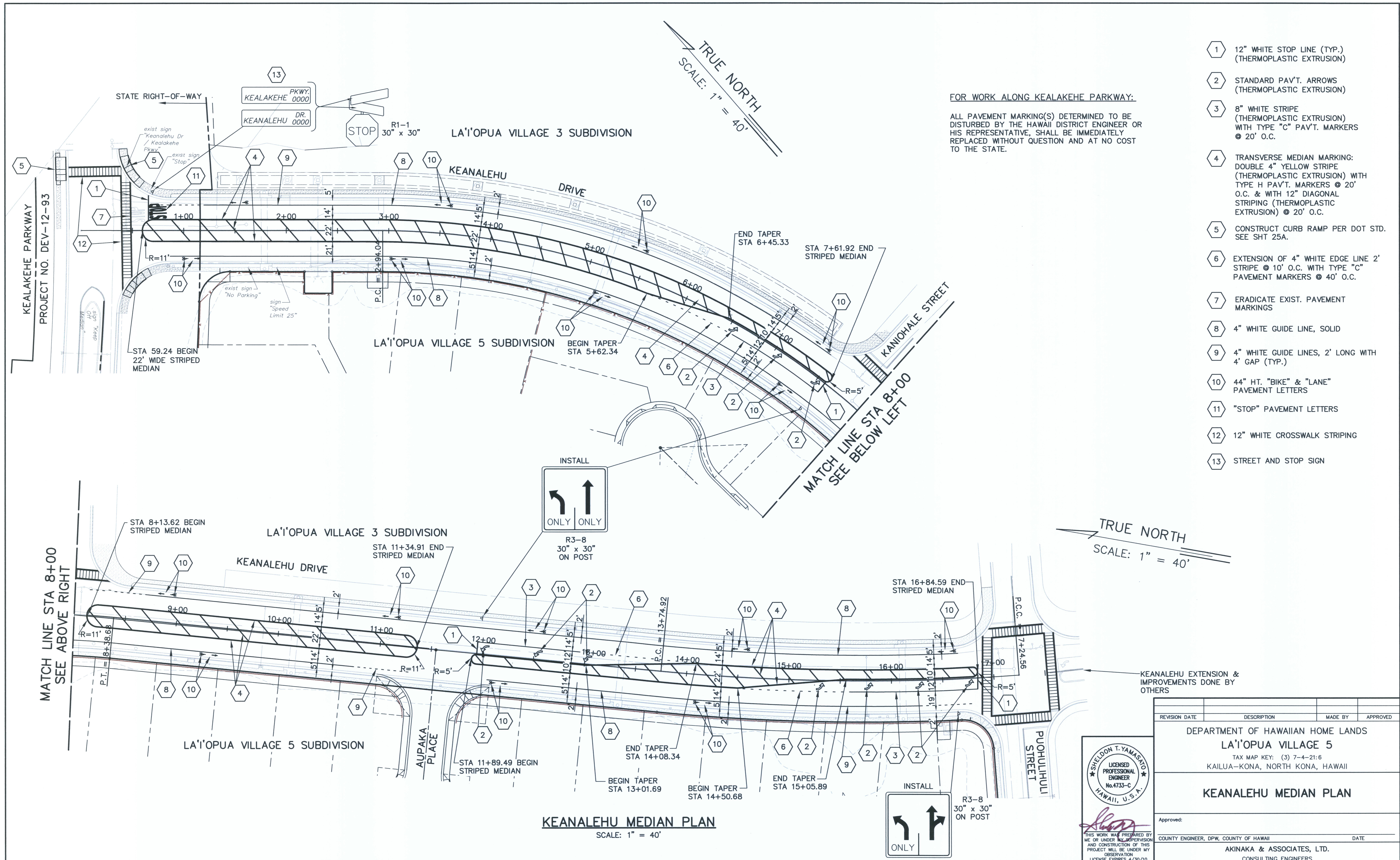
FILE	POCKET	FOLDER	NO.

G:\DHHL0402\ACAD\PCD1\DHL04238\_StrPCD1.DWG

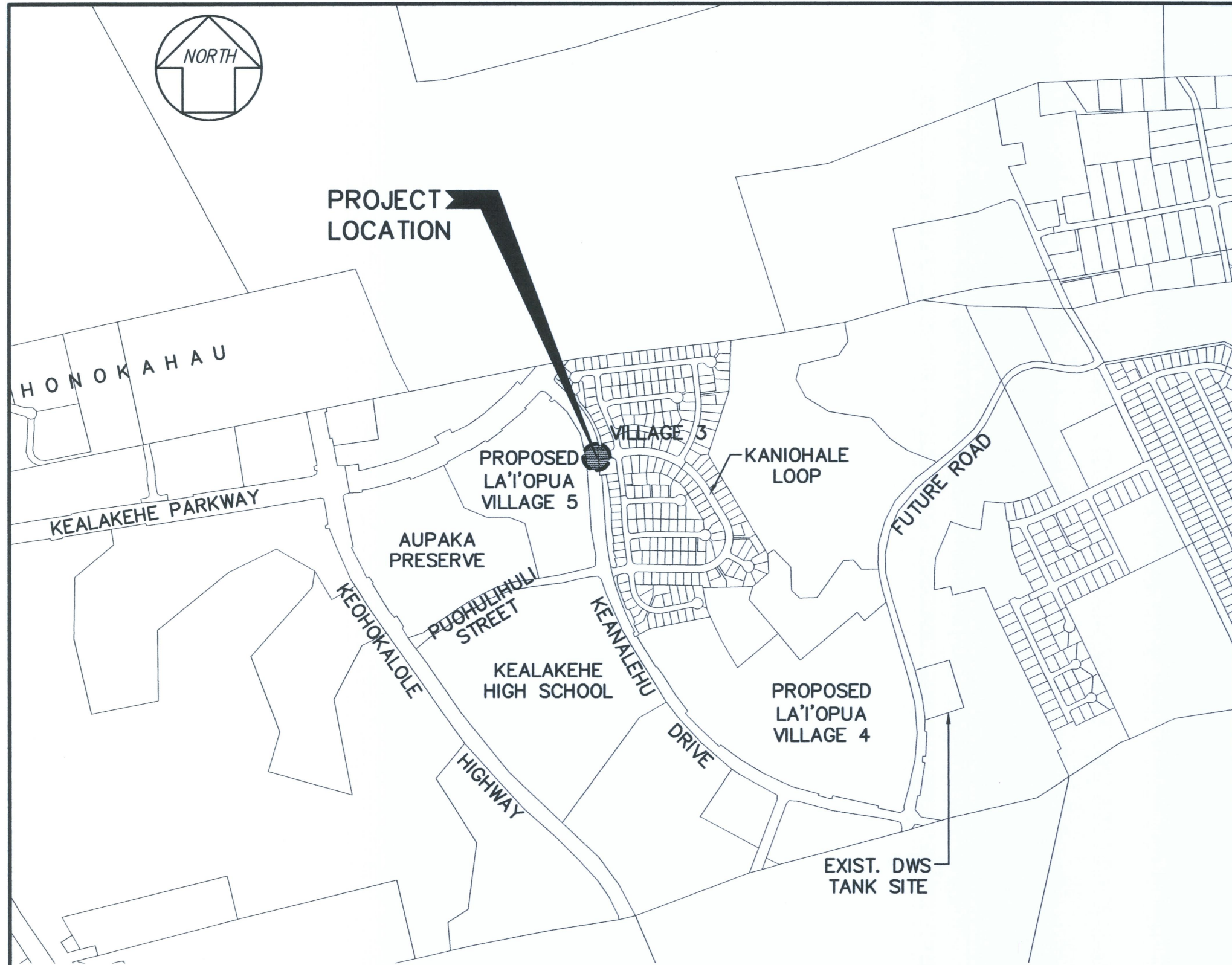
Last Save by: GMG  
Last Saved: 6/4/2012  
Plotted on: 6/4/2012



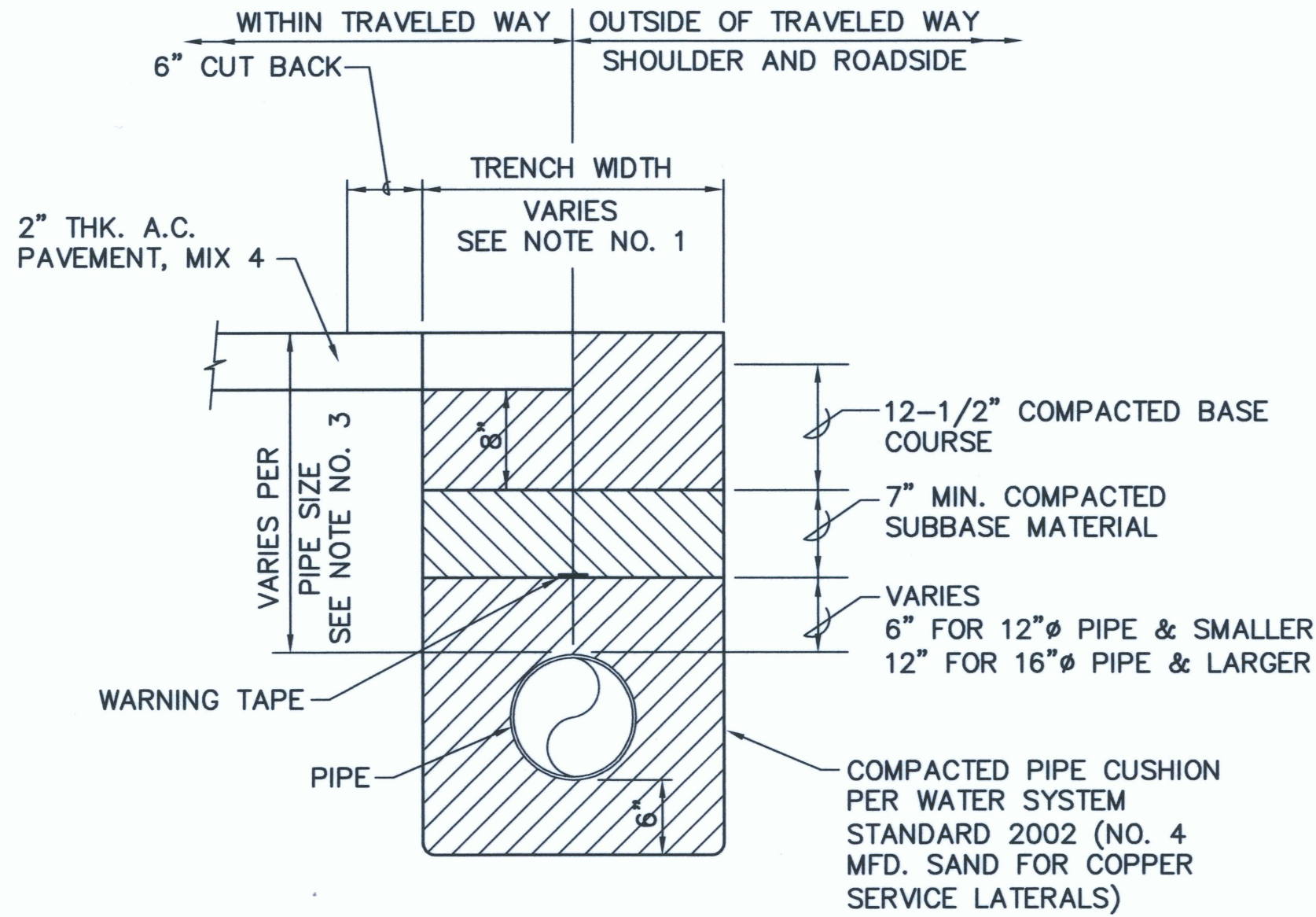
Last Save by: GMC  
Last Saved: 5/29/2012  
Plotted on: 5/29/2012  
G:\DHHL0402\ACAD\ASBUILT\DHHL04238\_STP-ASBUILT.DWG





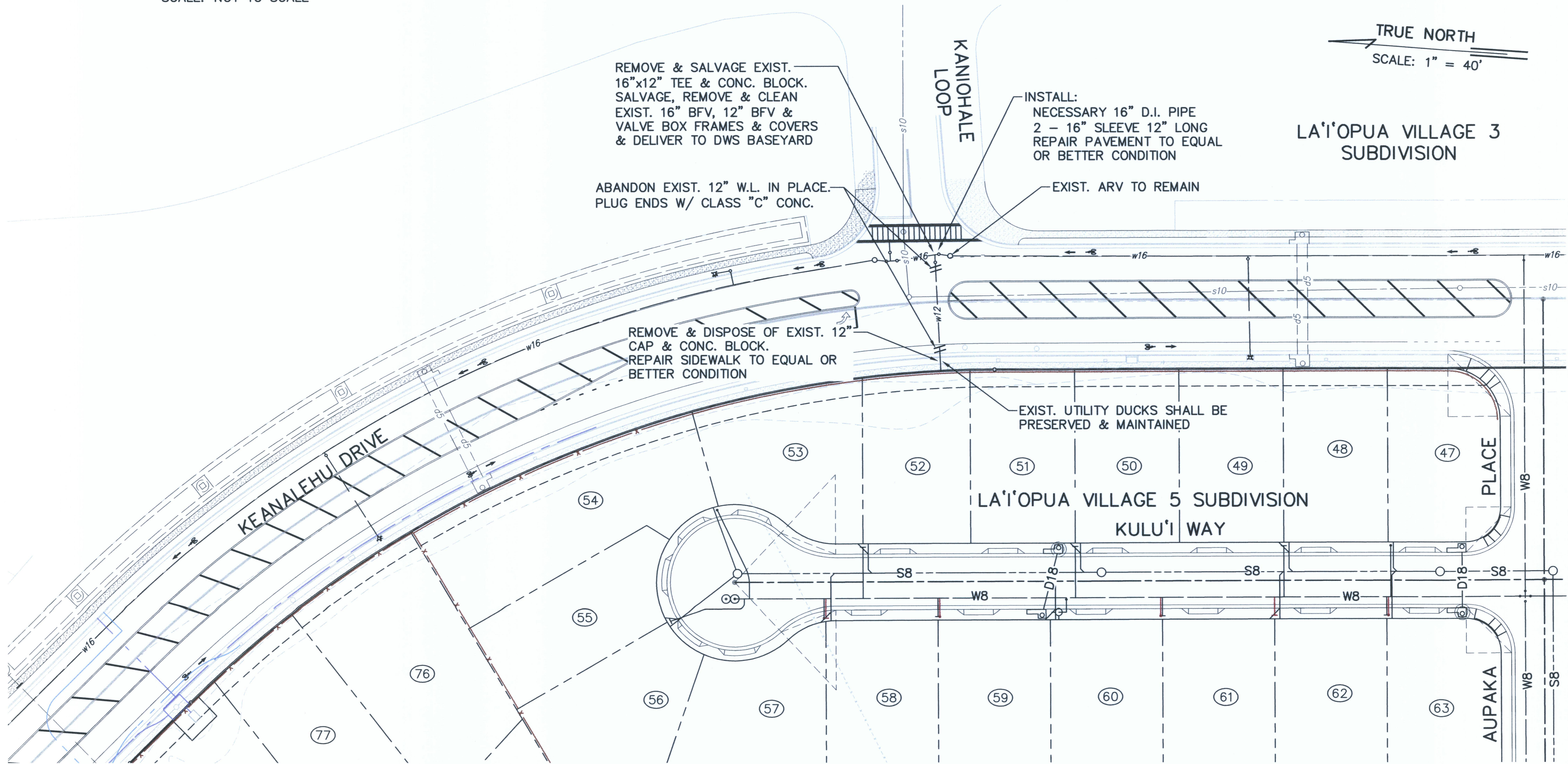


LOCATION MAP  
SCALE: NOT TO SCALE



- NOTES:
1. SEE TABLE 300-1, PAGE 302-3, WATER SYSTEM STANDARDS 2002.
  2. LOCAL MATERIAL MAY BE USED OUTSIDE SHOULDER AREA.
  3. SEE TABLE 100-3, PAGE 102-4, WATER SYSTEM STANDARDS 2002.

TYPICAL TRENCH AND PAVEMENT REPAIR SECTION  
SCALE: NTS



KEANALEHU DRIVE WATER IMPROVMENTS  
SCALE: 1" = 40'

LEGEND

	EXIST. WATER LINE
	NEW WATER LINE
	EXIST. DRAIN LINE
	NEW DRAIN LINE
	EXIST. UTILITY/ELECT. LINE
	EXIST. SEWER LINE
	NEW SEWER LINE
	DOUBLE SERVICE SEWER LATERAL
	SINGLE SERVICE SEWER LATERAL
	FIRE HYDRANT
	1-1/2" DOUBLE SERVICE WATER LATERAL WITH TYPE "B" CONNECTION FOR 2-5/8" METERS
	1" SINGLE SERVICE WATER LATERAL WITH TYPE "A" CONNECTION FOR ONE 5/8" METER
	LOT NUMBER
	SCALE: 1" = 40'



THIS WORK WAS PREPARED BY ME OR UNDER MY SUPERVISION AND CONSTRUCTION OF THIS PROJECT WILL BE UNDER MY OBSERVATION  
LICENSE EXPIRES 4/30/10

REVISION DATE	DESCRIPTION	MADE BY	APPROVED
DEPARTMENT OF HAWAIIAN HOME LANDS LA'I'OPUA VILLAGE 5 TAX MAP KEY: (3) 7-4-21:6 KAILUA-KONA, NORTH KONA, HAWAII			
KEANALEHU DRIVE WATER IMPROVEMENTS & WATER DETAILS			
Approved: _____ COUNTY ENGINEER, DPW, COUNTY OF HAWAII			
AKINAKA & ASSOCIATES, LTD. CONSULTING ENGINEERS			
FILE	POCKET	FOLDER	NO.

AS-BUILT



Last Save by: GMC  
Last Saved: 5/29/2012  
Plotted on: 5/29/2012  
G:\DHHL0402\ACAD\ASBUILT\DHHL04241\_STR-ASBUILT.DWG

FOR WORK ALONG KEALAKEHE PARKWAY:

THE AREA AND PLAN SHOWN IS SUFFICIENT TO CONTAIN ALL SEDIMENT FROM ENTERING ANY DRAINAGE STRUCTURE DOWN STREAM. THE CONTRACTOR SHALL TAKE ANY ADDITIONAL PRECAUTIONS TO GUARANTEE THAT SEDIMENT WILL NOT LEAVE THE AREA SHOWN.

MATCH LINE  
SEE RIGHT

EROSION & DUST CONTROL PLAN  
SCALE: 1" = 80'

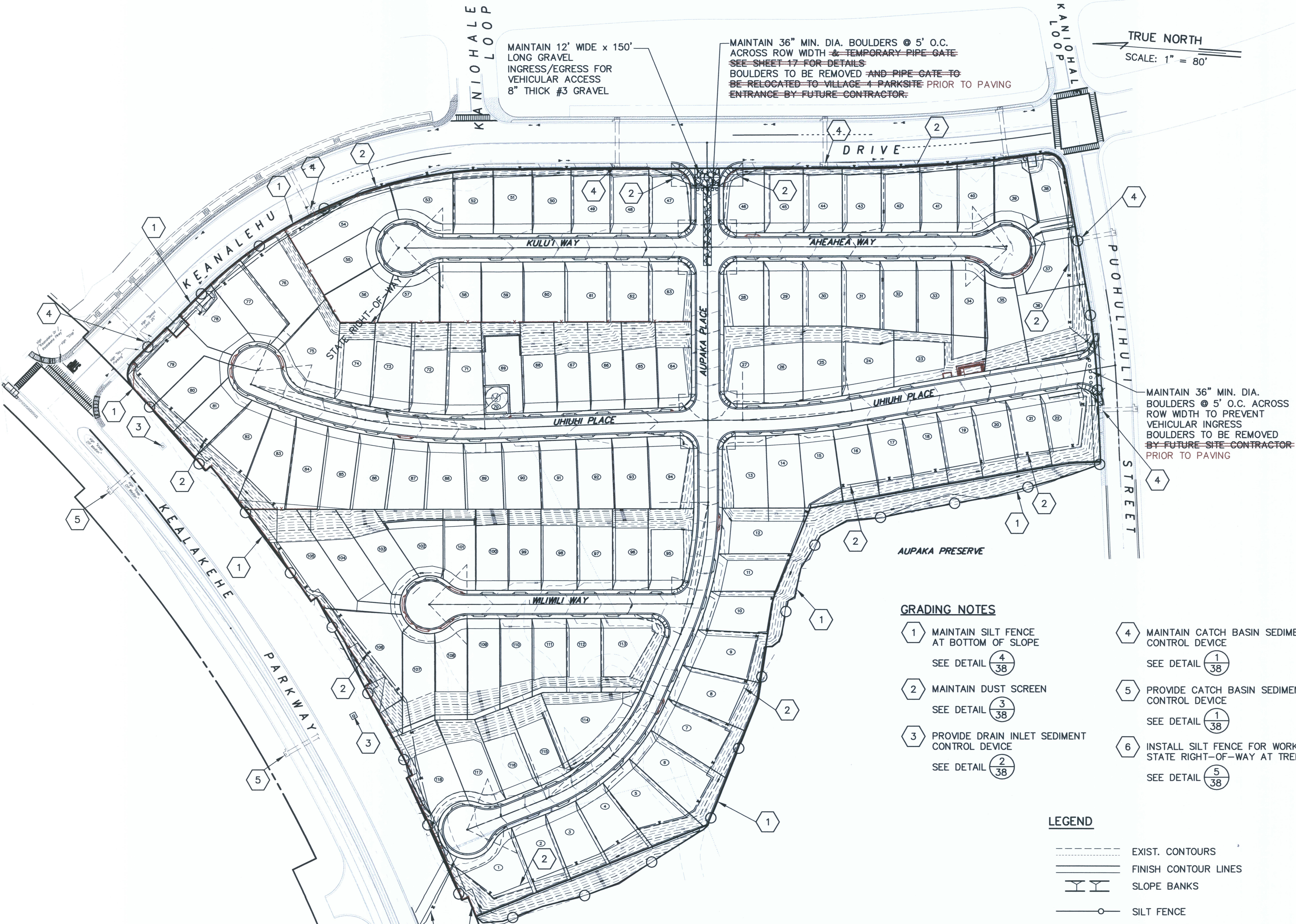
80 0 80 160  
SCALE: 1" = 80'

LEGEND

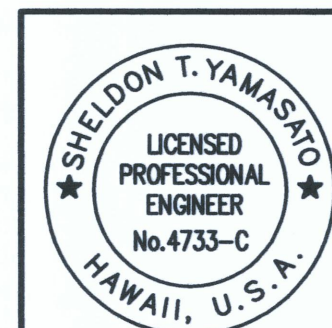
- EXIST. CONTOURS
- FINISH CONTOUR LINES
- SLOPE BANKS
- SILT FENCE
- DUST SCREEN
- FUTURE LOT LINE
- LOT NUMBER

GRADING NOTES

- 1 MAINTAIN SILT FENCE AT BOTTOM OF SLOPE  
SEE DETAIL 4/38
- 2 MAINTAIN DUST SCREEN  
SEE DETAIL 3/38
- 3 PROVIDE DRAIN INLET SEDIMENT CONTROL DEVICE  
SEE DETAIL 2/38
- 4 MAINTAIN CATCH BASIN SEDIMENT CONTROL DEVICE  
SEE DETAIL 1/38
- 5 PROVIDE CATCH BASIN SEDIMENT CONTROL DEVICE  
SEE DETAIL 1/38
- 6 INSTALL SILT FENCE FOR WORK WITHIN STATE RIGHT-OF-WAY AT TRENCH  
SEE DETAIL 5/38



MATCH LINE  
SEE LEFT

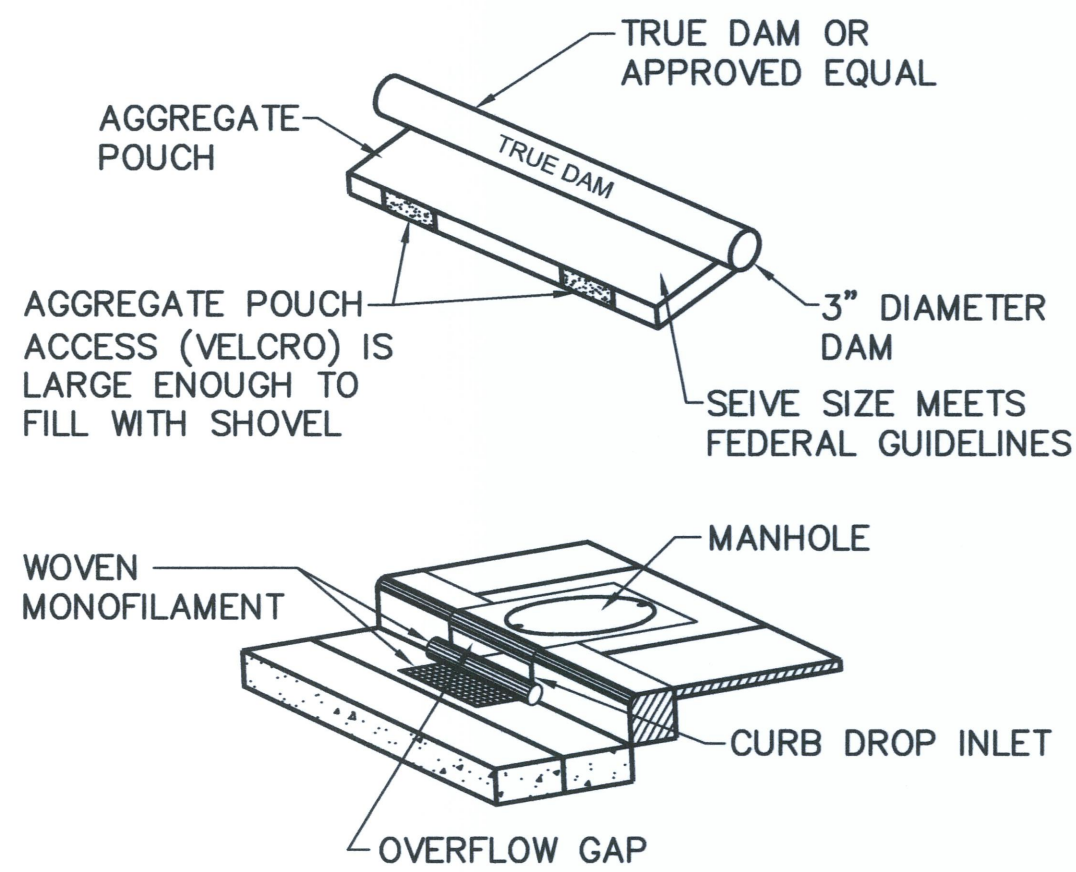


THIS WORK WAS PREPARED BY ME OR UNDER MY SUPERVISION AND CONSTRUCTION OF THIS PROJECT WILL BE UNDER MY OBSERVATION  
LICENSE EXPIRES 4/30/10

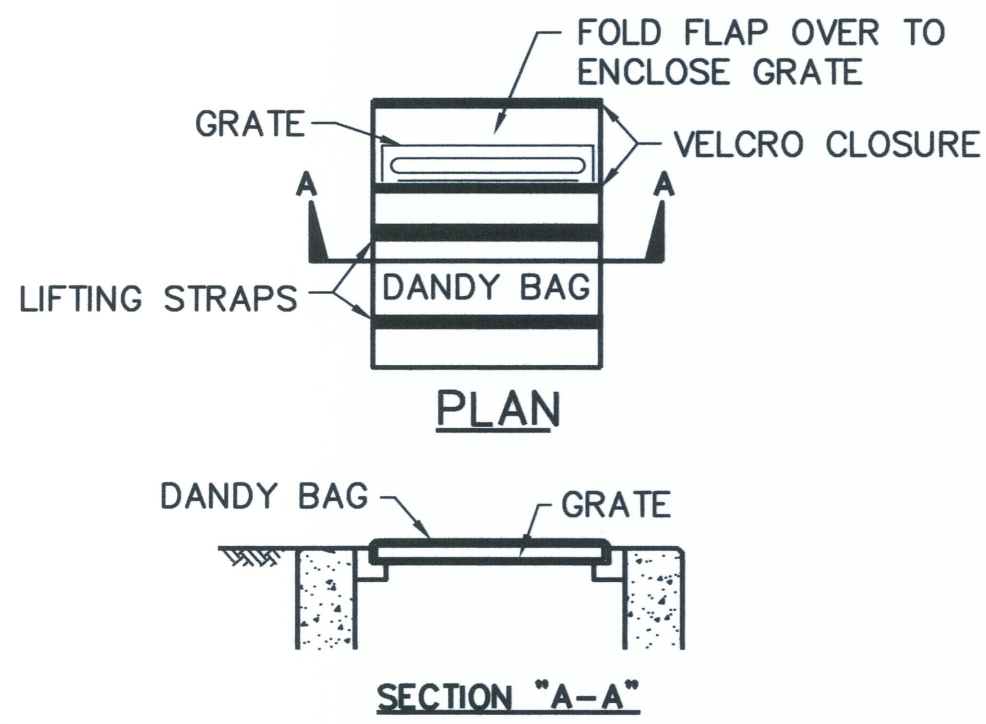
REVISION DATE	DESCRIPTION	MADE BY	APPROVED
DEPARTMENT OF HAWAIIAN HOME LANDS LA'IOPIA VILLAGE 5 TAX MAP KEY: (3) 7-4-21:6 KAILUA-KONA, NORTH KONA, HAWAII			
EROSION & DUST CONTROL PLAN			
Approved: _____ COUNTY ENGINEER, DPW, COUNTY OF HAWAII DATE _____			
AKINAKA & ASSOCIATES, LTD. CONSULTING ENGINEERS			
FILE	POCKET	FOLDER	NO.

AS-BUILT

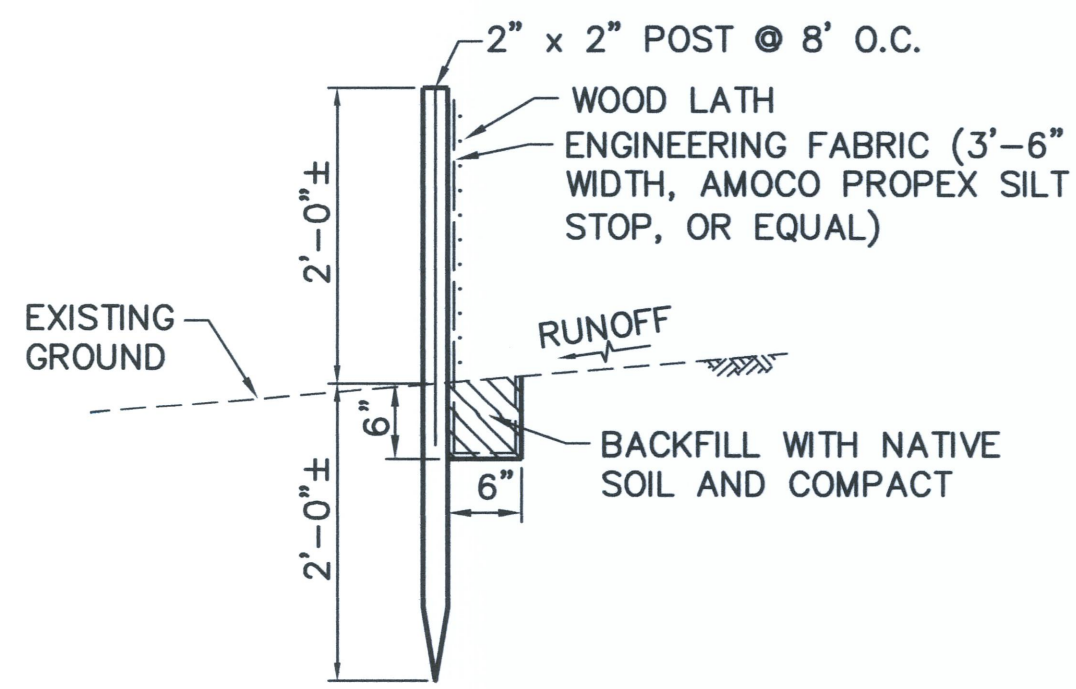




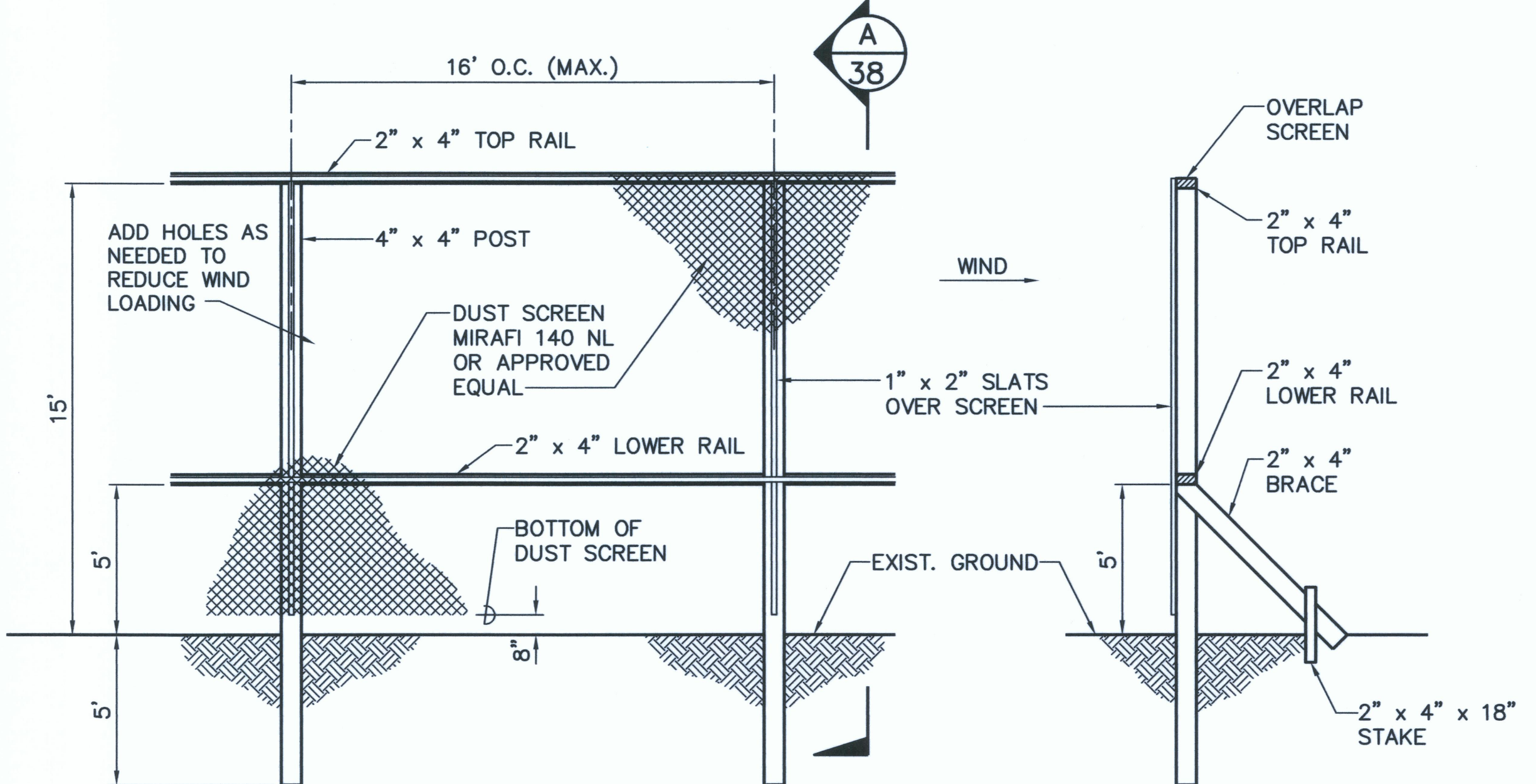
1 SEDIMENT CONTROL DEVICE  
38 FOR CATCH BASINS  
NOT TO SCALE



2 SEDIMENT CONTROL DEVICE  
38 FOR GRATED INLETS  
NOT TO SCALE

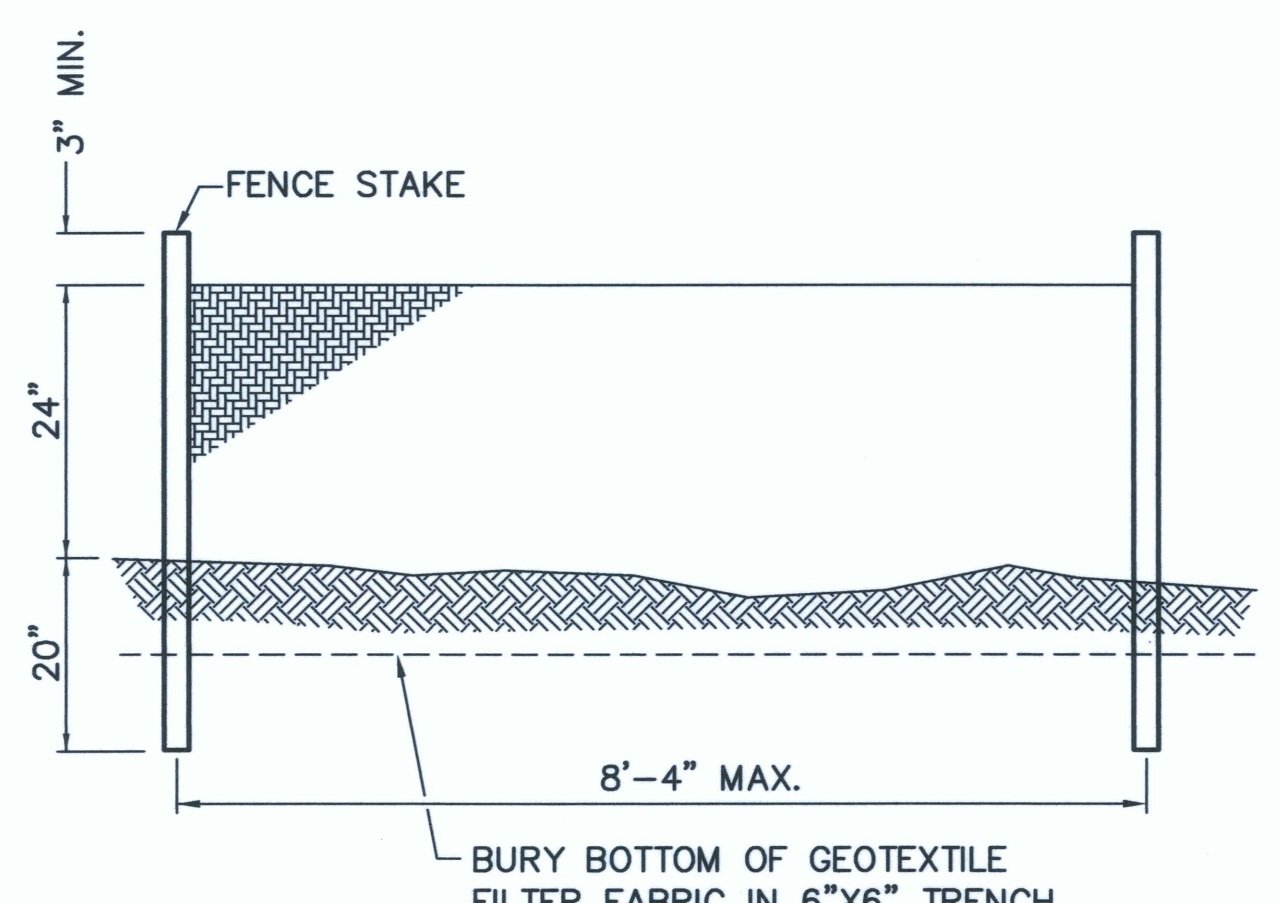


4 SILT FENCE INSTALLATION  
38 NOT TO SCALE



NOTE:  
DUST SCREEN SHALL BE MAINTAINED FOR DURATION OF CONSTRUCTION AND REMOVED UPON ITS COMPLETION.

3 DUST SCREEN DETAIL  
38 NOT TO SCALE

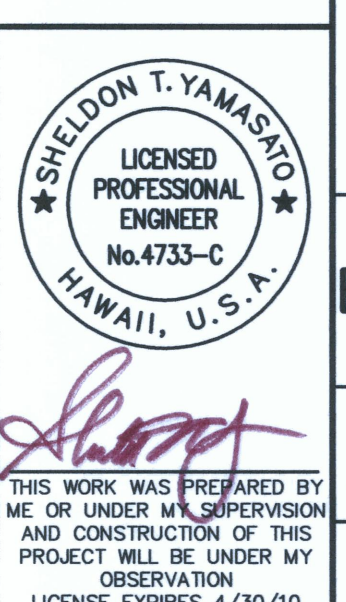


5 SILT FENCE INSTALLATION FOR WORK WITHIN STATE RIGHT-OF-WAY  
38 NOT TO SCALE

- NOTES:
1. THE FILTER FABRIC SHALL BE A MINIMUM OF 36 INCHES WIDE.
  2. IF SILT FENCE IS OBTAINED FROM MANUFACTURER AS A PACKAGE (I.E. FABRIC ATTACHED TO POST) THE MANUFACTURER'S INSTALLATION INSTRUCTION SHALL BE ADHERED TO.
  3. FENCE STAKES MAY BE WOOD OR METAL, MUST BE CAPABLE OF SUPPORTING ANTICIPATED LOADS.

- NOTES FOR TEMPORARY SEWER TRENCH PROTECTION:
1. DIMENSIONS SHOWN ARE APPROXIMATE. THE CONTRACTOR TO APPLY SCHEMATICS TO EACH SPECIFIC LOCATION.
  2. GRAVEL BAGS OR SILT FENCE IS TO COMPLETELY SURROUND ALL EQUIPMENT AND LAND DISTURBING ACTIVITIES.
  3. CONTRACTOR IS TO DIVERT ALL ROADSIDE DRAINAGE AWAY FROM THE TRENCH.
  4. ANY TRACKING OF SEDIMENT ONTO THE PUBLIC ROADWAY SHALL BE CLEANED IMMEDIATELY.
  5. THE TRENCH SHALL BE SHORED TO PREVENT COLLAPSE AT ALL TIMES WHEN OPEN FOR USE.
  6. IF ANY PORTION OF THE WORK IS OUTSIDE OF THE STATE/COUNTY RIGHT-OF-WAY, CONTRACTOR TO SECURE PERMISSION FROM ADJACENT PROPERTY OWNERS.
  7. THE CONTRACTOR SHALL PROVIDE AN APPROVED TEMPORARY NCHRP 350-COMPLIANT TRAFFIC BARRIER SYSTEM BEFORE AND END OF EACH WORK DAY AND DURING NON-WORKING HOURS.

- NOTES TO CONTRACTOR:
1. CONTRACTOR SHALL NOT HAVE ANY VEHICLES OR EQUIPMENT ON PUOHULIHULI STREET OR KEANALEHU DRIVE BETWEEN KEALAKEHE PARKWAY AND PUOHULIHULI STREET OR USE THEM FOR INGRESS/EGRESS OR VEHICLE STORAGE DURING SCHOOL DROP-OFF AND PICK-UP HOURS.
  2. CONTRACTOR SHALL MAINTAIN SEDIMENT BARRIERS AND/OR TRAPS.
  3. CONTRACTOR SHALL MAINTAIN ALL TEMPORARY BMP MEASURES UNTIL THE ENTIRE AREA IS COMPLETELY STABILIZED. ALL BMP MEASURES SHALL BE REMOVED IMMEDIATELY AFTER THE AREA IS COMPLETELY STABILIZED.



REVISION DATE	DESCRIPTION	MADE BY	APPROVED
DEPARTMENT OF HAWAIIAN HOME LANDS LA'IOPIA VILLAGE 5 TAX MAP KEY: (3) 7-4-21:6 KAILUA-KONA, NORTH KONA, HAWAII			
EROSION & DUST CONTROL DETAILS			
Approved: _____			
COUNTY ENGINEER, DPW, COUNTY OF HAWAII _____ DATE _____			
AKINAKA & ASSOCIATES, LTD. CONSULTING ENGINEERS			
FILE	POCKET	FOLDER	NO.



GENERAL NOTES FOR TRAFFIC CONTROL PLAN

1.

THE PERMITTEE SHALL MAKE MINOR ADJUSTMENTS AT INTERSECTIONS, DRIVEWAYS, BRIDGES, STRUCTURES, ETC., TO FIT FIELD CONDITIONS.
2.

CONES OR DELINEATORS SHALL BE EXTENDED TO A POINT WHERE THEY ARE VISIBLE TO APPROACHING TRAFFIC.
3.

TRAFFIC CONTROL DEVICES SHALL BE INSTALLED SUCH THAT THE SIGN OR DEVICE FARTEST FROM THE WORK AREA SHALL BE PLACED FIRST. THE OTHERS SHALL THEN BE PLACED PROGRESSIVELY TOWARD THE WORK AREA.
4.

REGULATORY AND WARNING SIGNS WITHIN THE CONSTRUCTION ZONE THAT ARE IN CONFLICT WITH THE TRAFFIC CONTROL PLANS SHALL BE REMOVED OR COVERED. ALL SIGNS SHALL BE RESTORED UPON COMPLETION OF WORK.
5.

FLAGGERS AND/OR POLICE OFFICERS SHALL BE IN SIGHT OF EACH OTHER OR IN DIRECT COMMUNICATION AT ALL TIMES.
6.

WHEN REQUIRED BY THE ISSUING OFFICE, THE PERMITTEE SHALL INSTALL A FLASHING ARROW SIGNAL AS SHOWN ON THE TRAFFIC CONTROL PLANS.
7.

SIGN SPACINGS (D), TAPER LENGTHS (T) AND SPACINGS OF CONES OR DELINEATORS SHALL BE AS SHOWN IN TABLE 1, UNLESS OTHERWISE NOTED ON THE TRAFFIC CONTROL PLANS.
8.

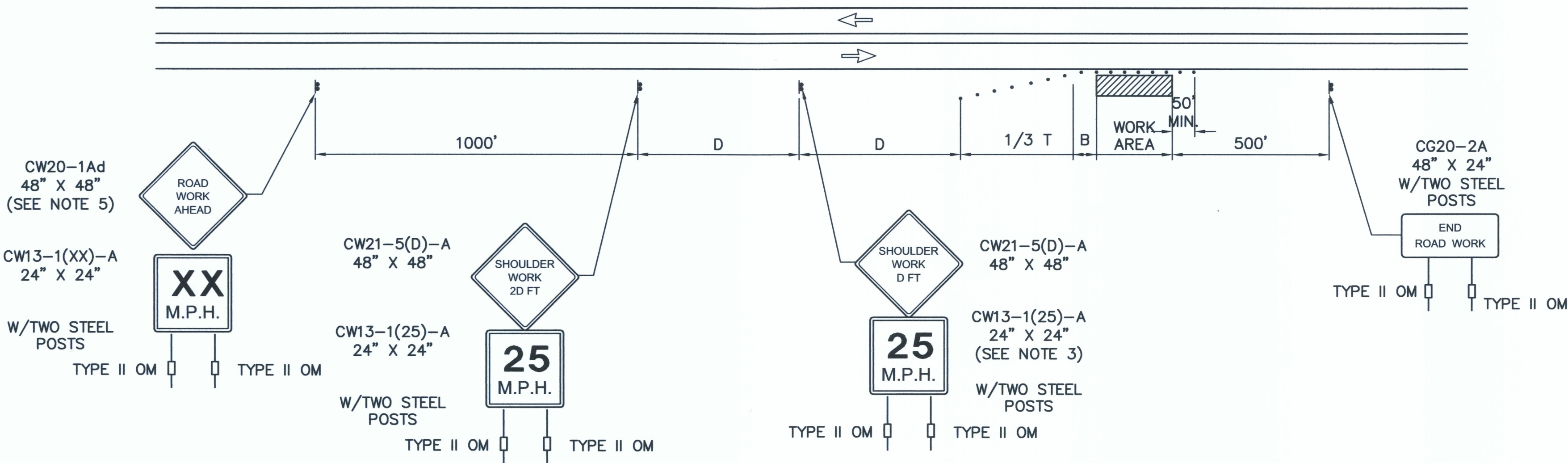
ALL TRAFFIC LANES SHALL BE A MINIMUM OF 10 FEET WIDE.
9.

ALL CONSTRUCTION WARNING SIGNS SHALL BE PROMPTLY REMOVED OR COVERED WHENEVER THE MESSAGE IS NOT APPLICABLE OR NOT IN USE.
10.

THE BACKS OF ALL SIGNS USED FOR TRAFFIC CONTROL SHALL BE APPROPRIATELY COVERED TO PRECLUDE THE DISPLAY OF INAPPLICABLE SIGN MESSAGES (I.E., WHEN SIGNS HAVE MESSAGES ON BOTH FACES).
11.

AT THE END OF EACH DAY’S WORK OR AS SOON AS THE WORK IS COMPLETED, THE PERMITTEE SHALL REMOVE ALL TRAFFIC CONTROL DEVICES NO LONGER NEEDED TO PERMIT FREE AND SAFE PASSAGE OF PUBLIC TRAFFIC. REMOVAL SHALL BE IN THE REVERSE ORDER OF INSTALLATION.
12.

PERMANENT PAVEMENT MARKINGS AND TRAFFIC SIGNS SHALL BE REPLACED UPON THE COMPLETION OF EACH PHASE OF WORK.



WORKING ON SHOULDER OR ROADSIDE  
TRAFFIC CONTROL PLAN  
FOR SEWER CONNECTION

- LEGEND
- ▮

SIGN
- CONE OR DELINEATOR
- ⇒

DIRECTION OF TRAFIC

NOTES:

1. THIS PLAN MAY BE USED ONLY IF ALL ROAD WORK, INCLUDING EQUIPMENT AND WORKERS ARE OFF THE TRAVEL WAY.
2. SEE TABLE 1 FOR ADDITIONAL DIMENSIONS.
3. ENGINEER WILL DETERMINE IF ADVISORY SPEED SIGN IS NECESSARY.
4. CONTRACTOR WILL PROVIDE NECESSARY ADJUSTMENTS TO ACCOMODATE BICYCLISTS AND PEDESTRIANS.
5. CW20-1Ad SIGN REQUIRED FOR POSTED SPEED LIMIT OF 45 MPH OR GREATER.
6. SIGNING IS NOT REQUIRED IF THE WORK AREA INCLUDING EQUIPMENT AND WORKERS, IS OUTSIDE THE CLEAR ZONE DISTANCE, AS SPECIFIED IN THE LATEST AASHTO ROADSIDE DESIGN GUIDE.

TABLE 1 FOR TRAFFIC CONTROL PLAN

POSTED SPEED LIMIT (M.P.H.)	SIGN SPACING (D) (FEET)	TAPER LENGTH (T) (FEET)		LONGITUDINAL BUFFER SPACE (B) (FEET)	SPACING OF CONES OR DELINEATORS (FEET)		
		W=12' OR LESS ①	W= GREATER THAN 12' ①		TAPER	TANGENT	WORK AREA
20	250	200	W x 17	35	20	20	10
25	250	200	W x 17	55	25	25	10
30	250	250	W x 20	85	30	30	10
35	250	250	W x 20	120	35	35	10
40	500	350	W x 30	170	40	40	10
45	500	550	W x 45	220	45	45	10
50	1000	600	W x 50	280	50	50	10
55	1000	700	W x 55	335	55	55	10

NOTES: ① W = WIDTH OF LANE, SHOULDER OR OFFSET.

DOT RIGHT-OF-WAY NOTES:

NO LANE CLOSURES ARE ALLOWED UNDER THESE PLANS. IF LANE CLOSURES ARE REQUIRED, DETAILED TRAFFIC CONTROL PLANS MUST BE SUBMITTED TO THE HIGHWAYS DIVISION, HAWAII DISTRICT OFFICE, FOR ACCEPTANCE PRIOR TO ANY LANE CLOSURES.



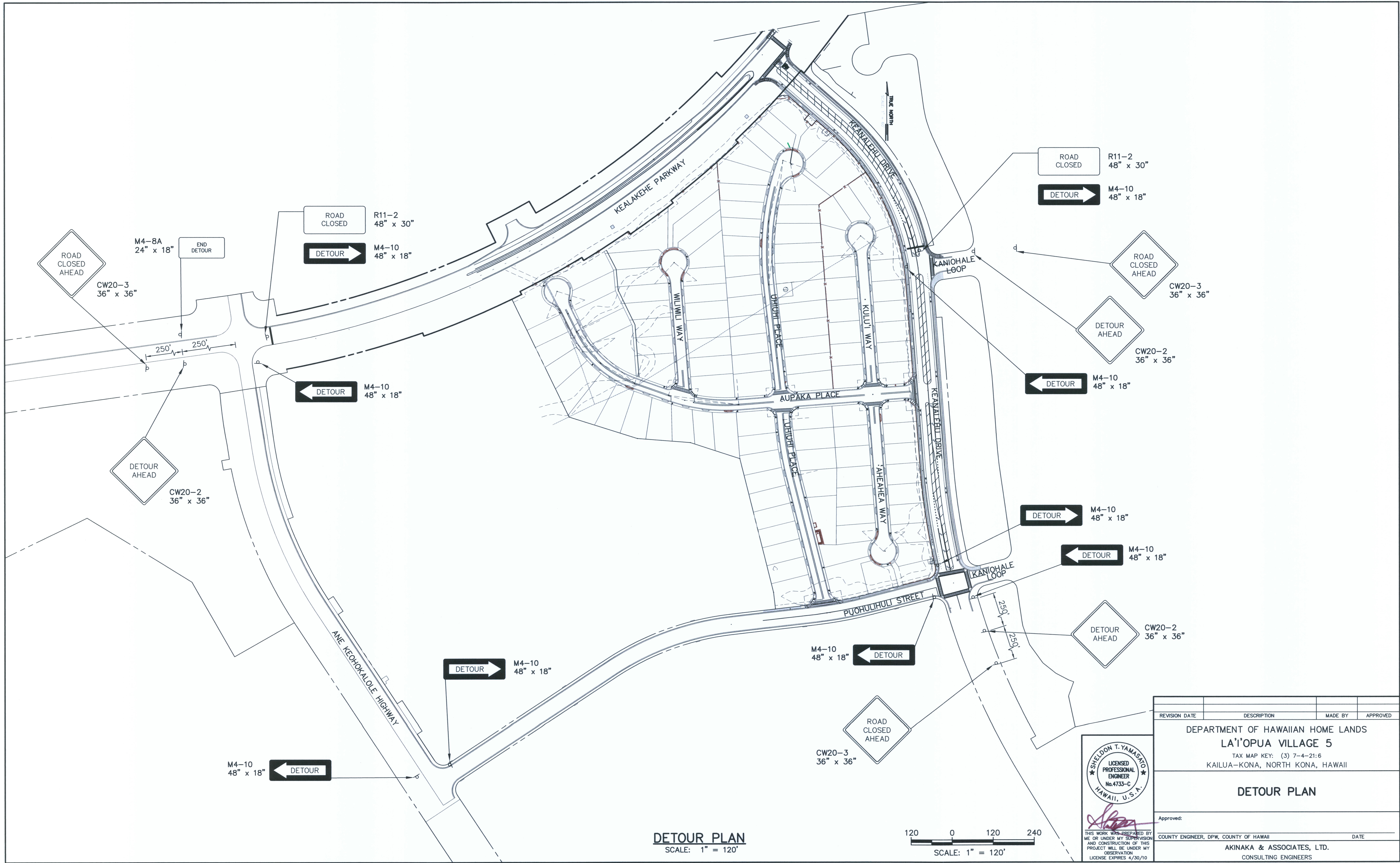
THIS WORK WAS PREPARED BY ME OR UNDER MY SUPERVISION AND CONSTRUCTION OF THIS PROJECT WILL BE UNDER MY OBSERVATION  
LICENSE EXPIRES 4/30/10

REVISION DATE	DESCRIPTION	MADE BY	APPROVED
DEPARTMENT OF HAWAIIAN HOME LANDS LA'I'OPUA VILLAGE 5 TAX MAP KEY: (3) 7-4-21:6 KAILUA-KONA, NORTH KONA, HAWAII			
TRAFFIC CONTROL NOTES			
Approved: _____ COUNTY ENGINEER, DPW, COUNTY OF HAWAII AKINAKA & ASSOCIATES, LTD. CONSULTING ENGINEERS			
FILE	POCKET	FOLDER	NO.

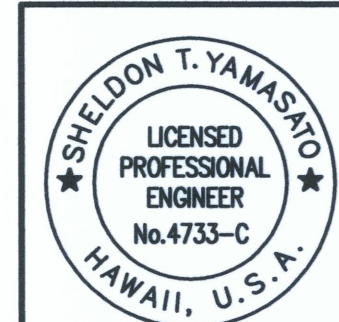
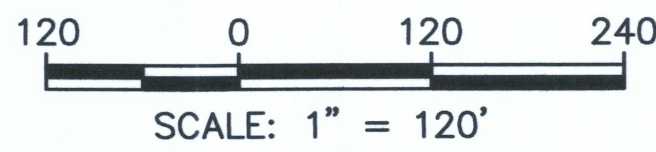
AS-BUILT



Last Save by: SHU  
Last Saved: 5/2/2012  
Plotted on: 5/29/2012  
G:\DHHL0402\ACAD\PCD1\DHHL04242\_STrPCD1.DWG



DETOUR PLAN  
SCALE: 1" = 120'



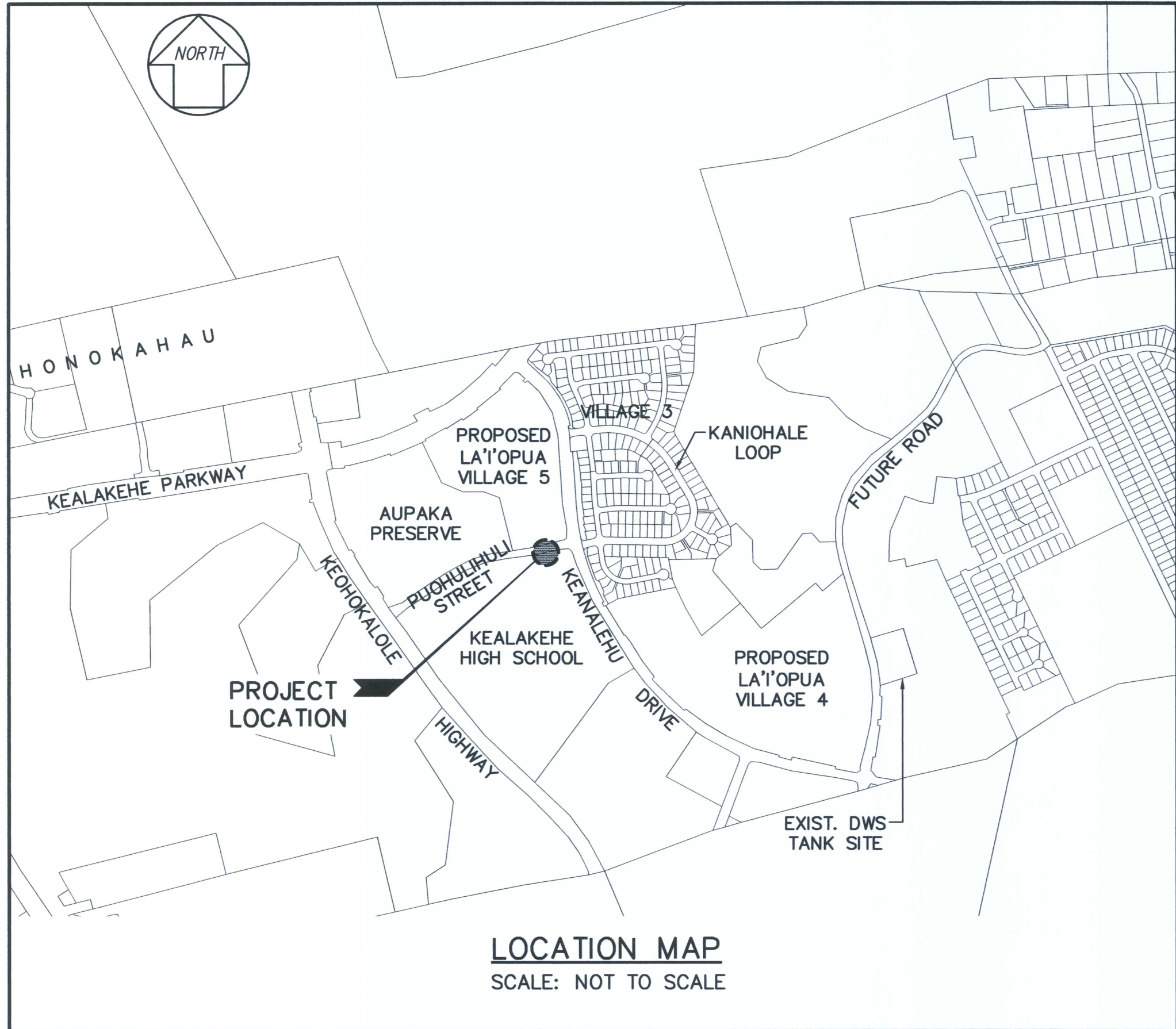
THIS WORK WAS PREPARED BY ME OR UNDER MY SUPERVISION AND CONSTRUCTION OF THIS PROJECT WILL BE UNDER MY OBSERVATION  
LICENSE EXPIRES 4/30/10

REVISION DATE	DESCRIPTION	MADE BY	APPROVED
DEPARTMENT OF HAWAIIAN HOME LANDS LA'IOPIUA VILLAGE 5 TAX MAP KEY: (3) 7-4-21:6 KAILUA-KONA, NORTH KONA, HAWAII			
DETOUR PLAN			
Approved: _____			
COUNTY ENGINEER, DPW, COUNTY OF HAWAII		DATE _____	
AKINAKA & ASSOCIATES, LTD. CONSULTING ENGINEERS			

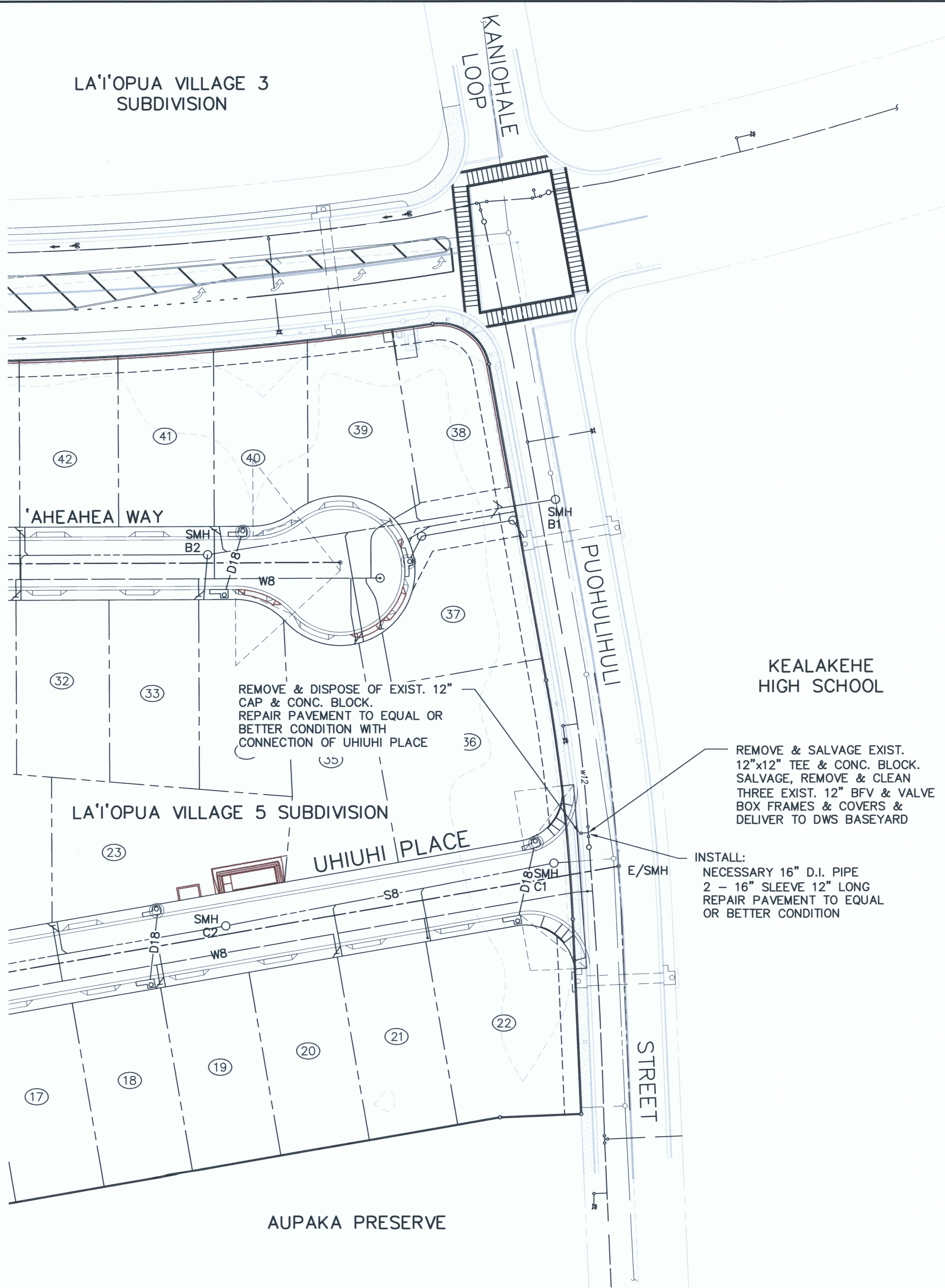
AS-BUILT



Last Save by: SHU  
Last Saved: 5/23/2012  
Plotted on: 5/29/2012  
G:\DHHL0402\ACAD\PCD1\DHHL04246\_STrPCD1.DWG

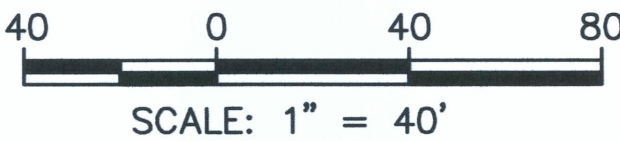


LOCATION MAP  
SCALE: NOT TO SCALE

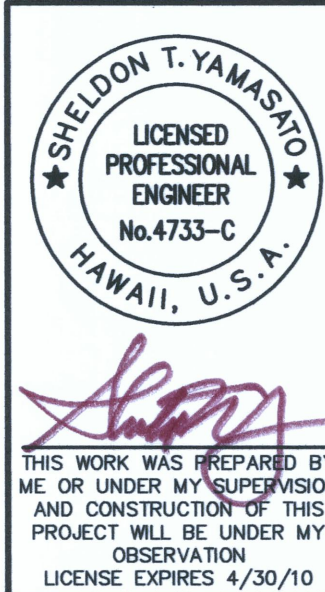


LEGEND

- w8— EXIST. WATER LINE
- W8— NEW WATER LINE
- d24— EXIST. DRAIN LINE
- D24— NEW DRAIN LINE
- e— EXIST. UTILITY/ELECT. LINE
- s8— EXIST. SEWER LINE
- S8— NEW SEWER LINE
- DOUBLE SERVICE SEWER LATERAL
- SINGLE SERVICE SEWER LATERAL
- FIRE HYDRANT
- 1-1/2" DOUBLE SERVICE WATER LATERAL WITH TYPE "B" CONNECTION FOR 2-5/8" METERS
- 1" SINGLE SERVICE WATER LATERAL WITH TYPE "A" CONNECTION FOR ONE 5/8" METER
- (5) LOT NUMBER



PUOHULIHULI STREET WATER IMPROVEMENTS  
SCALE: 1" = 40'



REVISION DATE	DESCRIPTION	MADE BY	APPROVED
DEPARTMENT OF HAWAIIAN HOME LANDS LA'I'OPUA VILLAGE 5 TAX MAP KEY: (3) 7-4-21:6 KAILUA-KONA, NORTH KONA, HAWAII			
PUOHULIHULI STREET WATER IMPROVEMENTS			
Approved: _____ COUNTY ENGINEER, DPW, COUNTY OF HAWAII DATE _____			
AKINAKA & ASSOCIATES, LTD. CONSULTING ENGINEERS			
FILE	POCKET	FOLDER	NO.

AS-BUILT