

PLANNING OFFICE
DEPARTMENT OF HAWAIIAN HOME LANDS

August 16-17, 2021

TO: Chairman and Members, Hawaiian Homes Commission

THROUGH: Andrew H. Choy, Acting Planning Program Manager *AC*

FROM: Gigi Cairel, Grants Specialist

SUBJECT: Accept the Beneficiary Consultation Report for the Maui County Fire Department's Request to Utilize Hawaiian Home Lands for an access easement 'Ualapu'e, Moloka'i TMK (2)-5-6-002: 036 (por.) and 002 (por.)

RECOMMENDED MOTION/ACTION

That the Hawaiian Homes Commission (HHC) accept this Beneficiary Consultation Report as the official public record of beneficiary input and feedback relative to the Maui County Fire Department's request to utilize Hawaiian Home Lands for an access easement in 'Ualapu'e, Moloka'i.

DISCUSSION

Background

The Maui County Fire Department is looking to acquire private property to establish a new fire station on the east end of Moloka'i. The private property is adjacent to DHHL lands in 'Ualapu'e (See EXHIBIT A, Location Map). The Fire Department is seeking an easement from DHHL to better allow large fire trucks and vehicles to access a newly planned fire station at the site. Without an access easement from DHHL, the site would be feasible for the Fire Department to locate a fire station and the Fire Department would need to find another location for a fire station. The size of the area requested is approximately 15,000 square feet and is illustrated in EXHIBIT A. The purpose of the beneficiary consultation meeting was to provide more information regarding the Fire Department's request and collect beneficiary mana'o on the Fire Department's request to use DHHL 'Ualapu'e lands for an access easement.

The DHHL recognizes that meaningful, timely, and informative beneficiary consultation is necessary for the successful formulation and implementation of its policies, programs, and projects. In 2009, the HHC adopted a Beneficiary Consultation (BC) Policy (Policy). The purpose of the Policy is to ensure that appropriate beneficiary consultation processes and activities are incorporated into DHHL's planning and decision-making. The Policy requires BC for four types of proposals: 1) Statewide Policy Issues, 2) Amendments to Land Use Designations, 3) Development of DHHL Plans and 4) Proposed long-term use of DHHL lands for non-homesteading uses.

The request by the Fire Department to utilize DHHL lands for an access easement constitutes a long-term non-homesteading use of DHHL lands and therefore required a beneficiary consultation meeting prior to HHC action on the request. A beneficiary consultation meeting was held on June 23, 2021 with DHHL beneficiaries that reside on the island of Moloka'i. Because of the COVID-19 pandemic, the meeting was held on the Zoom virtual meeting platform.

Beneficiary Consultation Process

The proposed use of Hawaiian Home Lands went through the following steps prior to the BC to ensure that beneficiaries were informed about the opportunity to provide feedback on the legislative proposal.

STEP 1. THE PROPOSED ACTION IS DESCRIBED:

The Maui County Fire Department is looking to acquire private property to establish a new fire station on the east end of Moloka'i. The private property is adjacent to DHHL lands in Ualapu'e. The Fire Department is seeking an easement from DHHL to better allow large firetrucks and vehicles to access a newly planned fire station at the site.

STEP 2. BENEFICIARIES WERE NOTIFIED OF OPPORTUNITIES TO CONSULT

Due to health and safety precautions from the COVID-19 pandemic, the Department conducted a beneficiary consultation meeting utilizing the Zoom virtual

meeting platform with DHHL beneficiaries that reside on Moloka'i.

1. Approximately 500 postcards were mailed to all Moloka'i homestead lessees. [Exhibit B]
2. Approximately 400 postcards were mailed to all waitlist applicants that either reside on Molokai or are on the Moloka'i waiting-list. [Exhibit B]

STEP 3. PRESENTATION MATERIALS FOR ALL MEETINGS ARE AVAILABLE FOR FEEDBACK:

DHHL created a webpage to disseminate information and provide easy access to information related to this request, including:

1. Weblink to the BC meeting and recording;
2. Meeting notes from the June 23, 2021 beneficiary consultation meeting

The webpage for this consultation meeting can be found here:

<https://dhhl.hawaii.gov/po/molokai/mfd-access-easement-land-use-request/>

STEP 4. COMMENTS ARE COMPILED INTO MEETING REPORTS:

The following table and data below captures the level of participation and engagement at the June 23, 2021 consultation and subsequent 30-day comment period:

Table 1: Summary of Proposed Limited Gaming Legislation

Beneficiary Consultation Meeting	Estimated Attendance	No. Self-ID as DHHL Beneficiaries	No. of Questions and/or Comments
June 23, 2021	40	30	28
Written Comments Submitted during the 30-Day Comment Period	--	--	16
TOTAL	40	30	44

BC attendees did not sign a physical sign-in sheet due to their participation via a virtual online platform. Instead, attendees were asked to sign-in to the "Chat-box" on Zoom and self-identify whether or not they were a DHHL beneficiary. However, it is uncertain whether all attendees complied with the request to sign-in. Also, there may have been multiple people participating from a single computer or mobile device. Therefore it is difficult to determine exact amount of participants during the meeting.

As reflected in Table 1, approximately 40 people attended the virtual meeting on June 23rd. Approximately three-quarters of the meeting participants self-identified as a DHHL beneficiary. In addition to comments received at the beneficiary consultation meeting, 16 additional comments were received from 14 individuals during the 30-day comment period.

DHHL also received 358 questions, comments and/or opinions during the BC process.

The following exhibits reflect BC meeting notes, participant opinions and/or comments:

1. Exhibit D - June 23, 2021 Meeting Notes
2. Exhibit E - June 23 - July 22, 2021:
Correspondence submitted during the 30-day Comment Period

Summary of Beneficiary Comments:

In summary, the majority of beneficiaries that participated in the consultation process supported the Fire Department's utilization of DHHL lands as an access easement. There were a handful of commenters that opposed the utilization of DHHL lands by the Fire Department and several commenters expressed support for the Fire Department's request but would also like to have the County provide additional benefits to the community. Comments are further discussed below.

Support for granting the Fire Department's Easement Request

Beneficiaries that expressed support for the Fire Department's utilization of DHHL lands as an access easement supported the land use request because of the first responder emergency services that the Fire Department would provide to a future homestead community. Beneficiaries felt that having a fire station next to DHHL lands would be an asset for the future homestead and for beneficiaries that live on the east end of Moloka'i.

"The response time if Fire Department is to respond from Kaunakakai Fire Station to Kamalo, that is only 10 miles out of town, it would take them a good 20-25 minutes and 20-25 minutes to someone's life who is having a CVA which is a stroke it could be fatal. If someone is having a heart attack and no one at the residence knows CPR and you do not have an AED at the residence, that person can die and most likely it's going to be a resident and not a visitor so people who live in that area they should be blessed and fortunate that they will have access to medical first responder, fire response should they have a house fire, any type of fire, brush fire."

"I'm on the waitlist. I've been waiting for a long time. My mother's been waiting for a long time. I know many people waiting. I don't know any of us would be willing to fight for that [homestead lot] at the loss of somebody's life. If we don't keep that Fire Station on the east end, we are not going to be there to help people who need their help."

Opposition to granting the Fire Department's Easement Request

Beneficiaries that are not supportive of the Fire Department's easement request are opposed to the proposal because they feel that the land could be utilized for homesteading and that the Fire Department's use of DHHL land would take lands away from waitlist beneficiaries.

"It is my mana`o and I know everybody's working hard to better Moloka'i and to better things, but there's gotta be a better way because when you take away just a little fragment, a parcel from DHHL, you're taking away from somebody who is on the waiting list just so you can move forward with something else."

"I love you guys, but I'm not for it because it's taking up our space. You know how long we've been waiting? I was supposed to be up there on homestead. You know how many years that is? I say no."

Additional Community Benefits Related to New Ualapu'e Kuleana Homestead Community

There were several comments submitted during the consultation process that expressed a desire for the County to provide additional community benefits related to the planned 'Ualapu'e Kuleana Homestead community in exchange for DHHL granting the easement request to the Fire Department. Benefits requested by beneficiaries are summarized as follows:

1. A fence along the east side of the Fire Department easement to provide more security for the families that may reside in the area;
2. That Maui County provide future 'Ualapu'e lessees access to free potable water by constructing a Water Tower that is high enough to allow trucks with containers of 250 gallons of water to drive up and fill the containers without having to unload the containers;
3. That DHHL identify and charge the county the fair market value for the area of land requested for the access easement and that 100 percent of the lease rent be set aside for the Ahonui Homestead Association's implementation of the Ualapu'e Master Plan;
4. That Maui County assist in the construction of paved roads to assist 'Ualapu'e lessees to access their

homestead lots which will be identified in the master plan.

The terms of the license agreement are more fully discussed in Agenda Item F-2. In brief, after negotiations with the Fire Department, access to water and the construction of a water tower and the construction of paved roads were not included as conditions in the license agreement with the Fire Department. The Fire Department expressed that other County Departments have direct kuleana over water and road development, not the Fire Department. However, the Fire Department did commit to making inquiries to the other County agencies (County Departments of Water Supply and Public Works) responsible for these types of improvements that beneficiaries are seeking for the new 'Ualapu'e homestead community.

The Fire Department did agree to a one-time license fee for the access easement. Also, the Fire Department was open to constructing a fence along the easement area if a fence is compatible with the future settlement plan for 'Ualapu'e. The access easement to the Fire Department will be a non-exclusive easement, meaning other users, such as future homestead lessees could utilize the easement as an ingress and egress. However, ingress and egress to the future homestead community has not been identified at this time and will be identified during the 'Ualapu'e Settlement Plan process.

Recommendation

Staff respectfully requests that the Hawaiian Homes Commission approves the recommended motion as stated.



**EXHIBIT A
LOCATION MAP**

Map Mock-ups (not to scale)

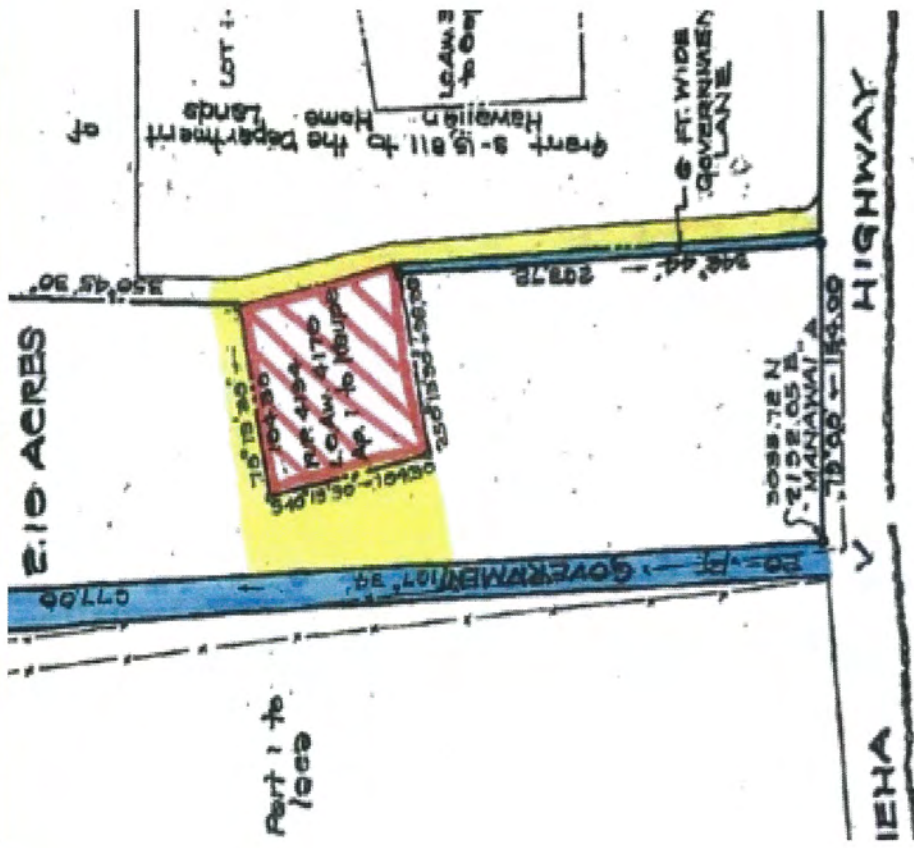


EXHIBIT "A"

BENEFICIARY CONSULTATION VIRTUAL MEETING



Maui County Fire Department Access Easement Request, Ualapu'e, Moloka'i



This is Not an Awards Notice

dhhl.hawaii.gov/po/Molokai

EXHIBIT "B"

Beneficiary Consultation Virtual Meeting



DEPARTMENT OF HAWAIIAN HOME LANDS
P.O. BOX 1879 HON, HI 96805

PRESORTED
STANDARD
US POSTAGE PAID
HONOLULU, HI
PERMIT NO. 574

Maui County Fire Department Access Easement
Request, Ualapu'e, Moloka'i

Wednesday, June 23, 2021
6:00 p.m. to 7:30 p.m.

Meeting Purpose:

Collect beneficiary mana'o on the
Fire Department's request to use
DHHL Ualapu'e lands for an access
easement.

Join the Virtual Meeting:

dhhl.hawaii.gov/po/Molokai

Questions? dhhl.planning@hawaii.gov

EXHIBIT "B"



HAWAIIAN HOME LANDS
HAWAIIAN HOMES COMMISSION • DEPARTMENT OF HAWAIIAN HOME LANDS

Beneficiary Consultation

Maui County Fire Department Request

to Utilize DHHL Land for Access Easement


June 23, 2021
Meeting will start at 6:00pm

1

Meeting purpose

- To collect DHHL beneficiary feedback on proposed long-term use of DHHL land by the Maui County Fire Department

2

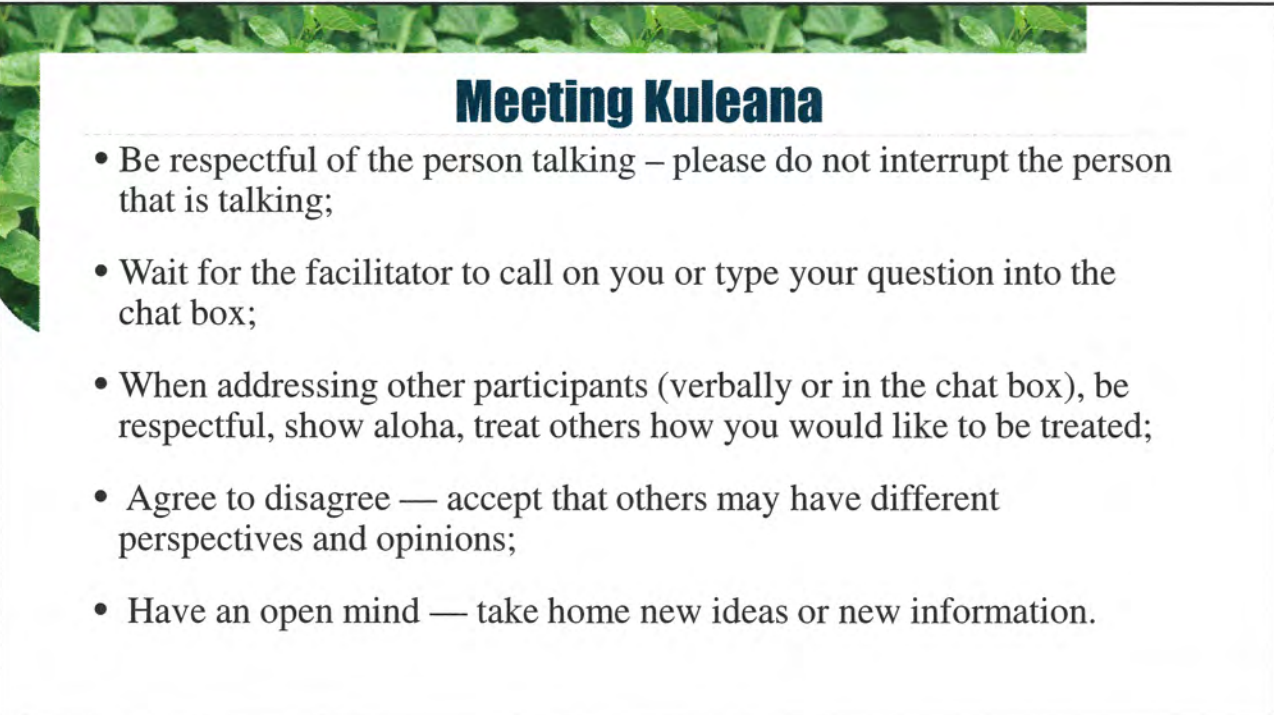


The screenshot shows a Zoom meeting interface. At the top, there is a toolbar with icons for Unmute, Stop Video, Security, Participants, Chat, Share Screen, Record, Reactions, and an End button. Below the toolbar, the main content area displays a presentation slide. The slide has a background image of green leaves on the left and a white box on the right containing the title 'House Keeping' and a list of four bullet points.

House Keeping

- Please keep your microphone on mute when you are not talking
- Type your questions in the chat or raise your virtual hand
- Please keep in mind this meeting is being recorded
- In the CHAT please sign-in (First & Last Name, where you live, applicant, lessee, or other)

3



The screenshot shows a presentation slide with a background image of green leaves on the left. The slide has a white box on the right containing the title 'Meeting Kuleana' and a list of five bullet points.

Meeting Kuleana

- Be respectful of the person talking – please do not interrupt the person that is talking;
- Wait for the facilitator to call on you or type your question into the chat box;
- When addressing other participants (verbally or in the chat box), be respectful, show aloha, treat others how you would like to be treated;
- Agree to disagree — accept that others may have different perspectives and opinions;
- Have an open mind — take home new ideas or new information.

4



DHHL Beneficiary Consultation Policy

- Beneficiary Consultation is required for four types of proposals that require Hawaiian Homes Commission approval
 - Statewide Policy Issues
 - Amendments to Land Use Designations
 - Development of DHHL Plans
 - Long-term use of DHHL land for a non-homestead use

5



Tonight's Agenda

- Welcome & Introductions
- Presentation by Maui County on Proposed Use of DHHL Lands for an Access Easement
- Beneficiary Questions on Presentation
- Beneficiary Mana'o on Proposed Use of DHHL Lands
- Next-Steps

6



Meeting purpose

- To collect DHHL beneficiary feedback on proposed long-term use of DHHL land by the Maui County Fire Department

7

Pūkoʻo Fire Station
Relocation

DHHL Beneficiary
Consultation

June 23, 2021



8

Issues with Current Site

Building is in
disrepair

Flooding
occurs on the
site

Month-to-
month lease
from the State

9

Brief Background on Relocation Efforts

Pre-May 2019 Maui Fire Department identified a potential relocation site behind the Kilohana Rec. Center

May 4, 2019 &
May 7, 2019 Public meetings were held at Kilohana Rec. to discuss relocation of Pūko'o Fire Station to the Kilohana site.

**Social impacts and cultural concerns were shared by community members regarding the specific Kilohana site, but overall, the community supported the general idea that relocation is needed.*

10

Where we are at now

The availability of a new potential relocation site was brought forward as a viable option for consideration on May 22, 2021.

Fire Chiefs visited the site to confirm that it could fit the needs of the station.

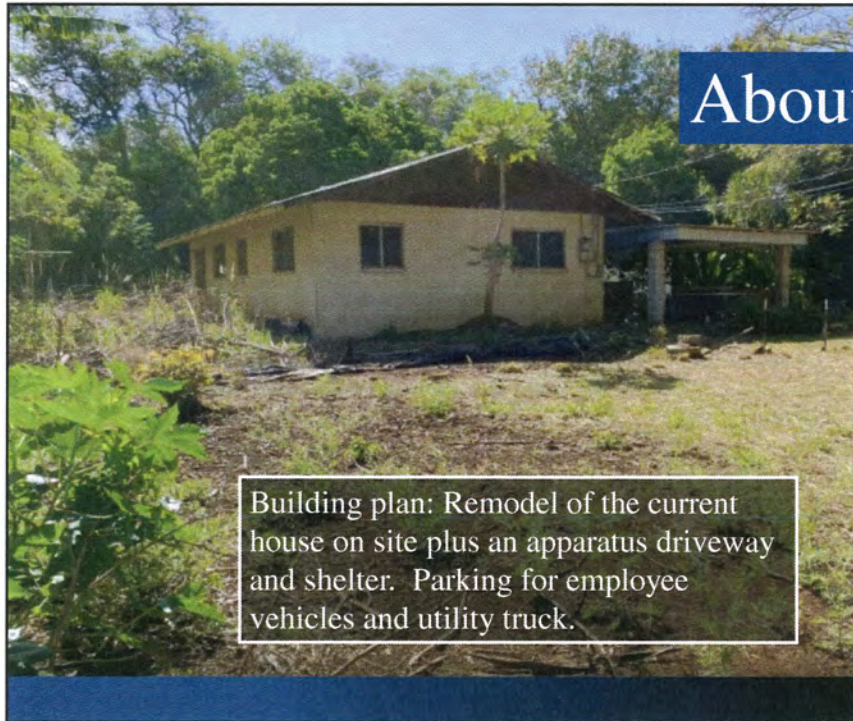
Council approved a budget amendment to move forward with acquisition and renovation.

Council Member Rawlins-Fernandez hosted a public community meeting to discuss the new site.

DHHL Beneficiary Consultation to discuss easement through Hawaiian Homelands properties.

11

About the new site



Building plan: Remodel of the current house on site plus an apparatus driveway and shelter. Parking for employee vehicles and utility truck.

- 7541 Kamehameha V. Hwy, Fee-Simple
- Approx. 0.5 miles east of Kilohana School
- Listed for sale at \$339,000.00
- Tax map key # 2-5-6-002-002-0000
- 0.25acre, 3 bedrooms / 2 baths, masonry construction
- Outside of SMA, approx. 1,100ft from ocean
- Surrounding uses: Residential, farm/agriculture, Hale Pomaika'i
- Property is accessible through two government roads
- Property is surrounded by DHHL

12

Why are we seeking an easement?

Extended roadway width to accommodate the firetruck.

Needed to cross over the mulch area and onto the proposed site.

Space for staff parking.

13




East Easement

- Existing 6ft lane, government road
- Seeking additional 15x400ft
- 0.14 acres/6,000sqft
- Improvements:
- Vegetation clearing, ground preparation, asphalt lane
- Improved driveway will be usable for homestead/DHHL access
- TMKs: 2560020360000
- [link to tax map](#)

** all numbers are estimates only **


14



West Easement

- Needed to cross from government road to property
- Intended use: driveway access, parking area
- Approx. 0.13 acres, 6,000 sq.
- Estimated area: 42 x 115 x 57 x 120 ft
- TMK: 2560020010000
- [link to tax map](#)
- * *all numbers are estimates only* *

15

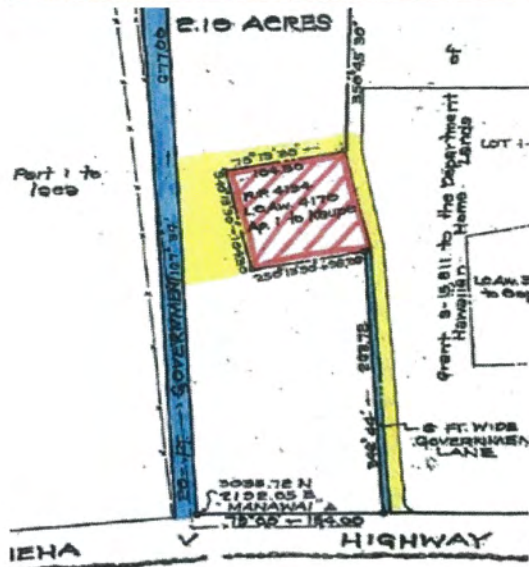


North Easement

- 20ft extension to create a buffer zone
- Possible use for extra parking
- 0.075 acre, 3,267sqft
- 20 x 151.1 x 20 x 145.3ft
- * *all numbers are estimates only* *

16

Map Mock-ups (not to scale)



17

Easement Request Summary

0.345 Acres total
(estimated)

15,045 Sq. Ft total
(estimated)

Easements for two
DHHL TMKs to
be included in one
land license

18

Benefits to DHHL Beneficiaries and Community



Secured first response emergency coverage in the Mana'e district for the health and safety of DHHL beneficiaries and entire community



A fire station near kupuna who will live at the future homestead



A paved driveway on the east side of the fire station TMK that will be usable by DHHL homesteaders



Mitigation of water run off from fire station TMK away from Ka Hale Pomaika'i

19

What's at risk?

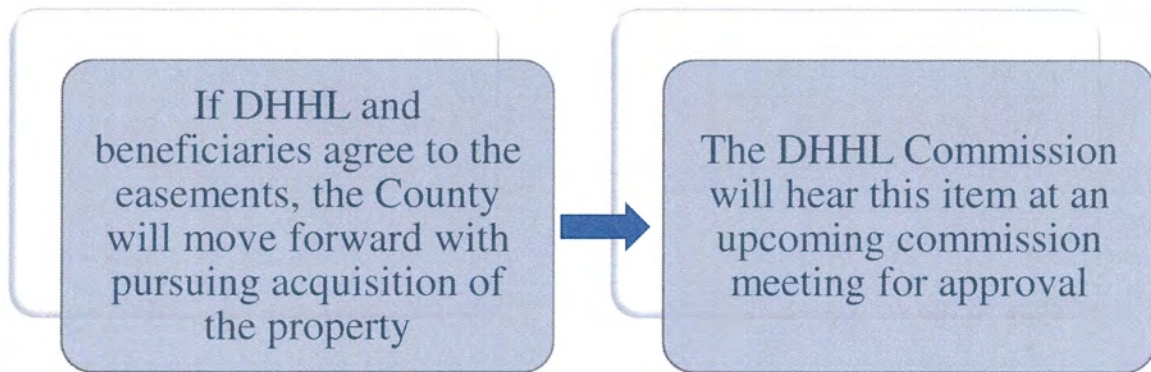
If a new site cannot be secured before the Irwin Health Center becomes too high a risk, the Mana'e firefighters will be relocated to the Kaunakakai Station.

If relocated to Kaunakakai, call response time will increase.

Properties that can accommodate the requirements of a fire station are limited in the Mana'e area.

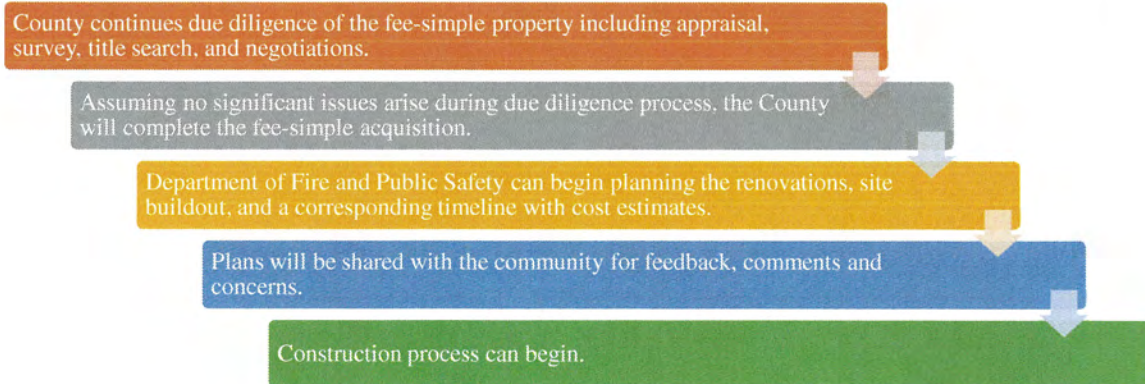
20

DHHL Next Steps



21

County of Maui - Next Steps



22

Nīnau

Questions on the Presentation

23

Mana'o

Comments and Feedback on the Proposed Use of DHHL Land as An Access Easement by the Maui County Fire Department

24

Next-Steps

- 30-Day Beneficiary Consultation Comment Period (June 23 to July 22)

Email comments to: [dhhl.planning@hawaii.gov](mailto:dhdl.planning@hawaii.gov)

- Beneficiary Consultation Report to the Hawaiian Homes Commission and Seek Commission Approval on Easement Request (August)

EXHIBIT D – MEETING NOTES

Beneficiary Consultation: MFD Access Easement Land Use Request - Ualapue, Moloka'i

Virtual Beneficiary Consultation Meeting

June 23, 2021, 6:00 pm to 7:30 pm

Background

The Maui County Fire Department is looking to acquire private property to establish a new fire station on the east end of Moloka'i. The private property is adjacent to DHHL lands in Ualapu'e. The Fire Department is seeking an easement from DHHL to better allow large fire trucks and vehicles to access a newly planned fire station at the site. The purpose of the meeting is to provide more information regarding the Fire Department's request and collect beneficiary mana'o on the Fire Department's request to use DHHL Ualapu'e lands for an access easement.

Q&A (Beginning at 25:16 of recording)

- Andrew Choy: Mahalo Brad for your presentation
 - At this time, your folks' opportunity to ask questions on this request by the County of Maui Fire Department
 - Gigi, anything in the chats to talk about first
- Gigi: Not at this time Andrew
- Andrew Choy: Questions from the group?
- Sybil Lopez: Mahalo Chief for your presentation
 - Question maybe you covered but wasn't in presentation
 - What is your current capacity look like at Pūko'o Fire Station (PFS)
 - Who do you serve
 - How much do you serve
 - What is the area that you serve
- Chief Ventura: As far as PFS goes, you mean how large is the community, how much is the population of the community, or how many calls for service do we have
- Sybil Lopez: All of the above
 - What is the current capacity of Pūko'o Station
 - What is the area you serve
 - From Makolelau to Hālawā
 - From Kamahao to Hālawā
 - How many people in that area
 - What type of calls do you have on
 - Daily basis
 - Monthly basis
 - Those services that you provide right now
- Chief Ventura: Pūko'o Fire Station is only a two man station
 - They respond collectively with our Kaunakakai Fire Station on any major incidents
 - The Pūko'o Station is and will be the first from Hālawā back towards town
 - Couldn't tell you off the top of my head if Pūko'o and Kaunakakai were responding together in the same direction and they were coming towards each other where exactly they would meet, but if there were any type of house fire, ocean rescue then both Kaunakakai and Pūko'o would respond to that

EXHIBIT D – MEETING NOTES

Beneficiary Consultation: MFD Access Easement Land Use Request - Ualapue, Molokaʻi

Virtual Beneficiary Consultation Meeting

June 23, 2021, 6:00 pm to 7:30 pm

- If was just a medical call and medics were responding with PFS, then medics and PFS would handle itself with the two personnel in the fire truck and two personnel in the ambulance
- I'd have to look up the area as far as number of houses and number of people, and number of square miles for service out there and get that to you later
- Sybil Lopez: Mahalo
- Andrew Choy: I see Cora's hand is up, go ahead Cora
- Cora Schnackenberg: Thank you for your presentation
 - I'd like to refer back to one of your slides
 - East side of slide, easement request for 15 feet on Manawai side
 - Just for clarification
 - Looking on my right side, you see the adjacent parcel is on the east of your redline easement, going mauka makai
 - Those two areas is possibly having homes
 - Will that be possible to... I didn't see any... you went through your community benefit...
 - I want to explore and expand that community benefit if I may
 - Because we possibly will be putting homes in this area, I'd like to include in your benefit to put a fence along the east side of your easement to provide more security for the families, whoever will be occupying that area
 - That is what I'd like to share with you for your folks' consideration
 - I like the idea of about your putting that swell or bump in the road to divert water
 - I like those ideas
 - Would like to further explore other things and speak to DHHL about and they will share at this point
 - I'd like to share with them first
 - Commissioner Helm: This is for Sybil's question
 - As far as the area that PFS serves, starts from Mile Post 10 in Kamalō and all the way to Hālawā
 - Sybil Lopez: Mahalo Commissioner
 - Andrew Choy: Other questions or comments
 - Cora Schnackenberg: I have another, might be for a Council Member but I'll address to Chief
 - Are you folks able to negotiate any type of recycle water for our community that is living on the east side of the island
 - Chief Ventura: That's not something our department would be able to leverage
 - Probably conversation for the Water Department
 - Cora Schnackenberg: So maybe I should speak to Council Member Keani
 - What is the plans of the recyclable water that is currently being flushed, both housing / domestic use and fire hydrants
 - Would like to ask that Ahonui be considered in obtaining the recycled water
 - Council Member Keani: Aloha Cora, mahalo for your question
 - Mahalo for clarifying the water you're referring to
 - That water is something the Water Department wants to be used
 - As I committed to before, I will help to facilitate those discussions between the Water Department and the community

EXHIBIT D – MEETING NOTES

Beneficiary Consultation: MFD Access Easement Land Use Request - Ualapue, Moloka'i

Virtual Beneficiary Consultation Meeting

June 23, 2021, 6:00 pm to 7:30 pm

- It's just a matter of logistics
 - Working on a schedule so the community would be aware of when the department would be flushing and
 - Community having the necessary equipment to store the water
 - Can get into more detail offline
- Cora Schnackenberg: Mahalo Council Member Keani
 - Mahalo everyone, thank you
- Andrew Choy: Are there other questions, comments folks have regarding this request that you'd like to ask right now?
 - Or comments you'd like to make?
- Gigi: Faye has her hand up
- Andrew Choy: Thanks for pointing that out, Gigi
- Faye (Liko Wallace): I'm in support of the easement
 - I don't have any question
 - Thank you
- Andrew Choy: Mahalo Liko for that comment
 - Others with questions or comments?
- Lloyd: With Na'iwa Road Project
 - We want to support that project as well
- Andrew Choy: Mahalo Lloyd
- Cora Schnackenberg: Aloha, I have my mom here
- Auntie Judy (Cora's Mom): Aloha, I'm talking from experience
 - I love you guys but I'm not for it because it's taking up our space
 - You know how long we've been waiting?
 - I was supposed to be up there, on homestead
 - You know how many years that is?
 - I say no
 - You guys gonna have a fight on your hands if you do it that way
 - I know we suffered a lot
 - A lot about water
 - We supposed to have free water
 - We supposed to have the land
 - We no more space already
 - Everybody robbing us from our land
 - So what you guys talking about?
 - I'm not for it
- Andrew Choy: Mahalo for that comment
 - Are there other comments?
- Cora Schnackenberg: I'm going to reserve
 - Going to speak to DHHL and Maui County
 - Thank you
- Andrew Choy: Others want to share their mana'o on this proposed use of Hawaiian Home Lands?
 - Or any other information you'd like to have at this point?
- Charity Kekauoha: I'd like to say something

EXHIBIT D – MEETING NOTES

Beneficiary Consultation: MFD Access Easement Land Use Request - Ualapue, Moloka'i

Virtual Beneficiary Consultation Meeting

June 23, 2021, 6:00 pm to 7:30 pm

- I'm a homesteader on Ho'olehua
- I think it's great we have a fire department on the east side of Moloka'i, however
 - I don't believe as a DHHL resident we should give up a fragment / partial to make it happen
- Don't want to sound unreasonable, however, it feels like we're put on the spot as lessees that if we cannot move forward because there's a lot of people on the waiting list for homestead
- I'm fortunate I'm on homestead at my age, at 54
- I'm from Nanakuli and my home, my new residence is here on Moloka'i
 - I love Moloka'i
 - The people
 - Land
 - Everything about Moloka'i
- It's so sad we have to give up something
 - I wish somehow our delegates, County, State, DHHL can work on something that can benefit the lessee as well as the community instead of taking away from one or the other
- It is my own mana'o and I know everybody's working hard to better Moloka'i and to better things, but there's gotta be a better way because when you take away just a little fragment, a parcel from DHHL, you're taking away from somebody who is on the waiting list just so you can move forward with something else
- I know the State has property
 - Maybe there's another way
 - Or there's a timeline and everything gotta hurry up and rush
 - Rush this, rush that
 - How many years has this been on waiting
 - How many years has this been in the work
 - Now it's a rush
- Forgive me if I say anything that is not respectful, but I am a DHHL lessee and I love Moloka'i and I love where I come from, Honolulu / Nanakuli, and I wish the best for all us Hawaiians that been on the waiting list
 - My parents died on the waiting list
 - I hope my family no have to die on the waiting list because Hawaiian Homes, County, State is making decisions for the people and not listening to the people
- Please forgive me if I'm being disrespectful to anybody
- I'd like to see Moloka'i move ahead
 - We need fire department out there
 - We need a lot of things on Moloka'i to make it better for the people
 - That is the bottom line, for the people
- That's all I have to say
- Thank you
- Andrew Choy: I see two hands up
 - I'm going to call on Mahina and then Faye (Liko)
- Mahina Poepoe: I'm speaking on behalf of myself in support of the easement
 - I myself am not on the waitlist but my genealogy tells me that I could be if I wanted to be

EXHIBIT D – MEETING NOTES

Beneficiary Consultation: MFD Access Easement Land Use Request - Ualapue, Moloka'i

Virtual Beneficiary Consultation Meeting

June 23, 2021, 6:00 pm to 7:30 pm

- However, I feel like that would be a little selfish considering I have a stable living situation
- I don't want to take up space so that's a conscious decision but if that would make my voice more meaningful then I guess I'll have to look into that
- I want to speak in support of the easement
 - I don't believe any of the requested space is necessarily taking away area that would be used for housing, especially the east driveway
 - Mana'e just have a significant population of Native Hawaiians and beneficiaries and waitlisters
 - I know that DHHL does realize that contributing to this effort to keep this critical emergency service in the district is providing critical services to your beneficiaries of whom I am one of them
 - My dad was a retired Fire Captain
 - He was also a waitlister
 - He died waiting
 - Before he died the Fire Department responded to our home and was able to help him
 - This may not actually put people on the land directly but may very well save the lives of those who are waiting
 - I just don't want that benefit to get lost in the attempt to nickel and dime
 - For me I'm very supportive and I just want to also share that it's not really bargaining
 - It seems like it is, but it's not really bargaining with the Department or County
 - The County or the Department are not going to suffer or face the consequences of removing the station
 - I actually think, from an operational and budgetary standpoint, they'll save money
 - Who's going to suffer is the community and is beneficiaries and is waitlisters
 - That is our kūpuna
 - Our families
 - Our children
- That is not something that I am comfortable with leaving hanging in the balance so for me it really is a yes or no answer
 - No would be disappointing and unfortunate
 - The fire station will very likely move to town and we'll lose coverage
 - If that's going to be the case, then we need to start planning for that
 - If the answer is yes
 - What a relief
 - The district and our community will be that much safer for years to come
- The truth is that the fee simple property is not going to be held for much longer
 - The owner agreed to hold it while we do these meetings, but they're not going to hold it for much longer
 - That's the purpose for expediting the process
- Thank you that's all I wanted to share
- Andrew Choy: I'm going to Liko, Commissioner Helm, Yolanda, then John

EXHIBIT D – MEETING NOTES

Beneficiary Consultation: MFD Access Easement Land Use Request - Ualapue, Molokaʻi

Virtual Beneficiary Consultation Meeting

June 23, 2021, 6:00 pm to 7:30 pm

- Commissioner Helm: Andrew, before you have the next person to testify, my wife would like to testify as a beneficiary as well
 - Can she do that
- Andrew Choy: Okay
- Commissioner Helm: Whenever it's her turn
- Andrew Choy: Okay, I will call on her after John
- Commissioner Helm: Thank you Andrew
- Andrew Choy: Liko, Yolanda, John, Commissioner Helm's wife, then Mango
- Liko: Thank you Andrew for giving me the opportunity to speak
 - I've attended the meetings that the Fire Station / Department has been having on the east end
 - Stating the concerns of the area that the station is currently at
 - It's been at a disrepair for a really long time as the Chief had talked about
 - Over two years
 - It hasn't been something that just happened
 - It's been an ongoing
 - Looking for a place on the east side that wouldn't hinder any cultural sites, so many things to consider that has been on the floor to consider that has made it very difficult
 - Finding this location and asking for the areas that they are asking for, basically the one on the east side
 - Basically a driveway anyway
 - It would just be broadening the driveway
 - I understand the fencing part
 - I agree with that
 - I would expect them to put a fence or something to protect any people from being in the way of the driveway
 - I look at it like how you look at Maunaloa School or Kilohana School
 - Once you close these schools, to open one back up in the location or district it's currently in might not happen
 - Zachary talked about the area covering from Kanalo to Hālawā but in reality they go to the backside of the island also so it goes even beyond Hālawā
 - Beneficiaries are right there
 - They would benefit from having the fire station on the east side
 - Another way they would benefit is it would keep their house insurance at a reasonable price
 - Without having a fire station in the area, that would jack their insurance up
 - To me, I think it's beneficial to be asking that 15 feet on the east side and 30 on the west so they can park it
 - This is a community
 - We work
 - We live
 - We play
 - We talk as a community
 - I'm not looking as a tourist on the east end

EXHIBIT D – MEETING NOTES

Beneficiary Consultation: MFD Access Easement Land Use Request - Ualapue, Moloka'i

Virtual Beneficiary Consultation Meeting

June 23, 2021, 6:00 pm to 7:30 pm

- We have families that live there forever and they'd be deprived of having immediate response should anything happen so I think it's necessary for myself, born and raised here, I think it's a good thing
- I don't look at it as infringing on anyone's benefit of a property on that side
 - Especially on the side that they're asking
- Sorry for being so long winded
 - Thank you for giving me the opportunity to speak but I think it's a good thing and I stand in strong support of it
 - Mahalo
- Andrew Choy: Mahalo for your comments
 - Yolanda
- Yolanda Tanielu: Aloha
 - My concern, and this is a question
 - Is the Fire Department paying for DHHL land usage or DHHL donating the `āina or are we paying for it
 - I would like to have an honest answer please
- Andrew Choy: At this time, we haven't negotiated the terms of the agreement with the County so if that is one of the items that you would like to see included in the terms of an agreement, that's something the Department could certainly have the conversation with the County on
- Yolanda Tanielu: That would be, to me personally and I am a homesteader, but I'm also from Mana'e and, yes, the Moloka'i Fire Department there is needed
 - It is
 - I'm not saying that it's not
 - Just that I see too many of our `āina being used and donated and the people that living on the `āina, the homestead land, we paying taxes
 - I feel like, wait a minute, everybody should be paying taxes, especially land tax
 - That's my issue right now
 - I understand our Fire Department needs a place and what not
 - That's fine
 - That's good and well and done
 - But you also have to remember there are some of our families waiting on the waiting list
 - You have a long history of people waiting
 - I understand that
 - But I'm also a person that is thinking about getting ag land on the east end side because that is where my family is from and I just wanted to know who is going to pay for the usage of this `āina and if we have to pay for it like everything else then you guys should be paying your portion as well
 - Mahalo
- Andrew Choy: Mahalo for your comments
 - John and then Commissioner Helm's wife
 - Then Mango
 - Then Dickei
 - Then Alma
- Zhan Dudoit Lindo: I come from the east end of Moloka'i

EXHIBIT D – MEETING NOTES

Beneficiary Consultation: MFD Access Easement Land Use Request - Ualapue, Moloka'i

Virtual Beneficiary Consultation Meeting

June 23, 2021, 6:00 pm to 7:30 pm

- I was born and raised there so plenty kuleana on that side just like Mahina
- I just wanted to share my history on this project
 - Back when Uncle Ron Davis was the Chief, this became one of the most important things based on the community's desire to have emergency services in Mana'e
 - He made this a reality but we knew from its inception that we would have to move so from that time until now it's always been looking for a facility, looking for some place that met the qualifications and the standards
 - A lot of the pushback, even at Kilohana, came from the balance between how do we take care of our archaeological and cultural inventory, how do we take care of our people
 - What's that balance
 - What does that mean to us
- Here we are now and I heard somebody say that this was a rush
 - Actually, this wasn't a rush
 - This was something that was talked about for a long time
 - I want to clarify that the rush is that the owner of this property can decide not to wait for us and to sell the property before we have the chance to go through all of the necessary community engagements
- As somebody who works for Council Member Rawlins-Fernandez, I just like say I work for the County, but I'm a keiki o ka 'āina of Mana'e
 - I was born and raised there
 - My 'ohana
 - My 'ohana's iwi
 - They all on that side
- Just like Mahina, my heart is that we no become so focused on what we gotta get to make this happen and the idea that we operating as one oppressed people trying to get something that we miss out on one blessing and I not coming against anybody, I just speaking as a resident
- My heart is sore because I cannot be on Moloka'i because I taking turns to care for my mother
- My personal testimony is a month ago I would've said easily to everybody, my Papa said you like live Moloka'i, you gotta make do with what get
 - What no more, no more, but that's the price we pay for live on this beautiful `āina
 - A month ago my mother had one terrible accident and it took almost 40 minutes to respond to her in Maunaloa and that's one straight shot
 - I testified at the County meeting about this
 - My mom would not have survived if she was in Mana'e and they had to respond to her from Kaunakakai
 - Look at this whole scenario in a very different way when your family is dependent on every minute in order for them to live
 - All of a sudden, perspectives and priorities become a big deal
 - So I would just like to say that as a homesteader and resident of Mana'e, I fully support the Fire Department
 - I've done, personally, a lot of work in making sure we take care of our people and we don't take away from anybody

EXHIBIT D – MEETING NOTES

Beneficiary Consultation: MFD Access Easement Land Use Request - Ualapue, Moloka'i

Virtual Beneficiary Consultation Meeting

June 23, 2021, 6:00 pm to 7:30 pm

- So I just wanted to say that I support and I really appreciate everybody on this call and the Department, and the staff, and DHHL so I hope we can come up with something really good for everybody
- Mahalo
- Andrew Choy: Mrs. Helm and then Mango, Dickei, and Alma, then I saw there was a comment in the chat we can read after these folks talk
- Henrietta Helm: Thank you very much
 - I recently retired with Maui Police Department as the Emergency Services Dispatch Supervisor
 - I want to say I am in support with the Maui Fire Department's request
 - We're only talking about 15,000 square feet
 - This is just to allow easement for their apparatus to get from the main highway to their station and access out when they're responding to their calls
 - I don't see much property being taken away from Hawaiian Homes
 - In regards to the cost that might be incurred, that has to be negotiated between Hawaiian Homes Department and the County
 - The only thing I'm worried about is if this proposal or request is not passed, the Fire Department is going to lose that property
 - If they should lose that property and the property they are currently located in Pūko'o, it will be a major impact to the residents and the visitors to the east end of Moloka'i
 - The response time if Fire Department is to respond from Kaunakakai Fire Station to Kamalō, that is only 10 miles out of town, it would take them a good 20-25 minutes and 20-25 minutes to someone's life who is having a CVA which is a stroke it could be fatal
 - If someone is having a heart attack and no one at the residence knows CPR and you do not have an AED at the residence, that person can die and most likely it's going to be a resident and not a visitor so people who live in that area they should be blessed and fortunate that they will have access to medical first responder, fire response should they have a house fire, any type of fire, brush fire
 - Fire Department is gonna be your neighbor right there for you
 - Not going to take them 25 minutes to respond if you're living right there in Ualapue
 - Now you can imagine if the Fire Department had to respond from Kaunakakai Fire Station to Hālawā Valley for a child that's drowning in that location
 - It takes them an hour and a half to get to that victim
 - We've lost a lot of children out there
 - I've worked with Police Dispatch for over 31 years and we have lost a lot of children out in Hālawā Valley because of drowning
 - We have lost children in Pukuo area, right there by current Fire Station because of drowning
 - Everyone has to look at their priority
 - How much do you value your life
 - Or value your loved one's life
 - Cannot put a price on it
 - That's all I want to say
 - Thank you very much

EXHIBIT D – MEETING NOTES

Beneficiary Consultation: MFD Access Easement Land Use Request - Ualapue, Moloka'i

Virtual Beneficiary Consultation Meeting

June 23, 2021, 6:00 pm to 7:30 pm

- Andrew Choy: Mahalo Henrietta for your comments
 - Mango then Dickei, then Alma, then Sybil put a question into the chat that we'll get to after we get through these
- Mango Stephens: Mahalo Andrew
 - I wanna say mahalo to Auntie Henrietta for giving us those times
 - Everybody knows me as Uncle Mango but my real name Phillip Naono Pillani Stephens
 - I am a waitlister and successor on the island of Moloka'i
 - I live on the east end, but I need to tell you about something that happened thirty something years ago
 - I was trained as a dive paramedic
 - I spent two, two year sessions
 - The reason for that is I was living in Maui and when you have a incident that happens around the Pali area
 - And a lot of our local people used to go down to Olowalu
 - From Olowalu down to Pot Mountain, all the way to the Pali
 - You couldn't get anybody from Lahaina or Paaluhi to get there in any time
 - Like Auntie said, you have a heart attack, stroke, or even an arterial damage where you have blood coming from an artery, there's a number of different things that I had to deal with
 - Luckily I was in the area and able to be there for the people until the paramedics got there during those times
 - I can't tell you what it is like when they can't get there, especially, at least on that island, you've got traffic to cause a problem
 - Over here, we just got a road that is one way and that's all there is to it
 - I am a waitlister and I will say that I am completely pono with what you folks want to do
 - I also want to make a comment that you might not have mentioned it, but it was mentioned at another meeting that we had that that particular east side that you folks are requesting as an actual easement on that particular piece of property, nobody could live on that easement anyway
 - The County and the Fire Department are going to make that road passable for not only the Fire Department, but they're making it for those properties
 - Anybody who is on the Ahonui side of this, that is going to be our access to the properties at this point
 - They're not really asking to take away anything that we would be living on
 - That is an actual easement that they're asking to utilize but also giving back to us as well
 - Again, I just want to say I completely back you folks up on that and I love everybody and a hui hou
- Andrew Choy: Mahalo Mango
 - Next is Dickei then Alma, then we'll get to Sybil's question in the chat
- Dickenson Stone: (audio distorted throughout Dickei's section)
 - We all need it, we need them
 - We all going get hurt one of these days
 - We all going get...

EXHIBIT D – MEETING NOTES

Beneficiary Consultation: MFD Access Easement Land Use Request - Ualapue, Moloka'i

Virtual Beneficiary Consultation Meeting

June 23, 2021, 6:00 pm to 7:30 pm

- It's a no brainer, we need this
- All of a sudden, it happens
 - I'm happy that it happened
- If there's anything the Department of Hawaiian Home Lands can do anything that you folks need..
 - ... the department... the Fire Department, by all means you guys can take a strip of my piece when I get awarded
- It's a place for them and a win-win situation for everybody
- Aloha
- Andrew Choy: Mahalo Dickei
 - Just a quick request of you because, on my end, you were cutting in and out a little bit
 - If you don't mind summarizing your comments and putting it in the chat, that will help to memorialize your comments
 - Thank you
 - Alma and then Sybil's question in the chat
- Alma Gamiao: I am a mother of a firefighter
 - I have a son-in-law who is also a firefighter
 - And also a waitlister
 - I've been waiting since 1966
 - A long time
 - I finally got a homestead in Ho'olehua but now I'm looking for an ag lot
 - I am fully in support of not only because of my children who are firefighters, but because I really don't see the problem of why we cannot give a little portion on the east side so our fire engines can get in and be there for us
 - I am in the Ahonui group and we are in support, well I am in full support to help get this new building on the road
 - It's been so many years that this project has been going on and on
 - I watched my son-in-law work at Pūko'o Station for many years
 - Watched the conditions they were in
 - That place is falling apart
 - We need to get them out of there and need to get a better place for them
 - I think Ualapue is a perfect spot because there's a school there and, if there's any emergency, our fire helicopters can come in and rescue
 - When they had an incident in Pūko'o, when they had to call the fire helicopter in, that place was so dangerous
 - So much wires all over
 - Watched them
 - But they did it
 - They helped save a man who got bit by a shark long time ago
 - Couple years ago I watched that
 - Also I need to get our paramedics out here
 - There's only one station
 - My son is a paramedic here also and he has to travel throughout the whole island

EXHIBIT D – MEETING NOTES

Beneficiary Consultation: MFD Access Easement Land Use Request - Ualapue, Moloka'i

Virtual Beneficiary Consultation Meeting

June 23, 2021, 6:00 pm to 7:30 pm

- It would be nice if we could add a paramedic station out here on the east end in the future
 - Right now, they are handling the whole island
 - If it wasn't for the firemen, the Fire Department to be first there on call, we would have lost a lot of people, our people
 - Thank you Fire Department
 - You guys are awesome
 - My son has nothing but praise for you folks because you are there before the paramedics are
 - Thank you everybody for pushing this ahead
 - We need to get our Fire Department in a better place
 - I'm speaking from my heart
 - I'm speaking for my children
 - I'm speaking for the people out here on the east end
 - I was raised here in Mana'e and I would like to live here, which isn't too long cause I'm getting old
 - Thank you everyone for your time
 - Thank you everybody for everything you're doing for us
 - This comes from my heart and I love you all
 - Aloha
- Andrew Choy: Mahalo Alma
 - There was a question in the chat
 - I think, Chief, if you can answer this question
 - If there was a call to respond to Hālawā, what would be the response time from Kaunakakai versus the response time from Ualapu'e
- Chief Ventura: The difference in the stations is about 25 minutes
 - However, the response time from Kaunakakai as it mentions also in the chat is all the way to Hālawā would be about an hour and a half
 - Especially once we get out to the far east end, the big engine can't go quickly
 - Road conditions get narrow
 - We have to slow down so it's about an hour and a half to Hālawā
 - The difference in time is basically 25 minutes
 - Kaunakakai would be behind the Pūko'o crew
- Andrew Choy: Thank you
 - I see Cora has her hand up
- Cora Schnackenberg: Thank you
 - I really appreciate everyone's comment
 - I want to share this
 - Being on this with all of you, I have to keep in mind several things
 - I have benefitted from this Fire Department in Pūko'o
 - My dad had respiratory problems and he had used them
 - Not only for medical
 - Also when people get flat tire, they right there to put air

EXHIBIT D – MEETING NOTES

Beneficiary Consultation: MFD Access Easement Land Use Request - Ualapue, Moloka'i

Virtual Beneficiary Consultation Meeting

June 23, 2021, 6:00 pm to 7:30 pm

- My daughter... there are personal stories we all have that is very helpful having the Fire Department there
 - I'm one that had benefited
 - I'm also in a role that represent the waitlisters that been waiting and waiting
 - Not only waiting, but they are victims of companies that are non-Hawaiian entities that totally take advantage
 - And the line goes further, longer and longer
- I am speaking for all of those who have been waiting and died on the waitlist
 - My heart is to support
 - But I wanted to speak to the Department and with Maui County because even if it's an inch it is still land that our people are entitled to
 - I know that seems petty, but not for those that died on the waitlist
- I totally support what the Fire Department is doing with conditions and that is to support our people
- It's not about if you like this, I like that
 - No, a'ole
 - I don't like to be in a position when they say if you guys no give us this, then we going have...
 - It shouldn't be blackmail situation
 - It should be done pono
 - It should be done in a business like situation and so I wanted to share that out of love that I'm here and I know the benefits of our Fire Department because I am one that have benefit that so I'm here to share and be the voice of those that aren't on this and just to share that there's got to be a middle ground and I think that fence that I spoke about earlier is the beginning and I really appreciate the opportunity to share my mana'o with love and also with the Department I ask that I'd like to schedule a meeting with you and also the County Fire Department
- Mahalo
- Andrew Choy: Thank you Cora
 - I don't see any other hands up at this time
 - I'm looking at the clock
 - It is 7:15
 - We had scheduled the meeting to go to 7:30
- Cora Schnackenberg: Wait, my mom is here
- Auntie Judy: I'm so sorry
 - Our first thing is about that it was so important for us guys, but you know the way it was said we caught up to like... I don't know how you can say it... nowadays they so tricky in the way they talk and yet they change things around
 - That's why it was really hard
 - For me, I am for our forces, everything
 - But the way people talk is a trip
 - The way they talk is not right
 - I know that God is the one that supplies all our needs

EXHIBIT D – MEETING NOTES

Beneficiary Consultation: MFD Access Easement Land Use Request - Ualapue, Moloka'i

Virtual Beneficiary Consultation Meeting

June 23, 2021, 6:00 pm to 7:30 pm

- Everything on this island, we no can take it with us when we leave, but it's to the generation to come
 - That's what it's to be used for
- I thank the Lord because I'm so sorry the way I said it but I never meant it that way
- I wanted to hear everybody saying the things that was supposed to be said
- You know what, it is love that we get everything together because it's our people
 - This is our place
- I'm really sorry the way I said it and I love you guys and I thank you Jesus that we can be over here to say what we want to say and make it right
- Amen
- Aloha
- Andrew Choy: Mahalo Auntie Judy
 - I see Godfrey's hand is up
- Godfrey Akaka: Aloha
 - What's up Chief Ventura, good to see you
 - You looking handsome still yet
 - I'm a Ho'olehua homesteader
 - Retired Fire Captain with the Maui County Fire Department, 27 years
 - I live Ho'olehua so the decision I think to make regarding the Mana'e Fire Department really relies on the people in Mana'e
 - What do they want
 - I'm not going to say whether I support or don't support because I honestly haven't seen the location where it's being put up but I will say that I have worked in Pūko'o many years and even with Mahina's dad, Doug Lopes, and we serviced the community and we helped a lot of people out there
 - I know how critical and important the Fire Station is out in Mana'e
 - I was even present when Chief Davis and Chief Lindo went and put that station out there
 - For years, what Jan said, I just want to testify and back up what they said too
 - For years, we knew we needed to move
 - This was a long time, at one time there was a location but that got shut down
 - I wanna share with you guys the station is well needed
 - The emergency service is needed
 - Here, Ho'olehua Fire Station where I live, is on Hawaiian Homestead land
 - I will tell you that for me I feel proud
 - Very proud our Fire Station is on Hawaiian Homestead land
 - I've also personally received emergency services for one of my sons
 - He got shot
 - Had to get shipped out and time was of the essence
 - Even though was only oxygen that was needed, they had the oxygen to help him
 - Life is hard to put one price on that and that's all I wanted to share
 - I support the Fire Department
 - I support all that they stand for
 - I support the emergency services
 - I support all of the people that had helped to put this together

EXHIBIT D – MEETING NOTES

Beneficiary Consultation: MFD Access Easement Land Use Request - Ualapue, Moloka'i

Virtual Beneficiary Consultation Meeting

June 23, 2021, 6:00 pm to 7:30 pm

- I know it's not easy because the process is very long and very difficult
- That's what I wanted to share with you and the community
- Mahalo
- Andrew Choy: Mahalo Godfrey
 - I thought I saw Dickei raise his hand but he lowered it
 - Dickei, did you have anything else to add?
- Dickei: I just wanted to say I'm in full support of this Fire Department
 - I hope the DHHL can help them in any way, in whatever way they need to make this thing possible
 - To make this thing happen
 - We all need it and that's it
 - Thank you
- Andrew Choy: Mahalo Dickei
 - Hana raised his real hand
- Battalion Chief Hanalei Lindo: Sorry, I got on late so I missed all of the wonderful conversation, but I wanted to throw some input
 - My name is Hanalei Lindo
 - I'm a Battalion Chief with Maui Fire Department currently
 - I'm Moloka'i homegrown
 - I live on Hawaiian Homestead in Ho'olehua
 - So blessed to be a part of our island, our people, our community, and a homesteader working hand in hand with the Department of Hawaiian Homes
 - We were fortunate, especially as a department, to work on a couple of different projects and being allowed to do a couple of things to enhance our operational capacities as firefighters on the island and even with our Ho'olehua Fire Station and the Department of Hawaiian Homes allowing us to be placed there and have a presence and also expand is truly awesome
 - We thank you guys for having this meeting and opening up the possibility of what we're asking for
 - Down on the east end, we've been fortunate to provide a station that has emergency services
 - Taking, as best as we can, the care of the community of Mana'e
 - We're in a place where, and you probably heard testimony from a lot of people the conditions of the Pūko'o Station as it continues to break down and we're at a dire point where we possibly could reach that timeframe where we gotta get our guys out and no longer have a presence on Mana'e
 - That would take away from the community and helping out
 - And the response times would be crazy coming out of town
 - This opportunity right here is absolutely one godsend
 - Things are lining up but we need your support to continue to make this happen
 - Thank you for our Hawaiian people and our community members supporting the Fire Department
 - Just know if this doesn't happen then the possibility is we not going have any presence down there
 - We who choose to live on Moloka'i gotta be alright with that

EXHIBIT D – MEETING NOTES

Beneficiary Consultation: MFD Access Easement Land Use Request - Ualapue, Moloka'i

Virtual Beneficiary Consultation Meeting

June 23, 2021, 6:00 pm to 7:30 pm

- From my heart, my hope is that the Department of Hawaiian Homes will continue to support the commitment to emergency services by allowing this easement to happen and we'll work on all of these things together to benefit not only us but the Department of Hawaiian Homes and the community
- Thank you for hearing us out and allowing the community members to voice their opinions and their concerns
- That's all I wanted to say
- Thank you
- Andrew Choy: Mahalo for your comments
 - I see Sybil's hand is up
 - Go ahead Sybil
- Sybil Lopez: Mahalo Andrew
 - Mahalo Chief and the County for doing a presentation tonight with our beneficiary consultation
 - Mahalo Commissioner for being here and listening to what we have to say and Council Member as well for taking notes
 - I ask those questions because we well know on the east side of our island, when you say ocean rescue, majority of us is in the ocean
 - There's so much lawai'as over there and the keiki, we no more much area in town to go to the beach so majority of the island does end up on the east end, in the water, in the ocean, and there's a lot of activities in the ocean that we participate in
 - Our family frequents there
 - My kids own in that area
 - We have ranch in that area, on Mana'e side so very tied to the Mana'e community
 - I just wanted to read from the 2018 Moloka'i Island Community Plan
 - It does say that the population served in that area is 1,782 that you guys service within the Pūko'o Fire Station and wanted to confirm it is from Kamalō to Hālawa Valley
 - The response time, like Auntie Henrietta did express, is 20-25 minute difference to save a life
 - Just hearing the stories already, that's real life
 - Real life we have to consider on a daily basis
 - Whether a regular house fire call
 - Domestic violence to medical
 - And back to our ocean where many of us frequent
 - I highly respect and mahalo for having that Pūko'o Fire Station and hoping we can have that in that Mana'e area to service that community
 - Whether it is the population of 1,700 or those going from Kaunakakai to Hālawa Valley just for a beach day versus Ho'olehua because all of our island somewhere or another goes into the Mana'e community and you never know what going happen on any given day
 - Like God said, tomorrow is never promised to us
 - Life is what we consider as a priority
 - I do understand the DHHL lease lands and understanding the waitlist
 - When you requesting 15,045 square foot of an easement
 - You taking out 6,000 square feet on the east side
 - You taking 6,000 square feet on the west side

EXHIBIT D – MEETING NOTES

Beneficiary Consultation: MFD Access Easement Land Use Request - Ualapue, Moloka'i

Virtual Beneficiary Consultation Meeting

June 23, 2021, 6:00 pm to 7:30 pm

- You taking out 3,265 on the north side
- Some of those square footage like you mentioned earlier is already populated by government road
- Some of those are already roadways so if you consider the waitlist and look at the numbers that are growing, Moloka'i alone, Andrew can correct me, should be about in the 2,000 just for Moloka'i
- In that proposed development in Ualapue, you looking at, you can correct me if I'm wrong, almost 175 homes, from 75 to 175 homes to be developed per the Moloka'i Island Plan of DHHL since 2005
- So you going see an influx of more people
- That population going up, 1,782
 - That was 2005
- Looking at more development in the next 5 to 10 years
 - That's more lives that this Fire Station would have to compensate for and serve
- Then you go back to the 15,000 square feet that is requested on this easement and you look at the square footage that is already taken by these government roads and these roadways and how much can you actually fit
 - How many are you taking away if the DHHL going propose 6,000 square feet per waitlist to get them off of the waitlist, that's maybe 2 waitlists we can get off the 2,000 waitlist
- So there's a lot to consider and weigh when your priority is to save a life, looking at future development to house 75 to 175 more homes in the Ualapue development
 - We all gotta think about it
 - Even when Auntie Liko said once we lose em, we indefinitely
 - Look at Maunaloa, when Maunaloa had their Fire Station
 - Look now today, you drive up there, they no more
 - But you hear them, you hear Papohaku, you hear Maunaloa asking for one Fire Station
- So it's very vital to understand and weigh out what is being proposed so mahalo again for allowing us to speak
- Thank you
- I really want hope that DHHL can be more transparent if there are any more community meetings that you're proposing, like I heard someone propose earlier to the County
 - I really hope you do include the beneficiaries and Commissioner to be a part of those meetings as well if you're considering any more future meetings
- Mahalo
- Andrew Choy: Mahalo Sybil for your comments
 - I see two more hands up and also note that it's 7:30
 - First Aulani, then Mango
 - After that, will quickly go over next steps in our consultation process
- Aulani Herrod: I am Ana Keama's mo'opuna
 - I am also a daughter of a Fire Captain
 - A niece, by blood, to a fireman
 - And a niece, not by blood, to many firemen

EXHIBIT D – MEETING NOTES

Beneficiary Consultation: MFD Access Easement Land Use Request - Ualapue, Moloka'i

Virtual Beneficiary Consultation Meeting

June 23, 2021, 6:00 pm to 7:30 pm

- My uncle is also a paramedic so I was raised around the lifestyle of first responders and like Grandma mentioned, my dad has worked at Pūko'o Fire Station for years so we have experience with the whole living situation over there and we know how important it is to give the Fire Department the right honua or refuge or safe place
- My grandma has been on the waitlist but she still sees how waiwai the relocation of the Fire Station is
- If I was a beneficiary myself, I'd also give up a portion of my land too, just like Anakala Dickei said
- I am in full support of our first responders
- I am so grateful for the services they provide
- It is kūpono for our community to have them in an area where they can access people or vice versa in a quick manner especially knowing my kūpuna are out on the east end in Honouli by themselves
 - It really eases my nā'au knowing there is emergency services so close to them
 - As a kaiāulu, as a community and as a lāhui, I can only hope that we support those who really support us and that is my manao
- I am in full support of the easement
- Mahalo
- Andrew Choy: Mahalo Aulani
 - Mango, go ahead
- Mango Stephens: Aloha everyone, I'll just make this real quick
 - Now that I'm a kahu I look at things a little differently once in a while
 - I'm going to put it stripped
 - It's going to be rough on some people's ear
 - I don't know how many people would actually be willing
 - I'm on the waitlist
 - I've been waiting for a long time
 - My mother's been waiting for a long time
 - I know many people waiting
 - I don't know any of us who would be willing to fight for that at the loss of somebody's life
 - If we don't keep that Fire Station on the east end, we are not going to be there to help people who need their help
 - To say that we cannot
 - I apologize to those who do not want to back this up
 - That's the only way I can look at it
 - Right now, we're just looking at the possibility of taking away the help for people that could lose their life because of something that we choose that, to me, is actually selfish
 - I want my own land
 - I got seven children and nineteen grandchildren
 - I need something to leave for them
 - But if any of them come here, I hope these brothers are out here when my children go swimming and they get in trouble or when something happens physically for them
 - God bless you all

EXHIBIT D – MEETING NOTES

Beneficiary Consultation: MFD Access Easement Land Use Request - Ualapue, Moloka'i

Virtual Beneficiary Consultation Meeting

June 23, 2021, 6:00 pm to 7:30 pm

- Andrew Choy: Mahalo Mango
 - I think that is a good comment to end on
 - Mahalo everyone for sticking with us
 - I'm just going really quickly over next steps for the Department's consultation process so you all are aware of what is coming up next
 - Next steps in our consultation process
 - Per our Beneficiary Consultation Policy, there is also a 30 day comment period after we hold a Consultation Meeting to give additional opportunities for our beneficiaries to comment on the proposal
 - That 30 day comment period is from June 23rd to July 22nd
 - You can submit your written comments to dhhl.planning@hawaii.gov
 - I also saw that Gigi put that email address in the chat so for those of you who would like to submit additional comments, please feel free to do so
 - Also if you know of beneficiaries that were not able to attend tonight who are interested in this subject, please let them know that they have an additional opportunity to submit their comments
 - The Department will be compiling all of these comments and presenting them to the Hawaiian Homes Commission in August and we will also, at the same time, be seeking Commission approval or asking the Commission to consider approval of the easement in August so we will package all of the comments we heard tonight and present them, along with seeking Commission approval in August
 - Once again mahalo everyone for taking the time to share your mana'o with us
 - Thank you Council Member Rawlins and Maui County Fire Department for joining us this evening, Commissioner Helm
 - Commissioner Helm, did you want to say something
 - Commissioner Helm: Can I ask that before we close to do a closing pule
 - Can I ask Battalion Chief Hanalei Lindo to do that if he doesn't mind
 - Andrew Choy: Sure, that will be a great way to end
 - Battalion Chief Hanalei Lindo: Absolutely, thank you Uncle
 - Thank you everybody for the comments and for the Department of Hawaiian Homes for allowing this presentation to happen
 - Let's pule
 - Heavenly Father, thank you for this awesome and wonderful time for us to gather; thank you Lord for all the response and the opinions and the hearts that you've brought together, Lord; on a project such as this, we know that it's not small and it's not large, it's whatever it needs to be based on each and every one of our perspectives so allow us to continue to see the love in the midst of all of this; thank you Lord God that you overflow in each and every one of our lives, you place us exactly where we need to be, in the positions that we are Lord God so that as a community we get to come together and kūkā kūkā and to share from our hearts, Lord; we know that you work everything out for the good as you said in your word so thank you, Lord God, for every person here, for all of our family and loved ones, for those who continue to be on the waiting list, Lord, and are waiting for the opportunity to have a place for themselves; thank you Lord God that even in this community, in Mana'e Lord God, that you provide an avenue for emergency

EXHIBIT D – MEETING NOTES

Beneficiary Consultation: MFD Access Easement Land Use Request - Ualapue, Moloka'i

Virtual Beneficiary Consultation Meeting

June 23, 2021, 6:00 pm to 7:30 pm

service to continue to happen as a safety venue for our people, Lord God; in order to save lives and to continue to help and foster growth in this place, Lord God; allow love to always be the essence of who we are, Lord God, because that's what Moloka'i stands for, that's what our community stands for; it's love that brings us together; it's love that bonds us together; it's love that holds us together and love is found in God so thank you for this time, Lord God, and as we go our separate ways, Lord, I pray your protective hand upon each and every one of us, Lord God, and continue to strengthen each and every one of us and allow our opinions to never separate us, Lord; so we just give you all the praise and all the glory and thank you; in Jesus' name we pray; amen

- Commissioner Helm: Thank you Hanalei
- Andrew Choy: Mahalo everyone, I hope you have a good evening
 - Thank you so much
- Commissioner Helm: Thank you Andrew

EXHIBIT D – MEETING NOTES

Beneficiary Consultation: MFD Access Easement Land Use Request - Ualapue, Moloka'i

Virtual Beneficiary Consultation Meeting

June 23, 2021, 6:00 pm to 7:30 pm

Themes

- **Current Situation**

- *Pūko'o Fire Station* -- two man station that responds collectively with our Kaunakakai Fire Station on any major incidents and is/will be the first from Hālawā back towards town. The current station is breaking down and at a dire point. Answers to specific questions include:
 - Couldn't tell you off the top of my head if Pūko'o and Kaunakakai were responding together in the same direction and they were coming towards each other where exactly they would meet, but:
 - If any type of house fire/ocean rescue, then both Kaunakakai and Pūko'o would respond to that.
 - If a medical call and medics were responding with PFS, then medics and PFS would handle itself with the two personnel in the fire truck and two personnel in the ambulance.
 - Service starts from Mile Post 10 in Kamalō and all the way to Hālawā.
- *Response Time* -- difference in response time from Kaunakakai and from Ualapu'e to Hālawā is about 25 minutes. But the response time from Kaunakakai all the way to Hālawā would be about an hour and a half, especially once the big engine gets to the far east end, it can't go quickly as road conditions get narrow and it would have to slow down. As such, Kaunakakai would be behind the Pūko'o crew.
- *Love for Each Other and the 'Āina* -- support for the County and DHHL as well as the community and the 'āina.
- *Inquiry into Recyclable Water Use* -- in response to a question around plans for the recyclable water that is currently being flushed, both housing / domestic use and fire hydrants Councilmember Keani Rawlins-Fernandez indicated that the Water Department currently wants to use the water and is committed to facilitating discussions between the Water Department and the community. She mentioned it involves some logistical considerations and is open to getting into more detail offline:
 - Working on a schedule so the community would be aware of when the department would be flushing
 - Community having the necessary equipment to store the water

- **Positives Expressed by the Community for the Proposed Project**

- *Need for Emergency Services* -- community members expressed a need for a station on the East End so residents and visitors have access to emergency services. This could result in lives saved in contrast to the distance between the current stations and the East End and resulting time it takes to respond and would bring peace of mind for folks who have family and kūpuna in the East End.
- *Improvements to Identified Property* -- no one is currently living on the identified property, which is small in size, and this is an opportunity to address disrepairs on the identified property, which may not be habitable.
- *Road Improvements* -- this opportunity would make the proposed road passable for anyone.

EXHIBIT D – MEETING NOTES

Beneficiary Consultation: MFD Access Easement Land Use Request - Ualapue, Moloka'i

Virtual Beneficiary Consultation Meeting

June 23, 2021, 6:00 pm to 7:30 pm

- *Support for Paramedics* -- the identified location would support paramedics who have to travel the whole island.
- *Support Future Infrastructure* -- the proposed project would support projected population increase in the area as noted in the Moloka'i Island Community Plan. There is also support for plans to put in a swell or bump in the road to divert water.
- **Concerns Expressed by the Community for the Proposed Project**
 - *Land Use* -- easement would take up homestead land.
 - *Timing* -- questions around the sudden rush after years of waiting.
 - *Current Landowner* -- patience of the current landowner of the parcel being considered for the station.
 - *Difficulty in Finding Another Parcel* -- may be difficult to find another parcel that would not hinder any cultural sites
 - *Desire for the County to Provide Compensation* -- should the transfer go through ensuring the County pays taxes on the land from DHHL to support homesteaders, especially those on the waitlist.
 - *Water Use* -- a general concern about water use.
 - *Holistic Considerations* -- how to balance taking care of our 'āina and our people.
 - *Process Considerations* -- should not feel like a blackmail situation.
- **Suggestions Pulled from Community Member Comments**
 - *Community Benefits* -- this is an opportunity to determine ways to create benefits for residents and lessees. One example that came up:
 - Erecting a fence along the east side of the potential easement to provide more security for whoever will be occupying that area.
 - *Share Current Condition of the Property* -- it appeared that current pictures and a description of the property may help with further discussion and decisionmaking.
 - *Share Current Usage* -- it appeared that creating a clear layout of current and proposed usage and related square footage measurements may help with decisionmaking.

Choy, Andrew H

From: Dickenson Stone [REDACTED] >
Sent: Tuesday, July 20, 2021 9:40 PM
To: DHHL.Planning
Cc: Dickenson Stone
Subject: [EXTERNAL] Testimony

Aloha! Department of Hawaiian Homelands, Planning Office

SUPPORT: I, support Community Benefits as stated below to support future waitlisters project for Ualapu'e. Any one of the below conditions would be a suitable community benefit for the access easement. And, that the Commissioners will recommend to Land Use Management Division, Mr. Albino to insert Community Benefits as conditions in Agreement to Land Lease Disposition.

- ☐ Priority 1: That Maui County provide future Ualapuelessees access to free potable water by constructing a Water Tower that is high enough to allow trucks with containers of 250 gallons of water to drive up and fill the containers without having to unload the containers.
- ☐ Priority 2: That DHHL identify and charge the county the fair market value for the number of square footages or land requested (highest value) for the access easement and that 100% of the lease rent be set aside for AhonuiHomestead Association's implementation of the UalapueMaster Plan.
- ☐ Priority 3: That Maui County assist in the construction of paved roads to assist Ualapue lessees to access their homestead lots which will be identified in the Master Plan.

Mahalo,
Dickenson Stone
1-808-658-6919

Sent from my iPhone

From: [Kunani Nihipali](#)
To: [DHHL.Planning](#)
Subject: [EXTERNAL] Testimony
Date: Tuesday, July 20, 2021 10:42:06 PM

Aloha! Department of Hawaiian Homelands, Planning Office

SUPPORT: I, support Community Benefits as stated below to support future waitlisters project for Ualapu'e. Any one of the below conditions would be a suitable community benefit for the access easement. And, that the Commissioners will recommend to Land Use Management Division, Mr. Albino to insert Community Benefits as conditions in Agreement to Land Lease Disposition.

- Priority 1: That Maui County provide future Ualapuelessees access to free potable water by constructing a Water Tower that is high enough to allow trucks with containers of 250 gallons of water to drive up and fill the containers without having to unload the containers.
- Priority 2: That DHHL identify and charge the county the fair market value for the number of square footages or land requested (highest value) for the access easement and that 100% of the lease rent be set aside for AhonuiHomestead Association's implementation of the UalapueMaster Plan.
- Priority 3: That Maui County assist in the construction of paved roads to assist Ualapue lessees to access their homestead lots which will be identified in the Master Plan.

Mahalo,

Kunani a me Ipo Nihipali
Ho'olehua Beneficiaries

Sent from my iPhone

EXHIBIT E

From: Cora Schnackenberg [REDACTED]
Sent: Tuesday, July 20, 2021 9:52 PM
To: DHHL.Planning
Subject: [EXTERNAL] Testimony

Aloha! Department of Hawaiian Homelands, Planning Office

SUPPORT: I, support Community Benefits as stated below to support future waitlisters project for Ualapue. Any one of the below conditions would be a suitable community benefit for the access easement. And, that the Commissioners will recommend to Land Use Management Division, Mr. Albino to insert Community Benefits as conditions in Agreement to Land Lease Disposition.

- Priority 1: That Maui County provide future Ualapue lessees access to free potable water by constructing a Water Tower that is high enough to allow trucks with containers of 250 gallons of water to drive up and fill the containers without having to unload the containers.
- Priority 2: That DHHL identify and charge the county the fair market value for the number of square footages or land requested (highest value) for the access easement and that 100% of the lease rent be set aside for Ahonui Homestead Association's implementation of the Ualapue Master Plan.
- Priority 3: That Maui County assist in the construction of paved roads to assist Ualapue lessees to access their homestead lots which will be identified in the Master Plan.

Mahalo,

Cora Schnackenberg

808-646-0051

Choy, Andrew H

From: Valeny Dudoit [REDACTED]
Sent: Wednesday, July 21, 2021 1:47 AM
To: DHHL.Planning
Subject: [EXTERNAL] Testimony

Aloha! Department of Hawaiian Homelands, Planning Office

SUPPORT: I, support Community Benefits as stated below to support future waitlisters project for Ualapu'e. Any one of the below conditions would be a suitable community benefit for the access easement. And, that the Commissioners will recommend to Land Use Management Division, Mr. Albino to insert Community Benefits as conditions in Agreement to Land Lease Disposition.

- Priority 1: That Maui County provide future Ualapue lessees access to free potable water by constructing a Water Tower that is high enough to allow trucks with containers of 250 gallons of water to drive up and fill the containers without having to unload the containers.
- Priority 2: That DHHL identify and charge the county the fair market value for the number of square footages or land requested (highest value) for the access easement and that 100% of the lease rent be set aside for Ahonui Homestead Association's implementation of the Ualapue Master Plan.
- Priority 3: That Maui County assist in the construction of paved roads to assist Ualapue lessees to access their homestead lots which will be identified in the Master Plan.

Mahalo,
Valeny Dudoit
6589542

Sent from my iPhone

Choy, Andrew H

From: K Farm [REDACTED]
Sent: Wednesday, July 21, 2021 2:44 AM
To: DHHL.Planning
Subject: [EXTERNAL] Testimony

Aloha! Department of Hawaiian Homelands, Planning Office

SUPPORT: I, support Community Benefits as stated below to support future waitlisters project for Ualapu'e. Any one of the below conditions would be a suitable community benefit for the access easement. And, that the Commissioners will recommend to Land Use Management Division, Mr. Albino to insert Community Benefits as conditions in Agreement to Land Lease Disposition.

- Priority 1: That Maui County provide future Ualapue lessees access to free potable water by constructing a Water Tower that is high enough to allow trucks with containers of 250 gallons of water to drive up and fill the containers without having to unload the containers.
- Priority 2: That DHHL identify and charge the county the fair market value for the number of square footages or land requested (highest value) for the access easement and that 100% of the lease rent be set aside for Ahonui Homestead Association's implementation of the Ualapue Master Plan.
- Priority 3: That Maui County assist in the construction of paved roads to assist Ualapue lessees to access their homestead lots which will be identified in the Master Plan.

Mahalo,

Kawika Farm
8088645003

Sent from my iPhone

EXHIBIT E

Choy, Andrew H

From: Okalani Schnackenberg <okalschnack@hawaii.gov>
Sent: Wednesday, July 21, 2021 2:59 AM
To: DHHL.Planning
Subject: [EXTERNAL] TESTIMONY

Aloha! Department of Hawaiian Homelands, Planning Office

SUPPORT: I, support Community Benefits as stated below to support future waitlisters project for Ualapue. Any one of the below conditions would be a suitable community benefit for the access easement. And, that the Commissioners will recommend to Land Use Management Division, Mr. Albino to insert Community Benefits as conditions in Agreement to Land Lease Disposition.

- Priority 1: That Maui County provide future Ualapue lessees access to free potable water by constructing a Water Tower that is high enough to allow trucks with containers of 250 gallons of water to drive up and fill the containers without having to unload the containers.
- Priority 2: That DHHL identify and charge the county the fair market value for the number of square footages or land requested (highest value) for the access easement and that 100% of the lease rent be set aside for Ahonui Homestead Association's implementation of the Ualapue Master Plan.
- Priority 3: That Maui County assist in the construction of paved roads to assist Ualapue lessees to access their homestead lots which will be identified in the Master Plan.

Mahalo,

Okalani Schnackenberg

808-646-0246

Sent from my iPhone

Choy, Andrew H

From: ckward <[REDACTED]>
Sent: Wednesday, July 21, 2021 6:41 AM
To: DHHL.Planning
Subject: [EXTERNAL] TESTIMONY

Aloha! Department of Hawaiian Homelands, Planning Office

SUPPORT: I, support Community Benefits as stated below to support future waitlisters project for Ualapue. Any one of the below conditions would be a suitable community benefit for the access easement. And, that the Commissioners will recommend to Land Use Management Division, Mr. Albino to insert Community Benefits as conditions in Agreement to Land Lease Disposition.

- Priority 1: That Maui County provide future Ualapue lessees access to free potable water by constructing a Water Tower that is high enough to allow trucks with containers of 250 gallons of water to drive up and fill the containers without having to unload the containers.
- Priority 2: That DHHL identify and charge the county the fair market value for the number of square footages or land requested (highest value) for the access easement and that 100% of the lease rent be set aside for Ahonui Homestead Association's implementation of the Ualapue Master Plan.
- Priority 3: That Maui County assist in the construction of paved roads to assist Ualapue lessees to access their homestead lots which will be identified in the Master Plan.

Mahalo,

Christine Ward

(808)646-1335

Sent from my iPhone

Choy, Andrew H

From: Uilani Schnackenberg [REDACTED]>
Sent: Wednesday, July 21, 2021 7:18 AM
To: DHHL.Planning
Subject: [EXTERNAL] Support of Community Benefits - Ualapu'e

Aloha! Department of Hawaiian Homelands, Planning Office,

SUPPORT: I support the Community Benefits as stated below to support future waitlisters projects for Ualapu'e. Any one of the below conditions would be a suitable community benefit for the access easement. And, that the Commissioners will recommend to Land Use Management Division, Mr. Albino to insert Community Benefits as conditions in Agreement to Land Lease Disposition.

- Priority 1: That Maui County provide future Ualapue lessees access to free potable water by constructing a Water Tower that is high enough to allow trucks with containers of 250 gallons of water to drive up and fill the containers without having to unload the containers.
- Priority 2: That DHHL identify and charge the county the fair market value for the number of square footages or land requested (highest value) for the access easement and that 100% of the lease rent be set aside for Ahonui Homestead Association's implementation of the Ualapue Master Plan.
- Priority 3: That Maui County assist in the construction of paved roads to assist Ualapue lessees to access their homestead lots which will be identified in the Master Plan.

Mahalo,

U'ilani Schnackenberg

Choy, Andrew H

From: Suzette Holtzman <[REDACTED]>
Sent: Thursday, July 22, 2021 8:13 AM
To: DHHL.Planning
Subject: [EXTERNAL] Testimony

Aloha! Department of Hawaiian Homelands, Planning Office

SUPPORT: I support Community Benefits as stated below to support future waitlisters projects for Ualapue. Any one of the below conditions would be a suitable community benefit for the access easement. And, that the Commissioners will recommend to Land Use Management Division, Mr. Albino to insert Community Benefits as conditions in Agreement to Land Lease Disposition.

- Priority 1: That Maui County provide future Ualapue lessees access to free potable water by constructing a Water Tower that is high enough to allow trucks with containers of 250 gallons of water to drive up and fill the containers without having to unload the containers.
- Priority 2: That DHHL identify and charge the county the fair market value for the number of square footages or land requested (highest value) for the access easement and that 100% of the lease rent be set aside for Ahonui Homestead Association's implementation of the Ualapue Master Plan.
- Priority 3: That Maui County assist in the construction of paved roads to assist Ualapue lessees to access their homestead lots which will be identified in the Master Plan.

Mahalo,
Suzie Holtzman
(808) 558-0408

EXHIBIT E

Choy, Andrew H

From: Godfrey Akaka <[REDACTED]>
Sent: Thursday, July 22, 2021 7:16 AM
To: DHHL.Planning
Cc: Cora Caparida
Subject: [EXTERNAL] Testimony

Aloha! Department of Hawaiian Homelands, Planning Office

SUPPORT: I, support Community Benefits as stated below to support future waitlisters project for Ualapue. Any one of the below conditions would be a suitable community benefit for the access easement. And, that the Commissioners will recommend to Land Use Management Division, Mr. Albino to insert Community Benefits as conditions in Agreement to Land Lease Disposition.

- Priority 1: That Maui County provide future Ualapue lessees access to free potable water by constructing a Water Tower that is high enough to allow trucks with containers of 250 gallons of water to drive up and fill the containers without having to unload the containers.
- Priority 2: That DHHL identify and charge the county the fair market value for the number of square footages or land requested (highest value) for the access easement and that 100% of the lease rent be set aside for Ahonui Homestead Association's implementation of the Ualapue Master Plan.
- Priority 3: That Maui County assist in the construction of paved roads to assist Ualapue lessees to access their homestead lots which will be identified in the Master Plan.

Mahalo,

Godfrey Akaka Jr. 808-213-1013

Choy, Andrew H

From: ivkadowaki [REDACTED]
Sent: Wednesday, July 21, 2021 10:00 AM
To: DHHL.Planning
Subject: [EXTERNAL] Testimony

Aloha! Department of Hawaiian Homelands, Planning Office

SUPPORT: I, support Community Benefits as stated below to support future waitlisters project for Ualapue'e. Any one of the below conditions would be a suitable community benefit for the access easement. And, that the Commissioners will recommend to Land Use Management Division, Mr. Albino to insert Community Benefits as conditions in Agreement to Land Lease Disposition.

- Priority 1: That Maui County provide future Ualapue lessees access to free potable water by constructing a Water Tower that is high enough to allow trucks with containers of 250 gallons of water to drive up and fill the containers without having to unload the containers.
- Priority 2: That DHHL identify and charge the county the fair market value for the number of square footages or land requested (highest value) for the access easement and that 100% of the lease rent be set aside for Ahonui Homestead Association's implementation of the Ualapue Master Plan.
- Priority 3: That Maui County assist in the construction of paved roads to assist Ualapue lessees to access their homestead lots which will be identified in the Master Plan.

Mahalo,

Iwalani Kadowaki

Sent from [Mail](#) for Windows 10

Choy, Andrew H

From: Alma gAMIAO [REDACTED]
Sent: Wednesday, July 21, 2021 2:22 PM
To: DHHL.Planning
Subject: [EXTERNAL] Testimony

Aloha! Department of Hawaiian Homelands, Planning Office

SUPPORT: I, support Community Benefits as stated below to support future waitlisters project for Ualapue. Any one of the below conditions would be a suitable community benefit for the access easement. And, that the Commissioners will recommend to Land Use Management Division, Mr. Albino to insert Community Benefits as conditions in Agreement to Land Lease Disposition.

- Priority 1: That Maui County provide future Ualapue lessees access to free potable water by constructing a Water Tower that is high enough to allow trucks with containers of 250 gallons of water to drive up and fill the containers without having to unload the containers.
- Priority 2: That DHHL identify and charge the county the fair market value for the number of square footages or land requested (highest value) for the access easement and that 100% of the lease rent be set aside for Ahonui Homestead Association's implementation of the Ualapue Master Plan.
- Priority 3: That Maui County assist in the construction of paved roads to assist Ualapue lessees to access their homestead lots which will be identified in the Master Plan.

Mahalo,

Alma K Gamiao. 808-927-3866

EXHIBIT E

Choy, Andrew H

From: Yolanda Tanielu <[REDACTED]>
Sent: Wednesday, July 21, 2021 4:32 PM
To: DHHL.Planning
Subject: [EXTERNAL] TESTIMONY

Aloha! Department of Hawaiian Homelands, Planning Office

SUPPORT: I, support Community Benefits as stated below to support future waitlisters project for Ualapu'e. Any one of the below conditions would be a suitable community benefit for the access easement. And, that the Commissioners will recommend to Land Use Management Division, Mr. Albino to insert Community Benefits as conditions in Agreement to Land Lease Disposition.

- Priority 1: That Maui County provide future Ualapu'e lessees access to free potable water by constructing a Water Tower that is high enough to allow trucks with containers of 250 gallons of water to drive up and fill the containers without having to unload the containers.
- Priority 2: That DHHL identify and charge the county the fair market value for the number of square footages or land requested (highest value) for the access easement and that 100% of the lease rent be set aside for Ahonui Homestead Association's implementation of the Ualapu'e Master Plan.
- Priority 3: That Maui County assist in the construction of paved roads to assist Ualapu'e lessees to access their homestead lots which will be identified in the Master Plan.

Mahalo,

Ruth Y. Tanielu

Choy, Andrew H

From: Yolanda Tanielu [REDACTED] >
Sent: Wednesday, July 21, 2021 4:35 PM
To: DHHL.Planning
Subject: [EXTERNAL] TESTIMONY

Aloha! Department of Hawaiian Homelands, Planning Office

SUPPORT: I, support Community Benefits as stated below to support future waitlisters project for Ualapue'e. Any one of the below conditions would be a suitable community benefit for the access easement. And, that the Commissioners will recommend to Land Use Management Division, Mr. Albino to insert Community Benefits as conditions in Agreement to Land Lease Disposition.

- Priority 1: That Maui County provide future Ualapue lessees access to free potable water by constructing a Water Tower that is high enough to allow trucks with containers of 250 gallons of water to drive up and fill the containers without having to unload the containers.
- Priority 2: That DHHL identify and charge the county the fair market value for the number of square footages or land requested (highest value) for the access easement and that 100% of the lease rent be set aside for Ahonui Homestead Association's implementation of the Ualapue Master Plan.
- Priority 3: That Maui County assist in the construction of paved roads to assist Ualapue lessees to access their homestead lots which will be identified in the Master Plan.

Mahalo,

Irene Ka'ahanui