

ADDENDUM NO. 2
IFB-21-HHL-017
Furnish and Install Energy Conservation Measures to Building D,
Kulana Oihi Multi-Service Center, Kaunakakai, Molokai

Issued: June 4, 2021

Bidders, please take note of the following:

AMENDMENTS TO THE IFB REQUIREMENTS

OFFER FORM, Item 4, on Page OF-4

4. Number of years of contracting experience: _____ (Required minimum three (3) years of contracting in Lighting, HVAC Control systems and Building Envelope improvements.)

The number of years bidder inserts into the blank in Item 4, on Page OF-4 of the OFFER FORM in the original IFB issued May 14, 2021 shall be considered as the response to the above amendment.

SECTION 2.6 BIDDER QUALIFICATION, Item 2, on Page SC-2

2. Bidder shall have a minimum of three (3) years of contracting experience as a contractor implementing Lighting, HVAC Control systems and Building Envelope improvements prior to bid opening date.

The above language replaces the qualification stated in the original IFB issued May 14, 2021.

ADDITIONAL INFORMATION

Attached to this Addendum are Lighting Plans for Building D of the Kulana Oihi Multi-Service Center. Although the information is deemed reliable, they are provided as reference only. They are not the as-built record drawings and may not reflect actual conditions.

RESPONSES TO ADDITIONAL QUESTIONS

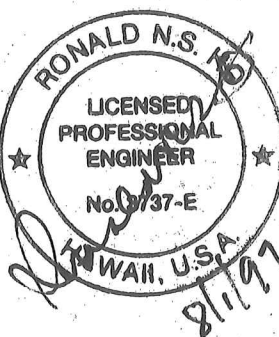
There were no further questions from bidders received by DHHL as of June 2, 2021 by the 2:00 pm HST deadline.

KAUAHIK AUA
& CHUN
ARCHITECTS

DWIGHT PAUHI KAUAHIKAUA AIA
DANIEL GARY CHUN AIA

KAWAIAHAO PLAZA HALE
567 SO. KING STREET SUITE 108
HONOLULU, HAWAII 96813

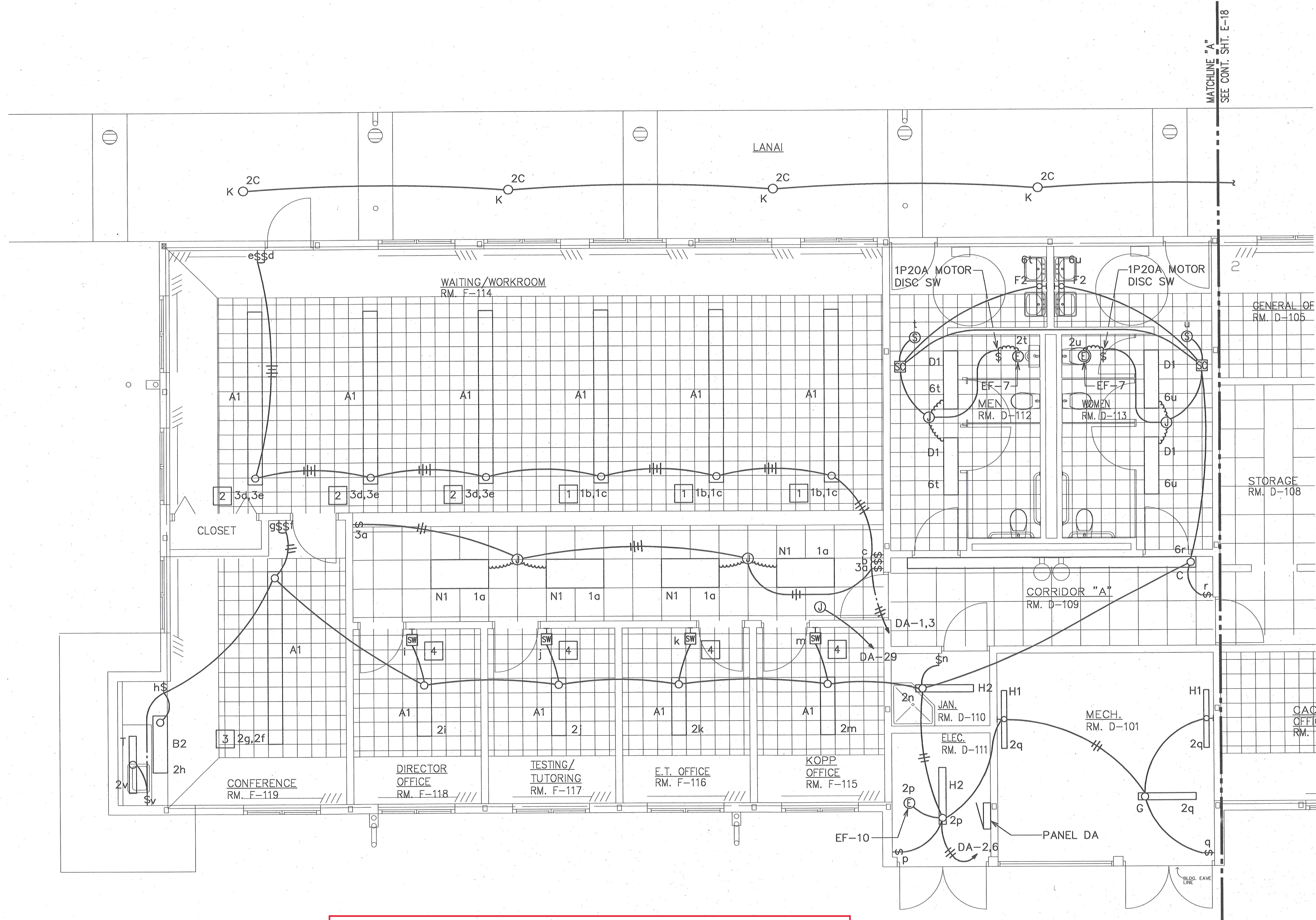
PH: (808) 526-2283
FAX: (808) 599-4723



This work was prepared by me or under my supervision and construction of this project will be under my observation (Observation of Construction as defined in Section 1.2(h) of the Rules and Regulations of the Board of Professional Engineers, Architects and Surveyors of the State of Hawaii).

KULANA'OIWI

MAUNALOA HIGHWAY
KALAMA'ULA, MOLOKAI
HAWAII 96748
T.M.K. 5-2-9: 12 & 30

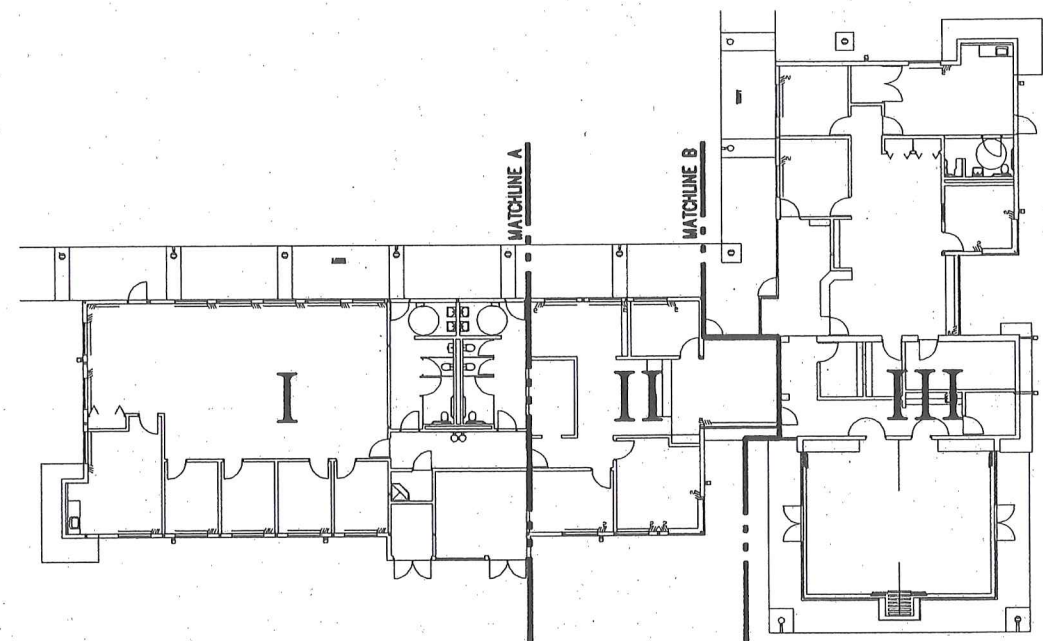
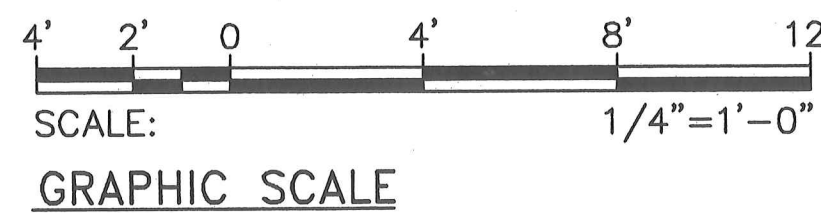


SHEET NOTES:

- 1 OUTER LAMPS ON SW. b; CENTER LAMP ON SW. c.
- 2 OUTER LAMPS ON SW. d; CENTER LAMP ON SW. e.
- 3 OUTER LAMPS ON SW. f; CENTER LAMP ON SW. g.
- 4 INFRARED SENSING SWITCH WITH MANUAL "ON" AND AUTOMATIC "OFF" CONTROL.

**FOR REFERENCE ONLY.
THIS IS NOT THE AS-BUILT RECORD
DRAWING AND MAY NOT REFLECT
ACTUAL CONDITIONS.**

LIGHTING PLAN I
SCALE: 1/4"=1'-0"



KEY PLAN
N.T.S.

REV. NO.	DATE	BY	DESCRIPTION
----------	------	----	-------------

REVISIONS

BUILDING "D" (DHHL/OHA)
LIGHTING PLAN I

PROJECT NO:

SHEET

DATE:

6/97

DRAWN BY:

CV

CHECKED BY:

KO

E-17

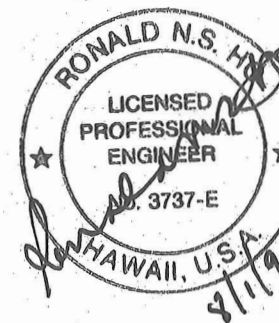
179 OF 189

KAUAIKUA
& CHUN
ARCHITECTS

DWIGHT PAIAHI KAUAIKUA AIA
DANIEL GARY CHUN AIA

KAWAIAHAO PLAZA HALE
567 SO. KING STREET SUITE 108
HONOLULU, HAWAII 96813

PH: (808) 526-2283
FAX: (808) 599-4723



This work was prepared by me or under my supervision and construction of this project will be under my observation (Observation of Construction as defined in Section 1.2(h) of the Rules and Regulations of the Board of Professional Engineers, Architects and Surveyors of the State of Hawaii).

KULANA'OIWI

MAUNALOA HIGHWAY
KALAMA'ULA, MOLOKA'I
HAWAII 96748
T.M.K. 5-2-9:12 & 30

REV. NO.	DATE	BY	DESCRIPTION

REVISIONS

BUILDING "D" (DHHL/OHA)
LIGHTING PLAN II

PROJECT NO:

SHEET

DATE:

6/97

DRAWN BY:

CV

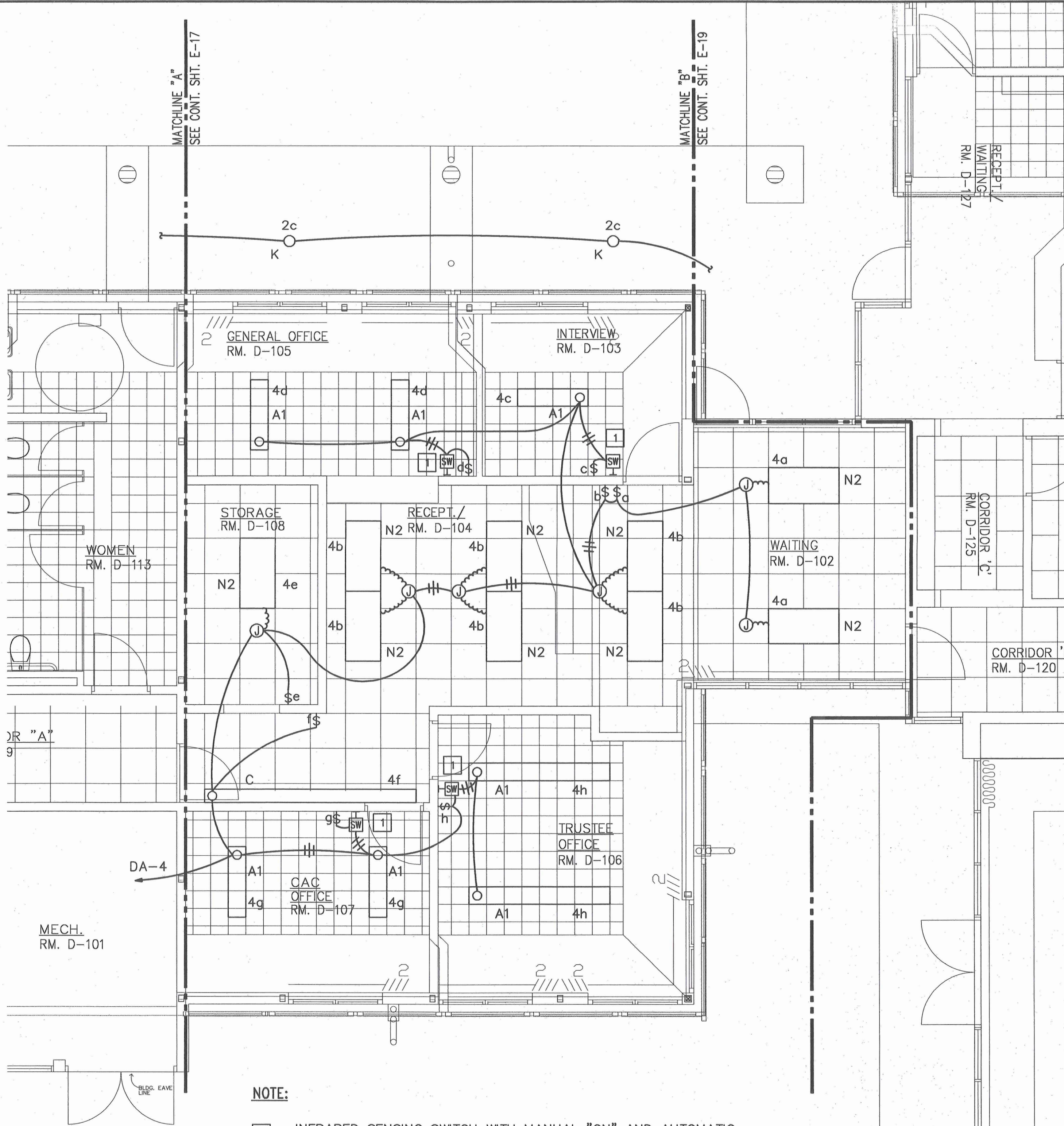
CHECKED BY:

KO

E-18

180 OF 189

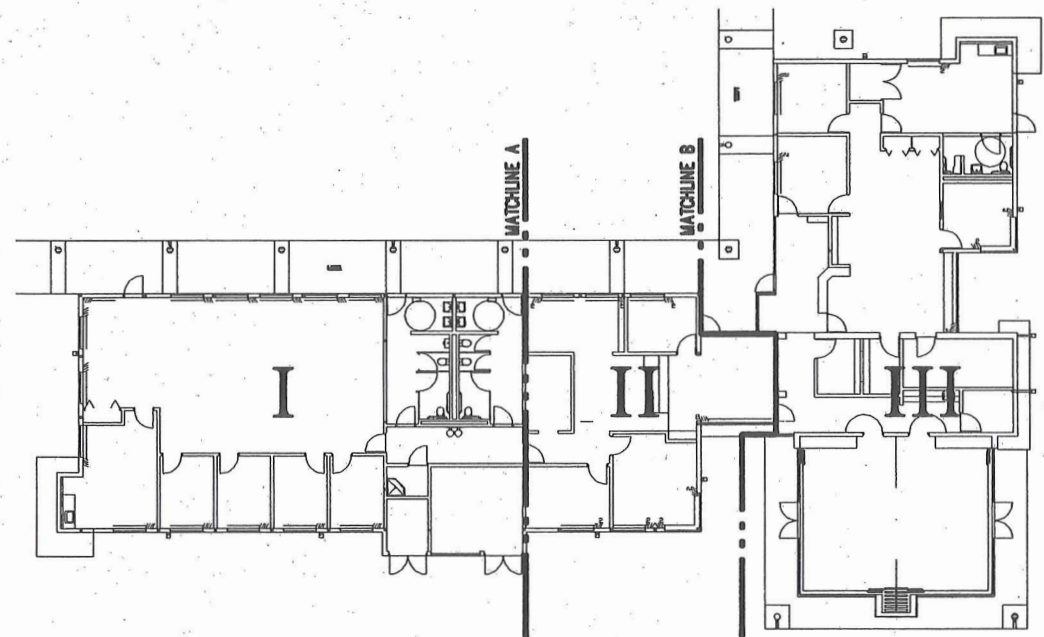
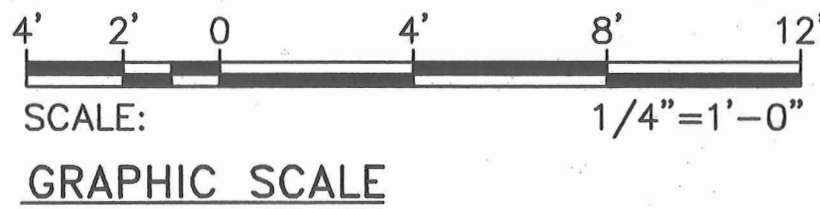
FOR REFERENCE ONLY.
THIS IS NOT THE AS-BUILT RECORD
DRAWING AND MAY NOT REFLECT
ACTUAL CONDITIONS.



NOTE:

- 1 INFRARED SENSING SWITCH WITH MANUAL "ON" AND AUTOMATIC "OFF" CONTROL FOR 2 OUTER LAMPS OF TYPE A1 FIXTURE. CENTER LAMP CONTROLLED BY ADJACENT TOGGLE SWITCH GANGED WITH SENSING SWITCH IN 2-GANG BOX AND WALL PLATE. TOGGLE SWITCH WIRED TO LOAD SIDE OF SENSOR SWITCH.

LIGHTING PLAN II
SCALE: 1/4"=1'-0"

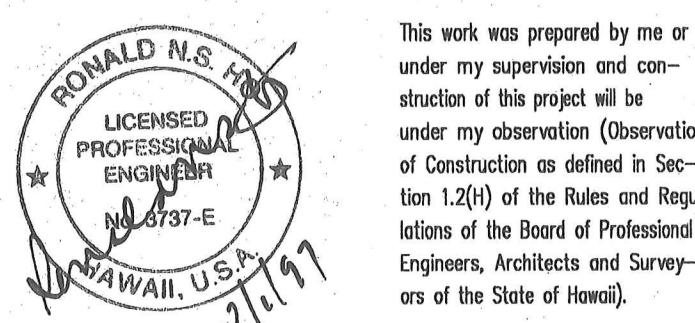


KEY PLAN
N.T.S.

KAUAIHIK AUA
& CHUN
ARCHITECTS

DWIGHT PAUHI KAUAIHIKAUA AIA
DANIEL GARY CHUN AIA

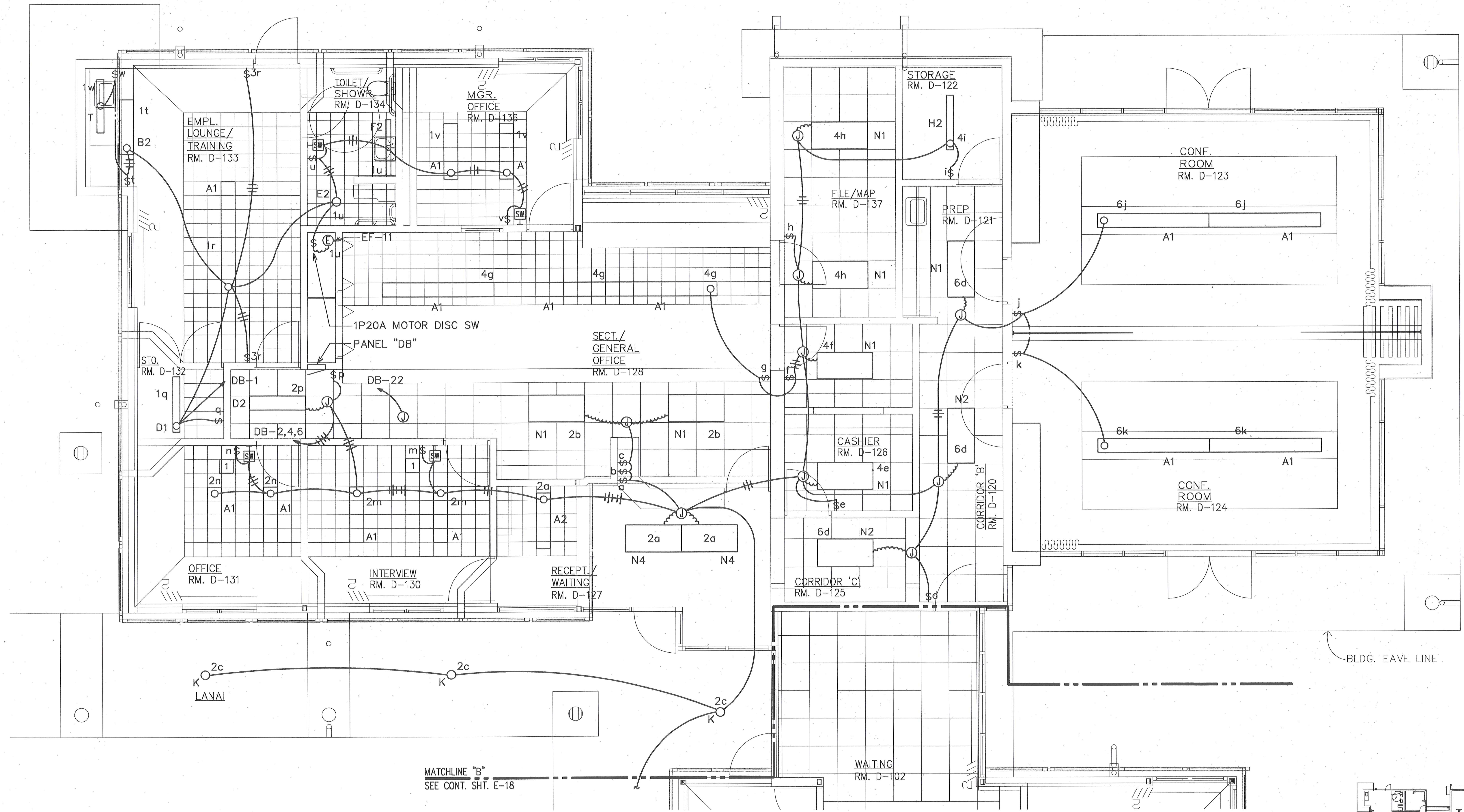
KAWAIAHAO PLAZA HALE
567 SO. KING STREET SUITE 108
HONOLULU, HAWAII 96813
PH: (808) 526-2283
FAX: (808) 599-4723



This work was prepared by me or under my supervision and construction of this project will be under my observation (Observation of Construction as defined in Section 1.2(f) of the Rules and Regulations of the Board of Professional Engineers, Architects and Surveyors of the State of Hawaii).

KULANA'OIWI

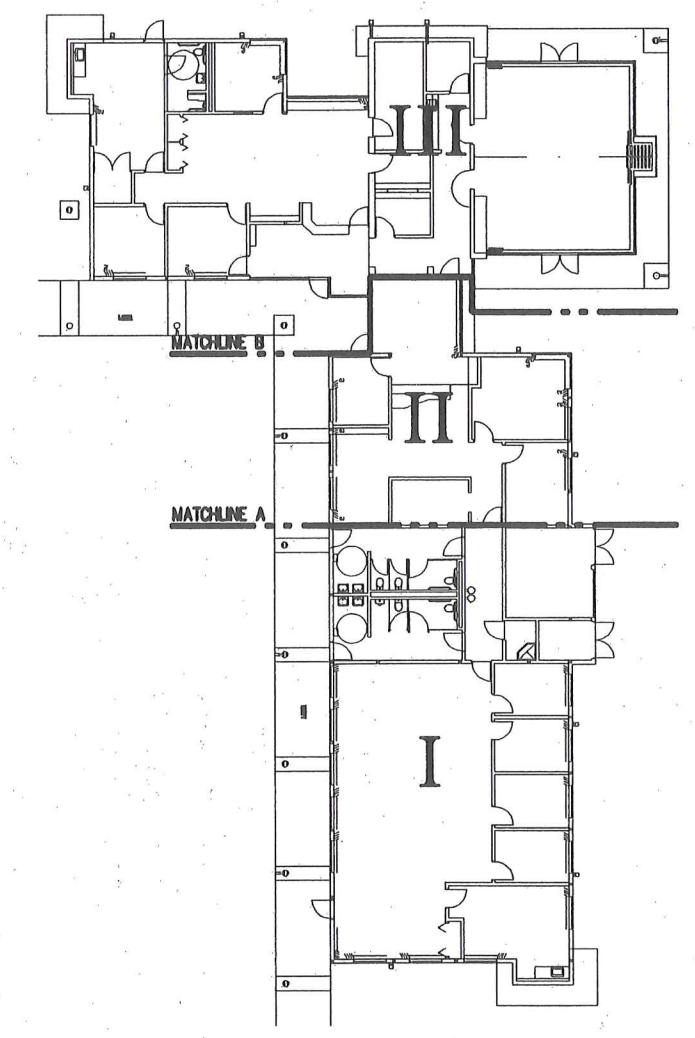
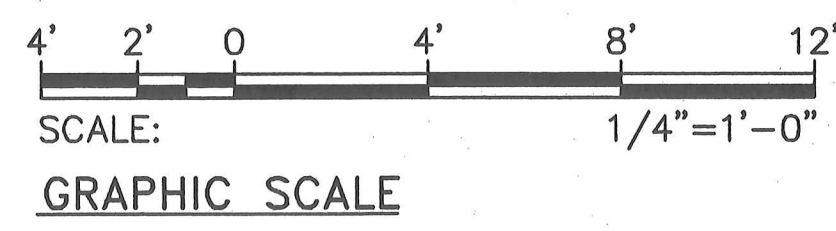
MAUNALOA HIGHWAY
KALAMA'ULA, MOLOKAI
HAWAII 96748
T.M.K. 5-2-9:12 & 30



**FOR REFERENCE ONLY.
THIS IS NOT THE AS-BUILT RECORD
DRAWING AND MAY NOT REFLECT
ACTUAL CONDITIONS.**

NOTE:
1 INFRARED SENSING SWITCH WITH MANUAL "ON" AND AUTOMATIC "OFF" CONTROL FOR 2 OUTER LAMPS OF TYPE A1 FIXTURE. CENTER LAMP CONTROLLED BY ADJACENT TOGGLE SWITCH GANGED WITH SENSING SWITCH IN 2-GANG BOX AND WALL PLATE.

LIGHTING PLAN III
SCALE: 1/4"=1'-0"



KEY PLAN
N.T.S.

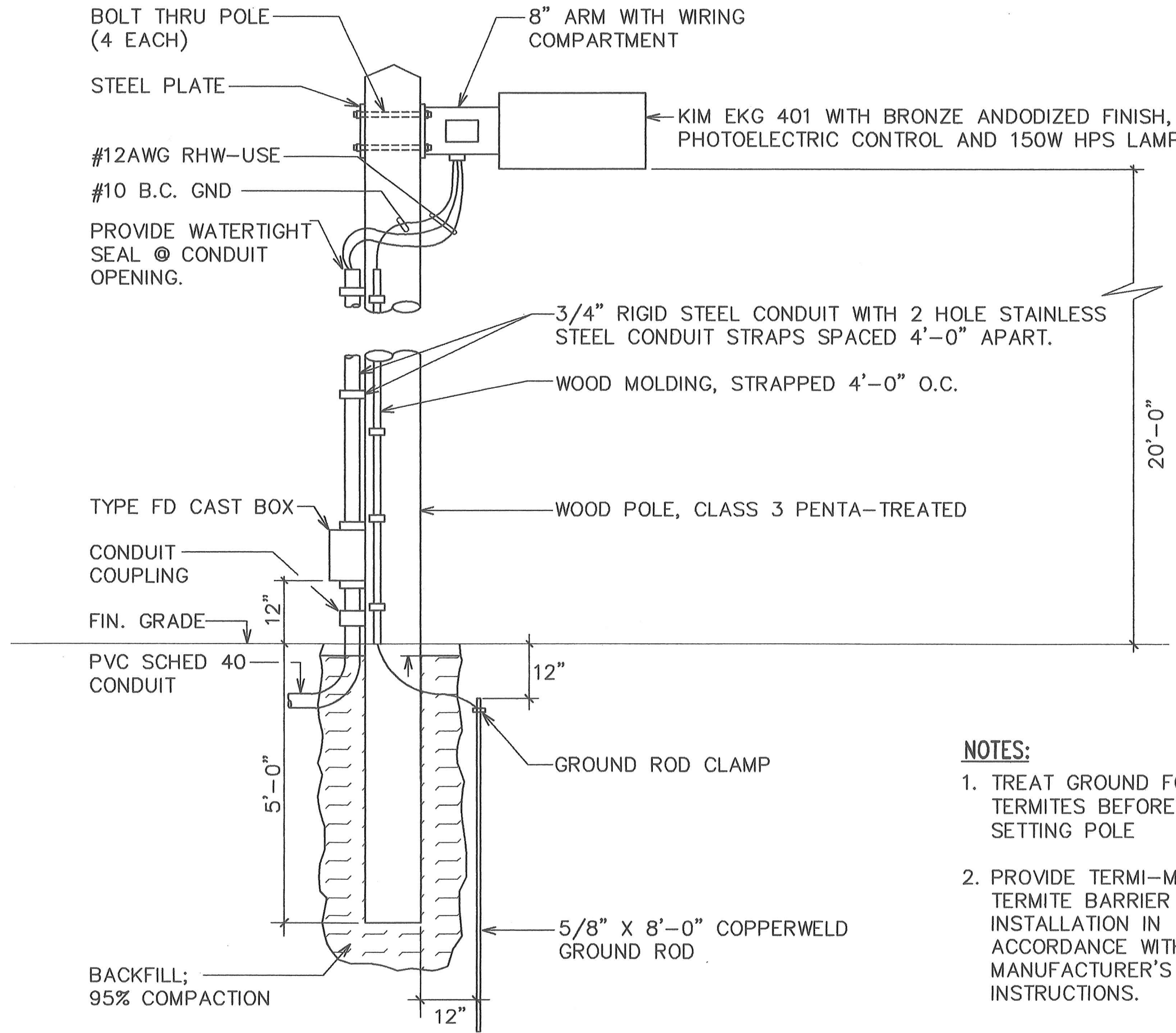
REVISIONS			
REV. NO.	DATE	BY	DESCRIPTION
BUILDING "D" (DHHL/OHA) LIGHTING PLAN III			
PROJECT NO:		SHEET	
DATE:		E-19	
DRAWN BY:		CV	
CHECKED BY:		KO	
		1 of 129	

LIGHTING FIXTURE SCHEDULE

TYPE	LAMPS	MOUNTING	DESCRIPTION	MANUFACTURER OR APPROVED EQUAL
A1	3 - 32W T8 FLUORESCENT PER 4' LENGTH	CEILING PENDANT	DIRECT/INDIRECT, 10" WIDE BY 4" HIGH HOUSING OF EXTRUDED ALUMINUM ALLOY, WHITE FINISH, SEMI-SPECULAR PARABOLIC LOUVER, MODULAR LENGTH AS SHOWN (4', 8', 12', OR 16').	FORUM OBOUND OBUD
A2	2 - 32W T8 FLUORESCENT PER 4' LENGTH	CEILING PENDANT	SAME AS A1 EXCEPT WITH 2 LAMPS PER 4' LENGTH.	FORUM OBOUND OBUD
A3	2 - 32W T8 FLUORESCENT	CEILING PENDANT	SAME AS TYPE A2 EXCEPT WITH DIMMING BALLAST.	FORUM OBOUND OBUD
B1	2 - 32W T8 FLUORESCENT	CEILING RECESSED	1'X 4', SPECIAL ANODIZED ALUMINUM PARABOLIC LOUVER, 8 CELLS, FOR TILE CEILING.	COLUMBIA P214-2
B2	2 - 32W T8 FLUORESCENT	CEILING RECESSED	SAME AS TYPE B1 EXCEPT FOR GYP BOARD CEILING.	COLUMBIA P214-2
C	1 - 32W T8 FLUORESCENT	CEILING RECESSED	PERIMETER WALL WASH, CONTINUOUS LENGTH AS SHOWN, SILVER PARABOLIC LOUVERS.	PRUDENTIAL P-80-1
D1	2 - 32W T8 FLUORESCENT	CEILING RECESSED	1' X 4', ACRYLIC PRISMATIC LENS, FOR GYP BOARD CEILING.	COLUMBIA 4PS14
D2	2 - 32W T8 FLUORESCENT	CEILING RECESSED	SAME AS D1 EXCEPT FOR TILE CEILING.	COLUMBIA 4PS14
E1	2 - 18W QUAD COMPACT FLUOR	CEILING RECESSED	OPEN DOWNLIGHT, 6" DIA. GOLD CONE, HORIZONTALLY MOUNTED LAMPS, ELECTRONIC BALLAST.	KIRLIN RR90604
E2	2 - 13W QUAD COMPACT FLUOR	CEILING RECESSED	SAME AS TYPE E1 EXCEPT FOR LAMPS.	KIRLIN RR90603
F1	2 - 25W T8 FLUORESCENT	WALL	3' LENGTH, INJECTION MOLDED CLEAR ACRYLIC PRISMATIC LENS, UP/DOWN LIGHT DISTRIBUTION, ELECTRONIC BALLAST.	DAY-BRITE CB225
F2	2 - 32W T8 FLUORESCENT	WALL	SAME AS F1 EXCEPT FOR 4' LENGTH.	DAY-BRITE CB232
G	2 - 32W T8 FLUORESCENT	CEILING SURFACE	4' STRIP WITH WIRE GUARD.	COLUMBIA CS4-2
H1	1 - 32W T8 FLUORESCENT	WALL	4' LENGTH, WHITE ACRYLIC DIFFUSER.	COLUMBIA W4-1
H2	1 - 32W T8 FLUORESCENT	CEILING SURFACE	SAME AS H1 EXCEPT FOR CEILING MOUNTING.	COLUMBIA AD4-1
J	2 - 32W T8 FLUORESCENT	CEILING SURFACE	WRAP-AROUND PRISMATIC ACRYLIC DIFFUSER, 4' LENGTH.	COLUMBIA WC4-2
K	2 - 13W QUAD COMPACT FLUOR	CEILING RECESSED	REGRESSED PRISMATIC ACRYLIC LENS, 6" DIA., HORIZONTALLY MOUNTED LAMPS, ELECTRONIC BALLAST. UL LISTED FOR DAMP LOCATION.	KIRLIN RR90637
L	1 - 18W QUAD COMPACT FLUOR	WALL	PRISMATIC GLASS LENS, UL LISTED FOR WET LOCATION, WITH INTEGRAL PHOTOELECTRIC CONTROL.	MWC NW1
M	2 - 9W COMPACT FLUOR	CEILING RECESSED	SHOWER LIGHT, UL LISTED FOR WET LOCATION, POLYCARBONATE LENS, ELECTRONIC BALLAST.	KIRLIN RR90636

FOR REFERENCE ONLY.
THIS IS NOT THE AS-BUILT RECORD DRAWING
AND MAY NOT REFLECT ACTUAL CONDITIONS.

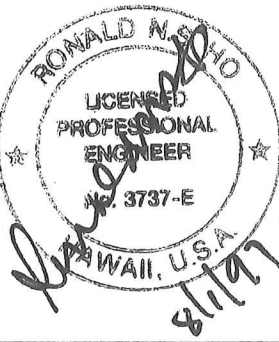
TYPE	LAMPS	MOUNTING	DESCRIPTION	MANUFACTURER OR APPROVED EQUAL
N1	3 - 32W T8 FLUORESCENT	CEILING RECESSED	2'X 4', SPECULAR ANODIZED ALUMINUM PARABOLIC LOUVER, 18 CELLS, FOR TILE CEILING.	COLUMBIA P224-3
N2	2 - 32W T8 FLUORESCENT	CEILING RECESSED	SAME AS TYPE N1 EXCEPT FOR 2 LAMPS, 12 CELLS.	COLUMBIA P224-3
N3	3 - 32W T8 FLUORESCENT	CEILING RECESSED	SAME AS TYPE N1 EXCEPT FOR GYP BOARD CEILING.	COLUMBIA P224-3
N4	2 - 32W T8 FLUORESCENT	CEILING RECESSED	SAME AS TYPE N2 EXCEPT FOR GYP BOARD CEILING.	COLUMBIA P224-2
P	1 - 7W COMPACT FLUOR	CEILING SURFACE	POLYCARBONATE OPAL DIFFUSER, CAST ALUMINUM HOUSING.	MARCO BNF1-7
Q	2 - 32W T8 FLUORESCENT	WALL	DIRECT/INDIRECT, 6" SQ CROSS SECTION, SPECULAR ALUMINUM LOUVER, 4' AND 8' LENGTH, MATTE WHITE FINISH, WITH MOUNTING HARDWARE AND CONNECTORS.	COLUMBIA S643-42
R		CEILING PENDANT	SPECIAL DECORATIVE TYPE TO BE SELECTED BY THE ARCHITECT, \$1,000 ALLOWANCE.	
S	2 - 9W COMPACT FLUOR	WALL RECESSED	CAST ALUMINUM LOUVERS, WHITE SAFETY GLASS DIFFUSER, BLACK FINISH.	BEGA 2079P
T	1 - 32W T8 FLUORESCENT	UNDERCABINET SURFACE	UNDERCABINET LIGHT, WHITE ACRYLIC DIFFUSER, ELECTRONIC BALLAST.	SENTINEL SL SERIES
U		CEILING PENDANT	SPECIAL DECORATIVE TYPE TO BE SELECTED BY THE ARCHITECT, \$800 ALLOWANCE.	



1
E-26
PARKING AREA LIGHT DETAIL
NOT TO SCALE

KAUAHIK AUA
& CHUN
ARCHITECTS

DWIGHT PAUHI KAUAHIKAUA AIA
DANIEL GARY CHUN AIA
KAWAIAHAO PLAZA HALE
567 SO. KING STREET SUITE 108
HONOLULU, HAWAII 96813
PHE (808) 526-2283
FAX (808) 599-4723



This work was prepared by me or under my supervision and construction of this project will be under my observation (Observation of Construction as defined in Section 1.2(H) of the Rules and Regulations of the Board of Professional Engineers, Architects and Surveyors of the State of Hawaii).

KULANA'OIWI

MAUNALOA HIGHWAY
KALAMA'ULA, MOLOKAI
HAWAII 96748
T.M.K. 5-2-9:12 & 30

REV. NO.	DATE	BY	DESCRIPTION

REVISIONS

LIGHTING FIXTURE SCHEDULE,
PARKING AREA LIGHT DETAIL

PROJECT NO:	SHEET
DATE:	E-26
DRAWN BY:	100 OF 109
CHECKED BY:	