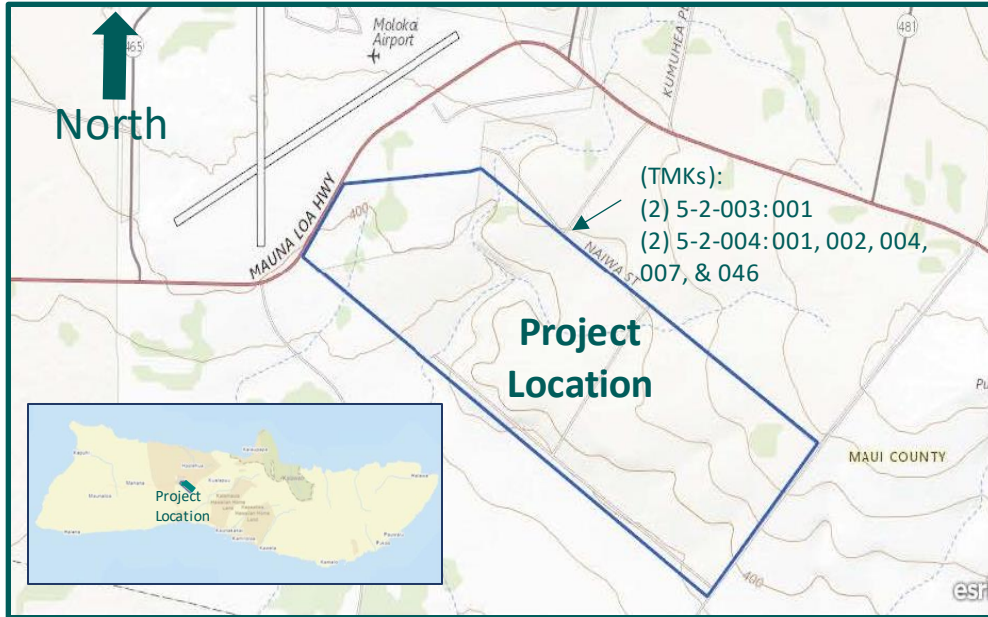


Nā'īwa Agricultural Subdivision



dhl.Hawaii.gov

Questions about this notice or the project contact:



DEPARTMENT OF HAWAIIAN HOME LANDS

Mitchell Kawamura, Project
Manager
P.O. Box 1879
Honolulu, HI 96805
Phone: (808) 620-9500



R. M. TOWILL CORPORATION

Brian Takeda, Lead Consultant
2024 North King Street, Suite 200
Honolulu, Hawai'i 96819
Phone: (808) 842-1133
Fax: (808) 842-1937

COURTESY NOTICE OF SITE INSPECTION & FIELD WORK

**February 22-26, 2021, and
March 1-5, 2021, 2021**

On behalf of the Department of Hawaiian Home Lands (DHHL), staff from AECOS, Inc. and Cultural Surveys Hawai'i under the direction of R.M. Towill Corporation will be visiting the Nā'īwa Subdivision on the dates listed above to collect relevant biological and archaeological information as part of the infrastructure improvements project for Nā'īwa Subdivision. The proposed field work will help inform DHHL in the development of its draft Environmental Assessment.

Surveyors will be working during both daylight and nighttime hours. To protect the health and safety of the Moloka'i community, all necessary precautions will be taken, per the Hawai'i Safe Travels rules. Surveyors will wear masks and adhere to strict social distancing protocols. Surveyors will not be meeting with any members of the community during this visit and respectfully request that the community not approach surveyors while field work is taking place.

ABOUT THE PROJECT

DHHL will be constructing infrastructure improvements in support of the Nā'īwa Agricultural Subdivision. The improvements will occur at 58 lots on approximately 341 acres. The proposed project will include infrastructure improvements including access roadways, driveways, electrical power connections, and irrigation and potable water lines. These improvements will support DHHL beneficiaries through the provision of essential services necessary for agricultural homesteading.