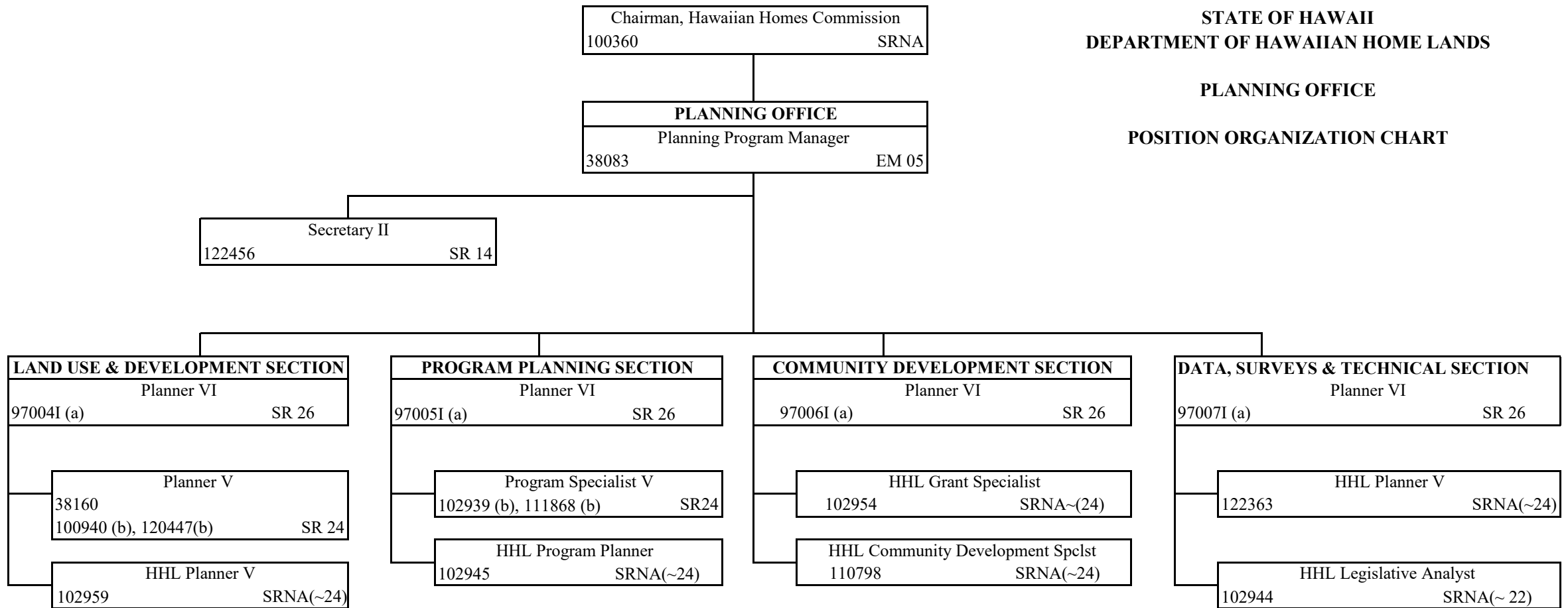


**STATE OF HAWAII
DEPARTMENT OF HAWAIIAN HOME LANDS**

PLANNING OFFICE

POSITION ORGANIZATION CHART



(a) Authorized by Act 5, SLH 2019. Pending Establishment

(b) PN 100940, converted from Exempt, HHL Planner V (SRNA~24) to Civil Service, Planner V, SR24 eff. 09/27/19

(b) PN 120447, converted from Exempt, HHL Planner V (SRNA~24) to Civil Service, Planner V, SR24 eff. 01/24/20

(b) PN 102939, converted from Exempt HHL Planner V (SRNA~24) to Civil Service, Program Specialist V, SR24, eff. 01/24/2020

(b) PN 111868, converted from Exempt HHL Resource Management Specilaist (SRNA~24) to Civil Service, Program Specialist V, SR24, eff. 1/24/20