



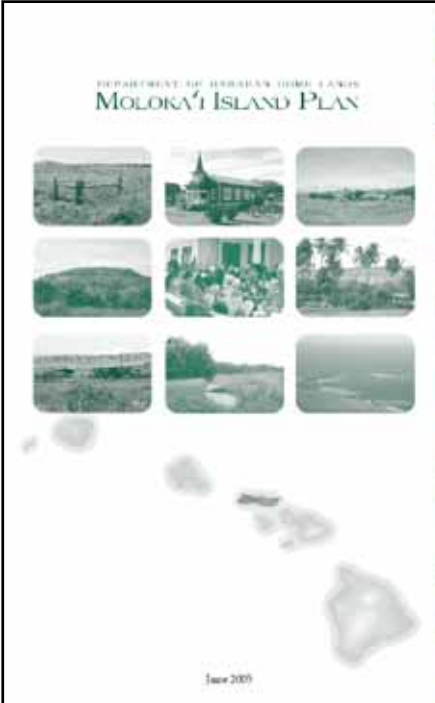
 **Department of Hawaiian Home Lands**

WORKSHOP OVERVIEW

- 1. HHC Role**
- 2. DHHL Background on Kalaupapa**
- 3. National Park Service General Management Plan**
 - Schedule
 - Preliminary Alternatives
- 4. Beneficiary Consultation**
 - “To get input and feedback on Preliminary Alternatives as identified by Kalaupapa National Park Service.”
- 5. Themes**
- 6. Next Steps**

HHC Role

- Participate via comments in the National Park Service's General Management Plan Process
 - Preliminary Alternatives: Comments due to Dept. Aug 31, 2011
 - Draft Management Plan
 - Final Management Plan
- Adopt Kalaupapa Special District Plan



Moloka'i Island Plan

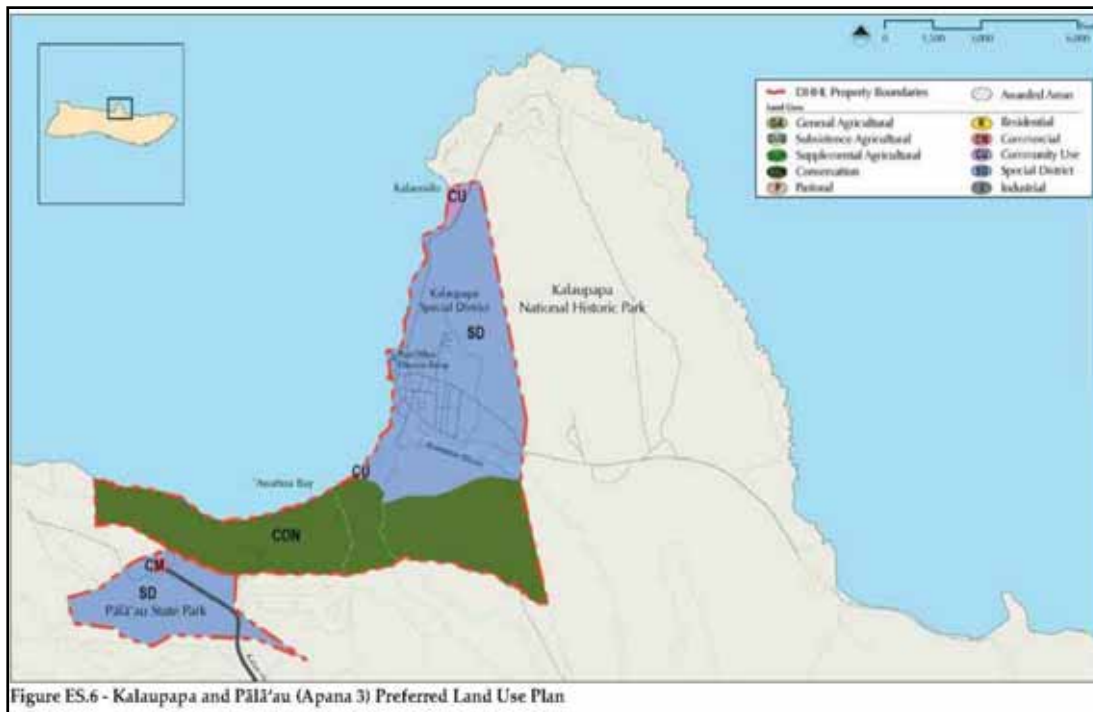
- 'Ualapu'e
- Kapa'akea, Makakupa'ia, Kamiloloa
- Kalama'ula
- Kalaupapa-Pālā'au
- Ho'olehua-Pālā'au

10 Land Use Designations

- Residential
- General Agriculture
- Subsistence Agriculture
- Supplemental Agriculture
- Pastoral
- Community Use
- Commercial
- Industrial
- Conservation
- Special District

Kalaupapa-Pālā'au Area

- **Special District**
 - Kalaupapa: 621 acres
 - Pālā'au Forest: 226 acres
- **Conservation**
 - Cliffs: 609 acres
- **Community Use**
 - Near Airport 3.5 acres
 - Fronting Awahua Bay 3.5 acres
- **Commercial**
 - Pālā'au 5 acres
- TOTAL 1,474 acres**



What is a Special District

- Area with severe constraints (topography, slope, inundation zone, tsunami zone, flood, endangered species)
- Area with natural, cultural, or historic resources
- Area that needs specialized planning in order to develop
- Area that requires some conservation principles but can be used with compatible uses
- Area that plays a role for ahupua'a
- Area that is significant to entire island

Kalaupapa National Park

- General Lease
 - 1,247 acres
 - 50 year lease that expires in 2041
 - July 15, 2011: \$230,000 lease rent per year
- Millions invested in infrastructure improvements and initiatives
- NPS Annual Operating Budget of \$4.2 Million

Opportunities & Constraints

- Perpetuating the legacy of Kalaupapa
- Important Cultural/Natural Resources
- Impact of canonization of Father Damien & beatification of Mother Marianne Cope
- NPS interest in long term perpetuation of area
- Limited Access by trail, plane, barge
- Expensive to maintain, improve, or provide new

Community Concerns

Island Plan

- Preserve legacy
- Respect patients
- Only for education
- Teach old ways
- NPS work with Native Hawaiians

Regional Plan

- DHHL engage with NPS in planning
- Ensure gathering
- Pālā'au separate from Kalaupapa
- Homesteading
- Consult with beneficiaries

NPS General Management Plan

- Identifies overall direction for future management
- Long-range, broad, conceptual view
- Framework for making decisions
- General path for next 15-20 years
- Acts as an EIS

NPS General Management Plan Schedule

- 2009 – Scoping
- 2011 – Preliminary Alternatives
- 2012 – Draft General Management Plan/EIS
- 2013 – Final General Management Plan

****Implementation****

NPS General Management Plan Preliminary Alternatives

Short Term – Long Term Management

- Alternative A: No Action
- Alternative B: Special and Sacred Places
- Alternative C: Stewardship
- Alternative D: Range of Visitation Opportunities

Key Topics

- Resources
- Visitor Experience
- Facilities
- Access & Transportation
- Management, Partnerships, & Agreements
- Boundary Modifications

Beneficiary Consultation

June 29, 2011

Lanikeha Community Center

6:00 p.m. – 8:00 p.m.

June 30, 2011

Kūlana 'Ōiwi Complex

9:00 a.m. – 12:00 p.m.

Purpose:

“To get input and feedback on Preliminary Alternatives as identified by Kalaupapa National Park Service.”

Themes

- Legacy of Kalaupapa
- Unique interests of Native Hawaiians
- Access to Kalaupapa and Resources
- Participation in Planning Process
- Future Management and Jurisdiction
- Is homesteading an option?

Next Steps

- **HHC Comments on Preliminary Alternatives due Aug. 31**
- **Create Kalaupapa Project Based Team**
 - To participate in planning for Kalaupapa
- **Draft General Management Plan**
 - Beneficiary Consultation Meetings
 - Review & Comment on Draft Plan
- **Final General Management Plan**
 - Review & Comment on Final Plan
- **Adoption of Kalaupapa Special District Plan**

Contact Information

Darrell C. Yagodich, Planning Program Manager

Darrell.C.Yagodich@hawaii.gov

(808) 620-9481

M. Kaleo Manuel, Planner

Kaleo.L.Manuel@hawaii.gov

(808) 620-9485