



KAPOLEI

REGIONAL PLAN UPDATE

Project Sponsor:
Department of Hawaiian Home Lands

Project Area:
All DHHL lands in the 'Ewa district including:
Kānehili homestead, Malu'ōhai homestead,
Ka'uluokaha'i homestead, Kaupe'a homestead,
East Kapolei, Ka Makana Ali'i, and Kalaeloa

Project Purpose:
To work with beneficiaries and other stakeholders to update the existing (2010) regional plan. The regional planning process allows regional beneficiaries to identify and solve their own issues and concerns. With support from DHHL and other partners, the planning process and resulting updated Regional Plan are intended to stimulate capacity-building, and to encourage stakeholders to champion the projects that will benefit their community.

Due to the current health and safety concerns from COVID-19, Beneficiary Consultation #1 will be hosted virtually using the Zoom platform. Links will be distributed to beneficiaries.

Project Schedule:
Beneficiary Consultation #1 - Wednesday, December 9, 2020 at 7:00pm via ZOOM
Additional Beneficiary Consultations - dates and location are to be determined

For more information contact:

Lillie Makaila, Planner
Townscape, Inc.
Phone: (808) 550-3893
E-mail: lillie@townscapeinc.com



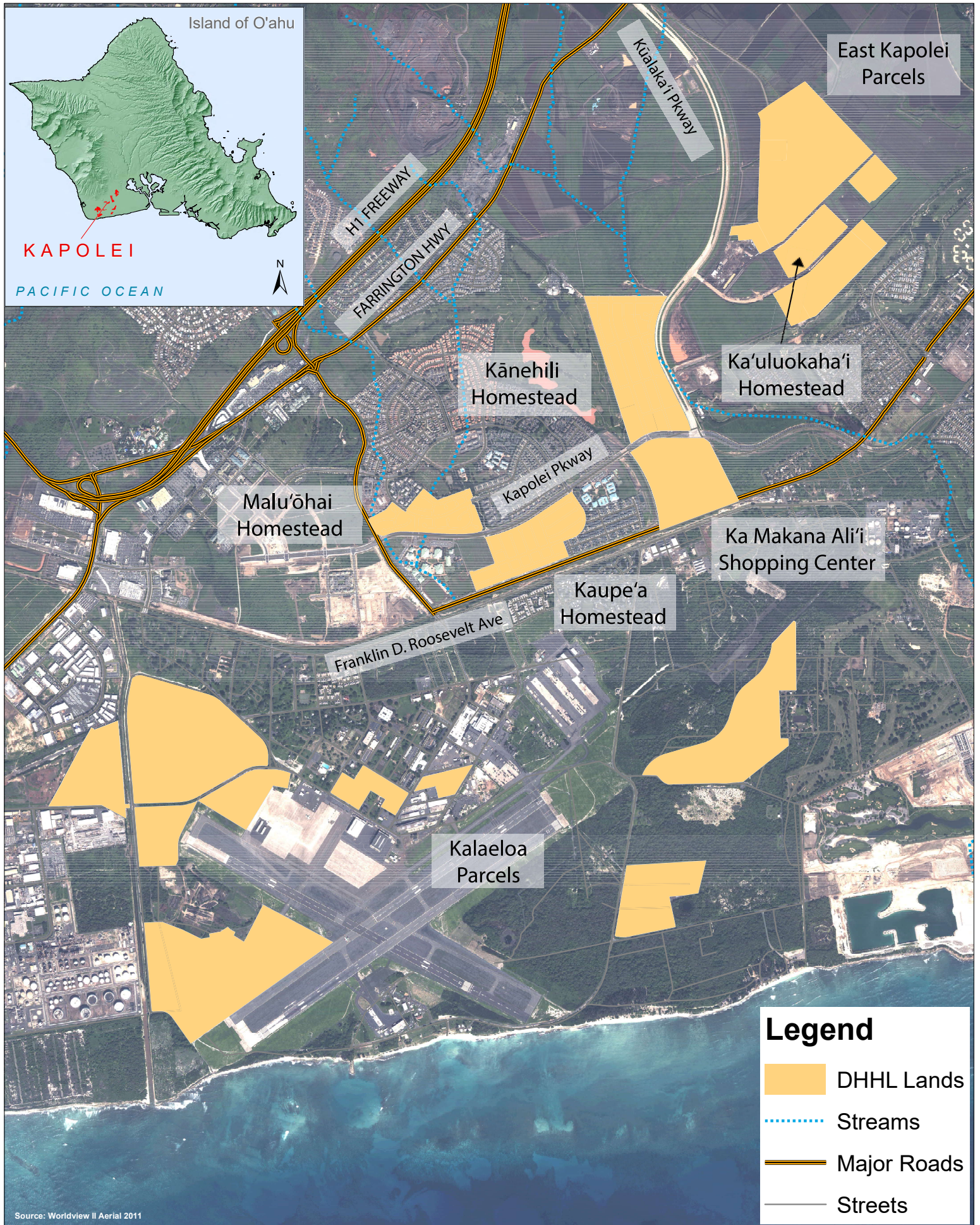
TOWNSCAPE, INC.
Environmental & Community Planning

Pearlyn Fukuba, Project Manager
DHHL Planning Office
Phone: (808) 620-9279
E-mail: pearlyn.l.fukuba@hawaii.gov



HAWAIIAN HOME LANDS
HAWAIIAN HOMES COMMISSION - DEPARTMENT OF HAWAIIAN HOME LANDS

October 2020



Kapolei Regional Plan Update
Planning Area Map
OCTOBER 2020



0 0.5 1 Miles



This graphic has been prepared for general planning purposes only and should not be used for boundary interpretation or other spatial analysis.