

### Lena - PLAN D (4 Bedroom, 3 Bath)

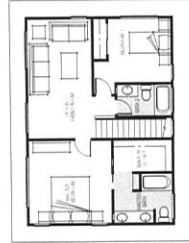
\$367,000

880 sq. ft. Entry Lanai  
775 sq. ft. Garage  
1,655 sq. ft. Option 1-Covered Half Lanai  
192 sq. ft. Option 2-Covered Full Lanai  
Option 3-Family Room

First Floor  
Second Floor  
Total Living Area



Second Floor



Option 3  
Family Room

Prices quoted are as of July 24, 2020 and will apply to homes purchased in 2020. Prices in the new year 2021 could be higher. Renderings may be slightly altered. Square footage is approximate. Features may vary due to location and site. Gentry reserves the right to make changes to design specifications and make material substitution without notice.

### Kau'opac - PLAN E (5 Bedroom, 3 Bath)

\$384,000

811 sq. ft. Entry Lanai  
896 sq. ft. Garage  
1,707 sq. ft. Option 1-Covered Lanai  
148 sq. ft. Option 2-Family Room

First Floor  
Second Floor  
Total Living Area



First Floor

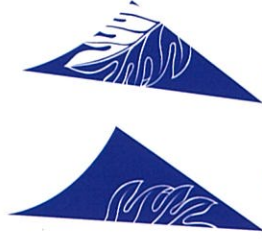


Second Floor



Option 2  
Family Room

Prices quoted are as of July 24, 2020 and will apply to homes purchased in 2020. Prices in the new year 2021 could be higher. Renderings may be slightly altered. Square footage is approximate. Features may vary due to location and site. Gentry reserves the right to make changes to design specifications and make material substitution without notice.



# Ka'uluokaha'i



**GENTRY**

DEPARTMENT OF HAWAIIAN HOME LANDS

**'A'a - PLAN A**  
(2 Bedroom, 1 Bath)  
\$ 246,000

Total Living Area 775 sq. ft.  
Entry Lanai 447 sq. ft.  
Garage Option 1 - Covered Lanai 87 sq. ft.



First Floor

**Kelewa'a - PLAN B**  
(2 Bedroom, 2 Bath)  
\$ 302,000

Total Living Area 1,008 sq. ft.  
Entry Lanai 77 sq. ft.  
Garage Option 1 - Covered Lanai 112 sq. ft.



First Floor

**Kaulua - PLAN C**  
(3 Bedroom, 2 Bath)  
\$ 336,000

Total Living Area 1,233 sq. ft.  
Entry Lanai 78 sq. ft.  
Garage Option 1 - Covered Lanai 112 sq. ft.  
Option 2 - Family Room with Covered Lanai 316 sq. ft.  
Option 3 471 sq. ft.



First Floor



Option 2 & 3  
Family Room/  
Covered Lanai

Prices quoted are as of July 24, 2020 and will apply to homes purchased in 2020. Prices in the new year 2021 could be higher. Renderings may be slightly altered. Square footage is approximate. Features may vary due to location and site. Gentry reserves the right to make changes to design specifications and make material substitution without notice.

Prices quoted are as of July 24, 2020 and will apply to homes purchased in 2020. Prices in the new year 2021 could be higher. Renderings may be slightly altered. Square footage is approximate. Features may vary due to location and site. Gentry reserves the right to make changes to design specifications and make material substitution without notice.

Prices quoted are as of July 24, 2020 and will apply to homes purchased in 2020. Prices in the new year 2021 could be higher. Renderings may be slightly altered. Square footage is approximate. Features may vary due to location and site. Gentry reserves the right to make changes to design specifications and make material substitution without notice.