



HAWAIIAN HOME LANDS

HAWAIIAN HOMES COMMISSION • DEPARTMENT OF HAWAIIAN HOME LANDS

## **Item G-3**

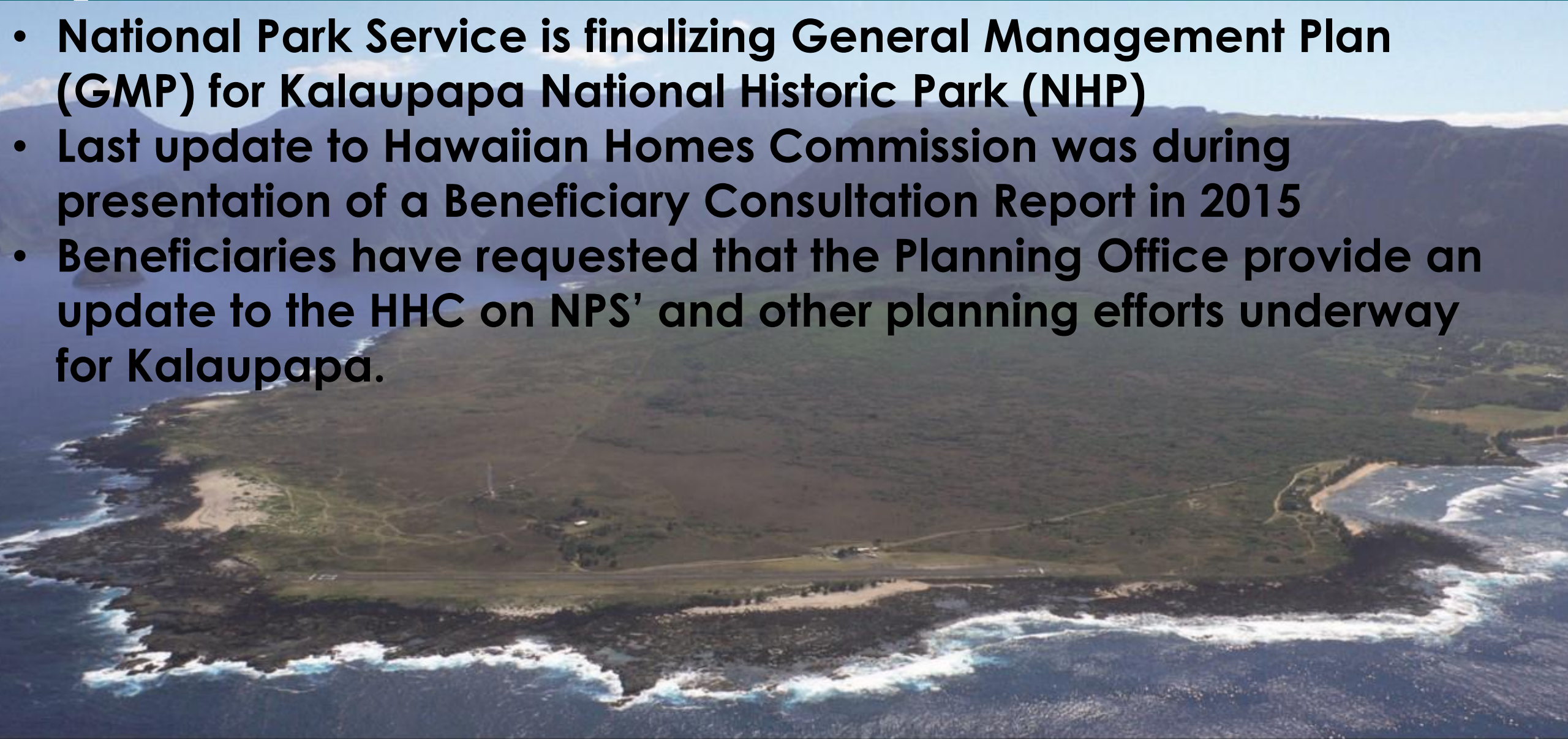
**For Information Only – Update on Kalaupapa  
Management, Kalawao County, Island of Molokai**

**August 18, 2020**



# Background – Purpose of Submittal

- National Park Service is finalizing General Management Plan (GMP) for Kalaupapa National Historic Park (NHP)
- Last update to Hawaiian Homes Commission was during presentation of a Beneficiary Consultation Report in 2015
- Beneficiaries have requested that the Planning Office provide an update to the HHC on NPS' and other planning efforts underway for Kalaupapa.





# Background – Historic Timeline

- Kalaupapa includes the ahupua‘a of Kalaupapa, Makanalua & Kalawao. Waikolu Valley also provided resources.
- Traditional name of peninsula is Makanalua -- estimated to have been settled over 900 years ago.
- Early 1700’s: Site of a major battle over fishing rights between the chiefs of the Kona and Ko‘olau districts of Molokai. The Kona chiefs, backed by Kualī‘i, a chief from O‘ahu, prevailed in the battle, resulting in the Kona and O‘ahu chiefs taking control of Molokai.
- Kalaupapa translates to “the flat plain,” but also may refer to the reef flats off the northern shore of the peninsula.
- Known for kalo from lo‘i of Waikolu, ‘uala, pa‘akai, i‘a and kapa
- Due to lack of development pressure, considered one of the most intact and extensive complexes of cultural sites in the Hawaiian Islands.



# Historic Timeline (cont.)

- 1820's : Hansen's Disease (aka Ma'i Ali'i, Ma'i Pākē, Ma'i Lēpela) present in Hawai'i.
- 1850: Board of Health created by Kamehameha III, Kamehamehaouli
- 1865: "An Act to Prevent the Spread of Leprosy" enacted during reign of King Kamehameha V, Lot Kapuāiwa.
- 1865-present: 8,000 patients isolated at Kalaupapa
- 1889: Patients moved from Kalawao to Kalaupapa
- 1969: End of isolation







# Administration

- **1905: Kalawao County created, along with the other counties, and is administered by the Dept. of Health per HRS Ch. 326**
- **DOH's presence in Kalaupapa, and its provision of health care and other supportive services, will continue as long as there are still Hansen's Disease patient-residents with homes and rights of return**
- **1921: Hawaiian Homes Commission Act passed. Kalaupapa included in the tracts of land to be administered for the benefit of native Hawaiians. Language of Act interpreted to mean that only Kalaupapa ahupua'a (location of Kalaupapa Settlement) is considered Hawaiian Home Lands**
- **1980: Concerns about long term preservation and maintenance prompted creation of the Kalaupapa National Historic Park (P.L. 96-565)**
- **1992: NPS entered into 50-year General Lease (GL 231) with DHHL, which expires in 2041. Lease rent currently is \$250,000 per year.**



# Location & Land Ownership

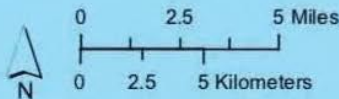
## Regional and Island Context

National Park Service  
U.S. Department of the Interior



- Kalaupapa National Historical Park
- North Shore Cliffs National Natural Landmark
- County Boundary
- Kalaupapa Leprosy Settlement National Historic Landmark

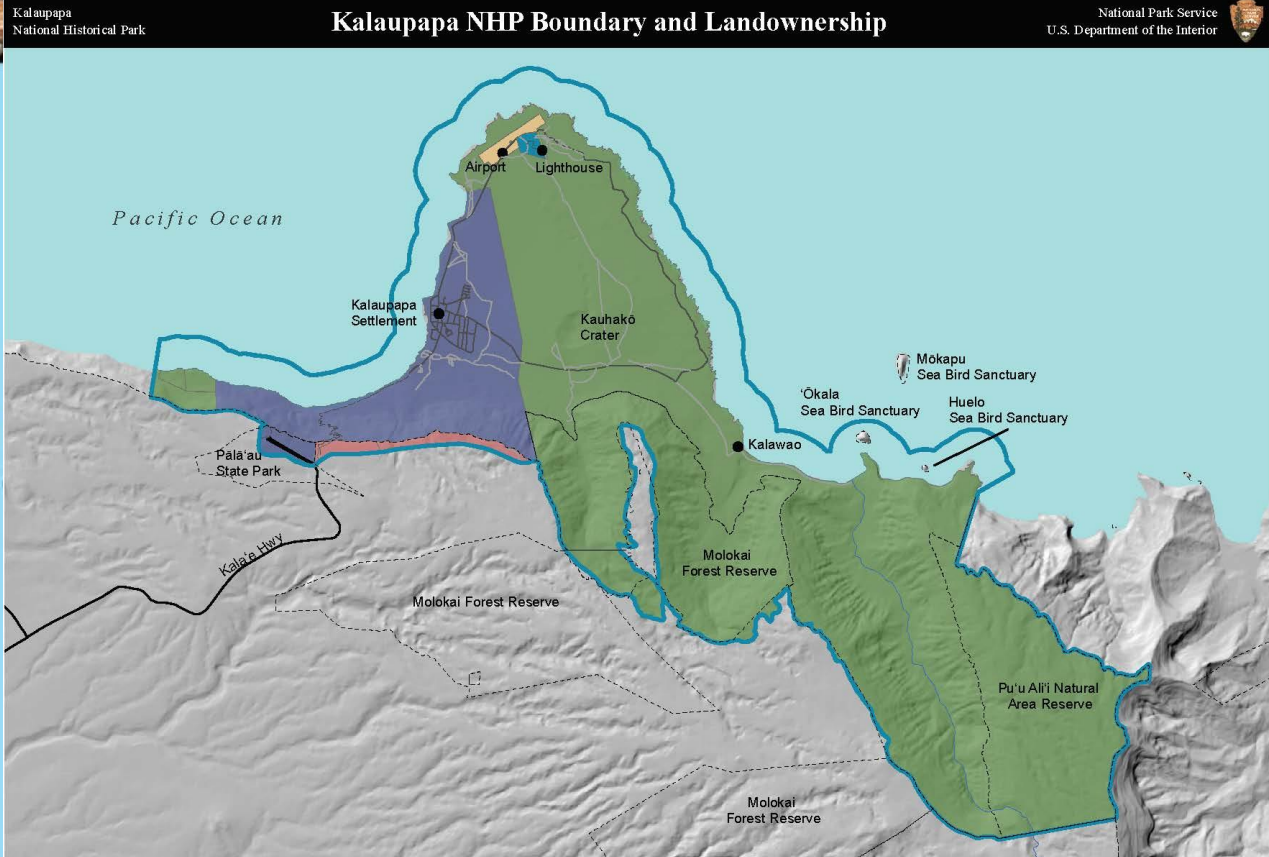
Data Sources:  
National Park and National Natural Landmark boundaries (NPS)  
Judicial Districts (Hawai'i Office of Planning, 2006)



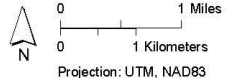
The NPS makes no warranty, express or implied, related to the accuracy or content of this map.

## Kalaupapa NHP Boundary and Landownership

National Park Service  
U.S. Department of the Interior



- Landownership**
- Kalaupapa National Historical Park
  - Reserve Boundaries
  - National Park Service
  - State Dept. of Hawaiian Home Lands
  - State Dept. of Land and Natural Resources
  - State Dept. of Transportation
  - Private land within park boundary



Projection: UTM, NAD83  
PWR, San Francisco - GIS  
Date Saved: 11/19/2013



# Agencies with Kuleana in Kalaupapa

Agency	Kalaupapa Kuleana
DHHL	Manage long-term General Lease No. 231 (LMD); update & implement Molokai Island Plan for Kalaupapa-Pālā'au (PO); participate in interagency coordination & transition planning (LMD, LDD, PO, OCH); coordinate beneficiary outreach & consultation on NPS GMP (PO)
DOH	Manage buildings, programs such as visitors and tours, & resources under DOH control; provide healthcare, meals, interior home repair, yardwork & other supportive services to patient-residents, administration & recordkeeping; administer applicable laws in Kalawao County
NPS	Maintain & operate water & fuel distribution, electrical & waste management systems; maintain roads; preserve & restore historic structures, cemeteries & cultural sites; maintain public grounds & landscaping; maintain interpretive signage at Pālā'au Lookout; assist DOH in enforcement of regulations; fire suppression; first aid and rescue operations for visitors; major/exterior repairs to patient-resident homes.
DOT	Manage airport operations; maintain & enhance buildings, runway, lighting & fuel systems; provide safety & fire protection services at airport.
DLNR	Manage conservation & Forest Reserve areas; control invasive species & animals in coordination w/NPS; environmental & natural resource management in Pu'u Ali'i Natural Area Reserve.
Maui County	Provide Emergency Response via a Mutual Aid Agreement – tsunami, wildfire, hurricane etc.



# Agency Coordination

- **April 2016: Kalaupapa Transition Interagency Working Group formed**
- **Attendees: DOH, DHHL, NPS, State DOT-Airports, DLNR, Maui County, DOI-ONHR**
- **DHHL Team includes staff from PO, LMD, LDD, OCH**
- **Meetings have primarily focused on day-to-day management, repair, and maintenance issues**
- **Goal is to identify and mitigate any challenges or issues that could impact a smooth transition once DOH no longer has kuleana in Kalaupapa**





# Existing Plans

## DHHL Molokai Island Plan (2005)

- Planning Area of 1,468 acres includes Pālā'au (Apana 3), currently under license to DLNR as a State Park
- Land Use Designations (LUD's) are Special District, Community Use, Conservation and Commercial (in Pālā'au)

**Molokai Regional Plan 2010 & Update 2019): Kalaupapa was discussed but no Priority Projects were identified**

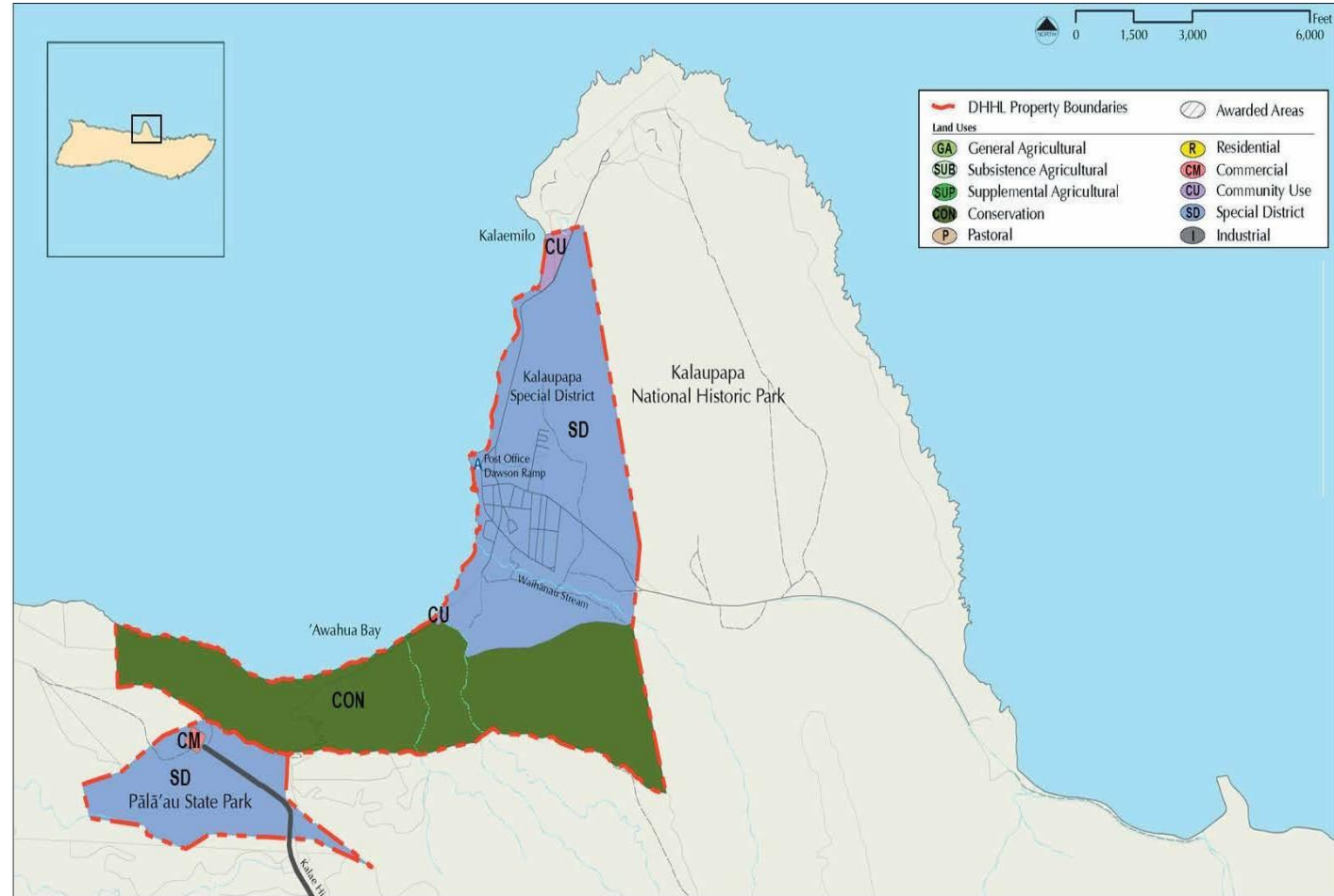


Figure 6.2 - Kalaupapa-Pālā'au Preferred Land Use Plan



# LUD Acreage Summary

Land Use Designation (LUD)	Acres in Kalaupapa	Acres in Pālā'au	Total	% of Molokai LUD
Special District	621	226	847	15
Conservation	0	609	609	93
General Ag	0	0	0	0
Residential	0	0	0	0
Pastoral	0	0	0	0
Subsistence Ag	0	0	0	0
Supplemental Ag	0	0	0	0
Industrial	0	0	0	0
Community Use	7	0	7	3
Commercial	0	5	5	8
TOTALS	628	840	1,468	5

- **Special District for settlement area requires additional planning**
- **Guidelines needed – work with Patient's Advisory Council, Department of Health (DOH), NPS**
- **Idea to establish a pu'uhonua (traditional concept of a place of refuge) - envisioned as a native Hawaiian healing and wellness center.**

- **Five acres of Commercial Use in Pālā'au envisioned to create a cultural community center appropriate to perpetuation of traditional cultural practices of Hawai'i but that is specific to historical legacy of Molokai, Kalaupapa specifically**

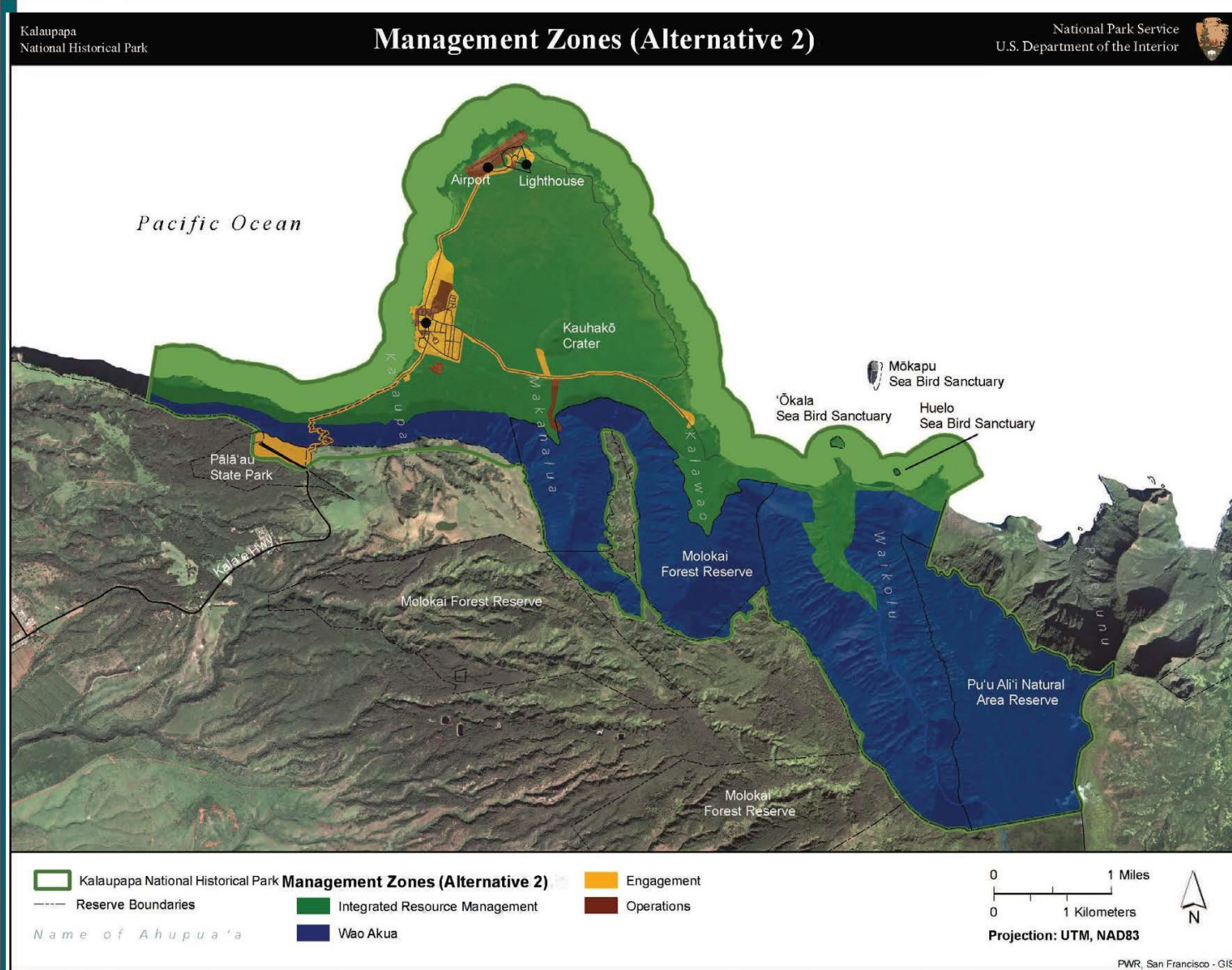


# NPS General Management Plan (GMP)

- **2009: NPS starts planning process to develop a General Management Plan for the Kalaupapa NHP. DHHL participates in Scoping phase**
- **2011: DHHL holds two Beneficiary Consultation meetings, with NPS participation, topside during NPS' Preliminary Alternatives phase**
- **2015: DHHL holds two Beneficiary Consultation meetings, with NPS participation, topside during NPS' Preferred Alternatives phase**
- **June 2015: Planning Office presents informational submittal to HHC on BC (Exhibit A)**
- **July 2015: Planning Office presents action item requesting acceptance of Beneficiary Consultation Report (Exhibit B)**
- **November 2018: NEPA for GMP was changed from an EIS to EA**
- **Three comment letters reflecting comments and concerns of both DHHL and beneficiaries were sent to NPS as part of this process**



# NPS Management Zones



All related documents can be downloaded here:

<https://parkplanning.nps.gov/documentsList.cfm?projectID=24883>





# Summary of Kalaupapa Planning Processes & Related Beneficiary Feedback

Year	Plan / consultation Process	Summary of Beneficiary Feedback
2005	Moloka'i Island Plan	Preserve legacy; respect patients; only for education; teach old ways; NPS must work with Native Hawaiians.
2010	Moloka'i Regional Plan	DHHL engage with NPS in planning; ensure traditional access & gathering rights; Pālā'au separate from Kalaupapa; ag homesteading; consult with beneficiaries
2011	NPS GMP/ Preliminary Alternatives	Consistency with DHHL Molokai Island Plan; Support for Alternative B; Traditional and customary practices & access to resources; preference for training, employment (inc. management-level) and concessions; hunting; special access days; restrictions for overnight stays; cultural input; task force of stakeholders to provide ongoing long-term guidance; reuse of health facilities for traditional healing
2015	NPS GMP/ Preferred Alternative	Identify existing facilities that could be reused by beneficiaries; Sunset date for GMP and exit strategy for NPS; desire for beneficiary-focused stewardship of cultural resources & restoration and reuse of traditional agricultural complexes; calculate carrying capacity; reestablish traditional recreational activities; consistent outreach to topside Molokai 'ohana; remove boundary proposal adding Pelekunu and Pu'u o Hoku Ranch
2019	Change from EA to EIS	Lack of Consultation prior to change; removal of important information from EA; Comment period over Christmas; too short of a comment period.



# Next Steps

The Planning Office has received several beneficiary requests to form and start holding meetings of a Kalaupapa Stakeholder/ Beneficiary Working Group with the following criteria for composition:

- Ka 'Ohana O Kalaupapa has a 25-year history of actively working with patient residents, their 'ohana and lineal descendants of patients, as well as extensive knowledge of the history of Kalaupapa and current conditions in the Settlement.
- Beneficiaries of the HHL who are on the Molokai Island wait list. These applicants will be impacted by any decisions relating to Kalaupapa.
- Beneficiaries of the HHL who have family members buried in Kalaupapa.
- DHHL beneficiaries who have participated in the NPS General Management Plan and Section 106 Consultation processes.

The Planning Office has also received beneficiary requests to update the HHC at regular intervals as the various planning efforts discussed in this submittal proceed.



# Update on Kalaupapa Management

**Questions and Feedback?**







# Mahalo

