



Kapolei  
Community  
Development  
Corporation

# Kapolei Community Development Corporation

- KCDC is a 501(c)(3) non-profit organization that serves the homesteads in Malu'ōhai, Kaupe'a, Kānehili and Kauluokaha'i in the Kapolei Region
- Founded on tenets of Community, Culture, Education & Partnerships in 2008
- Volunteer non-paid board



**Scott  
Abrigo**  
President  
*Malu'ohai*



**Chantal  
Keli'iho'omalū**  
Secretary  
*Kānehili*



**Kekoa  
Gonzales**  
Director  
*Kānehili*



**PeeWee  
Ryan**  
Vice  
President  
*Kānehili*



**Jame  
Schaedel**  
Director  
*Malu'ohai Resident  
Association  
Designate*



**Michelle  
Kauhane**  
Director  
*Kaupe'a  
Homestead  
Association  
Designate*



**Leonani  
Puailihau**  
Treasurer  
*Malu'ohai*



**Guy  
Kapeliela**  
Director  
*Kaupe'a*



**Alikea  
Kea**  
Director  
*Kānehili  
Community  
Association  
Designate*



Kapolei  
Heritage  
Center  
22,650 SF

DHHL

Kealahou St

Kinoiki St

Kamokuiki St

Kānehili

Kekahili St

Kualaka'i Parkway

HFD

Ho'omaka  
Marketplace  
4.992 AC

Kapolei Parkway

Ka Makana Ali'i





# Kapolei Heritage Center

- 91-1250 Kinoiki Street
- Constructed, managed and operated by KCDC
- KCDC's conduit to serving the Kapolei Homestead Region



# Built Phase 1 (2016)

- 2 Classrooms
- Certified Kitchen
- Convenient online booking
- [www.kapoleiheritage.org](http://www.kapoleiheritage.org)
- # of Users (Average)
  - 350 Week
  - 1,400 Month
  - 16,800 Annual (11,760 NH)



# Proposed Phase 2 - Hālau

- 350+ People Capacity
- Flex space (1 large space or 3 smaller spaces)
- Build parking lot
- Accommodate large events
- More space for programs







# Our Progress





# KCDC Partnerships



HAWAIIAN  
HOME LANDS  
HAWAIIAN HOMES COMMISSION  
DEPARTMENT OF HAWAIIAN HOME LANDS

Homestead  
Associations

- Malu'ōhai
- Kaupe'a
- Kānehili



ULU A'E  
LEARNING CENTER



# Kupuna and Keiki Programs

- Partnered with Alu Like on a Kupuna program
  - Monday Mornings
  - 35-40 Kupuna
- Partnered with Keiki O Ka 'Āina on a Keiki/Parent program
  - Tuesday - Friday
  - Classes are full!



# Free Ukulele Classes

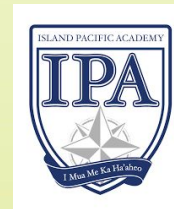
- KCDC partnered with Ukulele Project Hawaii
- Classes on Monday evenings
- Beginning and advanced classes
- Online registration
- [www.UkuleleProjectHawaii.com](http://www.UkuleleProjectHawaii.com)
- Free





# Honouliuli Educational Fair - 1/11

- 2nd Annual Education Fair
- At Island Pacific Academy
- Hawaiian focused education opportunities in the region.



# Hāpai Pōhaku Scholarship Fund

- Funded by an \$50K endowment from Malu'ōhai, Kaupe'a, Kānehili & KCDC
- **\$2,000.00** annual scholarship
- Assist Kapolei homestead students pursuing higher education
- [www.hawaiicommunityfoundation.org](http://www.hawaiicommunityfoundation.org)



Ms. Jaelyn Domingo




HAWAI'I COMMUNITY  
FOUNDATION

# Homestead Health Survey



Malu'ōhai  
Residents'  
Association

Kānehili  
Community  
Association

  
Kapolei Community  
Development Corporation

Survey Open House  
**March 3 (Tues.)**  
**March 10 (Tues.)**  
6:30 pm - 8:00 pm  
Kapolei Heritage  
Center  
91-1250 Kinoiki St.  
Kapolei HI 96707

## Kapolei Homestead Health Survey

Look for the survey in the mail.  
Complete and return it, to receive  
a \$15 Foodland Gift Card!

Help us better understand the issues  
related to health and wellbeing in our  
Kapolei homestead community. The  
results will help us advocate for resources  
and services that will benefit our Kapolei  
homesteads in the future. Complete the  
survey or come to an open house  
if you have questions, need help or  
want to turn it in to get your  
free gift card.

## HOMESTEAD HEALTH SURVEY





# Covid Response

- Partnered with KS, KROC Center Hawaii, Alu Like, CNHA, Hawaii Community Foundation, USDA, Longs Drugs and Others
- 38,000 Meals Distributed
- 1,100 Covid Kits
- Raised \$15,000 in Gift Cards





Kapolei  
Heritage  
Center  
22,650 SF

DHHL

Kealahou St

Kinoiki St

Kamokuiki St

Kānehili

Kekahili St

Kualaka'i Parkway

HFD

Ho'omaka  
Marketplace  
4.992 AC

Kapolei Parkway

Ka Makana Ali'i





# Ho'omaka Marketplace



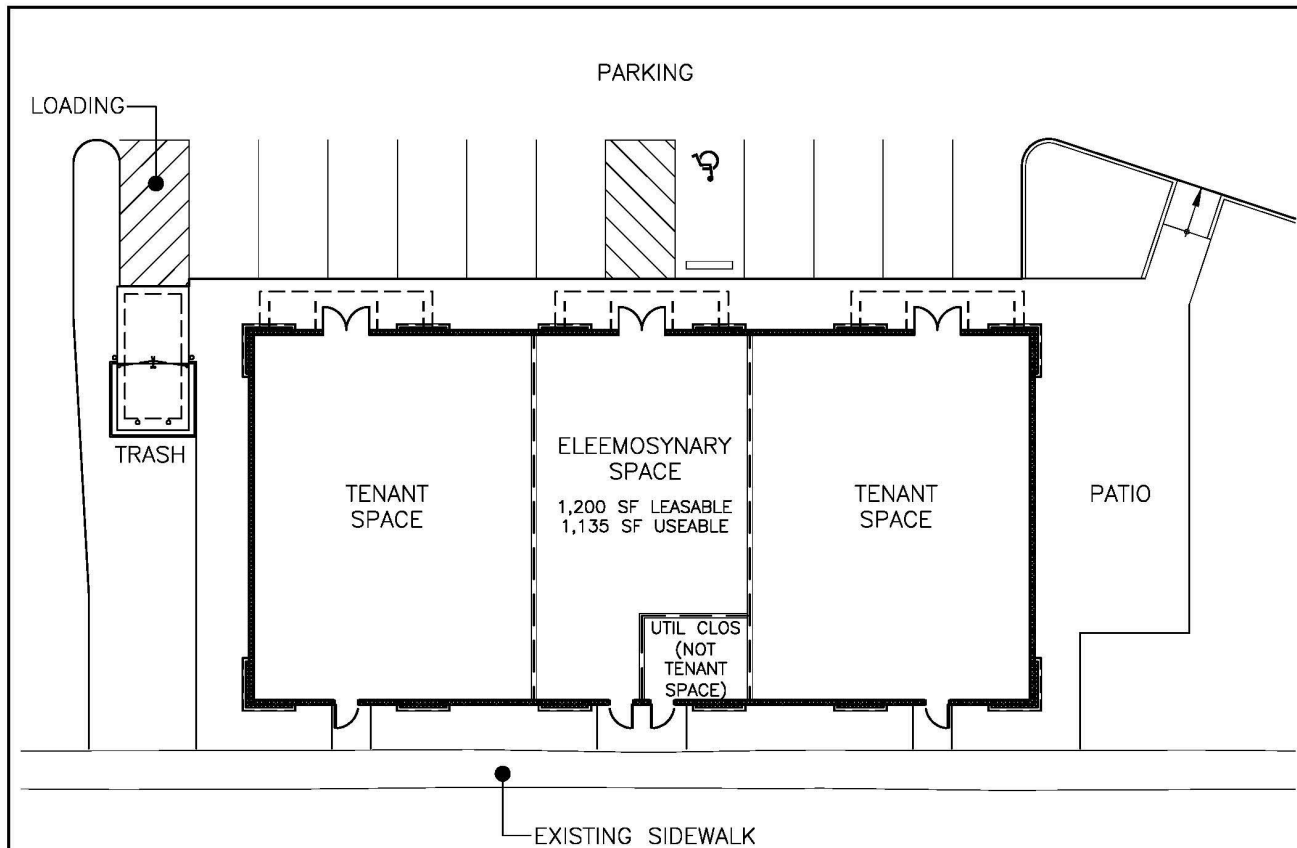
- Ho'omaka - “To Begin”
- Commercial zoning
- KCDC partnered with KZ Companies
- Provide KCDC with the resources for a sustainable future

**HO'OMAKA**  
MARKETPLACE









SCALE: 1/16" = 1'-0"

# HO'OMAKA MARKETPLACE

PAD 3 - CONCEPTUAL FLOOR PLAN

DEVELOPER

KE WONG, LP  
1000 KALANIAN'IMAMANE  
SUITE 100  
HONOLULU, HAWAII 96813  
PHONE: (808) 475-2700  
FAX: (808) 475-2777

ARCHITECT

**ahl.**  
ARCHITECTS  
1000 KALANIAN'IMAMANE  
SUITE 100  
HONOLULU, HAWAII 96813  
PHONE: (808) 475-2700  
FAX: (808) 475-2777

9/4/10









**MAHALO!**