



DEPARTMENT OF HAWAIIAN HOME LANDS

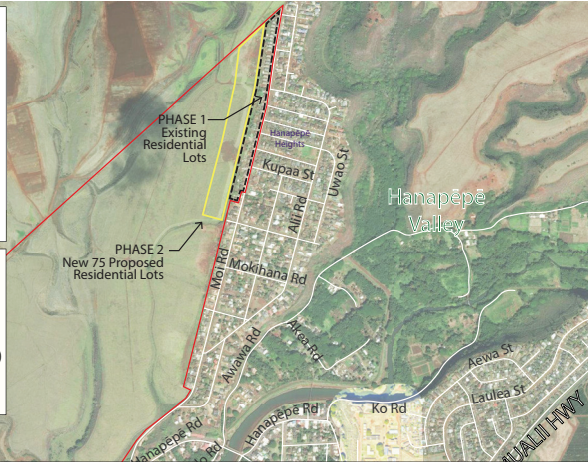
Beneficiary Consultation

Hanapepe Homestead Community



Legend

- Project Site (365 acres)
- Phase 1 (Existing 47 Residential Lots)
- Phase 2 (New 75 Residential Lots)



THIS IS NOT AN AWARDS NOTICE



DEPARTMENT OF
HAWAIIAN HOME LANDS

P.O. Box 1879 Honolulu, Hawai'i 96805

PRSRD STD
U.S. POSTAGE
PAID
HONOLULU, HI
PERMIT NO. 574

JOIN US

Hanapēpē Homestead Virtual Beneficiary Consultation Meeting #3

**Thursday, September 3
6:00 p.m. – 7:00 p.m.**

**Online Meeting
using Microsoft Teams**

dhh.hawaii.gov/po/kauai

For more information, please contact DHH at
Nancy.m.mcpherson@hawaii.gov