



HAWAIIAN HOME LANDS

HAWAIIAN HOMES COMMISSION • DEPARTMENT OF HAWAIIAN HOME LANDS

E-1

**Declare a Finding of No Significant Impact (FONSI) for the
DHHL Waikupanaha Agricultural Lots Final Environmental
Assessment**

March 16-17 2020



O'ahu Waitlist and O'ahu Lands

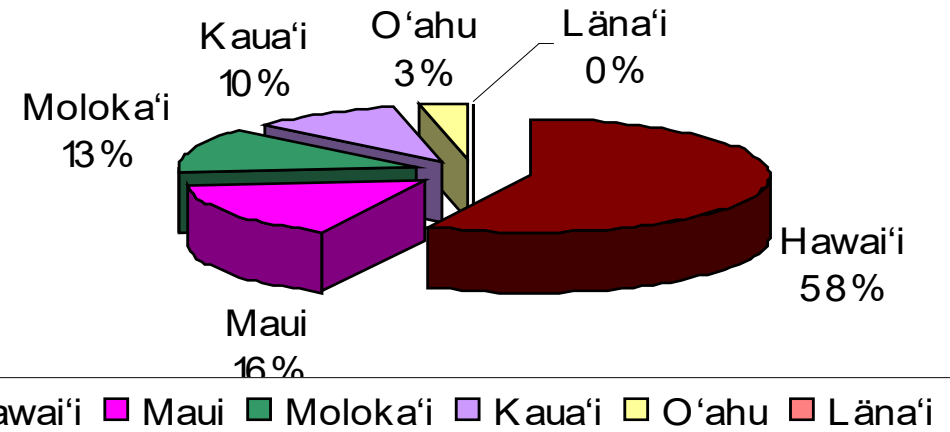
Applications

42,213 Statewide

32% O'ahu Applications

WAIT LIST	APPLICATIONS
Residential	10,533
Agricultural	3,606
Pastoral	n/a
TOTAL O'AHU:	14,139

Hawaiian Home Lands Trust
Percent Acres by Island



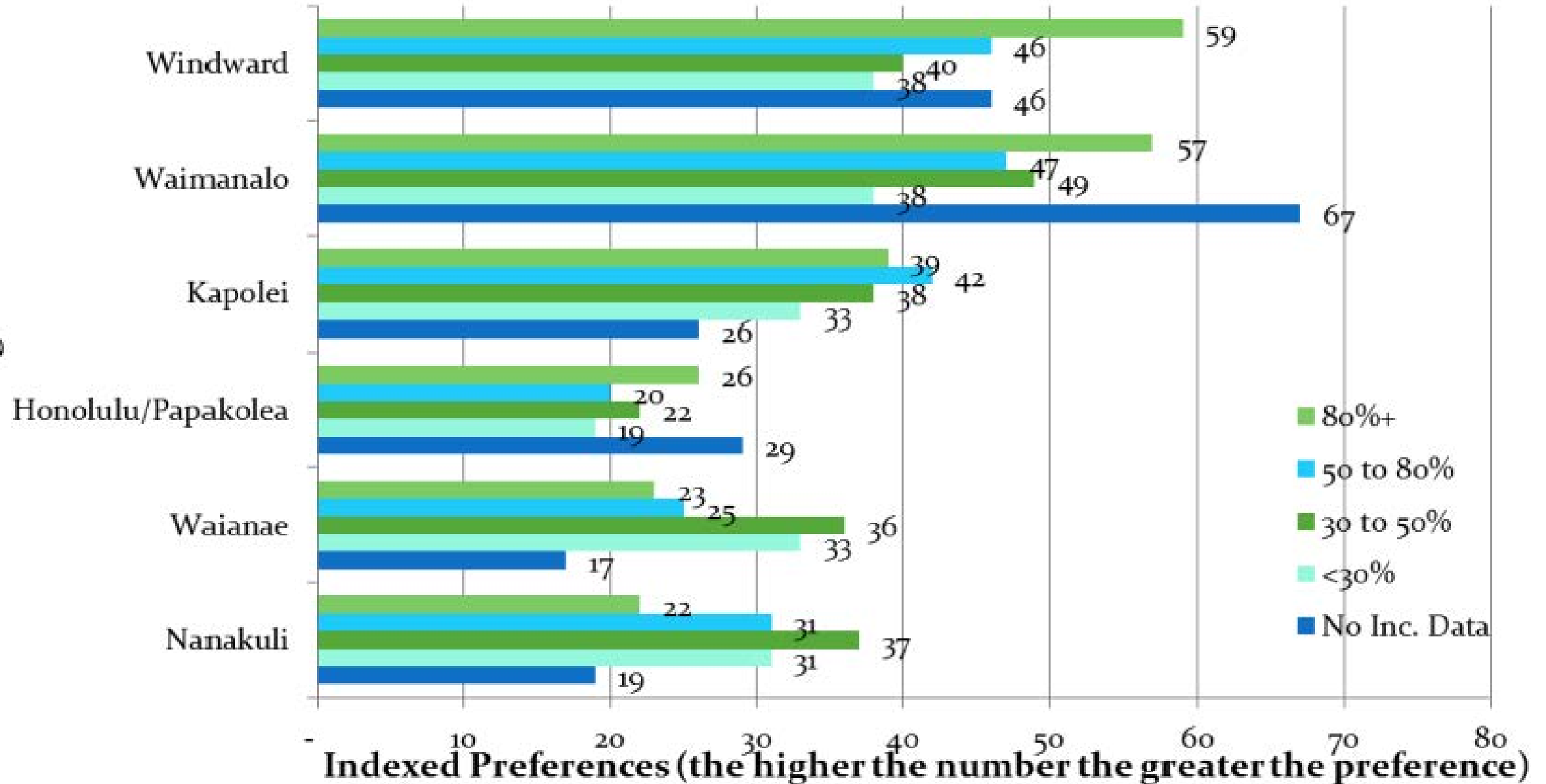
8,154 Acres of DHHL Lands on O'ahu

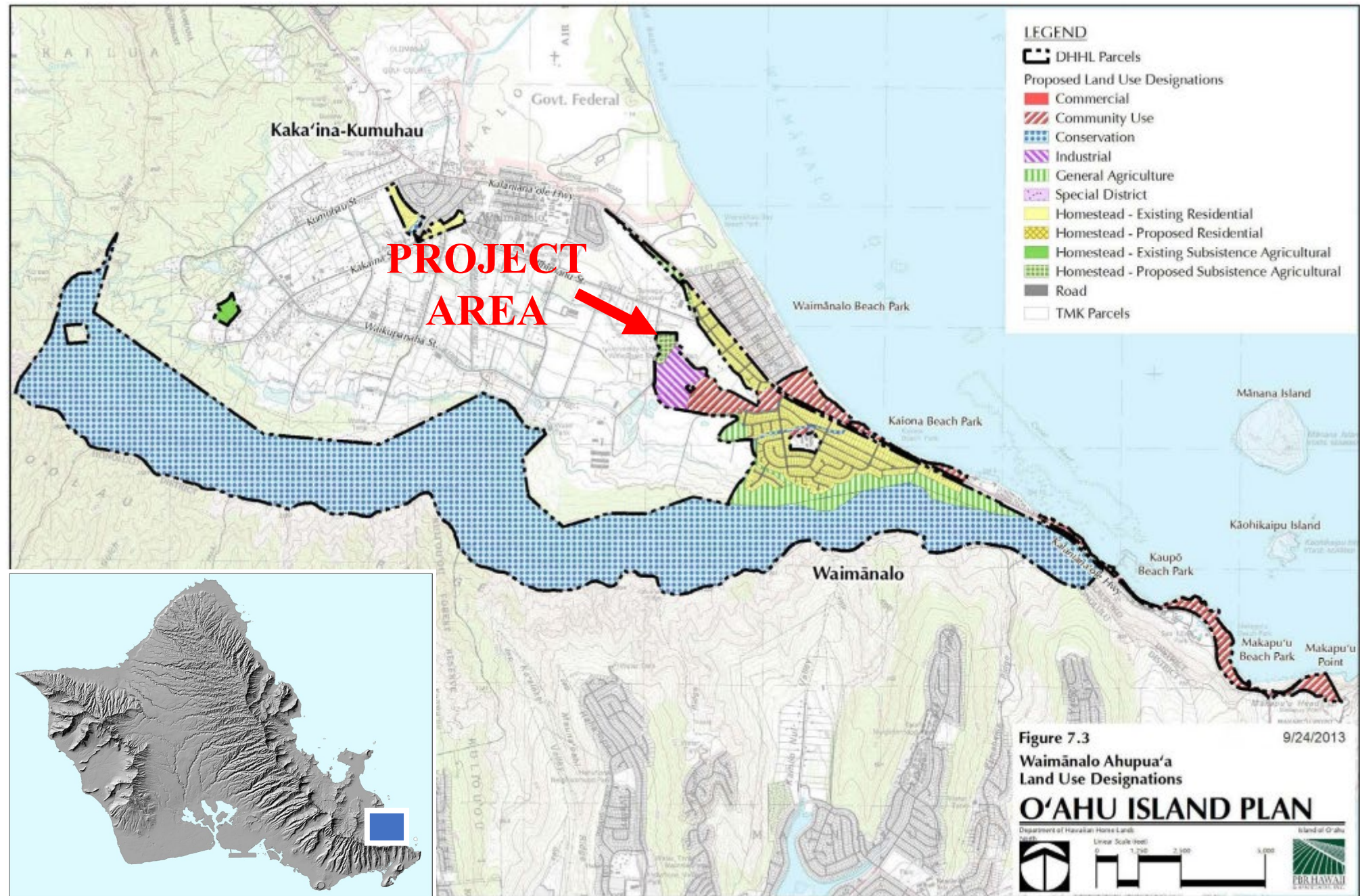


- Adopted by the HHC in 2014
- Identifies the HHC's land use policy for the 8,000+ acres of DHHL land on Oahu
- Identifies priority areas for development (high, medium, low)

Preferred Ag Locations within Current DHHL Lands

DHHL Current Ag Land Locations

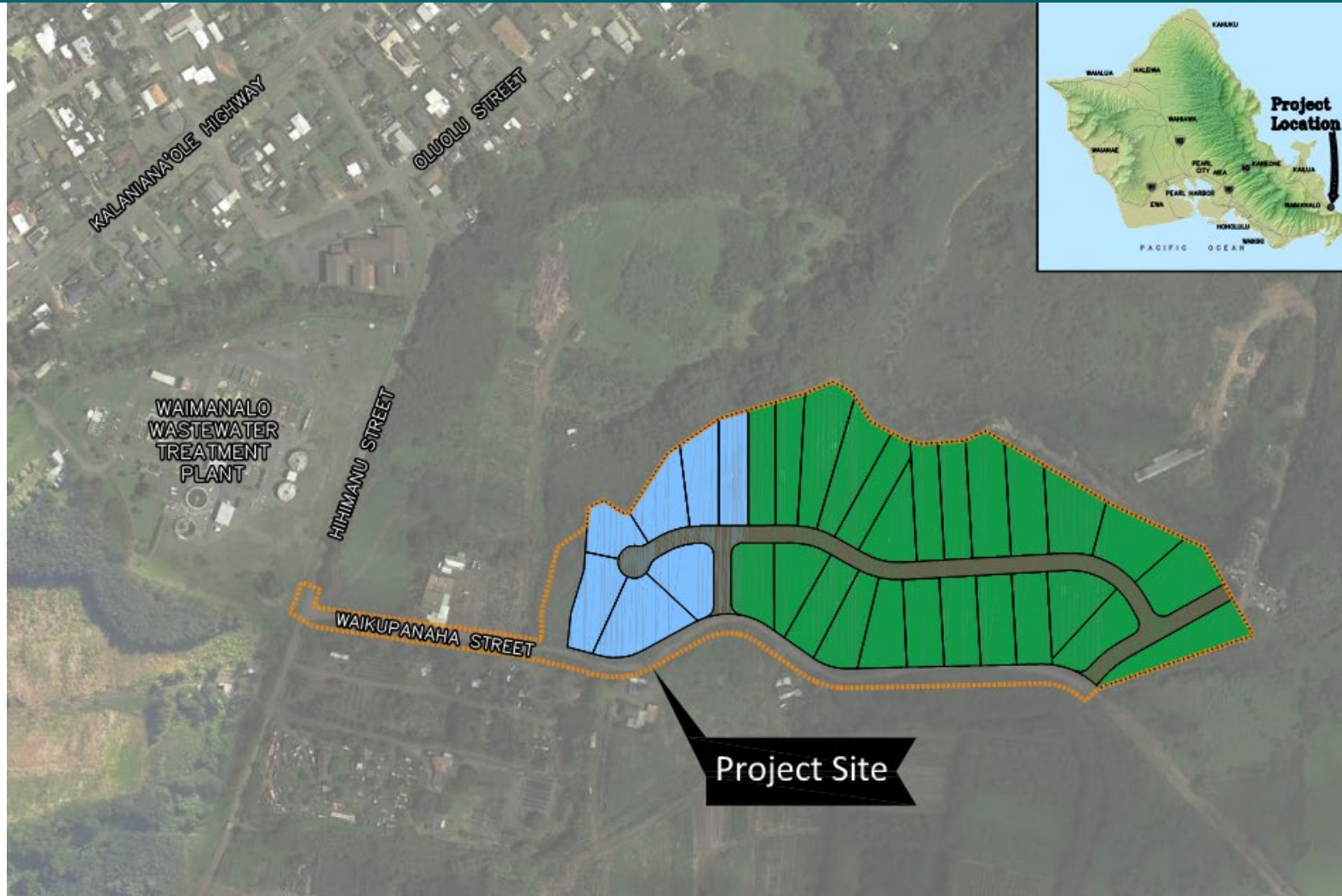






Waikupanaha Agriculture Lots

- Consolidate and Re-Subdivide 30-acre Project Site
- Approximately 30 Subsistence Agriculture Lots
- Lot Size Between 0.50 to 0.75 Acres
- New Utility Infrastructure (Water, Sewer, Electric, Drainage, Communication)



LEGEND

- | | |
|------------------|---------------------|
| PROPOSED ROADWAY | PROPERTY LINE (NEW) |
| PHASE 1 | PROJECT LIMITS |
| FUTURE PHASES | |

Waikupanaha Agricultural Lots Conceptual Site Layout



Site Characteristics

- Project location is within an area that supports agriculture
- DHHL's parcels have previously been altered by land-disturbing activities
- Current site uses include agricultural and equestrian activities









Project Opportunities

- Provide homestead lots for DHHL beneficiaries
- Address environmental conditions (e.g., solid waste concerns)
- Improve Waikupanaha Street to Hihimanu Street
- Provide sewer, water/fire protection, irrigation, drainage, electrical, and communication infrastructure
- Install drainage facilities to address storm water runoff



Mitigation Measures for Consideration

- **Water Resources**
 - Minimize the amount of soil transported in stormwater runoff by utilizing infiltration/sediment basins, grassed swales, and plantings of ground cover vegetation for the development
- **Address environmental conditions (e.g., solid waste concerns)**
 - Properly remove and dispose of solid waste discovered on the premises during construction
- **Natural Resources**
 - During construction, avoid the removal of trees containing bat roosts during the pupping season; avoid disturbances to owl nesting activities; reduce night-time light sources that can disorient seabirds



Mitigation Measures for Consideration

- **Historic and Cultural Resources**
 - Immediately halt construction activities and notify the State Historic Preservation Division in the event of inadvertent discoveries of buried or potentially important resources.
- **Circulation and Traffic**
 - Develop a traffic management plan and conduct activities in accordance with issued permits to minimize disruptions during construction and to support safe travel



Alternatives Considered

- No action
- Delayed action
- Alternative site (other DHHL land or new area not yet acquired)
- Residential homesteads on existing site
- Preferred alternative is the proposed action



Significance Criteria

- 13 significance criteria established in HAR §11-200-12
 - (1) Involves an irrevocable commitment to loss or destruction of any natural or cultural resource;
 - (2) Curtails the range of beneficial uses of the environment;
 - (3) Conflicts with the State's long term environmental policies or goals and guidelines as expressed in Chapter 344, HRS; and any revisions thereof and amendments thereto, court decisions, or executive orders;
 - (4) Substantially affects the economic or social welfare of the community or State;
 - (5) Substantially affects public health;
 - (6) Involves substantial secondary impacts, such as population changes or effects on public facilities;



Significance Criteria (Continued)

- (7) Involves a substantial degradation of environmental quality;
- (8) Is individually limited but cumulatively has considerable effect on the environment, or involves a commitment for larger actions;
- (9) Substantially affects a rare, threatened or endangered species or its habitat;
- (10) Detrimentally affects air or water quality or ambient noise levels;
- (11) Affects or is likely to suffer damage by being located in an environmentally sensitive area, such as a flood plain, tsunami zone, beach, erosion-prone area, geologically hazardous land, estuary, fresh water, or coastal waters;
- (12) Substantially affects scenic vistas and view planes identified in County or State plans or studies;
- (13) Requires substantial energy consumption.



Revisions and Inclusions

- Written comments received during the public review period for the Draft EA resulted in minor corrections in the Final EA
 - Citation in Section 8.0 References identifies and links to the *Koolau Poko Sustainable Communities Plan*
- DHHL's beneficiaries provided a wide range of comments about the Project including concerns that are beyond the purview of the EA to address
 - Comment matrix and DHHL's responses are included in Appendix H



Finding of No Significant Impact (FONSI)

- DHHL received no additional cultural information during the public review and comment period for the Draft EA
- Anticipated impacts are mitigable; Project is not likely to have a significant impact on the physical or human environment
- Next steps for Final EA if HHC issues a FONSI declaration
 - Submit Approved Final EA/FONSI to Office of Environmental Quality for publication in *The Environmental Notice*



Mahalo



DEPARTMENT OF HAWAIIAN HOME LANDS

www.dhhl.hawaii.gov