

'AINA HO'OPULAPULA



P

DEPARTMENT OF HAWAIIAN HOME LANDS
Annual Report

1981-82

ERRATA SHEET FOR 1981-1982
DEPARTMENT OF HAWAIIAN HOME LANDS
Ho'opulapula Annual Report

Please note the following corrections that need to be inserted. We apologize for any misunderstanding or confusion from the errors.

- . Page 19: Hawaiian Home Development Fund. Total disbursement for 1981 should read \$5,699,004 instead of the printed \$5,669.004.
- . Page 20: Hawaiian Home Operating. Fund Total receipts for 1982 should read \$149,498 instead of the printed \$149,493.
- . Page 23: Loan Activities. Total delinquent amounts should read \$451,847 instead of the printed \$446,847.
- . Page 62: Hawaiian Home Lands Employees. Glenda Garcia, Darrell Yagodich and Hardy Spoehr should be listed under a separate category entitled Native Hawaiians Development Office (NHDO). The Governor approved major reorganization of the Department to create NHDO on Dec. 17, 1981. The Department of Personnel Services approved civil service exemptions on Jan. 14, 1982.

Addendum to pp 19-23:

Explanation of total cash available in both 1981 and 1982. The amounts reflected in total cash available on pp 19-23 include redemptions of time certificates of deposit. This account represents the accumulative amount of cash maturing from short-term time certificates of deposit during the year.



STATE OF HAWAII

George R. Ariyoshi
Governor

CONTENTS

Chairman's Message	1
Hawaiian Home Commission Act, 1920	2
Hawaiian Home Lands Programs	2
I. Ka Po'e, The People	
Hawaiian Homes Commission	4
Department Formal Organization Structure	4
Residential Program Summary	5
Agricultural Program Summary	6
Agricultural Lease Applications	7
II. Ka 'Aina, The Land	
Land Management Division	10
Land Use Summaries	12
Revenue Producing Land Summaries	13
III. Ke Kala, The Money	
Fiscal Office	16
Income Summary	18
Hawaiian Home Development Fund	19
Hawaiian Home Operating Fund	20
Native Hawaiian Rehabilitation Fund	21
Hawaiian Home Interest Fund	22
Hawaiian Home Administration Account	23
Loan Activities	26
Leasing Activities	26
IV. Papa Hana, The Programs	
Native Hawaiian Development Office	28
Hawaiian Home Lands Activities	30
A Look To The Future	31
APPENDIX	
CIP Projects Summary	34
Development Fund Projects Summary	36
Housing Program Summary	37
Home Repairs Program Summary	37
Hawaiian Home Lands Occupied by Government Agencies Summary	38
Revenue Producing Lands Used by Government Agencies	38
Hawaiian Home Lands Under Conservation Summary	38
Governor's Executive Orders Summary	39
Hawaiian Home Lands Under DLNR Management	41
Revocable Permits	43
Hawaiian Home Lands General Lease Summary	43
General Leases	44
Hawaiian Home Lands License Summary	48
Church License Summary	48
Church Licenses	49
Licenses	50
Hawaiian Home Lands Revocable Permit Summary	55
Revocable Permits	55
Hawaiian Home Lands Rights of Entry Summary	57
Right of Entry Permits	58
Subleases	59
1982 Beautification Contest Winners	61
Hawaiian Home Lands Employees	62

CHAIRMAN'S MESSAGE



Georgiana Keonaona Padeken

Governor Ariyoshi:

It is with pleasure that I transmit the Department of Hawaiian Home Lands' Annual Report for Fiscal Year 1981-1982 summarizing the Department's programs and activities.

The Hawaiian Homes Commission Act (HHCA) of 1920 established by the U. S. Congress provides Native Hawaiian access to lands administered and managed through Hawaiian Homes Commission programs.

Programs include residential and agricultural leases, loans for developing and maintaining homesteads, economic development, negotiated Native Hawaiian general leases, and revenue-producing activities.

Although economic constraints continue to impede rapid achievement of goals, the Commission and the Department continuously strive to address Native Hawaiian changing needs. Progress continued this year in the residential and agricultural areas.

Five Development Plans are in progress as an adjunct of the Department's General Plan which will serve as a framework and guide for future development. A variety of CIP projects are under way to plan, design, develop, and construct over 350 homes on Oahu, Kauai and the Big Island. In addition, work continues on Molokai's Domestic Water System Improvements and the Waimanalo Makapuu Interceptor Trunk Sewer System.

Additional progress has been made in the agricultural program, including continued contracts with the University of Hawaii to provide technical assistance to homestead farmers. Approximately 43 farm awards were made in Panaewa, Hawaii. Ground was broken for the first increment of 34 farm lots on Kauai this year.

Loan ceilings were increased by the 1982 Legislature from \$35,000 to \$50,000, as well as a provision for a residence on an agricultural or pastoral lot. Additional acreage is also provided for successful, cultivating farm lessees. Individualized farm plans are now required as a part of the farm program.

The Native Hawaiian Development Office (NHDO) has begun to implement activities in the area of economic development, including short term projects, a Grants Program, and services such as education, business, technical assistance, and loans. The revenue producing lands program has stepped up its efforts through the adoption and implementation of a sublease participation policy.

Federal auditors began the task of renewing the Department's programs for the first time in its history. The Federal-State Task Force initiated its work to examine the program and will come up with recommendations for improvement.

The Department faces difficult challenges in the years ahead but continues its many efforts to serve the best interests of the Native Hawaiian beneficiaries so that 'Aina Ho'opulapula, the land and its people will flourish.

Respectfully submitted,

A handwritten signature in cursive script that reads "Georgiana K. Padeken".

Georgiana K. Padeken
Chairman

HAWAIIAN HOMES COMMISSION ACT, 1920



Prince Jonah Kuhio Kalanianaʻole

July, 21 Signed into law by President Woodrow Wilson

- Championed by Prince Jonah Kuhio Kalanianaʻole, Hawaii's Delegate to Congress
- Brought to reality his wishes and those of the 1919 Legislature of the Territory of Hawaii
- For the benefit of native Hawaiians
- 200,000 acres designated "available lands"
- For agriculture and pastoral leases to native Hawaiians

HAWAIIAN HOME LANDS PROGRAMS

To carry out the HHC Act of 1920, as amended, the Department has focused on the distribution of its land base to qualified Native Hawaiians through its homesteading program. The homesteading program originated as a five-year farm and ranch pilot project. In 1923, a residential component was authorized to address a growing need for housing.

More than 2,600 homes currently exist on one percent of the Department's lands. The Department currently services approximately 3,000 native Hawaiian families, or an approximate population of 18,000.

The need for housing remains critical. The Department's statewide waiting lists include more than 6,500 eligible native Hawaiians on the residential and more than 1,000 eligible applicants on the agricultural waiting lists. More than 7,500 wait for Department homestead program opportunities.

A tremendous financial commitment is essential to addressing existent needs. Governor George Ariyoshi and the State Legislature have been very supportive in recent years through the statewide Capital Improvement Program (CIP). CIP projects, generally financed by General Obligation Bonds, provide new facilities or increase the value of existing fixed assets.

To ultimately provide homesteading opportunities, the Department must undertake many steps, include planning, detailed designs and construction of site improvements. Lot grading, access roadways, and utility systems, including drainage systems, sewer, water, street lights, electrical power, telephone, and cable TV are generally required prior to actual home construction.

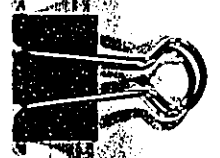
The availability of loans is also essential. Additional services such as erosion prevention, environmental assessment, construction engineering, and surveying are also required.

The Department must also maintain and repair existing roads, drainage, wells, reservoirs, and other facilities under its jurisdiction. All aspects of these projects and programs are costly.

Through its general leases for commercial and industrial purposes, the Department generates its primary source of funding for administrative and operating expenses. Economic development is the focus of the Department's newest program authorized by 1978 Constitutional amendments which established the Native Hawaiian Rehabilitation Fund which is administered through the Native Hawaiian Development Office.



I. KA PO'E THE PEOPLE

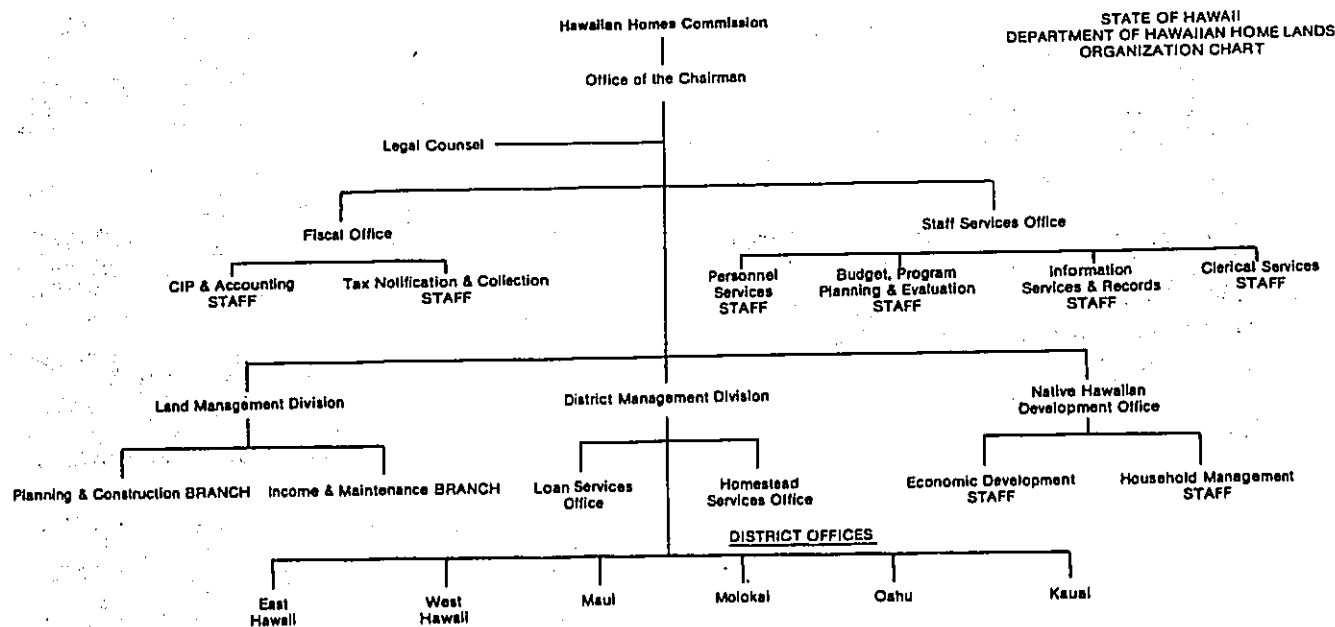


COMMISSIONERS

Georgiana K. Padeken, Chairman (1982)*
 Jubilee Moikeha, Vice-Chairman, Maui (1982)*
 Eleanor Ahuna, Hawaii (1983)*
 Barbara Hanchett, Molokai (1984)*
 Melvin Kalahiki, Oahu (1983)*
 Hazel Kauahikaua, Oahu (1982)*
 Christobel Kealoha, Oahu (1981)*
 Stanley Yadao, Kauai (1984)*
 *Expiration of Term

DEPARTMENT FORMAL ORGANIZATION STRUCTURE

Under the direction of the Chairman, the Department carries out provisions of the Hawaiian Homes Commission Act of 1920, as amended, and is guided by policies established by the Commission. The staff is comprised of 64.5 permanent positions authorized to serve the Department.



Hawaiian Homes Commission — Formulates policy, exercises control over functions of the Department mandated by the HHCA of 1920, as amended.

Office of the Chairman — Administers, plans, directs, and coordinates Department activities and programs within the scope of laws, policies, and regulations as delegated by the Commission. Represents the Department before the Legislature.

Legal Counsel — Provides legal counsel and services related to Hawaiian Homes Commission administered programs.

Fiscal Office — Administers, directs, coordinates, and controls the Department's fiscal and tax notification, capital improvements, and accounting programs. Maintains financial and physical inventory records.

Staff Services Office — Provides staff support for the Commission and the Office of the Chairman in long range policy planning, budgetary plans and program evaluations, information dissemination and personnel management areas.

Land Management Division — Provides research, planning support, land development, design, and construction, income land management, conservation, and land maintenance services. Administers Department's construction program. Recommends land usage, develops and disposes of lands for approved public and private purposes.

District Management Division — Supervises and coordinates the work of the Department's district managers and the homestead and loan services programs of the district offices.

Native Hawaiian Development Office — Administers the Native Hawaiian Rehabilitation Fund with a focus on economic development.

RESIDENTIAL PROGRAM SUMMARY RESIDENTIAL HOMESTEAD LEASES BY ISLAND

As of June 30, 1982

HAWAII	
Kawaihae	7
Keaukaha	338
Waiakea	142
Waimea	107
TOTAL	594
KAUAI	
Anahola	137
Kekaha	50
TOTAL	187
MAUI	
Paukukalo	89
MOLOKAI	
Hoolehua	40
Kalamaula	5
Kapaakea	45
O'ne Alii	27
TOTAL	117
OAHU	
Nanakuli	660
Papakolea/Kewalo	320
Waianae	153
Waimanalo	514
TOTAL	1,647
STATEWIDE TOTAL	2,634

Residential Program Highlights

- Awarding of 230 new residential awards in Nanakuli and Waianae, Oahu, is currently in its final phase of construction of new residences to complete a \$16 million project.
- Construction of site improvements in Paukukalo, Maui, which will result in 49 new residential awards in mid-1983.
- Construction of site improvements in Keaukaha, Hawaii, which will result in 32 new residential awards at the end of 1983.
- Appropriations of \$6 million from the Legislature, 1982, for development costs and loan funds which will further upgrade the Molokai Water System and provide funds for replacement and new residential construction loans.
- Award of 33 new residential awards in Keaukaha, Hawaii.
- Award of loans for 24 replacement homes throughout the State.
- Development Plans
Development plans for Kula, Maui, Kalamaula, Molokai, and Puukapu and Kawaihae, Hawaii, which incorporate agricultural and pastoral homesteads uses are being conducted based on community input. These plans will determine future use of our homestead areas for pasture and farm lots.

RESIDENTIAL APPLICATIONS WAITING LIST BY ISLAND

As of June 30, 1982

HAWAII	1,211
KAUAI	417
MAUI	504
MOLOKAI	297
OAHU	4,106
STATEWIDE TOTAL	6,535

To provide residential lots involves overcoming major financial constraints. Site improvements cost approximately \$35,000 per lot. Costs for constructing homes on these lots is approximately \$40,000 per house, or an aggregate cost of \$75,000 per residential lot. If this aggregate cost is used in estimating the total funding required to provide 6,535 residential homesteads for applicants on waiting lists throughout the State, the Department needs nearly \$500 million at today's costs just to satisfy the Department's residential applicants.

The Department is committed to overcoming these obstacles. The coming years offer a challenge for imaginative and creative breakthroughs in fulfilling the purposes of the Hawaiian Home Lands program.

AGRICULTURAL PROGRAM SUMMARY

AGRICULTURAL HOMESTEAD LEASE BY ISLAND

As of June 30, 1982

HAWAII			
	Farm	Ranch	Total
Panaewa	88	0	88
Waimea	28	59	87
TOTAL	116	59	175
KAUAI			
Anahola	1	0	1
Kekaha	0	2	2
TOTAL	1	2	3
MOLOKAI			
Hoolehua	201	5	206
Kalamaula	54	1	55
Kamiloloa	0	2	2
TOTAL	255	8	263
OAHU			
Lualualei	1	0	1
Waimanalo	1	0	1
TOTAL	2	0	2
STATEWIDE TOTALS			
	374	69	443

Agricultural Program Highlights

- **Panaewa Agricultural Awards**
Farm lot site improvements in excess of \$2 million were expended to provide 43 new homestead farm lots on 394 acres. Farm loan applications to develop the land totalling \$750,000 are being processed by the Department.
- **Agriculture Technical Assistance Program**
The Department has contracted with the University of Hawaii College of Tropical Agriculture Cooperative Extension Service to provide technical assistance in agriculture to new and existing farmers on Hawaii and Molokai. The extension agents, through funding from the Native Hawaiian Development Office, provide both classroom and "hands-on" one-to-one technical assistance to native Hawaiian farmers. This program has reached approximately 100 farmers and will continue through June, 1984.
- **Financial Assistance**
During Fiscal Year 1981-82, the Department granted over \$500,000 in low interest farm loans to 24 farmers and ranchers. These funds were utilized for capital improvements, operational expenses, and other development costs.
- **Maui Community College on Molokai**
The Department assisted in the establishment of an agricultural school in Hoolehua, Molokai, under the jurisdiction of Maui Community College. This school will provide both classroom and field training for homestead applicants and the upgrading of farm skills for experienced homestead farmers.
- **Administrative Rules**
The Department's Administrative Rules are constantly under review with respect to expanding opportunities for homesteaders engaged in farming and ranching. As an example, a new rule now allows farmers and ranchers to construct a home on their farm or ranch lots. New rules currently under investigation include allowing commercially confined animal production on agricultural lots and allowing workers' quarters on farm and ranch lots.
- **Agricultural Production**
Based on farm and ranch inspections, acreage under cultivation and pasture development have increased in the past year. The Department is aware that developing farms require both technical and financial assistance and commitment by the lessee. The Department concentrated its limited staff resources on the island of Hawaii. In Panaewa and Waimea expansion in cultivation through joint participation of existing homesteaders has been experienced. The Department and the Cooperative Extension Service now have two-thirds of the total agriculture acreage in these farming communities under cultivation.

AGRICULTURAL LEASE APPLICATIONS AGRICULTURAL APPLICATIONS WAITING LIST BY ISLAND

As of June 30, 1982

	Farm	Ranch
HAWAII	424	265
KAUAI	87	39
MAUI	26	15
MOLOKAI	121	29
OAHU	7	—
STATEWIDE TOTAL	665	348

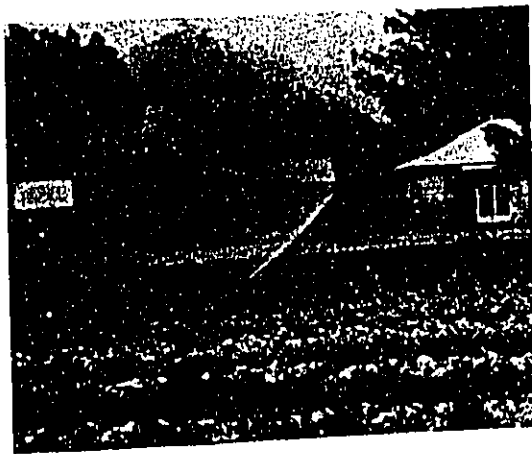
Agricultural Waiting Lists Continue To Grow

The Department is committed to placing Native Hawaiians on the land. However, as with residential lots, providing farm lots and loan assistance involves major financial requirements. For example, a 10 acre farm lot requires \$35,000 for site and infrastructure improvements. The Department is also authorized to grant farm and ranch loans up to

\$50,000. Furthermore, because construction of homes on farm and ranch lots is now allowed, an additional \$40,000 may be required. Therefore, per farm or ranch lot, up to \$125,000 is needed. In total, approximately \$127 million is required to place the 1013 farm and ranch applicants on the land.

The following programs are planned for the coming year:

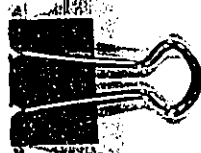
- **Anahola Farm Lots**
34 agricultural lots ranging in size from six to more than 20 acres will be awarded in 1983. Site improvements are being constructed which include paved roadways, water lines and electrical systems.
- **Hoolehua Farm Lots**
The Department is now in the process of evaluating its vacant parcels in Hoolehua, Molokai, for agricultural awards in terms of access, water, parcel size and agricultural feasibility. The screening of applicants on the waiting list will be initiated by the end of 1982.
- **Farm Loan Funds**
Budgeting for farm loan funds for Biennium 1983-1985 is being formulated in anticipation of new farm awards and increased agricultural production by existing lessees.



II.



KA
'AINA
THE
LAND



LAND MANAGEMENT DIVISION

Land "... under the control of the Department to be used and disposed of in accordance with the provisions of this title."

Approximately 191,000 acres are managed by the Department. The Land Division includes two branches: 1) Planning and Construction; 2) Income and Maintenance.

Planning and construction goals encompass the development of the lands and placing people in new residential, agricultural, aquacultural and pastoral subdivisions and upgrading of existing areas. Specific functions include the Department of Hawaiian Home Lands General Plan, development plans, detailed designs and construction plans and the construction of site improvements and homes. (See appendix for detailed project outlines: CIP Projects, Development Fund Projects, Housing Program and Home Repairs).

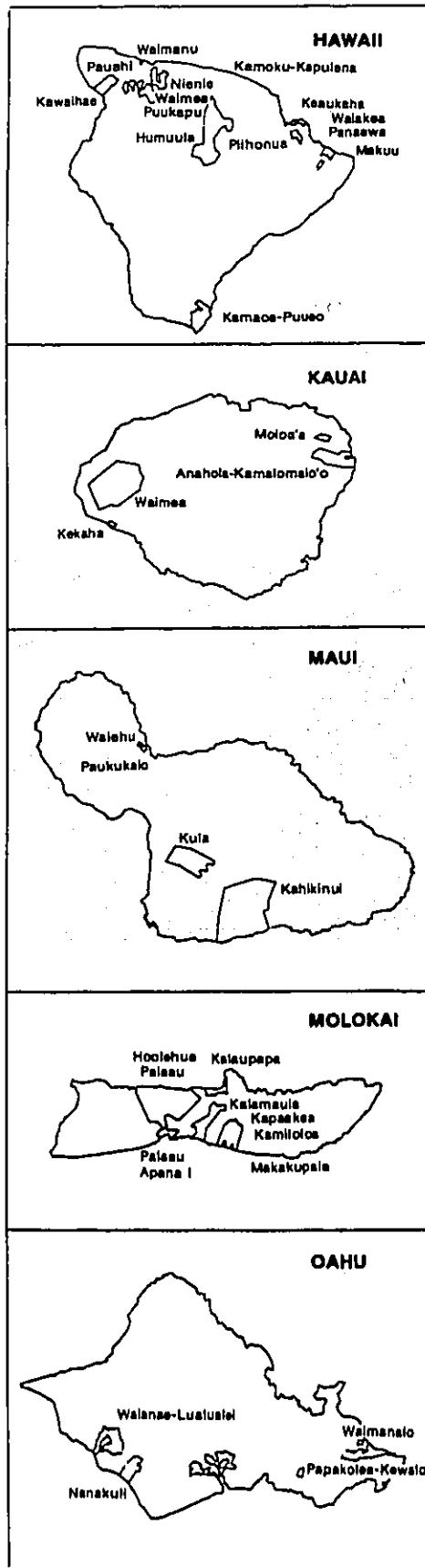
The income and maintenance goal is to maximize income through effective land management. The objective is to use a small percentage of Hawaiian Home Lands to generate income for operating and administrative expenses. (See appendix for detailed lease, license, and permit summaries.)

LAND ACREAGE SUMMARY By Island

Island	Land Acreage
Hawaii	110,550
Kauai	18,670
Maui	29,005
Molokai	26,199
Oahu	7,116
State Total	*191,540

NOTE: Figures appearing throughout this section are subject to change pending the Federal State Task Force on the Hawaiian Homes Commission Act findings. Also, most figures have been rounded off to the nearest acre and dollar for reader convenience.

* Variances in acreage has resulted from refinement in data tabulation for the islands of Hawaii, Kauai and Molokai. For the island of Oahu, the increase in acreage is attributed to the inclusion of two Executive Orders encompassing Hawaiian Home lands at Lualualei.



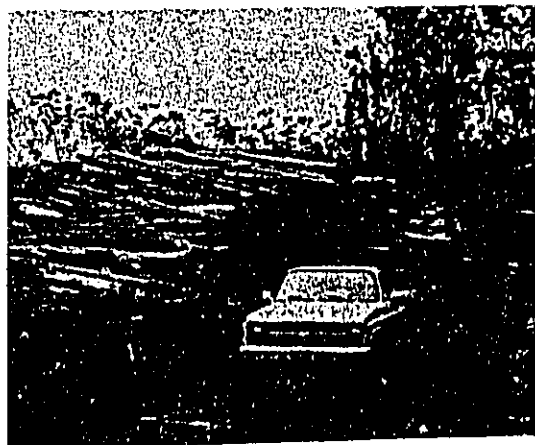
Land inventory and land use records are constantly audited, evaluated, up-dated and monitored for proper administration.

Revenues are primarily derived from General Leases, Licenses, Revocable Permits, and Rights of Entry.

For general understanding, the following definitions are offered:

Instrument	Abbreviation	Definition
Governor's Executive Order	GEO	The setting aside of public land to any department or agency of the State, city, county or other political subdivision of the State, for a public use or purpose by the Governor.
Conservation Lands	—	Lands that are necessary for protecting water sources and water supplies; utilized for National or State Parks and for scenic and historical sites. Conservation Lands also include those lands that may not normally be adaptable or presently needed for urban, rural or agricultural use*.
General Lease	GL	Lease issued under provisions of Chapter 171, HRS, granting right to possess and use Hawaiian home lands for a term of years.
License	—	A revocable right to enter on Hawaiian Home Lands for a period not to exceed 21 years and for specific purpose or purposes of which right is not assignable. Includes church licenses.
Revocable Permit	RP	Authorizes temporary occupancy of Hawaiian Home Lands on month-to-month basis.
Right of Entry	RE	Authorizes short-term interim use of Hawaiian Home Lands for specific purposes.
DHHL Lands Administered by DLNR	DLNR	Lands returned to the control of DLNR pursuant to Sections 204(2) and 212, HHCA. Such lands, until recalled by DHHL, will continue to be administered by DLNR.

*Paraphrased from the Land Use Commission booklet "Rules of Practice and Procedure".



LAND USE SUMMARIES

As of June 30, 1982

USE	Homestead Use*				GENERAL LEASE	LICENSES	OTHERS**	TOTAL ACREAGE
	HOMES	FARMS	RANCHES	COMMUNITY PASTURES				
Acreage	1,138	7,619	17,305	13,706	75,623	1,118	75,031	191,540

* 192 acres has shifted from homes to ranches to accurately reflect its pastoral designation.

** This category represents acreage under the Governor's Executive Orders, Unencumbered Lands, Conservation Lands, Revocable Permits, Right-of-Entries, and DLNR administered leases on DHHL land.

NOTE: Presently, it is the opinion of the Attorney General that Executive Orders on Hawaiian Home Lands are invalid, necessitating further review.

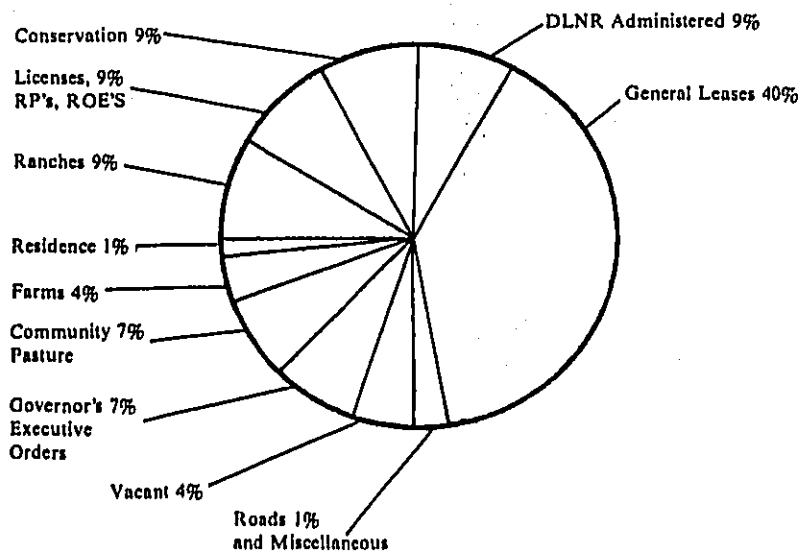
LAND USE SUMMARY

By Island

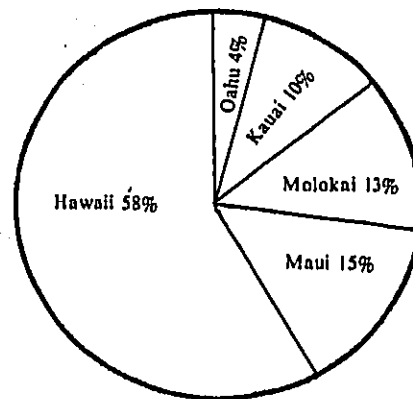
ACREAGE USE	HAWAII	KAUAI	MAUI	MOLOKAI	OAHU	TOTAL ACREAGE
Homestead	17,504	546	17	7,576	419	26,062
General Lease	50,658	316	21,680	693	2,276	75,623
Community Pasture	550	—	—	13,156	—	13,706
Licenses	16	11	7	984	100	1,118
Others	41,822	17,797	7,301	3,790	4,321	75,031
Totals	110,550	18,670	29,005	26,199	7,116	191,540

NOTE: See appendix for more detailed breakdown.

HAWAIIAN HOME LANDS USE



DISTRIBUTION OF HAWAIIAN HOME LANDS BY ISLAND



REVENUE PRODUCING LAND SUMMARIES

As of June 30, 1982

	Hawaii	Kauai	Maui	Molokai	Oahu	Total
Acreage	66,294	16,758	21,878	1,781	2,430	109,141
Income	\$1,357,744	\$93,691	\$53,627	\$40,597	\$74,848	\$1,620,507

INCOME BY USE SUMMARY

As of June 30, 1982

USE	HAWAII	KAUAI	MAUI	MOLOKAI	OAHU	TOTAL \$ PER USE
Industrial Leases	837,396					837,396
Commercial Leases	179,800					179,800
Pasture/Agri Leases	235,174	3,500	52,450	10,210	25,911	327,245
*Other Leases	15,746		300	18,240	13,882	48,168
DLNR Leases/RP's	381	74,251			6,059	80,691
Revocable Permits	84,355	14,755	874	1,445	24,582	126,011
Right of Entries	750			400		1,150
Licenses	4,142	1,185	3	10,302	4,414	20,046
Total Income By Island	\$1,357,744	\$93,691	\$53,627	\$40,597	\$74,848	\$1,620,507

Total DHHL
Lease Revenue
\$1,392,609

*Includes Leases for Utilities, Public Service and Government Purposes

III.



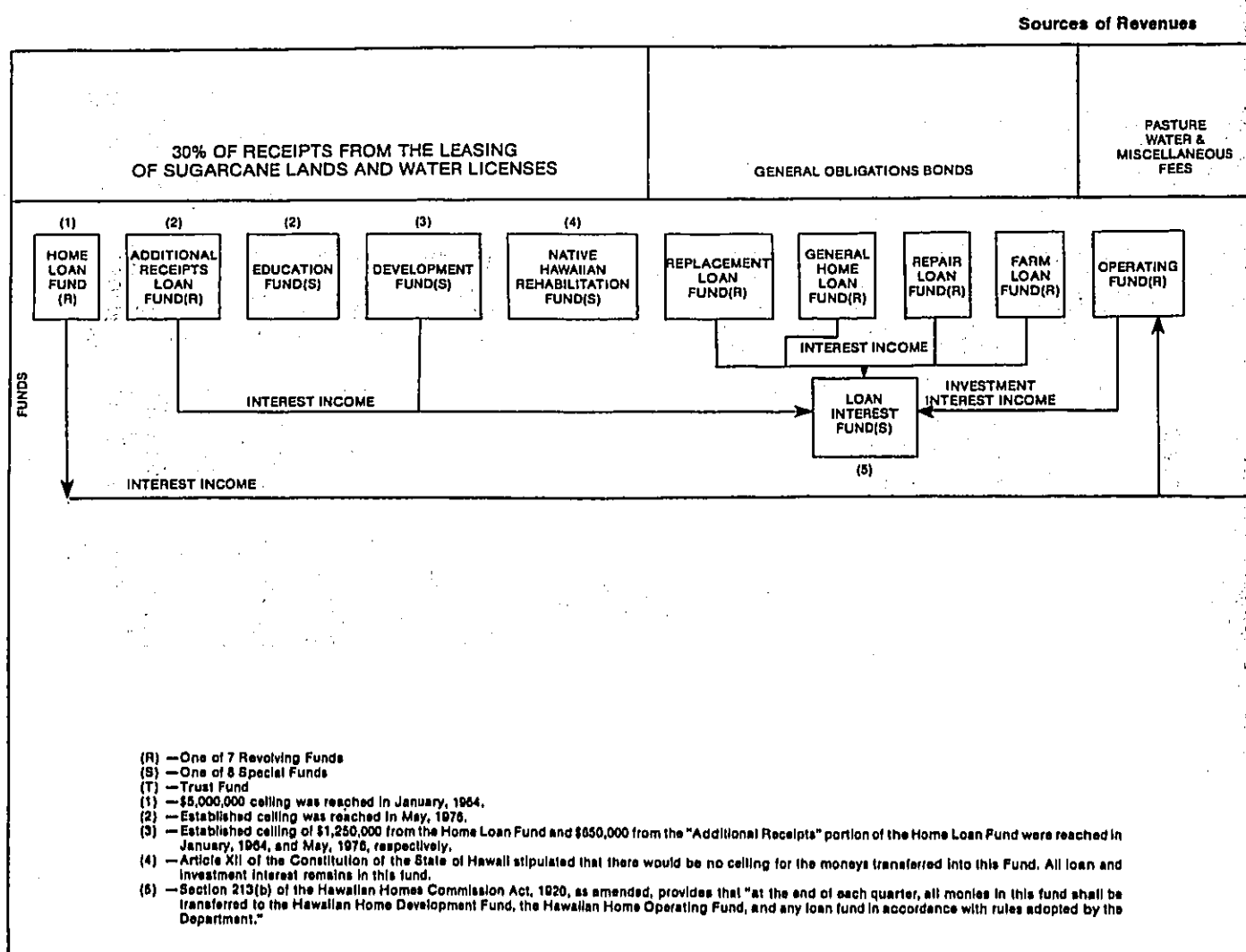
**KE
KALA
THE
MONEY**

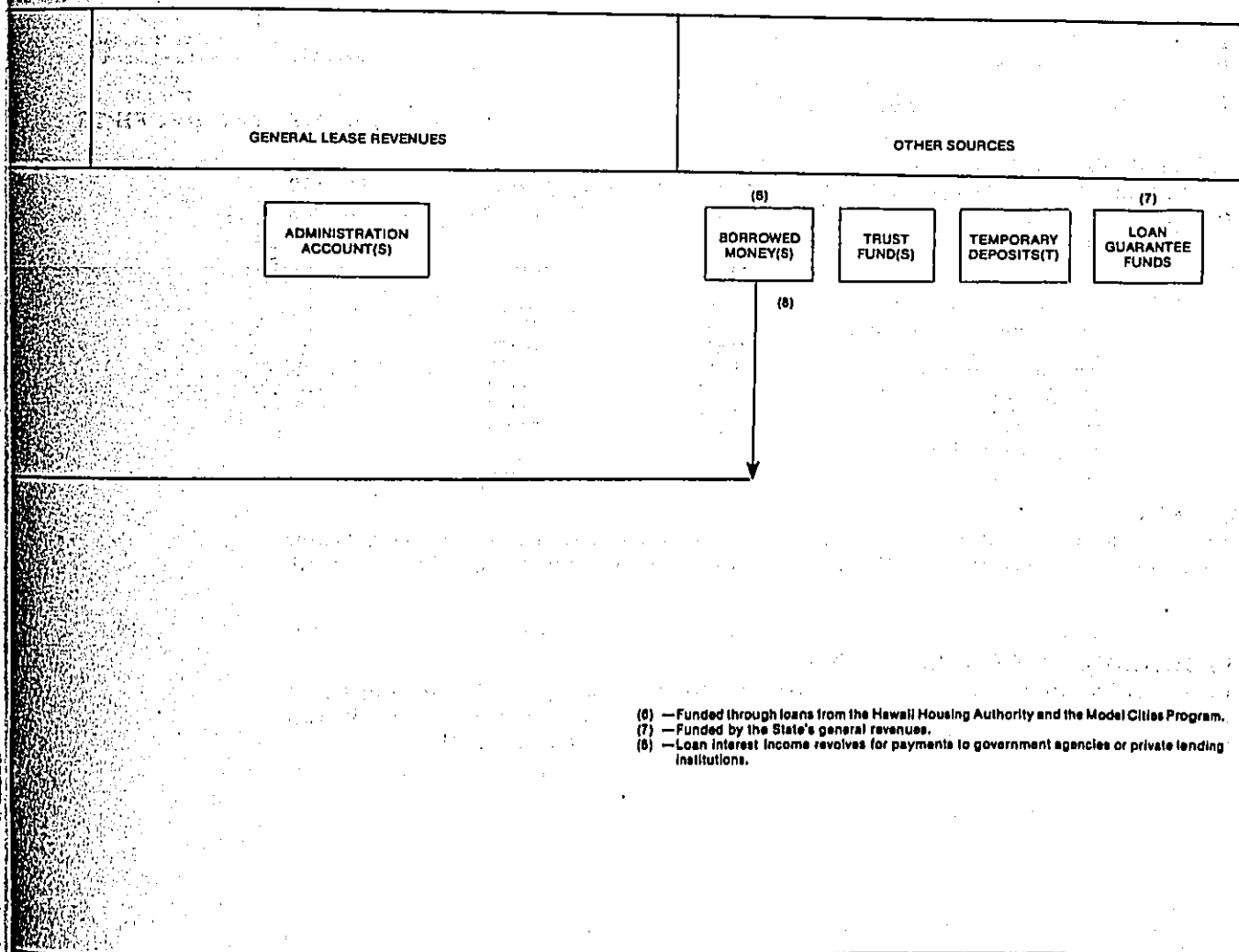
FISCAL OFFICE

The fiscal office staff is charged with the responsibility of accounting for the financial transactions relating to the Department's lease, loan, construction and administrative programs. These transactions are generally accounted for in eight special funds, seven revolving funds, a trust fund, and approximately 50 bond fund accounts.

SOURCES OF FUNDS

Section 213 of the Hawaiian Homes Commission Act, 1920, as amended, established seven revolving funds and eight special funds in the State treasury. These funds and the sources of their revenues are depicted below:





- (6) — Funded through loans from the Hawaii Housing Authority and the Model Cities Program.
- (7) — Funded by the State's general revenues.
- (8) — Loan interest income revolves for payments to government agencies or private lending institutions.

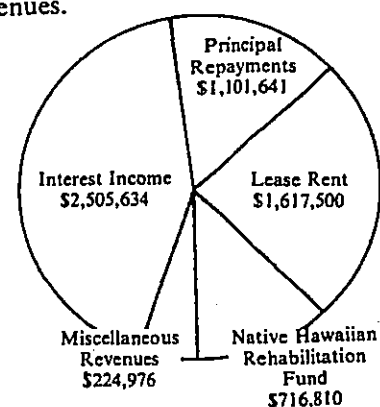
INCOME SUMMARY

Departmental receipts are derived from five primary sources: interest income, lease rent, principal repayments, receipts from sugar cane land leases and water licenses specifically earmarked for the Native Hawaiian Rehabilitation Fund, and miscellaneous revenues.

INTEREST INCOME

Interest income consists of all interest received from the borrowers of each loan fund, together with the interest received from the investment of available cash. The following is a breakdown of interest received during the fiscal years ended June 30, 1982 and 1981:

	1982	1981
Various loan funds	\$1,521,535	\$1,403,508
Borrowed money fund	378,396	400,881
Investments in time certificates of deposit	522,866	740,260
Home loan fund	82,837	79,792
	<u>\$2,505,634</u>	<u>\$2,624,441</u>



DEPARTMENTAL RECEIPTS

PRINCIPAL REPAYMENTS

That portion of each loan payment which represents principal repayment is deposited into the loan fund from which the loan was initially made. Principal repayments received during the fiscal years ended June 30, 1982 and 1981 are as follows:

	1982	1981
Home Loan Fund	\$ 286,159	\$ 316,006
Additional Receipts Loan Fund	52,934	31,505
Farm Loan Fund	44,532	49,625
Borrowed Money Fund	270,886	277,022
Special Repair Loan Fund	96,475	106,899
Home Replacement Loan Fund	148,172	135,674
General Home Loan Fund	151,654	222,359
Loan Guarantee Fund	50,829	-0-
	<u>\$1,101,641</u>	<u>\$1,139,090</u>

LEASE RENT

Lease rentals consist of all revenues generated from the general leasing of the "available lands" defined in Section 204 of the Hawaiian Homes Commission Act of 1920 as amended.

	1982	1981
Lease rentals	\$1,617,500	\$1,418,803

NATIVE HAWAIIAN REHABILITATION FUND

Income is derived from 30% of the State receipts "from the leasing of cultivated sugar cane lands under any provision of law or from water licenses . . ." The following is a breakdown of the revenues received for the fiscal years ended June 30, 1982 and 1981:

	1982	1981
Sugar cane land leases	\$643,711	\$ 926,679
Water licenses	73,099	89,237
	<u>\$716,810</u>	<u>\$1,015,916</u>

MISCELLANEOUS REVENUES

The miscellaneous revenues consist primarily of income derived from the sale of rock and sand, pasture fees, and water charges to various lessees and non-lessees on the island of Molokai. The following is a breakdown of the miscellaneous income received during the fiscal years ended June 30, 1982 and 1981:

	1982	1981
Rock and sand sales	\$162,146	\$162,728
Pasture, water and miscellaneous fees	62,830	68,945
	<u>\$224,976</u>	<u>\$231,673</u>

HAWAIIAN HOME DEVELOPMENT FUND

The Hawaiian Home Development Fund is one of eight special funds established by Section 213(b) of the Hawaiian Homes Commission Act, 1920, as amended. The sources of revenue for this fund are as follows:

- 1) 25% of the \$5,000,000 deposited into the Hawaiian Home Loan Fund;
- 2) 13% of the \$5,000,000 "Additional Receipts" which were deposited into the Hawaiian Home Loan Fund;
- 3) Quarterly transfers from the Hawaiian Home Loan Interest Fund;
- 4) Administrative Account revenues which exceed budgeted expenditures approved by the Legislature.

The moneys transferred to this Fund are available, with the prior written approval of the Governor, for the purposes specified in Section 213(b) of the Act.

Balance Sheet June 30, 1982 and 1981

Assets	1982	1981
Cash:		
In State Treasury:		
Available Cash	\$ 246,851	\$ 851,781
Encumbered Cash	<4,741>	580,455
Total Cash in State Treasury	242,110	1,432,236
Time Certificates of Deposit	900,000	—
Total Cash	<u>1,142,110</u>	<u>1,432,236</u>
Other Assets:		
Construction in Progress	1,817,743	1,567,966
Land Improvements	193,944	193,944
Total Other Assets	<u>2,011,687</u>	<u>1,761,910</u>
Total Assets	<u>\$3,153,797</u>	<u>\$3,194,146</u>
Liabilities and Fund Balance		
Accounts Payable	\$ 6,819	\$ 64,928
Fund Balance	<u>3,146,978</u>	<u>3,129,218</u>
Total Liabilities and Fund Balances	<u>\$3,153,797</u>	<u>\$3,194,146</u>

Statement of Cash Receipts and Disbursements For the Fiscal Years Ended June 30, 1982 and 1981

	1982	1981
Cash in State Treasury, July 1, 1981 and 1980	\$1,432,236	\$1,168,501
Receipts:		
Redemption of Time Certificates of Deposit	1,850,000	4,600,000
Transfer from the Loan Interest Fund	200,000	1,362,739
Refunds of Prior Year's Expenditure	3,450	—
Total Receipts	<u>\$2,053,450</u>	<u>5,962,739</u>
Total Cash Available	3,485,686	7,131,240
Disbursements:		
Investments in Time Certificates of Deposit	2,750,000	4,600,000
Operating Expenses	218,499	251,073
Additions to Construction in Progress	259,105	847,931
Payment of Prior Year's Encumbrance	15,972	—
Total Disbursements	<u>3,243,576</u>	<u>5,669,004</u>
Cash in State Treasury, June 30, 1982 and 1981	<u>\$ 242,110</u>	<u>\$1,432,236</u>

HAWAIIAN HOME OPERATING FUND

The Hawaiian Home Operating Fund is one of seven revolving funds established by Section 213(b) of the Hawaiian Homes Commission Act, as amended. The revenue sources for this fund include the following:

- 1) All fees received by the Department from any source, except moneys received by the Hawaiian Home Administration Account;
 - 2) Interest income derived from loans made from the Hawaiian Home Loan Fund;
 - 3) Quarterly transfers made from the Hawaiian Home Loan Interest Fund.
- The Operating Fund was created in June of 1948 for the purposes specified in Section 213(a) of the Act.

Balance Sheet June 30, 1982 and 1981

Assets	1982	1981
Cash:		
Cash in State Treasury	\$ 6,428	\$ 252,686
Time Certificates of Deposit	<u>100,000</u>	<u>—</u>
Total Cash	<u>106,428</u>	<u>252,686</u>
Accounts Receivable	110,471	113,076
Due from the Administration Account	16,330	16,330
Due from the Trust Fund	2,100	2,100
Accrued Interest Receivable	6,225	—
Other Assets:		
Construction in Progress	239,083	248,411
Advances for Public Utilities	16,370	16,370
Reimbursable Expenses	<u>13,806</u>	<u>13,782</u>
Total Other Assets	<u>269,259</u>	<u>278,563</u>
Total Assets	<u>\$ 510,813</u>	<u>\$ 662,755</u>
Liabilities and Fund Balance		
Accounts Payable	2,923	—
Fund Balance	<u>507,890</u>	<u>662,755</u>
Total Liabilities and Fund Balance	<u>\$ 510,813</u>	<u>\$ 662,755</u>

Statement of Cash Receipts and Disbursements For the Fiscal Years Ended June 30, 1982 and 1981

	1982	1981
Cash in State Treasury, July 1, 1981 and 1980	\$ 252,686	\$ 102,725
Receipts:		
Redemption of Time Certificates of Deposit	—	1,482,000
Interest Income	86,668	142,644
Miscellaneous Revenues	<u>62,830</u>	<u>68,607</u>
Total Receipts	<u>149,493</u>	<u>1,693,251</u>
Total Cash Available	402,184	1,795,976
Disbursements:		
Investments in Time Certificates of Deposit	100,000	1,191,000
Transfer to the Administrative and Operating Program Accounts	200,000	214,102
Operating Expenses	95,756	138,188
Total Disbursements	<u>395,756</u>	<u>1,543,290</u>
Cash in State Treasury, June 30, 1982 and 1981	<u>\$ 6,428</u>	<u>\$ 252,686</u>

NATIVE HAWAIIAN REHABILITATION FUND

The Native Hawaiian Rehabilitation Fund was established by Article XII, Section 1, of the 1978 State Constitution "to include but not be limited to, the educational, economic, political, social, and cultural processes by which the general welfare and condition of native Hawaiians are thereby improved."

The revenues for this fund are derived from 30% of the State receipts "from the leasing of cultivated sugarcane lands under any provision of law or from water licenses"

Balance Sheet June 30, 1982 and 1981

Assets	1982	1981
Cash:		
Cash in State Treasury		
Available	\$1,857,742	\$ 786,521
Encumbered	14,754	1,111
Total Cash in State Treasury	1,872,496	787,632
Time Certificates of Deposit	600,000	1,001,000
Total Cash	2,472,496	1,788,632
Loans Receivable	19,406	—
Accrued Interest Receivable	5,256	—
Total Assets	<u>\$2,497,158</u>	<u>\$1,788,632</u>
 Liabilities and Fund Balance		
Accounts Payable	\$ 6,061	\$ 1,111
Fund Balance	2,491,097	1,787,521
Total Liabilities and Fund Balance	<u>\$2,497,158</u>	<u>\$1,788,632</u>

Statement of Cash Receipts and Disbursements For the Fiscal Years Ended June 30, 1982 and 1981

	1982	1981
Cash in State Treasury, July 1, 1981 and 1980	787,632	\$ 2,718
Receipts:		
Revenue from sugarcane land leases and water licenses — Department of Land and Natural Resources	716,810	1,015,916
Interest Income on Investments in Time Certificates of Deposit	135,250	—
Redemption of Time Certificates of Deposit	5,331,000	4,438,000
Total Receipts	6,183,060	5,453,916
Total Cash Available	6,970,692	5,456,634
Disbursements:		
Investments in Time Certificates of Deposit	4,930,000	4,544,000
Operating Expenses	147,890	125,002
Loans Awarded	19,406	—
Disbursements of Prior Year's Encumbrances	900	—
Total Disbursements	5,098,196	4,669,002
Cash in State Treasury, June 30, 1982 and 1981	<u>\$1,872,496</u>	<u>\$ 787,632</u>

HAWAIIAN HOME LOAN INTEREST FUND

The Hawaiian Loan Interest Fund was created in 1979 to function as a repository for all interest moneys from loans or investments received by the Department from any fund except the Borrowed Money Fund and the Hawaiian Home Loan Fund, the Native Hawaiian Rehabilitation Fund and the Administration Account.

According to the provisions of Section 213(b) of the Hawaiian Homes Commission Act, 1920, as amended, and Title 10, Administrative Rules, Department of Hawaiian Home Lands §10-3-52 at the end of each quarter, all moneys in the fund shall be transferred as follows:

- 1) In accordance with a plan for transfer approved by the Hawaiian Homes Commission; or
- 2) If the Commission fails to approve a plan for transfer, as follows:
 - 5% to the Development Fund
 - 4% to the Operating Fund
 - 1% to the Farm Loan Fund
 - 1% to the Repair Loan Fund
 - 12% to the Replacement Loan Fund
 - 77% to the General Loan Fund

Balance Sheet June 30, 1982 and 1981

Assets	1982	1981
Cash:		
Cash in State Treasury	\$ 336,365	\$ —
Time Certificates of Deposit	<u>120,000</u>	<u>—</u>
Total Cash	456,365	—
Accounts Receivable	316,904	243,990
Accrued Interest Receivable	89,237	
Due from Home Loan Fund	<u>6,634</u>	<u>—</u>
Total Assets	<u>\$ 869,140</u>	<u>\$ 243,990</u>
Fund Balance	<u>\$ 869,140</u>	<u>\$ 243,990</u>

Statement of Cash Receipts and Disbursements For the Fiscal Years Ended June 30, 1982 and 1981

	1982	1981
Cash in State Treasury, July 1, 1981 and 1980	\$ —	\$ 410,431
Receipts:		
Interest income on loans receivable	1,517,751	1,408,839
Interest income on investments in		
Time Certificates of Deposit	369,042	661,866
Redemption of Time Certificate of Deposit	<u>1,030,000</u>	<u>1,707,900</u>
Total Receipts	<u>2,916,793</u>	<u>3,778,605</u>
Total Cash Available	<u>2,916,793</u>	<u>4,189,036</u>
Disbursements:		
Transfer to the Development Fund	200,000	1,362,739
Transfers to the Replacement Loan Fund	—	270,000
Transfer to the General Loan Fund	1,230,428	977,297
Investments in Time Certificates of Deposit	<u>1,150,000</u>	<u>1,579,000</u>
Total Disbursements	<u>2,580,428</u>	<u>4,189,036</u>
Cash in State Treasury, June 30, 1982 and 1981	<u>\$ 336,365</u>	<u>\$ —</u>

HAWAIIAN HOME ADMINISTRATION ACCOUNT

The Administration Account provides for the administrative needs of the Department as they are reflected in the operating budget approved by the Legislature. The revenues deposited into this fund are derived from the leasing of "available lands" defined in Section 204 of the Hawaiian Homes Commission Act, 1920, as amended. Any amount in this fund which is in excess of the amount approved by the Legislature or made available for the fiscal period may be transferred to the Development Fund.

The moneys deposited into the Administration Account are used to fund the following departmental administrative and operating programs:

HHL 602 — Planning, Development and Management of Hawaiian Home Lands

HHL 625 — General Support for Native Hawaiians

Balance Sheet June 30, 1982 and 1981

Assets	1982	1981
Cash:		
Cash in State Treasury	\$ 310,589	\$ 542,950
Time Certificates of Deposit	140,000	—
Total Cash	450,589	542,950
Accounts Receivable	3,491,127	3,214,614
Accrued Interest Receivable	385	—
Total Assets	<u>\$3,942,101</u>	<u>\$3,757,564</u>
Liabilities and Fund Balance:		
Due to Operating Fund	\$ 16,330	\$ 16,330
Fund Balance	3,925,771	3,741,234
Total Liabilities and Fund Balance	<u>\$3,942,101</u>	<u>\$3,757,564</u>

Statement of Cash Receipts and Disbursements For the Fiscal Years Ended June 30, 1982 and 1981

	1982	1981
Cash in State Treasury, July 1, 1981 and 1980	\$ 542,950	\$ 148,658
Receipts:		
Revenue from rents, licenses and leases:		
Department of Hawaiian Home Lands	1,478,352	1,173,481
Department of Land and Natural Resources	139,149	244,872
Total Revenue from rents, licenses and leases	1,617,501	1,418,353
Redemption of Time Certificates of Deposit	913,000	818,000
Rock Sales	162,146	162,728
Reversions from the Administrative and Operating Program Accounts	144,465	140,819
Interest Income	14,744	15,487
Refund of Prior Year Expenditures	556	—
Total Receipts	<u>2,852,411</u>	<u>2,555,387</u>
Total Cash Available	<u>3,395,362</u>	<u>2,704,045</u>
Disbursements:		
Transfers to the Administrative and Operating Accounts	2,031,773	1,343,095
Investments in Time Certificates of Deposit	1,053,000	818,000
Total Disbursements	<u>3,084,773</u>	<u>2,161,095</u>
Cash in State Treasury, June 30, 1982 and 1981	<u>\$ 310,589</u>	<u>\$ 542,950</u>

ADMINISTRATIVE AND OPERATING PROGRAM ACCOUNTS

Statement of Cash Receipts and Disbursements
For the Fiscal Years Ended June 30, 1982 and 1981

	1982	1981
Cash in State Treasury, July 1, 1981 and 1980	\$ 60,860	\$ 140,819
Receipts:		
Transfers from:		
Administration Account	2,031,773	1,343,095
Operating Fund	<u>200,000</u>	<u>214,102</u>
Total Transfers	\$2,231,773	\$1,557,197
Prior years:		
Expenditure Reimbursements	2,463	31,444
Encumbrance Reversions	3,124	2,415
Cancelled Warrant	<u>112</u>	<u>40</u>
Total Receipts	<u>\$2,237,472</u>	<u>\$1,591,096</u>
Total Cash Available	<u>\$2,298,332</u>	<u>\$1,731,915</u>
Disbursements:		
Net administrative and operating program costs (see page 25)	\$2,078,461	\$1,530,236
Reversions to Administration Account	144,465	140,819
Total Disbursements	<u>\$2,222,926</u>	<u>\$1,671,055</u>
Cash in State Treasury, June 30, 1982 and 1981	<u>\$ 75,406</u>	<u>\$ 60,860</u>

**SCHEDULE OF ADMINISTRATIVE AND OPERATING COSTS
FOR THE FISCAL YEARS ENDED JUNE 30, 1982 AND 1981**

	1982				1981			
	Allotted	Expenditures	Encumbrances	Total	Allotted	Expenditures	Encumbrances	Total
Personal Services	\$1,313,969	\$1,303,028	\$ 4,780	\$1,307,808	\$ 970,165	\$ 930,339	\$ 6,510	\$ 936,849
Fringe Benefits	277,189	253,097	—	253,097	205,679	182,682	—	182,682
Total Personal Services	1,591,158	1,556,125	\$ 4,780	1,560,905	1,175,844	1,113,021	6,510	1,119,531
Other Personal Services	41,970	13,605	263	13,868	47,254	46,268	2,441	48,709
Materials and Supplies	66,271	57,808	3,675	61,483	48,388	51,120	3,567	54,687
Communications	55,857	49,379	—	49,379	39,218	41,379	—	41,379
Travel and Subsistence	63,943	45,370	1,677	47,047	34,747	41,038	759	41,797
Freight and Delivery	1,620	4,172	50	4,222	1,715	1,373	—	1,373
Printing, Advertising	21,146	13,482	1,401	14,883	52,260	19,533	1,389	20,922
Utilities	127,283	108,000	21	108,021	53,096	43,066	611	43,677
Rentals	3,484	22,653	75	22,728	53,367	38,367	—	38,367
Repair and Maintenance	17,987	23,837	906	24,743	14,333	23,232	1,791	25,023
Insurance and Bond	1,275	—	—	—	1,170	—	—	—
Benefit Payments	48,293	41,650	—	41,650	32,424	27,051	58	27,109
Special 5% Fund Assessment	103,544	119,540	—	119,540	64,000	—	56,000	56,000
Other Misc. Expenditures	36,731	9,063	929	9,992	27,259	10,869	793	11,662
Total Other Expenses	589,404	508,559	8,997	517,556	469,231	343,296	67,409	410,705
TOTAL	\$2,180,562	\$2,064,684	\$13,777	\$2,078,461	\$1,645,075	\$1,456,317	\$73,919	\$1,530,236

LOAN ACTIVITIES

The Hawaiian Homes Commission Act of 1920, as amended, authorizes the Department of Hawaiian Home Lands to make loans to native Hawaiians for purposes specifically enumerated in the Act. The following is a schedule of the Department's outstanding loans as of June 30, 1982:

	Total Loans Receivable	Total No. of Accounts	No. of Delinq. Accounts	% of Accounts Delinq.	Delinq. Amounts	% of Amount Delinq.
Hawaiian Home Loans	\$ 3,246,372	280	93	33.21%	\$ 98,276	3.03%
Additional Receipts Loans	373,347	29	7	24.14	9,606	2.57
Farm Loans	964,784	81	48	59.26	75,183	7.79
Borrowed Money Fund Loans	4,877,189	381	117	30.71	108,532	2.23
Repair Loans	510,057	122	18	14.75	12,756	2.50
Replacement Loans	6,138,097	269	83	30.86	37,835	.53
General Loans	11,962,535	517	254	49.13	109,659	.92
Native Hawaiian Rehabilitation Loans	23,272	2	—	—	—	—
	\$28,095,653	1,681	620	36.88%	\$446,847	1.59%

LEASING ACTIVITIES

Section 204(2) of the Hawaiian Homes Commission Act, 1920, as amended, authorizes the Department of Hawaiian Home Lands to lease to the public any "available lands" not required for leasing under Section 207(a) of the Act.

The revenues from these public leasing activities come from two sources:

1. General leases, revocable permits and water licenses administered by the Department of Land and Natural Resources; and
2. General leases, revocable permits, licenses, easements and rights-of-entry administered by the Department of Hawaiian Home Lands.

The moneys collected are deposited directly into the Department's Administration Account and used to meet the departmental administrative and operating needs.

GENERAL LEASES AND REVOCABLE PERMITS JUNE 30, 1982

	Beginning Acct. Recv. 7/01/81	Annual Billings	Cash Receipts	Ending Acct. Recv. 6/30/82	Delinquent Acct. Recv.
DLNR - General Leases	\$ 30,767	\$ 111,628	\$ 136,243	\$ 6,152	\$ 5,419
DLNR - Revocable Permits	3,437	7,930	9,449	1,918	988
DHHL - General Leases	57,196	4,610,674	1,226,805	3,441,065	9,842
DHHL - Revocable Permits	19,949	266,630	269,105	17,474	3,641
	\$111,349	\$4,996,862	\$1,641,602	\$3,466,609	\$19,890

GENERAL LEASES AND REVOCABLE PERMITS June 30, 1981

	Beginning Acct. Recv. 7/01/80	Annual Billings	Cash Receipts	Ending Acct. Recv. 6/30/81	Delinquent Acct. Recv.
DLNR - General Leases	\$ 10,743	\$ 256,989	\$ 236,965	\$ 30,767	\$20,212
DLNR - Revocable Permits	1,595	9,749	7,907	3,437	2,533
DHHL - General Leases	77,253	881,678	901,735	57,196	11,232
DHHL - Revocable Permits	16,851	330,322	327,224	19,949	3,641
	\$106,442	\$1,478,738	\$1,473,831	\$111,349	\$37,618

IV.



**PAPA
HANA
THE**

PROGRAMS

NATIVE HAWAIIAN DEVELOPMENT OFFICE

The Native Hawaiian Rehabilitation Fund (NHRF) was created by the 1978 State Constitutional Convention "to include but not be limited to, the educational, economic, political, social, and cultural processes by which the general welfare and condition of native Hawaiians are thereby improved." Revenues for NHRF are derived from thirty percent of State receipts "from the leasing of cultivated sugarcane lands under any provision of law or from water licenses. . ." These are not Hawaiian Home lands, but State lands administered by the Department of Land and Natural Resources (DLNR).

Because of the broad purposes for which NHRF could be used and the limited amount of funds available, the Hawaiian Homes Commission directed the Department to undertake planning work to provide the basis for focusing the fund. Based on statistical research, discussions with other agencies, and public input, the Department conducted detailed program development in 1980-1981. These programs were discussed at public meetings held throughout the State, and Draft proposals were revised. The Department's request to create the Native Hawaiian Development Office (NHDO) was approved in late 1981. Position descriptions were approved in early 1982. Thus, NHDO became an official division of the Department's formal organizational structure.

ECONOMIC DEVELOPMENT PROGRAM

The Hawaiian Homes Commission made a five-year pilot Economic Development Program commitment to provide services to assist native Hawaiians in starting or expanding small businesses. Services include:

- Business Assistance
Counselling and referral in a wide range of business development needs.
- Technical Assistance
Agricultural agents to provide individual technical assistance to farmers on Molokai and Hawaii.
- Education and Training
Scholarships to native Hawaiians pursuing a Master's degree in Business Administration. Small grants to native Hawaiians taking courses related to business development. Community workshops in various aspects of business development.
- Small Business Loans
Limited financing to businesses that are wholly-owned by native Hawaiians.

Status: Following approval of position descriptions, the Department advertised for two vacant positions in the Economic Development Program. A total of 84 individuals applied. The Department is currently evaluating applications prior to hiring staff. Rules are required for educational scholarships and small business loans.

Implementation: The Department implemented the Technical Assistance component through a contract with the University of Hawaii Agricultural Extension Service. Individual direct technical assistance was provided to 57 native Hawaiian farmers on Molokai and Hawaii in FY 1981-1982. Other services offered included workshops, variety trials, soil improvements, and disease control. The Hawaiian Homes Commission approved an extension of this contract to 1984.

The Department participated in the Hawaiian Entrepreneurship Training Project (HETP) under its Education and Training component. Other participating agencies included the Kamehameha Schools, Office of Hawaiian Affairs, and Alu Like, Inc. This four-month project included two-day business workshops on five islands and a three-week residential business course on Oahu. A total of 205 Hawaiians participated. One-half were native Hawaiians. The Department provided assistance to HETP participants in verifying native Hawaiian ancestral claims.

GRANTS PROGRAM

The Grants Program will assist private, non-profit groups in securing and managing grants that will benefit native Hawaiians. The Hawaiian Homes Commission made a three-year Grants Program Commitment. Services include:

- Information
Current data on available grants and statistical information on Hawaiians.
- Training
Scholarships to native Hawaiians to undertake grants training. Community workshops in various aspects of grantsmanship.
- Grants
Limited amount of direct grants of services and/or cash from the Department to private, non-profit groups. Grants must be used to benefit native Hawaiians only.

Status: The Department filled its Grants Program position. The Hawaiian Homes Commission authorized the Department to hold public hearings in order to promulgate rules on applying for and the awarding of grants to private, non-profit groups.

Implementation: The Department prepared three applications for federal grants — two related to conducting an inventory of Department land resources for native Hawaiian business purposes, one related to homeownership counselling and money management. As of June 30, 1982, one application was denied; two were pending decisions by federal funding sources.

NHDO initiated a newsletter, *Kumu Waiwai*, to provide information to private, non-profit groups on upcoming grant announcements, methods to secure and manage grants, and events related to grants.

Material has been collected for a new grants information center. This center focuses on federal, foundation, and corporate grant sources.

HOUSEHOLD MANAGEMENT PROJECT

The Household Management Project will assist native Hawaiian households in increasing disposable income through effective budgeting, lower household costs, and increased income. The Hawaiian Homes Commission made a one-year commitment to conducting this project in Oahu's Nanakuli community.

Status: The Department retained a consultant to identify existing agency resources for the project and prepare a detailed work plan. This has been completed. The Department's request to create a Household Management Project staff has been approved. Staff will be hired shortly. The project will then be implemented.

SPECIAL PROJECTS

The Special Projects component will involve short-term projects undertaken by the Department to benefit native Hawaiians. The types of projects will vary, but all must relate directly to achieving one or more of the purposes in the NHRF mandate.

Emergency Agricultural Loans

NHDO provided funds for native Hawaiian homestead farmers who were affected by emergency conditions such as flooding and drought. This temporary project was available until July 30, 1982, when legislation was approved increasing the Department's farm loan limit to \$50,000 and expanding farm loan purposes to include emergencies. NHDO emergency agricultural loans were made available to native Hawaiian homestead farmers in the Hamakua District of Hawaii who were affected by natural disasters over a two-year period.

Aquaculture

NHDO initiated a contract with the Oceanic Institute to assess aquaculture potentials on Department lands. This resource inventory is required so that lands can be made available to native Hawaiian businesses either on a general lease basis or through the upcoming aquaculture homestead lease program.

Inventory of DLNR Sugar and Water Leases

An ongoing NHDO project has been the inventory of DLNR sugar and water leases, the source of NHRF revenues. The Department completed a draft inventory and has transmitted this data to DLNR for discussion and reconciliation, as needed. The Department also retained a surveyor to map sugar lease boundaries on standard U.S. Geological Survey maps in order to identify those areas under cultivated sugarcane in 1978, the year constitutional amendments were passed and NHRF was created. This will assist the Department in its monitoring of DLNR sugar and water leases and revenues.

HAWAIIAN HOME LANDS ACTIVITIES

- **Tenth Annual Beautification Contest**
The Governor's tenth annual beautification contest to encourage pride in home ownership and to promote civic pride was held in July. A total of 70 winners in 14 homestead communities were honored. (List of 1982 winners on page 59).
- **Employee of the Year**
Stanley Wong, Engineer in the Planning and Construction Branch, was named employee of the year. He served as the Department's nominee for the Governor's Distinguished State Service Award. Other special Chairman's awards went to Ed Kanahele, East Hawaii District Manager, and Gayle Nakashima, Staff Services Clerical Supervisor.
- **Inter-Office Communication**
A bi-monthly inter-office newspaper, *Ku'i Ka Lono* was instituted as a means of improving internal communication.
- **Legislation**
Passage of H.B. 725 provides the first step in addressing the question of continued land tenure for native Hawaiians with successors who have less than 50 percent Hawaiian blood. The Governor signed the Bill into law reducing the blood quantum for immediate family successors from 50 percent to 25 percent. The U.S. Congress must pass this legislation in order to amend the Hawaiian Homes Commission Act of 1920 as amended.
- **Melvin Kalahiki was sworn in as the new Commissioner from Windward Oahu, replacing Jeff Tai.**



A LOOK TO THE FUTURE

In all activities, the Department works toward accelerating the process of self-determination by and for native Hawaiians. Projects and programs are undertaken to assist in this effort. Plans for fiscal year 1982-83 include:

- Developing quality homestead communities with consideration for impact in development areas, including a cautious and careful approach as regards residential construction.
- Maintaining current technical assistance in the agricultural program; further improvement and development of program components aimed at aiding farmers and ranchers toward greater productivity; wider loan flexibility.
- Further planning and development of aquaculture homesteads *including identification of suitable lands, promulgation of administrative rules, determining qualifications and criteria for aquaculture homesteads seeking alternative funding sources for this program component.*
- Implementation of more Native Hawaiian Development Office programs, including adoption of administrative rules.
- Promoting legislation to increase loan ceilings and to strengthen other program areas.
- Adoption of administrative rules to provide worker's cottages on agricultural homesteads.
- Cooperation with the Federal State Task Force and the Native Hawaiian Study Commission in efforts to improve the condition of native Hawaiians.
- Continuing all efforts to enhance and effectively carry out rehabilitation programs for the benefit of native Hawaiians authorized by the Hawaiian Homes Commission Act, 1920, as amended.

APPENDIX

CIP PROJECTS

Capital Improvement Program projects financed by general obligation bonds provide new facilities or increase the value of existing fixed assets. State-wide, a total of \$30,589,000* in appropriations financed work on 1,236 residential and agricultural lots, and other projects.

PROJECTS	LOTS	APPROPRIATION	AMOUNT	DESCRIPTION OF PROJECT	DESIGN		CONSTR	
					START	COMP	START	COMP
Keaukaha Residential Sub-division, Misc. lots	33	Act 195/75, 3-G-1 Act 195/75, 2-G-2 Act 226/76, 2-G-1 Act 214/79, F-28 Act 1/81, F-10	\$ 85,000 17,000 50,000 390,000 40,000	Surveying and miscellaneous improvements necessary to prepare lots for residential award	12/77	02/80	04/81	12/82
Keaukaha Residential Sub-division, Phase 1	32			Planning and construction for improving existing roadways and creating new residential lots — 1st phase	12/77	12/80	08/82	07/83
Keaukaha Residential Sub-division, Phase 2	22			The 2nd phase	12/77	12/82	10/83	09/84
Keaukaha Residential Sub-division, Phase 3	61			The 3rd and last phase	12/77	12/82	10/85	04/87
Panaewa Residence Lots, Unit 3	40	Act 214/79, F-24	65,000	2nd Increment of 200 lot residential development	08/82	07/83	10/84	04/86
Panaewa Residence Lots, Unit 4	40			3rd Increment	10/83	06/85	08/85	07/86
Panaewa Farm Subdivision Unit 1	(E-67) 46	Act 195/75, 2-G-2 Act 10/77, A-3 Act 10/77, A-6 Act 214/80, A-5A	81,000 2,060,000 49,000 150,000	Planning and design for improving existing roadways and water service for 67 existing lots and 92 (46 new awards 46 adjacent lots awarded later to same lessee) new lots.	02/77	05/79	06/79	06/81
Panaewa Farm Subdivision, Unit 2	(E-25) 67			The 2nd phase	08/83	06/85	08/85	12/87
Kawaihae Residential Subdivision, Unit 1	20	Act 10/77, F-6 Act 1/81, F-9	50,000 470,000	1st Phase of 40 lot residential development	12/77	01/81		Deferred
Kawaihae Residential Subdivision, Unit 2	20			2nd Phase	12/77	01/81		Deferred
HHL Project - Kamooa - Puuoa	—			Plans for development of Hawaiian Home Lands (10,370 + acres)	10/82	06/83	—	—
HHL Project - Waimoa, Hawaii	—	Act 214/79, A-8	75,000	Plans for development of Hawaiian Home Lands (11,000 + acres)	01/82	01/83	—	—
HHL Project - Kawaihae - Hawaii	—	Act 214/79, F-36	30,000	Plans for development of Hawaiian Home Lands (10,100 + acres)	07/82	06/83	—	—
(E-Existing)	(E-92)							(COMP-Completed)
TOTAL HAWAII	381		\$3,632,000					
Anahola Farm Lots - Deepwell	—	Act 10/77, A-4	\$ 190,000	New well source for domestic and irrigation water	05/77	06/79	07/79	10/79
Anahola Farm Lots - Reservoir	—	Act 214/79, F-31 Act 214/80, A-5B	10,000 640,000	Plans and construction of storage system	05/77	02/82	09/82	04/83
Anahola Farm Lots - Subdivision Improvements	35	Act 1/81, F-11	1,470,000	Site development for 35 agricultural lots	05/77	02/82	09/82	06/83
HHL Project - Anahola				Plans for development of Hawaiian Home Lands (2,500 + acres)	08/83	07/84	—	—
Anahola Residence Lots - Drainage Improvements	7	Act 214/79, F-31	10,000	Drainage improvements to permit home construction on 7 lots	08/82	06/83	09/83	06/84
Anahola Residential Subdivision, Unit 3	40	Act 214/79, F-33	75,000	Site development for 40 residential lots	08/82	06/83	09/84	08/85
Kekaha Residential Subdivision, Unit 2	27	Act 214/79, F-32	50,000	Site development for 27 residential lots	08/82	06/83	09/85	08/86
TOTAL KAUAI	109		\$2,445,000					
Paukukalo Drainage Project	—	Act 218/74, F-8	\$ 250,000	To provide the extension of the drain-system from Hawaiian Home Lands to the ocean	03/75	01/79	02/79	03/81
Paukukalo Residential Subdivision, Unit 3	49	Act 10/77, F-5 Act 300/80, F-26B Act 1/81, F-8	150,000 1,200,000 580,000	1st Phase of 93 lot residential development	10/77	01/81	01/82	06/83
Paukukalo Residential Subdivision, Unit 4	44			2nd and last phase	10/77	01/81	01/84	06/85
Paukukalo Tennis Courts	—	Act 9/77, IV-1-1	40,000	Plans and construction of tennis courts at Paukukalo and other improvements				FUNDS DELEGATED TO COUNTY OF MAUI
HHL Project - Maui	—	Act 214/79, A-7	50,000	Plans for development of Hawaiian Home Lands (6,100 + acres)	06/82	03/83	—	—
TOTAL MAUI	93		\$2,270,000					

PROJECTS	LOTS	APPROPRIATION	AMOUNT	DESCRIPTION OF PROJECT	DESIGN START	DESIGN COMP	CONSTR START	CONSTR COMP
Molokai Water System Improvement - Deepwell	—			New deepwell source for Molokai Water System	04/78	05/79	06/79	09/79
Molokai Water System Improvement - Phase 1	—	Act 195/75, A-14 Act 10/77, A-2 Act 214/79, A-5	\$ 1,000,000 1,915,000 265,000	Upgrade and improve existing source and storage system	04/78	06/79	07/79	08/81
Molokai Water System Improvement - Phase 2A	—	Act 300/80, A-5	1,160,000	Improve transmission main to Kalamaula and holding reservoir	03/80	08/81	06/82	07/83
Molokai Water System Improvement - Phase 2B	—	Act 1/82, F-7A	1,000,000	Upgrade and improve distribution system within Kalamaula	03/80	03/83	06/83	05/84
Molokai Water System Improvement - Phase 3	—			Upgrade and improve distribution system within Hoolohua	03/80	06/83	01/84	07/86
HHL Project - Kalamaula, Molokai	—	Act 214/79, F-35	75,000	Plans for development of Hawaiian Home Lands (6,000 + acres)	07/82	04/83	—	—
TOTAL MOLOKAI	—		\$ 5,415,000					
Nanakuli Residence Lots, 5th Series, Inc. 1	103	Act 195/75, F-1 Act 214/79, F-23 Act 214/79, F-30	\$ 3,232,000 70,000 100,000	Third phase of the 380-lot development for residential use	03/75	07/79	08/79	06/81
Nanakuli Residence Lots, 5th Series, Inc. 2	23	Act 300/80, F-23	1,330,000	The 4th phase	03/75	09/80	10/80	12/81
Nanakuli Residence Lots, 5th Series, Inc. 3	53			The 5th phase	03/75	12/82	01/84	06/85
Nanakuli Interim Sewage Disposal	—			Project is required prior to further development of lands	06/76	07/79	08/79	06/81
Nanakuli Drainage Project	—	Act 218/74, F-6	1,307,000	Project is required by the City and County of Honolulu prior to further development of lands	03/75	12/77	01/78	06/79
Haleakala Ave Improvements	—	Act 218/74, F-6 Act 195/75, F-4	73,000 1,294,000	To improve and upgrade Haleakala Avenue to City and County standards	06/76	06/79	07/79	01/81
Nanakuli Road Improvements (Mauka)	—	Act 195/75, F-3 Act 10/77, F-3	890,000 1,535,000	To improve and upgrade Mano, Kauwahi, Kawao, and Piliilau Avenues to City and County standards	01/77	12/78	01/79	06/80
Nanakuli Road Improvements (Makai)	—			To improve and upgrade Pohakunui, Laumania, Keaulana, and Piliokahi Avenues to City and County standards	02/77	02/81	03/84	09/85
HHL Project - Nanakuli, Oahu	—	Act 214/79, F-30	100,000	Plans for development of Hawaiian Home Lands (2,300 + acres)	06/82	05/83	—	—
Waianae Residence Lots, Unit 2A-1	119	Act 218/74, F-4 Act 218/74, F-4 Act 195/75, F-2	323,000 185,000 1,170,000	2nd phase of a total development of 600 residential lots	03/75	06/79	07/79	05/81
Waianae Residence Lots, Unit 2A-2	40	Act 214/79, F-25	1,650,000	3rd phase	03/75	03/83	10/85	04/87
Waianae Residence Lots, Unit 2A-3	82			4th phase	03/75	10/83	10/86	06/88
Waianae Residence Lots, Unit 2B	95			5th phase	03/75	03/83	10/87	09/89
Waianae Reservoir	—	Act 218/74, F-4	1,630,000	Project is required prior to further development of lands	03/75	06/79	07/79	03/81
Waianae Residence Lots Park	—	Act 214/79, F-34 Act 300/80, A-5	200,000 78,000	Plans and construction for neighborhood park at Waianae	01/80	04/82	09/82	06/83
Waianae Valley Road Widening	—	Act 214/79, F-37	117,000	Upgrading of Waianae Valley Road	06/82	07/83	10/83	12/84
Waimanalo Master Plan	—	Act 218/74, F-5	128,000	Master plan of entire Waimanalo area	01/77	12/79	—	—
Waimanalo Residence Lots, Unit 6	38	Act 1/81, F-7	680,000	Continuing development of residence lots	01/77	02/82	10/83	12/84
Waimanalo Residence Lots, Unit 7	15	Act 214/79, F-26	60,000	Continuing development of residence lots	09/82	05/83	10/84	09/85
Waimanalo Residence Lots, Unit 8	60			Continuing development of residence lots	10/84	06/85	10/86	03/88
Makapuu Interceptor Sewer	—	Act 214/79, F-38 Act 1/81, F-7	75,000 600,000	Project is required prior to further development of lands	08/82	04/83	07/83	12/84
TOTAL OAHU	628		\$16,827,000					
Agricultural Lots	173		\$ 4,650,000					
Residential Lots	1,063		12,410,000					
Other Projects	—		13,529,000					
TOTAL STATE	1,236		\$30,589,000*					

* Does not include:
 • Statewide Residential Loan Fund Capitalization \$25,680,000
 • Statewide Replacement Home Loan Fund Capitalization 9,825,000
 • Hawaiian Loan Guarantee Fund Capitalization 2,000,000
 • Statewide Farm Loan Fund Capitalization 1,485,000

DEVELOPMENT FUND PROJECTS SUMMARY

Development Fund Projects are Capital Improvement Program projects financed by Department of Hawaiian Home Lands. These monies supplement CIP appropriations and in this fiscal year were used to improve and upgrade roads and drainage systems to alleviate flooding conditions as well as to construct site improvements for residential single family lot development.

improvements for residential single family lot development.								
PROJECTS	LOTS ISLAND		AMOUNT	DESCRIPTION OF PROJECT	DESIGN		CONSTR	
					START	COMP	START	COMP
MAJOR PROJECTS								
Keaukaha Residential Subdivision, Misc. Lots	33	Hawaii	\$ 45,000	Clear, grub and minor grade 33 vacant residential single family lots	—	—	01/81	06/82
Keaukaha Water Service	33	Hawaii	28,000	Install laterals to provide domestic water service	—	—	03/80	09/80
Kuhio Village Driveway Approaches	58	Hawaii	30,000	Construct driveway connections to comply with County of Hawaii requirements	06/79	02/80	03/80	08/80
Kuhio Village, Cesspools	15	Hawaii	85,000	Emergency pumping; construct second cesspool	—	—	10/81	12/82
Kuhio Village, Home Repairs	55	Hawaii	20,000	Coordinate and administer home repairs	—	—	01/82	12/82
Anahola Residence Lots, Home Repairs	66	Kauai	240,000	Coordinate, administer and construct home repairs	03/82	06/82	07/82	03/83
Paukukalo Drainage Improvements	—	Maui	20,000	Supplement CIP appropriation to alleviate flood condition in Paukukalo residential area	03/75	01/79	02/79	03/81
Haleakala Avenue Improvements	—	Oahu	79,000	Supplement CIP appropriation to improve and upgrade Haleakala Avenue to City and County of Honolulu standards	06/79	06/79	07/79	01/81
Nanakuli Road Improvements (Mauka)	—	Oahu	20,000	Supplement CIP appropriation to upgrade roads and utility systems to City and County of Honolulu standards	01/77	12/78	01/79	07/80
Nanakuli Residence Lots, Series 5, Inc. 1 & Inc. 2	126	Oahu	157,000	Supplement CIP appropriation to construct site improvements to develop 126 residential single family lots	03/75	07/79	08/79	12/81
Nanakuli Residence Lots, 6-Lot Subdivision	6	Oahu	14,000	Plan, design and construct site improvements for six (6) lots subdivision in Nanakuli	07/80	06/81	Deferred Water Moratorium	
Nanakuli Model Homes	7	Oahu	20,000	Bid and construct improvements, as necessary	08/81	12/81	03/82	06/82
Waianae Residence Lots, Unit 2A-1, Security	119	Oahu	20,000	Secure the completed site improvements	—	—	—	—
Development Plans (5 areas)	—	Statewide	75,000	Supplement CIP appropriations to prepare plans	01/82	06/83	—	—
Detailed Designs and Plans	127	Statewide	20,000	Supplement CIP appropriations to prepare designs and plans	06/82	05/83	—	—
SUBTOTAL	645		\$ 873,000					
CONTINUOUS PROJECTS								
Compensation to lessees	35	Statewide	\$ 50,000	Compensate lessees for their improvements affected by road (widening) and utility system construction			CONTINUOUS	
Demolition and removal of existing structures	2	Statewide	5,000	Demolish and remove abandoned and dilapidated structures for safety purposes			CONTINUOUS	
Kahilu Road Improvements	—	Hawaii	60,000	Repairs, maintenance and improvements			CONTINUOUS	
Lanimaumau Stream and Interceptor Channel Maintenance	—	Hawaii	20,000	Maintenance of the drainage systems to minimize flooding			CONTINUOUS	
Puukapu Farm Road Improvements	—	Hawaii	12,000	Repairs, maintenance and improvements			CONTINUOUS	
Nienie Roads Improvements	—	Hawaii	30,000	Repairs, maintenance and improvements			CONTINUOUS	
Consultant Services	—	Statewide	190,000	Plan, design and prepare construction plans; construction engineering			CONTINUOUS	
Miscellaneous Improvements - Homestead Related	45	Statewide	35,000	Minor repairs and improvements: cesspool backfill, access road, eroded condition, fencing, etc.			CONTINUOUS	
Survey - Homestead Lots	35	Statewide	25,000	Subdivide, filing fees, stakeout, etc.			CONTINUOUS	
Water Service (Domestic/Irrigation)	20	Statewide	40,000	Install water laterals to lots prior to award			CONTINUOUS	
SUBTOTAL	137		\$ 467,000					
TOTAL	782		\$1,340,000					

HOUSING PROGRAM SUMMARY

The DHHL's housing program is financed through a revolving loan fund, capitalized by State CIP appropriations. The Farmers Home Administration and lessees themselves also finance home construction.

1981-82

PROJECT	ISLAND	RESIDENTIAL SINGLE FAMILY HOMES			FUNDING		
		NEW	REPLACE- MENT	TOTAL	DHHL	LESSEE	TOTAL
Miscellaneous Housing							
Keaukaha	Hawaii	5	1	6	\$208,000 (6)	\$ 3,000	\$211,000
Puukapa	Hawaii	1		1	33,000 (1)		33,000
Nanakuli	Oahu	1	3	4	137,000 (4)	12,030	149,030
Papakolea/ Kewalo	Oahu		1	1	33,000 (1)	3,700	36,700
Waimanalo	Oahu		3	3	109,000 (3)	3,500	112,500
TOTALS		7	8	15	\$520,000	\$22,230	\$542,230

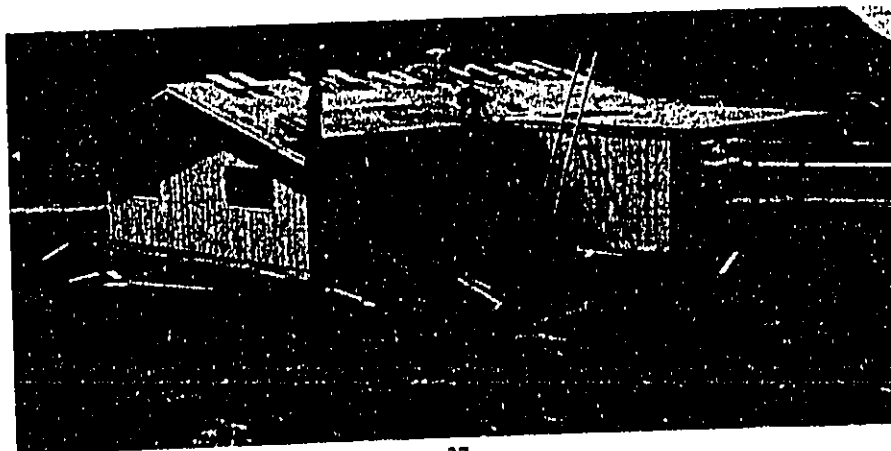
All 15 homes were financed by DHHL; in 4 homes, the lessees provided supplemental funds beyond the ceiling.

HOME REPAIRS PROGRAM SUMMARY

- Plans for repairs and improvements of 87 existing residential single family homes were reviewed and approved.
- The total cost for repairs and improvements was \$383,000.
- DHHL financed 17 home repairs and improvements (20%) at a cost of \$140,000 (37%).
- Lessees personally financed 70 home repairs and improvements (80%) at a cost of \$243,000 (63%).

1981-82

	FUNDING					
	DHHL		LESSEE		TOTAL	
	Number	Cost	Number	Cost	Number	Cost
Repairs and improvements of existing residential single family homes	17	\$140,000	70	\$243,000	87	\$383,000



HAWAIIAN HOME LANDS OCCUPIED BY GOVERNMENT AGENCIES SUMMARY BY ISLAND

Government Agency	Hawaii	Kauai	Maui	Molokai	Oahu	Total Acreage
Federal	552	25	—	364	1,881	2,822
State	11,639	764	1	2,512	97	15,013
Counties	56	26	5	24	45	156
Total	12,247	815	6	2,900	2,023	17,991

REVENUE PRODUCING LANDS USED BY GOVERNMENT AGENCIES

	FEDERAL	STATE	COUNTIES	TOTAL
General Leases	\$23,310	\$484,200	\$9,108	\$516,618
Licenses	276	8,276		8,552
Right of Entry			200	200
Revocable Permits		10,890	600	11,490
Totals	\$23,586	\$503,366	\$9,908	\$536,860

HAWAIIAN HOME LANDS UNDER CONSERVATION SUMMARY BY ISLAND

	Hawaii	Kauai	Maui	Molokai	Oahu	Total Acreage
Acreage Under Conservation	8,466	—	7,050	261	1,913	17,690

GOVERNOR'S EXECUTIVE ORDERS

BY ISLAND

ISLAND	Hawaii	Kauai	Maui	Molokai	Oahu	Total
Number	9	4	2	5	11	31
Acreage	11,270	764	1	43	1,921	13,999

USE SUMMARY

Use	No.	Acreage
Airports	3	76
Beach Reserve	1	4
Communication/Radar	3	1,796
Easement/Roads	1	1
Forest/Conservation	2	767
Game Management	1	11,124
Parks	4	22
Public Service	5	58
Schools	6	17
Storage Area	2	132
Water Storage	3	2
GRAND TOTAL	<u>31</u>	<u>13,999</u>

GOVERNOR'S EXECUTIVE ORDERS

BY ISLAND

ISLE/AREA	#/USE	ISSUED TO:	LOCATION/TMK	DATE ISSUED
HAWAII 3,912	1271 Public Service	USA-FAA	Keaukaha 2-1-13:09	11/10/48
HAWAII 48,136	1280 Communications/Radar	USA-FAA	Keaukaha 2-1-13:08	11/23/48
HAWAII 28,800	1609 Public Service	County of Hawaii	Kamaea Puuoa 9-3-01:07	01/11/54
HAWAII 11,123.80	1653 Game Management	DLNR	Aiea Hou 3-8-01:08	08/24/54
HAWAII 23,406	1707 Public Service	County of Hawaii	Waimea/Puukapu 6-4-02:125	12/01/55
HAWAII 40,682	1789 Airport	DOT/Airport Division	Waimea/Puukapu 6-7-01:08 (P)	05/21/57
HAWAII .073	1859 Communications/Radar	DOT/Airport Division	Waimea/Puukapu 6-4-04:22 & 23	09/02/58
HAWAII 1,013	2262 Water Storage	County of Hawaii	Waimea/Puukapu 6-4-02:143	02/10/66
HAWAII .044	2333 Water Storage	County of Hawaii	Waimea/Puukapu 6-4-01:117	08/28/67
KAUAI 3,740	139 Schools	DOE	Anahola 4-8-05:01	03/26/23
KAUAI	630 Parks	County of Kauai	Anahola 4-8-09:01	01/24/35
KAUAI 760,000	1510 Forest/Conservation	DLNR	Puukapele 1-2-01:03 & 04	05/15/52
KAUAI	1690 Parks	County of Kauai	Anahola 4-8-14:06	07/13/55
MAUI .627	2493 Water Storage Eas/Roads	County of Maui	Kula 2-2-04:36 (P) & 69	12/16/69
MAUI .635	2494 Public Service Eas/Roads	DOH	Kula 2-2-04:36 (P) & 70	12/16/69
MOLOKAI 20,784	809 Airport	DLNR/DOT	Hoolchua/Palaau 5-2-04:08 (P)	07/15/38
MOLOKAI	831 Schools	DOE	Hoolchua/Palaau 5-2-15:02	12/23/38
MOLOKAI 7,000	1166 Forest/Conservation Public Service	DLNR	Kalamaula 5-2-08:77 & 83	07/22/46
MOLOKAI 2,941	1837 Airport	DLNR/DOT	Hoolchua/Palaau 5-2-04:83 (P)	04/28/58
MOLOKAI .107	1837 Airport	DLNR/DOT	Hoolchua/Palaau 5-2-04:83 (P)	04/28/58
MOLOKAI 11,176	1837 Airport	DLNR/DOT	Hoolchua/Palaau 5-2-04:84 (P)	04/28/58
MOLOKAI	1837 Eas/Aviation	DLNR/DOT	Hoolchua/Palaau 5-2-04:27 (P); 55 (P); 57 (P); 102 (P)	04/28/58
MOLOKAI 1,435	1979 Roads	DLNR/DOT	Hoolchua/Palaau 5-2-04:08 (P)	11/03/61
OAHU 132,000	382 Storage Areas	Dept. of the Navy	Lualualei 8-8-01:01 (P)	07/21/30
OAHU 5,130	563 Schools	DOE	Nanakuli 8-9-01:04 (P)	03/25/33
OAHU 1,748,400	599 Communications/Radar	Dept. of the Navy	Lualualei 8-6-02:01	12/22/33
OAHU 4,090	1124 Beach Reserve	City & County of Honolulu	Nanakuli 8-9-01:02 (P)	11/02/45
OAHU .874	1152 Parks	City & County of Honolulu	Papahouka/Kewalo 2-2-15:25	04/26/46
OAHU 1,557	1194 Schools	DOE	Nanakuli 8-9-01:04 (P)	06/25/47
OAHU 20,800	1393 Parks	City & County of Honolulu	Waimanalo 4-1-14:05	09/11/50
OAHU .814	1463 Public Service Storage Areas	City & County of Honolulu	Waianae 8-6-01:41	08/15/61
OAHU .023	1579 Schools	DOE	Nanakuli 8-9-01:04 (P)	09/09/53
OAHU 6,963	1725 Schools	DOE	Nanakuli 8-9-01:04 (P)	03/21/56
OAHU	2009 Storage Areas	DLNR/DOT	Waianae 8-6-01:40	04/16/62

HAWAIIAN HOME LANDS UNDER DLNR MANAGEMENT

BY ISLAND

	Hawaii	Kauai	Maui	Molokai	Oahu	Total
Number	5	9	—	—	6	20
Acreage	301	16,084	—	—	21	16,406
DHHL Annual Income	\$381	\$74,251	—	—	\$6,059	\$80,691

USE SUMMARY

Use	No.	Acreage	DHHL Annual Income
Agriculture	6	16,054	\$72,228
Commercial	1	4	3,900
Communication/Radar	3	3	21
Easements	2	4	444
Health Service	1	14	0
Pasture	2	5	217
Public Service	1	0	0
Residence	2	1	3,880
Storage Areas	1	26	1
Training	1	295	0
	<u>20</u>	<u>16,406</u>	<u>\$80,691</u>

HAWAIIAN HOME LANDS UNDER DLNR MANAGEMENT

GENERAL LEASES

BY ISLAND

ISLE/AREA	#/USE	LESSEE/ADDRESS	LOCATION/TMK	TERMS	REMARKS
HAWAII 2,938	3697 Communications/ Radar	Hawaiian Telephone Co. 1177 Bishop Street Honolulu, Hawaii 98613	Humuula 3-8-01:07 (P) & 12	21 yr. 01/26/62-01/25/83 @ \$20.00	
HAWAII	3752 Communications/ Radar Easement	USA-Navy 14th Naval District, Navy 128, Box 94 FPO San Francisco 99610	Kamaoa-Puuco 9-3-01:10	65 yr. 12/16/63-12/15/2028 @ \$1.00	
HAWAII 295,000	3849 Training	USA-Army Army Engineer Division Fort Shafter, Hawaii 96858	Humuula 3-8-01:13	65 yr. 08/17/64-08/16/2029 @ \$1.00 for term	
HAWAII 3,825	3887 Easement	Hilo Electric Co. Hilo, Hawaii 96720	Humuula 3-8-01:07 (P)	30 yr. 01/20/65-01/19/95 @ \$360.00 01/20/85	2nd Reopen Date
KAUAI .610	3679 Residence	William K. Lemn Anahola, Hawaii 96703	Anahola 4-8-08:32	30 yr. 12/18/61-12/17/91 @ \$1,900.00	
KAUAI 3,090	3736 Pasture	Susumu Nakamura P.O. Box 106 Anahola, Hawaii 96703	Anahola 4-8-12:04, 06 4-8-13:13	20 yr. 04/26/63-04/25/83 @ \$122.00	
KAUAI 1,357	3804 Agriculture	Toraji & Chuichi Oshima P.O. Box 62 Anahola, Hawaii 96703	Anahola 4-8-06:26	20 yr. 11/26/63-11/25/83 @ \$600.00	
KAUAI 4,642	3829 Agriculture	Chiyeko K. Yoshii & Robert A. Lemn P.O. Box 77 Anahola, Hawaii 96703	Anahola 4-8-07:11 4-8-08:01 & 16	20 yr. 05/11/64-05/10/84 @ \$155.00 05/11/74	1st Reopen Date
KAUAI 2,214	3830 Agriculture	Robert & Shimaya Hamamura Anahola, Hawaii 96703	Anahola 4-8-11:16, 35, 36 38 & 40	20 yr. 05/11/64-05/10/84 @ \$168.00	
KAUAI 25,686	3852 Storage Areas	USA-USN 14th Naval District, Navy 128, Box 94 FPO San Francisco 99610	Kekaha 1-2-02:29	65 yr. 08/20/64-08/19/2029 @ \$1.00	
KAUAI 2,357	3878 Agriculture	Ume N. Oshita P.O. Box 123 Anahola, Hawaii 96703	Anahola 4-8-11:45	20 yr. 01/11/65-01/10/85 @ \$300.00 01/11/75	1st Reopen Date
KAUAI 14,558,000	4222 Agriculture	Kekaha Sugar Co. 700 Bishop Street Honolulu, Hawaii 96801	Kekaha 1-2-02:23	25 yr. 01/01/69-12/31/93 @ \$55,208.88 01/01/84	1st Reopen Date

GENERAL LEASES

ISLAND/AREA	#/USE	LESSEE/ADDRESS	LOCATION/TMK	TERMS	REMARKS
KAUAI 1,485,850	4576 Agriculture	Lihue Plantation P.O. Box 751 Lihue, Hawaii 96766	Anahola/Kamalomalo HSS PLAT 3003-D(1)	25 years 12/15/77-12/14/2002 @ \$15,796.50 12/15/92	1st Reopen Date
OAHU .282	3813 Communications/ Radar	USA-Navy 14th Naval District, Navy 128, Box 94 FPO San Francisco 99610	Nanakuli 8-9-06:88	07/01/64-06/30/2014 Gratias	
OAHU	3897 Easement	Hawaiian Electric Co. P.O. Box 2750 Honolulu, Hawaii 96803	Nanakuli 8-9-07:01 (P) & 02 (P)	65 years 03/11/65-03/10/2030 @ \$84.00 03/11/80 03/11/95 03/11/2010	1st Reopen Date 2nd Reopen Date 3rd Reopen Date
OAHU 14,352	4369 Health Service	Research Corp. of U.H. 1110 University Ave., #402 Honolulu, Hawaii 96814	Lualualei 8-6-01:03	65 years 11/01/72-10/31-2037 @ \$1.00 for term	

REVOCABLE PERMITS

ISLE/AREA	#/USE	PERMITTEE/ADDRESS	LOCATION/TMK	DATE ISSUED/ANNUAL RENT
HAWAII	3515 Public Service	County Fire Dept.	Keaukaha 2-1-13:07 (P)	04/01/64 Gratis
OAHU 400	5273 Residence	Antone F. Pereira 87-028 Farrington Highway Waianae, Hawaii 96792	Lualualei 8-7-01:29	02/10/69 @ \$1,980.00
OAHU 3,949	5282 Commercial	Hui Mea Hana O Hawaii P.O. Box 372 Waimanalo, Hawaii 96795	Waimanalo 4-1-09:271	10/01/76 @ \$3,900.00
OAHU 1,927	5340 Pasture	Joe Williams 6307 Ookala Place Waimanalo, Hawaii 96795	Waimanalo 4-1-09:263	11/01/76 @ \$95.04

GENERAL LEASE SUMMARY BY ISLAND

	Hawaii	Kauai	Maui	Molokai	Oahu	Total
Number	68	1	3	5	11	88
Acreage	50,658	316	21,680	693	2,276	75,623
DHHL Annual Income	\$1,268,116	\$3,500	\$52,750	\$28,450	\$39,793	\$1,392,609

GENERAL LEASE SUMMARY BY USE

Use	No.	Acreage	DHHL Annual Income
Agriculture	5	645	\$ 13,710
Commercial	2	39	179,800
Dairy	3	107	12,815
Government	6	641	516,618
Industrial	57	136	355,974
Pasture	11	74,050	300,720
Public Utility	4	5	12,972
TOTAL	88	75,623	\$1,392,609

GENERAL LEASES

ISLE/ACR.	#/USE	NAME	LOCATION/TMK	TERMS	REOPENINGS
HAWAII 9.699	102 Indus.	Hawaiian Timber Products, Inc. 50 Kukila St. Hilo, Hawaii 96720	Waiakea 2-2-47:59	40 years 03-02-66/03-01-06 @ \$34,300.00	03-02-76 03-02-86 03-02-96
HAWAII 3.905	108 Indus.	Inter-Pacific Motors, Inc. P.O. Box 4397 Hilo, Hawaii 96720	Waiakea 2-2-60:75	65 years 11-01-66/10-31-31 @ \$14,530.20	11-01-91 11-01-11
HAWAII 1.245	109 Indus.	Hawaii Anthurium Growers Cooperative 30 Makaala St. Hilo, Hawaii 96720	Waiakea 2-2-60:64	65 years 09-01-66/08-31-31 @ \$5,206.20	09-01-91 09-01-11
HAWAII 33.793	110 Indus.	Yamada & Sons, Inc. P.O. Box 4699 Hilo, Hawaii 96720	Panaewa 2-1-25:01, 41, 42 & 84	65 years 11-01-66/10-31-31 @ \$19,045.80	11-01-91 11-01-11
HAWAII .465	112 Indus.	Koreaki Iwashita Contracting Co. P.O. Box 802 Hilo, Hawaii 96720	Waiakea 2-2-60:29	40 years 01-01-67/12-31-06 @ \$1,572.00	01-01-82 01-01-92 01-01-02
HAWAII .928	113 Indus.	R. & J. Steel, Inc. 154 Holomua St. Hilo, Hawaii 96720	Waiakea 2-2-60:50 & 51	55 years 06-15-69/06-14-24 @ \$5,000.00	06-15-94 06-15-09
HAWAII .930	115 Indus.	McCabe Paving Co. 107 Makaala St. Hilo, Hawaii 96720	Waiakea 2-2-60:30 & 31	40 years 08-01-67/07-31-07 @ \$3,144.00	08-01-87 08-01-97
HAWAII .416	116 Indus.	Hawaii Anthurium Growers Cooperative 30 Makaala St. Hilo, Hawaii 96720	Waiakea 2-2-60:67	40 years 09-01-67/08-31-07 @ \$1,740.00	09-01-87 09-01-97
HAWAII 2.009	122 Indus.	Honolulu Wood Treating Co., Inc. 91-291 Hanua Ewa Beach, Hawaii 96706	Waiakea 2-2-47:60	40 years 10-01-67/09-30-07 @ \$4,305.59	10-01-87 10-01-97
HAWAII .930	126 Indus.	Hilo Toyota, Inc. 1 Keaa St. Hilo, Hawaii 96720	Waiakea 2-2-60:71	55 years 01-01-68/12-31-22 @ \$4,700.00	01-01-88 01-01-08
HAWAII .463	127 Indus.	Oshiro Contractor, Inc. 153 Makaala St. Hilo, Hawaii 96720	Waiakea 2-2-60:35	40 years 01-01-68/12-31-07 @ \$1,754.00	01-01-88 01-01-98
HAWAII 7,078.00	128 Past.	Charles Benlehr, Ltd. P.O. Box 1188 Hilo, Hawaii 96720	Piihonua 2-6-18:02	25 years 05-01-68/04-30-93 @ \$61,900.00	01-01-82
HAWAII .810	129 Indus.	Industrial Steel Corp. 55 Kukila St. Hilo, Hawaii 96720	Waiakea 2-2-47:61	55 years 03-02-68/03-01-23 @ \$3,000.00	03-02-88 03-02-08
HAWAII 1.115	132 Indus.	Bayfront Service, Inc. 175 Wiwoole St. Hilo, Hawaii 96720	Waiakea 2-2-60:72	55 years 05-01-68/04-30-23 @ \$4,952.00	05-01-93 05-01-08
HAWAII 4.470	135 Utility	Hawaiian Telephone Co. P.O. Box 2200 Honolulu, Hawaii 96801	Waiakea 2-2-47:63	65 years 11-01-68/10-31-33 @ \$10,676.40	11-01-93 11-01-13
HAWAII 5.800	136 Indus.	Pioneer Lumber & Treating Co. 750 Kalaniana'ole Ave. Hilo, Hawaii 96720	Kawaihae 6-1-6:11	65 years 09-01-68/08-31-33 @ \$24,000.00	09-01-93 09-01-13
HAWAII 12.750	138 Indus.	Shield Pacific, Ltd. P.O. Box 3000 Kailua-Kona, Hawaii 96740	Panaewa 2-1-25:86	50 years 12-01-68/11-30-18 @ \$13,200.00	12-01-88 12-01-03
HAWAII .742	140 Indus.	A & A Hawaii, Ltd. 194 Wiwoole St. Hilo, Hawaii 96720	Waiakea 2-2-60:62 & 63	55 years 01-15-69/01-14-24 @ \$3,102.00	01-15-94 01-15-09
HAWAII .494	141 Indus.	Big Island Car Wash P.O. Box 4397 Hilo, Hawaii 96720	Waiakea 2-2-60:70	55 years 06-15-69/06-14-24 @ \$2,193.00	06-15-94 06-15-09
HAWAII .916	142 Indus.	Davies Euromotors, Ltd. 704 Ala Moana Blvd. Honolulu, Hawaii 96813	Waiakea 2-2-60:68 & 69	55 years 06-15-69/06-14-24 @ \$4,068.00	06-15-94 06-15-09
HAWAII 4.880	143 Indus.	M. Sonomura Contracting Co., Inc. P.O. Box 1452 Hilo, Hawaii 96720	Panaewa 2-1-25:87	65 years 06-15-69/06-14-34 @ \$7,527.00	06-15-94 06-15-14
HAWAII .463	144 Indus.	Association of Balberde & Balberde 435 Hailai St. Hilo, Hawaii 96720	Waiakea 2-2-60:49	55 years 06-15-69/06-14-24 @ \$2,032.00	06-15-94 06-15-09
HAWAII 4.250	145 Indus.	Yamada & Sons, Inc. P.O. Box 4699 Hilo, Hawaii 96720	Panaewa 2-1-25:85	62 1/2 years 05-01-69/10-31-31 @ \$288.00	11-01-91 11-01-11

ISLE/ACR.	#/USE	NAME	LOCATION/TMK	TERMS	REOPENINGS
HAWAII .930	146 Indus.	R. & J. Steel, Inc. 154 Holomua St. Hilo, Hawaii 96720	Waiakea 2-2-60:52 & 53	55 years 06-16-69/06-15-24 @ \$4,082.00	06-16-94 06-16-09
HAWAII .930	147 Indus.	Fair Contracting Co. 133 Makaala St. Hilo, Hawaii 96720	Waiakea 2-2-60:32 & 33	55 years 06-16-69/06-15-24 @ \$8,505.00	06-16-94 06-16-09
HAWAII .743	148 Indus.	Industrial Steel Corp. 55 Kukila St. Hilo, Hawaii 96720	Waiakea 2-2-47:62	53 1/2 years 09-01-69/03-01-23 @ \$2,976.00	09-01-88 09-01-08
HAWAII .465	151 Indus.	Fair Contracting Co. 133 Makaala St. Hilo, Hawaii 96720	Waiakea 2-2-60:34	54 years 10 mos. 08-16-69/06-15-24 @ \$4,253.00	08-16-94 08-16-09
HAWAII .323	152 Indus.	Tom T. Okano Enterprises, Inc. 801 Waiianuenue Ave. Hilo, Hawaii 96720	Waiakea 2-2-60:45	40 years 10-01-69/09-30-09 @ \$1,434.00	10-01-94
HAWAII .837	155 Indus.	Unitco 15233 Ventura Blvd., Suite 710 Sherman Oaks, CA. 91403	Waiakea 2-2-60:60	55 years 02-15-70/02-14-25 @ \$3,784.00	02-15-95 02-15-10
HAWAII 10.000	156 Indus.	Laupahoehoe Trans. Co. 35 Holomua St. Hilo, Hawaii 96720	Panaewa 2-1-25:89	65 years 04-01-70/03-31-35 @ \$25,372.74	04-01-95 04-01-15
HAWAII 17.120	157 Past.	Waimea Cattle & Agri. Corp. P.O. Box 1072 Kamuela, Hawaii 96743	Waimea/Puukapu 6-4-8:11(P) & 26(P)	25 years 04-01-70/03-31-95 @ \$474.00	04-01-85 04-01-90
HAWAII .930	158 Indus.	M. Sonomura Contracting Co., Inc. P.O. Box 1452 Hilo, Hawaii 96720	Waiakea 2-2-60:58 & 59	55 years 07-01-70/06-30-25 @ \$4,203.92	07-01-95 07-01-10
HAWAII .463	159 Indus.	Hawaii Paper Products, Inc. 167 Makaala St. Hilo, Hawaii 96720	Waiakea 2-2-60:36	35 years 07-01-70/06-30-05 @ \$2,226.00	07-01-90
HAWAII .465	160 Indus.	Jiro Tanaka P.O. Box 327 Kamuela, Hawaii 96743	Waiakea 2-2-60:57	40 years 11-01-70/10-31-10 @ \$2,236.00	11-01-85 11-01-95
HAWAII .930	161 Indus.	Tainaloha Co., Inc. P.O. Box 182 Papaikou, Hawaii 96781	Waiakea 2-2-60:37 & 38	55 years 11-01-70/10-31-25 @ \$4,860.00	11-01-90 11-01-05
HAWAII .930	163 Indus.	L. H. Nishimoto Plumbing Contractor, Inc. 182 Holomua St. Hilo, Hawaii 96720	Waiakea 2-2-60:47 & 48	55 years 11-01-70/10-31-25 @ \$4,860.00	11-01-90 11-01-05
HAWAII 2.337	164 Indus.	Mrs. Richard S.F. Lam 3890 Diamond Head Rd. Honolulu, Hawaii 96816	Waiakea 2-2-60:83	65 years 11-01-70/10-31-35 @ \$9,445.00	11-01-95 11-01-15
HAWAII .866	165 Indus.	Trojan Lumber Co. P.O. Box 5057 Hilo, Hawaii 96720	Waiakea 2-2-60:39 & 40	40 years 11-01-70/10-31-10 @ \$4,059.00	11-01-84 11-01-95
HAWAII .465	166 Indus.	Tajiri Enterprises, Inc. 100 Holomua St. Hilo, Hawaii 96720	Waiakea 2-2-60:56	40 years 11-01-70/10-31-10 @ \$2,430.00	11-01-85 11-01-95
HAWAII .422	167 Indus.	Kurohara Shop for Men, Inc. 266 Makaala St. Hilo, Hawaii 96720	Waiakea 2-2-60:84	40 years 11-01-70/10-31-10 @ \$2,024.00	11-01-85 11-01-95
HAWAII .465	168 Indus.	Tom Okano Enterprises, Inc. 801 Waiianuenue Ave. Hilo, Hawaii 96720	Waiakea 2-2-60:46	40 years 02-01-71/01-31-11 @ \$2,916.00	02-01-86 02-01-96
HAWAII .465	169 Indus.	Big Island Moving & Draying, Inc. 118 Holomua St. Hilo, Hawaii 96720	Waiakea 2-2-60:54	40 years 02-01-71/01-31-11 @ \$3,200.00	02-01-86 02-01-96
HAWAII .465	170 Indus.	Rainbow Holding, Inc. 100 Holomua St. Hilo, Hawaii 96720	Waiakea 2-2-60:55	40 years 02-01-71/01-31-11 @ \$2,916.00	02-01-86 02-01-96
HAWAII .370	171 Indus.	A & A Hawaii, Inc. 194 Wiwoole St. Hilo, Hawaii 96720	Waiakea 2-2-60:41	55 years 02-01-71/01-31-26 @ \$2,322.00	02-01-91 02-01-06
HAWAII .364	172 Indus.	Eaves & Meredith Co. 841 Mapunapuna St. Honolulu, Hawaii 96819	Waiakea 2-2-60:42	55 years 02-01-71/01-31-26 @ \$2,281.00	02-01-91 02-01-06
HAWAII .432	173 Indus.	A & A Hawaii, Inc. 194 Wiwoole St. Hilo, Hawaii 96720	Waiakea 2-2-60:17	55 years 02-01-71/01-31-26 @ \$2,257.00	02-01-91 01-01-06

ISLE/ACR.	#/USE	NAME	LOCATION/TMK	TERMS	REOPENINGS
HAWAII .411	174 Indus.	THY Corp. 222 Makaala St. Hilo, Hawaii 96720	Waiakea 2-2-60:16	40 years 02-01-71/01-31-11 @ \$2,148.00	02-01-86 02-01-96
HAWAII .531	175 Indus.	Bob's Fender Shop 1256 Kumukoa St. Hilo, Hawaii 96720	Waiakea 2-2-60:14 & 15	55 years 02-01-71/01-31-26 @ \$2,775.00	02-01-91 02-01-06
HAWAII 1.435	176 Indus.	M. Sonomura Contracting Co., Inc. P.O. Box 1452 Hilo, Hawaii 96720	Waiakea 2-2-60:11	65 years 02-01-71/01-31-36 @ \$5,138.00	02-01-96 02-01-16
HAWAII 1.000	177 Indus.	Arakaki Electric, Inc. 264 Mokauea St. Honolulu, Hawaii 96819	Kawaihae 6-1-6:12	55 years 07-23-71/07-23-26 @ \$2,510.00	07-23-91 07-23-11
HAWAII 6.513	178 Indus.	Weiser Cedar Sales, Inc. P.O. Box 5 Kahului, Hawaii 96732	Kawaihae 6-1-6:06	55 years 05-01-72/04-30-27 @ \$15,040.53	05-01-92 05-01-12
HAWAII .636	183 Indus.	Hicks Construction Co. 2331 S. Beretania Honolulu, Hawaii 96826	Waiakea 2-2-60:43 & 44	55 years 12-12-74/12-11-29 @ \$7,200.00	12-12-94 12-12-09
HAWAII 9,930.000	184 Past.	Kahua Ranch, Ltd. 3140 Ualena St. Honolulu, Hawaii 96819	Kawaihae 6-1-1:02, 03 & 16	35 years 01-09-76/01-08-11 @ \$45,000.00	01-09-86 01-09-96 01-09-06
HAWAII .578	187 Indus.	HITCO Moving & Storage Co. 144 Makaala St. Hilo, Hawaii 96720	Waiakea 2-2-60:24	30 years 08-23-76/08-22-06 @ \$6,550.00	08-23-86 08-23-96
HAWAII .517	188 Indus.	Taialoha Co., Inc. P.O. Box 182 Papaikou, Hawaii 96781	Waiakea 2-2-60:18	30 years 08-23-76/08-22-06 @ \$5,800.00	08-23-86 08-23-96
HAWAII 4.881	190 Indus.	M. Sonomura Contracting Co., Inc. P.O. Box 1452 Hilo, Hawaii 96720	Panewa 2-1-25:88	30 years 11-12-76/11-11-06 @ \$19,060.00	11-12-86 11-12-96
HAWAII .524	195 Commer.	Awili, Inc. 60 Apapane Rd. Hilo, Hawaii 96720	Keaukaha 2-1-23:157	25 years 07-15-77/07-14-02 @ \$6,550.00	07-15-82 07-15-87 07-15-92 07-15-97
HAWAII 181.077	198 Pub. Serv.	Fed. Aviation Admin. Western Pacific Region P.O. Box 50109 Honolulu, Hawaii 96850	Makuu 1-5-10:17	10 years 08-01-77/07-31-87 @ \$5,070.00	
HAWAII 5,290.000	199 Past.	Parker Ranch P.O. Box 458 Kamuela, Hawaii 96743	Humuula 3-8-1:09	25 years 09-01-77/08-31-02 @ \$29,800.00	09-01-87 09-01-97
HAWAII 7,512.800	200 Past.	Parker Ranch P.O. Box 458 Kamuela, Hawaii 96743	Humuula 3-8-1:02	25 years 09-01-77/08-31-02 @ \$45,200.00	09-01-87 09-01-97
HAWAII 20,377.137	201 Past.	Parker Ranch P.O. Box 458 Kamuela, Hawaii 96743	Humuula 3-8-1:07	25 years 09-01-77/08-31-02 @ \$52,800.00	09-01-87 09-01-97
HAWAII 38.975	202 Commer.	Orchid Isle Group 190 S. King St., Suite 1816 Honolulu, Hawaii 96813	Panewa 2-2-47:6 & 01 (P)	53 years 10-01-77/09-30-30 @ \$173,250.00	10-01-90 10-01-00
HAWAII 2.000	204 Indus.	Shuman Lumber Co. of Hilo, Inc. 60 Kean St. Hilo, Hawaii 96720	Kawaihae 6-1-6:08	30 years 05-05-78/05-04-08 @ \$4,000.00	05-05-88 05-05-98
HAWAII 2.000	205 Indus.	Kawaihae Millwork, Inc. P.O. Box 4950 Kamuela, Hawaii 96743	Kawaihae 6-1-6:13	30 years 05-05-78/05-04-08 @ \$5,000.00	05-05-88 05-05-98
HAWAII 2.588	206 Indus.	Boyd Enterprises, Inc. P.O. Box 2339 Kailua-Kona, Hawaii 96740	Kawaihae 6-1-6:14	30 years 05-05-78/05-04-08 @ \$8,450.00	05-05-88 05-05-98
HAWAII 1.134	207 Indus.	South Pacific Ship & Chandlery, Ltd. P.O. Box 2339 Kailua-Kona, Hawaii 96740	Kawaihae 6-1-6:16	30 years 05-05-78/05-04-08 @ \$3,000.00	05-05-88 05-05-98
HAWAII .579	208 Indus.	Eagle Distributors 99-877 Iwaena Aiea, Hawaii 96701	Waiakea 2-2-60:22	30 years 06-02-78/06-01-08 @ \$7,000.00	06-02-88 06-02-98
HAWAII 91.595	210 Airport	Dept. of Transportation 869 Punchbowl St. Honolulu, Hawaii 96814	Waiakea 2-1-12:22 (P) & 30	30 years 04-01-75/03-31-05 @ \$481,422.00	04-01-85 04-01-95
KAUAI 315.970	104 Agri.	Amil Valpoon & Amil Valpoon Jr. P.O. Box 361 Anahola, Hawaii 96703	Molokai 4-9-10:02 & 05	35 years 05-01-66/04-30-01 @ \$3,500.00	05-01-91

ISLE/ACR.	#/USE	NAME	LOCATION/TMK	TERMS	REOPENINGS
MAUI 15,620.000	101 Past.	Maui Factors, Inc. P.O. Box 854 Wailuku, Hawaii 96793	Kahikinui 1-9-01:03 & 07 (P)	25 years 04-01-67/03-31-92 @ \$31,240.00	04-01-87
MAUI 6059.466	133 Past.	Kaonoulu Ranch Co. P.O. Box 1141 Wailuku, Hawaii 96801	Kula 2-2-2:14 2-2-4:36	25 years 11-01-68/10-31-93 @ \$21,210.00	
MAUI .072	191 Utility	Gasco, Inc. P.O. Box 3379 Honolulu, Hawaii 96842	Paukukalo 3-3-5:03 (P)	25 years 06-01-76/05-31-01 @ \$300.00	05-31-83 05-31-90
MOLOKAI 139.831	149 Agri.	Molokai Ranch, Ltd. P.O. Box 8 Kaunakakai, Hawaii 96748	Hoolehua/Palaau 5-2-11:16, 17, 18 & 19	25 years 09-01-69/08-31-94 @ \$4,887.00	09-01-84
MOLOKAI 39.875	182 Agri.	Heine & Becky Mokuau P.O. Box 87 Hoolehua, Hawaii 96729	Hoolehua/Palaau 5-2-26:08	25 years 08-01-73/07-31-98 @ \$250.00	08-01-83 08-01-88 08-01-93
MOLOKAI 149.100	185 Agri.	Na Hua Ai Farms P.O. Box 165 Hoolehua, Hawaii 96729	Hoolehua/Palaau 5-2-01:05	25 years 06-14-76/06-13-01 @ \$5,073.00	06-14-86 06-14-96
MOLOKAI 1.000	196 Pub. Serv.	U.S. Postal Service San Bruno, CA. 94099	Hoolehua/Palaau 5-2-23:02	25 years 07-01-77/06-30-02 @ \$780.00	07-01-87 07-01-97
MOLOKAI 363.673	203 Pub. Serv.	Western Space and Missile Center Dept. of the Air Force c/o Headquarters Vandenberg Air Force Base, CA. 93437	Hoolehua/Palaau 5-2-6:53	10 years 01-01-78/12-31-87 @ \$17,460.00	
OAHU 486.700	103 Past.	Waianae Valley Farms, Ltd. 2325 Liliha St. Honolulu, Hawaii 96817	Nanakuli 8-9-07:02	25 years 02-01-66/01-31-91 @ \$2,226.50	02-01-86
OAHU 1527.920	105 Past.	Tongg Ranch, Inc. 173-C S. Kukui St. Honolulu, Hawaii 96813	Nanakuli 8-9-8:03, 06 & 07	25 years 04-01-66/03-31-91 @ \$6,270.00	04-01-86
OAHU 45.420	107 Past.	Gertrude K. Toledo P.O. Box 717 Waianae, Hawaii 96792	Lualualei 8-6-3:03 (P)	25 years 07-01-70/06-30-95 @ \$1,400.00	07-01-85
OAHU 4.176	111 Dairy	Ernest M. Souza 86-550 Lualualei Homestead Rd. Waianae, Hawaii 96792	Lualualei 8-6-3:01	25 years 01-01-69/12-31-93 @ \$5,009.00	01-01-84
OAHU 212	114 Utility	Hawaiian Telephone Co. P.O. Box 2200 Honolulu, Hawaii 96801	Nanakuli 8-9-5:84	65 years 05-01-67/04-31-32 @ \$950.00	05-01-92
OAHU 265	134 Utility	Hawaiian Telephone Co. P.O. Box 2200 Honolulu, Hawaii 96801	Waimanalo 4-1-21:31	65 years 06-01-68/05-31-33 @ \$1,045.80	06-01-93 06-01-13
OAHU 69.990	153 Dairy	George Freitas Dairy, Inc. 1650 Liliha St. Honolulu, Hawaii 96817	Waianae 8-5-04:01 & 58	20 years 02-01-70/01-31-90 @ \$5,086.00	01-31-90
OAHU 33.330	154 Dairy	Carlos Dairy c/o Laverne Cox 92775 Maailili Pl. Ewa Beach, Hawaii 96706	Waianae 8-5-4:52 & 59	20 years 02-01-70/01-31-90 @ \$2,720.00	01-31-90
OAHU 105.000	181 Past.	Fred Teixeira 41-050 Kalaniana'ole Hwy. Waimanalo, Hawaii 96795	Waimanalo 4-1-14:07 & 12 4-1-17:21 4-1-2:01	25 years 09-28-72/09-27-97 @ \$3,200.00	09-28-82 09-28-92
OAHU .805	193 Pub. Serv.	Dept. of Trans./Highways Division 869 Punchbowl St. Honolulu, Hawaii 96813	Lualualei 8-6-1:40	25 years 07-01-77/06-30-02 @ \$2,778.00	07-01-87 07-01-97
OAHU 2.670	194 Pub. Serv.	C & C of Honolulu, D.P.W. 650 S. King St. Honolulu, Hawaii 96813	Lualualei 8-6-1:22	25 years 07-01-77/06-30-02 @ \$9,108.00	07-01-87 07-01-97

HAWAIIAN HOME LANDS LICENSE SUMMARY

BY ISLAND

	Hawaii	Kauai	Maui	Molokai	Oahu	Total
Number	31	6	5	26	49	117
Acreage	16	11	7	984	100	1,118
DHHL Annual Income	\$4,142	\$1,185	\$3	\$10,302	\$4,414	\$20,046

NOTE: Church licenses are included in above figures.

LICENSE SUMMARY

BY USE

Use	No.	Acreage	DHHL Annual Income
Cemetery	1	1	\$ 0
Churches	21	30	6,638
Community Service	8	11	3,486
Dump	1	7	1
Easements	66	3	3,374
Extraction Coral	3	85	**
Fire Stations	2	1	2
Forest/Conservation	1	12	1
Game Management	1	914	0
Office	2	1	\$ 6,537
Parks	5	29	5
School	1	24	0
Storage Tank	5		2
TOTAL	117	1,118	\$20,046

** Due to the fluctuating amounts based on the volume of extraction, the amount has been left out.

CHURCH LICENSE SUMMARY

	Hawaii	Kauai	Maui	Molokai	Oahu	Total
Number	5	1	—	11	4	21
Acreage	4	5	—	17	4	30
DHHL Annual Income	\$919	\$1,182	—	\$3,714	\$823	\$6,638

CHURCH LICENSES

ISLE/AREA	NO./LICENSEE/ADDRESS/	LOCATION/TMK	TERMS
HAWAII 1.000	74 Haili Congregational Church P.O. Box 1332 Hilo, Hawaii 96720	Waialea 2-1-20:07 12-31-82	21 years 01-01-78/12-31-98 @ \$217.80
HAWAII 1.000	75 St. Mary, Gate of Heaven Catholic Church 326 Desha Lane Hilo, Hawaii 96720	Waialea 2-1-21:14 12-31-82	21 years 01-01-78/12-31-98 @ \$217.80
HAWAII 500	76 Kauhane Hemolele Oka Malamalama 316 King St. Hilo, Hawaii 96720	Waialea 2-1-23:85 12-31-82	21 years 01-01-78/12-31-98 @ \$108.90
HAWAII 1.220	89 Church of Jesus Christ Latter Day Saints 226 Pua St. Hilo, Hawaii 96720	Waialea 2-1-20:73 06-30-83	21 years 07-01-78/06-30-99 @ \$265.72
HAWAII 500	90 Ka Hoku Ao Malamalama Church 2003 Aaniu Ln.—c/o: Rev. Charles M. Yabui Pearl City, Hawaii 96782	Waialea 2-1-23:62 06-30-83	21 years 07-01-78/06-30-99 @ \$108.90
KAUAI 5.430	77 Lihue First Church P.O. Box 1812 Lihue, Hawaii 96766	Anahola 4-8-07:20 03-31-83	21 years 04-01-78/03-31-99 @ \$1,182.65
MOLOKAI 2.489	70 Kalaikamanu Hou Congregational Church P.O. Box 606 Kaunakakai, Hawaii 96748	Kalamaula 5-2-09:13 12-31-82	21 years 01-01-78/12-31-98 @ \$542.10
MOLOKAI 344	71 Jerusalima Pomaikai Church P.O. Box 512 Kaunakakai, Hawaii 96748	Kalamaula 5-2-09:27 12-31-82	21 years 01-01-78/12-31-98 @ \$75.14
MOLOKAI 4.190	72 Church of Jesus Christ Latter Day Saints Hoolehua, Hawaii 96729	Hoolehua/Palaau 5-2-23:07 12-31-82	21 years 01-01-78/12-31-98 @ \$912.50
MOLOKAI 546	78 Watch Tower Bible & Tract Society P.O. Box 44 Kaunakakai, Hawaii 96748	Kalamaula 5-2-09:20 06-30-83	21 years 07-01-78/06-30-99 @ \$118.92
MOLOKAI 1.518	79 Molokai Church of God P.O. Box 866 Aiea, Hawaii 96701	Kalamaula 5-2-09:22 & 28 06-30-83	21 years 11-19-81/06-30-99 @ \$330.62
MOLOKAI 551	80 Kahu Alakai of the Hoomano Naaue Church General Delivery Kaunakakai, Hawaii 96748	Kalamaula 5-2-09:24 (P) 06-30-83	21 years 07-01-78/06-30-99 @ \$175.33
MOLOKAI 551	81 Ka Hale Laa O: Jerusalem Hou Church P.O. Box 116 Kaunakakai, Hawaii 96748	Kalamaula 5-2-09:24 & 25 06-30-83	21 years 07-01-78/06-30-99 @ \$128.06
MOLOKAI 3.222	82 Church of Jesus Christ Latter Day Saints P.O. Box 233 Kaunakakai, Hawaii 96748	Kalamaula 5-2-09:29 06-30-83	21 years 07-01-78/06-30-99 @ \$701.75
MOLOKAI 850	83 Sacred Hearts Catholic Church P.O. Box 238 Honolulu, Hawaii 96813	Hoolehua/Palaau 5-2-07:46 06-30-83	21 years 07-01-78/06-30-99 @ \$185.13
MOLOKAI 1.600	84 Hoolehua Congregational Church United Church of Christ P.O. Box 196 Hoolehua, Hawaii 96729	Hoolehua/Palaau 5-2-15:45 06-30-83	21 years 07-01-78/06-30-99 @ \$348.48
MOLOKAI 899	85 The Episcopal Church in Hawaii Queen Emma Square Honolulu, Hawaii 96813	Hoolehua/Palaau 5-2-15:47 & 32 (P) 06-30-83	21 years 07-01-78/06-30-99 @ \$195.80

ISL/AREA	NO./LICENSEE/ADDRESS	LOCATION/TMK	TERMS
OAHU 1.49	73 Nanakuli Door of Faith Church 89-040 Haleakala Avenue Waianae, Hawaii 96792	Nanakuli 8-9-02:44 12-31-82	21 years 01-01-78/12-31-98 @ \$324.52
OAHU .420	86 Church of Jesus Christ Latter Day Saints 41-126 Hoopulapula St. Waimanalo, Hawaii 96795	Waimanalo 4-1-21:22 06-30-83	21 years 07-01-78/06-30-99 @ \$91.48
OAHU .860	87 St. Rita's Catholic Church 89-318 Farrington Hwy. Waianae, Hawaii 96792	Nanakuli 8-9-05:01 06-30-83	21 years 07-01-78/06-30-99 @ \$187.30
OAHU 1.01	88 Nanaikapono Protestant Church 89-235 Pua Avenue Waianae, Hawaii 96792	Nanakuli 8-9-05:17 06-30-83	21 years 07-01-78/06-30-99 @ \$219.98

LICENSES

ISL/ACS	#/USE	LICENSEE/ADDRESS	LOCATION/TMK	TERMS	REMARKS
HAWAII 6.641	006 Parks	County of Hawaii 25 Aupuni Street Hilo, Hawaii 96720	Panaewa 2-2-59:11	21 years 10/14/75 (Pend.)/10-13-96 @ \$1.00	Panaewa Park
HAWAII	023 Waterline	Board of Water Supply 25 Aupuni Street Hilo, Hawaii 96720	Waialae 2-2-60:09 & 15	21 years 04-06-73/04-05-94 @ \$1.00 for term	Water pipelines within lots- 10 ft. wide
HAWAII	026 Easement	Hawaiian Telephone Co. P.O. Box 2200 Honolulu, Hawaii 96805	Pauahi 6-2-01:12 (P)	21 years 11-17-69/11-16-90 @ \$1.00 for term	Right-of-Ways Poles and lines
HAWAII	027 Water Storage	Dept. of Water Supply 25 Aupuni Street Hilo, Hawaii 96720	Waimea/Puukapu 6-4-03:69 (P)	21 years 02-12-74/02-11-95 @ \$1.00 for term	20,000-gallon water tank site
HAWAII 4.807	044 Parks	County of Hawaii 25 Aupuni Street Hilo, Hawaii 96720	Keaukaha 2-1-23:120	21 years 08-03-76/08-02-97 @ \$1.00	Hualani Park Kawanakoa Hall
HAWAII	046 Eas/Roads	Federal Aviation Admin. P.O. Box 50109 Honolulu, Hawaii 96850	Waialae 2-1-13:01 (P)	3 years 07-01-79/06-30-82 @ \$200.00	Roadway to middle marker site - Hilo Airport
HAWAII	060 Waterline	Dept. of Water Supply 25 Aupuni Street Hilo, Hawaii 96720	Waialae 2-1-13:12 (P) 2-1-25: Various (P)	Perpetual or termina- tion of use 01-05-78 Gratis	Water service line to drag strip and rec. complex as well as DHHL Panaewa farm lots
HAWAII	092 Drain	Dept. of Public Works 25 Aupuni Street Hilo, Hawaii 96720	Panaewa 2-2-47:01 (P)	Perpetual or termina- tion of use 03-09-78 Gratis	Drain Easement
HAWAII	095 Easement	Hawaii Electric Light Co., Inc. P.O. Box 1027 Hilo, Hawaii 96720	Kaunakakai 6-1-01:03 (P) & 16 (P) 6-1-05:08 (P) 6-1-06:10 (P) & 11 (P)	21 years 02-28-74/02-27-95 @ \$1.00	Pole and powerlines
HAWAII	098 Easement	Hawaii Electric Light Company P.O. Box 1027 Hilo, Hawaii 96720	Kaunakakai 6-2-01:12 (P)	21 years 01-26-78/01-25-99 @ \$1.00	Poles and powerlines
HAWAII	099 Waterline	Dept. of Water Supply— County of Hawaii 25 Aupuni Street Hilo, Hawaii 96720	Kamoku/Kapulena 4-7-07:05 (P) & 25 (P)	21 years 12-16-77/12-15-98 @ \$1.00	Waterline Easement
HAWAII	101 Waterline	William Kaluhikaua 40 Pua Avenue Hilo, Hawaii 96720	Keaukaha 2-1-20:61 (P)	10 years 05-26-78/05-25-88 Gratis	Waterline easement to homestead
HAWAII	102 Waterline	Dept. of Water Supply 25 Aupuni Street Hilo, Hawaii 96720	Panaewa 2-1-25:89 (P)	Perpetual or Termina- tion of use Document not executed Gratis	Waterline Easement
HAWAII	104 Eas/Roads	U.S. Army (Corp. of Engineers) Building 230 Fort Shafter, Hawaii 96858	Pauahi 6-2-01:12 (P)	4 years 08-25-78/12-31-82 Gratis	Right-of-Way for tracked vehicles
HAWAII	107 Drain	Dept. of Public Works 25 Aupuni Street Hilo, Hawaii 96720	Panaewa 2-1-25: Various (P)	10 years 01-01-76/12-31-85 @ \$1.00	Noted for land exchange Waialae-Uka flood control
HAWAII	111 Hist. Site	Big Island Resource & Development Council P.O. Box 915 Hilo, Hawaii 96720	Kamaka Puuoa 9-3-01:03 (P)	21 years 01-26-79/01-25-00 @ \$1.00	National Historic Plaque Marker Site

ISL/ACS	#/USE	LICENSEE/ADDRESS	LOCATION/TMK	TERMS	REMARKS
HAWAII	113 Easement	Hawaiian Telephone Co. P.O. Box 2200 Honolulu, Hawaii 96805	Pauahi 6-2-01:04 (P)	21 years 10-01-79/09-30-2000 @ \$1.00	
HAWAII	114 Easement	Hawaii Electric Light Co., Inc. P.O. Box 1027 Hilo, Hawaii 96720	Kawaihae 6-1-06:08 (P)	21 years 06-29-79/06-28-2000 @ \$1.00	
HAWAII	117 Easement	Hawaii Electric Light Co., Inc. P.O. Box 1027 Hilo, Hawaii 96720	Waimea/Puukapu 6-1-01:02 (P) & 03 (P) 6-2-01:12 (P)	21 years 12-01-79/11-31-2000 \$5.05	
HAWAII	118 Easement	Hawaii Electric Light Company, Inc. P.O. Box 1027 Hilo, Hawaii 96720	Keaukaha 2-1-23:110 (P)	21 years 10-01-79/10-31-2000 @ \$1.00	
HAWAII	127 Water Storage	Dept. of Water Supply— County of Hawaii P.O. Box 1820 Hilo, Hawaii 96720	Nienie 4-6-12:04 (P)	21 years 05-01-81/04-30-02 @ \$1.00	
HAWAII	130 Easement	Hawaiian Telephone & Hawaii Electric Light Co.	Kamoku 6-4-03: Various (P) 4-7-07: Various (P)	21 years 05-01-82/04-30-02 @ \$1.00	
HAWAII	134 Waterline	Dept. of Water Supply— County of Hawaii P.O. Box 1820 Hilo, Hawaii 96720	Waimea/Puukapu 6-4-04: Various (P)	21 years 07-30-81/07-29-02 @ \$1.00	
HAWAII	139 Waterline	Dept. of Water Supply— County of Hawaii P.O. Box 1820 Hilo, Hawaii 96720	Panaewa (P) 2-1-12:12 2-1-25: Various (P) 2-2-61: Various (P)	21 years 12-17-81/12-16-02 @ \$1.00	
HAWAII	142 Eas/Roads	W.H. Shipman, Ltd. P.O. Box 950 Keeau, Hawaii 96749	Humuula 3-8-01:02 (P)	Perpetual w/Reversionary Clause 07-01-82 \$3,000.00—one time payment	
HAWAII	143 Waterline	Javer Borden 96 Hale Manu Drive Hilo, Hawaii 96720	Panaewa (P) 2-1-25:122 (P) & 123 (P)	5 years 04-31-87 @ \$1.00	
KAUAI 5.528	007 Beach Reserve	County of Kauai 4396 Rice Street Lihue, Hawaii 96766	Anahola 4-8-14:03	21 years 02-09-76/02-08-97 @ \$1.00	Anahola Beach Park: Documents not returned by County of Kauai per resolution of litigation
KAUAI	049 Easement	Kauai Electric Company P.O. Box 278 Elecic, Hawaii 96705	Kekaha 1-3-02:00 (Within Roadway)	21 years 09-24-76/09-23-97 @ \$1.00	Pole and powerline easement
KAUAI	055 Easement	Kauai Electric Company P.O. Box 278 Elecic, Hawaii 96705	Anahola 4-8-03: Various (P)	21 years 01-28-77/01-27-98 @ \$1.00	Pole and powerlines: File Plan 1518
KAUAI 082	096 Eas/Roads Utility	J. Rochelle Karter & Denise Jewekes 5634 Koku Road Kapaa, Hawaii 96703	Anahola 4-8-07:17	Perpetual or termina- tion of use 03-23-78 \$890.00 for term Pd. '78	Access and Utility easement
KAUAI	097 Eas/Roads Utility	Vernon K. & Emmaline White P.O. Box 155 Anahola, Hawaii 96703	Anahola 4-8-11:16	Perpetual or termina- tion of use 04-14-78 \$260.00 for term Pd. '78	Access and Utility easement
MAUI 4.743	005 Parks	County of Maui 200 South High Street Wailuku, Hawaii 96793	Paukukalo 3-3-05:86	21 years 05-05-75/05-04-96 @ \$1.00	Paukukalo Public Park
MAUI 1.630	040 Comm. Cnt.	Paukukalo Hawaiian Homes Commission Assn. 773 Kawanakoa Street Wailuku Hawaii 96793	Paukukalo 3-3-05:87	21 years 11-10-71/11-09-92 @ \$1.00	Recreation Center
MAUI	100 Utility	Maui Electric Company 210 Kamehameha Avenue Kahului, Hawaii 96732	Kula 2-2-02:14	Perpetual or termina- tion of use 05-26-78 \$279.00 for term Pd. '78	Pole and powerline easement
MAUI 274	116 Sewerline	Dept. of Public Works 200 High Street Wailuku, Hawaii 96793	Paukukalo 3-3-05:03	21 years 11-01-79/10-31-01 @ \$1.00	Paukukalo Sewer
MAUI	122 Quarry	Dept. of Public Works— County of Maui 200 South High Street Wailuku, Hawaii 96793	Kahikinui 1-9-01:03	1 year 12-1-81/11-30-82 @ \$1.75 per cubic yard	

ISL/ACS	#/USE	LICENSEE/ADDRESS	LOCATION/TMK	TERMS	REMARKS
MOLOKAI .476	002 Pub. Serv.	County of Maui 200 South High Street Wailuku, Hawaii 96793	Hoolchua/Palaau 5-2-15:51	21 years 10-18-74/10-17-95 @ \$1.00	Hoolchua Fire Substation
MOLOKAI 1.048	009 Cemetery	County of Maui 200 South High Street Wailuku, Hawaii 96793	Hoolchua/Palaau 5-2-17:22	Open 11-03-51 may be terminated at the end of any calendar month Gratis	Molokai Veterans Cemetery
MOLOKAI 24.194	010 Schools	Dept. of Education P.O. Box 158 Hoolchua, Hawaii 96729	Hoolchua/Palaau 5-2-15:02 & 46	6 months revocable 11-06-51 Gratis	Molokai High School
MOLOKAI	024 Utility	Hawaiian Telephone Company P.O. Box 2200 Honolulu, Hawaii 96805	Kalamaula 5-2-08: Various (P)	21 years 12-16-64/12-15-85 @ \$1.00	Telephone easement
MOLOKAI 913.524	042 Game Mg. Com. Past.	Dept. of Land & Nat. Resources and F & G Management P.O. Box 342 Kaunakakai, Hawaii 96748	Hoolchua/Palaau 5-2-01:01 5-4-03:03 5-2-10:01 5-2-11:01 & 04	21 years 09-12-67/09-11-88 Gratis	Game Management Area
MOLOKAI 1.148	045 Comm. Cnt.	Liliuokalani Trust 1300 Halona Street Honolulu, Hawaii 96817	Kalamaula 5-2-09:30	21 years 05-25-71/05-24-92 @ \$1.00	Child Welfare Center
MOLOKAI 1.000	058 Bus.	First Hawaiian Homes Federal Credit Union Hoolchua, Hawaii 96729	Hoolchua/Palaau 5-2-23:01	21 years 07-11-77/07-10-98 @ \$1.00	Federal Credit Union
MOLOKAI .064	064 Waterline	Na Hua Ai Farms P.O. Box 165 Hoolchua, Hawaii 96729	Hoolchua/Palaau 5-2-01:05	25 years or termina- tion of GL-185 09-19-77/09-18-02 Gratis	Waterline easement
MOLOKAI 6.924	066 Dump Site	County of Maui Kaunakakai, Hawaii 96748	Kalamaula 5-2-11:21	21 years 04-25-69/04-24-90 @ \$1.00	County Dump Site
MOLOKAI	109 Waterline	Dept. of Land & Nat. Resources & Molokai Irrigation Project 1151 Punchbowl Street Honolulu, Hawaii 96813	Hoolchua/Palaau 5-2-04: Various (P)	Perpetual or termina- tion of use 10-01-78 Gratis	Waterline easement
MOLOKAI	110 Easement	Molokai Electric P.O. Box 378 Kaunakakai, Hawaii 96748	Hoolchua/Palaau 5-2-15:01 (P), 02 (P), & 51 (P)	21 years 12-15-78/12-14-99 @ \$1.00	Power easement to Fire Dept., Rec/Com Cntr. & Molokai High School
MOLOKAI .099	125 Commercial	DAGS P.O. Box 119 Honolulu, Hawaii 96810	Hoolchua 5-2-15:01 (P)	3 yrs. 2-15-80/2-14-83 @ \$6,536.64	Unexecuted
MOLOKAI 12.000	132 Forest/Con.	Dept. of Land & Natural Resources—Div. of Forestry P.O. Box 621 Honolulu, Hawaii 96809	Kamiloloa 5-4-03:03 (P)	5 years 05-01-81/04-30-86 @ \$1.00	Protection of Endangered Plant Species
MOLOKAI 6.993	133 Comm. Cnt.	Molokai Recreational Center— County of Maui 200 South High St. Wailuku, Hawaii 96793	Hoolchua 5-2-15:01 (P)	Unexecuted 21 years @ \$1.00	
MOLOKAI 0.162	140 Easement	Molokai Electric Co., Ltd. P.O. Box 378 Kaunakakai, Hawaii 96748	Kalamaula 5-2-15:01 (P)	21 years 01-01-67/12-31-88 \$44.28	
OAHU 0.712	003	Nanakuli Homesteaders' Assn., Inc. 89-188 Farrington Highway Nanakuli, Hawaii 96792	Nanakuli 8-9-05:14	21 years 12-18-74/12-17-95 @ \$1.00	Building B
OAHU	004 Health Service	Department of Health— State of Hawaii 741-A Sunset Avenue Honolulu, Hawaii 96816	Nanakuli 8-9-05:14	21 years 12-18-74/12-17-95 @ \$1.00	Building A
OAHU	008 Easement	U.S. Army — Pacific Ocean Div. Corps of Engineers, Bldg. 230 Fort Shafter, Hawaii 96858	Nanakuli 8-9-07:01 (P), 03 & 09	3 years 06-01-80/05-31-83 \$76.00	Communications cable easement
OAHU	017 Easement	HECO P.O. Box 2750 Honolulu, Hawaii 96803	Waianae 8-5-04:59 (P) 8-6-03:27 (P)	21 years 09-02-71/09-01-92 @ \$1.00	Right-of-way for poles and powerlines
OAHU	020 Easement	HECO P.O. Box 2750 Honolulu, Hawaii 96803	Nanakuli 9-9-09: Various (P)	21 years 05-20-68/05-19-89 @ \$1.00 for term	Right-of-way for underground powerlines
OAHU	021 Easement	HECO and Hawaiian Telephone P.O. Box 2750 Honolulu, Hawaii 96803	Papahalea/Kewalo 2-2-15:29 (P)	20 years 12-15-64/12-15-84 @ \$1.00 for term	Right-of-way for poles and powerlines

ISL/ACS	#/USE	LICENSEE/ADDRESS	LOCATION/TMK	TERMS	REMARKS
OAHU	022 Waterline	Board of Water Supply P.O. Box 3410 Honolulu, Hawaii 96801	Nanakuli 8-9-02, 8-9-03, 8-9-04, 8-9-05, 8-9-06, & 8-9-09	21 Years 02-16-71/02-15-92 \$1.00 for term	Water pipelines within roads
OAHU	030 Easement	GASCO P.O. Box 3379 Honolulu, Hawaii 96801	Papakolea/Kewalo 2-4-41:27 (P)	20 years 09-09-68/09-08-88 @ \$1.00 for term	Gas line easement
OAHU	031 Easement	HECO and Hawaiian Telephone P.O. Box 2750 Honolulu, Hawaii 96803	Papakolea/Kewalo 2-2-15:65 (P)	21 years 08-21-74/08-20-95 \$1.00 for term	Power and communications easement
OAHU	032 Easement	Hawaiian Electric Company P.O. Box 2750 Honolulu, Hawaii 96803	Waimanalo 4-1-30:24 (P), 30 (P), & 36 (P) 4-1-31:11 (P) & 36 (P)	21 years 12-03-71/12-02-92 \$1.00 for term	Underground lines
OAHU	033 Easement	HECO and Hawaiian Telephone P.O. Box 2750 Honolulu, Hawaii 96803	Waimanalo 4-1-29: Various (P) 4-1-16: Various (P)	21 years 05-18-66/05-17-87 \$1.00 for term	Right-of-Way for powerlines
OAHU	035 Easement	Hawaiian Electric Company P.O. Box 2750 Honolulu, Hawaii 96803	Waimanalo 4-1-30: Various (P) 4-1-31: Various (P)	21 years 12-19-73/12-18-94 @ \$1.00	Right-of-Way for underground lines
OAHU	036 Sewerline	Dept. of Public Works 650 South King Street, 11th Fl. Honolulu, Hawaii 96813	Waimanalo 4-1-29: Various (P)	21 years 07-26-67/07-25-88 \$1.00 for term	Right-of-Way for sewers
OAHU	037 Drain	Dept. of Public Works C & C of Honolulu 650 South King St. Honolulu, Hawaii 96813	Waimanalo 4-1-29: Various (P) 4-1-16:27 (P)	21 years 07-26-67/07-25-88 \$1.00 for term	Right-of-Way for storm drains
OAHU	038 Easement	HECO and Hawaiian Telephone Co. P.O. Box 2750 Honolulu, Hawaii 96803	Waimanalo 4-1-03: Various (P)	21 years 07-23-80/07-22-01 \$1.00 for term	Right-of-Way for powerlines
OAHU	039 Waterline	Board of Water Supply P.O. Box 3410 Honolulu, Hawaii 96801	Waimanalo 4-1-08: Various (P)	21 years 08-30-66/08-29-87 \$1.00 for term	10 ft. wide waterline easement
OAHU .880	047 Communications Facility	Federal Aviation Administration P.O. Box 50109 Honolulu, Hawaii 96850	Waimanalo 4-1-14:15 & 16		
OAHU	048 Easement	HECO P.O. Box 2750 Honolulu, Hawaii 96803	Nanakuli 8-9-10: Various, 95,98,107,93, 67, 48 & 38	21 years 10-29-76/10-28-97 @ \$1.00 for term	Easements for underground powerlines
OAHU	051 Drain	Board of Water Supply P.O. Box 3410 Honolulu, Hawaii 96801	Nanakuli 8-9-03: Various (P)	21 years 06-03-69/06-02-90 Gratis	Waterline and drainage casements
OAHU	053 Easement	Cablevision, Inc. 87-680 Farrington Highway Waianae, Hawaii 96792	Nanakuli 8-9-10: Various (P)	21 years 03-18-77/03-17-98 \$1.00 for term	Television cable lines
OAHU	054 Easement	Cablevision, Inc. 87-680 Farrington Highway Waianae, Hawaii 96792	Waianae 8-5-04: Various (P) 8-5-31: Various (P)	21 years 04-29-77/04-28-98 \$1.00 for term	Television cable lines
OAHU	056 Easement	Hawaiian Telephone Company P.O. Box 2200 Honolulu, Hawaii 96805	Nanakuli 8-9-10: Various (P)	21 years 03-18-77/03-17-98 \$1.00 for term	Underground communications cable
OAHU	057 Easement	Hawaiian Telephone Company P.O. Box 2200 Honolulu, Hawaii 96805	Waianae 8-5-04: Various (P) 8-5-30: Various (P) 8-5-31: Various (P)	21 years 04-29-77/04-28-98 \$1.00 for term	Underground communications cable
OAHU .124	059 Storage Areas	GASCO P.O. Box 3379 Honolulu, Hawaii 96842	Waimanalo 4-1-03:29	21 years 08-27-65/08-26-86 @ \$1.00	Gas Tank Site
OAHU	061 Easement	HECO P.O. Box 2750 Honolulu, Hawaii 96803	Waianae 8-5-04: Various (P) 8-5-30: Various (P) 8-5-29: Various (P)	21 years 04-29-77/04-28-98 \$1.00 for term	Underground line easements
OAHU	062 Drain	Dept. of Public Works C & C of Honolulu 650 South King Street Honolulu, Hawaii 96813	Nanakuli 8-9-10: Various (P) & 26 (P)	Perpetual or termina- tion of use 07-29-77 Gratis	Drain easement
OAHU	063 Drain	Dept. of Public Works C & C of Honolulu 650 South King Street Honolulu, Hawaii 96813	Waianae 8-5-04: Various (P) 8-5-30:06 (P), & 121 (P)	Perpetual or termina- tion of use 07-29-77 Gratis	Drain easement
OAHU	068 Easement	Hawaiian Telephone Company P.O. Box 2200 Honolulu, Hawaii 96805	Nanakuli 8-9-07: (P)	Perpetual or termina- tion of use 08-26-77 \$1.00 for term	Communication lines
OAHU .463	069 Comm. Cnt.	Progressive Neighborhood Program 1164 Bishop Street Honolulu, Hawaii 96813	Nanakuli 8-9-05:22	3 years 12-01-80/11-30-83 @ \$1,740.00	Community Service Center

ISL/ACS	#/USE	LICENSEE/ADDRESS	LOCATION/TMK	TERMS	REMARKS
OAHU	093 Sewerline	Dept. of Public Works — C&C of Honolulu 650 South King Street Honolulu, Hawaii 96813	Papakolea/Kewalo 2-2-15 2-4-41 & 42 2-5-21 & 22	65 yrs. or until termina- tion of use 08-29-75 \$1.00 for term	Sewer lines
OAHU	094 Drain	Dept. of Public Works — C & C of Honolulu 650 South King Street Honolulu, Hawaii 96813	Papakolea/Kewalo 2-4-41 & 42 2-5-21	65 yrs. or until utili- zation ceases 08-29-75 \$1.00 for term	Drainage easements
OAHU 33.34	101-A Commer.	Pacific Concrete and Rock Co. 2344 Pahounui Drive Honolulu, Hawaii 96189	Waimanalo 4-1-08:03	20 years 07-01-68/06-30-88 Prevailing royalty rate for carbonate 7-1-78 Prevailing royalty rate for carbonate. 7/1/83 prevailing rate for carbonate (no payments in 78)	
OAHU	103 Com/Radar	Hawaiian Telephone Company P.O. Box 2200 Honolulu, Hawaii 96805	Nanakuli 8-9-05:11 (P), 17 (P), 19 (P), & 98 (P)	21 years 06-01-78/05-31-99 @ \$1.00	Microwave-airways easement
OAHU	105 Drain	Dept. of Public Works — C & C of Honolulu 650 South King Street Honolulu, Hawaii 96813	Nanakuli 8-9-07: Various (P)	Perpetual or termina- tion of use 08-25-78 Gratis	Drainage easement
OAHU	106 Eas/Roads	Board of Water Supply P.O. Box 3410 Honolulu, Hawaii 96801	Papakolea/Kewalo 2-4-42:01 (P), & 34	21 years 08-25-78/08-24-99 @ \$1.00	Ingress egress over roadway lot
OAHU .483	108 Pub. Serv.	Fire Department 1455 South Beretania Street Honolulu, Hawaii 96814	Nanakuli 8-9-05:70	21 years 04-24-64/04-23-85 @ \$1.00	Nanakuli Fire Station
OAHU	112 Easement	Hawaiian Electric Company P.O. Box 2750 Honolulu, Hawaii 96803	Nanakuli 8-9-07: Various (P)	21 years 02-01-79/01-31-00 \$1.00 for term	Underground powerlines
OAHU 7.505	119 Parks	Dept. of Parks & Recreation — C & C of Honolulu 650 South King Street Honolulu, Hawaii 96813	Waianae 8-5-32:39	21 years 06-21-80/06-25-01	Kaupuni Park (Waianae Valley Park Site)
OAHU 0.463	121 Day Care	Child & Family Service 100 North Vineyard Blvd., Suite 20 Honolulu, Hawaii 96817	Nanakuli 8-9-05:22	3 years 12-01-80/11-30-83 \$1,740.00	
OAHU	124 Drain	Dept. of Public Works 650 South King Street Honolulu, Hawaii 96813	Waimanalo 4-1-08:79 (P)	21 years 03-25-81/03-24-02 Gratis	Waimanalo flood control channel.
OAHU	135 Drain	Dept. of Public Works — C & C of Honolulu 650 South King Street Honolulu, Hawaii 96813	Waianae 8-5-32: Various (P) 8-5-04:02 (P)	21 years 07-30-81 @ \$1.00	
OAHU 1.66	136 Reservoir	Board of Water Supply P.O. Box 3410 Honolulu, Hawaii 96801	Waianae 8-5-04:01 (P) & 52 (P)	21 years 08-27-81 @ \$1.00	Not executed
OAHU	137 Bikeways Eas.	Dept. of Public Works — C & C of Honolulu 650 South King Street Honolulu, Hawaii 96813	Waimanalo	21 years 10-29-81/10-28-2002 @ \$1.00	
OAHU	138 Water Storage	Board of Water Supply P.O. Box 3410 Honolulu, Hawaii 96801	Nanakuli 8-9-11:49	21 years 12-17-81/12-16-2002 @ \$1.00	Not executed
OAHU	144 Eas/Roads	Dept. of Public Works — C & C of Honolulu 650 South King Street Honolulu, Hawaii 96813	Nanakuli 8-9-06:A-U-2	21 years 6-26-82/6-25-2003 @ \$1.00	Not executed
OAHU 50.720	180 Commer.	Pacific Concrete and Rock Co. 2344 Pahounui Drive Honolulu, Hawaii 96819	Waimanalo 4-1-08:02	20 years 11-01-72/10-31-92 Prevailing royalty rate for calcium carbonate	Same as 101-A, but not less than 36¢ per ton

HAWAIIAN HOME LANDS REVOCABLE PERMIT SUMMARY

BY ISLAND

	Hawaii	Kauai	Maui	Molokai	Oahu	Total
Number	10	12	2	3	9	36
Acreage	15,252	334	191	94	33	15,904
DHHL Annual Income	\$84,355	\$14,755	\$874	\$1,445	\$24,582	\$126,011

REVOCABLE PERMIT SUMMARY

BY USE

Use	No.	Acreage	DHHL Annual Income
Agriculture	5	25	\$ 3,373
Cane	1	266	9,709
Churches	2	*	2,356
Commercial	3	3	13,215
Dairy	1	9	4,418
Parking Lot/Garden	2	*	2,730
Pasture	14	15,580	70,894
Public Service	4	5	11,813
Residence	3	9	5,460
Storage	1	7	2,043
GRAND TOTAL	36	15,904	\$126,011

*less than 1/2 acre

REVOCABLE PERMITS

ISLE/ AREA	#/USE	PERMITTEE	LOCATION	ANN. RENT/ DT. ISSUED
HAWAII 1,986	01 Commercial/Res	Masaru & Chitoshi Doi c/o: Doi Store Kawaihae, Hawaii 96743	Kawaihae 6-1-03:03, 19 & 20	\$11,432.00 06-01-77
HAWAII 4,955.120	08 Pasture	Richard Smart 700 Bishop St., Suite 609 Honolulu, Hawaii 96813	Waimea/Puukapu 6-4-04:09 & 10 6-5-01:11 & 19	\$31,610.00 07-01-77
HAWAII .230	10 Residence	Emilio Cabradilla c/o: Doi Store Kawaihae, Hawaii 96743	Kawaihae 6-1-03:17	\$1,560.00 07-01-77
HAWAII 2,674	16 Public Service	Fire Department 466 Kinohi St. Hilo, Hawaii 96720	Kawaihae 6-1-02:65	\$600.00 08-01-77
HAWAII .250	28 Parking Lot/Garden	Heinz Seifried & Karl Stelinger c/o Harbor Hut, P.O. Box 4960 Kawaihae, Hawaii 96743	Kawaihae 6-1-02:63 (P) & 65 (P)	\$2,580.00 11-01-78
HAWAII 10,289.740	32 Pasture	Kawaihae Ranch Ltd. 94-340 Depot Rd. Waipahu, Hawaii 96797	Kamaea Puuoa 9-3-01:02	\$35,040.00 04-01-79

ISLE/ AREA	#/USE	PERMITTEE	LOCATION	ANN. RENT/ DT. ISSUED
HAWAII 1.364	34 Public Service	Dept. of Commerce & Consumer Affairs for/ Hawaii Public Broadcasting Authority, 2350 Dole St. Honolulu, Hawaii 96822	Waikana 2-1-13:149 (P)	\$90.00 06-01-79
HAWAII .500	35 Commercial	Motorola, Inc. 663 Kakei St. Honolulu, Hawaii 96819	Waikana 2-1-13:149 (P)	\$720.00 06-01-79
HAWAII .044	38 Church	Kamuela Congregation of Jehovah's Witness, P.O. Box 1124 Kamuela, Hawaii 96743	Waimea/Puukapu 6-4-01:59 (P)	\$400.00 05-01-81
HAWAII .035	39 Public Service	Waimea Civitan Club c/o Richard Taka, P.O. Box 443 Kamuela, Hawaii 96743	Waimea/Puukapu 6-4-01:59 (P)	\$323.04 03-01-81
KAUAI 2.850	02 Pasture	Vernon White P.O. Box 155 Anahola, Hawaii 96703	Anahola 4-8-13:16	\$153.96 07-01-77
KAUAI 1.330	20 Pasture	Lorna Kauo Anahola, Hawaii 96703	Anahola 4-8-03:16	\$71.88 05-01-78
KAUAI 23.650	22 Pasture	Theodore Williams P.O. Box 187 Anahola, Hawaii 96703	Anahola 4-8-03:05	\$1,277.16 07-01-78
KAUAI 14.000	23 Agriculture	William Lemn P.O. Box 213 Anahola, Hawaii 96703	Anahola 4-8-03:28	\$1,638.00 07-01-78
KAUAI 1.323	25 Residence	Tsuru Yamamoto Anahola, Hawaii 96703	Anahola 4-8-10:06	\$420.00 10-01-78
KAUAI 10.340	27 Pasture	Emmaline White P.O. Box 155 Anahola, Hawaii 96703	Anahola 4-8-11:03 & 04	\$558.36 10-01-78
KAUAI 266.330	29 Cane	Lihue Plantation Co. c/o: Amfac, Inc., P.O. Box 3230 Honolulu, Hawaii 96801	Anahola 4-8-03:19, 20 & 21	\$9,709.00 12-01-80
KAUAI 3.313	45 Pasture	Solomon Lovell RR 1, Box 410 Kapaa, Hawaii 96746	Anahola 4-08-06:04	\$324.60 04-01-82
KAUAI 2.866	47 Pasture	Clay Keckona P.O. Box 135 Anahola, Hawaii 96703	Anahola 4-8-15:24, 25, & 26	\$154.80 04-15-82
KAUAI 2.654	48 Pasture	Gordon Rosa P.O. Box 381 Anahola, Hawaii 96703	Anahola 4-8-15:22	\$144.00 04-15-82
KAUAI 3.205	49 Pasture	Lynette Kauo Fernandez P.O. Box 72 Anahola, Hawaii 96703	Anahola 4-8-15:23	\$173.04 05-01-82
KAUAI 2.420	50 Pasture	James Oshita P.O. Box 123 Anahola, Hawaii 96703	Anahola 4-8-11:20 & 25	\$130.68 06-01-82
MAUI 129.000	30 Pasture	Haleakala Ranch Co. P.O. Box 428 Makawao, Hawaii 96768	Kahikinui 1-9-01:11	\$329.28 12-01-78
MAUI 62.000	46 Pasture	Haleakala Ranch Co. P.O. Box 428 Makawao, Hawaii 96768	Kahikinui 1-09-01:08	\$544.44 04-19-82
MOLOKAI .860	11 Commercial	Patricio Sanchez, Jr. c/o: Kalamaula Motors, Kaunakakai, Hawaii 96748	Kalamaula 5-2-08:107	\$1,062.93 08-01-77
MOLOKAI 91.616	14 Pasture	James F. Lindsey P.O. Box 153 Kaunakakai, Hawaii 96748	Hoolahua/Palaau 5-2-07:90	\$381.60 08-01-77
MOLOKAI 2.000	44 Agriculture	Na Hua Al Farms P.O. Box 165 Hoolahua, Hawaii 96729	Hoolahua 5-2-01:01 (P)	6 months gratis 05-01-82
OAHU 4.000	03 Agriculture	Hiromu Omura 86-369 Lualualei Hmstd. Rd. Waianae, Hawaii 96792	Lualualei 8-6-01:52	\$1,158.96 06-01-77
OAHU 7.000	04 Storage Areas	Lawrence Z. Agena 86-410 Halona Rd. Waianae, Hawaii 96792	Lualualei 8-6-01:51	\$2,043.00 06-01-77
OAHU 8.940	05 Dairy	Ernest M. Souza 86-347 Halona Rd. Waianae, Hawaii 96792	Lualualei 8-6-03:52	\$4,418.28 07-01-77

ISLE/ AREA	#/USE	PERMITTEE	LOCATION	ANN. RENT/ DT. ISSUED
OAHU 7.262	15 Residence	Roger & Nora James 41-170 Waikupanaha St. Waimanalo, Hawaii 96795	Waimanalo 4-1-08:02 (P)	\$3,480.00 06-01-77
OAHU 4.000	18 Agriculture	Waldron Henderson 41-124 Kulaiwi St. Waimanalo, Hawaii 96795	Waimanalo 4-1-08:51	\$336.00 01-01-78
OAHU .814	36 Public Service	Progressive Neighborhoods Program, 335 Merchant St., Rm. 103 Honolulu, Hawaii 96813	Lualualei 8-6-01:41	\$10,800.00 07-01-79
OAHU .510	37 Church	Hoomana Naauso O Hawaii 89-280 Farrington Hwy. Honolulu, Hawaii 96792	Nanakuli 8-9-05:06	\$1,956.00 09-01-80
OAHU .505	40 Agriculture	Rebecca Perkins 1666-D Kalanikaiki Walk	Waimanalo 4-01-08:77	\$240.00 07-01-81
OAHU .115	41 Garden	Mr. & Mrs. Daniel Kealoha 41-208 Nakini St. Waimanalo, Hawaii 96793	Waimanalo 4-1-08:01 (P)	\$150.00 09-01-81

HAWAIIAN HOME LANDS RIGHTS OF ENTRY SUMMARY BY ISLAND

	Hawaii	Kauai	Maui	Molokai	Oahu	Total
Number	14	2	—	4	—	20
Acreage	67	13	—	10	—	90
DHHL Annual Income	\$750	—	—	\$400	—	\$1,150

Right of Entry Summary BY USE

Use	No.	Acreage	DHHL Annual Income
Cemetery	1	1	\$ 200
Commercial	1	1	200
Community Center	1	7	
Easements	11	—	
Parks	1	14	
Reservoir	1	67	
Survey, Construction	4	—	750
GRAND TOTAL	20	90	\$1,150

RIGHT OF ENTRY PERMITS

ISL/AC	#/USE	PERMITTEE/ADDRESS	LOCATION/TMK	ANNUAL RENT	TERMS	REMARKS
HAWAII	02 Easement	Hawaiian Telephone Co. P.O. Box 2200 Honolulu, Hawaii 96841	Kamoku 4-7-7: Various	03-06-72 until execution of easement		
HAWAII	03 Easement	Hilo Electric P.O. Box 1027 Hilo, Hawaii 96720	Kamoa Puueo 9-3-01:02 (P)	12-04-61 until execution of easement		
HAWAII	06 Waterline	Dept. of Land & Natural Resources 1151 Punchbowl St., Rm. 130 Honolulu, Hawaii 96813	Nienie 4-6-12:17 (P) 4-7-07:05 (P)	Perpetual 07-30-76	Gratis	
HAWAII	30 Utility	Hawaii Electric Light Co., Inc. P.O. Box 1027 Hilo, Hawaii 96720	Makuu 1-5-10:04 (P) & 17 (P)	07-29-77 until utility easement granted	Gratis	
HAWAII	35 Waterline	Dept. of Water supply 25 Aupuni St. Hilo, Hawaii 96720	Kamoa Puueo 9-3-01:03 (P) & 11 (P)	7 months 02-01-78/08-31-78		
HAWAII	42 Constr.	Dept. of Army (Corps of Engineers) Bldg. 230 Ft. Shafter, Hawaii 96858	Waimea/Puukapu 6-4-03:15 (P)	4 years 08-31-78/08-30-82	Gratis	
HAWAII	44 Eas/Roads	Hawaii Community College 2444 Dole St. Honolulu, Hawaii 96822	Waiakea 2-2-60:26 (P)	10 years 01-01-76/12-31-85 \$2,000.00 for term pd. '82		
HAWAII	48 Easement	Hawaiian Telephone Co. P.O. Box 4249 Hilo, Hawaii 96720	Waimea/Puukapu 6-4-08:45 (P) 6-4-04: (P)	12-01-79 until execution of easement	Gratis	
HAWAII	50 Survey	Director of Transportation 869 Punchbowl St. Honolulu, Hawaii 96813	Kawaihae 6-1-03:16 6-1-06:1, 2 & 3 6-4-03:26 6-4-04:1, 13 & 14	2 years 08-01-80/02-28-82		
HAWAII	51 Easement	Hawaiian Telephone & HECO P.O. Box 2200 Honolulu, Hawaii 96841	Waimea/Puukapu 6-4-04: Various	02-09-81 until execution of easement license		Joint overhead utility pole and line system
HAWAII	53 Easement	Hawaiian Telephone & HECO P.O. Box 2200 Honolulu, Hawaii 96841	Panewa 2-2-61	02-09-81 until execution of easement license		Installation of anchors and overhead lines
HAWAII 66.910	57 Puu Puuhu Reservoir	Dept. of Land & Natural Resources P.O. Box 621 Honolulu, Hawaii 96809	Waimea/Puukapu 6-4-03:15	21 years 12-01-81/11-30-02		Use of reservoir
HAWAII	60 Historic Site	Corps of Engineers c/o Pacific Ocean Division, Bldg. 230 Ft. Shafter, Hawaii 96858	Kamoa Puueo 9-3-01:03	1 year 02-01-82/01-31-83		The right to conduct archaeological and cultural studies in the Kaulana Bay area
HAWAII	61 Survey	Space Services, Inc. 900 Fort St. Mall, Pioneer Plaza, Ste. 1060 Honolulu, Hawaii 96813	Kamoa Puueo 9-3-01:3 & 11	1 month @ \$750.00 04-15-82/06-15-82		Feasibility study
KAUAI	33 Drain	County of Kauai 4396 Rice St. Lihue, Kauai 96766	Anahola 4-8-07:01 4-8-10:06 & 10	10 years 11-18-77/11-17-87	Gratis	
KAUAI 13.475	58 Parks	County of Kauai 4396 Rice Street Lihue, Hawaii 96766	Anahola 4-8-07:01 4-8-14:06 4-8-15:48 (P)	12-17-81 until execution of license	\$1.00 for term	Operation & maintenance of parks
MOLOKAI 1.180	13 Bus.	Halau O'Kawanakanon Eieu Ellma P.O. Box 212 Hoolehua, Molokai 96729	Kalamaula 5-2-09:18 (P)	3 years 08-01-79/07-31-82	\$200.00	
MOLOKAI 6.993	28 Comm.Cnt.	County of Maui High & Aupuni St. Wailuku, Maui 96793	Hoolehua/Palaau 5-2-15:01 (P)	08-04-77 until execution of licenses	Gratis	
MOLOKAI 1.354	32 Cemetery	County of Maui High & Aupuni St. Wailuku, Hawaii 96793	Kapaakea 5-4-03:12 (P)	1 year 10-01-77 until land exchange is made	\$200.00	
MOLOKAI	46 Easement	Molokai Electric Co. P.O. Box 378 Kaunakakai, Hawaii 96784	Kalamaula 5-2-10:03 (P)	1 year 11-01-79/10-31-80 until execution of license	Gratis	

SUBLEASES

LESSEE	AREA	ANNUAL LEASE RENT	SUBLESSEE	RENT	AREA	DATE OF CONSENT
Tongg Ranch #105	1,527.920 Acres	\$ 5,892.00	Costa, Wilbert & Norma	\$ 491.00 mo.	1,527.920 Acres	7/18/80
Hawaii Anthurium Growers Cooperative #109	1.245 Acres	\$ 5,206.20	Chaddy's Drive In Al's Electronics	\$ 615.00 mo. \$ 875.00 mo.	7,050 sq. ft. 3,600 sq. ft.	9/30/77 12/5/79
Koreaki Iwashita Contracting Co. #112	.465 Acres	\$ 1,572.00	Aloha Custom Cyclery	\$ 370.00 mo.	—	—
R & J Steel, Inc. #113	.928 Acres	\$ 5,000.00	The Burke Co. Linco Construction Co.	\$ 1,280.00 mo. \$ 2,250.00 mo.	7,842 sq. ft. 2,250 sq. ft.	— —
#146	.930 Acres	\$ 4,082.00	Autopro, Inc. M.S. Auto Painting & Body Repair T.I. Service Precision Auto	\$ 650.00 mo. \$ 820.00 mo. \$ 300.00 mo. \$ 465.00 mo.	— 3,168 sq. ft. 2,400 sq. ft. —	7/2/79 3/1/79 3/1/79 —
McCabe Paving Co. #115	.930 Acres	\$ 3,144.00	Lohe Kaaloa Masonry Alex M. Ohara, General Contracting	\$ 300.00 mo. \$ 300.00 mo.	3,280 sq. ft. 3,280 sq. ft.	— —
Oshiro Contracting, Inc. #127	.463 Acres	\$ 1,754.00	Sun Ventures Tom Moore Tax Service Data, Inc. Raymond Shimizu Moore Business Forms Cabinets by Steve Steel Fabrication Hawaii Ameritone Hawaii Natural Pacific	\$ 150.00 mo. \$ 300.00 mo. \$ 135.00 mo. \$ 100.00 mo. \$ 180.00 mo. \$ 320.00 mo. \$ 180.00 mo. \$ 245.00 mo. \$ 700.00 mo.	— 600 sq. ft. 500 sq. ft. 200 sq. ft. 500 sq. ft. 2,300 sq. ft. 1,000 sq. ft. 600 sq. ft. 2,800 sq. ft.	— — 3/1/79 3/1/79 — 3/1/79 — 3/1/79 —
A & A Hawaii, Inc. #140	.742 Acres	\$ 3,102.00	Hardward Hawaii Marukai, Corp.	\$ 1,425.00 mo. \$ 1,575.00 mo.	7,500 sq. ft. 7,500 sq. ft.	— —
#171	.370 Acres	\$ 2,322.00	Stan's Auto Body Repair Economy Printers	\$ 792.00 mo. \$ 396.00 mo.	3,600 sq. ft. 1,800 sq. ft.	— —
#173	.432 Acres	\$ 2,257.00	Allied Machinery	\$ 975.00 mo.	7,500 sq. ft.	—
M. Sonomura Contracting Co., Inc. #143	4.880 Acres	\$ 7,527.00	Ono-Pac Corp. Auto Parts, Inc.	\$ 2,000.00 mo. \$ 1,500.00 mo.	12,000 sq. ft. 8,000 sq. ft.	— —
#158	.930 Acres	\$ 4,203.90	Hilo Soda Works Doug's Auto Machine Alejandro's Repair Shop W.A. Hirai & Assoc. Bob's Wheel Alignment Custom Sheet Metal, Inc. Bob's Tire Co. Hilo Steel Co.	\$ 500.00 mo. \$ 750.00 mo. \$ 375.00 mo. \$ 750.00 mo. \$ 796.88 mo. \$ 637.50 mo. \$ 1,587.28 mo. \$ 1,897.44 mo.	2,500 sq. ft. 4,687 sq. ft. 1,250 sq. ft. 3,750 sq. ft. 4,687.5 sq. ft. 2,550 sq. ft. 9,211 sq. ft. 11,859 sq. ft.	2/25/77 3/1/79 6/24/81 3/1/79 — — 10/2/78 —
Tom T. Okano #152	.323 Acres	\$ 1,434.00	Business Services, III	\$ 1,000.00 mo.	10,770 sq. ft.	10/2/78
#168	.465 Acres	\$ 2,916.00	Tavares Enterprise	\$ 1,900.00 mo.	7,000 sq. ft.	3/6/80
UNITCO, Inc. #155	.837 Acres	\$ 3,784.00	J.C. Penney Co.	\$ 315.34 mo.	.837 Acres	—
Laupahoehoe Transportation Co. #156	10.000 Acres	\$25,372.74	Big Island Car Wash Bolkans, Inc. Occidental Chemical Co. Pacific Warehouse, Inc. Railings, Inc.	\$ 450.00 mo. \$ 500.00 mo. \$ 2,250.00 mo. \$ 2,020.97 mo. \$ 520.00 mo.	2,982.85 sq. ft. 1.031 Acres 15,000 sq. ft. 3,093 sq. ft. —	1/27/78 3/31/78 10/1/79 11/19/79 —
HPP, Inc. #159	.463 Acres	\$ 2,226.00	Hawaii Paper Products, Inc.	\$ 1,935.50 mo.	.463 Acres	12/9/80
Jiro Tanaka #160	.465 Acres	\$ 2,236.00	Fukunaga Electrical, Inc. Chameleon Co., Inc.	\$ 640.00 mo. \$ 1,497.60 mo.	5,670 sq. ft. 7,344 sq. ft.	11/7/80 6/8/81
Talaloa Co., Inc. #161	.930 Acres	\$ 4,860.00	Univ. of Hawaii Nick's Garage Bert's Auto Painting	\$ 1,500.00 mo. \$ 1,100.00 mo. \$ 875.00 mo.	10,710 sq. ft. 5,000 sq. ft. 3,500 sq. ft.	9/11/81 — —
#188	.517 Acres	\$ 5,800.00	American Vending & Amusements Hawaii	\$ 1,100.00 mo.	8,600 sq. ft.	3/1/79

LESSEE	AREA	ANNUAL LEASE RENT	SUBLESSEE	RENT	AREA	DATE OF CONSENT
L.H. Nishimoto Plumbing Contractors, Inc. #163	.930 Acres	\$ 4,860.00	Sears, Roebuck & Co.	\$ 2,172.60 mo.	40,500 sq. ft.	3/1/79
Ernest T. Kurohara #167	.422 Acres	\$ 2,024.00	Oskins Electric Kurohara Shop for Men, Inc.	\$ 390.00 mo. \$ 3,000.00 mo.	2,880 sq. ft.	3/1/79
Harvey & Helen Tajiri #170	.465 Acres	\$ 2,916.00	Light Mart PECA-IBEW Calica's Welding The Screen Shop	\$ 421.20 mo. \$ 120.00 mo. \$ 798.80 mo. \$ 269.57 mo.	1,000 sq. ft. — sq. ft. 1,200 sq. ft. 300 sq. ft.	— — — —
Robert & Joan Shibuya #175	.531 Acres	\$ 2,775.00	Big Island Candies	\$ 735.00 mo.	—	7/29/77
Arakaki Electric, Inc. #177	1.000 Acres	\$ 2,510.00	Radon Boats Hawaii	\$ 1,200.00 mo.	—	11/18/77
Kahua Ranch, Limited #184	9,930.000 Acres	\$45,000.00	FR Quarter Horse Ranch	\$28,350.00 yr.	8,176.000 Acres	8/10/76
South Pacific Ship & Chandlery, Ltd. #207	1.134 Acres	\$ 3,000.00	Monarch Roofing Co.	\$ 1,600.00 mo.	—	—
Edward & Norma Doty #208	.579 Acres	\$ 7,000.00	Eagle Distributors, Inc.	\$ 5,500.00 mo.	.239 Acres	—

1982 BEAUTIFICATION WINNERS

FIRST PLACE WINNERS

OAHU:

Elaine Dela Cruz, Nanakuli
Jo Ann Rosario III, Waianae
Abbie Machado, Papakolea
Edwin Young, Waimanalo

HAWAII:

Sun Wah Lee, Keaukaha
Clevis Aka, Waiakea
Mary Lindsey, Waimea

MAUI:

Vera Plunkett, Paukukalo

KAUAI:

Edwina Takahashi, Kekaha
Helen Sa, Anahola

MOLOKAI:

John Uu, Hoolehua
Ruby Camara, Kalamaula
Edwin Kaupu, Kapaakea
David Pa, III, One Alii

HONORABLE MENTION WINNERS

OAHU

(Nanakuli):

Becky Dalere
Gwendolyn Kamana
Isabella Stanton
Clarence Kong

(Waianae):

Harry Robins, Sr.
Benjamin M. Ili
Winona Resents
Elizabeth Kealoha

(Papakolea/Kewalo):

Violet Awai
David Aikala, Jr.
James Kalani
Emma Brown

(Waimanalo):

Gideon Kaonohi
Thelma Hussey
Paul Kealoha
Betty Akahane

KAUAI

(Kekaha):

Frank Cano
John Pahulehua
Michael Nakaahiki
James Nakaahiki

(Anahola):

Jeremiah Kaialoa
Isidro Pezario
Mercy Garder
Kaleihoku Kuhaulua

MOLOKAI

(Hoolehua-Agricultural):

John Apuna, Jr.
Cecelia Kahue
Neil K. Kinney
Severino Dela Cruz

(Kalamaula):

Jack Kakaio
Pearl Kaai
George Kaulia
Steven Kakaio

(Kapaakea):

Joseph Lyons, Jr.
Helen Kekalia
Enos Kahalewai
Ronald Davis

(One Alii):

Gabriel Puaa
Otto K. Willing
Mamie Pate
Edwin Greenleaf, Sr.

HAWAII

(Keaukaha):

Paul Iopa
Walter Wela
Daniel Midel, Sr.
John Noah

(Waiakea):

Abraham Makaio
Joseph Richardson, Jr.
Joshua Maluo
Walter Spencer

(Waiman):

Warren Ching
Rebecca Tomas
Richard Case
Patrick Asing

MAUI

(Paukukalo):

Mary M. Kamaka
Venus Eberly
George R. Kekona
Edward Alves

HAWAIIAN HOME LANDS EMPLOYEES

As Of June 30, 1982

OFFICE OF THE CHAIRMAN:

Georgiana K. Padeken, Chairman
Merwyn S. Jones, Deputy Director
Miriam Ryder, Private Secretary II
Janice Kaneshiro, Private Secretary I
Vacant, Secretary IV

LEGAL COUNSEL

George Kaco, Deputy Attorney General
Kali Watson, Deputy Attorney General
Haunani Burns, Deputy Attorney General

FISCAL OFFICE

Merwyn Manago, Fiscal Officer VI
CIP/Accounting Staff
Mike Isokane, Accountant IV
Ralph Sanborn, Accountant III
Jane Gordon, Cashier I
Amy Nogami, Account Clerk III
Cindy Loy, Account Clerk II
Lori Mitrulevich, Cashier Clerk
*Account Clerk IV

Tax Notification & Collection Staff
Eloise Aldueso, Delinquent Loan
Collection Officer

STAFF SERVICES OFFICE

Roy Tanouye, Administrative Assistant V
Personnel Services Staff
Rogelio Soto, Personnel Technician VI
Budget, Program Planning & Evaluation Staff
Grace Kajiyama, Program Budget Analyst II
Information Services & Records Staff
Gael Mustapha, Information Specialist IV
Clerical Services Pool
Gayle Nakashima, Clerical Supervisor II
Norma Ma, Clerk Steno II (Land)
Lilyan Toy, Clerk Steno II (Fiscal)
Karen Takenaka, Clerk Typist II (Legal Counsel)
Eileen Jackson, Clerk Typist II
Allysia Arreola, Clerk Typist II
Vacant, Clerk Typist II

LAND MANAGEMENT DIVISION

Robert Fletcher, Planning & Development
Coordinator
Joy Medeiros, Clerk Steno II
Gordon Wong, Planner VI
Land Planning, Development, Design &
Construction Branch:
Tony Pahia, Homestead Proj. Manager I
*Vacant, Engineer VI
*Vacant, Homestead Development Coord.
Income Land Management & Maintenance Branch

Rodney Asada, Property Manager V
Vacant, Agricultural Resource Sp.
Bruce Taylor, Land Agent IV
*Vacant, Property Manager III

Temporary:

Glenda Garcia
Exempt:
Darrell Yagodich, Native
Hawaiian Fund Coordinator
Hardy Spoehr, Native Hawaiian
Program Grants Specialist

Temporary Exempt:

Rico Manzano, Law Clerk
Marino Billena, Law Clerk

Temporary

Brian Walthall, Accountant III

Exempt:

Ernest Bernal, Delinquent Loan
Collection Assistant
Donna Botelho, Delinquent Loan
Collection Assistant
Doreen Mokuau, Delinquent Loan
Collection Assistant
Abigail Tubera, Clerk Typist II

Temporary Exempt:

Yukiko Kamei, Clerk-Typist II

Temporary Exempt:

Vacant, Planner VII
Temporary:
Vacant, Clerk Steno II
Temporary Exempt:
Stanley Wong, Engineer VI
Calvin Won, Engineer III
Bob Hall, Homestead
Development Coordinator
Paul Dolan, Homestead
Development Coordinator
Temporary Exempt:
Jenn Oshita-Kimura, Administrative
Research Coordinator
Alvin Asai, Property Manager IV
Michael Young, Land Agent II
Russell Dang, Land Agent II
Marcus Tecson, Land Agent II

DISTRICT MANAGEMENT DIVISION

John Rowe, Homestead Services Administrator
Dorothy Lum, Clerk Typist III

Loan Services Office

Roy Ah Nee, Homestead Applications &
Loan Officer

Lester Wong, Mortgage Loan Specialist

Linda Iwamoto, Homestead Assistant

Homestead Services Office

Linda Chang, Public Housing Specialist II

Amy Sato, Homestead Assistant

Helen Luke, Clerk IV

Anne Nakamura, Farmer's Home Loan Asst.

DISTRICT OFFICES

East Hawaii

Edward Kanahale, Homestead Project
Manager I

Ilyn Ferreira, Clerk Stenographer II

Adam Anakalea, Groundskeeper I

West Hawaii

William Vincent, Homestead Project
Manager II

Pearl Chong, Secretary I

Gerald Boteilho, Livestock Herder

Nancy Dela Cruz, Groundskeeper I

James Lindsey, Equipment Operator IV

Stanley Moniz, Equipment Operator III

Maui

Dewey Eberly, Homestead Project Manager I

Kauai

Juliet Aiu, Homestead Project Manager I

*Vacant Clerk II

Oahu

Melvin Kwan, Homestead Project
Manager II

*Vacant, General Laborer III

*denotes positions not established

Temporary

Cheryl Tanaka, Clerk Typist II

Vacant, Clerk Typist II

Vacant, Clerk Typist II

Vacant, Clerk Typist II

Nicole Johnson, Clerk Typist II

Exempt:

Stewart Matsunaga, Property
Manager II

Geraldine Young, Homestead

Lease/Loan Assistant

Cecilia Hoffman, Homestead

Lease/Loan Assistant

Helen Lee, Homestead Lease/Loan Asst.

Temporary Exempt:

Gwendolyn Kaaua, Homestead Assistant

Molokai

Alexander Bishaw, Homestead Project
Manager II

Edwina Cacoulidis, Homestead Assistant

Vacant, Clerk Typist, II

Harry Hanakahi, Livestock Herder

Walter Tengan, Equipment Operator II

Lawrence Puailihau, Water System

Maintenance Worker

Henry Nahoopii, Water System

Maintenance Helper

David Makaiwi, Water System

Maintenance Helper

Juanito Pico, General Laborer I

Richard Dela Cruz, General Laborer I

Cranston Kanakaole, General Laborer I

NOTES